

1 **Age-dependent risks of Incidence and Mortality of COVID-**
2 **19 in Hubei Province and Other Parts of China**

3
4 Hongdou Li^{1,3}, Shuang Wang², Fan Zhong¹, Wuyin Bao², Yipeng Li², Lei Liu¹,

5 Hongyan Wang³, Yungang He^{1*}

6
7 ¹ Shanghai Key Laboratory of Medical Epigenetics, International Co-laboratory of
8 Medical Epigenetics and Metabolism Ministry of Science and Technology, Institutes of
9 Biomedical Sciences, State Key Laboratory of Genetic Engineering and School of Life
10 Science, Fudan University, Shanghai, China

11 ² Guanghan Research Center of Personalized Healthcare, Shanghai, China

12 ³Obstetrics Gynecology Hospital, The Institute of Reproduction and Developmental
13 Biology, Fudan University, Shanghai, China

14
15 * **Correspondence:** Dr. Yungang He heyungang@fudan.edu.cn

16 Word Count: 3075

17 **Abstract**

18 New coronavirus SARS-CoV-2 poses a big challenge for global public health in
19 early 2020. Coronavirus Disease 2019 (COVID-19) caused by the virus rapidly spreads
20 all over the world and takes thousands of lives in just two months. It is critical to refine
21 the incidence and mortality risks of COVID-19 for the effective management of the
22 general public and patients in the outbreak. In this report, we investigate the incidence
23 and mortality risks of the infection by analyzing the age composition of 5319 infected
24 patients, 76 fatal cases, and 1,144,648 individuals of the general public in China. Our
25 result shows a relatively low incidence risk for young people but a very high mortality
26 risk for seniors. Notably, mortality risk could be as high as 0.48 for people older than
27 80 years. Furthermore, our study suggests that a good medical service can effectively
28 reduce the mortality rate of the viral infection to 1% or less.

29

30 **Key words: Coronavirus; SARS-CoV-2; COVID-19; Incidence risk; Mortality**
31 **risk.**

32

33 **Introduction**

34 On Jan 7, 2020, a new pathogenic virus caused pneumonia was identified in the
35 sample of bronchoalveolar lavage fluid from a patient in Wuhan, Hubei province, China.
36 It has typical features of the coronavirus family and therefore is classified as the
37 subgenus Sarbecovirus, Orthocoronavirinae subfamily(1, 2). This virus has been named
38 severe acute respiratory syndrome coronavirus 2 (SARS-CoV-2), and the disease it
39 causes has been named “coronavirus disease 2019” (COVID-19). It is the third
40 epidemic coronavirus that emerges in the human population in the 21st century,
41 following the severe acute respiratory syndrome coronavirus (SARS) outbreak in 2002
42 and the Middle East respiratory syndrome coronavirus (MERS) outbreak in 2012(3, 4).

43 Coronavirus is one of the main pathogens of human respiratory infection owing to
44 frequent cross-species infections. The emerging virus rapidly becomes a challenge for

45 global public health due to spread by human-to-human transmission. The majority of
46 the earliest COVID-19 patients were linked to the Huanan Seafood Wholesale Market.
47 However, human-to-human transmission has frequently been occurring and that the
48 epidemic has been gradually growing(5). As of March 4th, 2020, 80566 laboratory-
49 confirmed cases have been reported in China. Internationally, more than 14396 cases
50 have been reported in 77 countries(6, 7) The number of infected individuals is far
51 surpassing that of SARS and MERS. SARS-CoV-2 can cause severe and even fatal
52 respiratory diseases such as acute respiratory distress syndrome. It has been reported
53 that SARS-CoV-2 is more likely to affect older males with comorbidities, suggests that
54 age and comorbidity may be risk factors for poor outcomes(8, 9). In China, the reported
55 death is approaching 3% in total of COVID-19 patients in the middle of February 2020.

56 At present, information regarding the prevalence and case-fatality on clinical
57 features and epidemiology of COVID-19 remains scarce. However, a relatively
58 accurate evaluation of incidence and mortality is required that will help refine the risk
59 assessment and ensure that the public and patients are managed in an effective way.
60 Therefore, it is necessary to quantitatively evaluate the risks for individual groups of
61 different ages and gender. In this report, we show our initial analysis of the public data
62 from local authorities. Our study shows that the incidence risk of COVID-19 might be
63 as low as 0.1 for children while it could be over 0.9 for 40-years old adults. Our result
64 also suggests that the mortality risk might be above 0.2 for patients older than 80 years
65 old. Notably, the mortality risk is significantly different between patients of Hubei
66 province and that of other parts of China.

67

68 **Method**

69 **Data preparation**

70 Basic information of COVID-19 cases was released on official websites by the
71 national health commission of China and its local branches. A total of 5319 identified
72 COVID-19 cases with 76 fatal cases were included in our analysis. All the 5319

73 COVID-19 cases were residents outside Hubei Province. Among the 76 fatal cases, 45
74 cases were reported as residents of Hubei province and 31 cases were reported as
75 residents of other parts of China. Epidemiological characteristics, such as age, gender,
76 and location were carefully checked to remove missing values or duplicated records.
77 The composition of the age of the general public was obtained by data of 1,144,648
78 individuals from the General Census of China (2018)(10).

79 **Estimating incidence risk of COVID-19**

80 We estimated the incidence risk of COVID-19 for different age groups in the
81 general public by a maximum likelihood approach. In this approach, given the age
82 composition of the general public and incidence risk of different age groups, age
83 composition of COVID-19 cases can be obtained in

$$84 \quad P(\text{Age}_i | \text{incidence}) = \frac{P(\text{incidence} | \text{Age}_i)P(\text{Age}_i)}{\sum_i P(\text{incidence}, \text{Age}_i)}.$$

85 Where $P(\text{incidence} | \text{Age}_i)$ is the incidence risk of age group i ; $P(\text{Age}_i)$ is the
86 proportion of age group i in general public. We assumed that the incidence risk for
87 different age groups could be obtained from a logistic function of age,

88 $P(\text{incidence} | \text{Age}_i) = 1 / [1 + \exp(\frac{\mu - i}{r})]$. Likelihood of observation for age composition

89 of 5319 COVID-19 cases can be maximized by searching for optimized μ and γ .

90 Consequently, the incidence risk can be achieved in a maximum likelihood approach

91 where the risk is given by a logistic function of age with estimated parameters μ and

92 γ .

93 **Assessing mortality risk of COVID-19**

94 To assess the mortality risk of COVID-19 in the general public, we used a
95 maximum likelihood approach that is similar to that mentioned above. We obtained the
96 age composition of fatal cases of COVID-19 as

$$P(Age_i | Infection, Mortality) = \frac{P(Mortality | Infection, Age_i)P(Age_i | Infection)}{\sum_i P(Mortality, Age_i | Infection)}.$$

97
98 Where $P(Mortality | Infection, Age_i)$ is the risk of mortality condition on an
99 individual's age and infection state; $P(Age_i | Infection, Mortality)$ is age composition
100 of fatal cases of COVID-19. In this study, we assumed that infection happens in all age
101 groups for the general public and therefore have $P(Age_i | Infection) = P(Age_i)$. We
102 further applied the maximum likelihood approach to obtain the mortality risk of
103 COVID-19 for different age groups in the general public $P(Mortality | Infection, Age_i)$.
104 In the maximum likelihood approach, the mortality risk was given by the
105 aforementioned logistic function of age but with mortality specific μ and γ . To
106 eliminate the concern that the high mortality risk of older people may inflate the
107 mortality rate of infected population, we further imputed the mortality rate of the
108 infected people as $P(Mortality | Infection) = \sum_i P(Mortality, Age_i | Infection)$.

109

110 **Result**

111 **Characteristic of the COVID-19 cases and general public**

112 The public data of a total of 5319 identified COVID-19 cases were included in our
113 analysis. There were 2829 (53.2%) males and 2490 (46.8%) females in the COVID-19
114 cases, the male to female ratio turned out roughly equal across all age groups. The age
115 of COVID-19 patients ranged from 0.5 to 97 years, with a mean of 45.2 years. The age
116 and gender composition of COVID-19 patients and the public reference is presented in
117 Table 1. Compared to the general public, the COVID-19 cases had higher average age,
118 and there was a higher proportion of people aged 30 to 69 years.

119 We collected detailed information of 76 fatal cases and plotted the age composition
120 of the cases and the general public in Figure 1. It is evident that death occurs more

121 frequently in older people but rare for patients under 40 years old. The fatal cases were
122 from 34 to 89 years old, with an average age of 71.47 and a standard deviation of 12.49.

123

124 **Incidence risk of COVID-19 of the general public**

125 Based on the age composition of 5319 COVID-19 cases and the 1,144,648
126 individuals of general public, we estimated the incidence risk in a maximum likelihood
127 approach. Our result shows that the disease can happen in all age groups, and there
128 lacks a significant difference between males and females (Figure 2). The difference in
129 incidence risk for different gender is observed only for the groups between 15 and 50
130 years old. After the age of 15, males have a slightly higher incidence risk than women,
131 but the increase is ignorable for people over 50 years old. Our result does not support a
132 previous report that SARS-CoV-2 generally affects more males than females in the
133 epidemic⁸. The incidence risk is low for children and teenagers but rapidly increases
134 for adults. For adults over 40-years old, the risk is higher than 0.9 when they have full
135 exposure to the virus.

136

137 **Mortality risk of COVID-19 of general public**

138 In our assessment for mortality risk, there is a significantly higher mortality risk in
139 older adults (Figure 3). The estimated fatal probability is less than 0.01 for individuals
140 under 40 years old, but it is more than 0.51 for people older than 90 years. The
141 calculated risk is much higher than the previous reports. Our result is consistent with
142 most of the earlier studies, supporting the hypothesis that older age is associated with
143 an increased risk of mortality in COVID-19 patients. Our analysis of the total of 76 fatal
144 cases suggests a mortality rate of 2.38% for general infection. However, we noticed that
145 the mortality rate of COVID-19 in reports is significantly different between identified
146 cases of Hubei province and that of other parts of China (11).

147

148 **Different mortality risks in Hubei and other provinces**

149 To compare mortality risk between Hubei and other provinces of China, we
150 divided 76 fatal cases into two subsets, 45 cases from Hubei province and 31 cases from
151 other parts of China. The aforementioned statistical analysis for mortality risk is applied
152 to the two subsets with nine different age groups each. To account for variability, we
153 further obtained a standard deviation of estimations by applying the same method on
154 1000 simulated data sets that generated with initial estimation. Our result shows that
155 mortality risk is no more than 0.13 ± 0.10 for people over 80 years old outside Hubei
156 province, but the risk is as high as 0.60 ± 0.15 for the corresponding age group in Hubei
157 province (Figure 4). Mortality risk falls under 0.05 for people younger than 70 years in
158 other parts of China, while only people under 50 years old have a risk under 0.05 in
159 Hubei province. We also calculated the expectation of mortality rate for a general
160 infection inside and outside Hubei province as 4.78% and 0.95%.

161

162 **Discussion**

163 Our result suggests that there is a significantly higher mortality risk of COVID-19
164 for seniors than the previous report(11). It is probably due to the published report didn't
165 account for the increasing death of the identified COVID-19 cases. In the previous study,
166 the crude mortality rate is only 2.3%, but the rate is approaching 3.7% on March 4th,
167 2020 (3,015 deaths among 80,566 identified COVID-19 cases). As of March 4th, 2020,
168 there were still 5,952 COVID-19 patients in severe condition in China. It has been
169 reported that the survival probability of critically ill patients continuously decreased
170 with the increase of time since admission to the intensive care unit (12). Our analysis
171 was based on the composition of the age of the different populations, and therefore it is
172 less affected by the disease progression of patients, especially the increasing death of
173 critically ill patients. Age has been reported as the independent predictor of adverse
174 outcome in SARS and MERS. Comorbidities and low immune function of older people
175 might be the major cause of higher mortality of coronaviruses(3, 4, 11). Prompt

176 administration of antibiotics to prevent infection and strengthening of immune support
177 treatment might reduce the mortality of seniors(8).

178 Our data showed that the mortality rate of COVID-19 is five times higher in Hubei
179 province than that in other parts of China. On the one hand, this difference may be
180 partially explained by insufficient medical resources due to such a large amount of
181 patients in Hubei Province in the breakout. On the other hand, detailed information on
182 the majority part of fatal cases (40 of 45 in total) from Hubei province was published
183 before January 25th, 2019. The mortality rate of early reported cases may be overstated
184 because case detection is highly biased towards the more severe cases. However, we
185 strongly suggest international authorities try their best immediately to prevent too many
186 COVID-19 patients overloading their health care system. Our hypothesis that a smooth-
187 running health care system can effectively reduce the mortality rate of COVID-19 is
188 strongly supported by the low mortality rate in other parts of China.

189 In conclusion, we investigate the incidence and mortality risks of the infection by
190 analyzing the age composition of COVID-19 patients and the general public in China.
191 Our data shows a relatively low incidence risk for young people but a very high
192 mortality risk for old adults. Therefore, it is prudent to strengthen the tertiary preventive
193 and clinical care of old aged patients to reduce mortality. Furthermore, our results also
194 support that a good medical service can effectively reduce the mortality rate of the viral
195 infection to 1% or less. Our study could be of value to medical authorities to implement
196 effective medical service. The lack of complete data for all COVID-19 cases potentially
197 increases the occurrence of selection and measurement biases in this study. Therefore,
198 further large-scale epidemiological studies are necessary to elucidate the risk factors of
199 COVID-19 for the general public.

200

201 **Data Availability Statement**

202 All datasets generated for this study are included in the article.

203

204 **Author Contributions**

205 HY, HW, and LL contributed to the conception and design of the study. HL, SW, WB,
206 and YL collected and analyzed data. HY, HL, and FZ wrote sections of the manuscript.
207 All authors contributed to manuscript revision, read and approved the submitted version.

208

209 **Conflict of Interest**

210 The authors declare that there is no conflict of interest.

211

212 **Funding**

213 This work was supported by grants from National Natural Science Foundation of China
214 (Grant No. 31871255 and 91731310 to Y.H.) and Shanghai Municipal Science and
215 Technology Major Project (Grant No. 2017SHZDZX01).

216

217

218 **Reference**

- 219 1. Zhu, N, Zhang, D, Wang, W, Li, X, Yang, B, Song, J, et al. A novel coronavirus from patients
220 with pneumonia in China, 2019. *Publisher*. (2020). 382: 727-733. doi:10.1056/NEJMoa2001017
- 221 2. Huang, C, Wang, Y, Li, X, Ren, L, Zhao, J, Hu, Y, et al. Clinical features of patients infected
222 with 2019 novel coronavirus in Wuhan, China. *Publisher*. (2020). 395: 497-
223 506. doi:10.1016/S0140-6736(20)30183-5
- 224 3. Donnelly, CA, Ghani, AC, Leung, GM, Hedley, AJ, Fraser, C, Riley, S, et al. Epidemiological
225 determinants of spread of causal agent of severe acute respiratory syndrome in Hong Kong.
226 *Publisher*. (2003). 361: 1761-1766. doi:10.1016/S0140-6736(03)13410-1
- 227 4. Ahmed, AE. The predictors of 3-and 30-day mortality in 660 MERS-CoV patients. *Publisher*.
228 (2017). 17: 615 doi:10.1186/s12879-017-2712-2
- 229 5. Li, Q, Guan, X, Wu, P, Wang, X, Zhou, L, Tong, Y, et al. Early transmission dynamics in Wuhan,
230 China, of novel coronavirus-infected pneumonia. *Publisher*.
231 (2020). doi:10.1056/NEJMoa2001316
- 232 6. Holshue, ML, DeBolt, C, Lindquist, S, Lofy, KH, Wiesman, J, Bruce, H, et al. First case of 2019
233 novel coronavirus in the United States. *Publisher*. (2020). doi:10.1056/NEJMoa2001191

- 234 7. Rothe, C, Schunk, M, Sothmann, P, Bretzel, G, Froeschl, G, Wallrauch, C, et al. Transmission
235 of 2019-nCoV infection from an asymptomatic contact in Germany. Publisher. (2020).doi:
236 10.1056/NEJMc2001468
- 237 8. Chen, N, Zhou, M, Dong, X, Qu, J, Gong, F, Han, Y, et al. Epidemiological and clinical
238 characteristics of 99 cases of 2019 novel coronavirus pneumonia in Wuhan, China: a descriptive
239 study. Publisher. (2020). 395: 15-21.doi:10.1016/S0140-6736(20)30211-7
- 240 9. Wang, D, Hu, B, Hu, C, Zhu, F, Liu, X, Zhang, J, et al. Clinical characteristics of 138
241 hospitalized patients with 2019 novel coronavirus–infected pneumonia in Wuhan, China.
242 Publisher. (2020).doi:10.1001/jama.2020.1585
- 243 10. China, NBoso, *China Statistical Yearbook* (2019).
- 244 11. Team, TNCPERE. The epidemiological characteristics of an outbreak of 2019 novel coronavirus
245 diseases (COVID-19) in China. Publisher. (2020). 41: 145-151
- 246 12. Yang, X, Yu, Y, Xu, J, Shu, H, Liu, H, Wu, Y, et al. Clinical course and outcomes of critically ill
247 patients with SARS-CoV-2 pneumonia in Wuhan, China: a single-centered, retrospective,
248 observational study. Publisher. (2020).doi:10.1016/S2213-2600(20)30079-5
- 249

Table 1 Age and gender composition of the general public and the identified COVID-19 cases.

Age Groups	General public						COVID-19 cases					
	Total	Male	Female	Total (%)	Male (%)	Female (%)	Total	Male	Female	Total (%)	Male (%)	Female (%)
0-4	67393	35887	31506	5.89	3.14	2.75	51	24	27	0.96	0.45	0.51
5-9	63322	34279	29043	5.53	2.99	2.54	59	35	24	1.11	0.66	0.45
10-14	62248	33775	28473	5.44	2.95	2.49	55	32	23	1.03	0.60	0.43
15-19	58258	31552	26706	5.09	2.76	2.33	95	55	40	1.79	1.03	0.75
20-24	68050	36085	31965	5.95	3.15	2.79	239	140	99	4.49	2.63	1.86
25-29	92977	47710	45268	8.12	4.17	3.95	356	204	152	6.69	3.84	2.86
30-34	93201	46843	46358	8.14	4.09	4.05	524	291	233	9.85	5.47	4.38
35-39	81886	41517	40370	7.15	3.63	3.53	567	305	262	10.66	5.73	4.93
40-44	83574	42557	41017	7.30	3.72	3.58	579	349	230	10.89	6.56	4.32
45-49	102384	52108	50276	8.94	4.55	4.39	662	354	308	12.45	6.66	5.79
50-54	96850	48939	47911	8.46	4.28	4.19	631	319	312	11.86	6.00	5.87
55-59	69844	35208	34636	6.1	3.08	3.03	494	240	254	9.29	4.51	4.78
60-64	68014	34092	33923	5.94	2.98	2.96	349	157	192	6.56	2.95	3.61
65-69	54799	26974	27825	4.79	2.36	2.43	311	147	164	5.85	2.76	3.08
70-74	34810	16905	17905	3.04	1.48	1.56	153	85	68	2.88	1.60	1.28
75-79	22799	10745	12054	1.99	0.94	1.05	96	46	50	1.80	0.86	0.94
80-84	14845	6457	8389	1.3	0.56	0.73	57	25	32	1.07	0.47	0.60
85-89	6902	2870	4033	0.6	0.25	0.35	28	14	14	0.53	0.26	0.26
90-94	2031	665	1365	0.18	0.06	0.12	10	7	3	0.19	0.13	0.06
95+	458	131	327	0.04	0.01	0.03	3	0	3	0.06	0.00	0.06
Total	1144648	585299	559349	100	51.13	48.87	5319	2829	2490	100	53.19	46.81

Figure 1 Different age composition between the general public and 76 fatal cases. Individuals were grouped and presented on x-axis. For the general public, proportion of each age group was shown on left-hand side; number of fatal cases in each group was present on right-hand side.

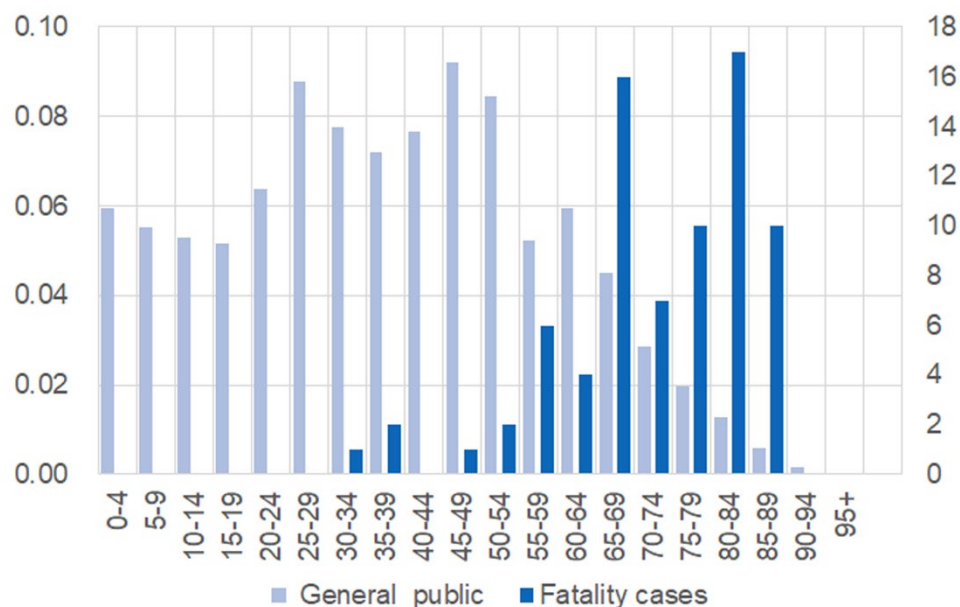


Figure 2 Incidence risk increases in older groups of the general public.

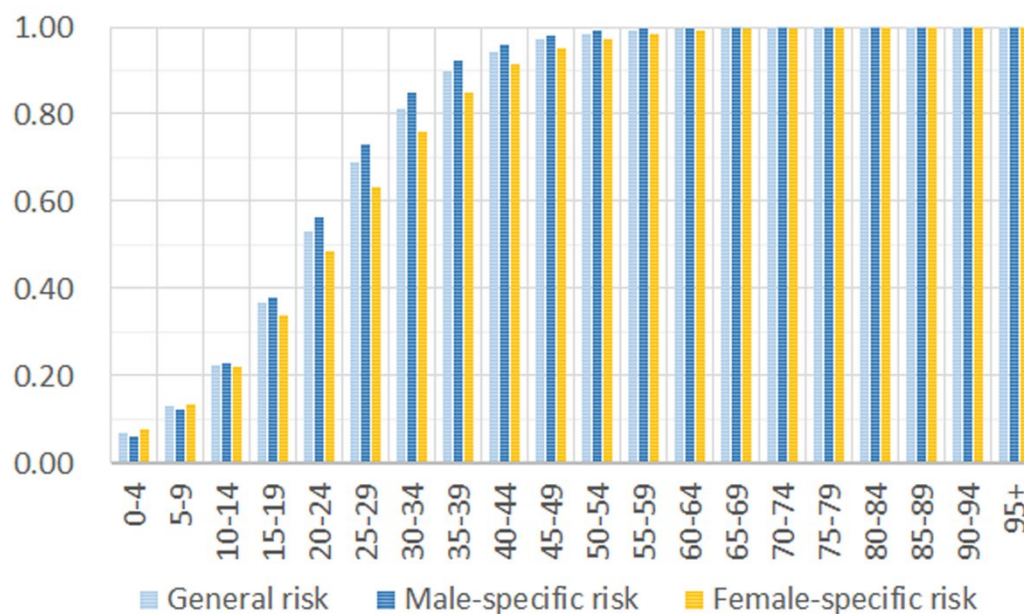


Figure 3 Mortality risk dramatically increases for older age groups

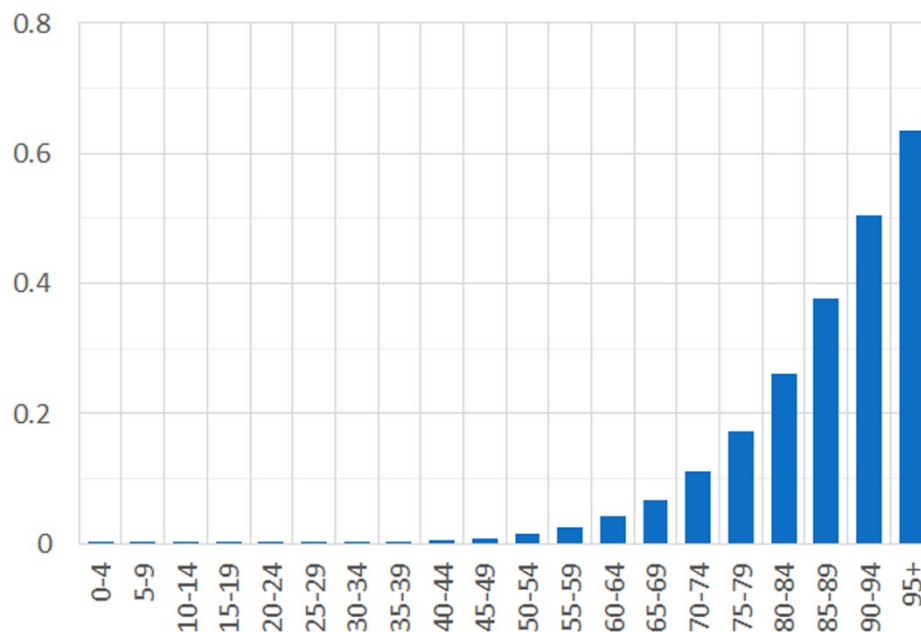


Figure 4 Estimated mortality risks in Hubei and other area of China. The risk was present on y-axis while age of grouped cases was shown on x-axis.

