

1 **Title:** A descriptive study of the impact of diseases control and prevention on the epidemics
2 dynamics and clinical features of SARS-CoV-2 outbreak in Shanghai, lessons learned for
3 metropolis epidemics prevention.

4
5
6 **Hongzhou Lu², Jingwen Ai¹, Yinzhong Shen², Yang Li¹, Tao Li², Xian Zhou¹, Haocheng**
7 **Zhang¹, Qiran Zhang¹, Yun Ling², Sheng Wang³, Hongping Qu⁴, Yuan Gao⁶, Yingchuan**
8 **Li⁷, Kanglong Yu⁸, Duming Zhu⁵, Hecheng Zhu⁹, Rui Tian⁸, Mei Zeng¹⁰, Qiang Li¹¹, Yuanlin**
9 **Song⁵, Xiangyang Li¹², Jinfu Xu¹³, Jie Xu¹⁴, Enqiang Mao⁴, Bijie Hu⁵, Xin Li⁵, Lei Zhu⁵,**
10 **Wenhong Zhang¹** on behalf of the Shanghai Clinical Treatment Expert Group for SARS-
11 CoV-2

12
13 Hongzhou Lu, Jingwen Ai, Yinzhong Shen, Yang Li contributed equally to this manuscript

14
15 **Correspondence:**

16 Wenhong Zhang, Department of Infectious Diseases, Fudan University, Shanghai 200040.

17 Mailing address: 12 Wulumuqi Zhong Road, Shanghai, China. Tel: +86-21-52888123. Fax: +86-

18 21-62489015. Email: wenhongzhang_hs@126.com.

19
20 **Affiliations:**

21 1. Department of infectious disease, Huashan Hospital of Fudan University, Shanghai, China

22 2. Shanghai Public Health Clinical Center, Fudan University, Shanghai, China

23 3. Shanghai Tenth People's Hospital of Tongji University, Shanghai, China

24 4. Ruijin Hospital, Shanghai Jiao Tong University School of Medicine, Shanghai, China

25 5. Zhongshan Hospital of Fudan University, Shanghai, China

26 6. Renji Hospital, Shanghai Jiao Tong University School of Medicine, Shanghai, China

27 7. Shanghai Sixth People's Hospital, Shanghai Jiao Tong University School of Medicine,
28 Shanghai, China

29 8. Shanghai General Hospital, Shanghai Jiao Tong University School of Medicine,
30 Shanghai, China

31 9. Department of Critical Care Medicine, Huashan Hospital of Fudan University, Shanghai,
32 China

33 10. Children's Hospital of Fudan University, Shanghai, China

34 11. Shanghai East Hospital of Tongji University, Shanghai, China

35 12. Huadong Hospital of Fudan University, Shanghai, China

36 13. Shanghai Pulmonary Hospital of Tongji University, Shanghai, China

37 14. Shanghai Ninth People's Hospital, Shanghai Jiao Tong University School of Medicine,
38 Shanghai, China

39 **NOTE:** This preprint reports new research that has not been certified by peer review and should not be used to guide clinical practice.

40 **Abstract**

41

42 **Objective** To describe and evaluate the impact of diseases control and prevention on
43 epidemics dynamics and clinical features of SARS-CoV-2 outbreak in Shanghai.

44

45 **Design** A retrospective descriptive study

46

47 **Setting** China

48

49 **Participants** Epidemiology information was collected from publicly accessible database.
50 265 patients admitted to Shanghai Public Health Center with confirmed COVID-19 were
51 enrolled for clinical features analysis.

52

53 **Main outcome measure** Prevention and control measures taken by Shanghai government,
54 epidemiological, demographic, clinical, laboratory and radiology data were collected.
55 Weibull distribution, Chi-square test, Fisher's exact test, t test or Mann-Whitney U test were
56 used in statistical analysis.

57

58 **Results** COVID-19 transmission rate within Shanghai had reduced over 99% than
59 previous speculated, and the exponential growth has been stopped so far. Epidemic was
60 characterized by the first stage mainly composed of imported cases and the second stage
61 where >50% of cases were local. The incubation period was 6.4 (95% CI 5.3 to 7.6) days
62 and the mean onset-admission interval was 5.5 days (95% CI, 5.1 to 5.9). Median time for
63 COVID-19 progressed to severe diseases were 8.5 days (IQR: 4.8-11.0 days). By February
64 11th, proportion of patients being mild, moderate, severe and critically ill were 1.9%(5/265),
65 89.8%(238/265), 3.8%(10/265), 4.5%(12/265), respectively; 47 people in our cohort were
66 discharged, and 1 patient died.

67

68 **Conclusion** Strict controlling of the transmission rate at the early stage of an epidemic in
69 metropolis can quickly prohibit the spread of the diseases. Controlling local clusters is the
70 key to prevent outbreaks from imported cases. Most COVID-19 severe cases progressed
71 within 14 days of disease onset. Multiple systemic laboratory abnormalities had been
72 observed before significant respiratory dysfunction.

73

74 **Keyword** COVID-19, SARS-CoV-2, epidemics dynamics, diseases control, clinical
75 features

76

77 **Introduction**

78 Since December 2019, a novel coronavirus, later named by WHO as SARS-CoV-2,
79 emerged in Wuhan, China [1-3] and rapidly spread throughout Hubei province, with
80 clustered cases reported globally [4-5]. Until February 19th 2020, the total reported

81 confirmed corona virus disease 2019 (COVID-19) cases have reached more than 72,000
82 within mainland China, and 888 cases in other 25 countries globally and the increasing
83 number of cases and widening geographical spread have raised concerns
84 internationally[6]. Up until now, multiple studies have described the clinical characteristics
85 of the COVID-19, including fever, fatigue, cough etc. Various researches reported intensive
86 care unit (ICU) admission rate between 19.1% to 32%[7-9], but this data mainly came from
87 Hubei regions, and it might be biased towards detecting severe cases at the beginning of
88 the epidemic. Thus, clinical features from regions outside Hubei can further assist the
89 understanding of the disease's epidemiological and clinical characteristics. Shanghai
90 reported its first case of SARS-CoV-2 infection in January 20th 2020, and the total
91 confirmed cases have reached to 333 cases by February 19th. As one of the global
92 metropolis, Shanghai faces a relatively higher epidemics danger due to the substantial
93 population mobility, and the risk is even doubled as Chunyun(a huge population flows
94 during the Spring Festival) collided with the epidemics. During this outbreak, Shanghai has
95 issued a number of strict measures to lower the transmissibility, including the shutdown of
96 all large entertainment venue, reducing passenger flow and very strong social propaganda.
97 Therefore, whether the Shanghai model has an impact on the epidemics dynamics and
98 disease control is an important reference to the other metropolises around the world. In
99 our study, we aimed to retrospectively describe the impact of diseases control on epidemics
100 dynamics and clinical features of SARS-CoV-2 outbreak in Shanghai, and to provide
101 valuable experience for other metropolises around the world.

103 **Methods**

104 **Study design and participants**

105 This is a retrospective, single-center cohort study, recruiting all patients admitted to
106 Shanghai Public Health Center (SHPHC) diagnosed with coronavirus disease 2019
107 (COVID-2019) according to WHO interim guidance before Feb 7th, 2020. According to the
108 arrangement of government, almost all adult patients from whole Shanghai were admitted
109 to SHPHC once coronavirus disease 2019(COVID-19) was confirmed by real-time PCR.
110 The study was approved by SHPHC ethics committee and oral consent was obtained from
111 patients.

112

113 All patients admitted to Shanghai Public Health Center diagnosed with coronavirus disease
114 COVID-19 according to WHO interim guidance were enrolled in this study [10]. Two cohorts
115 were generated in this study, mild-moderate cohort and severe-critically ill cohort. All
116 COVID-19 patients are classified as mild to critically ill cases at admission, according to
117 COVID-19 Guidelines (the fifth version) made by National Health Commission of the
118 People's Republic of China. The classifying criteria was as follows:

119 Mild: Presenting mild symptoms and normal radiology manifestation in both lungs.

120 Moderate (typical): Presenting typical symptoms (fever, cough and other respiratory
121 symptoms) and radiology manifestation suggesting pneumonia.

122 Severe: Presenting any one of the followings:

123 1) Respiratory distress, respiratory rates ≥ 30 per minute;

124 2) Pulse oxygen saturation $\leq 93\%$ on room air

125 3) Oxygenation Index (PaO₂/FiO₂) ≤300mmHg

126 Critically ill: Presenting any one of the followings

127 1) Respiratory failure where invasive ventilation is necessary

128 2) Signs of shock (circulatory failure)

129 3) Failure of any other organ where ICU care is necessary

130

131 **Data Collection**

132 The cumulative numbers of confirmed and suspected cases were collected from Shanghai
133 CDC, which were updated daily and publicly accessible. We obtained epidemiological,
134 demographic, clinical, laboratory and radiology data from patients' medical records. The
135 data were reviewed by a trained team of physicians. Information recorded included
136 demographic data, medical history, exposure history, comorbidities, symptoms, laboratory
137 findings at baseline and chest x-ray or computed tomographic (CT) scans. The date of
138 disease onset was defined as the day when the symptom was noticed.

139

140 **Statistical analysis**

141 The incubation period distribution (i.e., the time delay from suspected contact to illness
142 onset), and the onset-to-admission distribution was estimated by fitting a Weibull
143 distribution to data on suspected exposure and onset dates in a subset of cases with
144 detailed information available. Categorical variables were described as frequencies and
145 percentages, and compared by Chi-square test or Fisher's exact test between two cohorts.
146 Continuous variables were described as median and interquartile range (IQR) values.

147 Means for continuous variables were compared using independent group t-tests when the
148 data were normally distributed; otherwise, the Mann-Whitney test was used. For
149 comparisons, a 2-sided α of less than 0.05 was considered statistically significant. Results
150 of laboratory tests were also standardized and arranged by unsupervised hierarchical
151 clustering to identify the similarities, differences and characteristics, with Euclidean
152 distance measure and average linkage between groups methods. Statistical analyses were
153 performed using SPSS (Statistical Package for the Social Sciences) version 22.0 software
154 (SPSS Inc) and R software. Analyses of the incubation period, extensive predictive
155 analysis were performed with the use of MATLAB software (R2016b).

156

157 **Results**

158 ***Epidemiological analysis***

159 As of February, 19th 2020, a total number of 72,531 confirmed COVID-19 cases have been
160 reported according to reports from 31 provinces (autonomous regions, municipalities) and
161 the Xinjiang Production and Construction Corps in mainland China. However, the number
162 of newly increased cases, especially in regions outside Hubei provinces, has gradually
163 decreased since February 5th with the peak value of 3887. The same decreased trend can
164 be seen in the newly increased cases in Shanghai, with continuous declined growth rate
165 observed since February 4th. The total confirmed cases number of COVID-19 cases was
166 333 as of February 19th 2020, of which the percentage of COVID-19 cases without travel
167 history to Hubei province gradually surpassed 50%, according to the official report (Figure
168 1-A). The increased trend of cases without travel history to Hubei Province and the

169 confirmed 45 clusters cases in Shanghai implied that the second-generation cases in
170 Shanghai had appeared gradually. In our study, the earliest symptom onset of all confirmed
171 patients can be traced back to January 6th 2020. The development of the epidemic followed
172 an exponential growth and a decline in newly reported cases (Figure 2).

173 The study examined data on suspected exposures among all 265 laboratory-
174 confirmed cases with detailed, 37 of whom had credible information on contacts to
175 calculate the incubation period distribution. The mean incubation period is 6.4 days (95%
176 CI 5.3 to 7.6) and the 5th and 95th percentile of the distribution was 0.97 and 13.10,
177 respectively (Figure 3-A). The mean onset-admission interval was 5.5 days (95% CI, 5.1
178 to 5.9, SD 3.5). The 5th and 95th percentile of the distribution was 1 and 11.99, respectively
179 (Figure 3-B).

180 We performed an extensive analysis to February 9th 2020 using the previously
181 reported predictive parameterized transmission models in Shanghai and compared with
182 the actual reported confirmed cases [11-12]. The previous predictive model was based on
183 the hypothesis that no particular effective measures had been taken around the world and
184 the transmission among population had not been controlled. Our result showed that the
185 transmission rate within Shanghai had all decreased more than 95% than previously
186 speculated, suggesting that the prevention and control interventions taken by Shanghai
187 are of great impact on the overall control of the diseases during the current disease stage
188 (Figure 1-B).

189

190 ***Baseline clinical features***

191 220 (90.9%) patients had fever before admission. Nearly half of patients were presented
192 with pneumonia symptoms including cough (49.4%), expectoration (23.0%), chest pain
193 (2.3%). Other common symptoms included fatigue (25.3%), inappetences (11.7%),
194 headache (9.8%), myalgia (8.7%). Only 6.4% patients had diarrhea. Most symptom profile
195 were comparable between mild-moderate patients (N=243) and severe-critically ill patients
196 (N=22) while dyspnea occurred in a significantly higher proportion of severe or critical ill
197 patients (1/237 vs. 4/22, $p < 0.001$). Eleven patients were asymptomatic on admission
198 (Table 1).

199 All patients underwent chest X-ray or CT at admission (Table 2). 202 (76.2%) patients
200 showed bilateral pneumonia while 51 (19.2%) patients showed unilateral pneumonia, and
201 9 (3.4%) patients showed almost no abnormalities. The most common abnormalities were
202 multiple ground-glass opacities. All asymptomatic patients had findings that consistent with
203 pneumonia.

204 On admission, 120 (45.3%) and 39 (14.7%) patients had lymphopenia and leukopenia
205 respectively (Table 2). Most patients had normal levels of hemoglobin and platelets (92.5%
206 and 82.0%, respectively). Elevated level of lactate dehydrogenase (LDH) and creatine
207 kinase were detected in 106 (40.0%) and 46 (17.4%) cases, respectively. The elevation of
208 erythrocyte sedimentation rate (ESR) and C-reactive protein (CRP) was common.
209 Compared with patients with mild and moderate COVID-19, those with severe or critically
210 disease presented with extensively and significantly different laboratory parameters,
211 including lymphocytes and neutrophils, myocardial zymogram (creatin kinase, myoglobin,
212 troponin T, LDH, NT-proBNP), liver and renal function (alanine aminotransferase, aspartate

213 aminotransferase, albumin, serum creatine, and eGFR), coagulation function (activated
214 partial thromboplastin time, fibrin degradation products , and D-dimer), and infection-
215 related biomarkers (CRP and procalcitonin). The counts of CD4+ and CD8+ cell of severe
216 or critically ill patients were 205/ μ l and 135/ μ l, significantly lower than those of the mild or
217 moderate patients (Figure 4).

218

219 ***Timeline and outcome of the disease progression***

220 The proportion of patients with mild, moderate, severe and critically ill diseases on
221 admission were 3.4% (9/265), 94.0% (249/265), 1.1% (3/265), and 1.5% (4/265),
222 respectively. The spectrum of severity of diseases changed slightly as disease progressed.
223 Of the 9 mild cases without pulmonary abnormality on admission, 4 showed bilateral or
224 unilateral pneumonia in the subsequent chest CT tests which meant they were classified
225 into moderate cases during hospitalization; and the remaining 5 had no changes in
226 pulmonary imaging follow-ups for more than two weeks. While all the 11 asymptomatic
227 patients had findings that consistent with pneumonia on routine CT examinations on
228 admission. One of the patients was asymptomatic until she was discharged 11 days after
229 being hospitalized. Two patients had subjective symptoms during the hospitalization. The
230 remaining patients were still under observation in the hospital and had no symptoms. The
231 median time for COVID-19 progressed to severe diseases was 8.5 days (IQR: 4.75-11.0
232 days), and to critically ill, requiring invasive mechanical ventilation, was 10.0 days (IQR:
233 5.5-11.0 days). There were 22 severely ill patients in the cohort, of which 21 were severely
234 ill within 14 days of the course of the disease (Figure 5). When reevaluated the patients

235 who were on day 14 of illness, we observed that 9.6% (17/177, 95%CI: 5.6-15.4%) had
236 severe or critically ill COVID-19 while 86.7% (152/177) were stable, and other 4.5% (8/177)
237 cured (Figure 6). By February 11th, the proportion of patients being mild, moderate, severe
238 and critically ill were 1.9%(5/265), 89.8%(238/265), 3.8%(10/265), 4.5%(12/265),
239 respectively; 47 (17.7%) people in our cohort were discharged, and 1 (0.38%) patient died.
240 One of the critically ill patients was complicated with sepsis, two were treated with
241 continuous renal replacement therapies, three patients were on extra-corporeal membrane
242 oxygenation, and one patient recovered from severe disease to moderate condition.

243

244 **Discussion**

245 The first laboratory-confirmed case in Shanghai was reported in January 20th, and
246 epidemic of Shanghai has experienced an increasing trend, during which the amplification
247 of the newly diagnosed cases per day was increasing continuously. However, the trend
248 had turned to a declining phase since January 31st. This phase was in accordance with the
249 most regions outside Hubei province in China. In Hubei, newly diagnosed cases were still
250 increasing in Hubei and on Feb 12th, because the clinical diagnosis was included in the
251 guideline, the daily number of diagnosed patients had reached a spike of more than 10,000,
252 allowing many suspected who haven't the chance to be laboratory-confirmed to be
253 admitted to the hospital for treatment. Therefore, in the near future, the local prevention
254 and control of COVID-19 in Hubei would enter into a critical stage, where a turning point
255 might be met if all measures were successively achieved.

256 Comparing the actual diseases trend in Shanghai with the previously estimated trends,

257 we could find out that Shanghai exhibited a high-efficiency epidemics controlling ability and
258 had stopped the exponential growth for now. The reason behind this is that during this
259 epidemic, Chinese and Shanghai government has issued very strong and strict measures
260 in restricting the transmission in local regions. The national transport department
261 announced a 45% and 70.6% decline in the passenger flow at the beginning and the end
262 of 2020 Spring Festival, respectively [13-14]. What's more, Shanghai government
263 cancelled all gathering activities and through propaganda of the officials, media and
264 community, citizens were well-informed and well-educated of the importance of wearing
265 face masks and washing hands frequently. Previous studies have suggested that the
266 mobility reduction could not effectively lower the incidence rate while 50% transmissibility
267 reduction could easily prevent the epidemics from further spreading [12]. In the case of
268 Shanghai, the transmissibility was indeed greatly reduced, however, we believe the
269 mobility reduction also played an indirect role in lowering the transmissibility. This is
270 because that Chinese Spring Festival is characterized by hundreds of millions of people
271 transporting from one region to another, and this massive gathering at the airports, train
272 stations during transportation, if not controlled, would significantly increase the human to
273 human transmission. Therefore, during this special period, controlling both mobility and
274 transmissibility might be important. Other doubt lies in that previous studies have reported
275 that the ascertainment rate in Wuhan is 5.1%[11], and suggested that other cities such as
276 Shanghai, Beijing have the similar ascertainment rate, which would lead to our local case
277 numbers fall below the true ones. However, in Shanghai for example, the suspected cases
278 were approximately 20 folds of the laboratory-confirmed cases. Thus we expected the

279 ascertainment rate outside Hubei province was closer to the actual epidemic size. But in
280 the end, the disease prevention and control of the regions outside Hubei province would
281 always heavily rely on the diminish of the epidemic in Hubei province, and the combination
282 of Hubei epidemic control and strong measures to prevent local clustered cases outside
283 Hubei will be the key to success.

284 In areas outside Hubei, the epidemics has transmitted from the first stage, in which
285 imported cases composed of the main laboratory-confirmed cases, to the second stage,
286 where imported cases and local sporadic or even clustered cases were simultaneously
287 seen while imported cases from Hubei province gradually reduced due to the region shut
288 down. In fact, clusters of cases within China and around the world without Hubei travelling
289 history have been reported, indicating the shifting of the epidemic characteristics globally.
290 In our study, we found that local cases increased approximately 5 days after the first the
291 imported cases, possibly due to the incubation period after these local cases were infected.
292 Also, the proportion of patients with a travel history to Hubei has gradually decreased, and
293 the proportion of patients without a travel history to in Hubei has gradually increased. This
294 suggests that strengthening prevention of local sporadic or clustered cases in areas
295 outside Hubei in the future will be crucial for the second-stage epidemic control outside
296 Hubei province.

297 In our study, the incubation period is similar as other studies previously reported, but
298 the mean onset-admission interval was 5.478 days, shorter than 12.5 day initially reported
299 in Wuhan[15], suggesting the timely control and prevention of the diseases spreading. One
300 reason behind this is the improvement of the diagnostic ability of the disease, mainly the

301 production of RT-PCR kit, which significantly shortened the diagnostic time frame.

302 The 11 asymptomatic patients in the Shanghai cohort were diagnosed after nucleic
303 acid sampling of close contacts of confirmed patients. Routine chest CT examinations at
304 admission revealed pneumonia in all of them. Therefore, these patients can only be
305 considered asymptomatic but not in incubation. Although there was a reported case of
306 incubation time up to 24 day [16], we believe that it is necessary to clarify whether an
307 imaging assessment was performed before the onset of symptoms in this patient. However,
308 it is worth noting that, at the epidemiological level, these asymptomatic patients are almost
309 the same as those in the incubation period. A positive nasopharyngeal swab RT-PCR for
310 COVID-19 in these patients suggests that they do have the potential to infect others. We
311 therefore believe that more active inspections and evaluations of close contacts should be
312 undertaken.

313 The proportion of severe and critically ill patients in Shanghai was significantly lower
314 than that in Wuhan. We consider the proportion of patients with severe illness to be a very
315 important indicator of the disease. First, regional mortality rate varies widely in the early
316 stages of the disease outbreak because it is affected by many factors, such as life support
317 equipment for critically ill patients and local medical conditions. In the absence of effective
318 antiviral drugs, the proportion of critically ill patients depicts the natural course of the
319 disease better than the mortality rate. Second, because the final clinical outcome of
320 majority of the reported cases is typically unknown during a growing epidemic, dividing the
321 cumulative reported deaths by reported cases will underestimate the mortality rate early in
322 an epidemic[17]. We believe that the proportion of severe illness in Wuhan is biased

323 towards detecting severe cases, partly because diagnostic capacity is limited at the start
324 of an epidemic. Because of Shanghai's active surveillance, especially for suspected cases
325 with recent travel history to the affected region and close contacts, demonstrating by
326 shorter onset-administration interval and 4% asymptomatic patients on admission,
327 Shanghai should have picked up clinically milder cases as well as the more severe cases
328 resulting a more reliable proportion of critically ill patients. To reduce the bias cause by mild
329 case in early stage, we calculated the proportion of critically ill patients among those with
330 an onset of 14 days or more, since more than 95% sever cases in Shanghai developed
331 before that time. That proportion of 9.6% is substantially lower than SARS or MERS. The
332 early clinical manifestations of COVID-19 patients in Shanghai were similar to those
333 reported in Wuhan and elsewhere[7-9].

334 Our study showed relatively comprehensive laboratory test results in the published
335 studies. Assessed through this systematic inspection, we can find that sever COVID-19
336 cases had extensive systemic laboratory abnormalities which indicated multisystem
337 involvement had existed before significant respiratory abnormalities appeared. Previous
338 studies have found that most patients had reduced lymphocytes and abnormal levels of
339 many cytokines in critically ill patients [8,16]. Lymphocyte classification in our study showed
340 that CD4 and CD8 cells both decreased in COVID-19 patients, and ~15% patients had
341 $CD4 / CD8 < 1$. This may be related to a systemic inflammatory response caused by a
342 cytokine storm, which is similar to that of SARS patients. The severity classification of
343 COVID-19 patients in China mainly focuses on the respiratory system and oxygenation of
344 patients. We believe more attention should be paid to other organs function of the patient

345 in addition to the respiratory system. As follow-up continues, we can observe the outcome
346 of more and more patients, and it should be possible to identify early risk factors that
347 indicate a poor prognosis.

348 Our study has several limitations. First, as the epidemics has not ended yet, the
349 effect of the control measures cannot be fully evaluated. Second, as most patients are
350 still hospitalized at the time of manuscript submission, clinical outcome remains to be
351 seen. Third, we did not measure cytokines and viral loads, which may be related to
352 disease progression and severity.

353 **Conclusion**

354 Strict measures on controlling disease transmissibility in a metropolis can quickly reduce
355 the spread of a new infectious diseases to polar levels and stop its exponential growth in
356 the short term. Controlling the local clusters is the key to prevent outbreaks due to imported
357 cases. Our studies showed that the incubation period for COVID-19 is 6.438 days and 9.6%
358 of COVID-19 cases were severe cases. The median time for COVID-19 progressing to
359 severe diseases was 8.5 days and multiple systemic laboratory abnormalities which
360 indicated multisystem involvement had been observed before significant respiratory
361 abnormalities appeared.

362

363

364 **Consent from participate**

365 Oral consent was obtained was obtained from the patients.

366

367 **Funding**

368 This study was not funded.

369

370 **Competing interests**

371 All authors declare no competing interests.

372

373 **Acknowledgements**

374 We acknowledge all health-care workers involved in the diagnosis and treatment of
375 patients and show the greatest appreciation to all health workers for their valuable input to
376 the control of diseases.

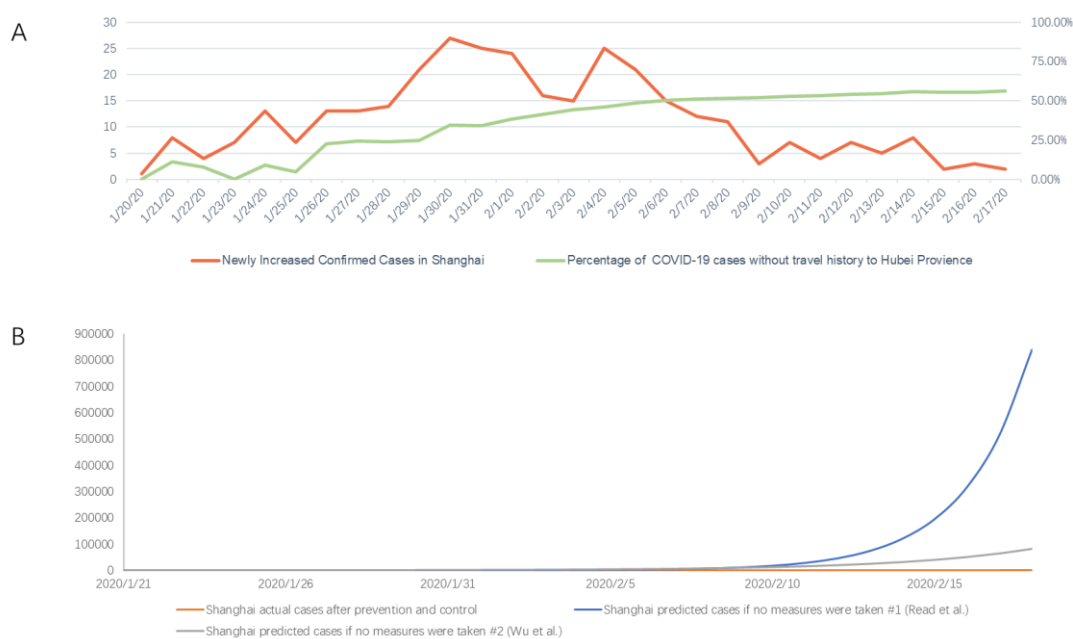
377

378

379

380 **Figure 1: COVID-19 trends in Shanghai**

381 (A) Newly increased confirmed cases in Shanghai and the percentage of COVID-19 cases
382 without travel history to Hubei Province. (B) Actual and predicted COVID-19 cases in
383 Shanghai.



384

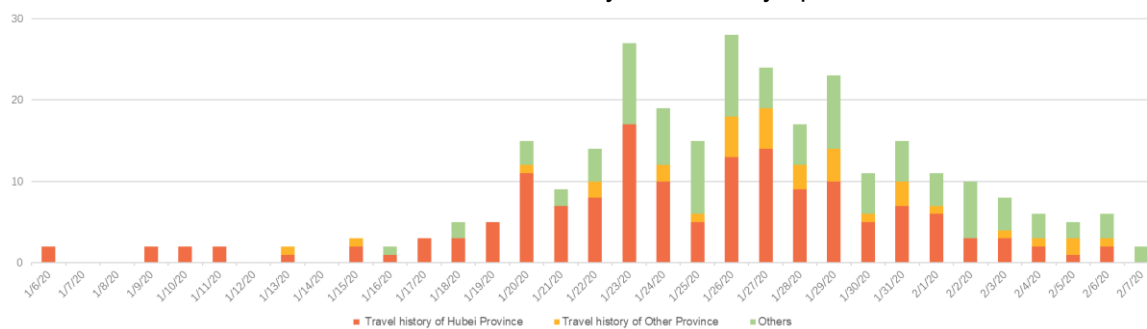
385

386

387

388 **Figure 2. Onset of illness among confirmed cases of COVID-19 in Shanghai, China**

389 The date of disease onset was defined as the day when the symptom was noticed.



390

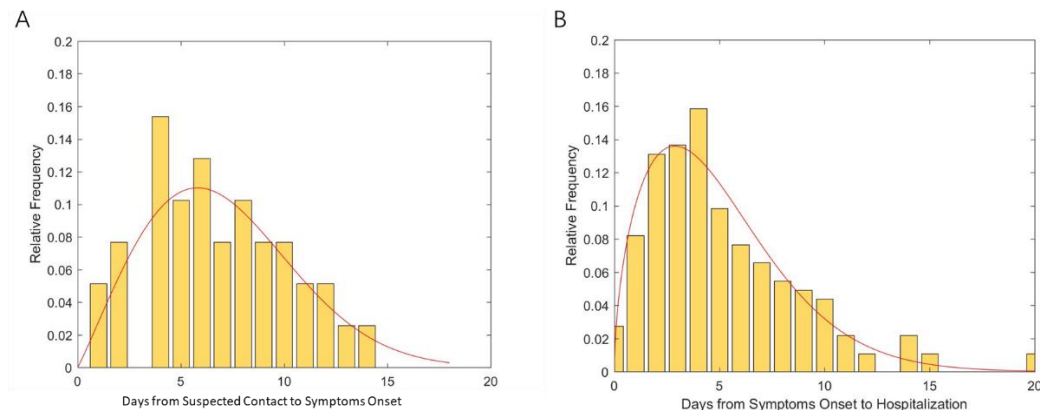
391

392

393

394

395 **Figure 3. Key time-to-event distributions**



396

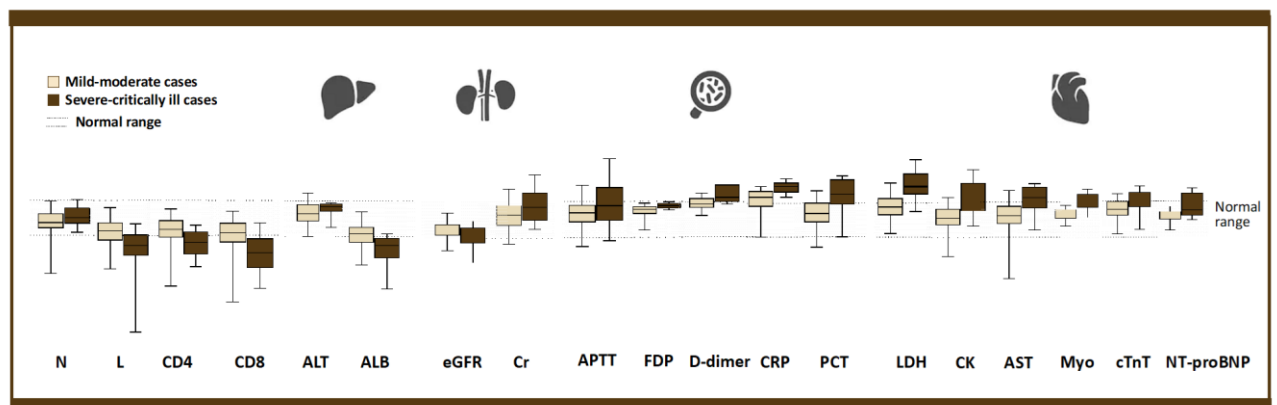
397

398

399

400 **Figure 4. Significantly different laboratory parameters**

401 Compared to the mild-moderate cohort, some laboratory results were obviously abnormal
 402 in Severe-critically ill cohort, suggesting impairments in different system in severe or
 403 critically ill COVID 2019 patients. Each box extends from the 25th to 75th percentiles, and
 404 each whisker goes down to the smallest value and up to the largest value (except for
 405 outliers. The shade between dotted line two dotted lines indicates the normal range of
 406 parameters. (The whiskers were generated using Tukey method, where values were
 407 regarded as outliers and not presented in this figure if greater than the sum of the 75th
 408 percentile plus 1.5 IQR or less than 25th percentile minus 1.5IQR. Boxes, whiskers and
 409 normal range change were extracted from graph of each parameter, adjusted to fit each
 410 other in fixed proportions, the distribution of the testing results and their relationship with
 411 normal range were not changed during the adjustment). All parameters presented in this
 412 figure had significant difference between two cohorts ($P < 0.05$).



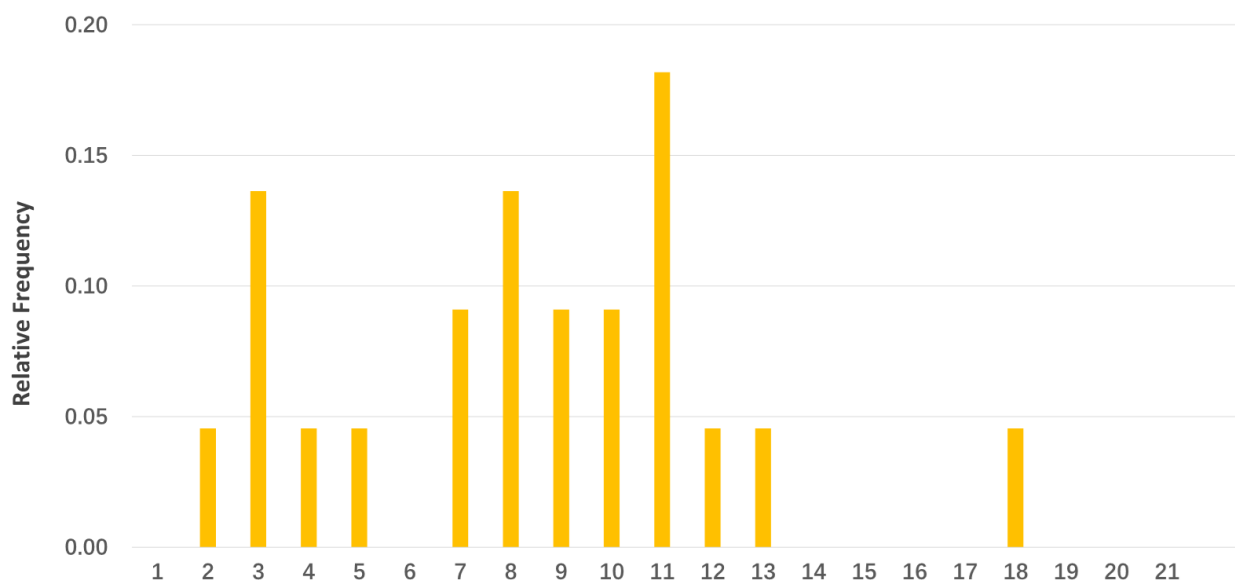
413

414

415

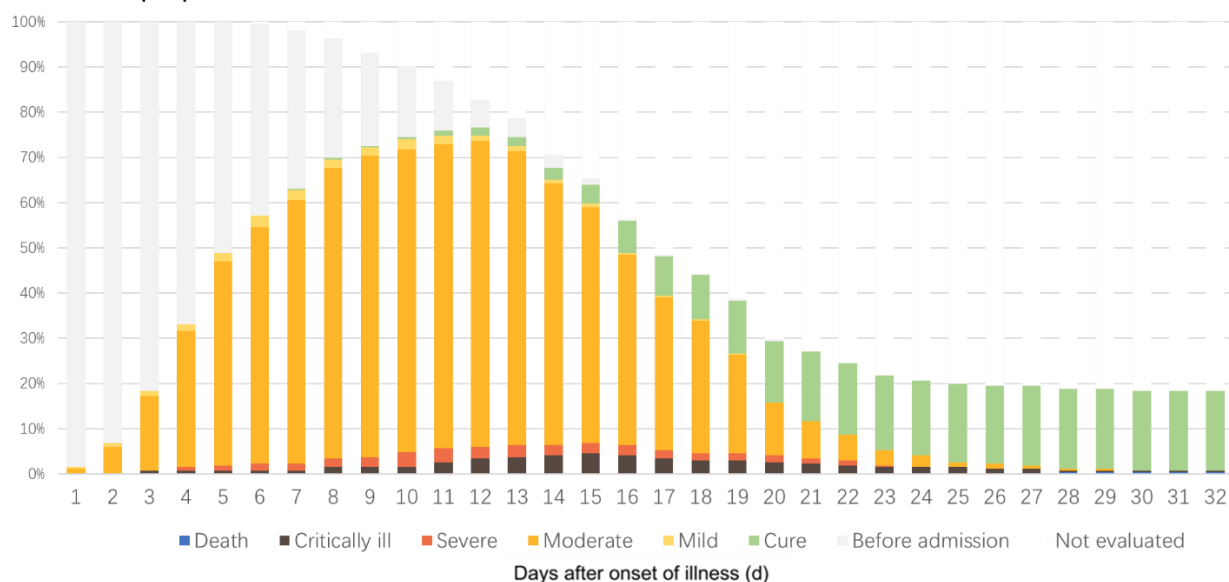
416

417 **Figure 5. Days from illness onset to COVID-19 progression to severe illness.**
 418 x-axis: the observation time from the onset of symptom for each patient. d0 is defined as
 419 the date diagnosis of COVID-19 confirmed.



420
 421
 422
 423
 424
 425
 426

Figure 6. The patient composition and classification of the cohort.
 X-axis: the observation time from the onset of symptom for each patient. calculated; for asymptomatic patients, d0 is defined as the date diagnosis of COVID-19 confirmed.
 Y axis: the proportion of the entire cohort.



427
 428
 429

430 **Table 1 Clinical symptoms, comorbidities, and radiology findings at admission**

	All Patients N=265	Mild-moderate N=243	Severe-critically ill N=22	P value
Symptoms				
Fever	220 (90.9%)	200 (82.3%)	20 (90.9%)	0.303
Cough	131 (49.4%)	124 (51.0%)	7 (31.8%)	0.084
Expectoration	61 (23.0%)	55 (22.6%)	6 (27.3%)	0.621
Fatigue	67 (25.3%)	60 (24.7%)	7 (31.8%)	0.461
Inappetence	31 (11.7%)	28 (11.5%)	3 (13.6%)	0.730
Headache	26 (9.8%)	25 (10.3%)	1 (4.5%)	0.707
Myalgia	23 (8.7%)	21 (8.6%)	2 (9.1%)	0.999
Chest tightness	12 (4.5%)	9 (3.7%)	3 (13.6%)	0.067
Chest pain	6 (2.3%)	5 (2.1%)	1 (4.5%)	0.409
Dyspnea	5 (1.9%)	1 (0.4%)	4 (18.2%)	<0.0001
Rhinorrhea	16 (6.0%)	16 (6.6%)	0 (0.0%)	0.376
Sore throat	12 (4.5%)	12 (4.9%)	0 (0.0%)	0.607
Diarrhea	17 (6.4%)	17 (7.0%)	0 (0.0%)	0.200
Nausea or vomiting	6 (2.3%)	6 (2.5%)	0 (0.0%)	0.999
Comorbidities				
Hypertension	52 (19.6%)	42 (17.3%)	10 (45.5%)	0.004
Diabetes Mellites	21 (7.9%)	15 (6.2%)	6 (27.3%)	0.004
Coronary diseases	14 (5.3%)	10 (4.1%)	4 (18.2%)	0.021
COPD	4 (1.5%)	2 (0.8%)	2 (9.1%)	0.036
Tumor	6 (2.3%)	5 (2.1%)	1 (4.5%)	0.409
Chronic renal diseases	5 (1.9%)	3 (1.2%)	2 (9.1%)	0.057
Hyperlipidemia	4 (1.5%)	4 (1.6%)	0 (0.0%)	0.999
Cerebrovascular diseases	2 (0.8%)	1 (0.4%)	1 (4.5%)	0.159
Autoimmune diseases	2 (0.8%)	1 (0.4%)	1 (4.5%)	0.159
Chronic liver diseases	1 (0.4%)	0 (0.0%)	1 (4.5%)	0.083
Radiology manifestation				0.263
Normal	9 (3.4%)	9 (3.7%)	0 (0.0%)	
Unilateral involved	51 (19.2%)	49 (20.2%)	2 (9.1%)	
Bilateral involved	205 (77.4%)	185 (76.1%)	20 (90.9%)	

431 Data were shown as n (%).

432 Abbreviation: COPD, chronic obstructive pulmonary disease

433

434 **Table 2 Laboratory examination at admission**

	All Patients N=265	Mild-moderate N=243	Severe-critically ill N=22	P value
Blood routine and lymphocyte classification				
WBC	4.6 (3.8-5.9)	4.7 (3.9-5.7)	4.5 (3.8-6.9)	0.556
Lymphocytes	1.1 (0.8-1.5)	1.2 (0.9-1.5)	0.7 (0.5-1.0)	<0.0001
Neutrophils	2.9 (2.3-3.9)	2.8 (2.3-3.8)	3.3 (2.7-4.8)	0.033
Hemoglobin	136.1 (18.01)	135 (125-148)	145 (123-151)	0.221
Platelets	176 (141-219)	177 (142-219)	156 (122-211)	0.37
CD8 cell	260 (164-396)	266 (176 -411)	135 (76-230)	<0.0001
CD4 cell	431 (300-650)	455 (312-652)	205 (115-354)	<0.0001
Blood biochemistry				
ALT	23.0 (15.0-33.0)	21.0 (15.0-33.0)	30.0 (24.5-34.5)	0.012
AST	24.0 (19.0-33.0)	24.0 (19.0-31.0)	39.5 (29.7-53.5)	<0.0001
Total bilirubin	7.90 (6.5-10.5)	7.80 (6.4-10.3)	8.9 (7.3-13.3)	0.05
Albumin	40.8 (37.8-43.0)	41.0 (37.8-43.4)	36.8 (33.0-39.4)	<0.0001
NT-proBNP	34.6 (23.0-67.6)	32.90 (22.4-61.0)	76.1 (37.7-694.0)	<0.0001
Myoglobin	6.7 (3.1-15.3)	5.73 (2.8-12.4)	34.5 (19.2-174.3)	<0.0001
Troponin T	0.02 (0.01-0.04)	0.02 (0.01-0.04)	0.04 (0.02-0.09)	<0.0001
LDH	232 (195-293)	228.0 (192.5-276.0)	354 (304-466)	<0.0001
Creatine kinase	83 (56-133)	7 (550-121)	226 (110-443)	<0.0001
Serum Creatine	63.6 (52.4-76.1)	63.0 (51.8-75.2)	72.8 (57.3-95.8)	0.008
eGFR	110 (96-127)	112 (97-129)	99.8 (73.8-118.8)	0.016
Lactic acid	2.74 (2.33-3.21)	2.7 (2.3-3.2)	2.9 (2.4-3.6)	0.254
Potassium	3.80 (3.60-4.00)	3.8 (3.5-4.0)	3.9 (3.6-4.1)	0.206
Sodium	139 (137-141)	139 (138-141)	136 (131-139)	<0.0001
Coagulation function				
PT	13.3 (13.00-13.)	13.3 (13.0-13.8)	13.5 (12.9-14.1)	0.266
APTT	39.5 (36.3-42.6)	39.3 (36.3-42.0)	41.9 (36.8-49.3)	0.027
FDP	0.92 (0.42-1.76)	0.85 (0.35-1.54)	1.9 (1.2-3.1)	<0.0001
D-dimer	0.42 (0.29-0.80)	0.39 (0.28-0.72)	0.8 (0.5-3.5)	<0.0001
Infection-related parameters				
Procalcitonin	0.03 (0.02-0.06)	0.03 (0.02-0.05)	0.08 (0.05-0.15)	<0.0001
CRP	9.8 (2.5-27.4)	8.6 (1.9-23.5)	53.5 (20.5-96.1)	<0.0001
ESR	50.5 (29.0-90.0)	49.0 (27.2-90.0)	52.0 (38.7-91.5)	0.473

435 Data are shown as median value (interquartile range).

436 Abbreviation: WBC, white blood cell; ALT, alanine aminotransferase; AST, aspartate
 437 aminotransferase; NT-proBNP, N-terminal pro-B-type natriuretic peptide; LDH, lactate
 438 dehydrogenase; eGFR, estimated glomerular filtration rate; PT, prothrombin time; APTT,
 439 Activated partial thromboplastin time; FDP, Fibrinogen degradation products; CRP, c-
 440 reactive protein; ESR, erythrocyte sedimentation rate.

441 References:

- 442 1. J. C. Chinese researchers reveal draft genome of virus implicated in Wuhan pneumonia
443 outbreak. In. Washington, DC: American Association for the Advancement of Science
444 [https://www.sciencemag.org/news/2020/01/chinese-researchers-reveal-draft-](https://www.sciencemag.org/news/2020/01/chinese-researchers-reveal-draft-genome-virus-implicated-wuhan-pneumonia-outbreak)
445 [genome-virus-implicated-wuhan-pneumonia-outbreak](https://www.sciencemag.org/news/2020/01/chinese-researchers-reveal-draft-genome-virus-implicated-wuhan-pneumonia-outbreak).
- 446 2. Zhu N, Zhang D, Wang W, et al. A Novel Coronavirus from Patients with Pneumonia in
447 China, 2019. *N Engl J Med*. 2020:10.1056/NEJMoa2001017.
- 448 3. WHO names deadly virus from China as 'COVID-19'. In. [https://guardian.ng/news/who-](https://guardian.ng/news/who-names-deadly-virus-from-china-as-covid-19/)
449 [names-deadly-virus-from-china-as-covid-19/](https://guardian.ng/news/who-names-deadly-virus-from-china-as-covid-19/).
- 450 4. Holshue ML, DeBolt C, Lindquist S, et al. First Case of 2019 Novel Coronavirus in the
451 United States. *N Engl J Med*. 2020:10.1056/NEJMoa2001191.
- 452 5. Kim JY, Choe PG, Oh Y, et al. The First Case of 2019 Novel Coronavirus Pneumonia
453 Imported into Korea from Wuhan, China: Implication for Infection Prevention and
454 Control Measures. *J Korean Med Sci*. 2020;35(5):e61-e61.
- 455 6. Coronavirus diseases 2019 (COVID-19) Situation Report-28
456 [https://www.who.int/docs/default-source/coronaviruse/situation-reports/20200217-](https://www.who.int/docs/default-source/coronaviruse/situation-reports/20200217-sitrep-28-covid-19.pdf?sfvrsn=a19cf2ad_2)
457 [sitrep-28-covid-19.pdf?sfvrsn=a19cf2ad_2](https://www.who.int/docs/default-source/coronaviruse/situation-reports/20200217-sitrep-28-covid-19.pdf?sfvrsn=a19cf2ad_2)
- 458 7. Wang D, Hu B, Hu C et al. Clinical Characteristics of 138 Hospitalized Patients With
459 2019 Novel Coronavirus-Infected Pneumonia in Wuhan, China. *JAMA* 2020 Feb 07.\
- 460 8. Huang C, Wang Y, Li X et al. Clinical features of patients infected with 2019 novel
461 coronavirus in Wuhan, China. *Lancet* 2020 Feb 15;395(10223).
- 462 9. Zhang YP et al. Analysis of Epidemiological Characteristics of New Coronavirus
463 Pneumonia. *Chin J Epidemiol*, February 2020, Vol 41, No.2. (Chinese)
- 464 10. World Health Organization. Clinical management of severe acute respiratory infection
465 when Novel coronavirus (nCoV) infection is suspected: interim guidance. In.
466 [https://www.who.int/internal-publications-detail/clinical-management-of-severe-acute-](https://www.who.int/internal-publications-detail/clinical-management-of-severe-acute-respiratory-infection-when-novel-coronavirus-(ncov)-infection-is-suspected)
467 [respiratory-infection-when-novel-coronavirus-\(ncov\)-infection-is-suspected](https://www.who.int/internal-publications-detail/clinical-management-of-severe-acute-respiratory-infection-when-novel-coronavirus-(ncov)-infection-is-suspected).
- 468 11. Read J, Bridgen J, Cummings D et al. Novel coronavirus 2019-nCoV: early estimation
469 of epidemiological parameters and epidemic predictions. Doi: .
470 <http://dx.doi.org/10.1101/2020.01.23.20018549>
- 471 12. Wu JT, Leung K, Leung GM et al. Nowcasting and forecasting the potential domestic
472 and international spread of the 2019-nCoV outbreak originating in Wuhan, China: a
473 modelling study. *Lancet* 2020 Jan 31.
- 474 13. Epidemics prevention conference
475 <http://shanghai.xinmin.cn/xmsq/2020/02/15/31659664.html> (accessed Feb 18th 2020)
476 http://www.zqjtb.com/2020-02/09/content_234857.htm (accessed Feb 18th 2020)
- 477 15. Li Q, Guan X, Wu P et al. Early Transmission Dynamics in Wuhan, China, of Novel
478 Coronavirus-Infected Pneumonia. *N. Engl. J. Med*. 2020 Jan 29.
- 479 16. Guan W, Ni Z, Hu Y, et al. Clinical characteristics of 2019 novel coronavirus infection
480 in China[J]. *medRxiv*, 2020:2020-2022.
- 481 17. Garske T, Legrand J, Donnelly C A, et al. Assessing the severity of the novel influenza
482 A/H1N1 pandemic[J]. *Bmj*, 2009,339:b2840.