

## 1                    **Evidence for gastrointestinal infection of SARS-CoV-2**

2    Fei Xiao<sup>1,2,3</sup>, Meiwen Tang<sup>4</sup>, Xiaobin Zheng<sup>5</sup>, Chunna Li<sup>1</sup>, Jianzhong He<sup>6</sup>, Zhongsi  
3    Hong<sup>1</sup>, Siwen Huang<sup>7</sup>, Zhenyi Zhang<sup>7</sup>, Xianqi Lin<sup>7</sup>, Zhaoxiong Fang<sup>7</sup>, Renxu Lai<sup>7</sup>,  
4    Shoudeng Chen<sup>2,3</sup>, Jing Liu<sup>4</sup>, Jin Huang<sup>4</sup>, Jinyu Xia<sup>1</sup>, Zhonghe Li<sup>8</sup>, Guanmin Jiang<sup>9</sup>,  
5    Ye Liu<sup>5</sup>, Xiaofeng Li<sup>7</sup>, and Hong Shan<sup>2,3,10</sup>

6    1. Department of Infectious Diseases, the Fifth Affiliated Hospital, Sun Yat-sen  
7        University, Zhuhai, Guangdong Province, China

8    2. Guangdong Provincial Engineering Research Center of Molecular Imaging, the  
9        Fifth Affiliated Hospital, Sun Yat-sen University, Zhuhai, Guangdong Province,  
10       China

11   3. Guangdong Provincial Key Laboratory of Biomedical Imaging, the Fifth  
12        Affiliated Hospital, Sun Yat-sen University, Zhuhai, Guangdong Province, China

13   4. Department of Hematology, the Fifth Affiliated Hospital, Sun Yat-sen University,  
14        Zhuhai, Guangdong Province, China

15   5. Department of Respiratory and Critical Care Medicine, the Fifth Affiliated  
16        Hospital, Sun Yat-sen University, Zhuhai, Guangdong Province, China

17   6. Department of Pathology, the Fifth Affiliated Hospital, Sun Yat-sen University,  
18        Zhuhai, Guangdong Province, China

19   7. Department of Gastroenterology, the Fifth Affiliated Hospital, Sun Yat-sen  
20        University, Zhuhai, Guangdong Province, China

21   8. Department of Nephrology, the Fifth Affiliated Hospital, Sun Yat-sen University,  
22        Zhuhai, Guangdong Province, China

23 9. Department of Clinical Laboratory, the Fifth Affiliated Hospital, Sun Yat-sen  
24 University, Zhuhai, Guangdong Province, China

25 10. Department of Interventional Medicine, the Fifth Affiliated Hospital, Sun Yat-sen  
26 University, Zhuhai, Guangdong Province, China

## 27 **Reprint requests**

28 Address reprint request to: Hong Shan MD, PhD, Guangdong Provincial Engineering  
29 Research Center of Molecular Imaging, Guangdong Provincial Key Laboratory of  
30 Biomedical Imaging, Department of Interventional Medicine, the Fifth Affiliated  
31 Hospital, Sun Yat-sen University, 52 East Meihua Road, Zhuhai 519000, Guangdong  
32 Province, China. e-mail: shanhong@mail.sysu.edu.cn; Xiaofeng Li, MD, PhD,  
33 Department of Gastroenterology, the Fifth Affiliated Hospital, Sun Yat-sen University,  
34 52 East Meihua Road, Zhuhai 519000, Guangdong Province, China. e-mail:  
35 zdwylxf@163.com; Ye Liu, MD, PhD, Department of Pathology, the Fifth Affiliated  
36 Hospital, Sun Yat-sen University, 52 East Meihua Road, Zhuhai 519000, Guangdong  
37 Province, China. e-mail: ly77219@163.com. Guanmin Jiang, MD, PhD, Department  
38 of Clinical Laboratory, the Fifth Affiliated Hospital, Sun Yat-sen University, 52 East  
39 Meihua Road, Zhuhai 519000, Guangdong Province, China. e-mail:  
40 Jianggm3@mail.sysu.edu.cn.

## 41 **Acknowledgements**

42 Author Contribution: HS, FX design the study, analyzed the data and wrote the paper.  
43 FX, MT, XZ, CL, JH, and ZH contributed equally to this work.

44 **Conflict of interest**

45 The authors disclose no conflicts.

46 **Funding**

47 This work was funded by the National Natural Science Foundation of China (grant  
48 81870411). The funders had no involvement in study design, writing the report or  
49 decision for publication.

50 **Ethics statement**

51 This study was approved by the Ethics Committee of The Fifth Affiliated Hospital,  
52 Sun Yat-sen University, and all patients signed the informed consent.

53

54

55

56

57

58

59

60

61

62 **Abstract**

63 The new coronavirus (SARS-CoV-2) outbreak originating from Wuhan, China, poses  
64 a threat to global health. While it's evident that the virus invades respiratory tract and  
65 transmits from human to human through airway, other viral tropisms and transmission  
66 routes remain unknown. We tested viral RNA in stool from 73 SARS-CoV-2-infected  
67 hospitalized patients using rRT-PCR. 53.42% of the patients tested positive in stool.  
68 23.29% of the patients remained positive in feces even after the viral RNA decreased  
69 to undetectable level in respiratory tract. The viral RNA was also detected in  
70 gastrointestinal tissues. Furthermore, gastric, duodenal and rectal epithelia showed  
71 positive immunofluorescent staining of viral host receptor ACE2 and viral  
72 nucleocapsid protein in a case of SARS-CoV-2 infection. Our results provide  
73 evidence for gastrointestinal infection of SARS-CoV-2, highlighting its potential  
74 fecal-oral transmission route.

75

76

77

78

79

80

81

82 Since the novel coronavirus (SARS-CoV-2) was identified in Wuhan, China, at the  
83 end of 2019, the virus has spread to 25 countries, infecting more than 68000 people  
84 and causing over 1600 deaths globally. Although a series of extraordinary social  
85 distancing measures have been implemented in China, the number of infections  
86 continues to rise. The viral infection causes a series of respiratory illness including  
87 severe respiratory syndrome, indicating the virus most likely infects respiratory  
88 epithelial cells and spreads mainly via respiratory tract from human to human.  
89 However, viral target cells and organs haven't been fully determined, impeding our  
90 understanding of the pathogenesis of the viral infection and viral transmission routes.  
91 According to a recent case report, SARS-CoV-2 RNA was detected in a stool  
92 specimen<sup>1</sup>, indicating the possibility of the viral extrarespiratory infection and  
93 additional transmission routes to respiratory one. It has been proved that  
94 SARS-CoV-2 uses ACE2 as a viral receptor for entry process<sup>2,3</sup>. ACE2 mRNA is  
95 highly expressed in gastrointestinal system<sup>4</sup>, providing a prerequisite for  
96 SARS-CoV-2 infection. To further understand the clinical significance of  
97 SARS-CoV-2 RNA in feces, we examined the viral RNA in feces from 71 patients  
98 with SARS-CoV-2 during their hospitalization. Viral RNA and intracellular viral  
99 protein staining were also examined in gastrointestinal tissues from one of the  
100 patients.

## 101 **Methods**

102 From February 1 to 14, 2020, clinical specimens including serum, nasopharyngeal and  
103 oropharyngeal swabs, urine, stool and tissues from 73 SARS-CoV-2-infected

104 hospitalized patients were obtained in accordance with China Disease Control and  
105 Prevention (CDC) guidelines and tested for detection of SARS-CoV-2 RNA in 73  
106 hospitalized SARS-CoV-2-infected patients using the China CDC-standardized  
107 quantitative polymerase chain reaction assay<sup>5</sup>. Clinical characteristics of the 73  
108 patients were shown in Table 1. The esophageal, gastric, duodenal and rectal tissues  
109 were obtained from one of the patients using endoscopy. The patient's clinical  
110 information was described in Supplementary Case Clinical Information and  
111 Supplementary table 1. Endoscopic overview images were shown in Supplementary  
112 Figure 1. Histological staining (H&E) as well as viral receptor ACE2 and viral  
113 nucleocapsid (NP) staining were performed as described in Supplementary methods.  
114 The images were obtained using a laser scanning confocal microscopy (LSM880, Carl  
115 Zeiss MicroImaging) and shown in Figure 1.

## 116 **Results**

117 From February 1 to 14, 2020, of all the 73 SARS-CoV-2-infected patients, 39  
118 (53.42%) including 25 males and 14 females tested positive for SARS-CoV-2 RNA in  
119 stool (Table 1). The age of patients with positive SARS-CoV-2 RNA in stool ranges  
120 from 10 months to 78 years old (Table 1). Duration time of positive stool ranges from  
121 1 to 12 days till the date of writing the manuscript on February 14, 2020 (Table 1).  
122 Furthermore, 17 (23.29%) patients remained positive in stool after showing negative  
123 in respiratory samples (Table 1).

124 Gastrointestinal endoscopy was performed on the patient described in Supplementary

125 Material. Abnormality was not observed in the gastric, duodenum, colon and rectum  
126 except for mucosal lesions and bleeding in esophagus as described in Supplementary  
127 results (Supplementary Figure 1). All the gastrointestinal tissue samples obtained  
128 from esophageal, esophageal non-lesion, gastric, duodenum and rectum mucosa tested  
129 positive for SARS-CoV-2 RNA (Supplementary Table 1).

130 The mucous epithelium of esophagus, stomach, duodenum and rectum showed no  
131 significant damage with H&E staining (Figure 1). Infiltrate of occasional lymphocytes  
132 was observed in esophageal squamous epithelium (Figure 1). In lamina propria of  
133 stomach, duodenum and rectum, numerous infiltrating plasma cells and lymphocytes  
134 with interstitial edema were seen (Figure 1).

135 Importantly, viral host receptor ACE2 stained positive mainly in the cytoplasm of  
136 gastrointestinal epithelial cells (Figure 1). To note, we observed that ACE2 is rarely  
137 expressed in esophageal epithelium, but abundantly distributed in cilia of glandular  
138 epithelia (Figure 1). Staining of viral nucleocapsid protein (NP) was visualized in  
139 the cytoplasm of gastric, duodenal and rectum glandular epithelial cell, but not in  
140 esophageal epithelium (Figure 1).

## 141 **Discussion**

142 In this manuscript, we provide evidence for gastrointestinal infection of SARS-CoV-2  
143 and its possible fecal-oral transmission route. As SARS-CoV-2 continues to spread,  
144 it's important to elucidate the viral transmission routes and take appropriate measures  
145 to control viral spread. Since viruses spread from infected to uninfected cells<sup>6</sup>, viral

146 specific target cells or organs are determinants of viral transmission routes.  
147 Receptor-dependent viral entry is the first step of SARS-CoV-2 infection. Our  
148 immunofluorescent data showed that ACE2 protein, which has been proved to be the  
149 receptor of SARS-CoV-2, is abundantly expressed in the glandular cells of gastric,  
150 duodenal and rectal epithelia, allowing the entry of SARS-CoV-2 into the cells. ACE2  
151 staining is rarely seen in esophageal mucosa probably because esophageal epithelium  
152 is mainly composed of squamous epithelial cells, while gastrointestinal epithelium  
153 below esophagus has abundant ACE2-expressed glandular epithelial cells.

154 Coronavirus genome encodes the spike protein, nucleocapsid protein, membrane  
155 protein and envelop protein to form a complete viral particle<sup>7</sup>. Beyond binding to viral  
156 genome to make up nucleocapsid, the nucleocapsid protein (NP) localizes to  
157 endoplasmic reticulum-Golgi region to facilitate viral assembly and budding<sup>8</sup>. Our  
158 results of viral RNA detection and intracellular staining of NP in gastric, duodenal and  
159 rectal epithelia demonstrate that SARS-CoV-2 infects these gastrointestinal glandular  
160 epithelial cells. Although viral RNA was also detected in esophageal mucous tissue,  
161 absence of NP staining in esophageal mucosa indicates low viral infection in  
162 esophageal mucosa probably due to lack of ACE2 protein expression. The data of  
163 viral protein staining are in line with the data of ACE2 staining, confirming the  
164 importance of ACE2 protein expression for SARS-CoV-2 infection.

165 After viral entry, virus-specific RNA and proteins are synthesized in the cytoplasm to  
166 assembly new virions<sup>9</sup>, which can be released to gastrointestinal tract. Recently, we  
167 and others have isolated infectious SARS-CoV-2 from stool (Manuscript under



168 revision), confirming the release of the infectious virions to the gastrointestinal tract.

169 Therefore, fecal-oral transmission could be an additional route for SARS-CoV-2  
170 spread. Prevention of viral fecal-oral transmission should be taken into consideration  
171 to control the spread the virus.

172 The immune response to the viral infection of gastrointestinal tract needs to be further  
173 investigated. In this report, we observed infiltration of plasma cells and lymphocytes  
174 without obvious damage in gastrointestinal mucosa. The lesion and bleeding of the  
175 esophageal mucosa from a case of SARS-CoV-2 infection was probably  
176 stress-associated.

177 Our results highlight the clinical significance of testing viral RNA in feces by  
178 real-time reverse transcriptase polymerase chain reaction (rRT-PCR) since infectious  
179 virions released from gastrointestinal tract can be monitored by the test. According to  
180 the current CDC guidance for disposition of patients with SARS-CoV-2, the decision  
181 to discontinue Transmission-Based Precautions for hospitalized SARS-CoV-2 patients  
182 is based on negative results of rRT-PCR testing for SARS-CoV-2 from at least two  
183 sequential respiratory tract specimens collected  $\geq 24$  hours apart<sup>10</sup>. However, we  
184 observed in more than 20% of SARS-CoV-2 patients that the viral RNA remained  
185 positive in feces even after negative conversion of the viral RNA in respiratory tract,  
186 indicating that viral fecal-oral transmission can occur even after viral clearance in  
187 respiratory tract. Therefore, we strongly recommend that rRT-PCR testing for  
188 SARS-CoV-2 from feces should be performed routinely in SARS-CoV-2-infected  
189 patients, and Transmission-Based Precautions for hospitalized SARS-CoV-2-infected

190 patients should continue if feces tests positive by rRT-PCR testing. In summary, our  
191 results provide evidence for gastrointestinal infection of SARS-CoV-2, which could  
192 result in fecal-oral transmission.

193

## 194 **References**

- 195 1. Schlaff WD, Ackerman RT, Al-Hendy A, et al. Elagolix for Heavy Menstrual  
196 Bleeding in Women with Uterine Fibroids. *N Engl J Med* 2020;382:328-40.
- 197 2. Zhou P, Yang XL, Wang XG, et al. A pneumonia outbreak associated with a new  
198 coronavirus of probable bat origin. *Nature* 2020.
- 199 3. Munster VJ, Koopmans M, van Doremalen N. A Novel Coronavirus Emerging in  
200 China - Key Questions for Impact Assessment. *N Engl J Med* 2020.
- 201 4. Harmer D, Gilbert M, Borman R, Clark KL. Quantitative mRNA expression  
202 profiling of ACE 2, a novel homologue of angiotensin converting enzyme. *FEBS Lett*  
203 2002;532:107-10.
- 204 5. Li Q, Guan X, Wu P, et al. Early Transmission Dynamics in Wuhan, China, of  
205 Novel Coronavirus-Infected Pneumonia. *N Engl J Med* 2020.
- 206 6. Xiao F, Fofana I, Heydmann L, et al. Hepatitis C virus cell-cell transmission and  
207 resistance to direct-acting antiviral agents. *PLoS Pathog* 2014;10:e1004128.
- 208 7. Masters PS. The molecular biology of coronaviruses. *Adv Virus Res*  
209 2006;66:193-292.
- 210 8. Klumperman J, Locker JK, Meijer A, Horzinek MC, Geuze HJ, Rottier PJ.  
211 Coronavirus M proteins accumulate in the Golgi complex beyond the site of virion

212 budding. J Virol 1994;68:6523-34.

213 9. Weiss SR, Navas-Martin S. Coronavirus pathogenesis and the emerging pathogen

214 severe acute respiratory syndrome coronavirus. Microbiol Mol Biol Rev

215 2005;69:635-64.

216 10. CDC. Interim Considerations for Disposition of Hospitalized Patients with

217 2019-nCoV Infection.

218 (<https://www.cdc.gov/coronavirus/2019-ncov/hcp/disposition-hospitalized-patients.html>

219 ).

220

221

222 **Table 1. Clinical characteristics of patients with SARS-CoV-2 infection**

|                        | S+          | R+S+         | (R+S+/S+)% | ~R+S+       | (~R+S+/R+S+)% | ~R-S+        | (~R-S+/R+S+)% | ~R-S-      | (~R-S-/R+S+)% |
|------------------------|-------------|--------------|------------|-------------|---------------|--------------|---------------|------------|---------------|
| Sex                    | 73          | 39           | 53.42%     | 6           | 15.38%        | 17           | 43.59%        | 16         | 41.03%        |
| F                      | 32          | 14           | 43.75%     | 2           | 14.29%        | 5            | 35.71%        | 7          | 50.00%        |
| M                      | 41          | 25           | 69.98%     | 4           | 16.00%        | 12           | 48.00%        | 9          | 36.00%        |
| Age                    | 43 (0.83-7) | 49 (0.83-78) |            | 52.5 (3-78) |               | 44 (0.83-69) |               | 47 (19-75) |               |
| Tumours                | 7           | 3            | 42.86%     | 1           | 33.00%        | 1            | 33.00%        | 1          | 33.00%        |
| Surgical history       | 17          | 8            | 47.06%     | 1           | 12.50%        | 4            | 50.00%        | 3          | 37.50%        |
| Ulcer                  | 0           | 0            |            | 0           |               | 0            |               | 0          |               |
| Smoking                | 9           | 4            | 44%        | 0           | 0             | 2            | 50.00%        | 2          | 50.00%        |
| Respiratory symptoms   | 53          | 30           | 56.60%     | 4           | 13.33%        | 13           | 43.33%        | 13         | 43.33%        |
| Typical chest CT       | 66          | 36           | 54.55%     | 5           | 13.89%        | 16           | 44.44%        | 15         | 41.67%        |
| Diarrhoea              | 26          | 17           | 65.38%     | 2           | 11.76%        | 6            | 35.29%        | 9          | 52.94%        |
| Gastrointestinal bleed | 10          | 4            | 40%        | 1           | 25.00%        | 1            | 25.00%        | 2          | 50.00%        |
| Use of corticosteroid  | 21          | 12           | 57.14%     | 2           | 16.67%        | 3            | 25.00%        | 7          | 58.33%        |
| Antibiotic therapy     | 60          | 35           | 52.05%     | 6           | 17.14%        | 14           | 40.00%        | 15         | 42.86%        |
| Antiviral therapy      | 73          | 38           | 49.32%     | 6           | 15.79%        | 16           | 42.11%        | 16         | 42.11%        |
| PPIs therapy           | 51          | 24           | 47.06%     | 4           | 16.67%        | 6            | 25.00%        | 14         | 58.33%        |
| NSAID                  | 12          | 6            | 50.00%     | 1           | 16.67%        | 2            | 33.33%        | 3          | 50.00%        |
| ICU                    | 4           | 4            | 100%       | 1           | 25.00%        | 1            | 25.00%        | 2          | 50.00%        |

223  
224 R: respiratory specimens, S+: tested positive in stool during hospitalization, CT: computerized tomography,

225 PPIs: proton pump inhibitors, ICU: Intensive care unit, NSAID= Non-steroidal anti-inflammatory drugs,

226 ~R+S+: remained positive in both R and S till the date of writing the manuscript on February 14th, 2020,

227 ~R-S+: tested negative in R but remained positive in stool till the date of writing the manuscript on February 14th, 2020.

228

229

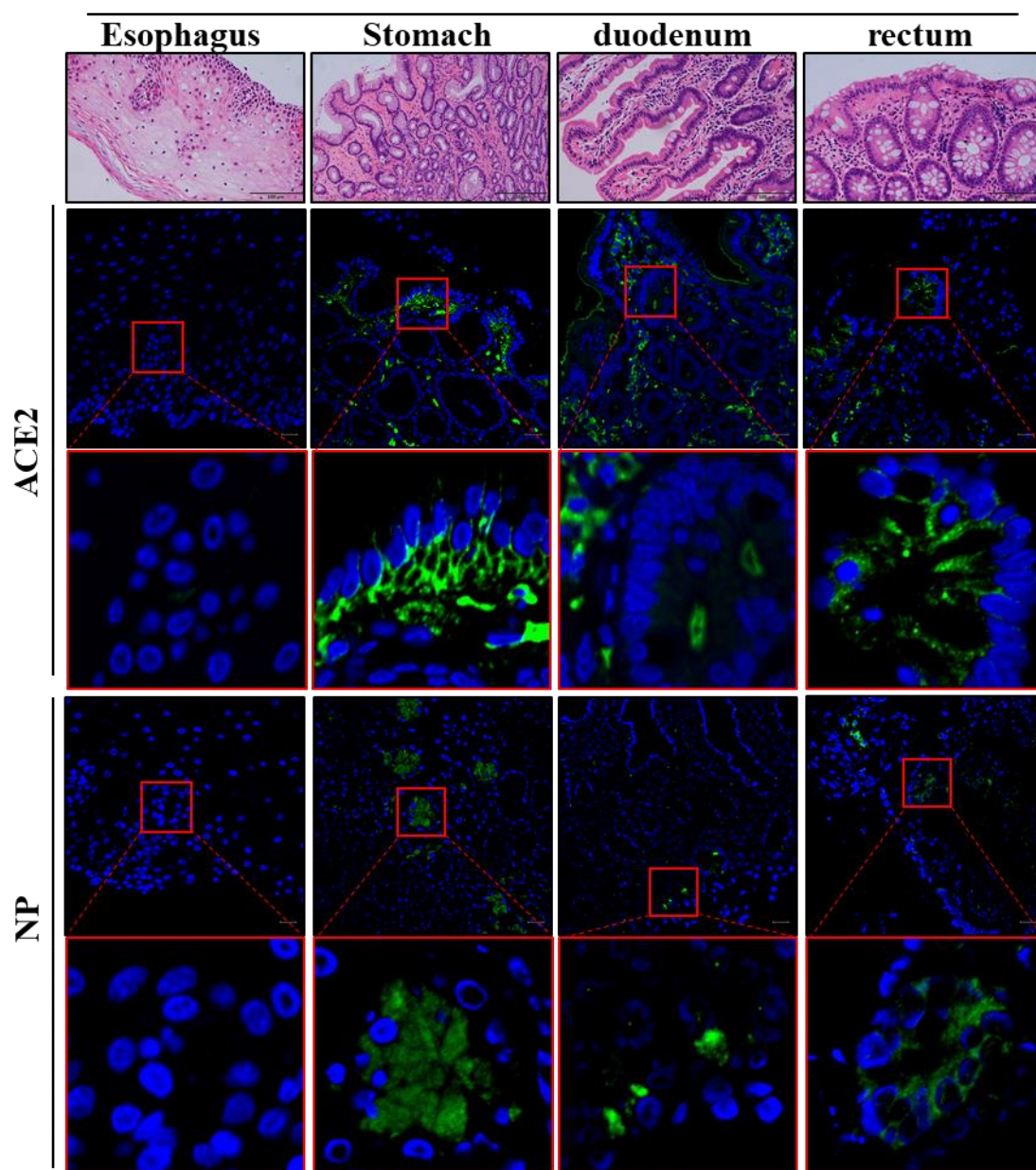
230

231

232 **Figure 1. Images of Histological and Immunofluorescent Staining of**  
233 **Gastrointestinal Tissues.**

234 Shown are images of histological and immunofluorescent staining of esophagus,  
235 stomach, duodenum and rectum. The scale bar in the histological image represents  
236 100 microns. The scale bar in the immunofluorescent image represents 20 microns.

237



238

239