

1 **The lockdown of Hubei Province causing different transmission**  
2 **dynamics of the novel coronavirus (2019-nCoV) in Wuhan and**  
3 **Beijing**

4 Xinhai Li<sup>1,2\*</sup>, Xumao Zhao<sup>3\*</sup>, Yuehua Sun<sup>1,2</sup>

5 <sup>1</sup> Key Laboratory of Animal Ecology and Conservation Biology, Institute of Zoology,  
6 Chinese Academy of Sciences, Beijing, 100101, China

7 <sup>2</sup> University of Chinese Academy of Sciences, Yuquan Road, Beijing 100049, China

8 <sup>3</sup> State Key Laboratory of Grassland Agro-Ecosystem/Institute of Innovation Ecology,  
9 Lanzhou University, Lanzhou, 730020, China

10 \*The authors have the same contribution to the manuscript.

11 Correspondence to: [sunyh@ioz.ac.cn](mailto:sunyh@ioz.ac.cn); [lixh@ioz.ac.cn](mailto:lixh@ioz.ac.cn)

12 **Abstract**

13 **Background**

14 After the outbreak of novel coronavirus (2019-nCoV) starting in late 2019, a number  
15 of researchers have reported the predicted the virus transmission dynamics. However,  
16 under the strict control policy the novel coronavirus does not spread naturally outside  
17 Hubei Province, and none of the prediction closes to the real situation.

18 **Methods and findings**

19 We used the traditional SEIR model, fully estimated the effect of control measures, to  
20 predict the virus transmission in Wuhan, the capital city of Hubei Province, and  
21 Beijing. We forecast that the outbreak of 2019-nCoV would reach its peak around  
22 March  $6 \pm 10$  in Wuhan and March  $20 \pm 16$  in Beijing, respectively. The infectious  
23 population in Beijing would be much less (only 0.3%) than those in Wuhan at the  
24 peak of this transmission wave. The number of confirmed cases in cities inside Hubei  
25 Province grow exponentially, whereas those in cities outside the province increase  
26 linearly.

27 **Conclusions**

28 The unprecedented province lockdown substantially suspends the national and global  
29 outbreak of 2019-nCoV.

30 **Key words:** city closure, quarantine, pandemic, public health, SEIR model,  
31 transmission

## 32 1. Introduction

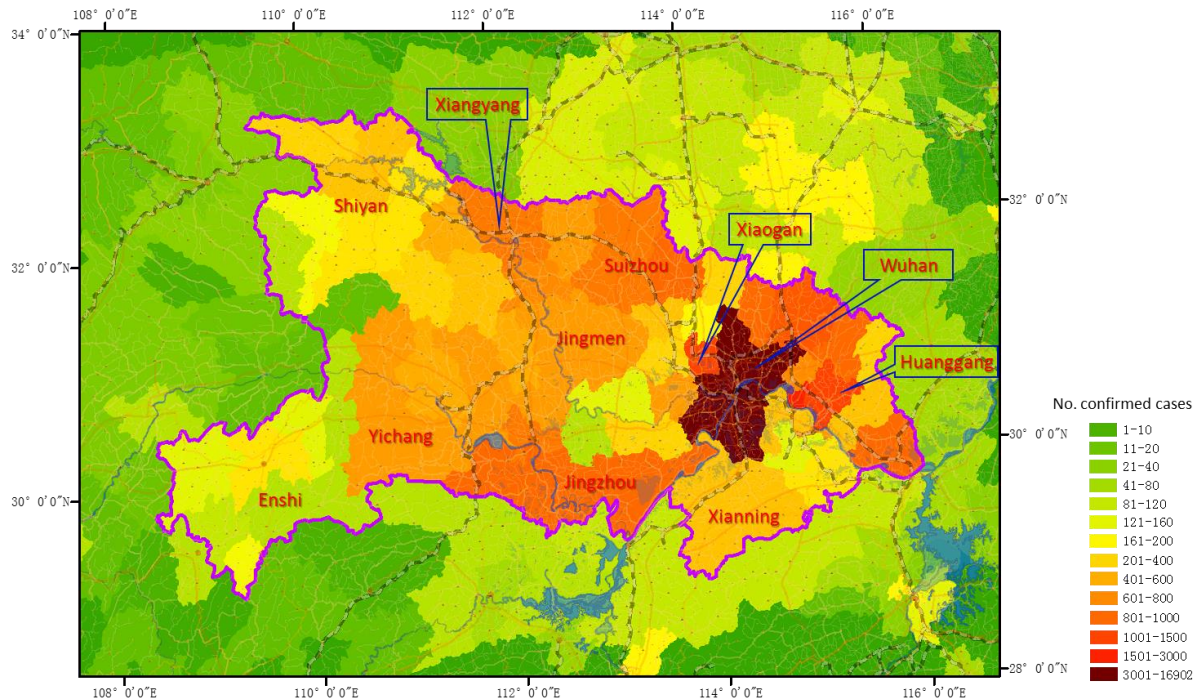
33 A novel coronavirus (2019-nCoV) appeared in December 2019 in Wuhan, Hubei  
34 Province in central China had triggered city closure on Jan. 23, 2020, and lockdown  
35 of all major cities in the province a few days later (Fig. 1). At present, over 50 million  
36 people are constrained locally. Due to the threat of 2019-nCoV to public health, World  
37 Health Organization (WHO) declared novel coronavirus (2019-nCoV) outbreak to be  
38 “public health emergency of international concern” on Jan. 30, 2020 [1]

39 It is always a great challenge to fight effectively against a pandemic [2, 3],  
40 especially when little is known about the new virus [4]. Ideally, governments,  
41 communities and medical services take rapid, effective, rational, and proportionate  
42 responses to such health emergencies; either minimalist or maximalist responses may  
43 potentially be very harmful [5, 6].

44 To facilitate decision making against the 2019-nCoV, researchers had predicted  
45 the transmission dynamics in different scenarios. Read et al. [7] estimated that only  
46 5.1% (95% CI, 4.8–5.5) of infections in Wuhan were identified; ahead of 14 days,  
47 they predicted the number of infected people in Wuhan to be greater than 250  
48 thousand on Feb. 4, 2020. Read et al. [7] suggested, before the city closure of Wuhan,  
49 that travel restrictions from and to Wuhan city are unlikely to be effective and 2019-  
50 nCoV would outbreak in Beijing, Shanghai, etc. with much larger sizes. Leung et al.  
51 [8] estimated the transmission dynamics of 2019-nCoV in six major cities in China  
52 under six scenarios: 0%, 25%, 50% transmission reduction with and without 50%  
53 mobility reduction. However, the assumption of 50% mobility reduction is much  
54 lower than the real situation. China government enforced tourism ban on Jan. 24, and  
55 carried out other control measures such as extending holidays, closing schools,  
56 cancelling meetings, suggesting a 14-day quarantine after travel. In particular,  
57 highway traffic control is strictly implemented in many cities, towns, and villages.  
58 The majority of communities in large cities such as Beijing and Shanghai have closed  
59 to visitors.

60 Under the circumstance of strict control measures, we forecast the transmission  
61 dynamics of Wuhan and Beijing. Wuhan is the source of 2019-nCoV, suffered a long  
62 history (two months) of virus transmission, with lack of medical resources to

63 quarantine exposed and suspect people. Beijing is a larger city with 22 million  
64 residents, including 10 million inbound passengers after the holidays of Chinese New  
65 Year. We believe our estimation is close to the real situation and is helpful for 2019-  
66 nCoV control.



67 Fig. 1 Lockdown of Hubei Province to enclose novel coronavirus (2019-nCoV). The  
68 gradient color represents the number of confirmed cases in Hubei Province and adjacent  
69 areas on Feb. 9 (24:00), 2020.

## 70 2. Methods

71 We used the Susceptible-Exposed-Infectious-Recovered (SEIR) model to estimate the  
72 dynamics of the novel coronavirus (2019-nCoV).

### 73 2.1. The SEIR Model

74 The SEIR model has the form [9]:

$$\begin{aligned}\frac{dS}{dt} &= -\beta \frac{I}{N} S \\ \frac{dE}{dt} &= \beta \frac{I}{N} S - \alpha E \\ \frac{dI}{dt} &= \alpha E - \nu I \\ \frac{dR}{dt} &= \nu I\end{aligned}\quad (\text{Equation 1})$$

75 where  $S$  is the susceptible population,  $E$  is the exposed population,  $I$  is the infectious  
76 population,  $R$  is the recovered population,  $t$  is time (the number of days after the  
77 emergence of the first case),  $N$  is the total population,  $\beta$  is the average number of  
78 infected individuals per infectious subject per unit time,  $\alpha$  is the reciprocal of average  
79 latent period,  $\nu$  is the rate of recovery (reciprocal of duration of the infection).

80 We assumed the infection rate of the novel coronavirus decreased when  
81 temperature goes up starting from March 1, 2020, since other viruses have a seasonal  
82 pattern (wave), such as the 2009 H1N1 pandemic [10]. As such, we defined the  
83 decreasing infection rate exponentially as below:

$$\beta_t = \beta \times (1 - C)^{t-90} \quad (\text{Equation 2})$$

84 where  $\beta_t$  is the infect rate at the time  $t$  (the first day,  $t = 1$ , is Dec. 1, 2019, based on  
85 the first confirmation of 2019-nCoV on Dec. 8);  $C$  is a constant (simulated at 0.01-  
86 0.1) defining the decreasing rate of transmission per day.

87 For the cities with continuous imported infected people, we modify the growth  
88 rate of infectious population as:

$$\frac{dI}{dt} = \alpha E - \nu I + \text{imported} \quad (\text{Equation 3})$$

90 where *imported* is the daily number of imported infections.

## 91 2.2. Determination of Model Parameters

92 The basic reproductive number  $R_0$  for 2019-nCoV had been estimated in several  
93 independent studies (Table 1). It was noticed that changes in reporting rate of  
94 confirmed cases substantially affected  $R_0$  estimation [11]. In fact,  $R_0$  is highly

95 associated with the intensity of control measures. We used a series values of  $R_0$  to fit  
96 the number of cases in Wuhan and Beijing.

97 Table 1. The estimated basic reproductive number  $R_0$  for 2019-nCoV

$R_0$	Lower CI	Upper CI	CV	Citations
3.8	3.6	4.0	0.05	[7]
2.68	2.47	2.86	0.07	[8]
2.24	1.96	2.55	0.13	[11]
3.58	2.89	4.39	0.20	[11]
2.90	2.32	3.63	0.22	[12]
2.92	2.28	3.67	0.23	[12]
6.47	5.71	7.23	0.12	[13]

98 The mean value of  $R_0$  in Table 1 is 3.51, and the mean CV (coefficient of  
99 variation) is 0.15.

100 The incubation period ( $1/\alpha$  in SEIR model) was estimated as 6.4 (95% CI: 5.6 -  
101 7.7) days, ranging from 2.1 to 11.1 days [14]. Liu et al. [12] provided a lower value,  
102 4.8 days, for the period. Based on information from other coronavirus diseases, such  
103 as SARS and MERS, the incubation period of 2019-nCoV could be up to 14 days  
104 [15]. We used 6 days as the incubation period for our simulation.

105 Other model parameters are: population size of Beijing and Wuhan are 22  
106 million and 10 million, respectively, based on the data (for 2018) provided by  
107 National Bureau of Statistics of China at  
108 <http://data.stats.gov.cn/easyquery.htm?cn=E0105>. The proportion of susceptible is  
109 50% of the total population. The rate of recovery  $\nu = 1/5$  per day. The basic  
110 reproductive number  $R_0$  does not directly used in the SEIR model. It has the following  
111 function with the model variables and parameters:  $R_0 = \beta/\nu \times S/N$ .

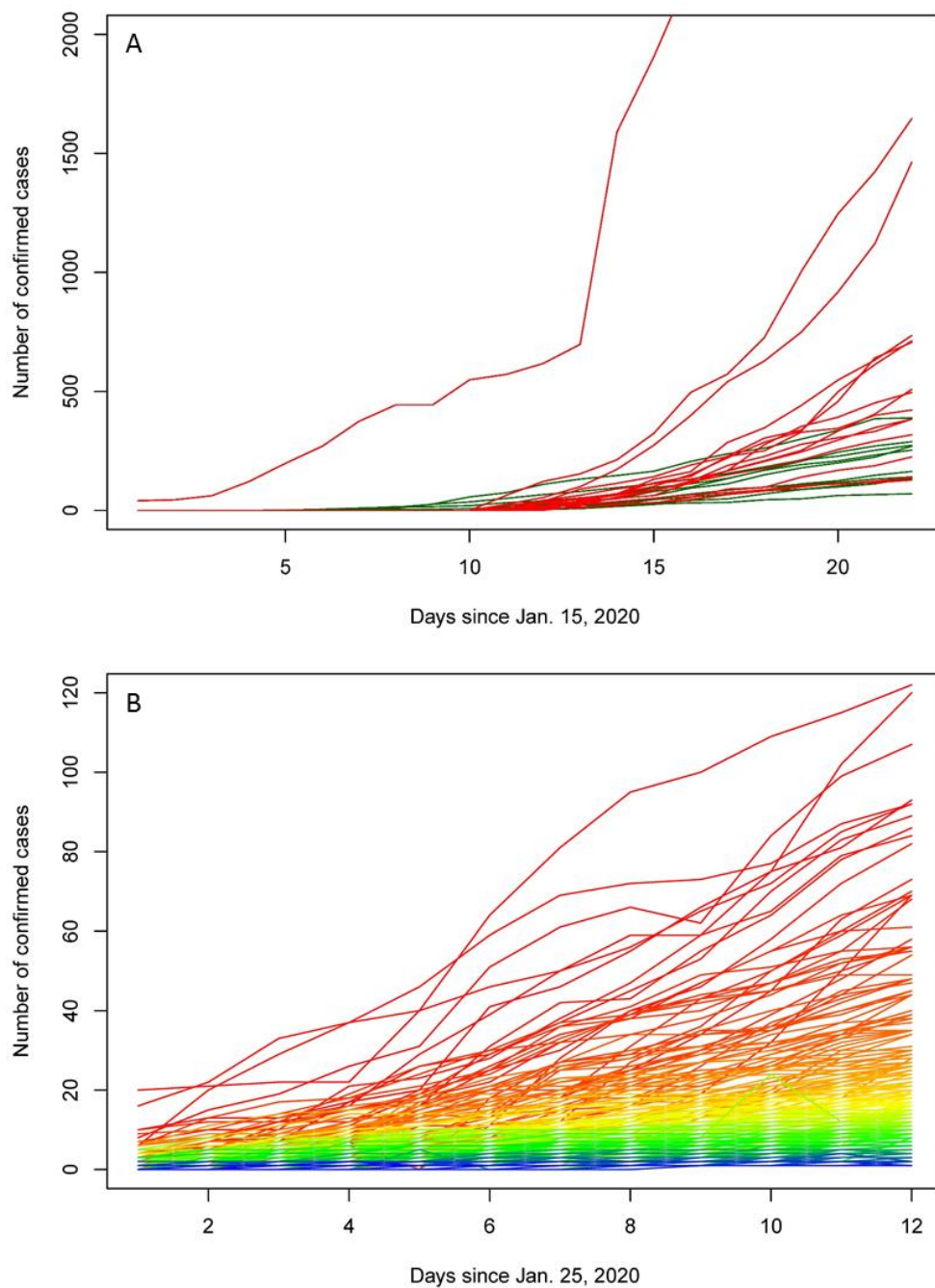
112 To make our analysis repeatable, we posted the data used in this study and R  
113 code for the SEIR model at <https://github.com/Xinhai-Li/2019-nCoV>.

### 114 3. Results

115 Until 9:00 on Feb. 9, the number of confirmed cases reaches 37251  
116 ([https://voice.baidu.com/act/newpneumonia/newpneumonia/?from=osari\\_pc\\_1](https://voice.baidu.com/act/newpneumonia/newpneumonia/?from=osari_pc_1)). In  
117 Hubei Province, the number of confirmed cases in the capital city Wuhan and other



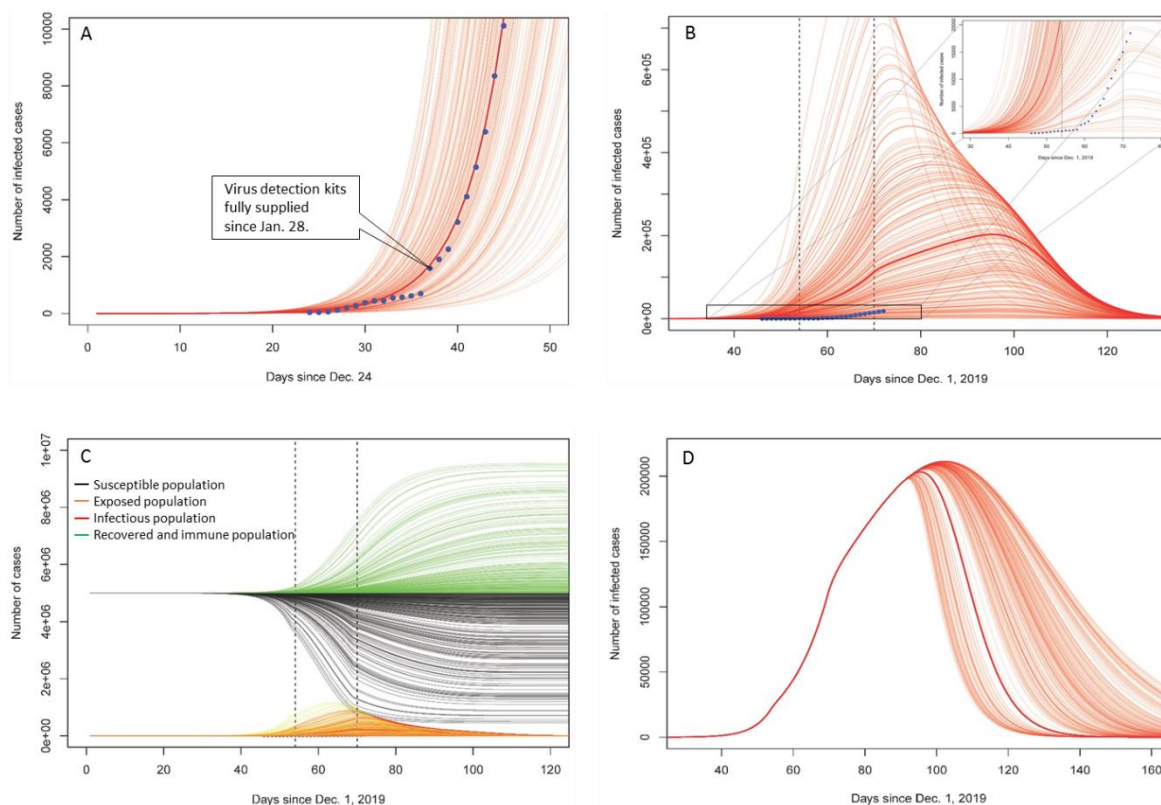
118 prefecture-level cities grow exponentially; whereas in other cities in China, the  
119 number of infections increase linearly (Fig. 2).



120 Fig. 2 The number of confirmed cases (Jan. 25 to Feb. 5) of 2019-nCoV in 332 cities in  
121 China. A. The number of cases in top 26 cities. The red lines show the numbers of cases  
122 in cities inside Hubei Province, and the green lines demonstrate those in other cities in  
123 China. B. The number of cases in other 306 cities.

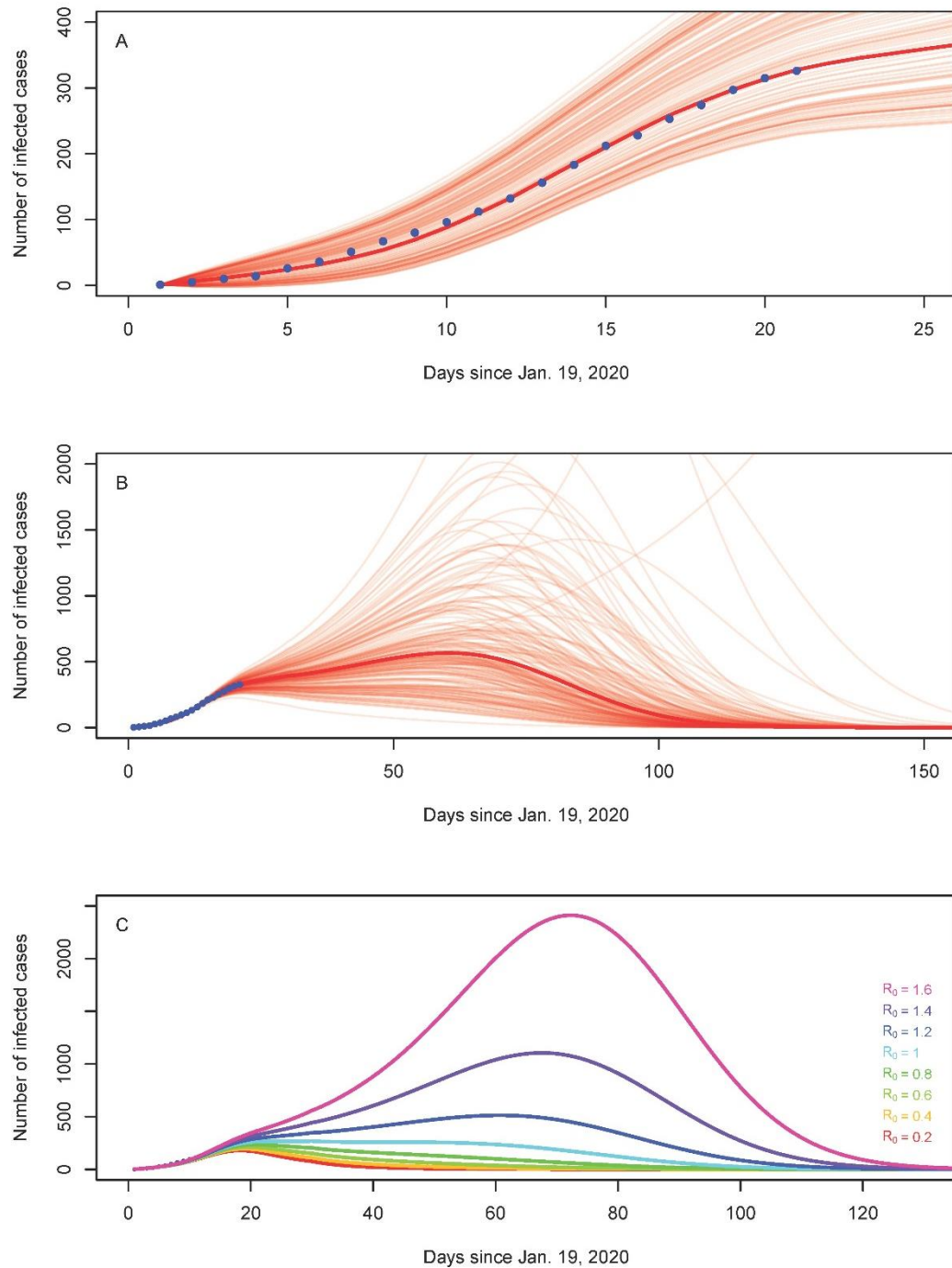
124 We simulated the virus transmission process using the SEIR model and  
125 estimated the model parameters for Wuhan (Fig. 3) and Beijing (Fig. 4). For Wuhan,  
126 we first fit the number of confirmed cases (Fig. 3A), where the  $R_0$  is 5.75, much  
127 higher than that in most studies yet lower than Tang et al.'s result (Table 1). Due to  
128 the reality that a number of infected people in Hubei Province have not been checked  
129 [7, 8], we fit a more realistic transmission dynamics, under a condition of a fixed  
130 starting day on Dec. 1, 2019 (Fig. 3B). The best fit model having the  $R_0$  5.0. After the  
131 city closure on Jan. 23, the residents of Wuhan performed strong self-protection by  
132 isolating themselves at home, so that we halved basic reproductive number to 2.5,  
133 reflecting the pattern of family cluster infection of the virus. Since Feb. 8, a door-to-  
134 door check was started in Wuhan in order to take all confirmed and suspected people  
135 into medical care, and the transmission between family members dropped greatly. As  
136 such, we further decrease the  $R_0$  to 1.5. With these transmission rates, the infectious  
137 population could reach the peak of  $1.75 \pm 2.12 \times 10^5$  on March  $6 \pm 10$ , 2020. The  
138 warming climate, based on Equation 2, may shorten the transmission duration by 1-2  
139 months (Fig. 3D).

140 For Beijing, about half of the infections were directly imported from Wuhan [8].  
141 We assume the infection flow would last for 30 days (from Jan. 19 to Feb. 18), caused  
142 by the 10 million people leaving the returning Beijing for holidays. We simulated the  
143 numbers of imported cases and found the best fit of daily imported cases for the 30  
144 days following a normal distribution, with mean value and SD to be  $19 \pm 12.7$   
145 individuals / day. To estimate the fluctuation of this time series of imported cases, we  
146 calculated the standard deviation of the mean value (19 individuals / day) of the daily  
147 imported patients from Jan. 19 to Feb. 8, which is 3.67. We adopted this uncertainty  
148 to run 200 simulation, and found the  $R_0$  1.4 is the perfect fit (Fig. 4A). Considering  
149 the strict community locking (close to any visitors) and other extreme control  
150 measures (such as office building control, i.e. checking body temperature for every  
151 one and refusing visitors) in Beijing, we adopted a lower  $R_0$  1.2 after the first 30 days  
152 of transmission. The uncertainty of  $R_0$  was simulated with CV = 15% (see Table 1),  
153 and the results indicate that the infectious population may reach  $607 \pm 553$  on March  
154  $20 \pm 16$  (Fig. 4B). The uncertainty of the transmission dynamics, as simulated by the  
155 SEIR model, is very high due to large variance in imported cases and  $R_0$  (Fig. 4).



156 Fig. 3 Simulated ( $n = 200$ ) 2019-nCoV transmission dynamics in Wuhan. The CV of  $R_0$  is  
 157 15% for 200 simulations. A. Fit SEIR model to the published confirmed number of cases  
 158 in Wuhan. The blue dots show the number of confirmed cases. The  $R_0$  is 5.75. B. Fit  
 159 SEIR model based on the “real” starting date on Dec. 1, 2019. The  $R_0$  is 5 before Jan.  
 160 23, 2.5 between Jan. 23 and Feb. 8, 1.5 after Feb. 8. The dotted vertical lines indicate  
 161 the dates of city closure (Jan. 23) and door-to-door checking (Feb. 8). C. The dynamics  
 162 of susceptible, exposed, infectious and recover/immune populations. Fig. 3B is a part of  
 163 Fig. 3C. D. The dynamics of infectious population under the effect of warming climate ( $C =$   
 164  $0.1$ ,  $SD = 0.03$ ).





165 Fig. 4 Predicted infectious population of 2019-nCoV in Beijing using SEIR. A. Predicted  
 166 infectious population at the early stage of transmission. The mean imported cases of  
 167 infection is 19 persons / day for 30 days, and the standard deviation of this mean value is  
 168 3.67 for 200 simulations. The  $R_0$  is fixed at 1.4. The blue dots show the number of  
 169 confirmed cases B. Predicted infectious population by 200 simulations at the whole  
 170 transmission period. The  $R_0$  decreases to  $1.2 \pm 0.18$  due to strict control. C. Predicted  
 171 infectious population in Beijing with a series of  $R_0$  values. The parameter C (for  
 172 temperature effect) in Equation 3 is 0.001 for Fig. 4B and Fig. 4C.

#### 173 4. Discussion

174 We simulated the transmission dynamics of 2019-nCoV, with taking into account of  
175 the strict control measures enforced in the two cities. For Wuhan, city closure was a  
176 chock upon the local residents and they took much better protection than before.  
177 Accordingly, we halved the  $R_0$  after the city closure. As to Beijing, strict control  
178 measures have been implemented. As a result, the local infection happened only 41  
179 times until Feb. 3, with 124 people infected, which equals to half of the confirmed  
180 cases [16]. The dynamics of virus transmission are dramatically different within and  
181 without Hubei Province (Fig. 2), so that we gave different model parameters for the  
182 two cities. Our results about infectious population in Wuhan is lower than Read et  
183 al.'s estimation by 60%. Our estimation for Beijing is also much lower than the  
184 prediction of other studies [e.g. 7, 8]. We believe we provide a more realistic forecast,  
185 as we are witnessing the strict prevention activities carried out by all organizations  
186 and local communities in Beijing, and the linear increase (not exponential increase) of  
187 daily confirmed cases has proved the effectiveness of control measures.

188 China is running an antiviral campaign against 2019-nCoV. Besides the  
189 lockdown of Hubei Province, many cities blocked the highway and stopped the traffic  
190 through their domain. The longest vacation (for Chinese New Year) had been  
191 extended twice. The majority of people quarantine themselves at home for 14 days  
192 after travel. All domestic and international tourism were cancelled and banned.  
193 Numerous meetings, games, shows have been postponed. Schools are still closed.  
194 Compared with the prevention measures against SARS 17 years ago, this campaign  
195 has much stricter control on local communities (only accessible to residents). In the  
196 meantime, every people wear a mask during outdoor activities. Mandatory quarantine  
197 for close contactors is not enforced at this time.

198 There are three difficulties in the antiviral campaign. 1. The incubation period  
199 of 2019-nCoV is long. 2. Some patients have no symptoms yet they are infectious.  
200 Although a case of no symptom transmission [17] had been proved flaw [18], more  
201 other cases had been reported in many sources such as newspapers, website, and  
202 Wechat, etc. The current prevention method, body temperature checking, could not  
203 detect such people. 3. The false negative rate of 2019-nCoV diagnosis is high. For  
204 example, Dr. Wenliang Li (WHO Twitter mourned his death due to 2019-nCoV on

205 Feb. 6, 2020) had mentioned at his Wechat account that the nucleic acid detection for  
206 him was negative, when he suffered breath difficulty. We think it would have a longer  
207 fight (Fig. 3 & 4) against 2019-nCoV than SARS and MERS.

208 Wuhan can represent the situation of other cities in Hubei Province. After the  
209 lockdown, these cities are isolated. Even over ten thousand medical workers from  
210 other cities all over China have entered Wuhan for help, the infectious population is  
211 still too large to be taken care of. However, starting from Feb. 2 and Feb. 8, two newly  
212 established hospitals (Huoshenshan and Leishenshan Hospitals) with altogether 2500  
213 beds for infectious patients have been already in service. With square bay hospitals  
214 having been built and coming into use, and a door to door checking of all residents in  
215 Wuhan started on Feb. 8, all infected and suspected people in Wuhan would be under  
216 medical care. The infectious population in Wuhan, under the progressive prevention  
217 activities, can be substantially lower (Fig. 3B) than the situation of natural  
218 transmission of the virus.

219 Beijing is a representative of other large cities outside Hubei Province in China.  
220 In Beijing, all confirmed and suspected cases have been taken into designated  
221 hospitals, with their close contactors being tracked and quarantined in hotels or at  
222 home. Similar controls are being implemented in other Chinese cities. The linear  
223 increases of total number of confirmed cases (Fig. 2) indicates the spread of the virus  
224 is under strictly control. The lockdown of Hubei Province substantially decreased the  
225 imported infections, ensure the situation being manageable outside the province.

226 We kept the parameters of incubation period and serial interval constant for all  
227 simulations. The uncertainty of these parameters also influences the results. The  
228 estimation of  $R_0$ , its variance, and the rate of susceptible population, as well as the  
229 effect of control measures and warming climate, are relatively arbitrary. In spite of the  
230 weakness, we provide a more accurate estimation than previous studies. We hope our  
231 results are valuable for instructing further antivirus activities.

## 232 **References**

- 233 1. Kupferschmidt K. Outbreak of virus from China declared global emergency.  
234 Science. 2020. doi: [doi:10.1126/science.abb1079](https://doi.org/10.1126/science.abb1079).

- 235 2. Shetty P. Preparation for a pandemic: influenza A H1N1. *Lancet Infect Dis.*  
236 2009;9(6):339-40. PubMed PMID: WOS:000266542300006.
- 237 3. Van Kerkhove MD, Asikainen T, Becker NG, Bjorge S, Desenclos JC, dos  
238 Santos T, et al. Studies needed to address public health challenges of the 2009  
239 H1N1 influenza pandemic: insights from modeling. *Plos Medicine.* 2010;7(6).  
240 doi: 10.1371/journal.pmed.1000275. PubMed PMID: WOS:000279400000008.
- 241 4. Kamigaki T, Oshitani H. Influenza pandemic preparedness and severity  
242 assessment of pandemic (H1N1) 2009 in South-east Asia. *Public Health.*  
243 2010;124(1):5-9. doi: 10.1016/j.puhe.2009.11.003. PubMed PMID:  
244 WOS:000274284400003.
- 245 5. Tarantola D, Amon J, Zwi A, Gruskin S, Gostin L. H1N1, public health security,  
246 bioethics, and human rights. *Lancet.* 2009;373(9681):2107-8. PubMed PMID:  
247 WOS:000267229700018.
- 248 6. Doyle A, Bonmarin I, Levy-Bruhl D, Le Strat Y, Desenclos JC. Influenza  
249 pandemic preparedness in France: modelling the impact of interventions. *J*  
250 *Epidemiol Community Health.* 2006;60(5):399-404. doi:  
251 10.1136/j.jech.2005.034082. PubMed PMID: ISI:000236792400007.
- 252 7. Read JM, Bridgen JR, Cummings DA, Ho A, Jewell CP. Novel coronavirus  
253 2019-nCoV: early estimation of epidemiological parameters and epidemic  
254 predictions. *medRxiv.* 2020.
- 255 8. Leung K, Wu J, Leung G. Nowcasting and forecasting the Wuhan 2019-nCoV  
256 outbreak. Preprint published by the School of Public Health of the University of  
257 Hong Kong. 2020.
- 258 9. Hethcote HW. The mathematics of infectious diseases. *Siam Review.*  
259 2000;42(4):599-653. PubMed PMID: WOS:000165673600003.
- 260 10. Fang L-Q, Wang L-P, de Vlas SJ, Liang S, Tong S-L, Li Y-L, et al. Distribution  
261 and risk factors of 2009 pandemic influenza A (H1N1) in mainland china. *Am J*  
262 *Epidemiol.* 2012;175(9):890-7. doi: 10.1093/aje/kwr411. PubMed PMID:  
263 WOS:000303653000006.
- 264 11. Zhao S, Lin Q, Ran J, Musa SS, Yang G, Wang W, et al. Preliminary estimation  
265 of the basic reproduction number of novel coronavirus (2019-nCoV) in China,  
266 from 2019 to 2020: A data-driven analysis in the early phase of the outbreak.  
267 *International Journal of Infectious Diseases.* 2020. doi:  
268 <https://doi.org/10.1016/j.ijid.2020.01.050>.
- 269 12. Liu T, Hu J, Kang M, Lin L, Zhong H, Xiao J, et al. Transmission dynamics of  
270 2019 novel coronavirus (2019-nCoV). *bioRxiv.* 2020.
- 271 13. Tang B, Wang X, Li Q, Bragazzi NL, Tang S, Xiao Y, et al. Estimation of the  
272 transmission risk of 2019-ncov and its implication for public health interventions.  
273 Available at SSRN 3525558. 2020.
- 274 14. Backer JA, Klinkenberg D, Wallinga J. The incubation period of 2019-nCoV  
275 infections among travellers from Wuhan, China. *medRxiv.* 2020.

- 276 15. WHO. Q&A on coronaviruses: How long is the incubation period? 2020 [2020-2-  
277 5]. Available from: <https://www.who.int/news-room/q-a-detail/q-a-coronaviruses>.  
278 16. He X. The local infection of novel coronavirus in Beijing Beijing Business  
279 Newspaper. 2020 Feb. 3, 2020.  
280 17. Rothe C, Schunk M, Sothmann P, Bretzel G, Froeschl G, Wallrauch C, et al.  
281 Transmission of 2019-nCoV Infection from an Asymptomatic Contact in  
282 Germany. New Engl J Med. 2020.  
283 18. Kupferschmidt K. Study claiming new coronavirus can be transmitted by people  
284 without symptoms was flawed. Science. 2020. doi: doi:10.1126/science.abb1524.