

1 **Evidence and characteristics of human-to-human transmission of SARS-CoV-2**

2 Min Kang, Ph.D., Jie Wu, Ph.D., Wenjun Ma, Ph.D., Jianfeng He, M.D., Jing Lu, Ph.D., Tao Liu,  
3 Ph.D., Baisheng Li, Ph.D., Shujiang Mei, M.D., Feng Ruan, M.D., Lifeng Lin, Ph.D., Lirong Zou,  
4 M.D., Changwen Ke, M.D., Haojie Zhong, M.D., Yingtao Zhang, M.D., Xuguang Chen, M.D.,  
5 Zhe Liu, Ph.D., Qi Zhu, M.D., Jianpeng Xiao, Ph.D., Jianxiang Yu, M.D., Jianxiong Hu, M.D.,  
6 Weilin Zeng, M.D., Xing Li, M.D., Yuhuang Liao, M.D., Xiujuan Tang, M.D., Songjian Xiao,  
7 M.D., Ying Wang, M.D., Yingchao Song, M.D., Xue Zhuang, M.D., Lijun Liang, M.D., Siqing  
8 Zeng M.D., Guanhao He, Ph.D., Peng Lin, M.D., Huihong Deng, M.D., Tie Song, M.P.H.

9

10 Guangdong Provincial Center for Disease Control and Prevention (M.K., J.W., J.H., B.L., L.L.,

11 L.Z., C.K., H.Z., Y.Z., X.C., Q.Z., J.Y., Y.L., Y.S., X.Z., L.L., P.L., H.D., T.S.)

12 Guangdong Provincial Institute of Public Health, Guangdong Provincial Center for Disease

13 Control and Prevention (W.M., J.L., T.L., Z.L., J.X., J.H., W.Z., X.L., G.H., S.Z., W.M.)

14 Shenzhen Center for Disease Control and Prevention (S.M., X.T.,)

15 Zhuhai Center for Disease Control and Prevention (F.R., S.X.)

16 Shenzhen Nanshan Center for Disease Control and Prevention (Y.W.)

17 Drs. M. Kang, J. Wu, W. Ma., J. He, J. Lu, T. Liu and B. Li contributed equally to this article.

18 Address reprint requests to Dr. Song at the Guangdong Provincial Center for Disease Control and

19 Prevention, Guangzhou 511430, China, or at [tsong@cdcp.org.cn](mailto:tsong@cdcp.org.cn)

20 **Abstract**

21 **Background**

22 On December 31, 2019, an outbreak of COVID-19 in humans was reported in Wuhan, and then  
23 spread fast to other provinces, China. We analyzed data from field investigations and genetic  
24 sequencing to describe the evidence and characteristics of human-to-human transmission in  
25 Guangdong Province.

26 **Methods**

27 A confirmed COVID-19 case was defined if a suspected case was verified with positive of  
28 SARS-CoV-2 in throat swabs, nasal swabs, bronchoalveolar lavage fluid (BALF), or endotracheal  
29 aspirates by real-time reverse transcriptase polymerase chain reaction assay (RT-PCR) or genetic  
30 sequencing. Field investigations were conducted for each confirmed case. Clinical and  
31 demographic data of confirmed cases were collected from medical records. Exposure and travel  
32 history were obtained by interview.

33 **Results**

34 A total of 1,151 confirmed cases were identified as of February 10, 2020 in Guangdong Province,  
35 China. Of them, 697 (60.1%) cases were from 234 cluster infections. Two hundred and fourteen  
36 (18.6%) were secondary cases, in which 144 cases were from family cluster infections. With the  
37 epidemic continuing, although familial cluster events were dominated, community cluster events  
38 increased with a nosocomial event. The whole genomes within the same family cluster infections  
39 were identical, and presented a few unique single nucleotide variants (SNVs) compared with  
40 SARS-CoV-2 identified on December 2019 in Wuhan.

41 **Conclusions**

42 We observed evident human-to-human transmissions of SARS-CoV-2 in Guangdong, China.  
43 Although most of them were from family cluster infections, community and nosocomial infections  
44 were increasing. Our findings indicate that human-to-human transmission risks are transferring  
45 from family to community in Guangdong Province.

## 46 **Introduction**

47 On December 31, 2019, Wuhan Municipal Health Commission reported 27 cases of pneumonia  
48 infection with unknown etiology in Wuhan, Hubei Province, China<sup>1,2</sup>. A novel coronavirus  
49 (SARS-CoV-2) was identified as the causative virus by Chinese authorities on January 7, 2020<sup>3</sup>.  
50 The common symptoms of the cases infected with SARS-CoV-2 include fatigue, fever, cough,  
51 shortness of breath and breathing difficulties. Severe infection can cause pneumonia, severe acute  
52 respiratory syndrome, kidney failure and even death<sup>4</sup>. As of February 11, 2020, 44,653 confirmed  
53 cases with 8,204 critical cases and 1,114 deaths were reported in 34 provinces, regions and  
54 municipal cities across China, with 33,366 in Hubei Province (19,558 cases in Wuhan), 1,219 in  
55 Guangdong Province, 1,135 in Henan Province, and 1,131 in Zhejiang Province. Additionally, 437  
56 cases were reported in other 24 countries. Almost all provinces and regions in China have initiated  
57 the highest level of public health emergency response.

58 As an emerging infectious disease, the characteristics of COVID-19 such as natural host and  
59 reservoir, incubation period, serial interval, and infectivity of human-to-human transmission  
60 remain unknown. We described evidence and characteristics of human-to-human transmission of  
61 SARS-CoV-2 in Guangdong Province, which will be valuable to decision making on prevention  
62 and control strategies for community spreading.

63 **Methods**

64 **Case definition and identification**

65 The suspected and confirmed human infections with SARS-CoV-2 were defined based on the  
66 Diagnosis and Treatment Scheme of SARS-CoV-2 released by the National Health Commission  
67 of China (Supplementary appendix)<sup>5</sup>.

68 After the outbreak of COVID-19 in Wuhan announced on December 31, 2019, enhanced  
69 surveillance was initiated in Guangdong Province to early recognize suspected infections,  
70 especially among those who had history of travelling to Wuhan within 14 days. Once a suspected  
71 case was diagnosed, the Center for Diseases Control and Prevention (CDC) at prefecture level  
72 would conduct an initial field investigation, and collect respiratory specimens. The respiratory  
73 specimens were shipped to Guangdong Provincial CDC (GDCDC) for SARS-CoV-2 test by  
74 RT-PCR or genetic sequencing.

75 **Epidemiological data Collection**

76 Demographic information, date of illness onset, and clinical outcomes of confirmed cases were  
77 collected from medical records. Through interviewing with confirmed cases or their relatives, we  
78 obtained exposure histories for each case during 14 days before the onset of illness including date,  
79 frequency, and patterns of exposures to wild animals.

80 **Metagenomic Sequencing**

81 Clinical samples including bronchoalveolar lavage fluid (BALF), endotracheal aspirates, throat  
82 swabs, and nasal swabs were collected for suspected cases. Total RNAs were extracted and  
83 RT-PCR was firstly performed according to the standard method provided by the China CDC.  
84 Next, the positive samples with cycle threshold value lower than 35 were used for metagenomic

85 sequencing to obtain the viral genomic sequences. Sample RNA was treated with TURBO DNase  
86 (Invitrogen, Cat. No. AM2239) and then purified by using Agencourt RNAClean XP beads  
87 (Beckman Cat. No. A63987). Libraries were prepared using the SMARTer Stranded Total  
88 RNA-Seq Kit v2 (Clontech, Cat. No. 634412) according to the manufacturer's protocol. Pair-end  
89 sequencing was performed on Miseq (Illumina, USA).

## 90 **Statistical and Sequences analyses**

91 We used descriptive statistics to summarize the epidemiological characteristics of confirmed cases.  
92 The sequencing data were quality controlled (QC) using fastp<sup>6</sup> and then mapped to the human  
93 genome (hg38) using Bowtie2<sup>7</sup> to remove human related RNA reads. De novo assembling was  
94 performed using Spades<sup>8</sup> and Megahit<sup>9</sup> for each dataset. Assembled contigs were annotated using  
95 blastn<sup>10</sup> using the complete nucleotide database. Twelve genome sequences generated in this study  
96 have been submitted to GISAID under the accession numbers EPI403932–EPI403937 and  
97 EPI406533–EPI406538. Maximum-likelihood (ML) trees of viral genome were estimated via  
98 IQ-Tree<sup>11</sup> by integrating closely related sequences from SARs and SARs-like viruses from public  
99 database. Two SARS-CoV-2 genomes from introduction cases in Thailand were also included and  
100 data analysis was approved by the corresponding submitter. SNV (single nucleotide variant) sites  
101 were found through SNV-sites<sup>12</sup>. Phylogenetic trees were annotated and visualized with ggtree<sup>13</sup>.

## 102 **Ethics Approval**

103 Data collection and analysis of cases and close contacts were determined by the National Health  
104 Commission of the People's Republic of China to be part of a continuing public health outbreak  
105 investigation and were thus considered exempt from institutional review board approval.

106

107 **Results**

108 **Description of the outbreak**

109 As of February 10, 2020, a total of 1,151 cases were identified in 20 of 21 cities in Guangdong  
110 Province, with the majority of cases in Shenzhen (n=368) and Guangzhou(n=313). Most cases  
111 (81.4%, 937/1151) were imported from other Provinces, especially from Hubei Province (70.1%,  
112 841/1,151). The peak of total cases was between January 23 and January 28, and so did for cluster  
113 cases and secondary cases (Figure 1). The average age of all cases was 44.5 years, and the  
114 percentage of males was 49.1% (565/1,151). Of total cases, 579 (50.3%) and 275 (23.9%) cases  
115 had history of travelling to Wuhan, and other cities in Hubei Provinces, respectively (Table 1). The  
116 average duration from onset of symptoms to diagnosis was  $5.6 \pm 3.2$  days.

117 Of total cases, 697 cases (60.1%) were from 234 cluster infection events with 537 cases in 195  
118 family cluster events and 160 cases in community clusters. Figure 2 shows that most cluster  
119 infection events are familial clusters during the epidemic, and community cluster events increased  
120 since the end of January. More importantly, on February 4, 1 nosocomial cluster event (3 cases)  
121 were reported in a hospital. Two hundred and fourteen (18.6%) secondary cases were identified,  
122 where 144 cases were from family cluster infections, 56 from other cluster infections, and 14 from  
123 community infections.

124 Here we extracted 13 family cluster infections as representatives of all family cluster cases to  
125 describe their characteristics, in which the epidemiological information of three family clusters  
126 were described in detail below. We also described two special events, one for community infection  
127 and another for nosocomial transmission.

128 **Characteristics of 13 family cluster infections**

129 The 13 family cluster infections were reported from Shenzhen (n=4), Zhuhai (n=3), Guangzhou  
130 (n=2), Foshan (n=2), Shaoguan (n=1) and Yangjiang (n=1) (Figure 3). The most common  
131 symptoms in 37 cases included fever, fatigue, and cough. Of 37 cases, 3 and 10 cases were  
132 critically and severely ill, respectively. Three cases in family cluster E had only mild respiratory  
133 symptoms such as mild cough, and 2 cases in family cluster M did not report any symptoms.  
134 Thirty-four cases had no exposure to wild animals within 14 days prior to the onset of illness.  
135 Nine cases were identified as secondary cases (Figure S1 and Table S1).

### 136 **Family cluster A**

137 This is the first family cluster infections identified in Guangdong Province. There were 5 cases in  
138 family cluster A. Case 1, Case 2, Case 3 and Case 4 stayed in Wuhan during December 29, 2019  
139 to January 4, 2020. Case 1 had symptoms of cough, fatigue, fever and diarrhea on January 3, 2020  
140 when they were in Wuhan. Case 2 (wife of Case 1) had fatigue and fever on January 4 after they  
141 returned Shenzhen. The couple visited two hospitals on January 6 and January 10 when they had  
142 fever ( $>38^{\circ}\text{C}$ ) and chest radiologic changes. Their endotracheal aspirates were collected and tested  
143 by Center for diseases control and prevention (CDC) on January 13, and were identified positive  
144 infections of SARS-CoV-2. Case 3 (son-in-law of Case 1) and Case 4 (grandson of Case 1) had  
145 fever, stomachache, diarrhea and muscular soreness on January 1 in Wuhan, and visited a hospital  
146 on January 11 in Shenzhen. Their blood and throat swab samples were also identified positive with  
147 SARS-CoV-2. These four cases had no history of exposure to wild animals. Case 5 (mother of  
148 Case 3) did not visit Wuhan within 14 days before the onset of symptoms, but lived with Case 3 in  
149 an apartment in Shenzhen. On January 8, she had low fever and breathless. On January 14, she  
150 visited a hospital and was isolated for treatment. Her blood and throat swab samples were



151 collected and tested by CDC on January 15, and identified positive of SARS-CoV-2.

152 **Family cluster B**

153 Three cases were identified in family cluster B in Zhuhai, including a father (Case 1), a mother  
154 (Case 2) and their daughter (Case 3). Case 1 and Case 2 resided in Wuhan, and visited on Case 3  
155 in Zhuhai on January 11. On their trip to Zhuhai, Case 1 began to have symptom of fatigue. On  
156 January 12, Case 1 developed dry cough, fatigue, headache, eye pain and muscular soreness, and  
157 Case 2 had symptoms of dry cough, fatigue, headache. On January 15, Case 1 and Case 2 visited a  
158 hospital. Their throat swabs were collected and tested by CDC on January 17, and laboratory  
159 diagnosis showed positive of SARS-CoV-2. Case 3 had symptoms of fever, occasional itching and  
160 dry cough on January 17 without history of visiting Wuhan within 14 days prior to the onset of  
161 symptoms. She visited a hospital on January 18, and SARS-CoV-2 was identified in throat swab  
162 samples by CDC.

163 **Family cluster D**

164 Family cluster D in Zhuhai had three cases. Case 1 stayed at Wuhan from January 8 to 17, and  
165 returned Zhuhai on January 17. On the trip, he had symptom of muscular soreness. Case 2 (wife of  
166 Case 1) lived with Case 1 in Zhuhai and had cough on January 20 without history of visiting  
167 Wuhan within 14 days before the onset. She visited a hospital with Case 1 on January 20, and  
168 were transferred to another hospital on January 21 for treatment and isolation. Their nasal and  
169 throat swabs were tested and identified with positive of SARS-CoV-2 on January 22. Case3  
170 (mother of Case 1) lived with Case1 and Case2 without history of visiting Wuhan in the past 14  
171 days. Her nasal and throat swabs were also identified with positive of SARS-CoV-2 on January 22,  
172 when she had low fever and fatigue, and was isolated on January 23.

173 **Community infection event**

174 Five cases were included in a community transmission event. Case 1 resided in Henan Province,  
175 China. On January 11, he and his wife (Case 2) came to Guangzhou to visit on their daughter  
176 (Case 3) by train which passed through Wuhan. Case 3 resided on the tenth floor of an apartment  
177 in Guangzhou. Case 1 and Case 3 had symptoms of fever on January 19, but they did not visit a  
178 hospital. Case 1 had symptoms of fever and dry cough on January 23. Case 1 and Case 2 visited a  
179 hospital on January 24 with Case 3, and their throat swabs were tested and identified with positive  
180 of SARS-CoV-2. They were isolated in a hospital for treatment. On January 16, Case 1 used the  
181 elevator in their apartment. Immediately after he got off the elevator, Case 4, who resided on the  
182 eleventh floor, entered the elevator, and touched herself mouth after she pressed the elevator  
183 button; she did not wear a mask. Case 4 did not meet Case 1, Case 2 and Case 3 before her onset  
184 of illness. On January 21, Case 4 had symptoms of fever, and visited a community hospital. On  
185 January 27, Case 4 and her husband (Case 5) visited another hospital, and their throat swabs were  
186 tested and identified with positive of SARS-CoV-2. Case 5 had no symptoms before he was  
187 diagnosed as COVID-19. Both Case 4 and Case 5 had no exposure to wild animals within 14 days  
188 prior to the onset of illness.

189 **Nosocomial infection event**

190 Three COVID-19 cases were included in a hospital-associated transmission event. Case 1, who  
191 resided in Guangzhou, and visited her relatives in Hubei Province from January 12 to January 22.  
192 She had symptoms of fatigue and leg pain on January 27, and visited a hospital on January 28. She  
193 had fever when she was hospitalized. On February 2, she had chest radiologic changes, and her  
194 throat swabs were tested and identified with positive of SARS-CoV-2. Case 2 was admitted to the

195 same room in the same hospital with Case 1 on December 31, 2019 because of backache. His  
196 white blood counts decreased on February 4, and he had severer cough on February 5 when he  
197 was identified with positive of SARS-CoV-2. Case 3 was a nurse who took care of Case 1 for  
198 several times, had symptoms of dry cough on February 4, and expectorated on February 5 when  
199 she was identified with positive of SARS-CoV-2. She had no exposure to wild animals within 14  
200 days prior to the onset of illness, but did not strictly protect herself by using protective products  
201 when she nursed Case 1.

## 202 **Phylogenetic analyses**

203 The phylogeny based on full-length of SARS-CoV-2 genomes (12 generated in this study) showed  
204 SARS-CoV-2 could be classified into SARS-like virus with the closest related strains as  
205 MG772934 and MG772933 which were collected from *Rhinolophus sinicus* in China on 2015 and  
206 2017, respectively. SARS viruses shared nearly 97.5% nucleotide similarity with closely related  
207 SARS-like viruses from bats. By contrast, SARS-CoV-2 had lower nucleotide similarity with  
208 related SARS-like viruses (87.4%-87.5%), and a long internal branch was observed between  
209 SARS-CoV-2 and related SARS-like viruses (Figure 4A).

210 To characterize the COVID-19 cases from family clusters and investigate potential genetic  
211 adaptation, we compared the twelve SARS-CoV-2 genome sequences generated between 14  
212 January 2020 and 23 January 2020 in this study and all published SARS-CoV-2<sup>14,15</sup>. Sequences  
213 from the three family cluster infections fell into three corresponding genetic clusters and could be  
214 separated from the sequences of sporadic infections (Figure 4B). The viral genome sequences  
215 from cases within a family cluster were exactly the same. To find whether there were any genetic  
216 changes following the illness progress, we sequenced SARS-CoV-2 viruses from case 1 of cluster

217 B on 17 January and 22 January, which was about 1 week and 2 weeks after the onset of illness,  
218 respectively. These two sequences were exactly the same suggesting the genetic stability of  
219 SARS-CoV-2 during the infection. Notably, the viral genome from family cluster A share three  
220 unique SNV sites which could not be found from other COVID-19 cases in public database.  
221 Among the three SNVs, one was predicted to cause amino acid changes (nonsynonymous  
222 variations) in ORF8 protein coding sequence led the amino acid change from Leu to Ser. One  
223 unique SNV site was identified in family cluster B and the change from C to T at position 21442  
224 within the spike protein coding sequence leading to amino acid change from His to Thr. Only one  
225 synonymous variation was identified in viral genome sequences from family cluster C. Due to the  
226 increasing epidemic activity, we also investigated whether there were any parallel mutations,  
227 which was regard as an indicator of potential genetic adaptation, could be identified in recently  
228 identified sporadic infection cases. Three SARS-CoV-2 genetic sequences from sporadic cases on  
229 22 January and 23 January showed there were no common SNV sites that could be identified in  
230 these cases and the SF201\_20/01/23 SARS-CoV-2 collected on 23 January had exactly the same  
231 genetic sequence with viral sequences collected at the beginning of the epidemic.  
232

233 **Discussion**

234 Eighteen years after the first emergence of SARS-CoV in Guangdong at the end of 2002<sup>16</sup>, a great  
235 challenge presents by the emergence of a new SARS-like coronavirus (SARS-COV-2). The early  
236 epidemiological data suggested that most cases were caused by spill-over infections from  
237 nonhuman sources which is still unknown<sup>17</sup>. In our study, we described the characteristics of  
238 human-to-human transmissions of SARS-COV-2 using epidemiological and genetic evidence.

239 As of February 10, increasing secondary cases were identified in Guangdong Province. In all 214  
240 secondary cases, none of them had history of residence or traveling to Wuhan within 14 days prior  
241 to onset of the illness. Our finding confirms the human-to-human transmission of SARS-COV-2  
242 reported in a familial cluster infection in a previous study<sup>18</sup>, and further suggests that it has strong  
243 transmissibility between humans. We further observed several cases with mild symptoms or no  
244 symptoms, which indicates that current monitoring measures such as fever testing may not work  
245 effectively to identify these asymptomatic cases. With the epidemic ongoing, we found two cases  
246 infected by sharing elevator with an index case in a building, and increasing cases in gathering  
247 activities or communities. These findings suggest that the human-to-human transmission risks are  
248 transferring from familial cluster infections to community outbreak. More importantly, we  
249 observed a nosocomial transmission event in Guangdong Province, which was also reported in a  
250 hospital in Wuhan, where 57 patients including 40 health-care workers were infected<sup>19</sup>. “Super  
251 spreading events” may occur in some specific circumstances such as hospitals if the epidemic was  
252 not control on time. As the extended Chinese Spring Festival holiday ends, millions of people will  
253 travel back to Guangdong Province from regions across China, which will cause more cases to be

254 imported to the Province. This will further increase the risk of community transmission. Therefore,  
255 we should persist in rigorous measures of cutting human-to-human transmission taken by the  
256 governments in communities especially in high risk places such as hospitals, factories and schools.

257 The evidence of strong human-to-human transmission raise much concern on 1) whether there are  
258 any genetic mutations associated with these cluster infections, and 2) are there any potential viral  
259 adaptations leading to the increasing epidemic activity? These questions, which are fundamental  
260 to the outbreak control, have not been adequately answered yet. In our study, the viruses  
261 sequenced from two secondary cases are the same with the viruses from corresponding index  
262 cases in their families, and these secondary cases had no history of traveling to Wuhan and no  
263 exposure to wild animals, which indicated that these viruses likely represent strains which can  
264 transmit from human to human. We also searched any genetic clues that might be associated with  
265 viral adaptation to a human transmission by comparing the viruses from family cluster infections  
266 with SARS-CoV-2 from the beginning of epidemic. Only three and one unique SNV sites are  
267 identified from viruses sequenced in family infection cluster A and B, respectively. These SNV  
268 sites are predicted to result in two synonymous change from Leu to Ser in Orf 8 and from His to  
269 Thr in spike protein, respectively. It is still unknown whether these amino acid changes provide or  
270 increase the virus capability of human transmission. However, the previous study from SARS  
271 suggests Orf8 is either noncoding or coding for a functionally unimportant putative protein<sup>20</sup>. As a  
272 result, few nonsynonymous changes detected between COVID-19 cases from secondary cases in  
273 Guangdong and early COVID-19 cases in Wuhan indicates SARS-CoV-2 could already transmit  
274 among humans at the beginning of the epidemic when it was still regarded as spill-over infections.

275 In this circumstance, more human to human transmissions should occur at the end of December  
276 2019 than we previously expected. Another reason that we believe SARS-CoV-2 may be already  
277 well established in humans since its first identification is that the SARS-CoV-2 we identified on  
278 January, 23, 2020 were exactly the same with viruses identified in Wuhan on 30 December 2019.  
279 Together with the SARS-CoV-2 genome sequences generated on 15 and 22 January, we did not  
280 find any clues of adaptations within the genome of SARS-CoV-2 accompany with the increasing  
281 epidemic. These data suggest the genetic stability of SARS-CoV-2 during the epidemic, which is a  
282 contrast to our previous findings on SARS viruses for which the strong positive selection on spike  
283 protein coding sequence and deletions in ORF8 gene are observed at the early phase of the  
284 outbreak<sup>20</sup>.

285 Our findings indicate that with the epidemic ongoing, prevention measures of containing  
286 person-to-person transmission in communities are urgently enhanced. Persistent surveillance for  
287 COVID-19 in communities, early detection and isolation of contacts of confirmed cases, and  
288 virologic analyses to assess genetic changes that might suggest increased transmissibility among  
289 humans are all critical to inform prevention and control efforts and assessing the global pandemic  
290 potential of COVID-19.

291

292 **Acknowledgements**

293 We thank all the medical and nursing staff who assisted in the care of patients; the members from  
294 health department and CDC in Guangdong Province for their contribution in data collection,  
295 COVID-19 control and prevention; Dr. Pilailuk Okada and his colleagues for sharing their  
296 sequence data. This work was supported by National Key Research and Development Program of  
297 China (2018YFA0606200, 2018YFA0606202), the Science and Technology Program of  
298 Guangdong Province (2018B020207006, 2019B020208005, 2019B111103001), Guangzhou  
299 Science and technology Plan Project (201804010383).

300



301 References

- 302 1. Wuhan Municipal Health Commission, Hubei Province, China. Wuhan Municipal Health  
303 Commission briefing on the pneumonia epidemic situation, 31 December 2019. 2019.  
304 (<http://wjw.wuhan.gov.cn/front/web/showDetail/2019123108989>.)
- 305 2. The 2019-nCoV Outbreak Joint Field Epidemiology Investigation Team, Li Q. An Outbreak  
306 of NCIP (2019-nCoV) Infection in China — Wuhan, Hubei Province. China CDC Weekly  
307 2020;2:79-80.
- 308 3. World Health Organization. WHO Statement Regarding Cluster of Pneumonia Cases in  
309 Wuhan, China. 2020. (<https://www.who.int/china/>.)
- 310 4. World Health Organization. Coronavirus. 2020.  
311 (<https://www.who.int/health-topics/coronavirus>.)
- 312 5. National Health Commission of the People's Republic of China. Prevention and Control  
313 Scheme of Novel Coronavirus. 2020.  
314 (<http://www.nhc.gov.cn/xcs/zhengcwj/202001/808bbf75e5ce415aa19f74c78ddc653f.shtml>.)
- 315 6. Chen S, Zhou Y, Chen Y, Gu J. Fastp: an ultra-fast all-in-one FASTQ preprocessor.  
316 Bioinformatics 2018;34:i884-i90.
- 317 7. Langmead B, Salzberg SL. Fast gapped-read alignment with Bowtie 2. Nat Methods  
318 2012;9:357-9.
- 319 8. Bankevich A, Nurk S, Antipov D, et al. SPAdes: a new genome assembly algorithm and its  
320 applications to single-cell sequencing. J Comput Biol 2012;19:455-77.
- 321 9. Li D, Liu CM, Luo R, Sadakane K, Lam TW. MEGAHIT: an ultra-fast single-node solution  
322 for large and complex metagenomics assembly via succinct de Bruijn graph. Bioinformatics

- 323 2015;31:1674-6.
- 324 10. Camacho C, Coulouris G, Avagyan V, et al. BLAST+: architecture and applications. BMC  
325 Bioinformatics 2009;10:421.
- 326 11. Nguyen L-T, Schmidt HA, von Haeseler A, Minh BQ. IQ-TREE: A Fast and Effective  
327 Stochastic Algorithm for Estimating Maximum-Likelihood Phylogenies. Mol Biol Evol  
328 2014;32:268-74.
- 329 12. Page AJ, Taylor B, Delaney AJ, et al. SNP-sites: rapid efficient extraction of SNPs from  
330 multi-FASTA alignments. Microb Genom 2016;2:e000056.
- 331 13. Yu G, Smith DK, Zhu H, Guan Y, Lam T-T, et al. GGTREE: an r package for visualization  
332 and annotation of phylogenetic trees with their covariates and other associated data. Methods  
333 Ecol Evol 2017;8:28–36.
- 334 14. Zhou P, Yang X-L, Wang X-G, et al. A pneumonia outbreak associated with a new  
335 coronavirus of probable bat origin. Nature 2020 (in press). Doi: 10.1038/s41586-020-2012-7 .
- 336 15. Zhu N, Zhang D, Wang W, et al. A Novel Coronavirus from Patients with Pneumonia in  
337 China, 2019. N Engl J Med 2020. Doi: 10.1056/NEJMoa2001017.
- 338 16. Drosten C, Günther S, Preiser W, et al. Identification of a novel coronavirus in patients with  
339 severe acute respiratory syndrome. N Engl J Med 2003;348:1967-76.
- 340 17. Wu F, Zhao S, Yu B, et al. A new coronavirus associated with human respiratory disease in  
341 China. Nature 2020 (in press). Doi: 10.1038/s41586-020-2008-3
- 342 18. Chan JF-W, Yuan S, Kok K-H, et al. A familial cluster of pneumonia associated with the 2019  
343 novel coronavirus indicating person-to-person transmission: a study of a family cluster. The  
344 Lancet 2020 (in press). Doi: 10.1016/S0140-6736(20)30154-9
- 345 19. Wang D, Hu B, Hu C, et al. Clinical characteristics of 138 hospitalized patients with 2019  
346 novel coronavirus–infected pneumonia in Wuhan, China. JAMA 2020 (in press). Doi:

347 10.1001/jama.2020.1585

348 20. He JF, Peng GW, Min J, et al. Molecular Evolution of the SARS Coronavirus, during the

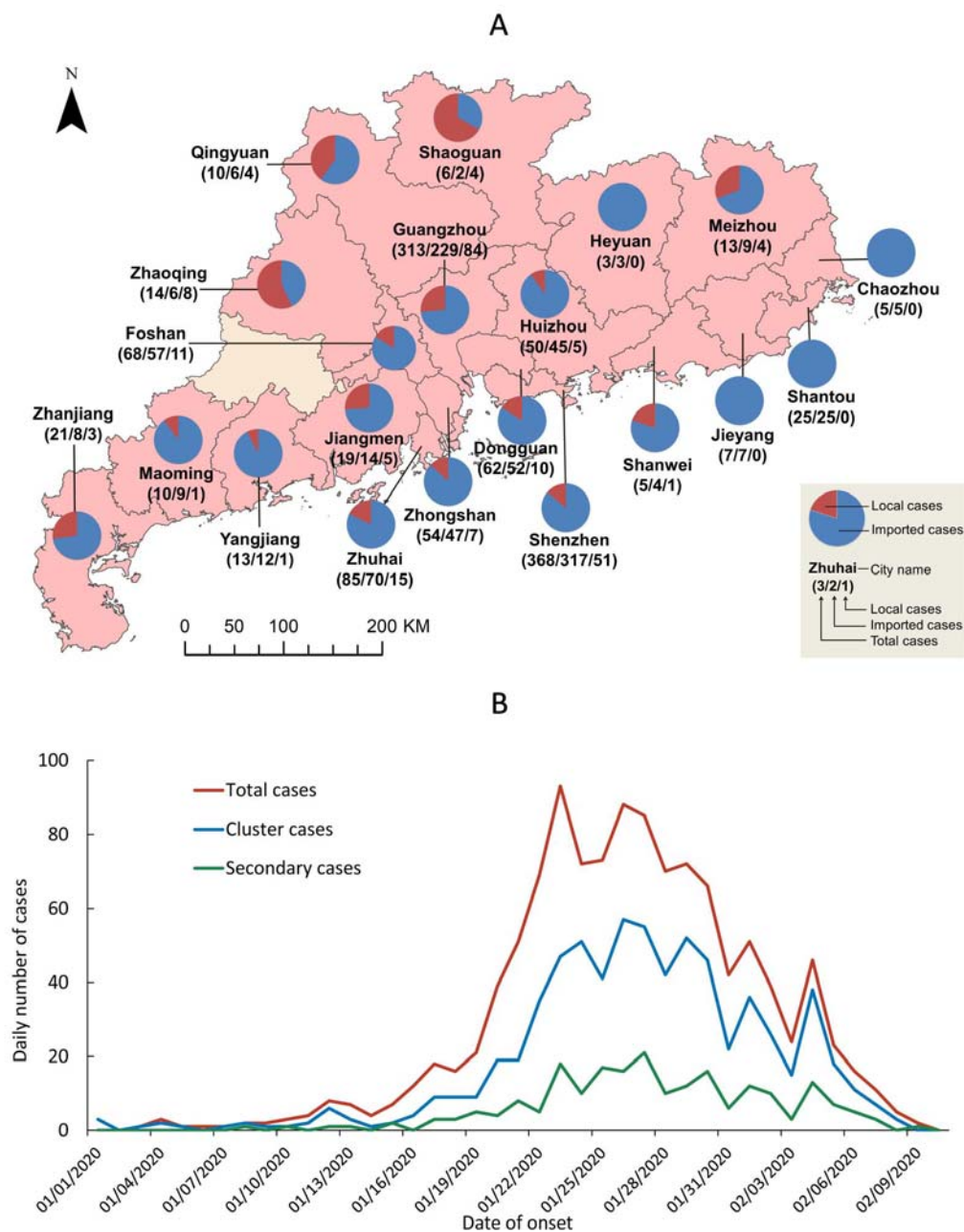
349 Course of the SARS Epidemic in China. *Science* 2004;303:1666-9.

350

351 Table 1. General characteristics of confirmed COVID-19 cases in Guangdong Province, China

	Total (n, %)	Cluster cases (n, %)	Non-cluster cases (n, %)	$\chi^2$	P
<b>Sex</b>					
Male	565 (49.1)	334 (47.9)	231 (50.9)	0.850	0.357
Female	586 (50.9)	363 (52.1)	223 (49.1)		
<b>Age (years)</b>					
<30	225 (19.5)	141 (20.2)	84 (18.5)	9.295	0.098
30~	258 (22.4)	151 (21.7)	107 (23.6)		
40~	176 (15.3)	99 (14.2)	77 (17)		
50~	216 (18.8)	121 (17.4)	95 (20.9)		
60~	209 (18.2)	138 (19.8)	71 (15.6)		
≥70	67 (5.8)	47 (6.7)	20 (4.4)		
<b>History of travelling to Wuhan and other cities in Hubei</b>					
Wuhan	579 (50.3)	320 (45.9)	259 (57)	33.66	<0.001
Other cities in Hubei	275 (23.9)	160 (23.0)	115 (25.3)		
No	294 (25.5)	217 (31.1)	77 (17.0)		
Unclear	3 (0.3)	0 (0.0)	3 (0.7)		
<b>Duration from onset to diagnosis (days)</b>					
<2	101 (8.8)	81 (11.6)	20 (4.4)	43.26	<0.001
2~	231 (20.1)	160 (23)	71 (15.6)		
4~	268 (23.3)	157 (22.5)	111 (24.4)		
6~	212 (18.4)	132 (18.9)	80 (17.6)		
≥8	290 (25.2)	140 (20.1)	150 (33)		
Unclear	49 (4.3)	27 (3.9)	22 (4.8)		
<b>Severity of illness</b>					
Mild	993 (86.3)	604 (86.7)	392 (86.3)	0.46	0.792
Serious	113 (9.8)	66 (9.5)	47 (10.4)		
Critical	42 (3.6)	27 (3.9)	15 (3.3)		

352

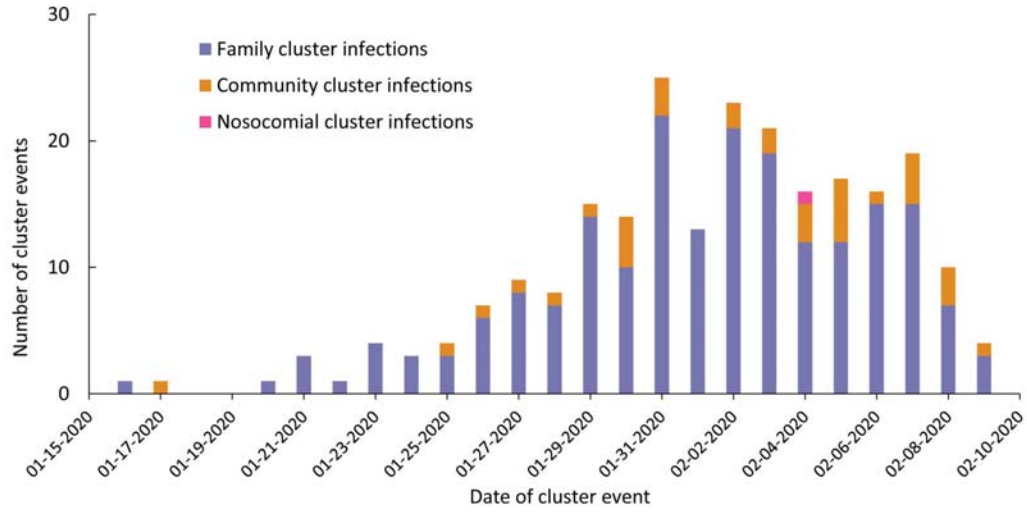


353

354 Figure 1. Spatio-temporal distribution of cases in Guangdong Province, China, by February 10,  
 355 2020

356 **Chart A:** The spatial distribution of all confirmed cases.

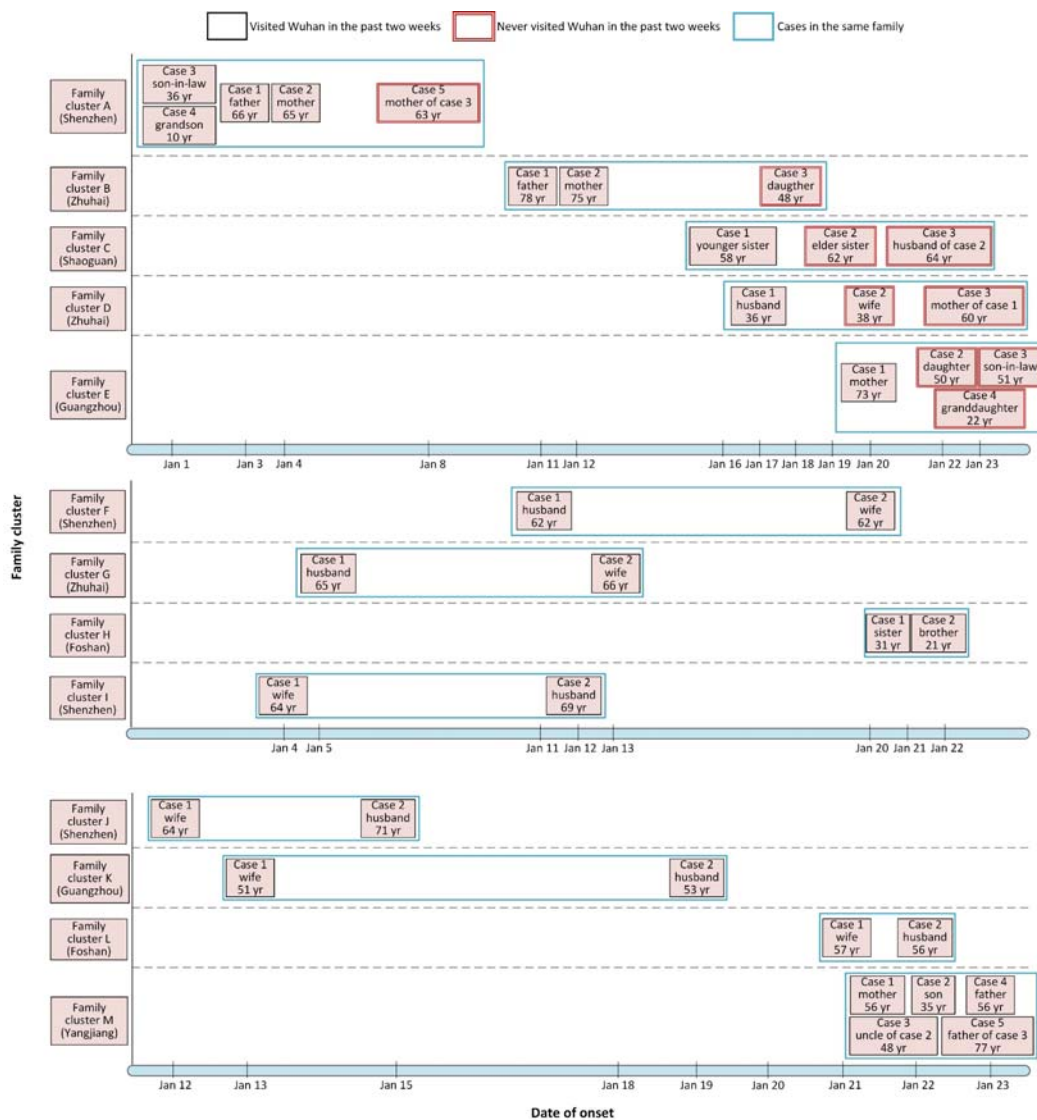
357 **Chart B:** The temporal distribution three types of cases, and number of cluster infections.



358

359

Figure 2. Time distribution of cluster infection events in Guangdong Province, by cluster types



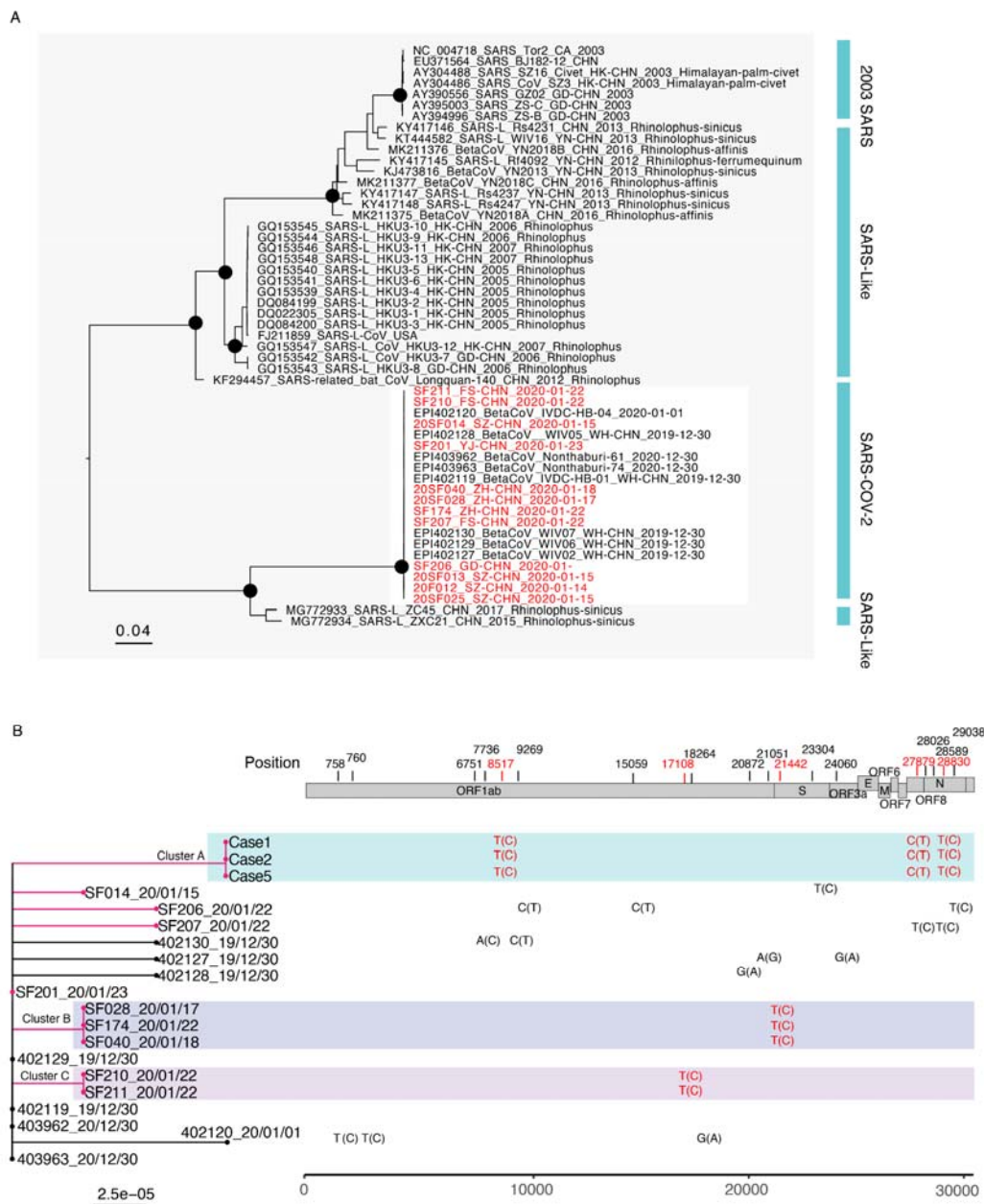
360

361

Figure 3. Onset date of 37 confirmed COVID-19 cases in 13 family cluster infections in

362

Guangdong Province



363

364

365 Figure 4. Phylogenetic analysis of the complete genome of SARS-CoV-2 identified in Guangdong  
 366 and closely related viral genome from the public database.

367 **Chart A:** Maximum-likelihood tree was constructed by including 12 new generated SARS-CoV-2  
 368 sequences in this study, 6 published SARS-CoV-2 sequences and sequences from closely related  
 369 SARS-like viruses. Two SARS-CoV-2 sequences from Thailand were integrated into the analysis  
 370 with the permission of the submitter. Black circles indicate bootstrap support >0.9 at the root node



371 of selected clade. The cluster of SARS-CoV-2 was highlighted with red box. The sequences  
372 generated in this study were highlighted in red.

373 **Chart B:** Phylogenetic relationship among SARS-CoV-2 and SNV (single nucleotide variant)  
374 sites were identified by aligning twenty complete genomes of SARS-CoV-2 collected between 30  
375 December, 2019 and 23 January, 2020 were found by the multiple genome sequences alignment.  
376 To ignore the sequences uncertainty at 5' and 3' terminal, the aligned sequences were started from  
377 position 266 to 29856 of SARS-CoV-2 genome (use the EPI402119 as the reference genome). The  
378 phylogeny branches of Guangdong SARS-CoV-2 sequences were colored in magenta and different  
379 family clusters were marked with different color boxes. Unique SNVs and their corresponding  
380 positions in reference viral genome identified in family cluster infections were shown on right of  
381 the phylogeny and the relative consensus sequences were shown in brackets. The nonsynonymous  
382 SNVs in cluster infections were marked with #.