

Preservation of cognition in hypertension-treated South Indian rural population

Radhika Rajkumar¹, Alex Divya Merciline², Suresh Kumar Muthukrishnan^{2,3}, Murali Subhashree¹, Muniswamy Duraimurugan¹, Velmurugan JanakiDevi¹, Manjula Datta[#] and Jamuna R. Subramaniam^{1*}

¹Center for Preclinical and Translational Medicine Research, Central Research Facility and

²Department of Clinical Psychology,

Sri Ramachandra Institute of Higher Education and Research, Chennai 600 116, India

[#]Kidney Help Trust, Chennai 600 018, India.

³Current Address: Department of Clinical Psychology, Composite Regional Center for Persons with Disabilities (NIEPMD), Government of India, Calicut 673 008, India

**Corresponding Author*

Dr. Jamuna R. Subramaniam

Associate Professor

Center for Preclinical and Translational Medicine Research

Central Research Facility

Sri Ramachandra Institute of Higher Education and Research

Chennai 600 116

India

Tel:914445928500; extn-8170

Email: jamuna17@sriramachandra.edu.in

Abstract

Change in diet, life style and increased life expectancy has led to the dramatic escalation in old age related complication like cognitive decline leading to dementia. Cardiovascular diseases (CVD) are huge risk factors for dementia, including Alzheimer disease (AD). Hypertension is very well known to cause cognitive impairment. Control of CVD could provide protection against dementia. Earlier, in the mouse model of AD, reserpine, an antihypertensive and antipsychotic drug could elicit improvement in the working memory in AD model mice and enhance the same in normal mice. Hence, Cognitive protection in the patients on chronic antihypertensive drug which contains reserpine was evaluated. Cognition in a cohort (in the South Indian rural population) of hypertensive patients (majority age group – 50-70 years) who have been chronically treated with a combinatorial drug, (adelphane/adelphane esidrex- Novartis, Switzerland) consisting of reserpine and hydrazine for years was compared with controls without hypertension. The cohorts were age, sex, socio-economic, education background matched. Cognition was scored using the Tamil version of: Addenbrooke’s Cognitive Examination-III (T-ACEIII) and Tamil-Montreal Cognitive Assessment (T-MoCA) scales. The composite T-ACEIII score of control and treated groups were 53.6 and 53.2, respectively. T-MoCA scores (Control- 15.1 and Treated- 14.7) did not show much alteration. Further, the mean scores of the control and treated groups’ individual components of cognition in ACE, namely, Attention, Memory, Fluency, Language and visuospatial – cognitive skills also did not reveal significant difference. Thus, controlling blood pressure or hypertension with chronic antihypertensive medication like adelphane/adelphane esidrex (reserpine containing drugs) has retained normal cognition in both genders.

Key words; cognition; hypertension; ACE-III; attention; reserpine; MOCA; Tamil;

Introduction

The world is aging at an alarming rate¹. The increase in life expectancy has led to a world enriched with greying population which will increase from 12% to 22% in the next two-three decades². In 2050, 90% of the people above 60 years will be living in the developing countries. Non-communicable chronic diseases like diabetes², hypertension³ and neurodegenerative diseases are directly proportional to aging⁴. Cognition declines with age and the neurodegenerative disease, Alzheimer disease (AD)-loss of memory (dementia) has become a huge geriatric burden with 1 in 10 above 65 years developing the disease. Further, two thirds of the AD patients are women⁵. There is hardly any treatment for AD. Acetylcholine inhibitors, donepil^{6,7} and glutamate's NMDA receptor partial antagonist, memantine^{6,8} are the only drugs available. They are of very limited use and given after the onset of the disease and mostly palliative in nature. The molecular changes that lead to AD development starts more than a decade ahead of the disease manifestation⁹. Hence, the etiology needs to be identified and preventive strategy be initiated from mid-life to delay/protect against cognitive decline.

Some of the risk factors for AD are cardiovascular diseases¹⁰ and diabetes. Of these, hypertension seems to contribute to cognitive decline significantly. More importantly, one third of the world population in general and 66% above age 65 suffer from hypertension^{11,12}. One of the major reasons for cognitive decline is impairment of blood circulation to the brain, which is known to cause both vascular dementia and Alzheimer disease^{13,14}. The prevalence of hypertension in low and middle income countries including India is 40%¹⁵. Therefore diagnosis of hypertension and its treatment is essential. Drugs targeting different pathways¹⁶, namely, calcium channel blockade (nitrendipine)^{16,17}, angiotensin-renin system's angiotensin converting enzyme inhibitors- enalapril, and or angiotensin receptor II (ARII) inhibition, with or without a diuretic (hydrazine/ hydrochlorothiazide), could control hypertension¹⁵. The longer the time on antihypertensive, lesser is the chance of dementia¹⁸. Interestingly, various large cohort meta-analysis has revealed, that calcium channel blockers and ARII inhibitors may protect better against cognitive decline¹⁶. Another trial which included the biogenic amine downregulator, reserpine, was inconclusive due to several control group switching to treatment¹⁶.

Independently, in a *C. elegans* screen, reserpine was found to extend lifespan¹⁹, albeit, through modulation of acetylcholine release²⁰, partially through the action of G_o coupled dopamine receptor, *dop-3*²¹. More importantly, reserpine could protect against the Alzheimer disease causing Amyloid beta toxicity induced paralysis in *C. elegans*²² and improved working memory in the 5XFAD Alzheimer disease model mice^{23,24} suggesting reserpine as a potential drug to provide cognitive protection.

Starting from 1995, Kidney Help Trust, a Community Health initiative, had screened the entire population of ~56 villages and hamlets in an around Chennai, a rural South Indian population in the state of Tamil Nadu, India for both diabetes and hypertension²⁵⁻²⁹. Hypertension was treated with Adelphane which consists of reserpine (0.1mg) and a diuretic -hydralazine (10mg)²⁵⁻³⁰ or Adelphane esirdex²⁵⁻²⁹. As hypertension is relentless and needs long-term medication, these patients had to remain on reserpine for several years.

Reserpine²⁵⁻²⁹ was the antihypertensive^{31,32} drug of choice in this community health initiative and for the Chinese rural population³³. Reserpine is a historical entity, of plant origin, specifically, an alkaloid purified from the roots of *Raulwolfia serpentina* (common name - snake root; colloquial name -sarpagandha). It was used in Ancient ayurvedic medicine for the treatment of hypertension, insomnia, as tranquilizer, snake bites and insanity³⁴⁻³⁶. Later, reserpine was shown to provide protection in hypertension^{31,37} and psychosis along with chlorpromazine^{32,38, 39}. Currently, reserpine is an FDA approved drug for second line treatment of hypertension and treatment resistant psychosis, though availability is a challenge. In rural China, more than 44% use antihypertensive herbal compounds preparation containing reserpine³³. Reserpine acts through downregulation of biogenic amines (dopamine, serotonin, epinephrine and norepinephrine) neurotransmitters at the synapse. It inhibits these biogenic amines loading into synaptic vesicles by irreversible inhibition of vesicular monoamine transporter (VMAT)⁴⁰⁻⁴². Reserpine was a very effective and inexpensive drug for a huge population in low and middle income countries.

Identification of whether control of hypertension with reserpine or adelphane/adelphane hydrilex will provide the added benefit of cognitive protection. This will be extremely beneficial to the aging economically weaker community to have a dignified life and protect the society against huge social and financial liability. Given the importance, we address the cognitive benefits of hypertension treatment with reserpine as a combinatorial drug with a diuretic (due to non-availability reserpine as a single drug) in the South Indian context, as we found reserpine's ability to enhance cognition in the 5XFAD Alzheimer disease mouse model and normal mice²².

Materials and Methods

Study Design

A retrospective cross sectional observational study was carried out about the cognitive abilities of the population with hypertension and treatment in comparison with matched normal volunteers.

Subjects

Age, sex, education and socioeconomic background matched control (not hypertensive) and hypertensive patients on Adelphane/ Adelphane Esidrex from Novartis, Basel, Switzerland for several years were recruited. The International Standard Sri Ramachandra University Institute Ethics Committee clearance was obtained before the study was initiated. Further, patients informed consent was acquired. Both the group cohorts were from the same locality. The control group (N= 107) and the Adelphane (reserpine) treated group (N=106). Most of the population had basic education of being able to read and write tamil at the basal level at least words. The highest education was passing elementary or high school which was very few. This was a blinded cross-sectional study. Further, all methods were carried in accordance with the relevant guidelines.

Period

The field visits and data collection took one year. Further, data consolidation and analysis took another six months. On the whole, it was started in May 2015 and ended in December 2016.

Hypertension treatment

The treatment details are already reported in Rajkumar *et al.*, (2018)⁴³. Briefly, The Kidney Help Trust of Chennai provided reserpine in the form of Adelphane (0.1 mg reserpine and 10 mg of hydralazine)/Adelphane Esidrex (has 10 mg of hydrochlorothiazide added to Adelphane) of Novartis, Switzerland. The hypertension patients, South Indian population in 56 villages and hamlets around Chennai, Tamil Nadu, India were treated as detailed above from 1995 onwards. The dosage varied from 1 tablet to 4 tablets for a day according to the patient status. Management of hypertension with this drug was very effective. Fixed specific dose worked well for a very long period (in years) in the patients. In addition, it was well tolerated.

Cognition evaluation

Addenbrooke's cognitive Examination (ACE-III) screening: Permission was obtained to use ACE-III before the scale was tested on the cohorts. The worldwide well accepted Addenbrooke's cognitive examination revised version –III^{44, 45} was adapted to the Indian local language – Tamil (one of the Ancient living language) of the state Tamil Nadu and administered to the control and patients in a blinded manner. The individual cognitive domains and the total ACE-III-T scores were obtained.

MoCA Screening: The freely available Montreal cognitive assessment scale (MoCA)^{45,46} developed in Canada in 1996 translated in the native local language, Tamil, gauges the individual cognitive domains like language, visuospatial abilities, memory and recall and abstract thinking. This gives a consolidated total score (Maximum= 30) for control and the patients cohorts. This is referred to as MoCA-T.

Statistical analysis

Statistical analyses of the scores were done using SigmaPlot 10.0. Statistical significance was determined by Students t-test and Mann-Whitney Rank Sum Test.

Results

Control group (107) and patients receiving adelphane/adelphane esirdex (106) were objectively screened for Cognitive abilities using the universally accepted and adapted ACE-III⁴⁵ and MoCA⁴⁵ scales. More importantly, these scales were adapted to the local language, Tamil, the mother tongue of all the participants. The results obtained were analyzed for individual cognitive domains and the consolidated total scores.

Cognitive protection by antihypertensive drug adelphane/adelphane esirdex

The consolidated ACE-III-T (Fig. 1; Table 1) and MoCA-T (Fig.1B) scores of control and treated groups independent of age and gender did not show significant difference. The mean values for ACE-III- T for control and treated are 53.6 and 53.2, respectively, for a total score of 100. For MoCA-T, the mean consolidated scores are: Control- 15.1 and Treated- 14.7 out of a total score of 30. Lack of significant difference between the control and treated group suggests that anti-hypertensive treatment has retained the cognition in the hypertension patients on adelphane/adelphane esirdex.

Protection in different cognitive domains

Next, we determined the mean scores in the individual cognitive domains, namely, attention, memory, fluency, visual-spatial and language obtained with ACE-III-T. We find no significant difference between the control and treated group (Fig. 2; Table 2). Antihypertensive treatment is able to protect individual cognitive domains as well.

Cognitive protection across various ages

Further, we analyzed the individual cognitive domains scores segregated based on age (Fig. 3&4; Table 2). Though there is a marginal decrease in cognitive scores with age, adelphane/adelphane esirdex treatment is able to maintain it at the same levels as the controls when compared within the specific age group.

Cognition in males and females

When the cognitive ability protection by antihypertensive treatment was measured in both the genders, reserpine works effectively in both males and females (Fig.5; Table 3). Here again, a significant difference was not noticed for either gender compared to the control.

Cognitive comparison between males and females

An independent observation shows slightly less mean cognitive score as per ACE-III-T among women (51%) than men (64%)(Table 3). Further, strangely, there was a significant difference in cognition between genders with males mildly better than females in the Language, Fluency and visuo-spatial skills and overall ACEIII-T (Fig. 5; Table 3) (13% better).

Thus, the reserpine containing combinatorial antihypertensive drug, Adelphane/adelphane esidrex was able to protect cognition across different cognitive domains. Hence, antihypertensive drug treatment is one modality for preservation of cognition in the geriatric population when started from middle age onwards.

Discussion

Hypertension is one the most prevalent (30-40%) and silent killer, non-communicable diseases which can occur at any age, more so in middle age^{16, 47}. More importantly, middle age hypertension shows very strong association with later age dementia^{16,48}. Hence, hypertension alone and in combination with diabetes and dementia with huge morbidity and mortality rates, and the social, financial and economic burden on the world community, needs to be contained in all its totality. Towards this, Kidney Help Trust in Chennai, Tamil Nadu, India in 1995 started a major initiative to screen the rural population for diabetes and hypertension and providing treatment for

persons with these diseases²⁵⁻²⁹. The antihypertensive drug used is Adelphane/adelphane esidrex. This was the least expensive hypertension medication and also the most efficient, effective at the same dosage for years and well tolerated, given that antihypertensive drugs need to be taken lifelong and cost was a major factor. Hence, reserpine was the drug of choice for the poor²⁵⁻²⁹. Sadly, midway through the study due to non-availability of adelphane/adelphane esidrex, the patients were switched to arkamin.

As there is a correlation between hypertension and cognitive decline, the cognition of the hypertension patients on the antihypertensive drug adelphane/adelphane esidrex in comparison with normal age, sex and socioeconomic background matched subjects was evaluated. The mean blood pressure was reduced from 149/88 to 143/83 upon chronic antihypertensive treatment⁴³. Screening of various cognitive domains like memory, language, fluency, attention and visuospatial skills using the worldwide accepted ACE-III scale translated in the local language Tamil (ACE-III-T) revealed preservation of cognition across all the domains in all the age groups in both genders (Fig. 1-5, Tables 1-3). The ACE-III-T mean total score was 53.6(control) and 53.2(treated) for 100. Similarly, no difference was noticed in the screening with MOCA-T 15.1 control and 14.7 (treated) for 30. Cognition was fully preserved in all the age groups in both the genders when compared with the control (Fig. 3 & 4, Fig. 5; Table 2 & 3).

One of the major challenge was administration of the cognitive scales in the rural population where most of them had only basic education⁴⁹. To the best of our knowledge, such cognitive screening has not been carried out in the South Indian rural population. Further, there seems to be a correlation between education and the cognitive score when such a study was carried out using ACE-III translated in another Indian language, Malayalam⁵⁰. In addition to the total scores, the individual domains were also screened. In this again, no difference was noticed between control and treated groups in both genders. But, further analysis of ACE-III- T scores revealed information like, i) with age cognition slightly declines (Fig. 4 A-D, Table 2) in all the domains. ii) Males have slightly higher ACE-III-T score than females (Fig.5; Table 3). One of the reason could be lack of intellectual pursuits in the women of the age group that was tested. As told by one of the woman participants (for the cognitive domains), she was not pursuing such activities after starting a family. In addition, as Alzheimer disease is more common in women, probably, more cognitive stimulation is needed. This needs to be seriously addressed.

Contrary to the negative publicity of reserpine causing suicidal tendency, reserpine is shown to work well as an antihypertensive drug in patients³² and clear data for this negative effect also is lacking⁵¹. Earlier for psychosis the dosage was in mgs while here only 0.1 mg to 0.4 mg is given. In the same population, depression screening by us has shown no increased incidence upon taking adelphane/adelphane esidrex⁴³. Thus it is a safe drug, but now discontinued by Novartis. Since Novartis was supplying it for a long time, they may have their own reasons for discontinuing.

As it was a blinded study, 50% of control and adelphane/adelphane esidrex treated hypertensive patients were retraced. Of this, 80% of the patients were on this drug for more than two years and 33% for more than 10 years. A small population of 1.4% was on reserpine for more than 18 years. The blood pressure of control subjects was normal while the Adelphane/Adelphane esidrex treated patients it had been brought down by ~10mm Hg in both diastolic and systolic blood pressure⁴³. In contrast to the implicated negative effects, reserpine had been safe for chronic usage as an antihypertensive. To iterate this, 44% of rural Chinese population use reserpine containing herbal compound preparation³⁵ for hypertension. In addition, reserpine had been an effective antihypertensive in older patients⁵².

In the current scenario of the world aging at a rapid rate, and the increase in mean lifespan, cognitive decline and Alzheimer disease in the geriatric population, reserpine could preserve cognition in the poor patients of age 50 and 70 of rural South Indian setting (Fig. 1 and Fig 2). The novelty of this study is the drug reserpine identified through the *Caenorhabditis elegans* lifespan extending¹⁹ and Alzheimer disease(AD) causing amyloid beta toxicity²² protecting effect, could provide cognitive enhancement in normal and 5XFAD transgenic AD model mice²³ and reduce A β aggregates in another AD model mice Tg2576²⁴ can preserve cognition in hypertensive patients (Fig.1). Given that reserpine is of ancient Ayurvedic medicine origin, the wisdom of the ancestors is praiseworthy.

Acknowledgement:

The authors are grateful to Dr. M.K. Mani, Managing Trustee, Kidney Help Trust Chennai for the encouragement, support and guidance and the employees of Kidney Help Trust who aided in the subjects recruitment and identification. The authors thank Prof. Sakthisekaran, Department of Community Medicine, Sri Ramachandra Institute of Higher Education and Research, for the discussions and suggestions. The authors have no conflict of interest.

Note: As =Adelphane/Adelpane esidrex was not available, the hypertensive patients were switched to Arkamin midway through the study.

Figure Legend

Fig. 1 Chronic Antihypertensive treatment maintains cognition

A. The total ACEIII-T score of normal (control) and patients on antihypertensive (PAH).
B. The total MOCA-T score of the normal and PAH.

Fig. 2 Chronic antihypertensive regimen retains normalcy in various cognitive domains

The cognitive domains measured in ACE-III-T as (x- axis) Attention, Memory, fluency, language and visuo-spatial skills scores (Y-axis) remains normal in PAH.

Fig. 3 Age distribution of the study cohorts

Control – Black line: PAH- line with dashes

Fig. 4 Different cognitive domains are normal across various ages upon antihypertensive treatment

Comparison between normal and PAH of different age groups A. 30-50; B. 51-60; C. 61-70; D. 71-80. Y- axis –scores; X- axis – control and treated – specific cognitive domains and total ACE-III-T

Fig. 5 Chronic antihypertensive treatment protects in both genders

Comparison of the cognitive domains between normal males and females with the respective PAH. Y- axis – Scores : X axis- Drug treatment and gender. A. Attention; B. Memory; C. Fluency; D. Language; E. Visuo-spatial skill ; F. Total score in ACE-III-T.

References

1. <https://www.who.int/news-room/fact-sheets/detail/ageing-and-health> (2018).
2. Kodl, C.T., Seaquist, E.R. Cognitive dysfunction and diabetes mellitus. *Endocr Rev* **29**, 494-511, <https://doi.org/10.1210/er.2007-0034>, (2008).
3. Whitmer, R.A., Gunderson, E.P., Quesenberry, C.P. Jr, Zhou, J., Yaffe, K. Body mass index in midlife and risk of Alzheimer disease and vascular dementia. *Curr Alzheimer Res* **4**, 103-109, (2007) <https://doi.org/10.2174/156720507780362047> (2007).
4. Yalcin, G., Yalcin, A. Metabolic Syndrome and Neurodegenerative Diseases. *J Geriatr Med Gerontol* **4**, 042. <https://doi.org/10.23937/2469-5858/1510042> (2018).
5. Chêne, G., Beiser, A., Au, R., Preis, S.R., Wolf, P.A., Dufouil, C. and Seshadri, S. Gender and incidence of dementia in the Framingham Heart Study from mid-adult life. *Alzheimer's & Dementia* **11**,310-320 <https://doi.org/10.1016/j.jalz.2013.10.005> (2015).
6. Casey, D.A., Antimisiaris, D. and O'Brien, J. Drugs for Alzheimer's Disease: Are They Effective? *Pharmacy & Therapeutics* **35**(4), 208–211 [PMCID: PMC2873716](https://pubmed.ncbi.nlm.nih.gov/21111111/) (2010).
7. <https://www.alz.org/alzheimers-dementia/treatments/medications-for-memory> (2019).

8. Mount, C. and Downton, C. "Alzheimer disease: progress or profit?" *Nat. Med.* **12** (7), 780–4 <https://doi.org/10.1038/nm0706-780> (2006).
9. Alzheimer disease facts and figures. Alzheimer Association 17, <https://www.alz.org/alzheimers-dementia/facts-figures?> <https://www.alz.org/alzheimers-dementia/facts-figures?> (2018).
10. Barnes, D.E., Yaffe, K. The projected effect of risk factor reduction on Alzheimer's disease prevalence. *Lancet Neurol* **10**,819–828, [https://doi.org/10.1016/S1474-4422\(11\)70072-2](https://doi.org/10.1016/S1474-4422(11)70072-2) (2011).
11. Kearney, P.M., Whelton, M., Reynolds, K., Muntner, P., Whelton, P.K., He, J. Global burden of hypertension: analysis of worldwide data. *Lancet* **365**, 217-23, [https://doi.org/10.1016/S0140-6736\(05\)17741-1](https://doi.org/10.1016/S0140-6736(05)17741-1) (2005).
12. Mills, K.T., Bundy, J.D., Kelly, T.N., Reed, J.E., Kearney, P.M., Reynolds, K., Chen, J., He, J. Global Disparities of Hypertension Prevalence and Control: A Systematic Analysis of Population-Based Studies From 90 Countries. *Circulation* **9**, 441-50, <https://doi.org/10.1161/CIRCULATIONAHA.115.018912> (2016).
13. Kennelly, S.P., Lawlor, B.A., Kenny, R.A. Blood pressure and the risk for dementia: a double edged sword. *Ageing Res Rev* **8**, 61–70, <https://doi.org/10.1016/j.arr.2008.11.001> (2009) .
14. Shah, N.S., Vidal, J.S., Masaki, K., Petrovitch, H., Ross, G.W., Tilley, C. *et al.* Midlife blood pressure, plasma beta-amyloid, and the risk for Alzheimer disease: the Honolulu Asia aging study. *Hypertension* **59**, 780–786, <https://doi.org/10.1161/HYPERTENSIONAHA.111.178962> (2012).
15. World Health Organization. A Global brief on Hypertension. Silent killer, global public health crisis. 2013 WHO Report, https://www.who.int/cardiovascular_diseases/publications/global_brief_hypertension/en/ (2013).
16. Lulita, M.F. and Girouard, H. Treating Hypertension to Prevent Cognitive Decline and Dementia: Re-Opening the Debate. *Adv Exp Med Biol.* **956**, 447-473, https://doi.org/10.1007/5584_2016_9 (2016).
17. Lopez-Arrieta, J.M. and Birks, J. Nimodipine for primary degenerative, mixed and vascular dementia. *Cochrane Database Syst Rev* **3**,CD000147, <https://doi.org/10.1002/14651858.CD000147> (2002).
18. Peila, R., White, L.R., Masaki, K., Petrovitch, H., Launer, L.J. Reducing the risk of dementia: efficacy of long-term treatment of hypertension. *Stroke* **37**:1165–1170, <https://doi.org/10.1161/01.STR.0000217653.01615.93> (2006).
19. Srivastava, D., Arya, U., SoundarRajan, T., Dwivedi, H., Kumar, S. and Subramaniam, J.R. Reserpine can confer lifespan extension in *C.elegans*. *Biogerontology* **9**(5), 309-16, <https://doi.org/10.1007/s10522-008-9139-5> (2006).
20. Saharia, K., Arya, U., Kumar, R., Sahu, R., Das, C.K., Gupta, K., Dwivedi, H. and Subramaniam, J.R. Reserpine Modulates Neurotransmitter Release To extend lifespan and alleviate Age-Dependent A β Proteotoxicity. *Experimental Gerontology* **47**, 188-97, <https://doi.org/10.1016/j.exger.2011.12.006> (2012).
21. Saharia, K., Kumar, R., Gupta, K., Mishra, S. and Subramaniam, J.R. A novel way of amelioration of Abeta induced toxicity in *Caenorhabditis elegans*. *Annals of Neuroscience* **23**,149-154, <https://doi.org/10.1159/000449180> (2016).
22. Arya, U., Dwivedi, H.,Subramaniam, J.R. Reserpine ameliorates Abeta toxicity in the Alzheimer's disease model in *C. elegans*. *Exp Gerontol* **44**, 462-466, <https://doi.org/10.1016/j.exger.2009.02.010> (2009).
23. Vasantharaja, R., Kumar, A., Kumar, A. and Subramaniam, J.R. Reserpine Improves Working Memory. *Journal of Behavioral and Brain Science* **6**, 107-112, <https://doi.org/10.4236/jbbs.2016.63012> (2016).
24. Go, J., Cho, S.I., Kim, J.I., Lee, Y.J., Kwak, M.H., Koh, E.K., Song, S.H., Sung, J.E. and Hwang, D.Y. Effect of Reserpine on the Behavioral Defects, A β -42 Deposition and NGF Metabolism in Tg2576 Transgenic Mouse Model for Alzheimer's Disease. *J Life Sci.* **23**, 812-82429 <https://doi.org/10.5352/JLS.2013.23.6.812> (2013).
25. Mani, M.K. Prevention of chronic renal failure at the community level. *Kidney Int Suppl.* S86-S89, <https://doi.org/10.1046/j.1523-1755.63.s83.17.x> (2003).

26. Mani, M.K. Experience with a program for prevention of chronic renal failure in India. *Kidney Int Suppl.* S75-S78, <https://doi.org/10.1111/j.1523-1755.2005.09419.x> (2005).
27. Mani, M.K. Nephrologists san frontierers: Preventing chronic kidney disease on a shoestring. *Kidney International* 70:821-823, <https://doi.org/10.1038/sj.ki.5001793> (2006).
28. Mani, M.K. A glimmer of hope for prevention. *National Medical Journal of India* 23,109-110, PMID:20925214 (2010).
29. Datta, M. and Mani, M.K. Community based approach to prevention of chronic kidney disease: the Chennai experience. in:el Nahas M (ed). *Kidney Diseases in the Developing World and Ethnic Minorities*. Taylor and Francis: New York. 395-409, (2005).
30. <https://www.drugs.com/pro/reserpine.html>
31. Vakil, R.J. A Clinical Trial of *Rauwolfia serpentina* in Essential Hypertension. *Bri Heart J* 11, 350-355, http://repository.ias.ac.in/67930/1/18_PUB.pdf (1949).
32. Lopez-Munoz, F., Bhatara, V.S., Alamo, C., Cuenca, E. Historical approach to reserpine discovery and its introduction in psychiatry. *Actas Esp. Psiquiatr.* 32, 387–395 PMID: 15529229(2004).
33. Zou, G., Zhang, Z., Walley, J., Gong, W., Yu, Y., Hu, R., *et al.* (2015) Use of Medications and Lifestyles of Hypertensive Patients with High Risk of Cardiovascular Disease in Rural China. *PLoS ONE* 10(5), e0124484. <https://doi.org/10.1371/journal.pone.0124484>.
34. Shastry, J.L.N. Illustrated Dravyaguna Vijnana, Vol. II, Subtitled: Study of the Essential Medicinal Plants in Ayurveda. ISBN 9788176370936. Publisher: Chaukhamba Orientalia (2015).
35. Lele, R. Beyond Reverse Pharmacology: Mechanism-Based Screening of Ayurvedic Drugs. *Journal of Ayurveda and Integrative Medicine* 1, 257-265, <https://doi.org/10.4103/0975-9476.74435> (2010).
36. <http://easyayurveda.com/2013/10/18/sarpagandha-rauwolfia-serpentina-benefits-side-effects-ayurveda-details/>
37. Shamon, S.D. and Perez, M.I. Blood pressure-lowering efficacy of reserpine for primary hypertension. *Cochrane Database Syst Rev.* 12:CD007655. [https://doi.org/10.1002/14651858.CD007655.pub3\(2016\)](https://doi.org/10.1002/14651858.CD007655.pub3(2016)).
38. Bleuler, M. and Stoll, W.A. Clinical use of reserpine in psychiatry: Comparison with chlorpromazine. *Ann New York Acad Sci* 61, 167-17, PMID: 14377284, (1955).
39. Nur, S. and Adams, C.E. Chlorpromazine versus reserpine for schizophrenia. *Cochrane Database Syst Rev.* 4, CD012122. <https://doi.org/10.1002/14651858.CD012122.pub2>, (2016).
40. Purves D *et al* (eds) (2001) Neurotransmitters, chap 1.6. Neuroscience, 2nd ed. Sinauer Associates, Inc
41. Sulston, J.E., Dew, M., Brenner, S. Dopaminergic neurons in the nematode *C. elegans*. *J Comp Neurol* 163, 215–226, <https://doi.org/10.1002/cne.901630207>(1975) .
42. Duerr, J.S., Frisby, D.L., Gaskin, J., Duke, A., Asermely, K., Huddleston, D., Eiden, L.E. and Rand, J.B. The *cat-1* gene of *Caenorhabditis elegans* encodes a vesicular monoamine transporter required for specific monoamine-dependent behaviors. *J Neurosci* 19, 72–84 <https://doi.org/10.1523/JNEUROSCI.19-01-00072.1999>, (1999).
43. Rajkumar, R., Merciline, A.D., Muthukrishnan, S.K., Subhashree, M., Datta, M. and Subramaniam, J.R. A combinatorial antihypertensive drug (reserpine and hydrazine) does not cause severe depression. *Gerontology and Geriatric Studies* 3, 1-6, <https://doi.org/10.31031/GGS.2018.03.000574>, (2018).
44. Hsieh, S., Schubert, S., Hoon, C., Mioshi, E., Hodges, J.R. Validation of the Addenbrooke’s Cognitive Examination III in frontotemporal dementia and Alzheimer’s disease. *Dement Geriatr Cogn Disord* 36, 242–250, <https://doi.org/10.1159/000351671>, (2005).
45. Matías-Guiu, J.A., Valles-Salgado, M., Rognoni, T. *et al.*, Comparative Diagnostic Accuracy of the ACE-III, MIS, MMSE, MoCA, and RUDAS for Screening of Alzheimer Disease. *Dement Geriatr Cogn Disord* 43, 237–246, <https://doi.org/10.1159/000469658> (2017).
46. Nasreddine, Z.S., Phillips, N.A., Bédirian, V., Charbonneau, S., Whitehead, V., Collin, I., Cummings, J.L., Chertkow, H. (2005) The Montreal Cognitive Assessment, MoCA: a brief screening tool for mild cognitive impairment. *J Am Geriatr Soc.* 53, 696–699. <https://doi.org/10.1111/j.1532-5415.2005.53221.x>

47. Chan, M. (2013) A Global brief on Hypertension. Silent killer, global public health crisis. WHO Report.
48. Kherada, N., Heimowitz, T. and Rosendorff, C. Antihypertensive Therapies and Cognitive Function: a Review *Curr Hypertens Rep* **17**, 792 <https://doi.org/10.1111/j.1532-5415.2005.53221.x> (2015).
49. Tripathi, R. and Kumar, K. Illiteracy and cognition in older adults. *Indian Journal of Psychological Medicine* **34**(4), 406 <https://doi.org/10.4103/0253-7176.108238> (2012).
50. Mathuranath PS, Cherian JP, Mathew R, George A, Alexander A, Sarma SP. Mini Mental State Examination and the Addenbrooke's Cognitive Examination: Effect of education and norms for a multicultural population. *Neurol India* **55**, <https://doi.org/10.4103/0028-3886.32779> (2007).
51. Curb JD, Schneider K, Taylor JO, Maxwell M and Shulman N Antihypertensive Drug Side Effects in the Hypertension Detection and Follow-Up Program. *Hypertension* **11**, 1151-1155, PMID: 3350594 (1988).
52. Feigenbaum LJ Reserpine and Thiazide for Hypertension—An Inexpensive Therapy for Older Patients. *Western Journal of Medicine* **158**, 535, <https://doi.org/PMID: 8342280>(1993).

Author Contribution: Conceptualization JRS; Methodology: SKM, ADM, MaD* and JRS; Validation- ADM; Consolidation – RR, ADM and MS; Formal analysis-MS, MD, VJD and JRS; Resources -JRS.; writing – original draft -JRS, review – all authors; editing -JRS ; Administration and co-ordination – RR; Supervision- JRS and MaD*; MaD*- Manjula Datta

Fig. 1

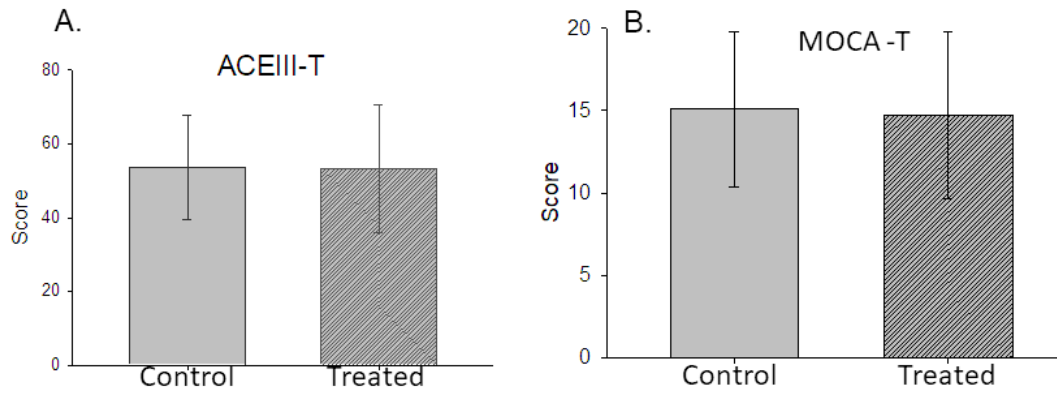


Fig. 2

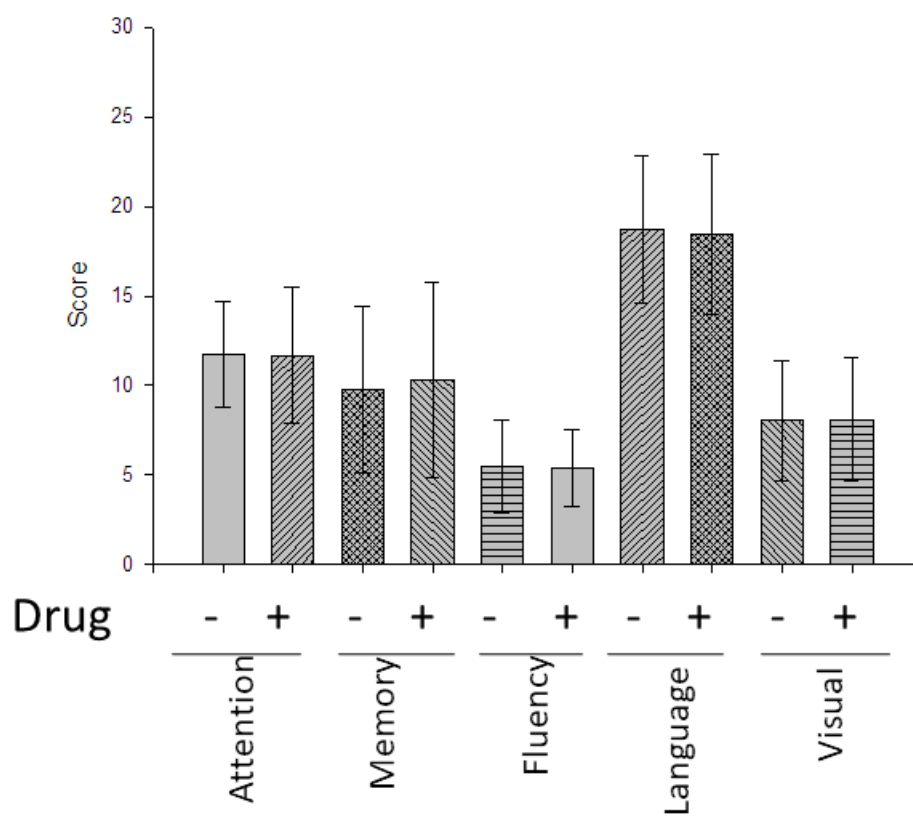


Fig. 3

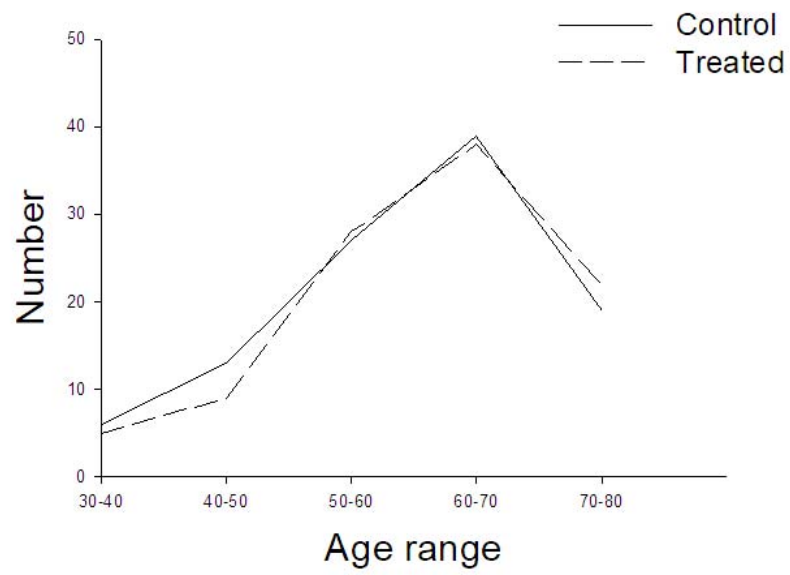


Fig. 4

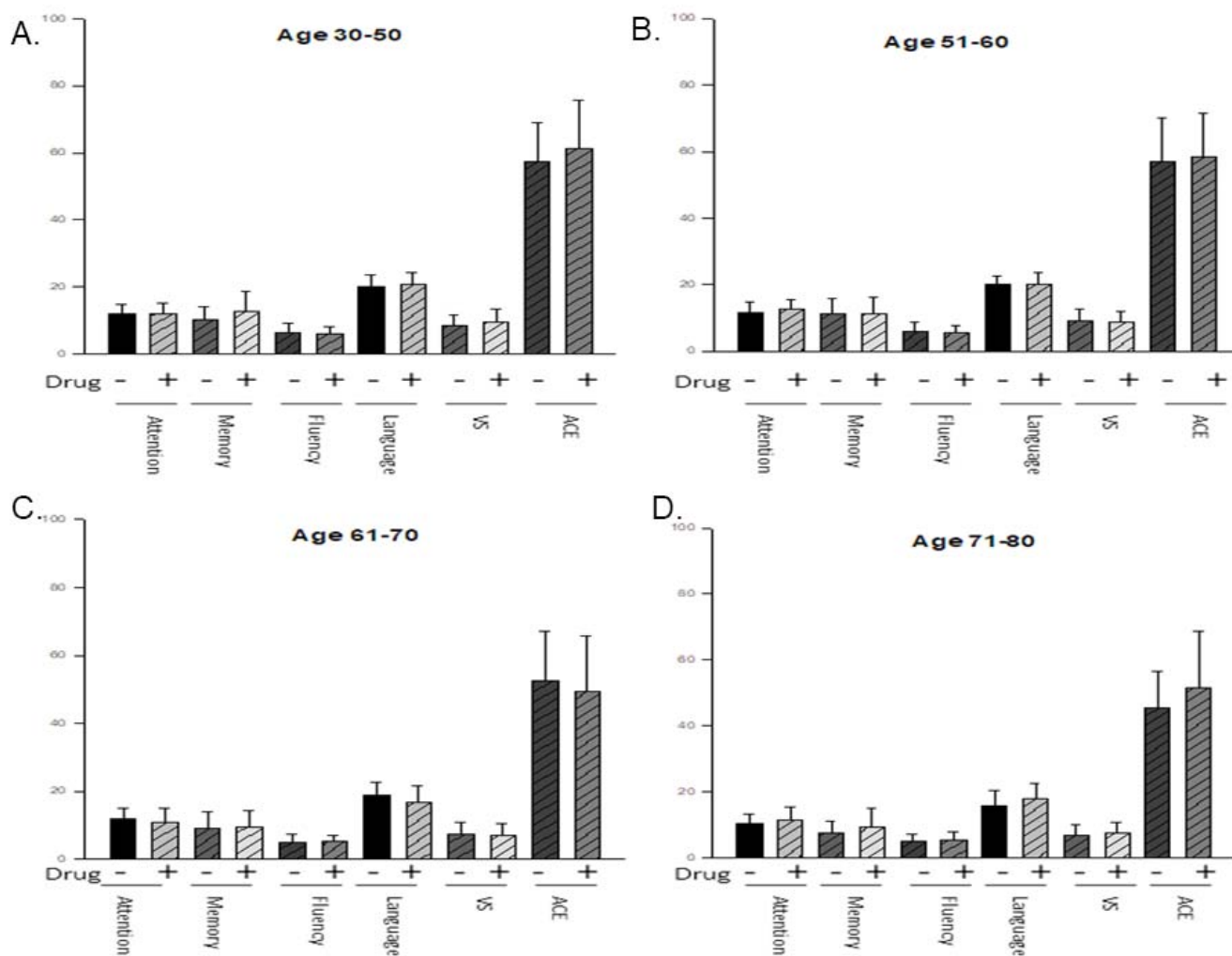


Fig. 5

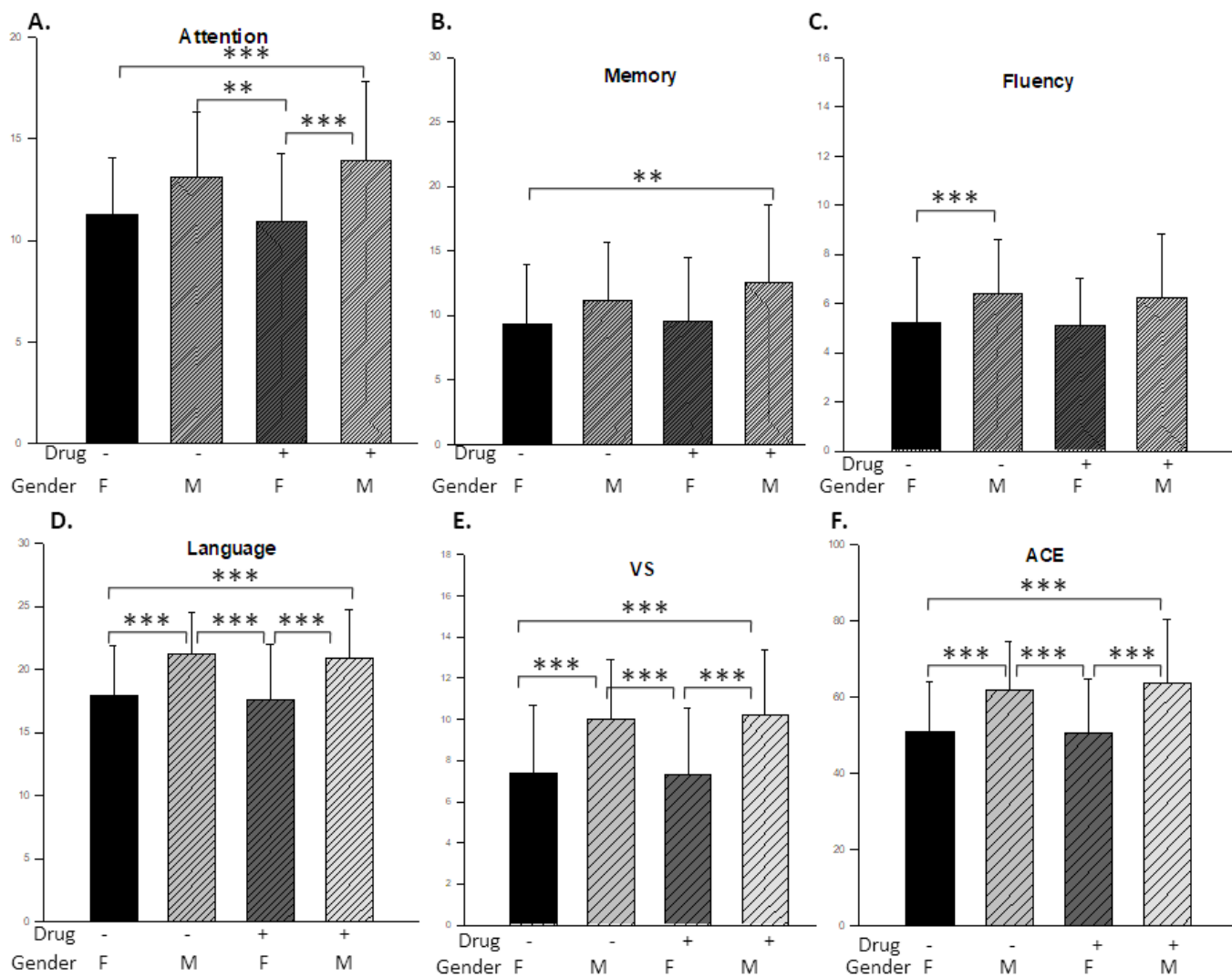


Table -1 Addenbrooke’s (ACE-III-T) Cognitive Score

| Description | Score | | | |
|---------------------------|------------------|------|-----------------|-------|
| | Control (N =107) | % | Treated (N=106) | % |
| Cognitive domains (score) | | | | |
| Attention (18) | 11.74 + 3 | 65 | 11.7 +3.7 | 65 |
| Memory (26) | 9.8+4.6 | 37.6 | 10.3 +5.1 | 40 |
| Language (26) | 18.7 + 4.1 | 72 | 18.5 +4.5 | 71.1 |
| Fluency (14) | 5.5+2.6 | 39.2 | 5.4 +2.2 | 38.5 |
| Visual (16) | 8.04 + 3.04 | 50.4 | 8.1 +3.1 | 50.6 |
| ACE-III-T Total (100) | 53.6 + 14 | 53.6 | 53.27 +17.4 | 53.27 |
| ACE-III-T above 60 | 35 (N) | | 34 (N) | |
| ACE-III-T below 40 | 13 (N) | | 18(N) | |

(N) – No of subjects

Table: Agewise comparison of cognitive domains with and without antihypertensive drug regimen

| Age group in years | Attention | | Memory | | Fluency | | Language | | Viso-spatial | | ACE- Total | |
|-----------------------|------------|----------|------------|----------|----------|-----------|-----------|-----------|--------------|----------|----------------|-----------------|
| | Control | Treated | Control | Treated | Control | Treated | Control | Treated | Control | Treated | Control | Treated |
| 30-50 | 12.5 ± 2.8 | 12.1±3 | 11 ±5.1 | 12.9±5.8 | 6.5 ±2.9 | 5.9 ± 2.4 | 20.2 ±3.8 | 20.8 ±3.6 | 9 ±3.3 | 9.6±3.7 | 57.2±14.1 (19) | 61.2±14.4 (14) |
| 51-60 | 11.7 ± 3 | 12.8±2.9 | 11.1 ± 4.6 | 11.3±4.9 | 5.8 ± 3 | 5.6 ± 2.3 | 20 ±2.5 | 20 ±3.5 | 9.2 ± 3.5 | 8.8 ±3.3 | 57.2±12.8 (27) | 58.6 ±13.1 (31) |
| 61-70 | 12 ±3.1 | 10.8±4.2 | 9.3±4.8 | 9.3±5.1 | 5.1±2.4 | 5.2 ±1.8 | 18.8±3.9 | 16.8 ±4.7 | 7.5 ± 3.2 | 7.2 ±3.4 | 52.6±14.3 (39) | 49.4±16.2 (37) |
| 71-80 | 10.7 ±3 | 11.4±3.9 | 7.5±3.5 | 9.2±5.8 | 4.9±2.1 | 5.4±2.5 | 15.8±4.6 | 17.7±4.8 | 6.9±3.2 | 7.5±3.2 | 45.5±11.2 (19) | 51.4±17.5 (22) |
| 81-90 | 12±2.6 | 10.5±9.2 | 9.3±3.5 | 6.5±9.2 | 4.7±2.5 | 5±1.4 | 15±7.2 | 16±4.2 | 7±4 | 9.5±4.9 | 48±18.5 (3) | 47.5±29 (2) |

ACE-III-Tamil -total and the individual domains, attention, memory, fluency and visuo-spatial comparison based on age with(Treatment) antihypertensive treatment and without(control) are given. ± Standard deviation (S.D) is given.

Table -3 Gender wise comparison of cognitive domains of ACE-III-T

| Gender | Attention | | Memory | | Fluency | | Language | | Visuo-spatial | | ACE -Total | |
|---------------|-----------|----------|----------|----------|---------|---------|----------|----------|---------------|------------|------------------------|------------------------|
| | Control | Treated | Control | Treated | Control | Treated | Control | Treated | Control | Treated | Control | Treated |
| Female | 11.2±2.7 | 10.8±3.3 | 9.3±4.6 | 9.5±4.9 | 5.2±2.6 | 5.1±1.8 | 17.9±4.0 | 17.5±4.3 | 7.3±3.2 | 7.3±3.2 | 50.8 ± 13.3 (n=80)* | 50.5 ± 14.3 (n=78)* |
| Male | 13.1±3.2 | 13.9±3.8 | 11.1±4.5 | 12.5±6.0 | 6.4±2.1 | 6.2±2.5 | 21.1±3.3 | 20.8±3.8 | 10.0±2.8 | 10.2 ± 3.1 | 61.8 ± 12.7 (n=27)* | 63.7±16.6 (n=28)* |

*n– number of subjects is the same for ACE total and the individual domains.