

## The genetic architecture of left ventricular non-compaction reveals both substantial overlap with other cardiomyopathies and a distinct aetiology in a subset of cases

Francesco Mazzarotto, PhD<sup>1,2,3,4</sup>, Megan H. Hawley, MS, CGC<sup>5</sup>, Matteo Beltrami, MD<sup>1</sup>, Leander Beekman, BSc<sup>6</sup>, Antonio de Marvao, PhD, MRCP<sup>7</sup>, Kathryn A. McGurk, PhD<sup>3</sup>, Ben Statton, MSc, BAppSc(MR)<sup>7</sup>, Beatrice Boschi, MSc<sup>8</sup>, Francesca Girolami, MSc<sup>9</sup>, Angharad M. Roberts, MBBS, MRCP, PhD<sup>3,4</sup>, Elisabeth M. Lodder, PhD<sup>6</sup>, Mona Allouba MSc<sup>10</sup>, Soha Romeih, MD, PhD, FESC, FSCMR<sup>10</sup>, Yasmine Aguib PhD<sup>10</sup>, A. John Baksi, PhD, MRCP<sup>3,4</sup>; Antonis Pantazis, MD<sup>4</sup>; Sanjay K. Prasad, MD<sup>3,4</sup>; Elisabetta Cerbai, PhD<sup>11</sup>, Magdi H. Yacoub, MD, PhD, FRS<sup>10,12</sup>, Declan P. O'Regan, PhD, FRCP<sup>7</sup>, Stuart A. Cook, PhD, FRCP<sup>3,7,13,14</sup>, James S. Ware, PhD, MRCP<sup>3,4,7</sup>, Birgit Funke, PhD, FACMG<sup>15</sup>, Iacopo Olivotto, MD<sup>1,2</sup>, Connie R. Bezzina, PhD<sup>6</sup>, Paul J.R. Barton, PhD<sup>3,4</sup>, Roddy Walsh, PhD<sup>6</sup>.

### Affiliations

1. Cardiomyopathy Unit, Careggi University Hospital, Florence, Italy.
2. Department of Experimental and Clinical Medicine, University of Florence, Italy.
3. National Heart and Lung Institute, Imperial College London, London, UK.
4. Cardiovascular Research Centre, Royal Brompton and Harefield NHS Foundation Trust, London, UK.
5. Laboratory for Molecular Medicine, Partners HealthCare Personalized Medicine, Cambridge, MA, USA.
6. Amsterdam UMC, University of Amsterdam, Department of Clinical and Experimental Cardiology, Heart Centre, Amsterdam Cardiovascular Sciences, Meibergdreef 9, Amsterdam, Netherlands.
7. MRC London Institute of Medical Sciences, Imperial College London, London, UK.
8. Genetic Unit, Careggi University Hospital, Florence, Italy.
9. Department of Paediatric Cardiology, Meyer Children's Hospital, Florence, Italy.
10. Aswan Heart Centre, Aswan, Egypt.
11. Department of Neurosciences, Psychology, Drug Research and Child Health (NeuroFarBa), University of Florence, Italy.
12. National Heart and Lung Institute, Heart Science Centre, Harefield Hospital, London, UK.
13. National Heart Research Institute Singapore, National Heart Centre Singapore, 168752, Singapore.
14. Duke-National University of Singapore, Singapore.
15. Department of Pathology, Harvard Medical School/Massachusetts General Hospital, Boston, MA, USA.

**Corresponding author:** Roddy Walsh - Department of Clinical and Experimental Cardiology, Heart Centre, Academic Medical Centre, Meibergdreef 9, 1105 AZ, Amsterdam, the Netherlands. **Email:** [r.t.walsh@amsterdamumc.nl](mailto:r.t.walsh@amsterdamumc.nl)

## Abstract

**Background:** Left ventricular non-compaction (LVNC) is a condition characterised by trabeculations in the myocardial wall and is the subject of considerable conjecture as to whether it represents a distinct pathology or a secondary phenotype associated with other cardiac diseases, particularly cardiomyopathies. We sought to investigate the genetic architecture of LVNC by identifying genes and variant classes robustly associated with disease and comparing these to other genetically characterised cardiomyopathies.

**Methods:** We performed rare variant association analysis using six different LVNC cohorts comprising 840 cases together with 125,748 gnomAD population controls and compared results to similar analyses with dilated cardiomyopathy (DCM) and hypertrophic cardiomyopathy (HCM) cases.

**Results:** We observed substantial overlap in genes and variant classes enriched in LVNC and DCM/HCM, indicating that in many cases LVNC belongs to a spectrum of more established cardiomyopathies, with non-compaction representing a phenotypic variation in patients with DCM- or HCM-causing variants. In contrast, five variant classes were uniquely enriched in LVNC cases, of which truncating variants in *MYH7*, *ACTN2* and *PRDM16* may represent a distinct LVNC aetiology. *MYH7* truncating variants are generally considered as non-pathogenic but were detected in 2% of LVNC cases compared to 0.1% of controls, including a cluster of variants around a single splice region. Individuals with *MYH7* truncating variants identified in the UK Biobank and cohorts of healthy volunteers also displayed significantly greater non-compaction compared to matched controls, with 50% meeting the diagnostic criteria for LVNC. Additionally, structural variants (exon deletions) in *RYR2* and missense variants in the transmembrane region of *HCN4* were enriched in LVNC cases, confirming prior reports regarding the association of these variant classes with combined LVNC and arrhythmia phenotypes.

**Conclusions:** We demonstrated that genetic association analysis can clarify the relationship between LVNC and established cardiomyopathies, highlighted substantial overlap with DCM/HCM but also identified variant classes associated with distinct LVNC and with joint LVNC/arrhythmia phenotypes. These results underline the complex genetic landscape of LVNC and inform how genetic testing in LVNC cases should be pursued and interpreted.

## Introduction

Left ventricular non-compaction (LVNC) is an abnormality of the left ventricular myocardial wall characterised by a compacted epicardial layer and a non-compacted endocardial layer with prominent trabeculations and intertrabecular recesses. While hypertrabeculation can be observed in a variety of syndromic genetic diseases and as a result of loading conditions (e.g. pregnancy or intensive athletic exercise where it is presumed not to be pathologic<sup>1,2</sup>), LVNC is defined as a cardiac-restricted condition and is typically diagnosed when the ratio of non-compacted to compacted layer (NC/C) is 2 to 2.3. As LVNC can occur either in conjunction with other cardiac diseases or as an isolated phenotype, its true nature is a matter of much debate and conjecture<sup>3-5</sup>. This is reflected also by the different classifications assigned to LVNC by the American Heart Association<sup>6</sup> (primary genetic cardiomyopathy) and by the European Society of Cardiology<sup>7</sup> (unclassified cardiomyopathy).

LVNC is observed in patients with an array of genetic cardiac conditions, including cardiomyopathies, arrhythmias, aortopathies and congenital heart disease<sup>8</sup>, suggesting that it may represent a specific phenotypic trait in the presence of an underlying pathology rather than a distinct genetic cardiomyopathy. Initial reports of genetic variants identified in patients with LVNC supported this theory, as most were in sarcomeric genes associated with hypertrophic cardiomyopathy (HCM) and dilated cardiomyopathy (DCM)<sup>9</sup>. The clinical screening of relatives of LVNC patients often detected features more associated with cardiomyopathies other than LVNC<sup>10</sup>, suggesting that in certain individuals other genetic or environmental factors interact with a cardiomyopathy-predisposing mutation to produce a non-compaction phenotype. However, the true nature and genetic aetiology of LVNC, and whether it can be considered a separate disease entity or a secondary phenotype occurring in certain patients with primary cardiomyopathies and other cardiac diseases, remains uncertain.

Several recently published studies have used large panels of genes associated with inherited cardiac conditions to evaluate the genetic basis of LVNC<sup>11-15</sup>. However, while providing valuable insights, these studies were individually underpowered to establish statistically robust association of individual genes, particularly for genes that are rarely causative. Additionally, the use of large panels that include genes not validated as causative in LVNC increases the risk of false positive associations, particularly where uniform classification criteria are applied for all genes. As with all genetic disease, the identification of fully validated disease-causing genes is a prerequisite for the successful and reliable adoption of genetic testing in the clinic.

The application of candidate gene studies and large panel sequencing to investigate the genetic basis of cardiomyopathies has led to a large expansion in gene to disease associations, though many lacked robust statistical evidence. Large population genetic databases including ExAC and gnomAD (<https://gnomad.broadinstitute.org/>) have demonstrated an unexpectedly large prevalence of rare variation in many genes, resulting in the need to re-assess these potential associations and highlighting how rarity alone is not sufficient to deem a variant as disease-causing. While stringent assessment of the evidence linking genes to diseases, such as that applied by the ClinGen initiative<sup>16,17</sup>, can highlight erroneous associations, rare variant burden analysis provides a robust statistical approach to identify and prioritise the most relevant genes for Mendelian diseases. We have recently used these techniques to clarify the genetic basis of cardiomyopathies<sup>18,19</sup>, and confirmed that genes characterised by a significant excess of rare variants in cases versus controls account for the vast majority of HCM patients with an identified pathogenic variant<sup>20</sup>.

Here we perform a meta-analysis of four previously published and two unpublished cohorts of sequenced LVNC cases to identify the genes and variant classes significantly associated with this

condition. Such genes are likely to account for the preponderance of disease-causing variants in LVNC patients and should therefore be prioritised for genetic testing. By comparing these findings with equivalent data from other cardiomyopathy cohorts, we can determine the extent to which LVNC is a distinct genetic disease or a phenotypic expression of other cardiomyopathies or cardiac diseases. We demonstrate substantial overlap between LVNC and DCM/HCM but also identify variant classes that are distinctly associated with LVNC and LVNC/arrhythmia phenotypes.

## Methods

### LVNC cohorts

Six distinct LVNC cohorts were assessed in this study and are summarised in Table 1 (the number of cases sequenced per gene in each cohort is detailed in Table S1). Two of these cohorts, Careggi University Hospital in Florence, Italy (32 cases) and the Laboratory for Molecular Medicine (LMM), Partners Healthcare, Boston, USA (233 cases) were previously unpublished. All cohorts were from European or North American groups and laboratories and therefore cases were likely to be of majority Caucasian ethnicity. All cohorts were sequenced with broad panels of genes associated with cardiomyopathies and other cardiac conditions, with the exception of the study by Klaassen *et al.*<sup>9,21,22</sup> (sequencing restricted to 8 sarcomeric genes and *PRDM16*) and Miszalski-Jamka *et al.*<sup>11</sup> (whole-exome sequencing was performed but only data from 104 genes was published). For previously published studies, we included in our analysis only those studies where all rare variants detected in cases were listed, regardless of their diagnostic classification. For the LMM cohort, data collection for this study was approved by the Partners HealthCare Institutional Review Board (protocol 2006P001108: Genotype-Phenotype Studies for Cardiomyopathies). For the Florence cohort, all participants gave written informed consent and the study was approved by the relevant regional research ethics committee. See Supplemental Methods for full details of each cohort.

Study	Year	Population	LVNC cases	Genes sequenced
Florence	<i>Previously unpublished</i>	Italy	32	81 (Panel)
LMM	<i>Previously unpublished</i>	USA	233	64 (Panel)
van Waning <i>et al.</i> <sup>12</sup>	2018	Netherlands	327	66 (Panel)
Richard <i>et al.</i> <sup>13</sup>	2018	France	95	107 (Panel)
Miszalski-Jamka <i>et al.</i> <sup>11</sup>	2017	Poland/USA	90	104 (WES)
Klaassen <i>et al.</i> <sup>9,21,22</sup>	2008/11/13	Swiss/German	63	9 (dHPLC/Sanger)

Table 1: Details of the LVNC cohorts assessed in this study.

### *Rare variant burden testing for LVNC cases*

Rare variant burden testing between case cohorts and gnomAD exomes (v2.1) population reference samples (n=125,748) was performed as previously described<sup>18</sup>. Rare variants were defined as having a filtering allele frequency (FAF) in gnomAD less than 0.0001 (see Supplemental Methods for further details). Analyses were performed separately for predicted truncating variants (nonsense, frameshift, and splice donor and acceptor variants) and non-truncating variants (missense, small inframe insertions/deletions and stop lost). The frequency of rare variants in 70 genes (i.e. those sequenced and reported in at least half of the constituent disease cohorts to focus on the most relevant genes for LVNC) was compared between LVNC cases and gnomAD. The number of LVNC cases sequenced per gene ranged from 173 to 820. All rare variants detected in LVNC cases were included in burden testing regardless of the clinical classification applied in any of the constituent cohorts. To account for variable coverage in exome-sequenced gnomAD samples, the number of individuals deemed sequenced per gene in gnomAD was calculated using the mean number of alleles across all rare protein-altering variants detected in gnomAD for the gene in question, and then converted from allele number to individuals (divided by 2 for autosomal genes and 1.46 for X chromosome genes based on the male-female ratio in gnomAD). Statistical significance for enrichment of variants in cases was assessed with a one-sided Fisher's exact test, with Bonferroni multiple testing correction applied for the number of genes tested. The case excess was defined as the difference in rare variant frequencies between case and population reference cohorts. The full list of rare variants detected in each LVNC cohort is listed in Table S2.

For those genes not showing overall enrichment, we tested for potential domain-specific enrichment of non-truncating variants in LVNC cases using an unsupervised, sequence-based clustering algorithm<sup>23</sup> (details in Table S3). Furthermore, we also assessed variant enrichment in cases for the established *RBM20* DCM pathogenic hotspot between residues 634 and 638. In addition, we analysed the occurrence of structural variants (SVs) in *RYR2* in LVNC cases and controls, based on previously published reports (further details below and in Supplemental Methods).

### *Comparison to gene associations in other cardiomyopathies*

Variant classes with a significant excess in LVNC versus gnomAD were compared to the results of similar analyses in DCM and HCM cohorts<sup>18,20</sup> (see Supplemental Methods and Table S4 for details of the cohorts used). Variant classes enriched in LVNC patients as well as in DCM and/or HCM indicate a potential shared genetic aetiology between LVNC and the more well characterised cardiomyopathies, whereas those unique to LVNC suggest a distinct aetiology.

### *Effect of MYH7 truncating variants in population controls*

The maximum non-compacted to compacted layer (NC/C) ratios in individuals with a *MYH7* truncating variant in UK Biobank (n=12,447 individuals with both exome sequencing and cardiac magnetic resonance imaging) and healthy volunteers from the UK Digital Heart Project (n=912)<sup>24</sup> and the Egyptian Collaborative Cardiac Genomics (ECCO-GEN) Project (n=400)<sup>25</sup> were compared to an equivalent number of year-of-birth-, sex-, and ethnicity-matched non-carriers to assess the effect of these variants on non-compaction (Figure S1 and further details in Supplemental Methods). Significance was assessed with a one-sided Wilcoxon Rank Sum test.

## Results

### Rare variant burden in LVNC cases versus gnomAD

To investigate the genes and variant classes associated with LVNC, we compared the frequency of rare variation in six LVNC cohorts to gnomAD exomes population controls. A significant excess of rare variants was seen in LVNC cases compared with gnomAD ( $p < 0.0007$  with Bonferroni adjustment for testing 70 genes) in the case of truncating variants in *TTN* (excess burden in cases = 8.6%), *MYBPC3* (2.0%), *MYH7* (2.0%), *PRDM16* (1.3%), *ACTN2* (0.6%) and *RBM20* (0.5%), for non-truncating variants in *MYH7* (10.4%), *ACTC1* (2.0%), *MYBPC3* (1.7%), *TNNT2* (1.6%), *TPM1* (0.8%) and structural variants (SVs, exon deletions) in *RYR2* (1.2%) (Figure 1 and Table 2, for full details on all genes see Table S5). Although non-truncating variants were not significantly enriched overall for *RBM20* and *HCN4*, a significant excess was observed for the DCM pathogenic hotspot in *RBM20* (0.5%) and the transmembrane region of *HCN4* (3.2%). Based on the overall excess in these significant variant classes alone, a causative genetic variant would be identified in an estimated 35.4% of LVNC cases, in line with contemporary estimates for other cardiomyopathies<sup>18,19</sup>.

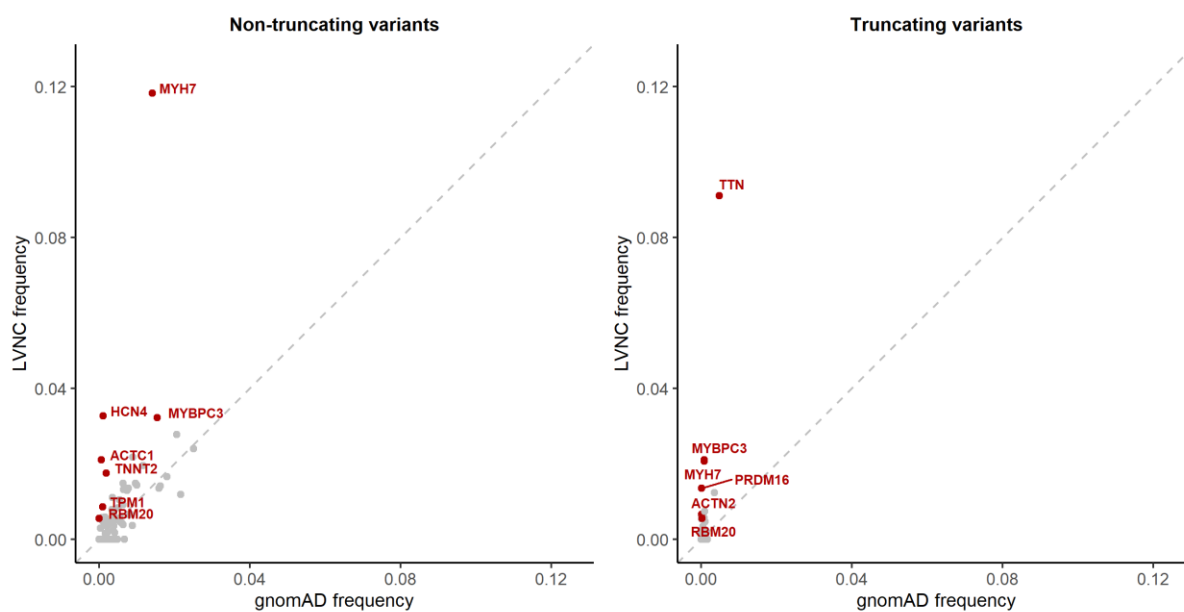


Figure 1: Comparison of the frequency of rare variants for the combined LVNC cohorts (y-axis) and gnomAD population reference samples (x-axis), for non-truncating variants (left) and truncating variants (right). Genes with a significant excess in LVNC cases ( $p < 0.0007$  with multiple testing correction) are highlighted in red. For non-truncating variants, data is restricted to the transmembrane region and pathogenic hotspot for *HCN4* and *RBM20* respectively, as described in the text.

Gene	Variant Class	Other cardiac associations	gnomAD count/total	gnomAD freq.	LVNC count/total	LVNC freq.	Case excess	p-value	Odds ratio (95% CI)
MYH7	Non-Truncating	DCM, HCM	1754/124979	1.40%	97/820	11.83%	10.43%	7.7E-56	9.4 (7.6-11.7)
TTN	Truncating	DCM	590/122054	0.48%	47/516	9.11%	8.63%	1.2E-42	20.6 (15.1-28.1)
ACTC1	Non-Truncating	DCM, HCM	73/125274	0.06%	16/760	2.11%	2.05%	3.1E-19	36.9 (21.4-63.7)
MYBPC3	Truncating	HCM	89/115675	0.08%	17/805	2.11%	2.04%	1.7E-18	28.0 (16.6-47.3)
MYH7	Truncating	-	97/124979	0.08%	17/820	2.07%	1.99%	2.4E-18	27.3 (16.2-45.8)
PRDM16	Truncating	-	7/120147	0.01%	6/444	1.35%	1.35%	4.0E-12	235.1 (78.7-702.4)
TNNT2	Non-Truncating	DCM, HCM	227/124805	0.18%	13/741	1.75%	1.57%	2.8E-09	9.8 (5.6-17.2)
HCN4 (tm)	Non-Truncating	Bradycardia	107/103942	0.10%	7/214	3.27%	3.17%	4.8E-09	32.8 (15.1-71.4)
RYR2	Exon deletion	CPVT	0/10738	0.00%	5/429	1.17%	1.17%	8.2E-08	278.3 (15.4-5040.7)
ACTN2	Truncating	-	13/125085	0.01%	4/611	0.66%	0.65%	1.3E-06	63.4 (20.6-195.0)
RBM20 (hs)	Non-Truncating	DCM	1/76260	0.00%	3/546	0.55%	0.55%	1.4E-06	421.3 (43.8-4056.9)
TPM1	Non-Truncating	DCM, HCM	105/124430	0.08%	6/702	0.85%	0.77%	4.2E-05	10.2 (4.5-23.3)
RBM20	Truncating	DCM	18/76260	0.02%	3/546	0.55%	0.53%	4.3E-04	23.4 (6.9-79.7)
MYBPC3	Non-Truncating	HCM	1780/115675	1.54%	26/805	3.23%	1.69%	4.6E-04	2.1 (1.4-3.2)

Table 2: Variant classes with a significant excess (after Bonferroni multiple testing correction) of rare variants in combined LVNC cohorts compared to gnomAD exomes. For TTN, only variants affecting exons included in >90% of the transcripts (Percent Spliced In (PSI) >0.9) were included<sup>26</sup>. For HCN4 and RBM20, only variants within the transmembrane region and pathogenic hotspot respectively were included, as described in Methods. For RYR2, only structural variant exon deletions are noted and compared to equivalent variants in gnomAD genomes.

### Overlap with variant classes associated with HCM and DCM

The variant classes enriched in LVNC were compared to those enriched in DCM and HCM (Figure 2), to enable assessment of the genetic overlap with LVNC. Truncating variants in *TTN* and *RBM20*, as well as non-truncating variants within the pathogenic DCM hotspot of *RBM20*, are significantly enriched in both LVNC and DCM. Truncating and non-truncating variants in *MYBPC3* are enriched in both LVNC and HCM. The proportion of LVNC cases with variants in *TTN* and *MYBPC3* is notably lower compared to DCM and HCM respectively, which may reflect the more heterogeneous aetiology of LVNC (Figure 2). A significant excess of non-truncating variants in four other sarcomeric genes (*MYH7*, *TNNT2*, *TPM1*, *ACTC1*) is observed in all three conditions. Of the enriched variant classes, non-truncating variants in *MYH7* had the highest frequency in LVNC cases (11.8%). These variants are also commonly observed in DCM and HCM (Figure 2). However, distinctive (though overlapping) patterns of variant clustering were observed in LVNC and HCM cohorts (Figure 3A), with variants in LVNC cases clustered around the N-terminus myosin head region (residues 39-415).

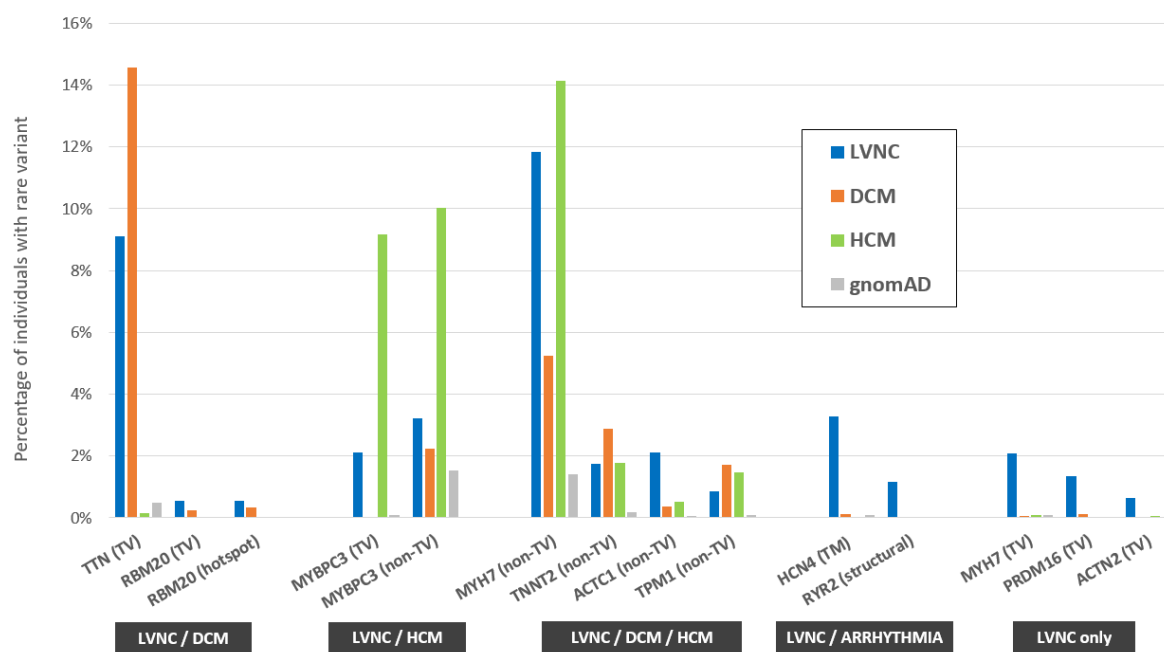


Figure 2: Variant classes with a significant excess in LVNC cases versus gnomAD, with comparison to equivalent frequencies of rare variants in DCM and HCM cohorts. Variant classes are grouped according to which conditions display significant enrichment over gnomAD – LVNC and DCM, LVNC and HCM, all three indications, LVNC and arrhythmia phenotypes and LVNC only. Variant classes shown are truncating variants (TV), non-truncating variants (non-TV) and pathogenic hotspot for *RBM20*, transmembrane region (TM) for *HCN4* and structural variants for *RYR2*.



### *Variant classes unique to LVNC*

Five variant classes were found to be significantly enriched solely in the LVNC cohorts, indicating such variants may yield a distinct non-compaction phenotype unrelated to either DCM or HCM. These include truncating variants in three cardiomyopathy-associated genes (*MYH7*, *PRDM16* and *ACTN2*) and specific variant classes in two arrhythmia-associated genes (*RYR2* and *HCN4*).

### *MYH7 truncating variants*

Overall, truncating variants in *MYH7* occur in 2.1% of LVNC cases compared to 0.05% in gnomAD ( $p=2.4E-18$ ) and are observed in each of the six constituent LVNC cohorts (Table 3, Table S6). These include a single splice donor variant, c.732+1G>A, present in six LVNC cases (with three other variants at this splice junction), as well as 10 other nonsense, frameshift and splice acceptor variants. Significant enrichment of *MYH7* truncating variants is observed even when excluding the c.732 splice junction variants ( $p=2.4E-09$ ), which, along with the variant distribution throughout the *MYH7* transcript (Figure 3A), suggests that such variants are generally pathogenic in LVNC with haploinsufficiency as likely mechanism of action.

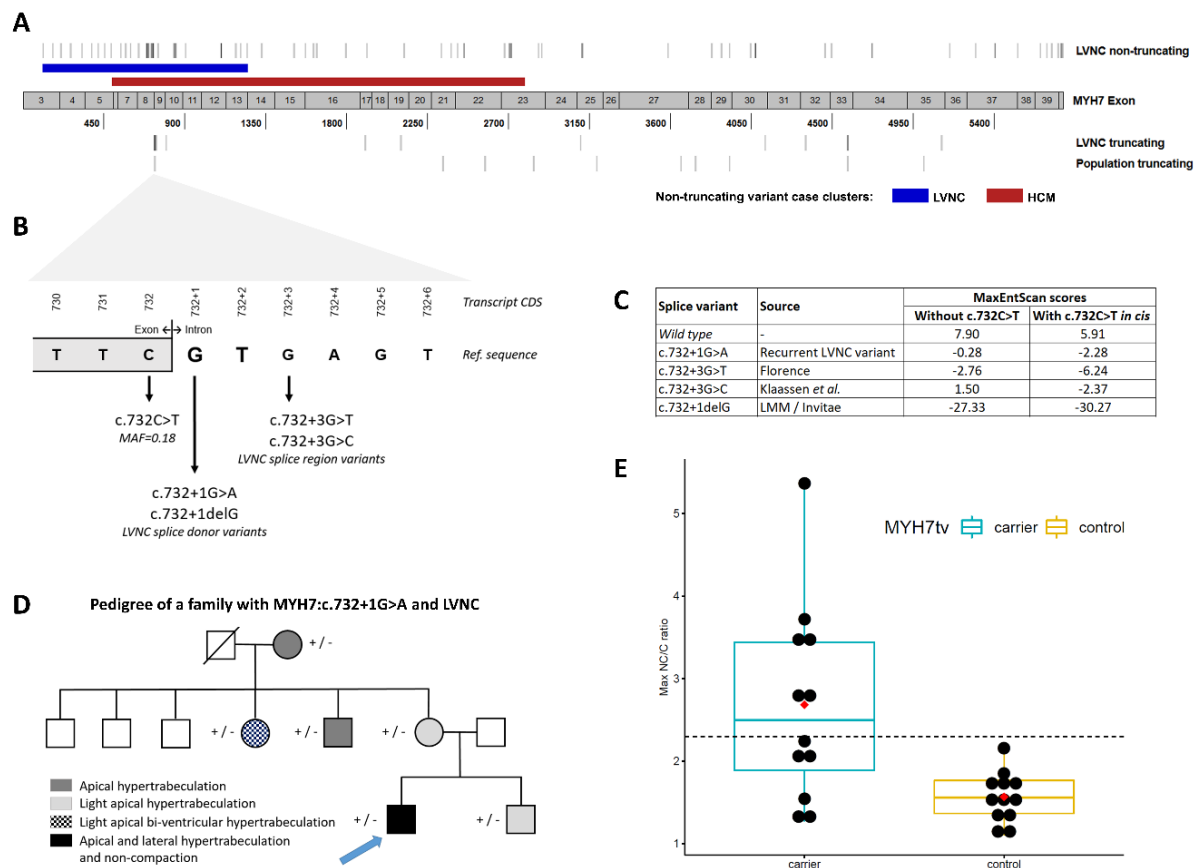
The c.732+1G>A splice donor variant was detected in 6 individuals including two probands in the Dutch cohort<sup>12</sup> (one of which was of Turkish origin<sup>27</sup>), two families in the Swiss/German cohort where it was determined by haplotype analysis to arise independently (reported by Klaassen *et al.* as c.818+1G>A<sup>9</sup>), one patient in the Italian cohort and one patient of unspecified ethnicity sequenced by LMM. These findings indicate that this is not a founder variant but one that has occurred recurrently in several different families and populations. This variant is detected in 1/125,745 individuals in the gnomAD exomes database (v2.1) and is therefore significantly enriched in the joint LVNC cohorts (Fisher's exact test,  $p=5.1E-13$ ). It is undetected in the gnomAD genomes (v3) database (71,702 samples).

In order to investigate this variant further we examined the Italian family pedigree in more detail. The proband is a 31-year old male with marked hypertrabeculation, apical and lateral non-compaction of the left ventricle and was diagnosed with LVNC at 14 years of age. He reported history of LVNC in his mother's family and had undergone cardiac ablation at 15 years of age to treat ventricular pre-excitation. Targeted (re)sequencing using the Illumina TruSight Cardio panel alongside echocardiography and ECG was performed on the proband, his brother and 4 maternal family members. The variant was detected in all six family members, all showed varying degrees of myocardial hypertrabeculation (Figure 3D). We attempted to assess the effect of this variant on *MYH7* transcription using RNA from blood lymphocytes (other tissue was not available) but were unable to amplify any product (Supplemental Methods).

A deletion variant at the same splice donor base (c.732+1delG) and two other variants in the surrounding splice region (c.732+3G>T and c.732+3G>C [previously reported as c.818+3G>C<sup>9</sup>], outside the canonical splice site and not included in the burden analysis) were observed in three LVNC cases from different cohorts (Table 3, Figure 3B). All of these variants are predicted to affect splicing by the MaxEntScan algorithm<sup>28</sup> (Figure 3C). No other variants in this splice region (intronic +1 to +8 bases) are detected in the gnomAD exomes (v2.1) or genomes (v3) databases. Interestingly, the adjacent synonymous exonic splice region variant, c.732C>T, is the only common splice region variant in *MYH7* (MAF=0.18) and is predicted by MaxEntScan to further disrupt splicing if co-occurring with the rare splice variants (Figure 3C). Whether there is a connection between the recurrence of rare splice variants in this splice region in LVNC cases and the presence of a common variant at the exon-intron

boundary will require further investigation. However, no enrichment of the common splice region variant (c.732C>T) was observed in LVNC cohorts compared to population matched gnomAD controls (Table S7).

We then assessed NC/C ratios in population controls carrying *MYH7* truncating variants. Of 12 individuals in the UK Biobank and healthy volunteer cohorts with *MYH7* truncating variants, 6 had ratios greater than 2.3 (the diagnostic criteria for LVNC). The NC/C ratio was significantly greater in variant carriers compared to matched controls in these cohorts ( $2.7 \pm 1.2$  vs  $1.6 \pm 0.3$ ,  $p=0.0034$ ) (Figure 3E, Table S8).



**Figure 3:** (A) Distribution of rare *MYH7* non-truncating variants demonstrates distinct (though overlapping) enriched clusters in LVNC cases (blue band) and HCM cases<sup>23</sup> (red band). *MYH7* truncating variants are distributed throughout the transcript in LVNC cases and population cohorts but with a cluster around the c.732 splice region. (B) Details of the c.732 splice region and associated variants found in LVNC cases. (C) MaxEntScan<sup>28</sup> scores for these variants (and the wild type sequence) with the reference exon base at c.732 and the c.732C>T common variant in cis. (D) Pedigree of the Italian family demonstrated segregation of the c.732+1G>A variant with non-compaction and/or varying degrees of myocardial hypertrabeculation. The proband alone additionally carried the *PRKAG2*:c.247C>T variant which, although classified as “likely benign” due to its frequency in population databases (0.13% in South Asians in gnomAD), has been proposed as a modifier aggravating the HCM phenotype in a small pedigree<sup>29</sup> and therefore may contribute to the more severe phenotype observed in the proband. (E) *MYH7*-truncating variants are associated with LV non-compaction in population cohorts. Maximum

*NC/C ratios of individuals identified with MYH7-truncating variants in population controls not selected for disease (see Methods), compared with age-and sex matched individuals without such variants drawn from the same populations. Boxplots show the median and interquartile range, red diamond indicates mean and the dashed line shows the diagnostic NC/C ratio of 2.3.*

#### *PRDM16 and ACTN2 truncating variants*

The truncating variants in *PRDM16* (occurring in 1.4% of LVNC cases) include two variants previously published in the Swiss/German cohort<sup>22</sup>, three variants in the Dutch cohort<sup>12</sup> and one variant in the LMM cohort (Table S9). Three truncating variants in *ACTN2* were observed in the Dutch cohort and one variant, p.Arg192X, in the Italian cohort. These findings add to existing evidence (Table 4 and Discussion) for a role for *PRDM16* and *ACTN2* in LVNC. Notably, there is evidence for constraint of truncating variants in gnomAD for both of these genes with fewer observed than expected variants for *PRDM16* (o/e ratio = 0.08) and *ACTN2* (0.12) and both defined as loss-of-function intolerant (pLI=1), offering additional supportive evidence for the deleteriousness of these variant classes.

#### *Variants in arrhythmia-associated genes - RYR2 and HCN4*

Variants in *RYR2* are the primary cause of catecholaminergic polymorphic ventricular tachycardia (CPVT), with pathogenic missense variants present in approximately 50% of cases. Deletion of exon 3 in *RYR2* has been described in CPVT cases<sup>30,31</sup> and recently in a number of patients and family pedigrees with complex phenotypes that include LVNC and CPVT<sup>32-35</sup> (Table 4). In this meta-analysis, five SVs, corresponding to deletions of whole exons, were observed in the *RYR2* gene in LVNC cases (three of exon 3 and one each of exons 2 and 19) (Table S9). No exon deletions for *RYR2* were detected in the gnomAD SV database derived from whole genome sequencing of 14,891 individuals<sup>36</sup>, suggesting such variants are rarely observed in the population.

The overall enrichment of non-truncating variants in *HCN4* (3.7% vs 1.1%) did not meet the significance threshold with multiple testing correction ( $p=0.002$ ). However, we found significant clustering of non-truncating variants in the trans-membrane region of the ion channel encoded by *HCN4* ( $p=3.5 \times 10^{-7}$ , Table S3) and therefore performed burden testing for variants within and outside this region. While no enrichment occurred outside of the transmembrane region ( $p=0.87$ ), a significant excess was observed for variants within the transmembrane region (3.3% vs 0.1%,  $p=4.8 \times 10^{-9}$ ). Of the *HCN4* carriers described in the constituent studies of this meta-analysis, a patient with the p.Tyr481His variant initially presented with bradycardia (although this patient also had two other variants classified as pathogenic - *FKTN*:p.Tyr371Cys and *RBM20*:p.Tyr283Glnfs\*14)<sup>12</sup> while 3/5 proband carriers of *HCN4* variants in the French study were reported to have bradycardia, as did four carriers of the p.Gly480Cys variant in one family<sup>13</sup> (Table S9). In contrast, the Italian LVNC patient with the only non-transmembrane *HCN4* variant detected in this study (p.Gly1077Ser) had a normal ECG, suggesting this variant is unlikely to be disease-causing.

CDS	Protein	Population/Cohort	Cases	Clinical and family details
<i>c.732 splice region</i>				
c.732+1G>A	-	Netherlands	2	Variant detected in father, 10 year old son and new-born with LVNC, absent in 2 unaffected sisters of father <sup>27</sup> .
		Switzerland/Germany	2	Variant in 6 affected family members, absent in 8 unaffected, LOD=2.55 (Family LVNC-101), variant in 3 affected family members, absent in 1 unaffected (Family LVNC-108).
		Italy	1	Variant detected in 6 family members with varying degrees of non-compaction and/or hypertrabeculation (Figure 3). None had the c.732C>T common variant.
		USA / LMM	1	Male, 0 months, cystic hygroma, Ebstein anomaly, LVNC and family history of LVNC. Variant also detected in twin brother with LVNC. Both had the c.732C>T common variant <i>in trans</i> . Both parents are unaffected.
c.732+1delG	-	USA / LMM	1	Female, 0 months, clinical diagnosis of LVNC with severely dilated left atrium and small secundum ASD, paternal family history of "enlarged heart" (father not tested) maternal family history of "fainting episodes" though variant not detected in mother.
c.732+3G>T	-	Italy	1	Detected in the affected mother (c.732C>T not detected) of an affected 5 year old son.
c.732+3G>C	-	Switzerland/Germany	1	Variant in 2 affected family members, absent in 1 unaffected (Family LVNC-109).
<i>Other MYH7 truncating variants</i>				
c.745C>T	p.Arg249X	Poland/USA	1	-
c.798T>A	p.Tyr266X	Netherlands	1	Detected in girl, 4 years, and affected father (grandfather died suddenly at 60) <sup>27</sup> .
c.1903A>T	p.Lys635X	Poland/USA	1	-
c.2085_2097dup	p.Glu700Glnfs*37	Netherlands	1	-
c.3100-2A>C	-	Netherlands	1	-
c.4125T>A	p.Tyr1375X	Netherlands	1	-
c.4354-2A>C	-	USA / LMM	1	Male, 15 years, clinical diagnosis of LVNC with biventricular dilation and PVCs
c.4588C>T	p.Arg1530X	France	1	-
		USA / LMM	1	Female, 15 years, clinical diagnosis of LVNC.
c.5110C>T	p.Gln1704X	USA / LMM	1	Male, 0 months, with Ebstein anomaly and LVNC, family history of CHD (septal defect) and arrhythmia. Variant <i>in trans</i> with MYH7:p.Arg1897His. Both parents unaffected.

Table 3: Details of MYH7 truncating variants detected in LVNC cases in the six cohorts used in this meta-analysis.

Gene	Study	Variant class	Description
PRDM16	Arndt <i>et al.</i> <sup>22</sup>	Large deletions	PRDM16 is responsible for cardiomyopathy associated with 1p36 deletion syndrome, as the minimal deletion region for 1p36 deletion patients with cardiomyopathy (the majority of which have LVNC) covered the terminal exons of PRDM16, although the findings of this study have been disputed <sup>37,38</sup> .
	Long <i>et al.</i> <sup>39</sup>	Truncating	A <i>de novo</i> frameshift PRDM16 variant, c.1047dupC/p.Ser350fs*48, was detected in a 4 month old child with DCM and mild features of LVNC.
	Delplanq <i>et al.</i> <sup>40</sup>	Truncating	A <i>de novo</i> nonsense PRDM16 variant, p.Gln353X, was detected in foetal case of LVNC.
ACTN2	Girolami <i>et al.</i> <sup>41</sup>	Missense	Four of eleven affected members of an Italian HCM family with the p.Met228Thr variant displayed evidence of LVNC (three apical, one lateral wall).
	Chiu <i>et al.</i> <sup>42</sup>	Missense	In an Australian family with a history of arrhythmias and SCD, the p.Ala119Thr variant segregated with disease – one member had evidence of apical trabeculations.
	Bagnall <i>et al.</i> <sup>43</sup>	Missense	An Australian family with the p.Ala119Thr variant displayed striking clinical heterogeneity, with individuals presenting with LVNC, DCM, SCD and idiopathic ventricular fibrillation.
RYR2	Marjamaa <i>et al.</i> <sup>32</sup>	Exon deletion	Two CPVT families with exon 3 deletions - the index patient of one of the families demonstrated increased trabeculation of the left ventricle suggestive of LVNC.
	Szentpali <i>et al.</i> <sup>33</sup>	Exon deletion	A 39 year old woman with the exon 3 deletion had features of both CPVT and LVNC.
	Onho <i>et al.</i> <sup>34</sup>	Exon deletion	Exon 3 deletion detected in 2/24 CPVT patients – girls aged 7 and 19 years with LVNC, bradycardia and history of syncope. Of 8 carriers of the exon 3 deletion in these two families, 7 exhibited LVNC whereas only 4 were diagnosed with CPVT.
	Campbell <i>et al.</i> <sup>35</sup>	Exon deletion	A patient with a <i>de novo</i> exon 3 deletion had a severe CPVT phenotype and developed LVNC which coincided with increasingly severe ventricular arrhythmias and sudden cardiac arrests.
HCN4	Milano <i>et al.</i> <sup>44</sup>	Missense	HCN4 variants detected in four Dutch families with bradycardia and LVNC, functional effects demonstrated for all variants in electrophysiological studies. p.Gly482Arg segregated with disease in a large pedigree. p.Tyr481His was detected in two families and p.Ala414Gly in one family with more limited segregation.
	Schweizer <i>et al.</i> <sup>45</sup>	Missense	p.Gly482Arg detected in a German family with LVNC and sinus node dysfunction.
	Millat <i>et al.</i> <sup>46</sup>	Missense	p.Gly482Arg detected in three sisters in a French family with LVNC and sinus bradycardia.
	Vermeer <i>et al.</i> <sup>47</sup>	Missense	p.Tyr481His detected in nine members of a family with sinus bradycardia, LVNC and aortic dilation.
	Hanania <i>et al.</i> <sup>48</sup>	Missense	p.Gly482Arg detected in three members of a family with aortic dilation, bradycardia and LVNC.

Table 4: Summary of published studies supporting a role in the non-compaction phenotype for PRDM16 and ACTN2 and in arrhythmogenic and non-compaction phenotypes for RYR2 and HCN4.

## Discussion

The meta-analysis of genetic sequencing data from 840 cases described here provides much needed clarity concerning the genetic basis of LVNC. By amalgamating data from several recently published and moderately sized studies with two new cohorts, we were able to identify genes and variant classes with robust statistical evidence of association with LVNC. These findings highlight the diverse aetiology underlying this phenotype and inform how genetic testing should be applied and interpreted for patients presenting with LVNC.

Our results also reveal a substantial overlap in genes and variant classes enriched in LVNC with those of the more genetically well-defined cardiomyopathies of DCM and HCM. Several other genes associated with DCM/HCM were nominally enriched in LVNC cases but did not meet the significance threshold (e.g. truncating variants in the *DSP* DCM gene and non-truncating variants in the *MYL2* HCM gene, Table S5). This likely reflects the more heterogeneous aetiology of LVNC, suggesting that genes more rarely implicated in DCM/HCM are generally causative in an even smaller proportion of LVNC cases.

These findings are consistent with the increasingly held view that LVNC largely belongs to the spectrum of more common and established cardiomyopathies. The expression of the particular trait (i.e. hypertrabeculation) represents a striking phenotypic variation but ultimately one with limited impact on the pathophysiology and natural history of the underlying paradigm (HCM or DCM). Such a concept is well reflected in recent management consensus documents which recommend assessing risk and treating LVNC according to the principles of HCM or DCM, as appropriate. The factors that cause patients with DCM/HCM-causing variants to develop and/or present with LVNC rather than the more standard phenotypes are unknown but could involve genetic and non-genetic modifiers. One intriguing candidate is the *MIB1* gene, a regulator of the Notch signalling pathway that has previously been implicated in LVNC<sup>49</sup>. Three *MIB1* truncating variants were identified in the Dutch LVNC cohort, and in all cases occurring together with a *TTN* truncating variant, suggesting they could modify the DCM phenotype typically associated with *TTN* variants<sup>12</sup>. As *MIB1* truncating variants are relatively common in the population, with the tenth lowest pLI score of all human genes in gnomAD and an o/e ratio of 1.83 (1.54-1.97), they may act as modifiers rather than primary pathogenic variants.

A recent study assessing clinical and genetic screening in families of LVNC patients provided further evidence for this hypothesis — many family members had DCM or HCM without non-compaction, and the genotype of the proband was broadly predictive of the phenotype in relatives (*TTN* and *MYH7* tail domain variants were associated with DCM in relatives and *MYBPC3* variants were associated with HCM)<sup>50</sup>. Our results suggest it would be prudent to include all proven DCM and HCM genes for genetic testing in LVNC cases (whether these genes have been validated through statistical association<sup>18,20</sup> or the curation of published evidence<sup>17,20</sup>) in order to inform clinical management in both patients and family members through clinical and genetic cascade screening.

In contrast, van Waning *et al.* also found that *MYH7* head domain variants in probands were predictive of isolated LVNC in relatives, indicating that specific variant classes may be associated with a distinctive non-compaction phenotype rather than underlying DCM/HCM. Accordingly, we also detected additional variant classes not associated with other cardiomyopathies and enriched in LVNC patients in 5-10% of cases. This patient subset may therefore have an aetiology separate from other cardiomyopathies or cardiac conditions and represent genetically distinct disease where non-compaction is the primary or presenting phenotype.

Of the variant classes unique to LVNC, perhaps the most notable are truncating variants in *MYH7*. Such variants have generally been considered as non-pathogenic and indeed are not associated with either HCM or DCM<sup>18</sup>, where non-truncating (largely missense) variants act through a dominant negative mechanism (with opposing activating and inactivating functions). However, they are observed in over 2% of LVNC cases, consistently across all of the constituent cohorts in this meta-analysis, and are significantly enriched over the general population rate in gnomAD ( $p=2.4E-18$ ). Data from population controls provide further evidence for the role of *MYH7* truncating variants in LVNC. A high population-level penetrance was observed for these variants, with 50% of carriers meeting the diagnostic criteria for LVNC. NC/C ratios were also significantly greater in carriers compared to matched controls. The exact mechanism of action of these variants remains to be fully determined although the distribution of truncating variants throughout the *MYH7* gene would support nonsense mediated decay and haploinsufficiency. The large number of variants clustering around one splice region is particularly intriguing given that the most common of these, c.732+1G>A, does not appear to be a founder mutation. More research will be required to establish why variants in this specific location are particularly associated with LVNC.

Truncating variants in two other cardiomyopathy-associated genes, *ACTN2* and *PRDM16*, also appear to be associated solely or largely with an LVNC phenotype albeit in a small proportion of cases (approximately 1% each). These observations are supported by other associations with LVNC at these loci (Table 4), e.g. the LVNC phenotype underlying 1p36 deletion syndrome that may involve *PRDM16*<sup>22</sup>. A role for *PRDM16* in DCM has also been postulated. However, missense variants detected in a small DCM cohort were at a frequency (2.3%) equivalent to the gnomAD population rate<sup>22</sup>, although a putative *de novo* truncating variant was recently described in a paediatric patient with DCM and mild features of LVNC<sup>39</sup>. Although no excess of *ACTN2* rare variants (truncating or non-truncating) have been observed in DCM or HCM cohorts<sup>18,20</sup>, two missense variants have been reported in pedigrees with complex heterogeneous phenotypes that include non-compaction (Table 4)<sup>41-43</sup>. The significant association of *ACTN2* truncating variants with LVNC described here may indicate that such loss of function variants in this gene lead to more overt presentation of LVNC.

This study has shown that prior reports of *RYR2* and *HCN4* variants with LVNC and CPVT or bradycardia, respectively, are supported by statistically significant associations in case-control cohort analysis. Based on the limited data available thus far, their role in LVNC seems to be limited to very specific variant classes in these genes. The pathogenicity of the *RYR2* exon 3 deletion has now been established in several reports (Table 4), but the deletions of two other *RYR2* exons (2 and 19) described here suggests a potentially broader role for this variant class in LVNC (although the pathogenicity of these novel variants is yet to be unambiguously established). The enrichment of missense variants in the *HCN4* transmembrane region is also consistent with previous reports describing combined non-compaction and arrhythmia phenotypes (Table 4). Although the published reports on these variant classes reveal considerable phenotypic heterogeneity, it is conceivable that such patients could present primarily with an LVNC phenotype. Detecting such variants with LVNC genetic testing panels could identify patients (or family members carrying the same variants) at risk of arrhythmogenic events (particularly the severe events associated with CPVT).

While association has been demonstrated here for both established cardiomyopathy genes and variant classes specifically associated with LVNC, no significant excess of rare variation was observed for the majority of genes sequenced in the constituent studies, similar to previous findings for HCM<sup>20</sup> and DCM<sup>18</sup>. While a lack of excess does not necessarily preclude a role in disease, it does indicate that variants in such genes are likely to be, at best, very rarely causative. Future studies with larger LVNC cohorts may be sufficiently powered to detect a significant case excess for genes more rarely involved

in the disease, especially for variant classes with proven association to other cardiomyopathies as described above. However, these results again highlight the dangers of sequencing, in the diagnostic context, broad panels of genes that include many not fully validated for the disease in question, increasing the uncertainty associated with results (more variants of unknown significance) as well as the risk of false positive results. As with other conditions, clinical genetic testing for LVNC cases should be restricted to those genes with a proven association to disease.

### *Limitations*

There are some limitations associated with the analysis described in this study. As this is a meta-analysis of 6 different LVNC cohorts, there may be minor differences in how LVNC was diagnosed between the different studies and in the inclusion or exclusion criteria for patients with other cardiac phenotypes in addition to LVNC. However, we do observe broad consistency across cohorts for the significantly associated variant classes (e.g. *MYH7* truncating variants, Table S6), despite the limited cohort sizes, indicating this is not a major confounding factor. The burden analysis here also compares sequencing data from different studies and platforms which may introduce bias when comparing cases to reference population samples. As described previously, we adjusted for expected poorer coverage in the WES data of gnomAD<sup>18</sup> and used filtering allele frequency values in gnomAD to define rarity, so to minimize any confounding effects due to population stratification. Our previous work for HCM showing strong correlation between genes validated through this rare variant burden approach<sup>18,20</sup> and those validated by the curation of published evidence<sup>17,20</sup> demonstrates the robustness of this approach for identifying the most relevant causative genes in Mendelian diseases. Future larger single-centre studies, or coordinated efforts between different centres that synchronise diagnostic criteria and sequencing methods will be valuable in confirming the gene associations described here and clarifying any role for other genes and variant classes in LVNC.

### *Conclusion*

We have demonstrated a significant association of a number of gene and variant classes with LVNC in this meta-analysis of cohort sequencing data. These findings confirm a large genetic overlap between LVNC and DCM, HCM and arrhythmogenic diseases and provide strong evidence to support the hypothesis that many LVNC cases are a variable morphological phenotype of an underlying cardiac disease. However, we have also identified a distinct genetic aetiology in a subset of LVNC cases, with variant classes such as *MYH7* truncating variants that are not associated with other cardiac conditions, and confirmed the association of *RYR2* and *HCN4* with complex non-compaction/arrhythmia phenotypes. This data suggests that LVNC is a heterogeneous condition that can be associated with cardiomyopathies, arrhythmias, other underlying cardiac and syndromic disease as well as potentially acting as an isolated and genetically distinct pathology. Our results indicate that focused genetic testing in patients that present with LVNC may distinguish between these different aetiologies, inform clinical management for patients and their relatives and help to distinguish pathological from physiological non-compaction. This study also demonstrates the power of statistically robust genetic association studies in characterising and classifying complex clinical phenotypes.



## Funding

RW received support from an Amsterdam Cardiovascular Sciences fellowship. FM is supported by a post-doctoral research fellowship from the University of Florence. CRB acknowledges the support from the Dutch Heart Foundation (CVON 2018-30 Predict 2), the Netherlands Organization for Scientific Research (VICI fellowship, 016.150.610) and Fondation Leducq. IO acknowledges support from the Italian Ministry of Health (RF-2013-02356787) and from the European Union (Horizon 2020 framework program, GA 777204 — SILICOFCM). EML acknowledges the Netherlands Organization for Scientific Research (VIDI fellowship, 91718361) and the Dutch Heart Foundation (CVON 2017-15 RESCUED). AdM and DPO'R are supported by the NIHR Biomedical Research Centre based at Imperial College Healthcare NHS Trust and Imperial College London and the Medical Research Council, UK. AdM also received support from the Academy of Medical Sciences (SGL015/1006) and the Mason Medical Research Trust. DPO'R is also funded by the British Heart Foundation (NH/17/1/32725, RG/19/6/34387). AMR, JSW, PJRB and SAC are funded by the Wellcome Trust (107469/Z/15/Z), NIHR Imperial Biomedical Research Centre, NIHR Royal Brompton Biomedical Research Unit, a Health Innovation Challenge Fund award from the Wellcome Trust and Department of Health, UK [HICF-R6-373], the British Heart Foundation (SP/10/10/28431 and RE/18/4/34215) and the Fondation Leducq [11 CVD-01]. The views expressed in this publication are those of the author(s) and not necessarily those of the NHS, the National Institute for Health Research or the Department of Health.

## Disclosures

Professor Stuart Cook is a co-founder and director of Enleofen Bio PTE LTD, a company that develops anti-IL-11 therapeutics. Enleofen Bio had no involvement in this study. James Ware and Iacopo Olivotto receive grant support and honoraria from Myokardia. Myokardia had no involvement in this study.

## References

1. Gati S, Papadakis M, Papamichael ND, Zaidi A, Sheikh N, Reed M, Sharma R, Thilaganathan B, Sharma S. Reversible de novo left ventricular trabeculations in pregnant women: implications for the diagnosis of left ventricular noncompaction in low-risk populations. *Circulation*. 2014;130:475–83.
2. Gati S, Chandra N, Bennett RL, Reed M, Kervio G, Panoulas VF, Ghani S, Sheikh N, Zaidi A, Wilson M, Wilson M, Papadakis M, Carré F, Sharma S. Increased left ventricular trabeculation in highly trained athletes: do we need more stringent criteria for the diagnosis of left ventricular non-compaction in athletes? *Heart*. 2013;99:401–8.
3. Anderson RH, Jensen B, Mohun TJ, Petersen SE, Aung N, Zemrak F, Planken RN, MacIver DH. Key Questions Relating to Left Ventricular Noncompaction Cardiomyopathy: Is the Emperor Still Wearing Any Clothes? *Can J Cardiol*. 2017;33:747–757.
4. Oechslin E, Jenni R. Nosology of Noncompaction Cardiomyopathy: The Emperor Still Wears Clothes! *Can J Cardiol*. 2017;33:701–704.
5. Hershberger RE, Morales A, Cowan J. Is Left Ventricular Noncompaction a Trait, Phenotype, or Disease? The Evidence Points to Phenotype. *Circ Cardiovasc Genet*. 2017;10.
6. Maron BJ, Towbin JA, Thiene G, Antzelevitch C, Corrado D, Arnett D, Moss AJ, Seidman CE, Young JB, American Heart Association, Council on Clinical Cardiology HF and TC, Quality of Care and Outcomes Research and Functional Genomics and Translational Biology

- Interdisciplinary Working Groups, Council on Epidemiology and Prevention. Contemporary definitions and classification of the cardiomyopathies: an American Heart Association Scientific Statement from the Council on Clinical Cardiology, Heart Failure and Transplantation Committee; Quality of Care and Outcomes Research and Function. *Circulation*. 2006;113:1807–16.
7. Elliott P, Andersson B, Arbustini E, Bilinska Z, Cecchi F, Charron P, Dubourg O, Kühl U, Maisch B, McKenna WJ, Monserrat L, Pankuweit S, Rapezzi C, Seferovic P, Tavazzi L, Keren A. Classification of the cardiomyopathies: a position statement from the European Society Of Cardiology Working Group on Myocardial and Pericardial Diseases. *Eur Heart J*. 2008;29:270–6.
  8. Biagini E, Ragni L, Ferlito M, Pasquale F, Lofiego C, Leone O, Rocchi G, Perugini E, Zagnoni S, Branzi A, Picchio FM, Rapezzi C. Different types of cardiomyopathy associated with isolated ventricular noncompaction. *Am J Cardiol*. 2006;98:821–4.
  9. Klaassen S, Probst S, Oechslin E, Gerull B, Krings G, Schuler P, Greutmann M, Hürlimann D, Yegitbasi M, Pons L, Gramlich M, Drenckhahn J-D, Heuser A, Berger F, Jenni R, Thierfelder L. Mutations in sarcomere protein genes in left ventricular noncompaction. *Circulation*. 2008;117:2893–901.
  10. Murphy RT, Thaman R, Blanes JG, Ward D, Sevdalis E, Papa E, Kiotsekolglou A, Kiotsekolglou A, Tome MT, Pellerin D, McKenna WJ, Elliott PM. Natural history and familial characteristics of isolated left ventricular non-compaction. *Eur Heart J*. 2005;26:187–92.
  11. Miszalski-Jamka K, Jefferies JL, Mazur W, Głowacki J, Hu J, Lazar M, Gibbs RA, Liczko J, Kłyś J, Venner E, Muzny DM, Rycaj J, Białkowski J, Kluczevska E, Kalarus Z, Jhangiani S, Al-Khalidi H, Kukulski T, Lupski JR, Craigen WJ, Bainbridge MN. Novel Genetic Triggers and Genotype-Phenotype Correlations in Patients With Left Ventricular Noncompaction. *Circ Cardiovasc Genet*. 2017;10.
  12. van Waning JI, Caliskan K, Hoedemaekers YM, van Spaendonck-Zwarts KY, Baas AF, Boekholdt SM, van Melle JP, Teske AJ, Asselbergs FW, Backx APCM, du Marchie Sarvaas GJ, Dalinghaus M, Breur JMPJ, Linschoten MPM, Verlooi LA, Kardys I, Dooijes D, Lekanne Deprez RH, Ijpma AS, van den Berg MP, Hofstra RMW, van Slegtenhorst MA, Jongbloed JDH, Majoor-Krakauer D. Genetics, Clinical Features, and Long-Term Outcome of Noncompaction Cardiomyopathy. *J Am Coll Cardiol*. 2018;71:711–722.
  13. Richard P, Ader F, Roux M, Donal E, Eicher J-C, Aoutil N, Huttin O, Selton-Suty C, Coisne D, Jondeau G, Damy T, Mansencal N, Casalta A-C, Michel N, Haentjens J, Faivre L, Lavoute C, Nguyen K, Tregouët D-A, Habib G, Charron P. Targeted panel sequencing in adult patients with left ventricular non-compaction reveals a large genetic heterogeneity. *Clin Genet*. 2019;95:356–367.
  14. Sedaghat-Hamedani F, Haas J, Zhu F, Geier C, Kayvanpour E, Liss M, Lai A, Frese K, Pribe-Wolferts R, Amr A, Li DT, Samani OS, Carstensen A, Bordalo DM, Müller M, Fischer C, Shao J, Wang J, Nie M, Yuan L, Haßfeld S, Schwartz C, Zhou M, Zhou Z, Shu Y, Wang M, Huang K, Zeng Q, Cheng L, Fehlmann T, Ehlermann P, Keller A, Dieterich C, Streckfuß-Bömeke K, Liao Y, Gotthardt M, Katus HA, Meder B. Clinical genetics and outcome of left ventricular non-compaction cardiomyopathy. *Eur Heart J*. 2017;38:3449–3460.
  15. Miller EM, Hinton RB, Czosek R, Lorts A, Parrott A, Shikany AR, Ittenbach RF, Ware SM. Genetic Testing in Pediatric Left Ventricular Noncompaction. *Circ Cardiovasc Genet*. 2017;10.
  16. Strande NT, Riggs ER, Buchanan AH, Ceyhan-Birsoy O, DiStefano M, Dwight SS, Goldstein J, Ghosh R, Seifert BA, Sneddon TP, Wright MW, Milko L V, Cherry JM, Giovanni MA, Murray

- MF, O'Daniel JM, Ramos EM, Santani AB, Scott AF, Plon SE, Rehm HL, Martin CL, Berg JS. Evaluating the Clinical Validity of Gene-Disease Associations: An Evidence-Based Framework Developed by the Clinical Genome Resource. *Am J Hum Genet.* 2017;100:895–906.
17. Ingles J, Goldstein J, Thaxton C, Caleshu C, Corty EW, Crowley SB, Dougherty K, Harrison SM, McGlaughon J, Milko L V, Morales A, Seifert BA, Strande N, Thomson K, Peter van Tintelen J, Wallace K, Walsh R, Wells Q, Whiffin N, Witkowski L, Semsarian C, Ware JS, Hershberger RE, Funke B. Evaluating the Clinical Validity of Hypertrophic Cardiomyopathy Genes. *Circ Genomic Precis Med* [Internet]. 2019;12:e002460. Available from: <https://www.ahajournals.org/doi/pdf/10.1161/CIRCGEN.119.002460>
  18. Walsh R, Thomson KL, Ware JS, Funke BH, Woodley J, McGuire KJ, Mazzarotto F, Blair E, Seller A, Taylor JC, Minikel E V, Exome Aggregation Consortium, MacArthur DG, Farrall M, Cook SA, Watkins H. Reassessment of Mendelian gene pathogenicity using 7,855 cardiomyopathy cases and 60,706 reference samples. *Genet Med.* 2017;19:192–203.
  19. Mazzarotto F, Tayal U, Buchan RJ, Midwinter W, Wilk A, Whiffin N, Govind R, Mazaika E, de Marvao A, Dawes TJW, Felkin LE, Ahmad M, Theotokis PI, Edwards E, Ing AY, Thomson KL, Chan LLH, Sim D, Baksi AJ, Pantazis A, Roberts AM, Watkins H, Funke B, O'Regan DP, Olivotto I, Barton PJR, Prasad SK, Cook SA, Ware JS, Walsh R. Re-evaluating the genetic contribution of monogenic dilated cardiomyopathy. *Circulation.* 2019;
  20. Walsh R, Buchan R, Wilk A, John S, Felkin LE, Thomson KL, Chiaw TH, Loong CCW, Pua CJ, Raphael C, Prasad S, Barton PJ, Funke B, Watkins H, Ware JS, Cook SA. Defining the genetic architecture of hypertrophic cardiomyopathy: re-evaluating the role of non-sarcomeric genes. *Eur Heart J* [Internet]. 2017;38:3461–3468. Available from: <https://academic.oup.com/eurheartj/article-pdf/38/46/3461/24120868/ehw603.pdf>
  21. Probst S, Oechslin E, Schuler P, Greutmann M, Boyé P, Knirsch W, Berger F, Thierfelder L, Jenni R, Klaassen S. Sarcomere gene mutations in isolated left ventricular noncompaction cardiomyopathy do not predict clinical phenotype. *Circ Cardiovasc Genet.* 2011;4:367–74.
  22. Arndt A-K, Schafer S, Drenckhahn J-D, Sabeh MK, Plovie ER, Caliebe A, Klopocki E, Musso G, Werdich AA, Kalwa H, Heinig M, Padera RF, Wassilew K, Bluhm J, Harnack C, Martitz J, Barton PJ, Greutmann M, Berger F, Hubner N, Siebert R, Kramer H-H, Cook SA, MacRae CA, Klaassen S. Fine mapping of the 1p36 deletion syndrome identifies mutation of PRDM16 as a cause of cardiomyopathy. *Am J Hum Genet* [Internet]. 2013;93:67–77. Available from: <http://www.ncbi.nlm.nih.gov/pubmed/23768516>
  23. Walsh R, Mazzarotto F, Whiffin N, Buchan R, Midwinter W, Wilk A, Li N, Felkin L, Ingold N, Govind R, Ahmad M, Mazaika E, Allouba M, Zhang X, de Marvao A, Day SM, Ashley E, Colan SD, Michels M, Pereira AC, Jacoby D, Ho CY, Thomson KL, Watkins H, Barton PJR, Olivotto I, Cook SA, Ware JS. Quantitative approaches to variant classification increase the yield and precision of genetic testing in Mendelian diseases: the case of hypertrophic cardiomyopathy. *Genome Med.* 2019;11:5.
  24. de Marvao A, Dawes TJW, Shi W, Durighel G, Rueckert D, Cook SA, O'Regan DP. Precursors of Hypertensive Heart Phenotype Develop in Healthy Adults. *JACC Cardiovasc Imaging* [Internet]. 2015;8:1260–1269. Available from: <https://www.ncbi.nlm.nih.gov/pmc/articles/PMC4639392/>
  25. Aguib Y, Allouba M, Afify A. Genomics of Egyptian Healthy Volunteers: The EHVOL Study. *bioRxiv.* 2019;doi.org/10.1101/680520.
  26. Roberts AM, Ware JS, Herman DS, Schafer S, Baksi J, Bick AG, Buchan RJ, Walsh R, John S, Wilkinson S, Mazzarotto F, Felkin LE, Gong S, MacArthur JAL, Cunningham F, Flannick J,

- Gabriel SB, Altshuler DM, Macdonald PS, Heinig M, Keogh AM, Hayward CS, Banner NR, Pennell DJ, O'Regan DP, San TR, de Marvao A, Dawes TJW, Gulati A, Birks EJ, Yacoub MH, Radke M, Gotthardt M, Wilson JG, O'Donnell CJ, Prasad SK, Barton PJR, Fatkin D, Hubner N, Seidman JG, Seidman CE, Cook S a. Integrated allelic, transcriptional, and phenomic dissection of the cardiac effects of titin truncations in health and disease. *Sci Transl Med*. 2015;7:270ra6.
27. Hoedemaekers YM, Caliskan K, Michels M, Frohn-Mulder I, van der Smagt JJ, Phefferkorn JE, Wessels MW, ten Cate FJ, Sijbrands EJG, Dooijes D, Majoor-Krakauer DF. The importance of genetic counseling, DNA diagnostics, and cardiologic family screening in left ventricular noncompaction cardiomyopathy. *Circ Cardiovasc Genet*. 2010;3:232–9.
  28. Yeo G, Burge CB. Maximum entropy modeling of short sequence motifs with applications to RNA splicing signals. *J Comput Biol*. 2004;11:377–94.
  29. Scheffold T, Waldmüller S, Borisov K. A case of familial hypertrophic cardiomyopathy emphasizes the importance of parallel screening of multiple disease genes. *Clin Res Cardiol*. 2011;100:627–8.
  30. Bhuiyan ZA, van den Berg MP, van Tintelen JP, Bink-Boelkens MTE, Wiesfeld ACP, Alders M, Postma A V, van Langen I, Mannens MMAM, Wilde AAM. Expanding spectrum of human RYR2-related disease: new electrocardiographic, structural, and genetic features. *Circulation*. 2007;116:1569–76.
  31. Medeiros-Domingo A, Bhuiyan ZA, Tester DJ, Hofman N, Bikker H, van Tintelen JP, Mannens MMAM, Wilde AAM, Ackerman MJ. The RYR2-encoded ryanodine receptor/calcium release channel in patients diagnosed previously with either catecholaminergic polymorphic ventricular tachycardia or genotype negative, exercise-induced long QT syndrome: a comprehensive open reading frame muta. *J Am Coll Cardiol*. 2009;54:2065–74.
  32. Marjamaa A, Laitinen-Forsblom P, Lahtinen AM, Viitasalo M, Toivonen L, Kontula K, Swan H. Search for cardiac calcium cycling gene mutations in familial ventricular arrhythmias resembling catecholaminergic polymorphic ventricular tachycardia. *BMC Med Genet*. 2009;10:12.
  33. Szentpáli Z, Szili-Torok T, Caliskan K. Primary electrical disorder or primary cardiomyopathy? A case with a unique association of noncompaction cardiomyopathy and catecholaminergic polymorphic ventricular tachycardia caused by ryanodine receptor mutation. *Circulation*. 2013;127:1165–6.
  34. Ohno S, Omura M, Kawamura M, Kimura H, Itoh H, Makiyama T, Ushinohama H, Makita N, Horie M. Exon 3 deletion of RYR2 encoding cardiac ryanodine receptor is associated with left ventricular non-compaction. *Europace*. 2014;16:1646–54.
  35. Campbell MJ, Czosek RJ, Hinton RB, Miller EM. Exon 3 deletion of ryanodine receptor causes left ventricular noncompaction, worsening catecholaminergic polymorphic ventricular tachycardia, and sudden cardiac arrest. *Am J Med Genet A*. 2015;167A:2197–200.
  36. Collins RL, Brand H, Karczewski K et al. An open resource of structural variation for medical and population genetics. *bioRxiv*. 2019;doi.org/10.1101/578674.
  37. de Leeuw N, Houge G. Loss of PRDM16 is unlikely to cause cardiomyopathy in 1p36 deletion syndrome. *Am J Hum Genet*. 2014;94:153–4.
  38. Arndt A-K, Macrae CA, Klaassen S. Reponse to De Leeuw and Houge. *Am J Hum Genet*. 2014;94:154–5.

39. Long PA, Evans JM, Olson TM. Diagnostic Yield of Whole Exome Sequencing in Pediatric Dilated Cardiomyopathy. *J Cardiovasc Dev Dis* [Internet]. 2017;4. Available from: <https://www.ncbi.nlm.nih.gov/pmc/articles/PMC5715713/>
40. Delplancq G, Tarris G, Vitobello A, Nambot S, Sorlin A, Philippe C, Carmignac V, Duffourd Y, Denis C, Eicher JC, Chevarin M, Millat G, Khallouk B, Rousseau T, Falcon-Eicher S, Vasiljevic A, Harizay FT, Thauvin-Robinet C, Faivre L, Kuentz P. Cardiomyopathy due to PRDM16 mutation: First description of a fetal presentation, with possible modifier genes. *Am J Med Genet C Semin Med Genet*. 2020;
41. Girolami F, Iascone M, Tomberli B, Bardi S, Benelli M, Marseglia G, Pescucci C, Pezzoli L, Sana ME, Basso C, Marziliano N, Merlini PA, Fornaro A, Cecchi F, Torricelli F, Olivotto I. Novel  $\alpha$ -actinin 2 variant associated with familial hypertrophic cardiomyopathy and juvenile atrial arrhythmias: a massively parallel sequencing study. *Circ Cardiovasc Genet*. 2014;7:741–50.
42. Chiu C, Bagnall RD, Ingles J, Yeates L, Kennerson M, Donald JA, Jormakka M, Lind JM, Semsarian C. Mutations in Alpha-Actinin-2 Cause Hypertrophic Cardiomyopathy. *J Am Coll Cardiol*. 2010;55:1127–1135.
43. Bagnall RD, Molloy LK, Kalman JM, Semsarian C. Exome sequencing identifies a mutation in the ACTN2 gene in a family with idiopathic ventricular fibrillation, left ventricular noncompaction, and sudden death. *BMC Med Genet*. 2014;15:99.
44. Milano A, Vermeer AMC, Lodder EM, Barc J, Verkerk AO, Postma A V, van der Bilt IAC, Baars MJH, van Haelst PL, Caliskan K, Hoedemaekers YM, Le Scouarnec S, Redon R, Pinto YM, Christiaans I, Wilde AA, Bezzina CR. HCN4 mutations in multiple families with bradycardia and left ventricular noncompaction cardiomyopathy. *J Am Coll Cardiol*. 2014;64:745–56.
45. Schweizer PA, Schröter J, Greiner S, Haas J, Yampolsky P, Mereles D, Buss SJ, Seyler C, Bruehl C, Draguhn A, Koenen M, Meder B, Katus HA, Thomas D. The symptom complex of familial sinus node dysfunction and myocardial noncompaction is associated with mutations in the HCN4 channel. *J Am Coll Cardiol*. 2014;64:757–67.
46. Millat G, Janin A, de Tauriac O, Roux A, Dauphin C. HCN4 mutation as a molecular explanation on patients with bradycardia and non-compaction cardiomyopathy. *Eur J Med Genet*. 2015;58:439–42.
47. Vermeer AMC, Lodder EM, Thomas D, Duijkers FAM, Marcelis C, van Gorselen EOF, Fortner P, Buss SJ, Mereles D, Katus HA, Wilde AAM, Bezzina CR, Boekholdt SM, Schweizer PA, Christiaans I. Dilatation of the Aorta Ascendens Forms Part of the Clinical Spectrum of HCN4 Mutations. *J Am Coll Cardiol*. 2016;67:2313–2315.
48. Hanania HL, Regalado ES, Guo D-C, Xu L, Demo E, Sallee D, Milewicz DM. Do HCN4 Variants Predispose to Thoracic Aortic Aneurysms and Dissections? *Circ Genomic Precis Med*. 2019;12:e002626.
49. Luxán G, Casanova JC, Martínez-Poveda B, Prados B, D’Amato G, MacGrogan D, Gonzalez-Rajal A, Dobarro D, Torroja C, Martinez F, Izquierdo-García JL, Fernández-Friera L, Sabater-Molina M, Kong Y-Y, Pizarro G, Ibañez B, Medrano C, García-Pavía P, Gimeno JR, Monserrat L, Jiménez-Borreguero LJ, de la Pompa JL. Mutations in the NOTCH pathway regulator MIB1 cause left ventricular noncompaction cardiomyopathy. *Nat Med*. 2013;19:193–201.
50. van Waning JI, Caliskan K, Michels M, Schinkel AFL, Hirsch A, Dalinghaus M, Hoedemaekers YM, Wessels MW, IJpma AS, Hofstra RMW, van Slegtenhorst MA, Majoor-Krakauer D. Cardiac Phenotypes, Genetics, and Risks in Familial Noncompaction Cardiomyopathy. *J Am Coll Cardiol*. 2019;73:1601–1611.