

1 **Title: Prevalence, Characteristics, and Associated Factors of Workplace Violence Against**  
2 **Healthcare Professionals in India: A Systematic Review and Meta-analysis**

3  
4 **Authors' names and affiliations:**

5 1. **Md Mahbub Hossain\*** (Corresponding author)

6 Affiliation: Department of Health Promotion and Community Health Sciences, School of Public  
7 Health, Texas A&M University, College Station, TX 77843, USA.

8 Email: [mhossain@tamu.edu](mailto:mhossain@tamu.edu)

9 2. **Rachit Sharma**

10 Affiliation: The INCLEN Trust International, New Delhi, India.

11 Email: [dr Rachit Sharma 09@gmail.com](mailto:dr Rachit Sharma 09@gmail.com)

12 3. **Samia Tasnim**

13 Affiliation: Department of Health Promotion and Community Health Sciences, School of Public  
14 Health, Texas A&M University, College Station, TX 77843, USA.

15 Email: [tasnim@tamu.edu](mailto:tasnim@tamu.edu)

16 4. **Gulam Muhammed Al Kibria**

17 Affiliation: Department of Epidemiology and Public Health, School of Medicine, University of  
18 Maryland, Baltimore, MD 21201, USA

19 Email: [gkibria1@outlook.com](mailto:gkibria1@outlook.com)

20 5. **Abida Sultana**

21 Affiliation: Gazi Medical College, Mojid Sarani, Khulna 09000, Bangladesh

22 Email: [abidamona21@gmail.com](mailto:abidamona21@gmail.com)

23 6. **Tanjul Saxena**

24 Affiliation: The IIHMR University, Jaipur, Rajasthan 302029, India

25 Email: [tanjul@iihmr.edu.in](mailto:tanjul@iihmr.edu.in)

26 **Acknowledgements: None.**

27

28 **Authors' contributions:** MMH conceptualized the review. MMH, RS, ST, and GMAK conducted  
29 the literature review and data extraction. MMH conducted the statistical analysis. MMH and AS  
30 conducted the narrative synthesis and interpretation. MMH drafted the first version of the  
31 manuscript, which was critically revised by TS and edited by MMH. TS supervised the  
32 methodological aspects. All authors reviewed, edited, and approved the submitted version of the  
33 manuscript.

34

35 **Conflict of interest:** None.

36 **Funding:** No funding was received at any stage of preparing this manuscript.

37 **Ethical issues:** No ethical approval was required as it is a secondary synthesis of published studies.

38 **Word count:** 5638 (excluding tables and references)

39 **Keywords:** Workplace Violence; Occupational Safety; Health Policy; Health Workforce; India

40

41

42

43

44

45

46

47

48

49

## 50 **Abstract**

51 **Background:** Workplace violence (WPV) against doctors, nurses, and other healthcare  
52 professionals is a growing public health concern affecting health systems in low- and middle-  
53 income countries. In India, incidents of WPV against health workforce have become common in  
54 recent years. However, there is no synthesized evidence on the nationwide burden of WPV in  
55 healthcare. This study aims to systematically evaluate the current evidence on the prevalence,  
56 characteristics, and associated factors of WPV against healthcare professionals in India.

57 **Methods:** We systematically searched seven major databases and additional sources to retrieved  
58 published literature on WPV in India. We included empirical studies without any time  
59 restriction, which reported the prevalence of WPV against healthcare professionals in India.  
60 Following data extraction, we estimated the pooled prevalence of WPV using random-effects  
61 model in meta-analysis. The characteristics and associated factors of WPV were narratively  
62 synthesized from these empirical studies.

63 **Results:** Among 1065 articles retrieved from multiple sources, 15 studies met our inclusion and  
64 exclusion criteria. The pooled prevalence of WPV among 2849 participants in those 15 studies  
65 was 63% (95% confidence interval [CI], 54%-72%). In the subgroup analyses, the pooled  
66 prevalence for male and female was 64% (95% CI, 51%-78%) and 54% (95% CI, 47%-62%)  
67 respectively. Moreover, pooled prevalence in 12-months and lifetime was 55% (95% CI, 43%-  
68 67%) and 69% (95% CI, 61%-78%) respectively. Among the participants, the prevalence of  
69 verbal violence (52%; 95% CI, 45%-60%) was higher than physical violence (8%; 95% CI, 5%-  
70 11%). The emergency department was a common location of WPV, whereas the patients'  
71 attendants were perpetrators in most studies. Major factors associated with WPV included  
72 ineffective patient-provider communication, less experience of the healthcare professionals,  
73 overcrowding, shortage of resources, long waiting hours, lack of security measures,  
74 dissatisfaction about health services, high cost of care, the negative role of media, and other  
75 socio-behavioral problems among the patients and healthcare professionals.

76 **Conclusion:** WPV is highly prevalent among healthcare professionals in India. Critical  
77 challenges within the healthcare and social context necessitate further research, better  
78 policymaking, and multipronged interventions to address the same and prevent WPV against  
79 healthcare professionals in India.

## 80 **1. Background**

81 Workplace violence (WPV) against healthcare professionals is a widespread and persistent public  
82 health concern around the world.<sup>1</sup> National Institute for Occupational Safety and Health (NIOSH)  
83 at Centers for Disease Control and Prevention (CDC) defined WPV as “violent acts (including  
84 physical assaults and threats of assaults) directed toward persons at work or on duty.”<sup>2</sup> WPV  
85 includes but not limits into abusive behavior toward authority, verbal abuse, threatening, physical  
86 assault, sexual harassment, and racial harassment.<sup>3</sup> According to the Occupational Safety and  
87 Health Administration (OSHA), nearly 75% of 25,000 workplace assaults were reported in the  
88 health care and social service settings every year.<sup>4</sup> They have also found that workers in health  
89 care settings are four times more likely to be harassed at work than the workers in private industry.<sup>4</sup>  
90 WPV is reported as one of the major causes of death at the workplace among healthcare  
91 professionals.<sup>5</sup> Worldwide, 8% to 38% of health workers experience some form of violence at  
92 some point in their careers.<sup>1</sup> In addition, the prevalence of physical aggression ranges from 35-  
93 71% and of non-physical violence ranges from 38-90%.<sup>6</sup> These statistics may not reflect the real  
94 magnitude of the dismal situation because WPV workplace is often under-reported. A wide range  
95 of socio-cultural factors may contribute to such under-reporting, which include perceiving WPV  
96 as a commonly occurring incident among healthcare professionals, feeling discouraged due to  
97 complex reporting systems, or a lack of interest of the hospital administration who primarily  
98 emphasizes on organizational outcomes rather than the safety and wellbeing of the health  
99 workforce.<sup>7,8</sup> Despite these issues related to under-reporting, several studies have reported how  
100 WPV has impacted the physical and mental health of the healthcare professionals,<sup>9</sup> their attitude  
101 to the profession and related responsibilities,<sup>10</sup> communication with patients and peers in the  
102 workplace,<sup>11</sup> delivery of health services in high-risk environment,<sup>12</sup> quality of care,<sup>13,14</sup> and health  
103 systems performances.<sup>4,15</sup>

104 Although WPV is a global health problem, recent studies have reported a higher magnitude of  
105 WPV in low and middle-income countries (LMICs).<sup>3,16-18</sup> Critical factors including severe  
106 scarcity of human resources for health,<sup>19</sup> overworking and burnout in overcrowded hospitals,<sup>20</sup>  
107 lack of adequate facilities and logistics to deliver health services,<sup>19,21</sup> pre-existing socio-  
108 behavioral problems of the patients and healthcare providers,<sup>16,19,22</sup> high cost of availing health  
109 services,<sup>23,24</sup> lack of appropriate security measures,<sup>25,26</sup> and many more, are found to be

110 associated with WPV in resource-constrained contexts. A high burden WPV is reported in China  
111 where about one-third of the doctors have faced some violence and thousands have been reported  
112 to be assaulted viciously.<sup>24,27</sup> Similar incidents of violent outrage towards doctors have been  
113 reported from primary to tertiary care services in Bangladesh,<sup>28</sup> Nepal,<sup>29</sup> Pakistan,<sup>25,30</sup> and  
114 Myanmar.<sup>31</sup> As a consequence of these violent outbursts, many health care professionals were  
115 brutally injured, and few even lost their lives.<sup>32</sup>

116 India has a high burden of WPV similar to other LMICs. The Indian Medical Association (IMA)  
117 has reported that 75% of doctors face either physical or verbal abuse at some point of their  
118 career.<sup>33,34</sup> Being one of the most densely populated countries with a severe paucity of resources  
119 to meet the ever-increasing burden of diseases at the population-level, the incidents of WPV is  
120 increasing in India over the past few years.<sup>33,35</sup> In 2017, after four separate incidents of violence  
121 against junior doctors in government hospitals in Mumbai, India, more than 2000 doctors from  
122 17 government hospitals went on strike demanding safety at workplace.<sup>36</sup> In 2019, more than a  
123 thousand doctors in West Bengal, India have undergone a 7-day strike after several violent  
124 attacks on doctors at their workplaces.<sup>37</sup> This regional strike received broader public attention  
125 when doctors all over India held a nationwide strike ceasing all non-emergency medical services  
126 demanding workplace safety.<sup>38</sup> Such outburst of the medical community highlights the severity  
127 of this problem in the context of India.

128 Despite these ongoing discourses on WPV against healthcare professionals in India, there is a lack  
129 of consolidated evidence to examine the actual magnitude of this critical problem within the health  
130 system of India. Earlier studies have reported incidents of WPV in different hospitals,<sup>39-41</sup> but there  
131 is no systematic review reporting the nationwide prevalence and characteristics of WPV in India.  
132 In addition, it is essential to evaluate the factors associated with WPV to develop preventive and  
133 protective measures addressing this complex public health problem. The objective of this article is  
134 to systematically review and meta-analyze the prevalence, characteristics, and factors associated  
135 with WPV against healthcare professionals in India.

136

137

138

139 **2. Methods**

140 ***2.1 Conducting The Review***

141 In this systematic review, we aimed to evaluate the empirical studies and estimate the pooled  
142 prevalence of WPV among healthcare professionals in India. Further, we evaluated the  
143 prevalence of two major types of WPV, which is verbal and physical violence separately. Earlier  
144 studies conducted in similar socio-economic contexts have shown varying characteristics of  
145 WPV provide better insights on the magnitude and impacts of the problem.<sup>3,16,19,25,28,29</sup> These  
146 characteristics include the location, time, frequency, and magnitude of WPV; impacts of WPV  
147 on the victims; perpetrators of WPV and measures following incidents of WPV. We examined  
148 the characteristics of WPV within a broader scope to better understand the scenario in the  
149 healthcare and societal context of India. Lastly, we evaluated factors associated with WPV as  
150 reported by the participants in these empirical studies to synthesize the evidence on the  
151 aggravating factors of WPV against healthcare professionals in India. The protocol for this  
152 review is registered in the International Prospective Register for Systematic Reviews-  
153 PROSPERO (CRD42019147723).

154 ***2.2 Search Strategy***

155 This systematic review was conducted following the Preferred Reporting Items for Systematic  
156 Reviews and Meta-Analysis (PRISMA) guidelines.<sup>42</sup> Studies indexed in MEDLINE, EMBASE,  
157 CINAHL, PsycINFO, Health Policy Reference Center, ERIC, and Scopus databases were  
158 searched using specific keywords as shown in Table 1. In this searching process, the keywords  
159 were used both as subject headings and general keywords with appropriate Boolean operators.  
160 No time restriction was imposed in the literature searching process. Three authors developed the  
161 search strategy and working protocol for this review prior to conducting this review. All the  
162 databases were searched on August 10, 2019, for the last time.

163

164

165

166

167 **Table 1: Keywords For Database Searching**

Violen* or aggressi* or assault or abus* or hostil* or attack* or homicid* or bull* or threat*	AND	doctors or physicians or nurses or surgeons or therapists or dentists or medical professionals or nursing professionals or health workers or healthcare professionals	AND	prevalence or incidence or epidemiology or frequency or occurrence or predictors or correlates or factors or determinants	AND	India
--	-----	---	-----	---	-----	-------

168

169 Further, we communicated with experts, healthcare researchers, and practitioners working in  
 170 India to retrieve any studies as per their knowledge in the field. We also examined the citing  
 171 articles of the earlier studies on this topic and the references of studies included in this review.  
 172 Furthermore, we communicated with the authors of included studies to clarify doubts and  
 173 retrieve missing information in the published articles. In this way, we attempted to retrieve  
 174 potential studies from all these additional sources to ensure the recruited literature is inclusive  
 175 and extensive enough to synthesize adequate evidence on WPV against health workforce in  
 176 India.

177 **2.3 Literature Screening, Inclusion and Exclusion Criteria**

178 Citations retrieved through searching the databases and additional sources were uploaded to  
 179 RefWorks<sup>43</sup> and Rayyan QCRI<sup>44</sup> tools for reference management and screening the citations  
 180 respectively. Two authors independently conducted the screening process based on the pre-  
 181 specified inclusion and exclusion criteria.

182 We included articles in this review if they were:

- 183 a) empirical in nature,
- 184 b) published in a peer-reviewed journal,

- 185 c) conducted among any of the health professional groups working in India,  
186 d) conducted in quantitative or mixed methods reporting at least the prevalence of WPV in the  
187 given population as assessing the same was the primary objective of this review,  
188 e) studies published in the English language only.

189 The articles were excluded from this systematic review if they were:

- 190 a) not empirical studies in nature (e.g., editorials, letters, opinions, and reviews),  
191 b) conducted outside India,  
192 c) did not include healthcare professionals as study participants  
193 d) were not published in a peer-reviewed journal,  
194 e) did not report the prevalence of WPV among the health professionals,  
195 f) published in languages other than English.

196 At the end of blinded primary screening by two authors, conflicts on recruitment of citations  
197 were discussed in the presence of a third author to reach a consensus.

#### 198 ***2.4 Data Extraction and Synthesis***

199 Two authors independently re-evaluated the full texts of the finally recruited articles and  
200 extracted data in a pre-designed codebook for data extraction. This codebook had following  
201 domains to extract data: a) location and time of the study, b) types of instruments used to assess  
202 WPV, c) recruitment sites and strategies, d) prevalence of WPV in the study, e) any  
203 characteristics of WPV reported by the participants, f) associated factors of WPV.

204 The extracted data were further reviewed by two more authors to identify and resolve  
205 inconsistencies. Further, we included the key findings extracted from individual studies and  
206 organized the same in a tabulated format. Quantitative data on the prevalence of WPV were  
207 considered for meta-analysis, and remaining data on characteristics and associated factors of  
208 WPV were used for narrative synthesis.

209



## 210 ***2.5 Statistical Analysis***

211 To estimate the pooled prevalence of WPV in the meta-analysis, we used the Der-Simonian and  
212 Laird's random model with 95% confidence interval (CI).<sup>45</sup> Stata Version 15 software  
213 (StataCorp, College Station, TX) was used for statistical analyses.<sup>46</sup> Prevalence rates were  
214 obtained from all the recruited studies with priority to the overall prevalence of WPV followed  
215 by itemized prevalence for different types of WPV among the study participants. In cases of  
216 absent values for overall prevalence, the highest reported rate of WPV in the sub-groups was  
217 considered in the analysis. Further, positive cases were divided by the total number of sample in  
218 intercept-only random effects logistic regression model fitted to obtain the pooled estimate of  
219 prevalence. To estimate the prevalence in the context of different variables, we conducted  
220 subgroup analysis for gender, sample size below and above 200, publication before and after  
221 2016, prevalence in last 12 months and without any time restriction or lifetime, and major types  
222 of WPV. To estimate the pooled prevalence across studies, "metaprop\_one" program in Stata  
223 15.0 (College Station, TX) was used, which provides better estimates without excluding 0% or  
224 100% proportions.<sup>47</sup> Moreover, this process reports study-specific and pooled confidence  
225 intervals within admissible values, I2 statistics which facilitates interpreting the heterogeneity of  
226 the studies, and P-value from Q-statistics to evaluate the between-study variability.

## 227 ***2.6 Quality Assessment of the Included Studies***

228 In this systematic review, we used the National Heart, Lung, and Blood Institute (NHLBI) Study  
229 Quality Assessment Tool for observational cohort and cross-sectional studies to assess the  
230 methodological quality of the included studies.<sup>48</sup> The NHLBI tool has 14 items which are used in  
231 previous systematic reviews of observational studies.<sup>49,50</sup> Each item is assessed through a  
232 question where the possible answers are yes, no, or other (cannot determine, not applicable, or  
233 not reported). The NHLBI tool enables to score and weigh the evidence to rate the overall quality  
234 of each study as 'good', 'fair', or 'poor' indicating the validity of the findings in the respective  
235 study.

236

237

238

239

240

241

Identification

247

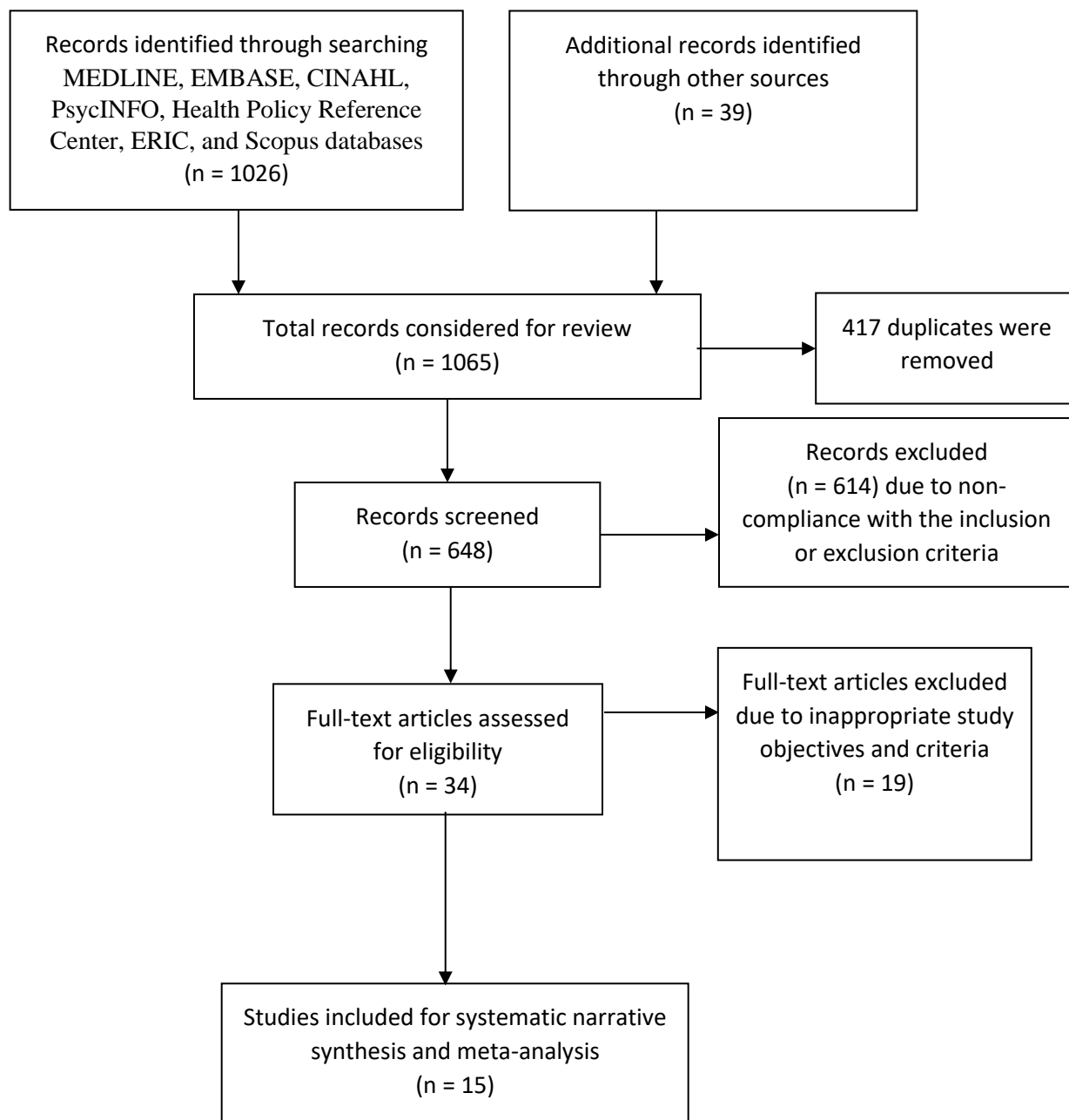
Screening

253

Eligibility

259

Included



265 **Figure 1: Flow Diagram of the Systematic Review Process**

266

267

## 268 **3. Results**

269 A total of 1026 articles were found through searching seven databases. Moreover, we found 39  
270 additional articles from additional sources (Figure 1). Therefore, the total number of articles  
271 primarily considered in this review was 1065. Further, we removed 417 duplicate articles and  
272 evaluated the titles and abstracts of the remaining 648 articles based on the inclusion or  
273 exclusion criteria, as described earlier. At the end of this scrutiny, 614 articles that did not meet  
274 our selection criteria were filtered out. Further, we evaluated the full texts of 34 remaining  
275 articles, among which 19 were excluded due to mismatched study objectives and characteristics  
276 conflicting with this review. Finally, we found 15 full-text articles which fulfilled all the criteria  
277 for this systematic review (Table 2).

### 278 **3.1 Characteristics of the Recruited Studies**

279 Among the included articles, earlier studies were conducted in Tamil Nadu (n = 1)<sup>51</sup> and  
280 Karnataka (n = 1)<sup>52</sup> in 2005 and 2006 respectively. Most of the studies (n = 13 out of 15) were  
281 conducted after 2010 in different states of India including Delhi (n = 3),<sup>39-41</sup> Manipur (n = 2),<sup>53,54</sup>  
282 Uttar Pradesh (n = 2),<sup>55,56</sup> Maharashtra (n = 1),<sup>57</sup> Haryana (n = 1),<sup>58</sup> Gujarat (n = 1),<sup>59</sup> and Punjab  
283 (n = 1).<sup>60</sup> The quality evaluation using the NHLBI tool found no studies with poor quality, three  
284 studies with fair quality,<sup>39,51,57</sup> and remaining studies (n = 12) with good quality.<sup>40,41,61,62,52-56,58-60</sup>

285 Most of the studies (n = 14) recruited study participants from medical institutions in urban areas  
286 whereas only one study by Pund et al. recruited from multiple locations in a district where  
287 65.85% participants were working in rural areas.<sup>57</sup> All these studies were cross-sectional in  
288 nature and conducted using self-administered pre-tested questionnaires with different  
289 demographic and violence-related variables. While most of the studies (n = 14) reported the  
290 magnitude of violence in percentage, one study by Balamurugan reported the findings using  
291 violence score among the victims.<sup>52</sup> Five studies particularly used adopted questionnaire from  
292 joint workforce violence instrument developed by International Labor Organization (ILO),  
293 International Council of Nurses (ICN), World Health Organization (WHO), and Public Services  
294 International (PSI).<sup>39,54,55,58,60</sup>

295 Fifteen studies recruited in this study had a varying number of study participants ranging from 82  
296 to 310, totaling 2849 participants. Most of the studies (n = 13) had a majority of male

297 participants except three studies,<sup>52,55,60</sup> which comprised nursing professionals. All the remaining  
298 studies (n = 12) had participants including resident physicians, intern physicians, and other  
299 cadres of healthcare professionals.

300

301

302 *Table 2: Summary of the Studies Included in this Review*

Source	Study place and time (if reported)	Types, instruments, and recruitment sites of the study	Sample size and characteristics	Prevalence of WPV	Characteristics of WPV	Factors associated with WPV
Bairy et al. (2007) <sup>51</sup>	Tamil Nadu; 2005	Cross-sectional study using a questionnaire with six items pertaining to bullying; conducted in a Govt. medical college	n = 174; male 58.62%, female 41.38%; junior doctors 33.9%, residents 66.1%; 72.41% were aged below 30 years	51.15% (bullying/verbal)	<ul style="list-style-type: none"> <li>• Medical and para-clinical professionals were perpetrators in 30.34% and 69.66% cases respectively</li> <li>• 59.55% victims reported that bullying eroded their self-esteem and professional confidence</li> <li>• 95.6% victims did not complain about incidents; 22.47% did not know how to complain; and 21.35% were</li> </ul>	<ul style="list-style-type: none"> <li>• Junior doctors (89.8%) and those who were aged below 30 years (57.94%) experienced higher bullying in workplaces</li> </ul>

					afraid of the consequences	
Balamurugan et al. (2012) <sup>52</sup>	Bangalore, Karnataka; 2006	Cross-sectional study with a pre-tested questionnaire; conducted in a mental health hospital	N = 179; male = 7.8%, female = 92.2%; nursing professionals	87.2% (overall)	<ul style="list-style-type: none"> <li>• 57% and 30.2% respondents experienced mild and moderate violence respectively</li> <li>• Mean verbal violence score was 5.4 (SD 4.61) compared to physical violence score 1.55 (SD 1.29)</li> </ul>	<ul style="list-style-type: none"> <li>• Female participants scored higher violence than male colleagues</li> <li>• Younger participants scored higher in zero to mild violence categories</li> <li>• Participants with more years of experience in the profession and in the specific specialty generally had lesser violence scores</li> </ul>
Ori J. et al. (2014) <sup>53</sup>	Imphal, Manipur; 2011	Cross-sectional study using self-administered questionnaire; conducted in a medical institution in the capital city	n = 230; male 62.6%, female 37.4%; junior doctors enrolled in postgraduate programs	78.26% (overall); 71.3% (verbal), 5.22% (physical)	<ul style="list-style-type: none"> <li>• Most (48.88%) incidents occurred in emergency services</li> <li>• 38.89% participants reported experiencing violence for three or more times</li> <li>• Attendants of the patients</li> </ul>	<ul style="list-style-type: none"> <li>• Male doctors experienced more violence than female peers (p&lt;0.001)</li> <li>• Communication difficulties among patients and doctors</li> <li>• Shortage of resources</li> <li>• Excessive workload</li> <li>• Lack of awareness</li> </ul>

					were involved in 73.89% cases of violence	<ul style="list-style-type: none"> <li>• Less security, and</li> <li>• Lack of adequate administrative measures</li> </ul>
Anand T. et al. (2016) <sup>40</sup>	Delhi; 2014	Cross-sectional study using self-administered semi-structured questionnaire; conducted in tertiary care hospital	n = 169; junior residents 78.1%, senior residents 21.9%; male 61%; female 38.5%; mean age was 28.6 (SD 4.2) years	40.8% (overall, 12 months); 30.77% (verbal), 4.73% (physical)	<ul style="list-style-type: none"> <li>• 78.3% incidents occurred in the casualty or emergency department</li> <li>• Patients and their relatives were the perpetrators in 73.9% cases; Co-workers or hospital staffs were perpetrators in 26.1% cases</li> <li>• The victims of violence reported fear (59%), sadness (44.3%), headache (31.1%), frustration, irritability, fatigue, and low esteem (24.6%)</li> </ul>	<ul style="list-style-type: none"> <li>• Poor communication skills among the physicians (81.1%)</li> <li>• Poor conflict resolution skills (56.8%)</li> <li>• Overcrowding of the hospitals (77.5%)</li> <li>• Shortage of resources (73.4%)</li> <li>• Poor working conditions (72.2%)</li> <li>• Delayed services or dissatisfaction among the patients (14.5%)</li> </ul>

					<ul style="list-style-type: none"> <li>• More than 33% victims reported the incidence to the higher authority</li> </ul>	
Kumar M. et al. (2016) <sup>41</sup>	Delhi; 2016	Cross-sectional study using self-administered questionnaire; conducted in a tertiary care hospital	n = 151; intern physicians with 6 or more months of experience, junior residents, senior residents; male 61%, female 59%	47.02% (overall, 12 months); 41.06% (verbal), 3.97% (physical)	<ul style="list-style-type: none"> <li>• Most incidents occurred in the Department of Gynecology and Obstetrics (39.4%) followed by Surgery (29.6%) and Medicine (26.8%)</li> <li>• 79.3% victims reported the incidents; only in 14.6% cases the head of the unit took further steps; no police inquiry was made as reported by the participants</li> </ul>	<ul style="list-style-type: none"> <li>• Young doctors reported physical violence more frequently (p=0.012)</li> <li>• Long waiting hours (73.5%)</li> <li>• Delays in care (45.7%)</li> <li>• Violation of visiting hours (41.7%)</li> </ul>
Pund SB. et al. (2017) <sup>57</sup>	Maharashtra; 2015	Cross-sectional study using pre-designed	n = 82; doctors and health professionals from different	78.05% (overall, lifetime) 63.41%	<ul style="list-style-type: none"> <li>• Doctors in outpatient department experienced</li> </ul>	<ul style="list-style-type: none"> <li>• Young doctors with less professional experience were</li> </ul>



		and pre-tested questionnaire; conducted in multiple locations (public and private hospitals in both urban and rural places of the district)	cadres were recruited; male 87.8%, female 12.2%; area of practice was rural in 65.85% and urban in 34.15% participants	(overall, 12 months); 57.32% (verbal), 4.88% (physical) in 12 months	<p>more violence (OR 4.77, 95% CI: 1.45-15.63)</p> <ul style="list-style-type: none"> <li>• Extortion of money and intentional destruction of property was reported in 21.95% and 11.27% cases respectively</li> <li>• Respondents felt a lack of safety in the profession (71.95%), lack of security in the workplace (45.12%)</li> <li>• Most participants (89.02%) found the existing legal and administrative measures as inadequate</li> </ul>	<p>more likely to experience violence (OR 3.67, 95% CI: 1.28-10.47)</p> <ul style="list-style-type: none"> <li>• Poor communication (32.93%)</li> <li>• Lack of trust in doctors (8.54%)</li> <li>• Poor infrastructure (8.54%)</li> </ul>
Vanlaldusaki et al. (2018) <sup>54</sup>	Manipur; 2017	Cross-sectional study using	n = 310; male 56.45%, female	50.3% (overall, 12 months);	<ul style="list-style-type: none"> <li>• 8.8% participants reported</li> </ul>	<ul style="list-style-type: none"> <li>• Aggressive patient behavior (26.4%)</li> </ul>

		adopted questionnaire from ILO/ ICN/ WHO/ PSI workplace violence instrument; conducted in an urban medical institution	43.55%; postgraduate doctors 72.9%, junior doctors 20.96%, and intern doctors 6.13%	verbal 47.4%, physical 2.9%)	<p>continuous exposure to WPV</p> <ul style="list-style-type: none"> <li>• Victims experienced bad memories of the attacks (48.3%, avoidance of the issue (44.9%), and being concerned about safety and security (46.9%)</li> <li>• Only 25.9% victims received support from colleagues whereas 59.2% cases of verbal abuse and all cases involving physical violence were never investigated</li> </ul>	<ul style="list-style-type: none"> <li>• Gaps in communication (18%)</li> <li>• Inadequate infrastructure (13.1%)</li> <li>• Overcrowding (8.7%)</li> <li>• The attitude of healthcare professionals (8.4%)</li> </ul>
Mishra S. et al. (2018) <sup>55</sup>	Uttar Pradesh; 2017-18	Cross-sectional study using	n = 141; staff nurses with at least six	75.9% (overall)	<ul style="list-style-type: none"> <li>• Relatives of the patients were</li> </ul>	<ul style="list-style-type: none"> <li>• Young nurses aged below 30 years,</li> </ul>

		adopted questionnaire from ILO/ ICN/ WHO/ PSI workplace violence instrument; conducted in an urban tertiary care private hospital	months of professional experience, male 18.4%, female 81.6%		perpetrators in 97.2% cases <ul style="list-style-type: none"> <li>• Only 19.6% reported to the senior management</li> <li>• No action was taken as reported by 35.5% participants</li> </ul>	less than 5 years of experiences <ul style="list-style-type: none"> <li>• High workload (91.5%)</li> <li>• High expectations from the patients (50.4%)</li> <li>• Substance abuse by patients (50.4%)</li> <li>• Long waiting periods (43.3%)</li> <li>• Rejection of demands (29.1%)</li> <li>• Sensational reports by the media (17.7%)</li> <li>• Inadequate patient-provider communication (9.2%),</li> <li>• Inadequate security (9.2%)</li> </ul>
Vaishali V. et al. (2018) <sup>58</sup>	Haryana; 2015	Cross-sectional study using adopted questionnaire from ILO/ ICN/ WHO/ PSI workplace violence instrument;	n = 215; Junior residents 86.98%, senior residents 13.02%; male 54.9%, female 45.1%; 95.3% participants were aged within 35 years	76.3% (overall, 12 months); 55.3% (verbal), 20.9% (physical)	<ul style="list-style-type: none"> <li>• Surgery and orthopedics departments were common places for physical violence (44% and 39% respectively); most of the verbal violence</li> </ul>	<ul style="list-style-type: none"> <li>• Young doctors aged less than 35 years experienced more violence</li> <li>• Junior residents experienced more physical and verbal violence</li> <li>• Physical violence was more common among male</li> </ul>

		conducted in an urban tertiary care hospital			<p>occurred in medicine department (33%)</p> <ul style="list-style-type: none"> <li>Victims of physical violence reported disturbing memories or thoughts (5.11%), being highly alert (7.9%), having feelings related to the incidents (5.58%); psychological effects including disturbing thoughts (5.1%), being highly alert (6.8%) were found among victims of verbal violence</li> </ul>	doctors (90.2% of all victims)
Gohil RK. et al. (2019) <sup>39</sup>	Delhi; 2017	Cross-sectional study using self-administered	n = 100; resident physicians from different clinical	71.8% (verbal), 10% (physical)	<ul style="list-style-type: none"> <li>Most incidents occurred in the emergency room (70.4%)</li> </ul>	<ul style="list-style-type: none"> <li>Junior doctors faced violence more frequently</li> <li>Negative media guide</li> </ul>

		adopted questionnaire from ILO/ ICN/ WHO/ PSI workplace violence instrument; conducted in urban tertiary care hospital	specialties; age ranged between 24 to 31 years		<ul style="list-style-type: none"> <li>• 20% cases were reported to police; no prosecution against any of the perpetrators was ever reported; most of the doctors were dissatisfied (69%) or highly dissatisfied (21.1%) by the way incidents of violence was handled</li> </ul>	<ul style="list-style-type: none"> <li>• Impaired mental health of the patients</li> <li>• Poor communication</li> <li>• Presence of gang member</li> <li>• Unmet demand of the patient party</li> <li>• Long waiting hours</li> <li>• No improvement in the patients' conditions</li> <li>• High medical expenses</li> <li>• Lack of satisfaction with the services offered by the doctors and other staffs.</li> </ul>
Singh, G. et al. (2019) <sup>56</sup>	Uttar Pradesh; 2017-18	Cross-sectional study using a self-administered questionnaire; conducted in three public medical colleges	n = 305; resident doctors, male 67.9%, female 32.1%)	69.5% (overall, 12 months); 70% (verbal), 47.2% (physical)	<ul style="list-style-type: none"> <li>• Most cases (68.4%) occurred in the emergency department</li> <li>• The attendants of the patients were perpetrators in the majority of the cases (69.3%)</li> </ul>	<ul style="list-style-type: none"> <li>• Lack of adequate medicine (38.6%)</li> <li>• Paucity of staff (36.7%)</li> <li>• Miscommunication (20.9%), ineffective communication (14.7%)</li> </ul>

					<ul style="list-style-type: none"> <li>• 60.3% study participants reported having disturbing memories or thoughts of violence</li> <li>• No action was taken in 35.3% of cases; 85% victims felt dissatisfied with the measures taken after the violence</li> </ul>	
Dixit et al. (2019) <sup>61</sup>	NR	Cross-sectional study with a self-administered validated questionnaire; conducted in a tertiary care hospital	n = 263; graduate (7.6%), post-graduate (80.2%), doctorate (12.2%); male 49.1%, female 50.9%; 80.5% aged below 35 years	35.7% (overall, 12 months); 86.2% (verbal), 5.3% (physical)	<ul style="list-style-type: none"> <li>• Patients relatives (80.9%), third party (9.6%) and patients themselves (9.6%) were perpetrators in most cases</li> <li>• Victims experienced anger (28.7%), irritability (27.7%), frustration</li> </ul>	<ul style="list-style-type: none"> <li>• Miscommunication (86.2%)</li> <li>• Prolonged waiting time (70.2%)</li> <li>• Billing issues (28.7%)</li> <li>• Death of the patients (31.9%)</li> </ul>

					<p>(31.9%), and fear (11.7%)</p> <ul style="list-style-type: none"> <li>No action was taken in 17% cases, and the help of association was sought in 5.3% cases</li> </ul>	
Sharma et al. (2019) <sup>59</sup>	Gujarat; 2017	Cross-sectional study with a pre-designed self-administered questionnaire; conducted among doctors from six cities in Gujrat	n = 117; graduate (4.3%), post-graduate (82.9%), sub-specialist (12.8%); male 83.8%, female 16.2%; 26.5% aged below 35 years	55.6% (verbal), 4.3% (physical)	NR	<ul style="list-style-type: none"> <li>Inadequate security in the workplace (94.9%)</li> <li>Absence of legal measures (93.2%)</li> <li>Unrealistic expectation from the patient party (98.3%)</li> <li>Low literacy among the patients (88%)</li> <li>Over-burdened hospital (84.6%)</li> <li>Poor communication skills among the doctors (71.8%)</li> </ul>
Kumar NS. et al. (2019) <sup>62</sup>	NR	Cross sectional study using a self-administered questionnaire;	n = 118; all critical care physicians; 77.97% male, 22.03% female; 83.9%	72% (overall); physical (13.56%), verbal (48.3%)	<ul style="list-style-type: none"> <li>Most episodes occurred during night shifts</li> <li>Due to WPV, 60% victims</li> </ul>	<ul style="list-style-type: none"> <li>Poor communication (65%)</li> <li>Billing-related issues (27%)</li> </ul>

		conducted in a conference	aged below 40 years		<p>changed the place or pattern of work, 28% lost their working hours, 26% had affected educational attainments, and 23% reported psychological impacts</p> <ul style="list-style-type: none"> <li>• 85% reported to higher authorities; measures were non-satisfactory in 53% cases</li> </ul>	<ul style="list-style-type: none"> <li>• Lack of satisfaction regarding medical services (21%)</li> </ul>
Sharma S. et al. (2019) <sup>60</sup>	Punjab; 2017-18	Cross-sectional study using an adapted questionnaire from WHO; conducted in a tertiary hospital	n = 295; doctors 53.9%, nurses 46.1%; male 29.83%, female 70.17%; 59.7% aged below 30 years	53.56% (overall); 50% (verbal), 3.7% (physical)	<ul style="list-style-type: none"> <li>• More violence was reported during the night shift, and most common places of WPV were ICU and emergency department</li> <li>• Victims had disturbing memories (24.7%), an</li> </ul>	<ul style="list-style-type: none"> <li>• Unexpected complication and death of the patient</li> <li>• Lack of improvement of health outcomes</li> <li>• Extended hospital stays</li> <li>• Shortage of staffs</li> <li>• Poor hospital administration</li> <li>• Unexpected bill or financial issues</li> </ul>

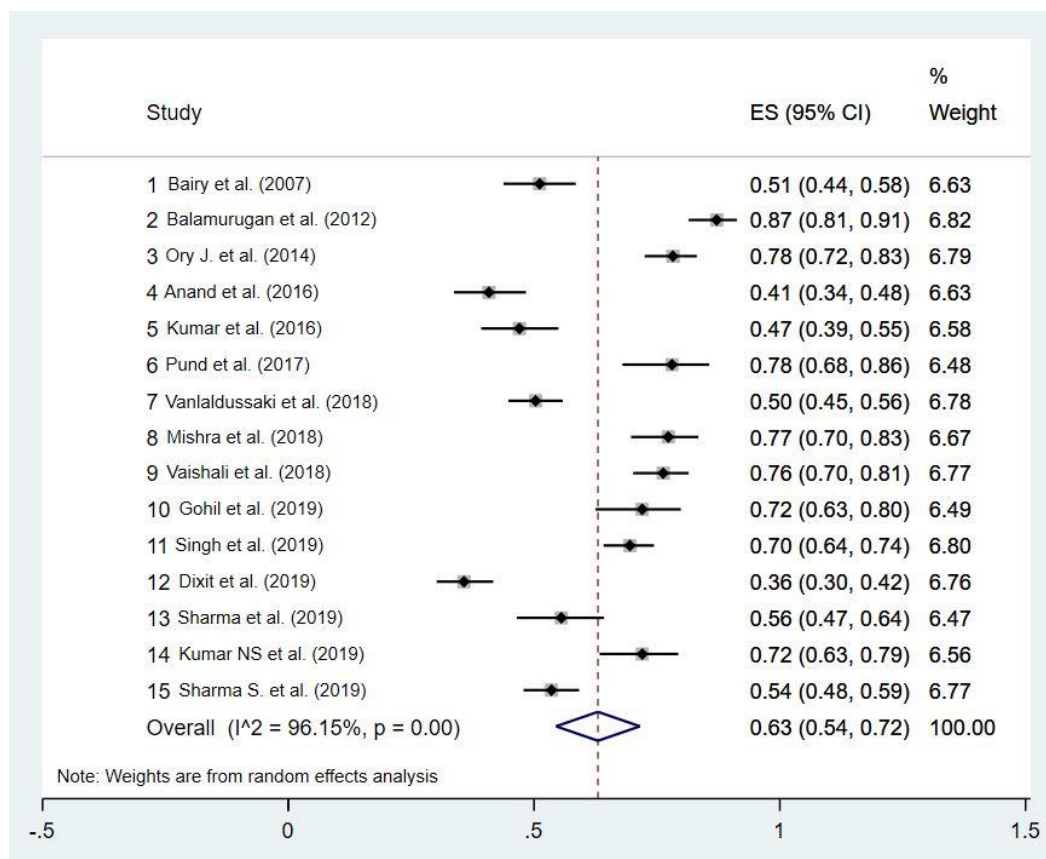


					attitude of extreme avoidance (31.6%), remained very cautious (75.3%) and perceived high burden of stress (59.4%)	<ul style="list-style-type: none"> <li>• Sociopolitical influences of patient party</li> </ul>
Abbreviations: NR: Not reported; WHO: World Health Organization, WPV: Workplace violence						

303

304 **3.2 Prevalence of WPV Against Healthcare Professionals in India**

305 In the meta-analysis, the pooled prevalence of WPV was found as 63% (95% CI, 55%-72%)  
 306 among 2849 participants from the 15 recruited studies in this review (Figure 2). There was  
 307 highly statistically significant heterogeneity ( $I^2 = 95.79\%$ ,  $p = 0.00$ ) for which the random-effects  
 308 model was used in this analysis.



309

310 **Figure 2: Pooled Prevalence of WPV Against Healthcare Professionals in India**

311 In the subgroup analysis, pooled prevalence for variables including gender (male or female) ,  
 312 sample size (less or more than 200), publication year (studies published before or after 2017),  
 313 timeframe of prevalence reporting (12-months or lifetime), and types of violence (verbal or  
 314 physical) were estimated (Table 3). Nine studies reported gender-specific cases of the prevalence  
 315 of WPV for male and female, which revealed a pooled estimate of 64% (95% CI, 51%-78%) and  
 316 54% (95% CI, 47%-62%) among male and female participants respectively.

317

318 **Table 3: Subgroup Analysis of the Prevalence of WPV**

<b>Variables</b>	<b>Number of studies</b>	<b>Number of participants</b>	<b>Prevalence (95% CI)</b>	<b>I<sup>2</sup> value</b>	<b>p value</b>
<i>All</i>	15	2849	63% (54-72)	96.15%	0.00
<b><i>Gender</i></b>					
Male	9	921	64% (51-78)	95.90%	0.00
Female	9	846	54% (47-62)	78.60%	0.00
<b><i>Sample size</i></b>					
Less than 200	9	1231	65% (53-76)	95.50%	0.00
More than 200	6	1618	61% (47-74)	97.10%	0.00
<b><i>Publication year</i></b>					
Published till 2017	6	985	64% (48-80)	97.10%	0.00
Published after 2017	9	1864	62% (53-72)	95.20%	0.00
<b><i>Timeframe of prevalence estimation</i></b>					
12-months	7	1290	55% (43-67)	95.50%	0.00
Lifetime	9	1641	69% (61-78)	93.80%	0.00
<b><i>Type of violence</i></b>					
Verbal violence	14	2780	52% (45-60)	93.90%	0.00
Physical violence	13	2496	8% (5-11)	93.70%	0.00
Abbreviations: WPV: Workplace violence; CI: Confidence interval					

319

320 Nine studies with sample size less than 200 had a pooled prevalence of 65% (95% CI, 53%-76%)

321 whereas six studies with more than 200 samples had a pooled prevalence of 62% (95% CI, 47%-

322 74%). Moreover, six studies were published until 2017, which had a pooled prevalence of 64%

323 (95% CI, 48%-80%). Nine studies published after 2017 had a pooled prevalence of 62% (95%

324 CI, 53%-72%). Studies reported the prevalence of WPV in different timeframes. For seven

325 studies reporting a 12-month prevalence of WPV, the pooled prevalence was 55% (95% CI,

326 43%-67%) whereas nine studies reported a lifetime prevalence of WPV with a pooled prevalence

327 of 69% (95% CI, 61%-78%). Furthermore, the pooled prevalence of verbal and physical violence  
328 was 52% (95% CI, 45%-60%) and 8% (95% CI, 5%-11%), respectively.

### 329 ***3.3 Characteristics of the WPV***

#### 330 ***3.3.1 Location, Time, Frequency, and Magnitude of WPV***

331 Six studies reported emergency department as the most commonplace of WPV.<sup>39,40,53,56,57,60</sup> For  
332 example, Pund et al. reported that the doctors working in emergency department were more  
333 likely to experience WPV (odds ratio [OR] 4.77, 95% CI 1.45-15.63).<sup>57</sup> Other places of  
334 occurring WPV included department of medicine,<sup>41,58</sup> surgery,<sup>41,58</sup> gynecology and obstetrics,<sup>41</sup>  
335 and intensive care unit.<sup>60</sup> Two studies reported evening and night shifts as the common time  
336 when most incidents of WPV were observed.<sup>59,62</sup> Moreover, studies have also reported varying  
337 magnitudes of violence. For example, Ori et al. reported 38.89% participants experienced WPV  
338 for three or more times.<sup>53</sup> Another study by Vanlaldusaki et al. reported 8.8% participants had  
339 persistent exposure to WPV.<sup>54</sup> Furthermore, the magnitude of violence was diverse in a few  
340 studies involving gender-based violence alongside physical and verbal violence. For example,  
341 Ori et al.<sup>53</sup> reported one case of sexual violence and Gohil et al.<sup>39</sup> reported sexually offensive  
342 verbal violence against the study participants, which involved both physical and verbal abuses.  
343 Also, participants experiencing the same type of violence had varying levels of exposure to the  
344 WPV. For example, Balamurugan et al. reported the level of violence as mild and moderate  
345 among 57% and 30.2% participants, respectively.<sup>52</sup>

#### 346 ***3.3.2 Impacts of WPV Among the Victims***

347 Incidents of WPV had multiple consequences among the victims. Six studies reported varying  
348 levels of psychological impacts among the victims of WPV.<sup>40,54,56,58,60,62</sup> For example, Anand et  
349 al. reported fear (59%), sadness (44.3%), headache (31.1%) and other psychological problems  
350 after WPV.<sup>40</sup> Disturbing memories of WPV affected the victims as reported in four  
351 studies.<sup>54,56,58,60</sup> Three studies reported a more cautious attitude in the workplace and avoidance  
352 of WPV-related discussions among the victims.<sup>54,58,60</sup> Victims also reported WPV affected their  
353 self-esteem and professional confidence.<sup>51</sup> Moreover, Pund et al. reported extortion and  
354 intentional destruction of property among the cases of WPV.<sup>57</sup> Studies conducted by  
355 Vanlaldusaki et al. and Pund et al. reported a diminished sense of safety in the workplace as

356 found among the victims of WPV.<sup>54,57</sup> Furthermore, a study by Kumar NS et al. reported an  
357 altered working pattern and lost working hours among the victims of WPV.<sup>62</sup>

### 358 **3.3.3 Perpetrators of WPV and Measures Following WPV**

359 Six studies reported the perpetrators of WPV.<sup>40,51,53,55,56,61</sup> In most studies (n = 5),<sup>40,53,55,56,61</sup> the  
360 relatives or attendants of the patients were major perpetrators of WPV whereas two studies  
361 reported the involvement of hospital staffs in abusing their colleagues.<sup>40,51</sup> In most cases, the  
362 incidents of WPV was not reported to higher authorities. Low reporting was documented in  
363 seven studies which mentioned about a reporting system.<sup>39-41,51,55,61,62</sup> Moreover, the actions  
364 taken by the respective authorities were limited as revealed in studies conducted by Pund et al.,<sup>57</sup>  
365 Vanlaldusaki et al.,<sup>54</sup> and Kumar M. et al.<sup>41</sup> In addition, Kumar NS et al.,<sup>62</sup> Singh et al.,<sup>56</sup> and  
366 Gohil et al.<sup>39</sup> reported the victims were not satisfied with the adopted measures following WPV.  
367 In studies conducted by Dixit et al.,<sup>61</sup> Gohil et al.,<sup>39</sup> and Mishra et al.,<sup>55</sup> the participants reported  
368 that no action was taken following the incidents of WPV.

### 369 **3.4 Factors Associated with WPV**

370 Several factors associated with WPV were reported across studies, among which problems  
371 related to patient-provider communication were reported in most of the studies (n = 10).<sup>39,40,53-  
372 57,59,61,62</sup> For example, Ori J. et al. reported difficulties in communicating between doctors and  
373 patients contributed to WPV.<sup>53</sup> Another study by Anand et al. highlighted poor communication  
374 skills among 81.1% of the participating healthcare providers, which was identified as a critical  
375 factor associated with WPV.<sup>40</sup> Another key factor associated with WPV was a lack of  
376 satisfaction among the patients (n = 7).<sup>39,40,55,59-62</sup> For example, a study by Gohil et al. reported  
377 that the patients were not satisfied with the services offered to them, which aggravated incidents  
378 of WPV.<sup>39</sup> Moreover, many studies (n = 7) reported fewer years of professional experience  
379 among the providers was associated with WPV.<sup>39,41,51,52,55,57,58</sup> For example, Pund et al. reported  
380 that young doctors with less experience in workplaces were more likely to experience WPV  
381 compared to their senior colleagues (OR 3.67, 95% CI 1.28-10.47).<sup>57</sup> Moreover, inadequate  
382 resources and poor infrastructure affected the overall working environment and contributed to  
383 WPV, as reported in six studies.<sup>40,53,54,56,57,60</sup> For example, Anand et al. reported a shortage of  
384 resources as a major reason (73.4%) of WPV.<sup>40</sup> Another factor contributing to WPV was long  
385 waiting hours in the hospitals as reported in five studies.<sup>39-41,55,61</sup> In a study by Kumar M. et al.,

386 73.5% of the participating healthcare providers reported long waiting hours as a challenge which  
387 might have influenced the patients and their relatives in the cases of WPV.<sup>41</sup>

388 Further, five studies have reported excessive workload and overcrowding of the hospitals  
389 affecting the health service delivery and increasing the incidents of WPV in the respective  
390 hospitals.<sup>40,53–55,59</sup> Anand et al. reported overcrowding was perceived as a critical factor related to  
391 WPV by 77.5% participants.<sup>40</sup> Another factor associated with WPV was issues related to billing  
392 and medical expenses, which was reported in four studies.<sup>39,60–62</sup> For example, Dixit et al.  
393 reported billing was associated with WPV as identified by 28.7% participants,<sup>61</sup> which were  
394 similar to the findings of Kumar NS. et al. where 27% participants reported medical expenses  
395 were associated with WPV.<sup>62</sup> Moreover, four studies reported a lack of protective measures to  
396 make the workplace secure against WPV.<sup>53,55,59,60</sup> A study by Sharma et al. reported inadequate  
397 security (94.9%) and the absence of legal measures (93.2%) to protect the health workforce from  
398 WPV and its consequences.<sup>59</sup> Most of the studies reported aggregated data for all genders;  
399 however, Ori J. et al. and Vaishali et al. reported WPV was higher among male participants.<sup>53,58</sup>  
400 In contrast, Balamurugan reported higher incidents of WPV among the female participants.<sup>52</sup>  
401 Other factors associated with WPV included behavioral issues of the patients and the healthcare  
402 professionals (n = 3),<sup>39,54,55</sup> lack of literacy among the patients and their relatives (n = 2),<sup>53,59</sup>  
403 death of the patient (n = 2),<sup>60,61</sup> socio-political influences of the patients (n = 2),<sup>39,60</sup> and negative  
404 reports in mass media (n = 2).<sup>39,55</sup>

405

#### 406 **4. Discussion**

407 This review evaluated empirical studies and reported the current evidence on WPV. In the  
408 context of India, a wide range of health systems challenges deteriorate the desired roles,  
409 activities, and outcomes in healthcare organizations resulting in unexpected incidents like WPV.  
410 In addition, incidents of WPV can critically affect the relationships between patients and their  
411 healthcare providers, the wellbeing of the patients as well as the health workforce, delivery of  
412 health services, trust on the health system, and overall quality of care. Therefore, WPV can be  
413 examined as a vicious process within the resource-constrained health system in India. It is  
414 essential to acknowledge how individual, interpersonal, organizational, and systems-level factors  
415 interact with each other and contribute to WPV. This review identified the characteristics and

416 associated factors of WPV, which show the complex structural and functional challenges within  
417 the existing health services organizations. These findings offer several insights which are critical  
418 for future research, policymaking, and practices. To our knowledge, this is the first systematic  
419 review and meta-analysis presenting the prevalence, characteristics, and associated factors of  
420 WPV against healthcare professionals in India.

421 In this review, most of the studies reported WPV in tertiary hospitals, which are mostly located  
422 in urban areas. Therefore, studies in this review do not inform the severity of WPV in rural areas  
423 of India. Nearly 68.84% of Indian population live in rural areas which have less-developed  
424 infrastructures, a more severe paucity of human resources, low literacy among the general  
425 population, high poverty and inability to pay for health services, and many other barriers to  
426 deliver health services.<sup>63</sup> In addition, the rural health system largely depends on community-level  
427 health workforce, including Accredited Social Health Activists and Anganwadi workers who  
428 have lesser skills and resources compared to healthcare professionals in urban centers.<sup>64,65</sup> These  
429 challenges increase the likelihood of WPV in rural areas. Moreover, the magnitude and  
430 attributable factors of WPV can be different in private healthcare organizations. These areas are  
431 not adequately explored in the existing studies. Future research should address these knowledge  
432 gaps and explore the severity and underlying factors associated with WPV in different  
433 geographic and organizational contexts within India.

434 Another concept in this discourse is the patient-provider communication (PPC), which plays a  
435 critical role in patient-centered decision-making, accessing and utilizing healthcare services, and  
436 achieving desirable health outcomes.<sup>66</sup> Ineffective PPC can serve as a major barrier in healthcare  
437 organizations leading to inadvertent conditions like WPV.<sup>67,68</sup> Most studies in this review  
438 identified inadequate and ineffective PPC as a major challenge necessitating further assessment  
439 and actions. There is a lack of empirical studies discussing the determinants of PPC in the socio-  
440 cultural context of India.<sup>69</sup> Moreover, the existing health education programs offer little emphasis  
441 on socio-behavioral aspects of formal caregiving in healthcare professions.<sup>70</sup> These challenges  
442 suggest that there is a critical lack of knowledge and preparedness among the providers on  
443 establishing and managing meaningful PPC in their workplaces. Educational and psychosocial  
444 interventions for healthcare providers can help in overcoming this crisis and enable them to  
445 better communicate with their patient and manage health problems with empathy.<sup>71,72</sup>

446 Moreover, several challenges including low literacy, poverty, behavioral issues, and  
447 dissatisfaction are reported among patients attending healthcare organizations in India. Their  
448 problems require careful attention from both the healthcare and social perspectives. In low- and  
449 middle-income countries, socio-behavioral challenges among the patients often lead to  
450 suboptimal participation in health services.<sup>73</sup> Increasing awareness and engaging the patients in  
451 health services would necessitate behavior change communication in both healthcare and  
452 community levels.<sup>74</sup> However, addressing social inequalities would need a broader approach  
453 where the healthcare providers can collaborate with social welfare agencies to alleviate social  
454 and structural barriers, resolve the perceived challenges specific for contexts and people, and  
455 address socio-behavioral risk factors of WPV in a given population.<sup>72,74</sup>

456 It is essential to recognize that a shortage of resources in a healthcare organization was revealed  
457 as a major challenge related to WPV. In India, most of the public hospitals suffer from a severe  
458 scarcity of healthcare providers.<sup>75</sup> Moreover, the inadequate supply of medication and a lack of  
459 standard operating procedures for clinical and non-clinical activities in the hospitals result in  
460 suboptimal health services and outcry among the patients.<sup>76</sup> Policymakers and healthcare leaders  
461 should acknowledge this gap and establish institutional approaches to assess the logistic  
462 problems and meet the institution-specific demands in a timely manner. Furthermore, scarcity of  
463 human resources should be addressed through better human resource strategies including  
464 recruitment of adequate human resources, educating and preparing them for optimal service  
465 delivery, deploying them ensuring equitable distribution, and creating an enabling environment  
466 where they can serve with satisfaction and excellence.<sup>77</sup> In addition, recruiting interpreters and  
467 public relations personnel can facilitate health communications and service delivery, which may  
468 alleviate the workload of the healthcare professionals and improve holistic care in healthcare  
469 organizations.<sup>53</sup>

470 Furthermore, poor and unsafe infrastructure critically affects the overall delivery and utilization  
471 of health services.<sup>78</sup> In resource-constrained contexts, poorly designed healthcare facilities can  
472 foster discomfort and impatience among patients and healthcare professionals.<sup>78,79</sup> It is essential  
473 to consider such structural issues while designing and improving healthcare infrastructures. In  
474 addition, overcrowding is common among public hospitals in India, where each tertiary hospital  
475 is likely to have manifolds of patients compared to the institutional capacities.<sup>53,54</sup> This leads to



476 overutilization of the resources with minimal repairing or restoration of the infrastructures and  
477 amenities. This is more of a system's challenge where the health systems should be strengthened  
478 by improving the structural and functional capacities of the healthcare infrastructures to meet the  
479 population health needs.<sup>78</sup>

480 In such a scenario, healthcare security management and surveillance systems supported by  
481 advanced information technologies can help not only in oversight of the security of the  
482 organizations but in making decisions to prevent potential conflicts.<sup>80,81</sup> Such systems may  
483 include real-time video surveillance of the hospital areas, monitoring the movement of  
484 individuals to predict and prevent unlawful activities, maintaining digital records of the patients,  
485 visitors, employees, and other individuals entering in the hospital premises.<sup>81,82</sup> In addition, such  
486 surveillance systems can be integrated within Health Management Information System (HMIS)  
487 at the local, states, and national levels; which may allow stakeholders at different levels and  
488 agencies to take preventive and corrective measures to make safer healthcare organizations.

489 This review also found that the emergency department was a commonplace of WPV in India,  
490 which requires an in-depth analysis of the underlying problems in the emergency management  
491 and referral systems in Indian healthcare. In most areas of India, the emergency response system  
492 is inadequate to deal with mass casualties from incidents like road traffic accidents, natural or  
493 man-made disasters, and other emergency conditions requiring coordinated care.<sup>83</sup> Moreover, the  
494 primary care centers are generally ill-equipped to manage emergency cases, which are generally  
495 referred to urban multi-specialty hospitals.<sup>84</sup> This continuous inflow of patients often leads to  
496 overcrowding near the emergency department of urban hospitals, which has pre-existing  
497 limitations and challenges.<sup>83</sup> Understanding this cycle of emergency management can better  
498 inform how potential strategies can be developed and implemented to strengthen emergency  
499 management and referral services. Such strategies may include hotlines for rapid response in  
500 emergency cases, ambulance services for mobilizing the patients, institutionalizing protocols for  
501 trauma management guiding specific types of patients to pre-specified centers without delay, and  
502 establishing a centralized information system for coordinating the patients and health services  
503 organizations for better emergency and referral care.<sup>83,85</sup>

504 Many studies in this review reported critical gaps in existing systems of reporting WPV and  
505 insufficient measures taken by the hospital authorities, which may affect the occupational

506 engagement and personal wellbeing of the victims of WPV. Also, the physical and mental health  
507 of the victims of WPV should be taken care of alongside the administrative measures.<sup>55,56</sup>  
508 Without addressing these challenges, psychosocial and structural violence against the victims  
509 may appear to be more severe than WPV itself. Health services organizations should  
510 acknowledge their accountability to ensure the safety at the workforce and institutionalize pro-  
511 active systems of reporting and investigating the incidents of WPV.

512 Furthermore, addressing WPV would require a legislative perspective to analyze the same in the  
513 context of existing policies and laws within healthcare organizations, respective states, and the  
514 nation. In India, 19 states have laws for protection of medical professionals and healthcare  
515 establishments, which are essential to enforce in practice to prevent and address WPV.<sup>86</sup> Legal  
516 and administrative challenges to operationalize existing legislative measures should be explored  
517 and future policies should be developed considering the high societal burden of WPV against  
518 health workforce in India.

519 Lastly, a centralized health system may affect participatory planning and implementation of  
520 programs and policies to address WPV at the local level. Moreover, factors associated with WPV  
521 can be unique from one place to another. Therefore, engaging stakeholders at the local and  
522 regional levels and considering their collective perspectives can facilitate better policymaking  
523 and preventing WPV. Such coordination among stakeholders in different levels may protect the  
524 healthcare providers and enable them to work safely in central and remote healthcare  
525 organizations.

526 This systematic review has several limitations which are essential to acknowledge. One such  
527 limitation is the biases within the existing body of literature. We included studies from specific  
528 databases and additional sources; however, it is possible that there are studies which might have  
529 met our criteria but did not appear in our searching process. Such studies, if there are any, could  
530 have affected the findings of the review. Moreover, publication bias may exist within the studies.  
531 As observed in prevalence meta-analyses, there is a lack of consensus on the methods of evaluating  
532 publication bias for prevalence studies.<sup>87</sup> Conventional funnel plots may provide spurious  
533 asymmetry despite having no publication bias.<sup>88</sup> Acknowledging this limitation of application and  
534 interpretation, we did not analyze publication bias in this meta-analysis. Furthermore, various  
535 factors associated with WPV were reported across studies which had high heterogeneity in

536 methods and itemized responses, which did not allow to meta-analyze specific risk factors; which  
537 is another limitation of this review. Future research should acknowledge the above-mentioned  
538 limitations and inform better evidence with higher precision.

539

## 540 **5. Conclusion**

541 This systematic review and meta-analysis evaluated the current evidence and found a high  
542 prevalence of WPV against healthcare professionals in India. Moreover, the characteristics and  
543 associated factors of WPV in the empirical studies inform the magnitude and underlying reasons  
544 of WPV in the complex healthcare and socio-cultural context of India. Limitations in the existing  
545 literature necessitate further research with rigorous design examining different aspects of WPV  
546 among the healthcare professionals. However, the current evidence reported in this systematic  
547 review informs a need to acknowledge the high burden of WPV experienced by the healthcare  
548 professionals, address the factors associated with WPV, create an safe and enabling environment  
549 in healthcare organizations, and protect the healthcare professionals so that they can protect the  
550 health and wellbeing of their patients without the fear of WPV.

551

## 552 **References**

- 553 1. World Health Organization (WHO). Violence against health workers. *WHO*. 2018.  
554 [https://www.who.int/violence\\_injury\\_prevention/violence/workplace/en/](https://www.who.int/violence_injury_prevention/violence/workplace/en/). Accessed  
555 August 24, 2019.
- 556 2. The National Institute for Occupational Safety and Health (NIOSH). Violence in the  
557 Workplace: Current intelligence bulletin 57. [https://www.cdc.gov/niosh/docs/96-](https://www.cdc.gov/niosh/docs/96-100/introduction.html)  
558 [100/introduction.html](https://www.cdc.gov/niosh/docs/96-100/introduction.html). Published 1996. Accessed August 24, 2019.
- 559 3. Cheung T, Lee PH, Yip PSF. The association between workplace violence and physicians'  
560 and nurses' job satisfaction in Macau. DeLuca V, ed. *PLoS One*. 2018;13(12):e0207577.  
561 doi:10.1371/journal.pone.0207577
- 562 4. Occupational Safety and Health Administration. *Guidelines for Preventing Workplace*  
563 *Violence for Healthcare and Social Service Workers.*; 2015.

- 564 [www.osha.gov](http://www.osha.gov). Accessed August 24, 2019.
- 565 5. Yenealem DG, Woldegebriel MK, Olana AT, Mekonnen TH. Violence at work:  
566 determinants & prevalence among health care workers, northwest Ethiopia: an  
567 institutional based cross sectional study. *Ann Occup Environ Med.* 2019;31:8.  
568 doi:10.1186/s40557-019-0288-6
- 569 6. Magnavita N, Heponiemi T. Violence towards health care workers in a Public Health Care  
570 Facility in Italy: a repeated cross-sectional study. *BMC Health Serv Res.* 2012;12:108.  
571 doi:10.1186/1472-6963-12-108
- 572 7. Beattie J, Griffiths D, Innes K, Morphet J. Workplace violence perpetrated by clients of  
573 health care: A need for safety and trauma-informed care. *J Clin Nurs.* 2019;28:116-124.  
574 doi:10.1111/jocn.14683
- 575 8. Stevenson KN, Jack SM, O'Mara L, LeGris J. Registered nurses' experiences of patient  
576 violence on acute care psychiatric inpatient units: an interpretive descriptive study. *BMC*  
577 *Nurs.* 2015;14:35. doi:10.1186/s12912-015-0079-5
- 578 9. Yang BX, Stone TE, Petrini MA, Morris DL. Incidence, Type, Related Factors, and Effect  
579 of Workplace Violence on Mental Health Nurses: A Cross-sectional Survey. *Arch*  
580 *Psychiatr Nurs.* 2018;32(1):31-38. doi:10.1016/j.apnu.2017.09.013
- 581 10. Hartley D, Ridenour M, Craine J, Morrill A. Workplace violence prevention for nurses  
582 on-line course: Program development. *Work.* 2015;51(1):79-89. doi:10.3233/WOR-  
583 141891
- 584 11. Ferri P, Silvestri M, Artoni C, Di Lorenzo R. Workplace violence in different settings and  
585 among various health professionals in an Italian general hospital: a cross-sectional study.  
586 *Psychol Res Behav Manag.* 2016;9:263-275. doi:10.2147/PRBM.S114870
- 587 12. Stene J, Larson E, Levy M, Dohlman M. Workplace violence in the emergency  
588 department: giving staff the tools and support to report. *Perm J.* 2015;19(2):e113-7.  
589 doi:10.7812/TPP/14-187
- 590 13. Bofo IM. The effects of workplace respect and violence on nurses' job satisfaction in  
591 Ghana: a cross-sectional survey. *Hum Resour Health.* 2018;16(1):6. doi:10.1186/s12960-

- 592 018-0269-9
- 593 14. Rosenthal LJ, Byerly A, Taylor AD, Martinovich Z. Impact and Prevalence of Physical  
594 and Verbal Violence Toward Healthcare Workers. *Psychosomatics*. 2018;59(6):584-590.  
595 doi:10.1016/j.psych.2018.04.007
- 596 15. Andersen LP, Hogh A, Biering K, Gadegaard CA. Work-related threats and violence in  
597 human service sectors: The importance of the psycho-social work environment examined  
598 in a multilevel prospective study. *Work*. 2018;59(1):141-154. doi:10.3233/WOR-172654
- 599 16. Zafar W, Siddiqui E, Ejaz K, et al. Health care personnel and workplace violence in the  
600 emergency departments of a volatile metropolis: results from Karachi, Pakistan. *J Emerg*  
601 *Med*. 2013;45(5):761-772. doi:10.1016/j.jemermed.2013.04.049
- 602 17. Feijó FR, Gräf DD, Pearce N, Fassa AG. Risk Factors for Workplace Bullying: A  
603 Systematic Review. *Int J Environ Res Public Health*. 2019;16(11).  
604 doi:10.3390/ijerph16111945
- 605 18. Fang H, Zhao X, Yang H, et al. Depressive symptoms and workplace-violence-related risk  
606 factors among otorhinolaryngology nurses and physicians in Northern China: a cross-  
607 sectional study. *BMJ Open*. 2018;8(1):e019514. doi:10.1136/bmjopen-2017-019514
- 608 19. ALBashtawy M, Al-Azzam M, Rawashda A, Batiha A-M, Bashaireh I, Sulaiman M.  
609 Workplace violence toward emergency department staff in Jordanian hospitals: a cross-  
610 sectional study. *J Nurs Res*. 2015;23(1):75-81. doi:10.1097/jnr.0000000000000075
- 611 20. Duan X, Ni X, Shi L, et al. The impact of workplace violence on job satisfaction, job  
612 burnout, and turnover intention: the mediating role of social support. *Health Qual Life*  
613 *Outcomes*. 2019;17(1):93. doi:10.1186/s12955-019-1164-3
- 614 21. Hamdan M, Abu Hamra A. Workplace violence towards workers in the emergency  
615 departments of Palestinian hospitals: a cross-sectional study. *Hum Resour Health*.  
616 2015;13(1):28. doi:10.1186/s12960-015-0018-2
- 617 22. Pekurinen V, Willman L, Virtanen M, Kivimäki M, Vahtera J, Välimäki M. Patient  
618 Aggression and the Wellbeing of Nurses: A Cross-Sectional Survey Study in Psychiatric  
619 and Non-Psychiatric Settings. *Int J Environ Res Public Health*. 2017;14(10):1245.

- 620 doi:10.3390/ijerph14101245
- 621 23. d’Ettorre G, Pellicani V. Workplace Violence Toward Mental Healthcare Workers  
622 Employed in Psychiatric Wards. *Saf Health Work*. 2017;8(4):337-342.  
623 doi:10.1016/j.shaw.2017.01.004
- 624 24. Wenzhi Cai, Ling Deng, Meng Liu, Min Yu. Antecedents of medical workplace violence  
625 in South China. *J Interpers Violence*. 2011;26(2):312-327.  
626 doi:10.1177/0886260510362885
- 627 25. Jafree SR. Workplace violence against women nurses working in two public sector  
628 hospitals of Lahore, Pakistan. *Nurs Outlook*. 2017;65(4):420-427.  
629 doi:10.1016/j.outlook.2017.01.008
- 630 26. Bayram B, Çetin M, Çolak Oray N, Can İÖ. Workplace violence against physicians in  
631 Turkey’s emergency departments: a cross-sectional survey. *BMJ Open*.  
632 2017;7(6):e013568. doi:10.1136/bmjopen-2016-013568
- 633 27. Yao S, Zeng Q, Peng M, Ren S, Chen G, Wang J. Stop violence against medical workers  
634 in China. *J Thorac Dis*. 2014;6(6):E141-5. doi:10.3978/j.issn.2072-1439.2014.06.10
- 635 28. Hasan MI, Hassan MZ, Bulbul MMI, Joarder T, Chisti MJ. Iceberg of workplace violence  
636 in health sector of Bangladesh. *BMC Res Notes*. 2018;11(1):702. doi:10.1186/s13104-018-  
637 3795-6
- 638 29. Pandey M, Bhandari TR, Dangal G. Workplace Violence and its Associated Factors  
639 among Nurses. *J Nepal Health Res Counc*. 2018;15(3):235-241.  
640 <http://www.ncbi.nlm.nih.gov/pubmed/29353895>. Accessed August 24, 2019.
- 641 30. N.M. M, A.I. A, A.B.H. B, et al. Violence and abuse faced by junior physicians in the  
642 emergency department from patients and their caretakers: A nationwide study from  
643 Pakistan. *J Emerg Med*. 2012.
- 644 31. Kasai Y, Mizuno T, Sakakibara T, Thu S, Kyaw TA, Htun KA. A survey of workplace  
645 violence against physicians in the hospitals, Myanmar. *BMC Res Notes*. 2018;11(1):133.  
646 doi:10.1186/s13104-018-3240-x

- 647 32. Hossain MM, Sultana A, Shaha T, Rahman MZ, Hossain Nirob MM, Yasmeen S.  
648 Violence against health workforce in Bangladesh: a call for action. *Int J Community Med*  
649 *Public Heal.* 2018;5(5):2151. doi:10.18203/2394-6040.ijcmph20181739
- 650 33. Ghosh K. Violence against doctors: A wake-up call. *Indian J Med Res.* 2018;148(2):130-  
651 133. doi:10.4103/ijmr.IJMR\_1299\_17
- 652 34. Times of India. Over 75% of doctors have faced violence at work, study finds | India  
653 News - Times of India. [https://timesofindia.indiatimes.com/india/Over-75-of-doctors-](https://timesofindia.indiatimes.com/india/Over-75-of-doctors-have-faced-violence-at-work-study-finds/articleshow/47143806.cms)  
654 [have-faced-violence-at-work-study-finds/articleshow/47143806.cms](https://timesofindia.indiatimes.com/india/Over-75-of-doctors-have-faced-violence-at-work-study-finds/articleshow/47143806.cms). Published 2015.  
655 Accessed August 24, 2019.
- 656 35. Kapoor MC. Violence against the medical profession. *J Anaesthesiol Clin Pharmacol.*  
657 2017;33(2):145-147. doi:10.4103/joacp.JOACP\_102\_17
- 658 36. The Guardian. Thousands of Mumbai doctors strike after assaults on hospital staff | World  
659 news | The Guardian. [https://www.theguardian.com/world/2017/mar/21/doctors-strike-](https://www.theguardian.com/world/2017/mar/21/doctors-strike-mumbai-assaults-on-hospital-staff-india)  
660 [mumbai-assaults-on-hospital-staff-india](https://www.theguardian.com/world/2017/mar/21/doctors-strike-mumbai-assaults-on-hospital-staff-india). Published 2017. Accessed August 24, 2019.
- 661 37. The Economic Times. West Bengal Doctors: Mass resignation by doctors in West Bengal.  
662 [https://economictimes.indiatimes.com/news/politics-and-nation/mass-resignation-by-](https://economictimes.indiatimes.com/news/politics-and-nation/mass-resignation-by-doctors-in-west-bengal/articleshow/69785412.cms)  
663 [doctors-in-west-bengal/articleshow/69785412.cms](https://economictimes.indiatimes.com/news/politics-and-nation/mass-resignation-by-doctors-in-west-bengal/articleshow/69785412.cms). Published 2019. Accessed August 24,  
664 2019.
- 665 38. Reuters. Indian doctors to widen strike demanding improved safety after attack - Reuters.  
666 [https://www.reuters.com/article/us-india-doctors-strike/indian-doctors-to-widen-strike-](https://www.reuters.com/article/us-india-doctors-strike/indian-doctors-to-widen-strike-demanding-improved-safety-after-attack-idUSKCN1TF154)  
667 [demanding-improved-safety-after-attack-idUSKCN1TF154](https://www.reuters.com/article/us-india-doctors-strike/indian-doctors-to-widen-strike-demanding-improved-safety-after-attack-idUSKCN1TF154). Published 2019. Accessed  
668 August 24, 2019.
- 669 39. Gohil RK, Singh PK, Saxena N, Patel G. Work place violence against resident doctors of  
670 a tertiary care hospital in Delhi, India. *Int Surg J.* 2019;6(3):975. doi:10.18203/2349-  
671 2902.isj20190834
- 672 40. Anand T, Grover S, Kumar R, Kumar M, Ingle GK. Workplace violence against resident  
673 doctors in a tertiary care hospital in Delhi. *Natl Med J India.* 2016;29(6):344-348.
- 674 41. Kumar M, Verma M, Das T, Pardeshi G, Kishore J, Padmanandan A. A Study of

- 675 Workplace Violence Experienced by Doctors and Associated Risk Factors in a Tertiary  
676 Care Hospital of South Delhi, India. *J Clin Diagn Res.* 2016;10(11):LC06-LC10.  
677 doi:10.7860/JCDR/2016/22306.8895
- 678 42. Liberati A, Altman DG, Tetzlaff J, et al. The PRISMA statement for reporting systematic  
679 reviews and meta-analyses of studies that evaluate healthcare interventions: explanation  
680 and elaboration. *Bmj.* 2009;339:b2700. doi:10.1136/bmj.b2700
- 681 43. Hendren C. RefWorks. *J Med Libr Assoc.* 2004;92(1):111-113.
- 682 44. Ouzzani M, Hammady H, Fedorowicz Z, Elmagarmid A. Rayyan-a web and mobile app  
683 for systematic reviews. *Syst Rev.* 2016;5(1):210. doi:10.1186/s13643-016-0384-4
- 684 45. DerSimonian R, Laird N. Meta-analysis in clinical trials. *Control Clin Trials.*  
685 1986;7(3):177-188. doi:10.1016/0197-2456(86)90046-2
- 686 46. StataCorp. Stata Statistical Software: Release 15. StataCorp LLC, College Station, TX.  
687 <https://www.stata.com/stata15/>. Published 2017.
- 688 47. Nyaga VN, Arbyn M, Aerts M. Metaprop: a Stata command to perform meta-analysis of  
689 binomial data. *Arch Public Heal.* 2014;72(1):39. doi:10.1186/2049-3258-72-39
- 690 48. National Heart Lung and Blood Institute (NHLBI). Quality Assessment Tool for  
691 Observational Cohort and Cross-sectional Studies. [https://www.nhlbi.nih.gov/health-](https://www.nhlbi.nih.gov/health-topics/study-quality-assessment-tools)  
692 [topics/study-quality-assessment-tools](https://www.nhlbi.nih.gov/health-topics/study-quality-assessment-tools). Published 2018. Accessed August 25, 2019.
- 693 49. Qian F, Liu G, Hu FB, Bhupathiraju SN, Sun Q. Association Between Plant-Based  
694 Dietary Patterns and Risk of Type 2 Diabetes: A Systematic Review and Meta-analysis.  
695 *JAMA Intern Med.* July 2019. doi:10.1001/jamainternmed.2019.2195
- 696 50. Lingutla KK, Pollock R, Ahuja S. Sacroiliac joint fusion for low back pain: a systematic  
697 review and meta-analysis. *Eur Spine J.* 2016;25(6):1924-1931. doi:10.1007/s00586-016-  
698 4490-8
- 699 51. Bairy K, Thirumalaikolundusubramanian P, Sivagnanam G, Saraswathi S, Sachidananda  
700 A, Shalini A. Bullying among trainee doctors in Southern India: A questionnaire study. *J*  
701 *Postgrad Med.* 2007;53(2):87-91. doi:10.4103/0022-3859.32206



- 702 52. Balamurugan G. Patients' violence towards nurses: A questionnaire survey Dressler. *Int J*  
703 *Nurs I(1)*,. 2012;1(1):1-7.
- 704 53. Ori J, Devi NS, Singh AB, Thongam K, Padu J, Abhilesh R. Prevalence and attitude of  
705 workplace violence among the post graduate students in a tertiary hospital in Manipur.  
706 *JMS - J Med Soc*. 2015;28(1):25-28. doi:10.4103/0972-4958.135222
- 707 54. Mercy A, Sangma ZM, Visi V, Singh Akoijam B, Author C. Verbal and Physical violence  
708 towards junior doctors in a medical college in Manipur: A cross sectional study. *IOSR J*  
709 *Humanit Soc Sci*. 2018;23(9):12-17. doi:10.9790/0837-2301091217
- 710 55. Mishra S, Chopra D, Jauhari N, Ahmad A, Kidwai NA. Violence against health care  
711 workers: a provider's (staff nurse) perspective. *Int J Community Med Public Heal*.  
712 2018;5(9):4140. doi:10.18203/2394-6040.ijcmph20183609
- 713 56. Singh G, Singh A, Chaturvedi S, Khan S. Workplace violence against resident doctors: A  
714 multicentric study from government medical colleges of Uttar Pradesh. *Indian J Public*  
715 *Health*. 2019;63(2):143-146. doi:10.4103/ijph.IJPH\_70\_18
- 716 57. Pund SB, Kuril BM, Doibale MK, Ankushe RT, Kumar P, Siddiqui N. Study of workplace  
717 violence, its risk factors and perceptions about workplace security in doctors of Paithan.  
718 *Int J Community Med Public Heal*. 2017;4(6):1987. doi:10.18203/2394-  
719 6040.ijcmph20172162
- 720 58. Vaishali V, Chayal V, Verma R, Khanna P. Violence against resident doctors, its  
721 psychological impact and associated factors in accident & emergency department in a  
722 tertiary care institute of Haryana. *Indian J Community Heal*. 2018;30(4):368-372.  
723 <http://proxy.library.tamu.edu/login?url=http://search.ebscohost.com/login.aspx?direct=true&db=ccm&AN=134826437&site=ehost-live>.  
724
- 725 59. Sharma S, Shrimali V, Thakkar H, et al. A study on violence against doctors in selected  
726 cities of Gujarat. *Med J Dr DY Patil Vidyapeeth*. 2019;12(4):347.  
727 doi:10.4103/mjdrdypu.mjdrdypu\_137\_18
- 728 60. Sharma S, Gautam PL, Sharma S, et al. Questionnaire-based Evaluation of Factors  
729 Leading to Patient- physician Distrust and Violence against Healthcare Workers. 2019.

- 730 61. Dixit S, D'Souza B, Singh R, Thomas J, Somu G, Kamath R. Factors Contributing to  
731 Workplace Violence Against Doctors in a Tertiary Care Teaching Hospital in South India.  
732 *Indian J Forensic Med Toxicol.* 2019;13(3):108. doi:10.5958/0973-9130.2019.00176.2
- 733 62. Kumar NS, Munta K, Kumar JR, Rao SM, Dnyaneshwar M, Harde Y. A Survey on  
734 Workplace Violence Experienced by Critical Care Physicians. 2019:0-6.
- 735 63. Sharma V, Gupta N, Rao NC. Perception towards serving rural population amongst  
736 interns from dental colleges of haryana. *J Clin Diagn Res.* 2014;8(9):ZC31-2.  
737 doi:10.7860/JCDR/2014/8978.4832
- 738 64. Lamberti LM, Fischer Walker CL, Taneja S, Mazumder S, Black RE. The Association  
739 between Provider Practice and Knowledge of ORS and Zinc Supplementation for the  
740 Treatment of Childhood Diarrhea in Bihar, Gujarat and Uttar Pradesh, India: A Multi-Site  
741 Cross-Sectional Study. Ali M, ed. *PLoS One.* 2015;10(6):e0130845.  
742 doi:10.1371/journal.pone.0130845
- 743 65. Scott K, George AS, Ved RR. Taking stock of 10 years of published research on the  
744 ASHA programme: examining India's national community health worker programme  
745 from a health systems perspective. *Heal Res Policy Syst.* 2019;17(1):29.  
746 doi:10.1186/s12961-019-0427-0
- 747 66. Inui TS, Carter WB. Problems and prospects for health services research on provider-  
748 patient communication. *Med Care.* 1985;23(5):521-538.
- 749 67. Smith-Oka V. Microaggressions and the reproduction of social inequalities in medical  
750 encounters in Mexico. *Soc Sci Med.* 2015;143:9-16. doi:10.1016/j.socscimed.2015.08.039
- 751 68. Weerakoon A, Fitzgerald L, Porter S. An Australian government dental scheme: Doctor-  
752 dentist-patient tensions in the triangle. *J Forensic Odontostomatol.* 2014;32 Suppl 1(Suppl  
753 1):9-14. <http://www.ncbi.nlm.nih.gov/pubmed/25557410>. Accessed August 25, 2019.
- 754 69. Bangalore Declaration Group. A consensus document requesting the Medical Council of  
755 India to take action on the issue of boundary violations in doctor-patient relationships.  
756 *Natl Med J India.* 25(2):96-98; Discussion 98-9.  
757 <http://www.ncbi.nlm.nih.gov/pubmed/22816167>. Accessed August 25, 2019.

- 758 70. Deshpande PA. A Survey of Doctors' Awareness of the Role of Communication Skills in  
759 Developing a Caring Doctor-Patient Relationship. *Indian J Public Heal Res Dev*.  
760 2017;8(4):451. doi:10.5958/0976-5506.2017.00384.9
- 761 71. Ha JF, Longnecker N. Doctor-patient communication: a review. *Ochsner J*.  
762 2010;10(1):38-43. <http://www.ncbi.nlm.nih.gov/pubmed/21603354>. Accessed August 25,  
763 2019.
- 764 72. Puchalski CM. The role of spirituality in health care. *Proc (Bayl Univ Med Cent)*.  
765 2001;14(4):352-357. doi:10.1080/08998280.2001.11927788
- 766 73. Pantoja T, Opiyo N, Lewin S, et al. Implementation strategies for health systems in low-  
767 income countries: an overview of systematic reviews. *Cochrane database Syst Rev*.  
768 2017;9(9):CD011086. doi:10.1002/14651858.CD011086.pub2
- 769 74. Institute of Medicine (US) Committee on Health and Behavior: Research P  
770 and P. Individuals and Families: Models and Interventions. 2001.  
771 <https://www.ncbi.nlm.nih.gov/books/NBK43749/>. Accessed August 25, 2019.
- 772 75. Pallikadavath S, Singh A, Ogollah R, Dean T, Stones W. Human resource inequalities at  
773 the base of India's public health care system. *Health Place*. 2013;23:26-32.  
774 doi:10.1016/J.HEALTHPLACE.2013.05.003
- 775 76. Kasthuri A. Challenges to Healthcare in India - The Five A's. *Indian J Community Med*.  
776 2018;43(3):141-143. doi:10.4103/ijcm.IJCM\_194\_18
- 777 77. Kabene SM, Orchard C, Howard JM, Soriano MA, Leduc R. The importance of human  
778 resources management in health care: a global context. *Hum Resour Health*. 2006;4:20.  
779 doi:10.1186/1478-4491-4-20
- 780 78. Garrett L. Gaps between the rich and the poor. The widening differences in wealth, life  
781 expectancy, public health infrastructure and perception of threats, and the consequences  
782 for global security. *EMBO Rep*. 2003;4 Spec No:S15-9. doi:10.1038/sj.embor.embor859
- 783 79. Lerman BJ, Alsan M, Chia NJ, Brown JA, Wren SM. Beyond Infrastructure:  
784 Understanding Why Patients Decline Surgery in the Developing World: An Observational  
785 Study in Cameroon. *Ann Surg*. 2017;266(6):975-980.

- 786 doi:10.1097/SLA.0000000000002002
- 787 80. Shapiro JS, Mostashari F, Hripcsak G, Soulakis N, Kuperman G. Using health information  
788 exchange to improve public health. *Am J Public Health*. 2011;101(4):616-623.  
789 doi:10.2105/AJPH.2008.158980
- 790 81. Arnetz JE, Hamblin L, Ager J, et al. Using database reports to reduce workplace violence:  
791 Perceptions of hospital stakeholders. *Work*. 2015;51(1):51-59. doi:10.3233/WOR-141887
- 792 82. Dašić P, Dašić J, Crvenković B. Improving Patient Safety in Hospitals through Usage of  
793 Cloud Supported Video Surveillance. *Open access Maced J Med Sci*. 2017;5(2):101-106.  
794 doi:10.3889/oamjms.2017.042
- 795 83. Subhan I, Jain A. Emergency care in India: the building blocks. *Int J Emerg Med*.  
796 2010;3(4):207-211. doi:10.1007/s12245-010-0223-7
- 797 84. Ramanayake RPJC, Ranasingha S, Lakmini S. Management of emergencies in general  
798 practice: role of general practitioners. *J Fam Med Prim care*. 2014;3(4):305-308.  
799 doi:10.4103/2249-4863.148089
- 800 85. Ernstberger A, Koller M, Zeman F, et al. A trauma network with centralized and local  
801 health care structures: Evaluating the effectiveness of the first certified Trauma Network  
802 of the German Society of Trauma Surgery. *PLoS One*. 2018;13(3):e0194292.  
803 doi:10.1371/journal.pone.0194292
- 804 86. Sen M, Honavar SG. It's a doc's life - Workplace violence against doctors. *Indian J*  
805 *Ophthalmol*. 2019;67(7):981-984. doi:10.4103/ijo.IJO\_1166\_19
- 806 87. Bui C, Rahman B, Heywood AE, MacIntyre CR. A Meta-Analysis of the Prevalence of  
807 Influenza A H5N1 and H7N9 Infection in Birds. *Transbound Emerg Dis*. 2017;64(3):967-  
808 977. doi:10.1111/tbed.12466
- 809 88. Hunter JP, Saratzis A, Sutton AJ, Boucher RH, Sayers RD, Bown MJ. In meta-analyses of  
810 proportion studies, funnel plots were found to be an inaccurate method of assessing  
811 publication bias. *J Clin Epidemiol*. 2014;67(8):897-903.  
812 doi:10.1016/j.jclinepi.2014.03.003

