

1 **Title Page**

2 Title: Surgical candidacy and treatment uptake among women with cervical cancer at
3 public referral hospitals in Kampala, Uganda

4 Author List:

5 Megan L Swanson, MD, MPH (corresponding author)
6 UCSF Department of Obstetrics and Gynecology, Division of Gynecologic Oncology
7 University of California at San Francisco
8 Mission Hall, 7th Floor, Room 7444, Box 0132
9 550 16th St; San Francisco, CA 94158
10 Cell phone: 650-387-2828
11 Work: 415-885-7561
12 megan.swanson@ucsf.edu

13
14 Miriam Nakalembe, MBChB, MMed (contributing author)
15 Makerere University College for Health Sciences School of Medicine, Department of
16 Obstetrics and Gynaecology
17 Infectious Disease Institute, Makerere University College of Health Sciences

18
19 Lee-may Chen, MD (contributing author)
20 UCSF Department of Obstetrics and Gynecology, Division of Gynecologic Oncology
21 University of California at San Francisco

22
23 Stefanie M Ueda, MD (contributing author)
24 UCSF Department of Obstetrics and Gynecology, Division of Gynecologic Oncology
25 University of California at San Francisco

26
27 Jane Namugga, MBChB, MMed (contributing author)
28 Division of Gynaecologic Oncology
29 Mulago National Referral Hospital

30
31 Carol Nakisige, MBChB, MMed (contributing author)
32 Division of Gynaecologic Oncology
33 Uganda Cancer Institute

34
35 Megan J Huchko, MD, MPH (senior author)
36 Duke Department of Obstetrics and Gynecology and the Global Health Institute
37 Duke University

38
39 Funding: NIH Research Training Grant #D43 TW009343 funded by the Fogarty
40 International Center, as well as the University of California Global Health Institute

41 **Abstract**

42 *Purpose:* Cervical cancer is the most common malignancy among women in Uganda.
43 Most present with advanced disease, when hysterectomy is not possible and cure is
44 less likely. This study reports the proportion recommended for hysterectomy and
45 associated factors, recommended treatments by stage, and treatment uptake.

46 *Methods:* We conducted a prospective study among patients seeking care for cervical
47 cancer at public referral hospitals in Uganda. In-person surveys were followed by a
48 phone call. Descriptive and multivariate statistical analyses examined associations
49 between predictors and outcomes.

50 *Results:* Among 268 participants, 76% were diagnosed at an advanced stage (IIB-IVB).
51 In total, 12% were recommended for hysterectomy. In adjusted analysis, living within 15
52 kilometers of Kampala (OR 3.10, 95% CI 1.20-8.03) and prior screening (OR 2.89, 95%
53 CI 1.22-6.83) were significantly associated with surgical candidacy. Radiotherapy
54 availability was not significantly associated with treatment recommendations for early-
55 stage (IA-IIA) disease, but was associated with recommended treatment modality
56 (chemo-radiation versus primary chemotherapy) for locally advanced stage (IIB-IIIIB).
57 Most (67%) had started treatment. No demographic or health factor, treatment
58 recommendation, or radiation availability was associated with treatment initiation.
59 Among those recommended for hysterectomy, 55% underwent surgery. Among those
60 who had initiated treatment, 82% started the modality that was actually recommended.

61 *Conclusion:* Women presented to public referral centers in Kampala with mostly
62 advanced-stage cervical cancer and few were recommended for surgery. Lack of
63 access to radiation did not significantly increase the proportion of early-stage cancers
64 recommended for hysterectomy.

65

66

67 **Introduction**

68 Cervical cancer is the fourth most-common cancer among women worldwide: 570,000
69 new cases and 311,000 deaths estimated in 2018.¹ Cervical cancer is over-represented
70 in low- and middle-income countries (LMICs); the highest incidence and mortality rates
71 are in Southern and Eastern Africa. In Uganda, cervical cancer is the most common
72 malignancy and responsible for the greatest cancer-related mortality among women.²
73 While population-based cytologic screening has dramatically reduced incidence in high-
74 income countries, incidence and mortality have risen in LMICs like Uganda,³ where less
75 than 5% of women have ever been screened.⁴

76 In Uganda, most women with cervical cancer are diagnosed in an advanced stage,⁵
77 although poor record keeping affects the accuracy of estimates. The Kampala Cancer
78 Registry lacked stage data for half of the 261 cervical cancer cases reported in a 3-year
79 period; 73% of the remaining cases were Stage II+.⁶ As a result, 5-year overall survival
80 for all cervical cancer cases is approximately 18%.⁷ Cervical cancer, especially early-
81 stage, is potentially curable with surgery and/or radiation with or without chemotherapy,
82 but multi-system obstacles often block access to treatment.⁸

83 Challenges to accessing surgery include limited specialty surgical training,^{9,10} few
84 anesthesia providers,^{11,12} and a lack of sufficient banked blood.¹³ Access to radiation,
85 gold-standard treatment for bulky early-stage disease and loco-regionally advanced
86 cervical cancer, is limited in sub-Saharan Africa;¹⁴ Uganda is no exception.¹⁵ After the
87 single functioning radiation machine was determined broken beyond repair in March
88 2016, Uganda was without radiotherapy until the new cobalt machine was inaugurated
89 January 2018. During this time, patients had to travel to neighboring Kenya to access

90 radiation. Chemotherapy is provided free of charge at government facilities, but
91 shortages are frequent.¹⁶

92 Most care for cervical cancer in Uganda is provided at two specialty public hospitals:
93 Mulago National Referral Hospital (MNRH), and the Uganda Cancer Institute (UCI).
94 Clinical consultations are free of charge; there are nominal fees associated with
95 radiotherapy and surgery. In response to the challenges obtaining radiotherapy 2016-
96 2018, providers at UCI and MNRH developed a protocol for treating locally and
97 regionally-advanced cervical cancer with neoadjuvant chemotherapy followed by
98 possible radical hysterectomy, an evidence-based strategy supported by the American
99 Society of Clinical Oncology (ASCO) Resource-stratified Treatment Guidelines.¹⁷⁻²⁰

100 The ASCO Resource-stratified Treatment Guidelines also suggest a broader role for
101 hysterectomy for cervical cancer in settings without access to radiation. While radical
102 hysterectomy is a theoretical consideration for stage IA2 to IIA2, in maximally-resourced
103 settings, chemoradiation is the preferred treatment modality for women with stage IB2 to
104 IIA2 disease given equivalent outcomes with less morbidity.²¹ In settings without
105 radiotherapy, primary treatment with hysterectomy may be considered as an alternative
106 for women with stage IB2 to IIA2 disease.¹⁷

107 We sought to describe the presentation of cervical cancer at MNRH and UCI in
108 Kampala, Uganda, specifically the proportion of patients recommended for
109 hysterectomy (simple or radical) at the time of diagnosis, and factors associated with
110 surgical candidacy. We also sought to describe primary treatment recommendations,
111 utilization patterns and factors associated with successful treatment uptake, in the
112 context of variably available treatments.

113

114 **Methods**

115 From April 2017 through September 2018, we surveyed women over 18 years old
116 presenting to care at either of two government-sponsored referral hospitals (MNRH and
117 UCI) with a new diagnosis of cervical cancer and invited participation in baseline and
118 follow-up surveys. This analysis is part of a larger study examining patterns of delay in
119 accessing treatment.

120 Research assistants approached women in clinic and invited them to participate.

121 Interested participants were screened for eligibility. Women >18 years old able to
122 understand English or Luganda with a histopathologic diagnosis of primary cervical
123 cancer and a clinical stage assigned by a gynecologist in the gynecologic oncology
124 division at MNRH or UCI were eligible to participate. Participation was voluntary and
125 participants were reimbursed in part for their travel expenses (20,000 UGX,
126 approximately US\$5). Individual informed consent was obtained.

127 Part one of the survey was administered in the clinic. Research assistants collected
128 demographic and basic health information, including a reproductive health history from
129 participants before collecting information about each individual's journey to care. This
130 quantitative survey was adapted from a validated survey instrument to measure time
131 intervals and factors correlated with delay in accessing breast cancer care.²² Minor
132 modifications were made in order to map the survey onto the Model of Pathways to
133 Treatment, a theoretical model adapted from the Andersen Model for understanding and
134 describing the process of obtaining diagnosis and treatment for cancer,²³⁻²⁵ and to make

135 the questions specific to cervical cancer. Participants' medical records were used to
136 corroborate information on the histology, stage and grade of cervical tumors as well as
137 the dates of the biopsy, staging exam and referral for treatment. Research assistants
138 were in present in clinic and recruiting about 50% of the time during the study period.
139 Follow-up contact information was obtained. A telephone survey regarding treatment
140 initiation was administered a minimum of four weeks and up to three months after the
141 initial interview. Those who had not been able to access treatment were offered a
142 follow-up visit and/or directions for follow-up in radiation oncology, medical oncology, or
143 palliative care, as appropriate.

144 Survey data was captured on tablets using Open Data Kit (ODK) software
145 (<https://opendatakit.org>).²⁶ Data were uploaded daily and aggregated on a secure
146 server.

147 This study was reviewed and approved by institutional review boards at MNRH, UCI
148 and the University of California at San Francisco. The informed consent document and
149 the survey were translated into Luganda; English is the official language of instruction at
150 Makerere University College of Medical Sciences. Written informed consent documents
151 were obtained from all participating survey responders.

152 To calculate our sample size, we assumed that if 20% of women with cervical cancer in
153 Uganda were diagnosed with early-stage (I-IIA) cervical cancer, a total of 265 women
154 would allow us to experimentally determine this proportion within 5% (confidence level
155 95%). As hysterectomy would be a theoretical treatment option for those with stage IA-

156 IIA, this was also the theoretical proportion of surgical candidates, our primary outcome.
157 We thus aimed to include at least 265 patients using consecutive sampling techniques.
158 Our primary outcome variable, surgical candidacy, was defined as a recommendation
159 for hysterectomy (simple or radical) as primary treatment. While any patient with “early-
160 stage” (IA to IIA) disease may have been considered for hysterectomy, we used the
161 physician’s actual recommendation, after clinical assessment, to define “candidacy.”
162 Any “late-stage” (IIB to IVB) patients recommended for surgery were dropped, as this
163 would likely be a recommendation for a palliative surgery, not definitive primary therapy
164 with curative intent. Treatment initiation, our other outcome variable, was defined by a
165 participant self-reporting starting any treatment, including hospice.

166 To test for associations between categorical outcome variables (surgical candidacy and
167 treatment initiation) and categorical explanatory variables, we performed chi-square
168 tests and Fisher’s exact tests. For continuous explanatory predictors, we used two
169 independent sample t-tests to compare sample means by outcome. We used logistic
170 regression to explore the association of demographic and reproductive health variables
171 with these outcomes. Factors theorized to be associated with the outcomes or those
172 found to be significantly associated in bivariate analysis were considered for multivariate
173 analysis. Because only those with early stage disease could be surgical candidates (see
174 above), the variables were not independent; thus, we could not adjust analysis of
175 surgical candidacy for stage. All data were analyzed using Stata version 14.0 (Stata
176 Corporation, College Station, TX). P values less than 0.05 were considered statistically
177 significant.

178

179 **Results**

180 From April 2017 through September 2018, 332 women were screened and ultimately
181 268 participated (see Figure 1). Among participants, 233 (87%) initially presented with
182 symptoms. Most women, (N=204, 76%) were diagnosed at an advanced stage (IIB to
183 IVB) and these women, compared to those with early-stage (IA1 to IIA) disease (N=64,
184 24%), were more likely to present with symptoms including bleeding, discharge, pain or
185 fatigue (OR 2.44, 95% CI 1.16-5.14) rather than through routine screening. About half of
186 those with early-stage disease were recommended to undergo hysterectomy as primary
187 treatment (N=33, 52% of those with early-stage disease, 12% of total).

188 In unadjusted analysis, living in or within 15 kilometers of Kampala (OR 3.38, 95% CI
189 1.60-7.13), current use of modern family planning (OR 3.98, 95% CI 1.26-12.49) and
190 history of prior screening (OR 2.85, 95% CI 1.34-6.03) were associated with a
191 recommendation for surgery. In multivariate analysis, living within 15 kilometers of
192 Kampala (OR 3.10, 95% CI 1.20-8.03) and prior screening (OR 2.89, 95% CI 1.22-6.83)
193 remained significantly associated with a recommendation for surgery as primary
194 treatment (see Table 1).

195 Recommended treatments varied by stage, as expected. We hypothesized that
196 recommendations may also vary by availability of radiation therapy (see Table 2).
197 Almost two-thirds of the participants (N=167, 62%) presented for care at a time when no
198 in-country external beam radiation was available, compared to 101 participants (38%)
199 who received treatment recommendations after the new machine was commissioned.

200 Most women with stage IA1 to IB1 disease (N=35) were recommended for surgery
201 regardless of availability of in-country radiation (N=32, 92%). Among women with stage
202 IB2-IIA disease (N=29), only one was recommended to undergo hysterectomy and this
203 was when the radiation machine was broken down. Surprisingly, chemotherapy (likely
204 neoadjuvant) was recommended as the primary treatment to most of those with IB2-IIA
205 disease, regardless of availability of radiation (19/29, 66% overall; 75% when radiation
206 machine broken down versus 54% when machine working, OR 2.57, 95% CI 0.53-
207 12.38).

208 However, for women with locally advanced disease (stage IIB-IIIB), absence of in-
209 country radiation was associated with significantly higher odds of a recommendation for
210 chemotherapy (OR 15.43, 95% CI 7.16-33.25) and lower odds of a recommendation for
211 chemoradiation (OR 0.06, 95% CI 0.03-0.13). Few women (N=14) had stage IV disease
212 and none of these women were recommended for radiation when the machine was
213 down. Only two participants, both stage IV, were recommended to start hospice.

214 We obtained follow-up information for 264 of the 268 participants. Nine women died
215 before starting treatment. Among the 255 living women reached for phone interview,
216 170 (67%) had initiated some treatment. No demographic or health or cancer-related
217 variables (including treatment recommendations and radiation availability) were
218 associated with treatment initiation in univariate analysis (see Table 3). Given lack of
219 association, multivariate analysis was not performed.

220 Of the 33 women recommended to undergo hysterectomy, 55% actually had surgery,
221 another 15% started other treatment modalities and the remaining 30% had not started
222 any treatment (see Fig 2; of note, one woman stage IB1 who was recommended for

223 chemotherapy ultimately had a hysterectomy). Among the 170 women who started
224 treatment, most (N=140, 82%) of them started the treatment modality that was actually
225 recommended. Only young age (< 50 years) was associated with higher odds of starting
226 the recommended treatment (OR 1.84, 95% CI 1.11-3.07); there was no association
227 with any other demographic or health or cancer-related factors (including stage,
228 treatment recommendations, and radiation availability).

229 Of the 85 participants who had not started treatment, 71 (84%) planned to start. The
230 most commonly reported reasons for delay were financial constraints (69%) and long
231 wait times (30%). For the subset of these women recommended for hysterectomy
232 (N=8), the most common reasons for delay were the same: financial constraints (50%)
233 and perceived long wait (37.5%). For the 14 participants not planning to start any
234 treatment or hospice, the most common reasons were pursuing alternative or traditional
235 methods (57%) and/or financial constraints (50%). Two of these 14 had been
236 recommended for hysterectomy, one cited “a long queue” and the other distrust of
237 treatment recommendation as the reason for not pursuing treatment.

238

239 **Discussion**

240 In this cohort of women with cervical cancer presenting at referral centers in Kampala,
241 Uganda, three-quarters presented at an advanced stage (IIB-IVB), and only 12% were
242 recommended to undergo hysterectomy. Overall, treatment recommendations were in-
243 line with the ASCO Resource-Stratified Clinical Practice Guideline.¹⁷ The significance of
244 the availability of radiation in Uganda on treatment recommendations seemed to vary

245 based on stage, though the study was underpowered to assess these effects by
246 subgroup.

247 This study adds to the epidemiology of cervical cancer in the region and is the first study
248 in the region to report on proportion of newly diagnosed cervical cancer patients
249 recommended for hysterectomy. The proportion of participants presenting at late stage
250 (IIB-IVB), 76%, is similar to 20 year-old estimates from the Kamala Cancer Registry,⁶ as
251 well as to more recent regional estimates from Northern Uganda,⁵ Ghana,²⁷ and
252 Rwanda.²⁸ Given the lack of national screening and nascent HPV vaccination efforts, it
253 is unsurprising that the proportion of late stage disease is unchanged over the last two
254 decades in Uganda.

255 As expected, women with early-stage disease were more likely to be assessed as
256 surgical candidates. Although radical hysterectomy is a theoretical consideration for
257 stage IB2-IIA disease, chemoradiation, when available, is preferred. We expected more
258 of these women to be recommended for primary surgery when the radiation machine
259 was out of commission. In this subset (stage IB2-IIA), there was a non-significant trend
260 to increased recommendation for radical hysterectomy during the time without in-
261 country radiation, though the study was underpowered to assess this impact. Although
262 large tumors (>4cm) are not necessarily associated with increased complications
263 among experienced surgeons,^{21,29} newly trained providers with limited resources
264 including a lack of equipment and cross-matched blood may not be eager to offer
265 radical hysterectomy to stage IB2-IIA patients.

266 Surprisingly, the majority of the women stage IB2-IIA were recommended for
267 chemotherapy (likely neoadjuvant), regardless of the availability of radiation. As

268 chemoradiation is the preferred modality, we would have expected more of these
269 women to be referred for radiation when the new machine was operational. Availability
270 is not synonymous with accessibility; prior to discontinuation, the old machine, despite
271 running 20 hours per day, was meeting just 2.6% of the nation's indicated radiation
272 treatments.^{14,15} Alternatively, it is possible a perception of success resulted in a
273 continuation of the practice pattern of neoadjuvant chemotherapy. These data are
274 forthcoming.

275 Two-thirds of women in the current study had initiated treatment; neither stage,
276 recommended treatment, nor radiation availability predicted treatment initiation.
277 Disappointingly, only 55% of the women recommended for curative hysterectomy were
278 able to undergo surgery. Women unable to access hysterectomy reported the same
279 challenges as women recommended for chemoradiation or chemotherapy.

280 There are comparable regional data on radiation acquisition. A survey from rural
281 Rwanda reported that 80% of the cervical cancer patients at the Butaro Cancer Center
282 of Excellence (BCCOE) who were referred to UCI for chemoradiation (there is no
283 available radiation in Rwanda) were able to access treatment.²⁸ This high proportion of
284 treatment acquisition contrasts our findings that women were generally unable to
285 access out-of-country radiation. As expected, in our study, women with locally advanced
286 disease (stage IIB-IIIB) were less likely to be recommended for standard-of-care
287 chemoradiation when there was no available in-country radiation. For those
288 recommended to undergo chemoradiation in Kenya, when the radiation machine in
289 Uganda was down (N=15), only two of them reported actually starting chemoradiation,

290 whereas when the Kampala-based machine was working, two-thirds of women were
291 able to access this treatment.

292 The most commonly cited reason for failing to access treatment, including curative
293 hysterectomy, financial hardship, is difficult for the under-funded public health sector to
294 modify. Clinical consultations are free of charge and there are nominal fees associated
295 with radiation, surgery, labs and imaging. The second-most cited reason, long wait
296 times, implies an unmet need for treatment, including radical hysterectomies. As the
297 burden of cancer shifts to LMICs, a re-calibrated response from the international
298 community is necessary to substantially increase funding for capacity building and
299 training opportunities for local clinicians as well as for sufficient equipment and supplies
300 to enable oncologic surgery, radiation and chemotherapy.³⁰

301 Generally speaking, most participants had previously heard of cervical cancer, similar to
302 reports from Northern Uganda,³¹ but neither knowledge nor knowing someone with
303 cervical cancer was associated with surgical candidacy or successful treatment
304 initiation. Thus, education efforts designed to increase awareness of cervical cancer
305 would not likely increase the proportion of women diagnosed at an early stage in
306 absence of screening and referral services.

307 This study highlights the prevalence of late presentation to cervical cancer care and
308 suggests that distance from treatment facilities and general poor access to care (as
309 evidenced by lack of prior screening) affect women's eligibility for curative surgery.
310 These risks are difficult to modify, but suggest that either disseminating specialty cancer
311 care beyond large urban centers, as the Rwandan Ministry of Health did with the

312 BCCOE, or strengthening the referral system between rural health centers and the
313 referral hospitals may improve timeliness to care.

314 While this study provides a snapshot of cervical cancer epidemiology, treatment
315 recommendations and uptake, the population is a convenience sample of women who
316 were able to access care at referral centers, limiting generalizability. The study
317 population likely represents a conservative estimate of those at a late stage at time of
318 presentation and likely over-estimates the proportion of women nationally who may be
319 surgical candidates at the time of diagnosis. The myriad challenges associated with
320 providing cancer treatment including lack of available operating theaters, surgical
321 equipment, anesthesiologists, and trained surgeons for early-stage disease as well as a
322 lack of radiation, chemotherapy, and radiation and medical oncologists for late-stage
323 disease, underscore the need to expand prevention and screening opportunities in
324 Uganda.

325 Further research is needed to assess when and why women experience delay in
326 accessing care. Additionally, hospice and palliative care, though widely available in
327 Uganda and subsidized, seemed to be poorly utilized. Given the substantial proportion
328 of women presenting at late stage, the nine women who died before accessing the
329 recommended treatment as well as the significant proportion of women who were not
330 able to access any treatment, hospice is likely an appropriate treatment strategy for
331 many women. Future research is needed to understand barriers specific to uptake of
332 palliative care and hospice.

333 While decreasing the incidence of cervical cancer will only be possible by expanding
334 vaccination and screening opportunities, efforts to improve earlier detection and

335 diagnosis, expand accessibility of surgery, radiation and chemotherapy, and integrate
336 palliative care into standard treatment are essential to decrease mortality, morbidity and
337 suffering among women with cervical cancer.

338

339 **Acknowledgments** to data collection team: Najjemba Irene, Najjemba Beatrice,
340 Nakadu Laurant, Nankya Esther

341
342 **Author Contributions:**

343
344 Conception and design: Swanson, Nakalembe, Chen, Huchko

345
346 Administrative support: Nakalembe, Namugga, Nakisige

347
348 Provision of study materials or patients: Nakalembe, Namugga, Nakisige

349
350 Collection and assembly of data: Swanson, Nakalembe

351
352 Data analysis and interpretation: Swanson, Huchko

353
354 Manuscript writing: All

355
356 Final approval of manuscript: All

357
358 Accountable for all aspects of this work: All

359
360
361 **Figure Legends**

362
363
364 Table 1: Characteristics of women diagnosed with cervical cancer by surgical
365 candidacy. Surgical candidacy is defined as a recommendation for surgery (simple
366 versus radical hysterectomy) after evaluation by a gynecologist at UCI or MNRH. We
367 eliminated one participant with stage IIB disease who reported a recommendation for
368 primary surgery as this was unlikely a recommendation for a curative hysterectomy
369 (radical versus simple). Non-surgical candidates were recommended for primary
370 treatment with chemoradiation, chemotherapy or hospice. The multivariate model was
371 adjusted for age, education, distance, urban residence, marital status, parity, family
372 planning use, history of prior screening, and HIV serostatus. Abbreviations: UCI,

373 Uganda Cancer Institute; MNRH, Mulago National Referral Hospital; km, kilometers;
374 HIV, Human Immunodeficiency Virus; CI, confidence interval; CA, cancer.

375

376 Table 2: Treatment recommendations by stage and availability of in-country radiation.

377 In-country radiation availability was determined by date of diagnosis and whether the

378 new cobalt machine was functional at that time. All patients recommended for external

379 beam radiation were also recommended to have concurrent chemo-sensitization,

380 typically with weekly cisplatin 40mg per square-meter concurrent with external beam

381 pelvic radiation to a total of 4500cGy in 25 fractions. Participants recommended for

382 chemotherapy may have been either a neoadjuvant approach or a palliative approach,

383 especially for metastatic disease. Chemotherapy would typically be doublet therapy with

384 cisplatin 75mg per square-meter and paclitaxel 135-175mg per square-meter.

385 Abbreviations: RT, radiation; mg, milligrams.

386

387 Figure 1: Study Flow Diagram. This flowchart depicts the treatment uptake patterns of

388 study participants. It shows what treatments the patients who had NOT yet started

389 treatment were recommended for by whether or not they planned to uptake treatment

390 and the actual treatments started by women according to whether they started a

391 recommended, versus other, treatment modality. Further details regarding

392 recommendations by stage are available in Table 2 and Figure 2. Abbreviations: UCI,

393 Uganda Cancer Institute; MNRH, Mulago National Referral Hospital.

394

395 Table 3: Characteristics of participants with cervical cancer by whether or not they have
396 started treatment. “Treatment” refers to any treatment (surgery, chemoradiation,
397 chemotherapy, hospice), whether it was the recommended treatment or a different
398 modality. The table excludes the nine women who died by the time their contacts were
399 reached for follow-up (four had been recommended for chemotherapy, four for
400 chemoradiation and one for hospice) and the four who were unable to be reached. A
401 multivariate analysis was not performed given lack of association in unadjusted
402 analysis. Abbreviations: UCI, Uganda Cancer Institute; MNRH, Mulago National
403 Referral Hospital; km, kilometers; RT, radiation; HIV, Human Immunodeficiency Virus;
404 CI, confidence interval; CA, cancer.

405
406 Figure 2: This flowchart depicts treatment recommendations and treatment uptake for
407 women with early-stage disease (IA1 to IIA at time of diagnosis), especially those
408 recommended for hysterectomy. The flowchart shows whether or not treatment was
409 initiated by recommendation for hysterectomy or other treatment. The chart goes on to
410 show the treatments actually started, whether or not these were the recommended
411 treatments. The chart also shows, for those who had NOT yet started treatment,
412 whether or not they planned to undergo treatment, by initial recommendation. The chart
413 shows that a total of 19 women with early-stage disease ultimately underwent
414 hysterectomy, though only 18 of these women had initially been recommended for
415 hysterectomy. No abbreviations.

416
417

418

419 Table 1: Characteristics of women diagnosed with cervical cancer by surgical candidacy
420

Variable	Total N	Surgical candidates* %	Not surgical candidates** %	Unadjusted Odds Ratio of surgical candidacy (95% CI)	Adjusted*** Odds Ratio of surgical candidacy (95% CI)
Total (N, %)	N=267	N=33 (12%)	N=204 (88%)		
Age, dichotomous					
>= 50 years	123	11	89	1.0	1.0
< 50 years	133	14	86	1.30 (0.62-2.72)	0.94 (0.36-2.48)
Education					
< primary	110	9	91	1.0	1.0
≥ primary	151	15	85	1.80 (0.82-3.95)	1.40 (0.57-3.44)
Occupation					
Industry/business	92	12	88	1.0	****
Farming/domestic	175	13	87	1.06 (0.49-2.29)	****
Distance to MNRH/UCI					
> 15m	181	8	92	1.0	1.0
<= 15km	86	22	78	3.38 (1.60-7.13)	3.10 (1.20-8.03)
Urban versus rural					
Rural	125	9	91	1.0	1.0
Urban	142	15	85	1.90 (0.88-4.09)	1.15 (0.42-3.10)
Marital status					
Single/divorced /widowed	146	10	90	1.0	1.0
Married	121	16	84	1.76 (0.84-3.67)	1.26 (0.54-2.95)
Parity					
≤ 6	157	13	87	1.0	1.0
> 6	110	12	88	0.92 (0.44-1.93)	1.35 (0.51-3.51)
Family Planning					
No method	251	11	89	1.0	1.0
Using a method	15	33	67	3.98 (1.27-12.49)	2.44 (0.61-9.76)
Prior Screening					
No prior screening	199	9	91	1.0	1.0
History prior screening	68	22	78	2.85 (1.34-6.03)	2.89 (1.22-6.83)
HIV serostatus					
HIV -	179	13	87	1.0	1.0
HIV +	82	11	89	0.84 (0.37-1.90)	0.52 (0.18-1.45)
Previously heard of cervical cancer					
Never heard	58	10	90	1.0	****
Heard of cervix CA	209	13	87	1.29 (0.50-3.28)	****
Know friend/family with cervical cancer					
Don't know	214	12	88	1.0	****
Know friend/family	53	13	87	1.10 (0.45-2.69)	****

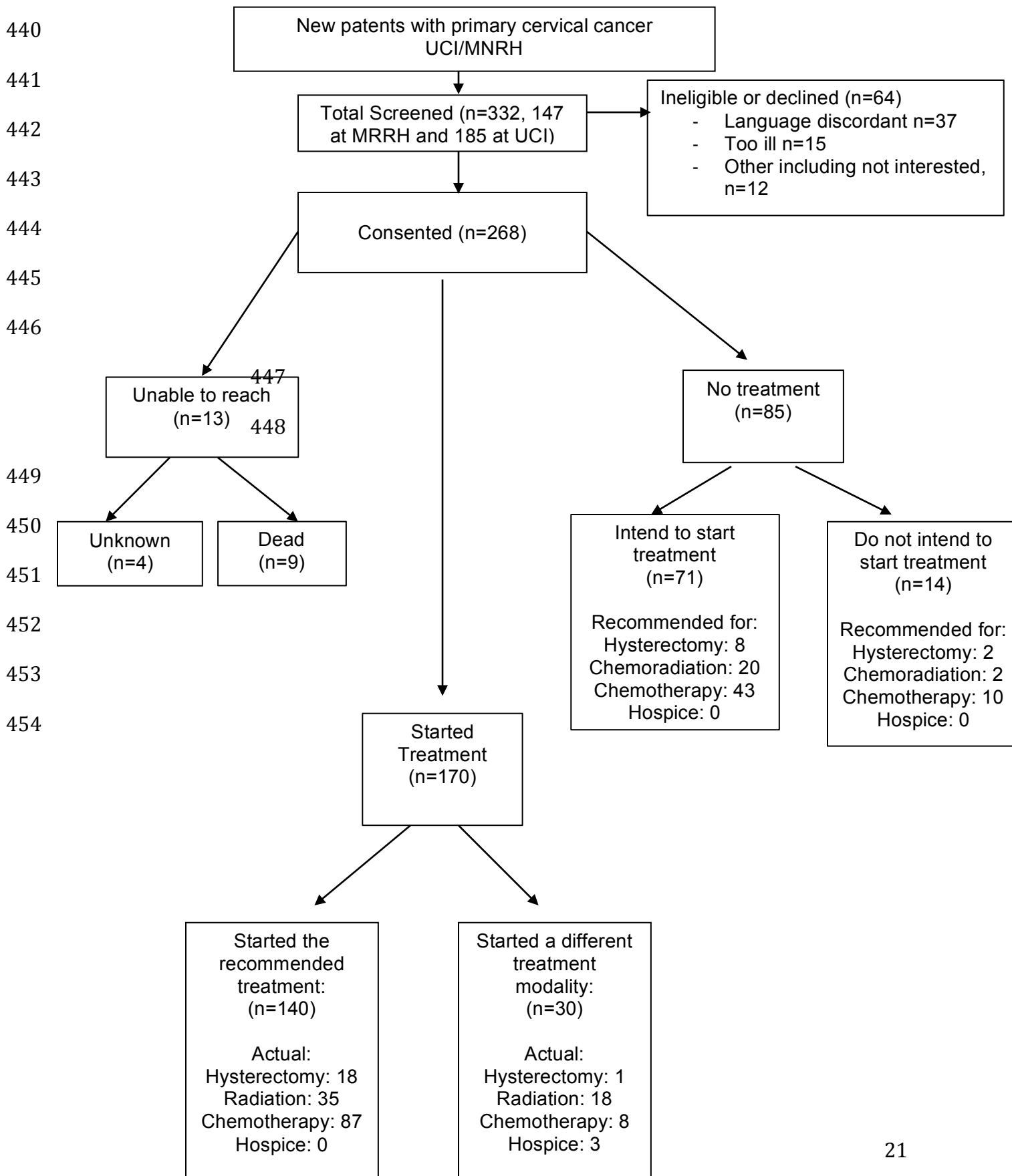
421 * As recommended by specialists at UCI/MNRH; eliminating one women stage IIB who reported a
422 recommendation for surgery
423 ** Recommended for primary treatment with chemoradiation, chemotherapy or hospice
424 ***Adjusted for age, education, distance, urban residence, marital status, parity, family planning use, history
425 of prior screening, and HIV serostatus
426 **** Not included in the multivariate model
427

428 Table 2: Treatment recommendations by stage and availability of radiation
 429

Stage at Presentation	Radiation Availability	Surgery	Chemoradiation*	Chemotherapy**	Hospice
IA1-IB1 N=35	No RT available (N=23)	21 (92%)	1 (4%)	1 (4%)	0
	RT available (N=12)	11 (92%)	0	1 (8%)	0
IB2-IIA N=29	No RT available (N=16)	1 (6%)	3 (19%)	12 (75%)	0
	RT available (N=13)	0	6 (46%)	7 (54%)	0
IIB-IIIB N=190	No RT available (N=119)	1 (1%)	11 (9%)	107 (90%)	0
	RT available (N=71)	0	45 (63%)	26 (37%)	0
IVA-IVB N=14	No RT available (N=9)	0	0	8 (89%)	1 (11%)
	RT available (N=5)	0	2 (40%)	2 (40%)	1 (20%)

430
 431 *All patients recommended for external beam radiation were also recommended to have
 432 concurrent weekly chemo-sensitization with cisplatin 40mg per square-meter concurrent
 433 with external beam pelvic radiation, 4500cGy in 25 fractions
 434 **Chemotherapy recommended as primary modality, either in neoadjuvant setting
 435 (stage IB1 – IIIB) or for distant metastases (stage IV). Doublet therapy with cisplatin
 436 75mg per square-meter and paclitaxel 135-175mg per square-meter every three weeks
 437 was the standard recommended regimen.
 438

439 **Figure 1: Study Flow Diagram**



455 Table 3: Characteristics of participants by whether or not they had started treatment

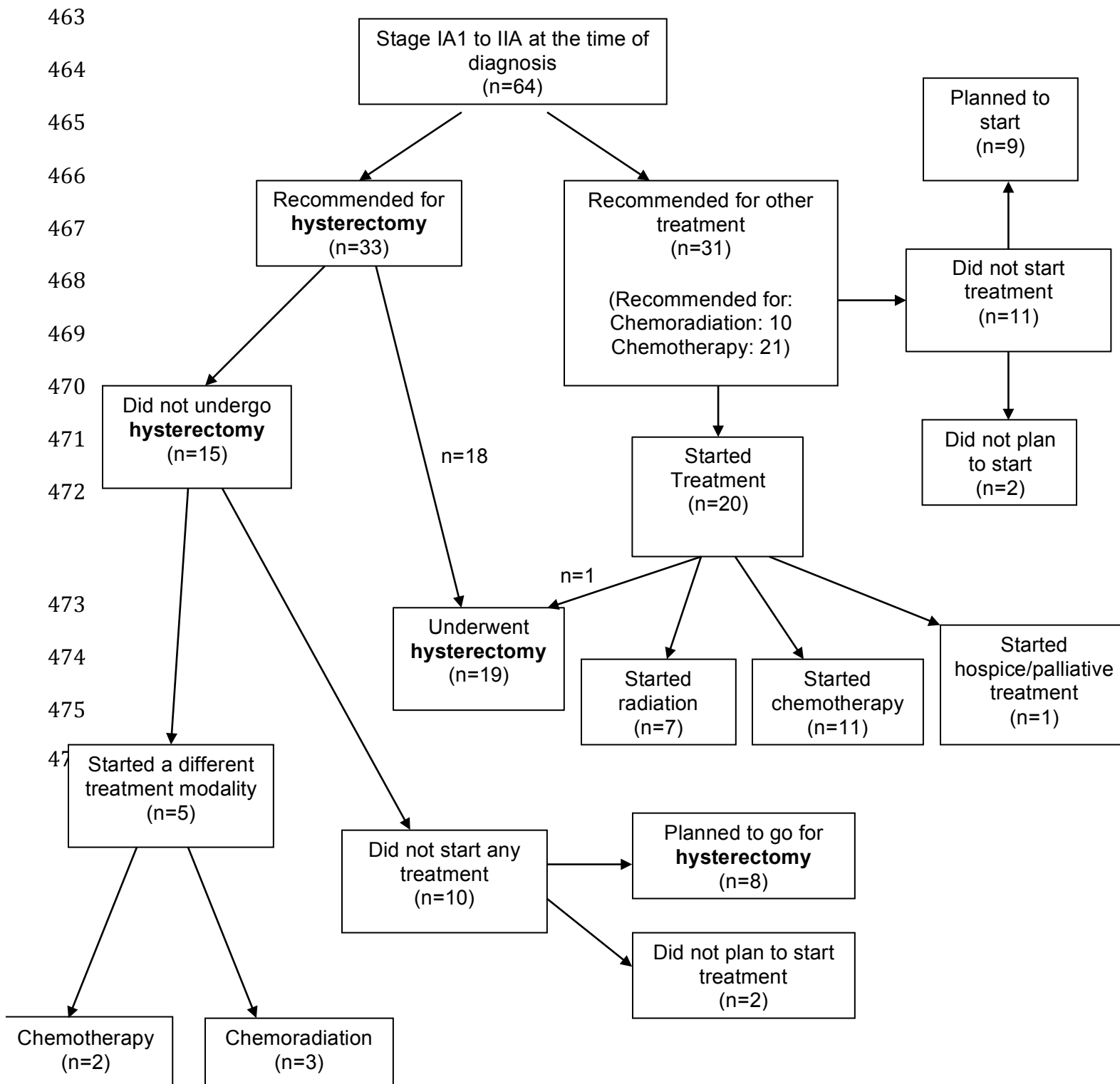
Variable	Total N	No treatment %	Started treatment %	Unadjusted Odds Ratio of Treatment initiation (95% CI)
Total (N, %)*	N=255	N= 85 (33%)	N= 170 (67%)	
Age, dichotomous				
>= 50 years	115	34	66	1.0
< 50 years	129	32	68	1.10 (0.64-1.88)
Education				
< primary	106	28	72	1.0
≥ primary	143	36	64	0.69 (0.40-1.19)
Occupation				
Industry/business	90	31	69	1.0
Farming/domestic	165	35	65	0.86 (0.49-1.48)
Distance from MNRH/UCI				
<= 15km	84	27	73	1.51 (0.85-2.67)
> 15m	171	36	64	1.0
Urban versus rural				
Rural	118	37	63	1.0
Urban	137	30	70	1.39 (0.83-2.35)
Marital status				
Single/divorced/widowed	138	37	63	1.0
Married	117	29	71	1.43 (0.84-2.42)
Parity				
≤ 6	148	38	63	1.0
> 6	107	27	73	1.64 (0.95-2.81)
Family Planning				
No method	239	33	67	1.0
Using a method	15	33	67	0.99 (0.33-2.99)
Prior Screening				
None prior	189	33	67	1.0
History prior screening	66	33	67	1.0 (0.55-1.81)
HIV serostatus				
HIV -	170	34	66	1.0
HIV +	79	30	70	1.16 (0.65-2.06)
Early stage at diagnosis				
Stage IIB-IVA	191	34	66	1.0
Stage IA1-IIA	64	33	67	1.03 (0.57-1.88)
Previously heard of cervical cancer				
Never heard	57	33	67	1.0
Heard of cervix CA	198	33	67	1.0 (0.54-1.87)
Know friend/family with cervical cancer				
Don't know	205	32	68	1.0
Know friend/family	50	40	60	0.70 (0.37-1.32)
Radiation machine working at time of diagnosis				
RT not available	159	32	68	1.0
RT available	96	35	65	0.86 (0.50-1.47)
Recommended treatment modality				
Surgery	33	30	70	1.0

Chemotherapy	159	33	67	0.83 (0.37-1.87)
Chemoradiation	61	36	64	0.74 (0.30-1.82)

456
457
458
459
460

* Excluding 9 women who died by the time their contacts were reached for follow-up (4 had been recommended for chemotherapy, 4 for chemoradiation and 1 for hospice) and 4 who were unable to be reached.

461 **Figure 2: Treatment recommendations and uptake for women with early-stage**
 462 **disease, especially those recommended for hysterectomy**



477 References

478

- 479 1. Bray F, Ferlay J, Soerjomataram I, et al: Global cancer statistics 2018:
480 GLOBOCAN estimates of incidence and mortality worldwide for 36 cancers in 185
481 countries. *CA Cancer J Clin* 68:394-424, 2018
- 482 2. Bruni L B-RL, Albero G, Aldea M, Serrano B, Valencia S, Brotons M, Mena M,
483 Cosano R, Muñoz J, Bosch FX, de Sanjosé S, Castellsagué X: Human Papillomavirus and
484 Related Diseases in Uganda. Summary Report 2016-02-26, ICO Information Centre on HPV
485 and Cancer (HPV Information Centre), 2016
- 486 3. Wabinga HR, Nambooz S, Amulen PM, et al: Trends in the incidence of
487 cancer in Kampala, Uganda 1991-2010. *Int J Cancer* 135:432-9, 2014
- 488 4. Ndejjo R, Mukama T, Musabyimana A, et al: Uptake of Cervical Cancer
489 Screening and Associated Factors among Women in Rural Uganda: A Cross Sectional Study.
490 *PLoS One* 11:e0149696, 2016
- 491 5. Mwaka AD, Garimoi CO, Were EM, et al: Social, demographic and healthcare
492 factors associated with stage at diagnosis of cervical cancer: cross-sectional study in a
493 tertiary hospital in Northern Uganda. *BMJ Open* 6:e007690, 2016
- 494 6. Wabinga H, Ramanakumar AV, Banura C, et al: Survival of cervix cancer
495 patients in Kampala, Uganda: 1995-1997. *Br J Cancer* 89:65-9, 2003
- 496 7. Gondos A, Brenner H, Wabinga H, et al: Cancer survival in Kampala, Uganda.
497 *Br J Cancer* 92:1808-12, 2005
- 498 8. Sullivan R, Alatisse OI, Anderson BO, et al: Global cancer surgery: delivering
499 safe, affordable, and timely cancer surgery. *Lancet Oncol* 16:1193-224, 2015
- 500 9. Johnston C, Ng JS, Manchanda R, et al: Variations in gynecologic oncology
501 training in low (LIC) and middle income (MIC) countries (LMICs): Common efforts and
502 challenges. *Gynecologic Oncology Reports* 20:9-14, 2017
- 503 10. Meara JG, Leather AJ, Hagander L, et al: Global Surgery 2030: evidence and
504 solutions for achieving health, welfare, and economic development. *Int J Obstet Anesth*
505 25:75-8, 2016
- 506 11. Dubowitz G, Detlefs S, McQueen KA: Global anesthesia workforce crisis: a
507 preliminary survey revealing shortages contributing to undesirable outcomes and unsafe
508 practices. *World J Surg* 34:438-44, 2010
- 509 12. Epiu I, Tindimwebwa JV, Mijumbi C, et al: Challenges of Anesthesia in Low-
510 and Middle-Income Countries: A Cross-Sectional Survey of Access to Safe Obstetric
511 Anesthesia in East Africa. *Anesth Analg* 124:290-299, 2017
- 512 13. Lund TC, Hume H, Allain JP, et al: The blood supply in Sub-Saharan Africa:
513 needs, challenges, and solutions. *Transfus Apher Sci* 49:416-21, 2013
- 514 14. Abdel-Wahab M, Bourque JM, Pynda Y, et al: Status of radiotherapy resources
515 in Africa: an International Atomic Energy Agency analysis. *Lancet Oncol* 14:e168-75, 2013
- 516 15. Datta NR, Samiei M, Bodis S: Radiation therapy infrastructure and human
517 resources in low- and middle-income countries: present status and projections for 2020.
518 *Int J Radiat Oncol Biol Phys* 89:448-57, 2014
- 519 16. Barr R, Robertson J: Access to Cytotoxic Medicines by Children With Cancer:
520 A Focus on Low and Middle Income Countries. *Pediatr Blood Cancer* 63:287-91, 2016

- 521 17. Chuang LT, Temin S, Camacho R, et al: Management and Care of Women With
522 Invasive Cervical Cancer: American Society of Clinical Oncology Resource-Stratified Clinical
523 Practice Guideline. *Journal of Global Oncology* 2:311-340, 2016
- 524 18. Benedetti-Panici P, Greggi S, Colombo A, et al: Neoadjuvant chemotherapy
525 and radical surgery versus exclusive radiotherapy in locally advanced squamous cell
526 cervical cancer: results from the Italian multicenter randomized study. *J Clin Oncol* 20:179-
527 88, 2002
- 528 19. Chang TC, Lai CH, Hong JH, et al: Randomized trial of neoadjuvant cisplatin,
529 vincristine, bleomycin, and radical hysterectomy versus radiation therapy for bulky stage
530 IB and IIA cervical cancer. *J Clin Oncol* 18:1740-7, 2000
- 531 20. Kokka F, Bryant A, Brockbank E, et al: Hysterectomy with radiotherapy or
532 chemotherapy or both for women with locally advanced cervical cancer. *Cochrane*
533 *Database Syst Rev*:Cd010260, 2015
- 534 21. Landoni F, Maneo A, Colombo A, et al: Randomised study of radical surgery
535 versus radiotherapy for stage Ib-IIa cervical cancer. *Lancet* 350:535-40, 1997
- 536 22. Unger-Saldana K, Pelaez-Ballestas I, Infante-Castaneda C: Development and
537 validation of a questionnaire to assess delay in treatment for breast cancer. *BMC Cancer*
538 12:626, 2012
- 539 23. Scott SE, Walter FM, Webster A, et al: The model of pathways to treatment:
540 conceptualization and integration with existing theory. *Br J Health Psychol* 18:45-65, 2013
- 541 24. Walter F, Webster A, Scott S, et al: The Andersen Model of Total Patient
542 Delay: a systematic review of its application in cancer diagnosis. *J Health Serv Res Policy*
543 17:110-8, 2012
- 544 25. Andersen BL, Cacioppo JT: Delay in seeking a cancer diagnosis: delay stages
545 and psychophysiological comparison processes. *Br J Soc Psychol* 34 (Pt 1):33-52, 1995
- 546 26. Hartung C, Lerer A, Anokwa Y, et al: Open data kit: tools to build information
547 services for developing regions. Presented at the Proceedings of the 4th ACM/IEEE
548 International Conference on Information and Communication Technologies and
549 Development, London, United Kingdom, 2010
- 550 27. Dunyo P, Effah K, Udofia EA: Factors associated with late presentation of
551 cervical cancer cases at a district hospital: a retrospective study. *BMC Public Health*
552 18:1156, 2018
- 553 28. Park PH, Davey S, Fehr AE, et al: Patient Characteristics, Early Outcomes, and
554 Implementation Lessons of Cervical Cancer Treatment Services in Rural Rwanda. *J Glob*
555 *Oncol* 4:1-11, 2018
- 556 29. Machida H, Matsuo K, Furusawa A, et al: Profile of treatment-related
557 complications in women with clinical stage IB-IIB cervical cancer: A nationwide cohort
558 study in Japan. *PLoS One* 14:e0210125, 2019
- 559 30. Swanson M, Ueda S, Chen L-m, et al: Evidence-based improvisation: Facing
560 the challenges of cervical cancer care in Uganda. *Gynecologic Oncology Reports* 24:30-35,
561 2018
- 562 31. Mwaka AD, Orach CG, Were EM, et al: Awareness of cervical cancer risk
563 factors and symptoms: cross-sectional community survey in post-conflict northern Uganda.
564 *Health Expect*, 2015
- 565
- 566