

## Genetic and Epigenetic Intratumor Heterogeneity Impacts Prognosis of Lung Adenocarcinoma

Xing Hua<sup>1#</sup>, Wei Zhao<sup>2#</sup>, Angela C. Pesatori<sup>3,4</sup>, Dario Consonni<sup>4</sup>, Neil E. Caporaso<sup>5</sup>, Tongwu Zhang<sup>2</sup>, Bin Zhu<sup>1</sup>, Mingyi Wang<sup>6</sup>, Kristine Jones<sup>6</sup>, Belynda Hicks<sup>6</sup>, Lei Song<sup>6</sup>, Joshua Sampson<sup>1</sup>, David Wedge<sup>7-8</sup>, Jianxin Shi<sup>1</sup>, Maria Teresa Landi<sup>2\*</sup>

<sup>1</sup>Biostatistics Branch, Division of Cancer Epidemiology and Genetics, National Cancer Institute, NIH, DHHS, Bethesda, MD, USA

<sup>2</sup>Integrative Epidemiology Branch, Division of Cancer Epidemiology and Genetics, National Cancer Institute, NIH, DHHS, Bethesda, MD, USA

<sup>3</sup>University of Milan, Italy, Department of Clinical Sciences and Community Health

<sup>4</sup>Fondazione IRCCS Ca' Granda – Ospedale Maggiore Policlinico, Occupational Health Unit

<sup>5</sup>Occupational and Environmental Epidemiology Branch, Division of Cancer Epidemiology and Genetics, National Cancer Institute, NIH, DHHS, Bethesda, MD, USA

<sup>6</sup>Cancer Genome Research Laboratory, Leidos Biomedical Research Inc., Bethesda, MD, USA

<sup>7</sup>Big Data Institute, Old Road Campus, Oxford OX3 7LF, United Kingdom

<sup>8</sup>Oxford NIHR Biomedical Research Centre, Oxford, OX4 2PG, United Kingdom

#Co-first authors

\*Corresponding author:

Maria Teresa Landi, M.D., Ph.D.  
Senior Investigator  
Integrative Tumor Biology Branch  
Division of Cancer Epidemiology and Genetics  
National Cancer Institute, NIH  
9609 Medical Center Drive, Room 7E106  
Bethesda, MD 20892-9769  
Phone: (240) 276-7236  
[landim@mail.nih.gov](mailto:landim@mail.nih.gov)

**Key Words:** Intra-tumor heterogeneity, Lung cancer, Survival, Metastasis, Evolution, Copy number alterations, Cancer driver genes, Methylation

## **Abstract**

Intratumor heterogeneity (ITH) of genomic alterations may impact prognosis of lung adenocarcinoma (LUAD). We investigated ITH of somatic copy number alterations (SCNAs), DNA methylation, and point mutations in lung cancer driver genes in 292 tumor samples from 84 LUAD patients. We found substantial SCNA and methylation ITH, and clonal architecture analyses showed congruent evolutionary trajectories for SCNAs and DNA methylation aberrations. Interestingly, methylation ITH mapping to gene promoter areas or tumor suppressor genes was low. Moreover, ITH composed of genetic and epigenetic mechanisms altering the same cancer driver genes was found in several tumors. To quantify ITH for valid statistical association analyses we developed an average pairwise ITH index (APITH), which does not depend on the number of samples per tumor. APITH indexes for SCNAs and methylation aberrations were both significantly associated with poor prognosis. This study further establishes the important clinical implications of genetic and epigenetic ITH in LUAD.

## Introduction

Lung cancer is the leading cause of cancer mortality, causing more than one million deaths worldwide annually <sup>1</sup>. Lung adenocarcinoma (LUAD) is the most common histologic subtype and accounts for about 40% of lung cancer incidence. While hundreds of LUAD tumors have been profiled extensively based on a single biopsy per patient <sup>2,3</sup>, fewer subjects have been investigated for diversity within the tumor through multi-sampling. A few studies have analyzed the extent of intratumor heterogeneity (ITH) of somatic nucleotide variants (SNVs) and/or somatic copy number aberrations (SCNAs) <sup>4-6</sup>, and others of DNA methylation <sup>7,8</sup> in LUAD. Some of these studies found a positive association between SNV ITH and risk of relapse <sup>4</sup> or SCNA ITH and cancer free survival (combining risk of mortality and of recurrences) <sup>6</sup>. However, ITH in these studies was estimated without adjusting for the number of samples examined for each tumor and the methylation analysis did not take into account sample purity.

Using multiple samples per tumor it is possible to reconstruct the cancer evolutionary history. In prostate and brain tumors, congruent evolutionary trajectories of genetic and epigenetic mechanism have been reported <sup>9,10</sup>, but to what extent epigenetic changes occur alongside phylogenetic changes in LUAD remains largely unknown.

Here, we performed a comprehensive analysis of ITH of somatic mutations in cancer driver genes, copy number aberrations and DNA methylation in 292 tumor samples from 84 LUAD patients. We also investigated genetic/epigenetic ITH affecting cancer driver pathways. Moreover, we ordered genetic and epigenetic events along the LUAD evolutionary trajectories, and tested the hypothesis that co-occurrence of genetic and epigenetic mechanisms characterizes the evolution of lung adenocarcinomas. Finally, we assessed the clonality of targetable cancer driver genes and evaluated the association of ITH with clinical outcomes (survival and, separately, risk of metastasis) correcting for sample purity and using a novel unbiased statistical model which takes into account the number of samples examined from each tumor.

## Results

## Patient Characteristics

To determine clonal evolutionary patterns in the genome and epigenome, we performed multi-region sampling from 84 LUAD patients, of whom 76 (90%) reported past or current smoking. All the samples were treatment-naïve and surgically excised. The demographic characteristics are summarized in Table 1 and Supplementary Table 1. The clinical outcome analyses were based on a median follow up time of 40.0 months. In total, 292 tumor tissue samples and 157 non-tumor samples (including 74 normal tissue samples, 81 blood samples and 2 buccal cell sample) were collected from 84 subjects. ITH was estimated for tumors that included between 2 and 11 tumor samples for each assay type. For reference, we used blood or buccal cells for deep target sequencing and, to factor out high tissue specificity, normal tissue samples for methylation. For SNP arrays we used only tumor samples. Samples used for each assay type are shown in Fig. 1 and Supplementary Fig. 1.

## Clonal architecture of somatic mutations and somatic copy number aberrations

Across all patients, deep target sequencing revealed SNVs in 35 out of the 37 cancer driver genes assayed (Supplementary Table 2). On average, 3.4 genes had nonsynonymous SNVs in each patient. The five most frequently mutated genes were *TP53* (50%), *KRAS* (46.4%), *KMT2C* (39.3%), *STK11* (28.6%) and *KEAP1* (25%), consistent with previous studies for LUAD<sup>2,11,12</sup> (Fig. 2, Supplementary Table 2). For each patient, SNVs were classified as public if all tumor samples from the same tumor carried the SNVs and private otherwise. 65.3% (126 of 193) of SNVs were public, a higher proportion than what was observed in the TRACERx study<sup>6</sup> (public SNVs = 50.5%), if we apply the same definition of public vs. private events. In total, 24.3% (47/193; 30 public, 17 private) of SNVs were predicted to strongly alter protein functions (e.g., frameshift or gain of stop codon mutations). The public SNVs showed slightly higher dN/dS ratio than the private SNVs (public SNVs: 3.40 (95% CI: 1.80-6.44), private SNVs: 2.55 (95% CI: 1.29-5.05)). Overall, the functional impact and selective pressure showed no significant difference between public and private SNVs.

Next, we performed unsupervised clustering based on the global SCNA profiles (see Methods).

Intratumoral heterogeneity was lower than intertumoral heterogeneity, with 226/268 (84.3%) samples from the same tumors clustered together and another 7/268 (2.6%) samples from the same tumors in close proximity to each other (Supplementary Fig. 2).

In order to quantify levels of intratumoral heterogeneity, we developed a novel metric, the average pairwise ITH index (*APITH*, see Methods) and applied it to the SCNA profiles of all patients (Fig. 3A). A major advantage of *APITH* is that its value is not biased by the number of multi-region samples per tumor while a previously used method <sup>6</sup> is strongly affected (Fig. 3B). *APITH* ranged from 0 to 0.68 with a mean=0.184, median=0.157 and standard deviation=0.153 (Fig. 3C), suggesting ~18.4% of the genome had different copy number status on average for any pair of tumor samples from the same patient. Of note, the largest *APITH* values (>0.5) were from patients with only two tumor samples, likely because of large variance in the *APITH* estimate.

Previous TCGA studies <sup>2,13</sup> have reported recurrent SCNA regions for LUAD and identified in these regions 32 candidate driver genes, including 25 amplified and 7 deleted genes. In our samples, SCNA ITH in the recurrently altered regions was similar to SCNA ITH across the whole genome (Supplementary Fig. 3). SCNAs of candidate driver genes were observed in 11.3-72.5% tumors, comparable to the TCGA study (Supplementary Table 3). *SMARCA4* deletion and *MCL1* amplification were the most frequent SCNA events (72.5% and 68.75% respectively). *KRAS* and *EGFR* amplification were also observed in 38.75% and 41.25% of tumors, respectively, of which 41.9% and 33.3% were public.

We do not report *APITH* of SNVs since we conducted target sequencing of 37 cancer driver genes only, with resulting low number of mutations identified.

### **Intratumoral heterogeneity of DNA methylation**

We first performed unsupervised hierarchical clustering based on methylation profiles using the 5000 most variable CpG sites across the genome (Fig. 4A) and, separately, limited our analysis to CpGs in promoter regions (Supplementary Fig. 4). Both analyses confirmed that normal tissue samples from almost all subjects (59/61) clustered together. Similarly, 183/205 (89.3%) samples from the same tumors clustered together, showing higher intertumoral heterogeneity than intratumoral heterogeneity.

Previous studies have identified high levels of methylation in promoter regions of some genes, also referred to as the CpG island methylator phenotype (CIMP) in multiple cancer types, including lung cancer<sup>2,14,15</sup>. 16/68 (23.5%) patients had significantly altered CpG island methylator phenotype (CIMP-H) and 47/68 (69.1%) had a normal-like pattern (CIMP-L). In five patients, both CIMP-H and CIMP-L patterns were observed in the same tumor.

We next examined the distribution of DNA methylation ITH based on either the probes across the whole genome or those mapping to specific genomic regions (Fig. 4B). The CpG probes mapping to CpG island regions had a significantly lower *APITH* compared to those mapping to other regions ( $P = 1.09 \times 10^{-10}$ ), as previously observed in aggressive prostate cancer<sup>10</sup>. Moreover, the CpG probes mapping to gene promoter regions (TSS1500, TSS200, 5' UTR and 1<sup>st</sup> exon) had lower *APITH* compared to those mapping to gene bodies, 3' UTR regions and intergenic regions ( $P = 1.626 \times 10^{-8}$ ).

Restricting the analysis to CpG probes mapping to 250 oncogenes and 300 tumor suppressor genes predicted by TUSON Explorer<sup>16</sup> revealed that methylation ITH mapping to tumor suppressor genes was significantly lower than that of oncogenes ( $p = 1.68 \times 10^{-17}$ ) and that of other genes ( $1.50 \times 10^{-16}$ ) (Fig. 4C). Inactivation of tumor-suppressor genes by hypermethylation at promoter regions has been observed in multiple cancer types including lung cancer<sup>17-19</sup>. Lower DNA methylation ITH in these regions suggests greater selective pressure which is consistent with their high putative impacts in oncogenic transformation.

### **Intratumoral heterogeneity of genomic alteration types in cancer driver pathways**

We analyzed genetic and epigenetic aberrations of 13 cancer driver genes in the RTK/RAS/RAF pathway that are frequently mutated in LUAD<sup>2</sup> (Fig. 5). For SCNAs, we only included amplification of oncogenes and deletion of tumor suppressor genes. For DNA methylation, we determined abnormality based on probes located in CpG islands at promoter regions of the target genes.

Across the 13 genes, 77/84 (91.7%) tumors harbored genetic or epigenetic alterations in this pathway; ITH was observed in 69 (89.6%) tumors. SNVs, SCNAs and methylation of the driver genes altered 7.28%, 17.5%, and 4.19% of the tumors, respectively. Different types of genetic or epigenetic alterations affected different samples in the same tumor. For example, in tumor IGC 11-1130, four samples were tested and all had alterations in the *KRAS* pathway. Among them, two samples had amplification in *ROS1* and the other two samples had aberrant DNA methylation in the promoter regions of *ALK* (Fig.5).

In the cell cycle pathway, genetic or epigenetic changes in *RBI*, *CDKN2A* or SWI/SNF components were observed in 57/84 (67.9%) tumors, with ITH in 33 (57.9%) tumors.

### **Evolutionary trajectories inferred from genetic and epigenetic aberrations**

To reconstruct the evolutionary trajectories, we inferred clonal relationships for tumors that were assayed for both SCNA and DNA methylation in multiple regions. For each pair of tumor samples per tumor, we first calculated the Euclidean distance separately for SCNA profiles and the DNA methylation levels of the 5000 most variable CpG probes. We found that the pairwise SCNA distances were positively correlated with DNA methylation distances (Fig. 6A, Spearman's correlation coefficient's = 0.586,  $p < 1 \times 10^{-16}$ ). To exclude the possibility that the DNA methylation changed purely as a consequence of the changed ratio between alleles, we carried out a sensitivity analysis by testing the correlation between SCNA and methylation distances only in regions with homogeneous copy number status and observed consistent results (Supplementary Fig. 5, Spearman's correlation coefficient's = 0.638,  $p < 1 \times 10^{-16}$ ).

Consequently, the topology of evolutionary trees inferred from SCNAs and DNA methylation exhibited similarity (Fig. 6B for 6 tumors with at least 5 samples each, and Supplementary Fig. 6 for 8 tumors with

at least 4 samples each). These results support the co-occurrence of the two mechanisms in shaping the cancer genome.

Of note, when we overlaid the SNVs in target genes on the SCNA- and methylation-derived trees, we observed that some genes were altered by different mechanisms in the same trees. For example, tumor IGC-10-1179 had *STK11* mutated in the trunk and deleted in a branch (Fig. 6C).

### **Associations between intratumoral heterogeneity and clinical outcomes**

We tested the association of SCNA and DNA methylation *APITH* with clinical data and observed no significant correlations with age, sex, tumor stage or grade (Supplementary Table 4). Smokers had higher *APITH* of SCNAs ( $P=0.035$ , nominally significant) but similar *APITH* of methylation compared with non-smokers. Other smoking behaviors (e.g., smoking intensity and duration) were not associated with *APITH* of SCNA or DNA methylation.

Next, we examined the associations between *APITH* and survival or risk of distant metastasis. For each analysis, we performed a Cox proportional-hazards model weighted or unweighted by the variance of the estimated *APITH*. For significant associations, we found that weighted analysis had smaller p-values than unweighted analysis, as expected. Thus, we report below results based on weighted analyses (summary of weighted and unweighted results is in Supplementary Tables 5 and 6).

Similar to the TRACERx study<sup>6</sup>, we found that increased SCNA *APITH* was associated with poor overall survival with  $p=0.05$  using all patients and  $p=0.0044$  ( $HR=1.77$ , 95%  $CI=1.2-2.6$ ) when restricting the analysis to patients with  $\geq 3$  tumor samples per tumor (Supplementary Table 5 and Fig. 7a). SCNA *APITH* was not significantly associated with risk of developing distant metastases (Supplementary Table 5). Of note, for both overall survival and distant metastasis, *APITH* based on SCNAs in the 37 cancer driver genes provided lower prognostic value than the *APITH* of SCNAs in the whole genome.

We then tested the association of DNA methylation-based *APITH* with overall survival and the risk of distant metastases. We found that *APITH* based on the 5000 most variable CpG probes was associated



with overall survival (HR= 1.27, 95% CI=1.05-1.55, p=0.016, Supplementary Table 6 and Fig. 7B) but not significantly associated with risk of metastasis (p=0.14). *APITH* based on CpG probes mapping to island regions had the strongest association with overall survival (HR=1.31, 95% CI=1.10-1.57, p=0.0028, Fig. 7C) and were also found to be associated with risk of distant metastasis (HR=1.35, 95%CI=1.07-1.72, p=0.012, Fig. 7D). The results for *APITH* defined based on other genomic regions are in Supplementary Table 6. The CIMP phenotype did not show substantial ITH, i.e., there were only a few tumors with CIMP-H and CIMP-L across samples from the same tumor. Therefore, we could not analyze the association of *APITH* of CIMP with clinical outcomes.

## Discussion

In this study, we investigated genetic and epigenetic intra-tumor heterogeneity based on multi-region sampling per tumor across 84 lung adenocarcinoma patients. On average, 35% of SNVs in targeted genes were private and ~18.4% of the genome had SCNA ITH for any pair of samples from the same tumor. Methylation in CpG islands or gene promoter regions, particularly of tumor suppressor genes, had low ITH. Different types of somatic alterations across samples from the same tumors affected cancer driver genes in the RTK/RAS/RAF or cell cycle pathways. SCNAs and DNA methylation changes showed congruent evolutionary trajectories. Notably, we developed a statistical approach to correctly estimate ITH for any pair of tumor samples from the same patient and showed that ITH of SCNAs and DNA methylation was associated with poor prognosis.

The findings of substantial ITH across different genomic types and of similar tumor evolutionary trajectories for genetic and epigenetic changes are important to understand the biology and natural history of LUAD. Moreover, they are crucial to inform clinical management and therapeutic strategies. Using multi-region sampling, we identified private events in cancer driver genes, which may not be detected by a single biopsy or by limiting the analyses to point mutations. For example, combining genetic and epigenetic changes, 95.2% of tumors had activating events in the RTK pathway, of which ~36% were private.

ITH of SCNA and ITH of DNA methylation (overall and in CpG islands) were similarly associated with shorter survival in our study, and ITH of methylation in CpG islands was also associated with higher risk of developing metastasis. Adding both measures in the same model did not significantly improve the prediction value (data not shown), likely because the two measures were highly correlated to each other.

In previous studies, ITH of SCNAs was quantified as the fraction of SCNAs not shared by all samples in the tumor<sup>6</sup>. Clearly, this ITH index positively depends on the number of tumor samples per tumor (Fig. 3B) and thus hinders valid cross-patient comparisons or testing associations with clinical outcomes. Moreover, unobserved factors that are associated with the number of tumor samples per patient, e.g., tumor size or different study sites, may confound the association analysis with clinical outcomes. We propose *APITH* as an index for ITH, similar in spirit to that previously proposed for quantifying ITH from the observation of SNVs<sup>20</sup>. This index, defined by pairwise distances of genomic profiles, is not biased by the number of samples per tumor and thus allows association testing for any genomic profiling platforms. Crucially, the variance of *APITH* estimates depend on the number of samples per tumor and thus a naïve statistical association test between *APITH* and any outcome may have low statistical power. We explicitly addressed this issue by quantifying the variance of *APITH* and proposing a procedure for its numerical calculation. This variance was used to weight subjects in the regression analyses to achieve the best statistical power, as demonstrated in theoretical analyses (Supplementary Methods). As a confirmation, our empirical results showed that the weighted analyses produced more significant results than the unweighted analyses for the association between *APITH* and overall survival.

A comparison between the previous TRACERx study<sup>6</sup> and this study using *APITH* to estimate the ITH of SCNAs is reported in the Supplementary Notes.

In conclusion, our results delineate the genetic and epigenetic ITH in LUAD and provide a rigorous statistical approach to estimate ITH for comparisons across individuals and for associations with clinical outcomes. DNA methylation and genomic changes followed similar evolutionary trajectories and strongly

impacted cancer driver genes and pathways in a complex manner. These findings can inform the clinical management of lung adenocarcinomas suggesting that taking multiple biopsies and analyzing multiple genomic types may be needed to capture the landscape of targetable events. Future larger studies are warranted to identify the combination of genomic types and genomic regions to best predict clinical outcomes.

## **Methods**

### **Patients and multi-region tumor samples**

The current work includes 84 LUAD patients from the EAGLE study, a population-based case-control study conducted in Italy between 2002 and 2005<sup>12,21,22</sup>. Samples were snap-frozen in liquid nitrogen within 20 min of surgical resection and the precise site of tissue sampling was recorded. All tumor samples were histologically confirmed as primary lung adenocarcinoma (not mixed types or undifferentiated cases) with at least 50% tumor nuclei and less than 20% necrosis. Normal tissue samples were taken at >3 cm from the tumor tissue and had to have no tumor nuclei at histological examination. Based on these characteristics and DNA quality, we were able to analyze between 2 and 11 samples from each tumor, for an overall 292 tumor samples and 157 non-tumor samples (including 74 normal tissue samples, 81 blood samples and 2 buccal cell samples). Detailed information on tumor characteristics, recurrence, treatment, and follow-up data were recovered from patients' medical records and follow-up visits and hospital admissions were identified by linkage with the region-wide Regional Health Authority database (Supplementary Table 1). Recurrence history was ascertained through December 31, 2010. The study protocol was approved by the Institutional Review Board of the US National Cancer Institute and the involved institutions in Italy. Informed consent was obtained for all subjects prior to study participation.

### **Genomic and epigenomic profiling of tumor samples**

Somatic copy number alterations (SCNAs) in tumors were profiled using 705,667 probes from the Illumina HumanOmniExpress SNP arrays in 268 tumor samples from 80 subjects. SCNA segmentation was performed using ASCAT<sup>23</sup> based only on B allele frequencies to avoid hypersegmentation; copy number status of each segment was determined based on log R ratio. Bisulphite treatment and Illumina Infinium HumanMethylation450 BeadChip assays were performed to derive the DNA methylation levels in 205 tumor samples and 74 normal tissue samples from 68 subjects; in the absence of paired normal tissue samples for 7 tumors, methylation levels were imputed based on the methylation levels of the overall normal samples. For DNA methylation, we analyzed 338,730 CpG probes after excluding probes annotated with genetic variants, in repetitive genomic regions or on the X-chromosome. Deep target sequencing was performed to identify SNVs for 37 established lung cancer driver genes<sup>2,11,12</sup> with an average sequencing depth of 500X in 180 tumor samples and 55 blood samples and 1 buccal sample from 56 subjects. Sequence data were processed using the standard Ion Torrent Suite Software (Thermo Fisher Scientific) version 5.0.7 and somatic mutations were detected using TVC (Torrent variant caller) version 5.0.9. More details can be found in Supplementary Methods. Samples used for each assay are listed in Fig. 1 and Supplementary Fig. 1.

## **Bioinformatic analyses**

*DNA methylation:* Bisulphite treatment and Illumina Infinium HumanMethylation450 BeadChip assays were performed to derive the DNA methylation levels. Raw methylated and unmethylated intensities were background-corrected, and dye-bias-equalized, to correct for technical variation in signal between arrays. For background correction, we applied a normal-exponential convolution, using the intensity of the Infinium I probes in the channel opposite their design to measure non-specific signal. For each CpG probe, the DNA methylation level was summarized as the fraction of signal intensity obtained from the methylated beads over the total signal intensity. After excluding CpG probes annotated with genetic variants, in repetitive genomic regions or on the X-chromosome, 338,730 CpG probes remained for analysis. Each CpG probe was annotated as in CpG Island (denoted as CGI), nonCGI (including shores

and shelves) or “open-sea”. Each CpG probe was also annotated as in promoter (TSS200, TSS1500 and first exon), body, 3’UTR in a specific gene or annotated as intergenic. Methylation ITH of specific genomic regions was computed using the average pair-wise distance of the top 10% variably expressed probes mapping to that region scaled by the number of probes. To identify potential driver DNA methylation events, we analyzed CpG island regions of cancer driver genes and compared the beta values of tumor samples and corresponding normal samples. We used 0.3 as the cutoff value to call differences in beta values<sup>7</sup>.

*Deep target sequencing:* Deep target sequencing was performed to identify SNVs for 37 established lung cancer driver genes with an average sequencing depth of 500X. The genes were targeted with an Ion Ampliseq panel, and enriched libraries were sequenced using P1 chips on the Ion Proton sequencer. All laboratory analyses were performed at the Cancer Genomics Research Laboratory (CGR) of the Division of Cancer Epidemiology and Genetics, NCI. Sequence data were processed using standard Ion Torrent Suite Software (Thermo Fisher Scientific) version 5.0.7. The data processing pipeline includes signal processing, base calling, quality score assignment, adapter trimming, read alignment to hg19, coverage analysis and somatic variant calling. We used TVC (Torrent variant caller) version 5.0.9 to detect somatic mutations. A somatic mutation was detected if the variant allele count >3, coverage >2 in both tumor and normal samples and variant allele fraction  $\geq 0.1$ . The dN/dS ratio was estimated using R package “dNdScv”<sup>24</sup>.

*SCNA:* We initially performed SCNA analysis using ASCAT<sup>23</sup> with default parameters, which uses both LRR (log R ratio) and BAF (B-allele frequency). Extensive SCNAs and very complex subclonality patterns made segmentation difficult. Thus, we modified the ASCAT to rely only on BAFs for segmentation. Segments with BAF values different from 0.5 were identified as SCNA regions. We compared LRR values between SCNA regions and segments with BAFs=0.5 using the Student’s t-test. If the SCNA region LRRs were significantly higher or lower at significance level of 0.05 after adjusting for multiple comparisons, the segments were identified as amplified or deleted, respectively. Otherwise they

were identified as LOH. In addition, amplifications with at least four copy numbers in oncogenes and deletions with zero copy number in tumor suppressor genes were identified as potential driver events.

### Statistical analyses

Regional genetic and epigenetic evolutionary trees for each patient were built using “fastme.bal” in an R package “ape” that uses the minimum evolution algorithm based on a distance matrix of SCNA or methylation profiles<sup>25</sup>. The consensus tree was built using a revised distance matrix combining both SCNA and DNA methylation profiles with methods described briefly below. Let  $d_{ij}^1$  denotes SCNA

distance and  $d_{ij}^2$  denotes methylation distance. When both samples have SCNA and methylation profiles,

the new distance was defined as  $d_{ij}^0 = 0.5\left(\frac{d_{ij}^1}{\max d_{kl}^1} + \frac{d_{ij}^2}{\max d_{kl}^2}\right)$ . When only SCNA profiles are available, we

define  $d_{ij}^0 = \frac{d_{ij}^1}{\max d_{kl}^1}$ . Here, the denominators are used to rescale distances so that they are comparable

between SCNA and DNA methylation profiles.

The analysis of the CpG island methylator phenotype (CIMP) was performed using the hierarchical clustering based on the 5000 most variable CpG probes mapping to gene promoter regions and CpG island regions.

### Methylation analysis adjusted by sample purity

For a given CpG probe, the observed DNA methylation was a linear combination of the data from the normal and the tumor tissue samples weighted by tumor purity. ITH may be overestimated if purity varies across tumor samples from the same patient. Thus, we estimated purity,  $\pi$ , for each tumor sample and derived the purity adjusted methylation values using R package InfiniumPurify<sup>26</sup>. All downstream methylation analyses were based on purity-adjusted methylation.

### Quantification of ITH

The frequently used index<sup>6</sup> that measures ITH for a patient using the fraction of aberrations present in all samples positively depends on the number of multi-region tumor samples. This estimate may vary across

tumors making the association analysis between ITH and clinical outcomes problematic. To address this problem, we defined a novel ITH metric, average pairwise ITH or *APITH*, for each patient. For a patient with  $k$  tumor samples, and with  $d_{ij}$  defined as the genomic or epigenetic distance between a pair of samples  $(i, j)$ , the *APITH* is defined as the average across all pairs of samples:

$$APITH = \frac{2}{k(k-1)} \sum_{1 \leq i < j \leq k} d_{ij}.$$

The expectation of *APITH* does not depend on the number of multi-region tumor samples. For SCNAs,  $d_{ij}$  is calculated as the proportion of the 705,667 probes with different copy number status for  $(i, j)$ . To investigate ITH of lung cancer driver genes<sup>2,11,12</sup>, we also calculated  $d_{ij}$  as the fraction of the genome in these driver gene regions with differing copy number state. For DNA methylation, we define  $d_{ij}$  as the Euclidean distance calculated for a given set of CpG probes, e.g., all CpG probes after quality control (QC), CpG probes mapping to CpG island and gene promoter regions. These analyses are informative to investigate whether ITH defined based on specific genomic regions would be useful for predicting prognosis.

The variance of the *APITH* estimate depends on the number of multi-region tumor samples. Intuitively, *APITH* is more accurate for patients with more multi-region tumor samples and should be weighted up in downstream statistical analyses to optimize statistical power. As described in Supplementary Methods, we heuristically derived sample weights that were used for the weighted Cox proportional-hazards model using “svycoxph” in the R package “survey”<sup>27</sup> to investigate the association between *APITH* and clinical outcomes (overall survival and the risk of distant metastasis). The survival analysis was adjusted for stage, age and smoking status. KM-plots were stratified by the median *APITH* of subjects with at least two tumor samples.

## Data availability

The target sequencing data have been deposited in SRA through dbGaP under the accession number PHS001239.V1.P1. The SNP array and methylation array data have been deposited in dbGaP under the same accession number.

## **Code availability**

The corresponding R code is available upon request from the authors.

## **Acknowledgements**

This work was supported by the Intramural Program of the Division of Cancer Epidemiology and Genetics, National Cancer Institute, NIH and utilized the computational resources of the NIH high-performance computational capabilities Biowulf cluster (<http://hpc.nih.gov>). We are grateful to the patients and families who contributed to this study and the many investigators who are involved in the EAGLE study. We also thank the National Cancer Institute Cancer Genomics Research Laboratory (CGR) for sample preparation and quality control laboratory analyses. DCW is funded by the Li Ka Shing Foundation and the National Institute for Health Research, Oxford Biomedical Research Centre.

## **Author contributions**

M.T.L. conceived the study. A.C.P., D.C., N.E.C. oversaw the surgical sampling design, sample and data collection, and field activities. X.H. and J.S. performed the statistical analysis of phylogenetic trees, developed the statistic for intra-tumor heterogeneity analyses, and conducted association analyses. W.Z., X.H, and T.Z. conducted the bioinformatics analyses. J.S. and B.Z. helped with the statistical analyses. L.S. helped with the bioinformatic analyses. M.W., K.J., and B.H. conducted the laboratory analyses. W.Z., D.C.W., J.S. and M.T.L. discussed the results and implications and wrote the manuscript. All authors reviewed the manuscript.

**Competing interests:** The authors declare no competing interests.



## Figure Legends

Fig. 1. Summary of subjects and tumor samples that were analyzed on different platforms: ultra-deep targeted sequencing of cancer driver genes (180 tumor samples from 56 subjects), genome-wide methylation (205 tumor samples from 68 subjects) or SNP array profiling (268 samples from 80 subjects). Top panel (bar plot): the total number of tumor samples from each subject. Bottom panel (heatmap): the number of tumor samples from each subject profiled by different platforms.

Fig. 2. Intratumor heterogeneity of single nucleotide variants for 35 lung driver genes. Only nonsynonymous mutations are included for analysis. Top panel: the number of public (shared by all tumor samples in a patient) and private (not shared by all tumor samples in a patient) mutations for each driver gene. Bottom panel: summary of intratumor heterogeneity for each gene in each tumor. Thick lines separate the different tumors. Multiple lanes within thick lines indicate multiple samples from the same tumor.

Fig. 3. Intratumor heterogeneity of somatic copy number alterations (SCNAs). (A) Left panel: SCNA landscape of 80 subjects with multi-region sampling. Right panel: fractions of genomes disrupted by a specific type of SCNA. (B) *APITH* score (left) and naïve ITH (right) calculated based on the tumor samples of subject IGC-11-1044 with 7 tumor samples. For a given set of tumor samples, *APITH* was calculated as the average pairwise distance between any pair of tumor samples; naïve ITH index as calculated as the fraction of genome disrupted by private SCNAs that were not shared by all tumor samples. For a given number ( $K=2, \dots, 7$ ) of tumor samples, we enumerated all combinations of  $K$  tumor samples to derive the distribution of ITH index. The naïve ITH index positively depends on the number of tumor samples while *APITH* does not. (C) Distribution of pairwise average ITH of SCNAs for 80 subjects with average *APITH* score 0.184.

Fig. 4. Intratumoral heterogeneity of DNA methylation profiles. (A) Unsupervised hierarchical clustering of 5000 most variable probes in CpG islands of the genome in 68 subjects. Different tumors are indicated by different colors in the column sidebar, with normal samples colored in gray. The numbers in parenthesis are the number of normal tissue samples for the ‘normal’ group, or the number of tumor samples in each patient. The beta values represent estimates of methylation levels, with 0 being unmethylated and 1 fully methylated. (B) Distribution of ITH of DNA methylation in different genomic contexts. TSS 1500: 200–1500 bases upstream of the transcription start sites (TSS), TSS 200: 0–200 bases upstream of the TSS. 5'UTR: Within the 5' untranslated region, between the TSS and the ATG start site. Gene body: Between the ATG and stop codon. 3'UTR: From the stop codon to poly A tail. Island: CpG island. Shore: 0–2 kb from island. Shelf: 2–4 kb from island. North: upstream (5') of island. South: downstream (3') of island. (C) ITH of DNA methylation in oncogenes, tumor suppressor genes and random gene sets.

Fig. 5. Intratumor heterogeneity of genomic and epigenomic alterations of 13 cancer driver genes in RTK/RAS/RAF pathway. Shown are public and private SNVs, SCNAs and DNA methylation alterations in 84 subjects.

Fig. 6. Reconstruction of evolutionary trajectories from SCNA and DNA methylation profiles. (A) Pairwise distance of tumor samples from the same tumor based on DNA methylation and SCNA profiles. Significant correlation coefficient is shown. (B) Phylogenetic analysis of subject IGC11-1044 based on DNA methylation and SCNA profiles, and the consensus phylogenetic tree built based on the distance incorporating both SCNA and DNA methylation profiles. (C) Consensus phylogenetic trees for six tumors with at least five samples assayed for both SCNAs and DNA methylation. SNVs, deletions of tumor suppressor genes and amplifications of oncogenes are marked on the inferred phylogenetic tree.

Fig. 7. Kaplan-Meier estimates of overall survival in patients with high and low ITH of (A) SCNAs, (B) DNA methylation based on the top 5000 most variable CpG probes and (C) DNA methylation at CpG islands. (D) Kaplan-Meier estimates of metastasis in patients with high and low ITH of DNA methylation at CpG islands.

**Table 1.** Distribution of demographic and clinical variables of 84 lung adenocarcinoma patients

Age at first diagnosis (mean, range): 66.3 (49-80)	
Sex	
Male	68
Female	16
Smoking status	
Never	7
Former	34
Current	42
Cigarettes per day (mean±s.d.): 19.1 ± 11.9	
≤ 10	21
> 10, ≤ 20	38
> 20, ≤ 30	13
> 30	9
Cigarette smoking duration (mean±s.d.): 42.8 ± 9.8	
≤ 30 years	7
> 30, ≤ 40	24
> 40, ≤ 50	29
> 50 years	14
Tumor stage	
IA	19
IB	18
IIA	13
IIB	8
IIIA	21
IIIB	3
IV	2
Chemotherapy	
yes	0
no	84
Distant metastasis	44
Deceased	50

## References

1. Bray, F. *et al.* Global cancer statistics 2018: GLOBOCAN estimates of incidence and mortality worldwide for 36 cancers in 185 countries. *CA Cancer J Clin* **68**, 394-424 (2018).
2. Cancer Genome Atlas Research, N. Comprehensive molecular profiling of lung adenocarcinoma. *Nature* **511**, 543-50 (2014).
3. Govindan, R. *et al.* Genomic landscape of non-small cell lung cancer in smokers and never-smokers. *Cell* **150**, 1121-34 (2012).
4. Zhang, J. *et al.* Intratumor heterogeneity in localized lung adenocarcinomas delineated by multiregion sequencing. *Science* **346**, 256-9 (2014).
5. de Bruin, E.C. *et al.* Spatial and temporal diversity in genomic instability processes defines lung cancer evolution. *Science* **346**, 251-6 (2014).
6. Jamal-Hanjani, M. *et al.* Tracking the Evolution of Non-Small-Cell Lung Cancer. *N Engl J Med* **376**, 2109-2121 (2017).
7. Quek, K. *et al.* DNA methylation intratumor heterogeneity in localized lung adenocarcinomas. *Oncotarget* **8**, 21994-22002 (2017).
8. Dietz, S. *et al.* Global DNA methylation reflects spatial heterogeneity and molecular evolution of lung adenocarcinomas. *Int J Cancer* **144**, 1061-1072 (2019).
9. Mazor, T. *et al.* DNA Methylation and Somatic Mutations Converge on the Cell Cycle and Define Similar Evolutionary Histories in Brain Tumors. *Cancer Cell* **28**, 307-317 (2015).
10. Brocks, D. *et al.* Intratumor DNA methylation heterogeneity reflects clonal evolution in aggressive prostate cancer. *Cell Rep* **8**, 798-806 (2014).
11. Imielinski, M. *et al.* Mapping the hallmarks of lung adenocarcinoma with massively parallel sequencing. *Cell* **150**, 1107-20 (2012).
12. Shi, J. *et al.* Somatic Genomics and Clinical Features of Lung Adenocarcinoma: A Retrospective Study. *PLoS Med* **13**, e1002162 (2016).
13. Campbell, J.D. *et al.* Distinct patterns of somatic genome alterations in lung adenocarcinomas and squamous cell carcinomas. *Nat Genet* **48**, 607-16 (2016).
14. Toyota, M. *et al.* CpG island methylator phenotype in colorectal cancer. *Proc Natl Acad Sci U S A* **96**, 8681-6 (1999).
15. Liu, Z. *et al.* CpG island methylator phenotype involving tumor suppressor genes located on chromosome 3p in non-small cell lung cancer. *Lung Cancer* **62**, 15-22 (2008).
16. Davoli, T. *et al.* Cumulative haploinsufficiency and triplosensitivity drive aneuploidy patterns and shape the cancer genome. *Cell* **155**, 948-62 (2013).
17. Zochbauer-Muller, S., Minna, J.D. & Gazdar, A.F. Aberrant DNA methylation in lung cancer: biological and clinical implications. *Oncologist* **7**, 451-7 (2002).
18. Hao, X. *et al.* DNA methylation markers for diagnosis and prognosis of common cancers. *Proc Natl Acad Sci U S A* **114**, 7414-7419 (2017).
19. Saghafinia, S., Mina, M., Riggi, N., Hanahan, D. & Ciriello, G. Pan-Cancer Landscape of Aberrant DNA Methylation across Human Tumors. *Cell Rep* **25**, 1066-1080 e8 (2018).
20. Yates, L.R. *et al.* Subclonal diversification of primary breast cancer revealed by multiregion sequencing. *Nat Med* **21**, 751-9 (2015).
21. Consonni, D. *et al.* Lung cancer prognosis before and after recurrence in a population-based setting. *J Natl Cancer Inst* **107**, djv059 (2015).
22. Landi, M.T. *et al.* Environment And Genetics in Lung cancer Etiology (EAGLE) study: an integrative population-based case-control study of lung cancer. *BMC Public Health* **8**, 203 (2008).

23. Van Loo, P. *et al.* Allele-specific copy number analysis of tumors. *Proc Natl Acad Sci U S A* **107**, 16910-5 (2010).
24. Martincorena, I. *et al.* Universal Patterns of Selection in Cancer and Somatic Tissues. *Cell* **171**, 1029-1041 e21 (2017).
25. Desper, R. & Gascuel, O. Fast and accurate phylogeny reconstruction algorithms based on the minimum-evolution principle. *J Comput Biol* **9**, 687-705 (2002).
26. Zheng, X., Zhang, N., Wu, H.J. & Wu, H. Estimating and accounting for tumor purity in the analysis of DNA methylation data from cancer studies. *Genome Biol* **18**, 17 (2017).
27. Binder, D.A. Fitting Cox Proportional Hazards Models from Survey Data. *Biometrika* **79**, 139-147 (1992).

**Figure 1**

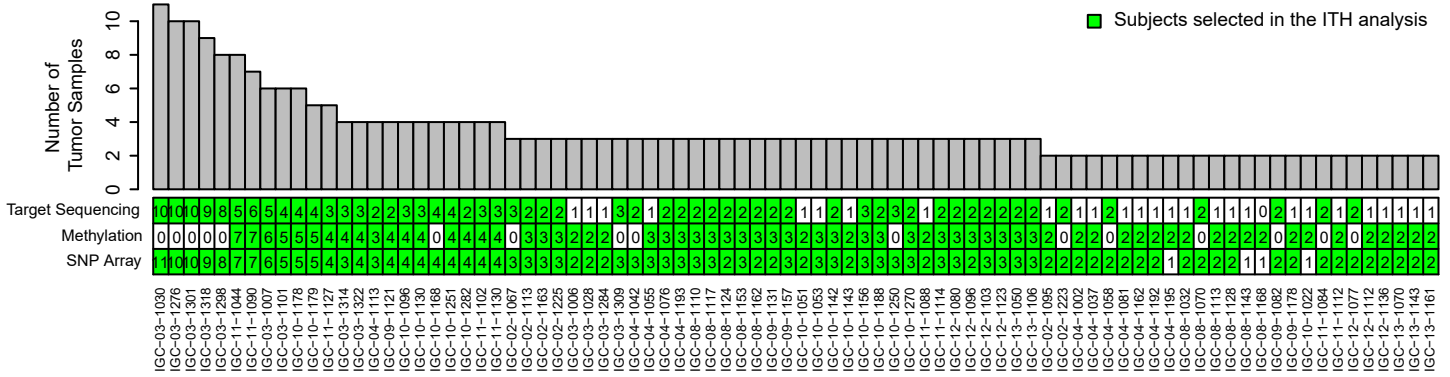
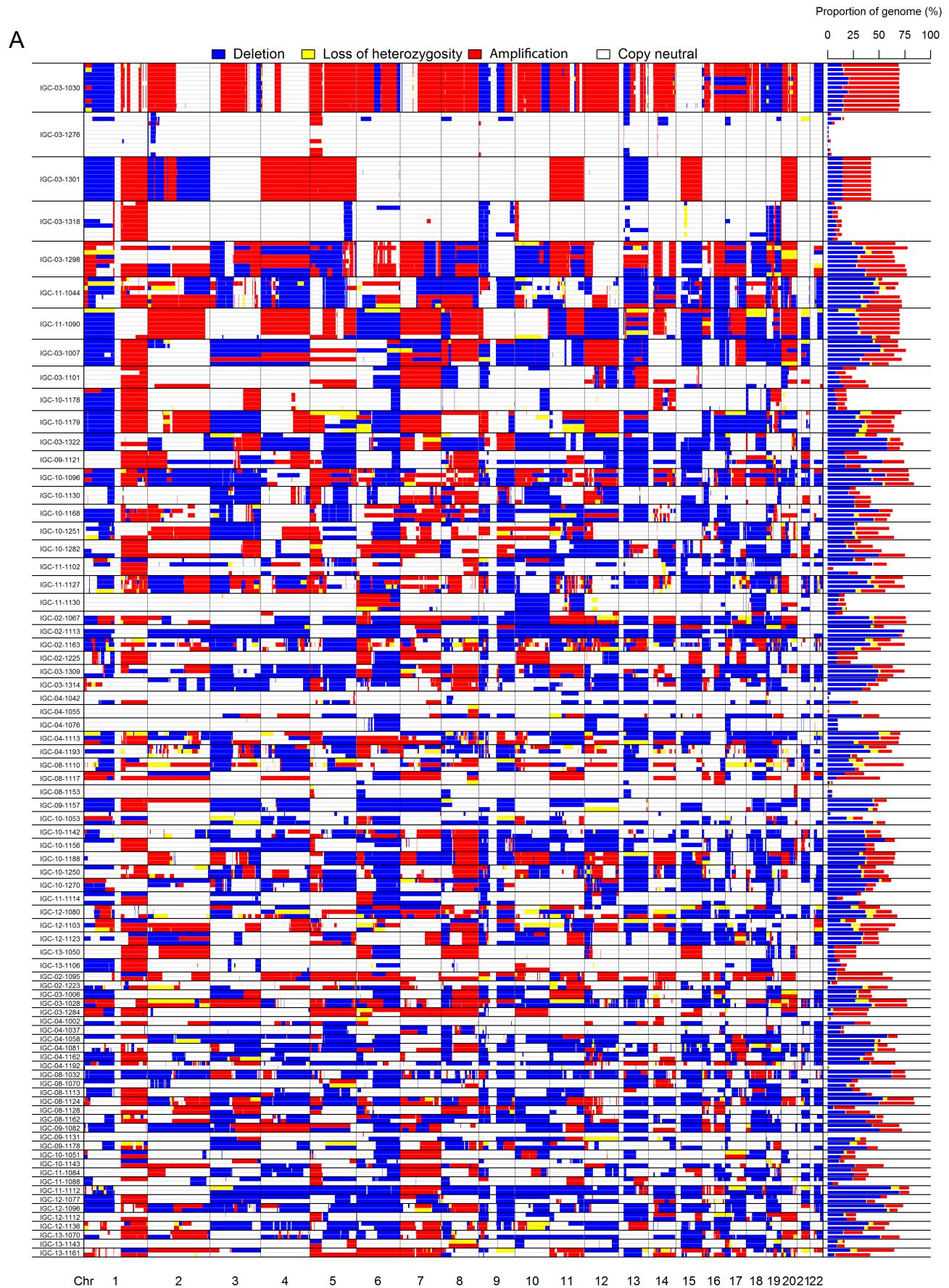


Figure 2



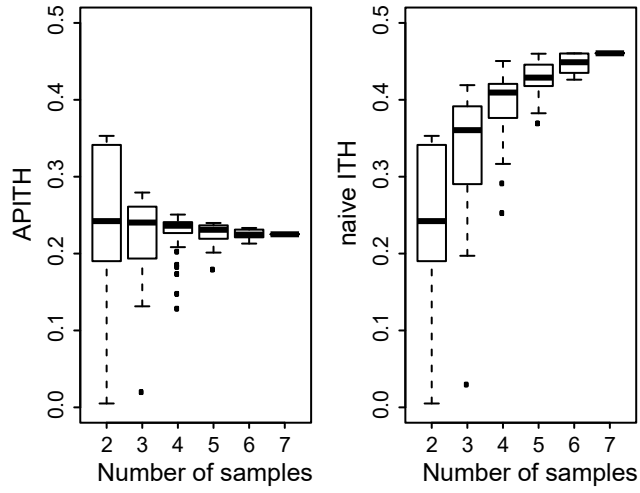


Figure 3

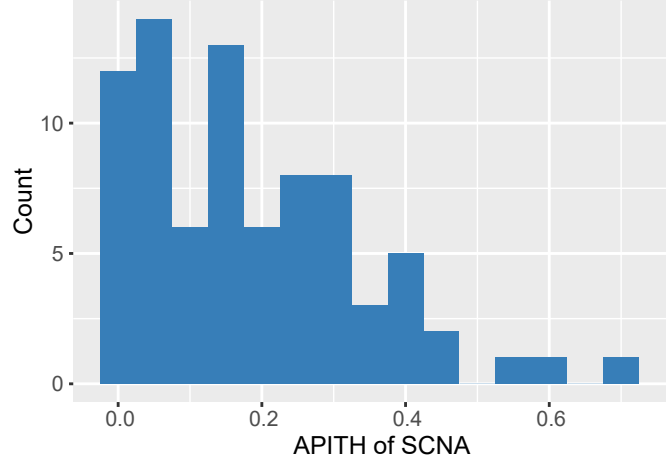


**Figure 3**

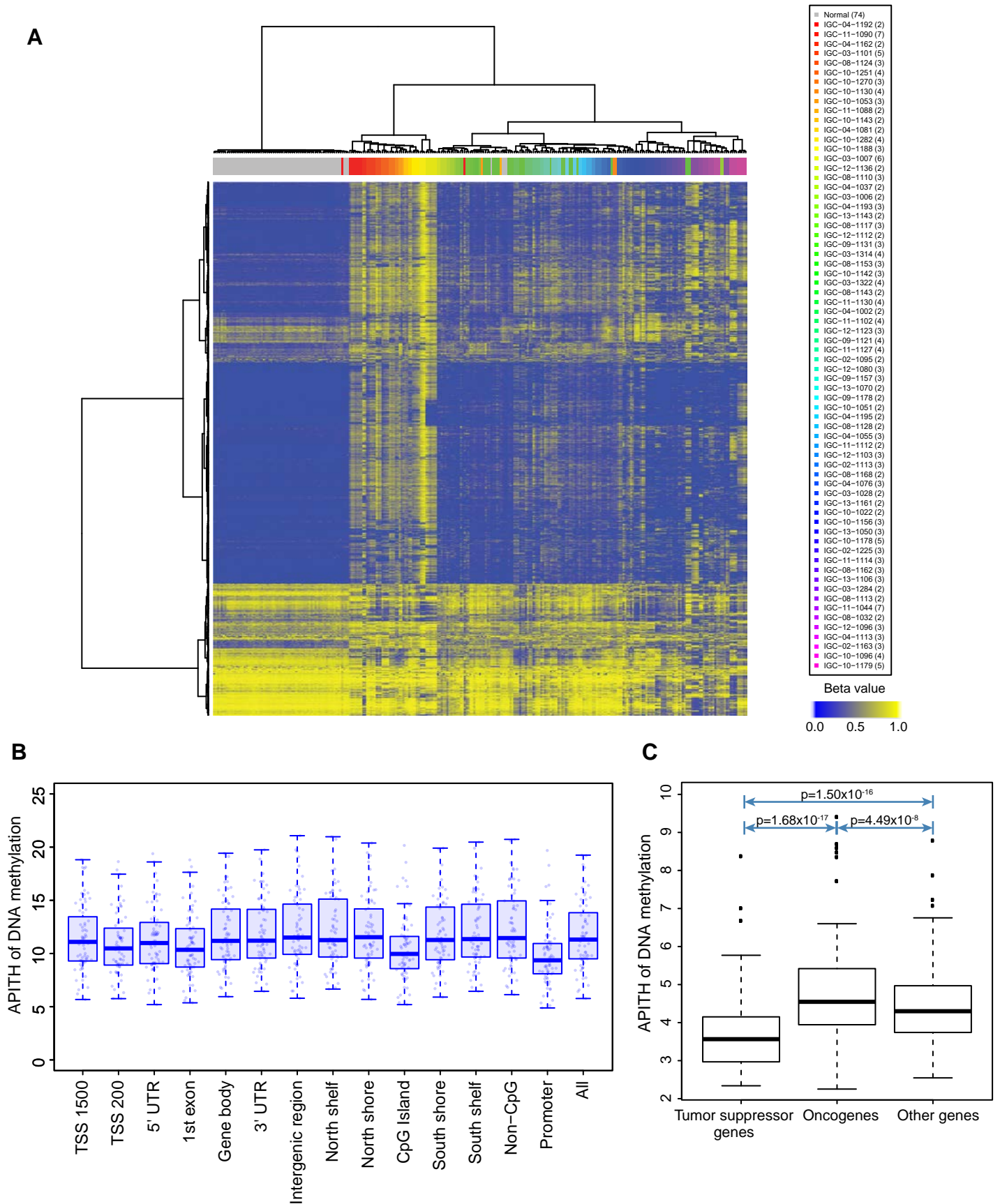
**B**



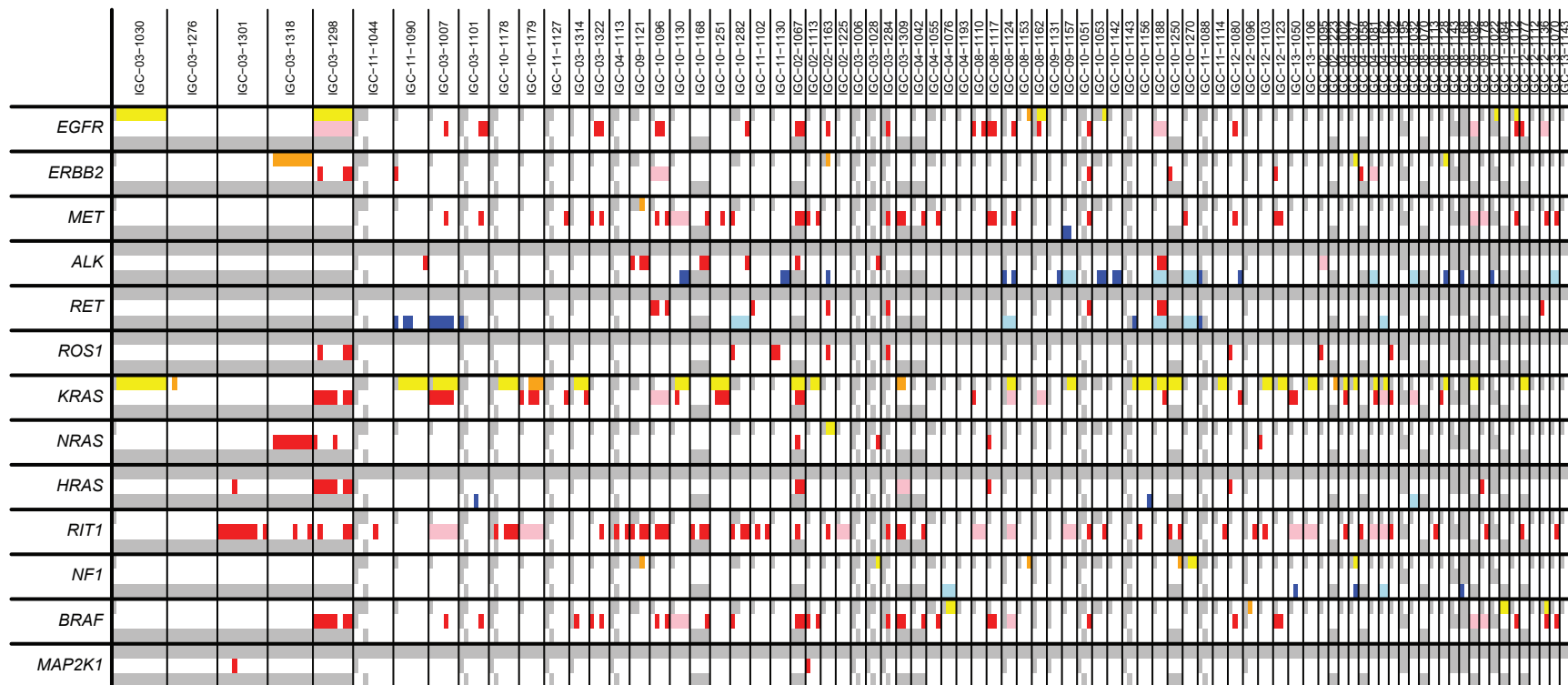
**C**



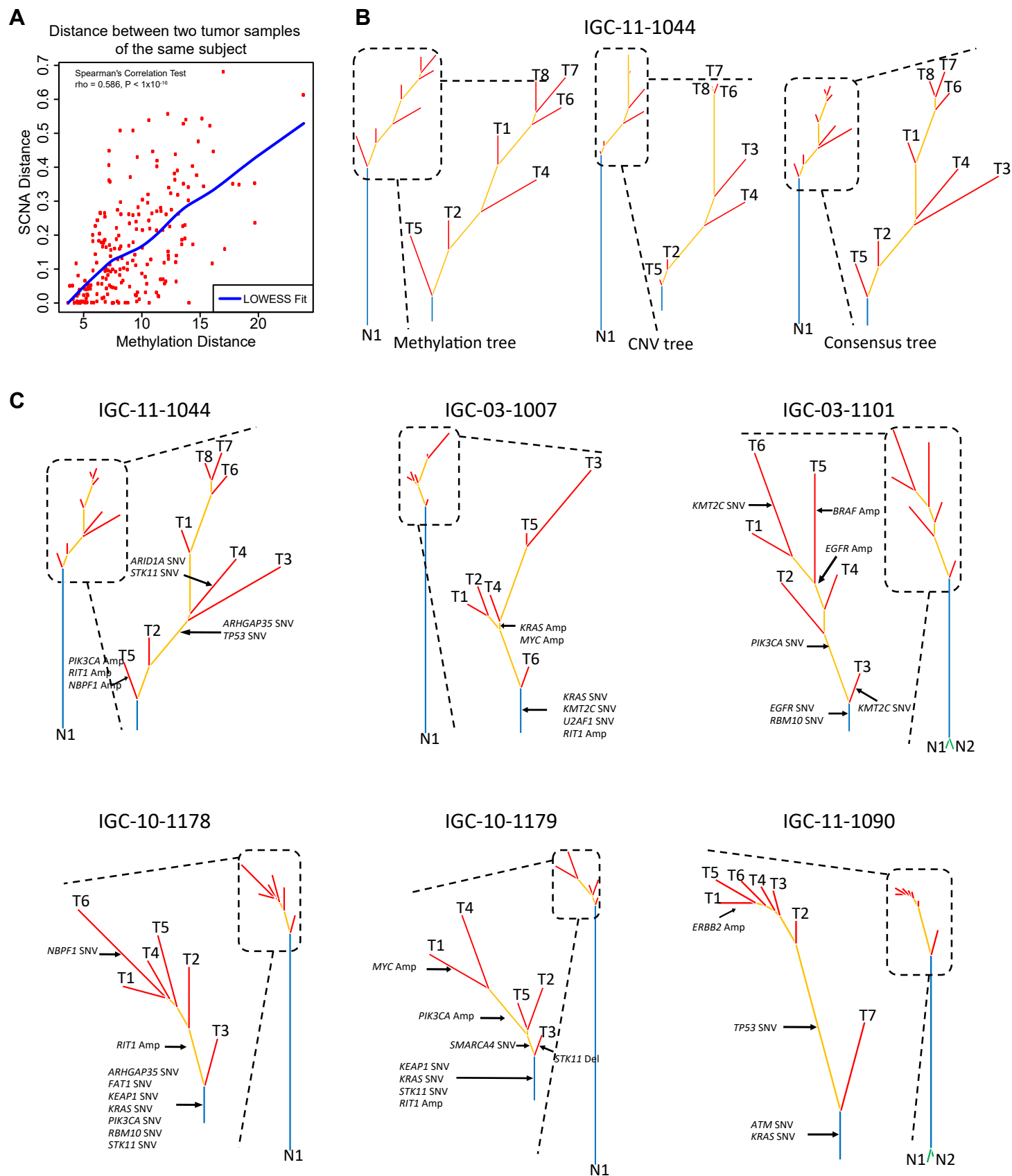
## Figure 4



**Figure 5**



## Figure 6



**Figure 7**

