

Common variants in Alzheimer's disease: Novel association of six genetic variants with AD and risk stratification by polygenic risk scores

Itziar de Rojas^{1,2*}, Sonia Moreno-Grau^{1,2*}, Niccolò Tesi^{3,4*}, Benjamin Grenier-Boley^{5*}, Victor Andrade^{6,7*}, Iris Jansen^{3,8*}, Nancy L. Pedersen⁹, Najada Stringa¹⁰, Anna Zettergren¹¹, Isabel Hernández^{1,2}, Laura Montreal¹, Carmen Antúnez¹², Anna Antonell¹³, Rick M. Tankard¹⁴, Joshua C. Bis¹⁵, Rebecca Sims^{16,17}, Céline Bellenguez⁵, Inés Quintela¹⁸, Antonio González-Perez¹⁹, Miguel Calero^{20,21,2}, Emilio Franco²², Juan Macías²³, Rafael Blesa^{24,2}, Manuel Menéndez-González^{25,26}, Ana Frank-García^{27,28,29,2}, Jose Luís Royo³⁰, Fermín Moreno^{31,2}, Raquel Huerto^{32,33}, Miquel Baquero³⁴, Mónica Diez-Fairen³⁵, Carmen Lage^{36,2}, Sebastian Garcia-Madrona³⁷, Pablo García¹, Emilio Alarcón-Martín^{30,1}, Sergi Valero^{1,2}, Oscar Sotolongo-Grau¹, EADB, GR@ACE, DEGESCO, IGAP (ADGC, CHARGE, EADI, GERAD) and PGC-ALZ Consortia, Guillermo Garcia-Ribas³⁷, Pascual Sánchez-Juan^{36,2}, Pau Pastor³⁵, Jordi Pérez-Tur^{38,34,2}, Gerard Piñol-Ripoll^{32,33}, Adolfo Lopez de Munain^{31,39}, Jose María García-Alberca⁴⁰, María J. Bullido^{41,28,29,2}, Victoria Álvarez^{25,26}, Alberto Lleó^{24,2}, Luis M. Real^{23,42}, Pablo Mir^{43,2}, Miguel Medina^{2,21}, Philip Scheltens¹⁰, Henne Holstege^{10,4}, Marta Marquié¹, María Eugenia Sáez¹⁹, Ángel Carracedo^{18,44}, Philippe Amouyel⁵, Julie Williams^{16,17}, Sudha Seshadri^{45,46,47}, Cornelia M. van Duijn⁴⁸, Karen A. Mather^{49,50}, Raquel Sánchez-Valle¹³, Manuel Serrano-Ríos⁵¹, Adelina Orellana^{1,2}, Lluís Tárraga^{1,2}, Kaj Blennow^{52,53}, Martijn Huisman^{10,54}, Ole A. Andreassen^{55,56}, Danielle Posthuma^{8,57}, Jordi Clarimón^{24,2,+}, Mercè Boada^{1,2,+}, Wiesje M. van der Flier^{3,+}, Alfredo Ramirez^{6,7,58,+}, Jean-Charles Lambert^{5,+}, Sven J. van der Lee^{(**)^{3,4,+}}, Agustín Ruiz^{1,2 (**)+}.

1. *Research Center and Memory clinic Fundació ACE, Institut Català de Neurociències Aplicades, Universitat Internacional de Catalunya, Barcelona, Spain.*
2. *CIBERNED, Network Center for Biomedical Research in Neurodegenerative Diseases, National Institute of Health Carlos III, Madrid, Spain.*
3. *Alzheimer Center Amsterdam, Department of Neurology, Amsterdam Neuroscience, Vrije Universiteit Amsterdam, Amsterdam UMC, Amsterdam, The Netherlands.*
4. *Department of Clinical Genetics, VU University Medical Centre, Amsterdam, The Netherlands*
5. *Univ. Lille, Inserm, Institut Pasteur de Lille, CHU Lille, U1167 - Labex DISTALZ - RID-AGE - Risk factors and molecular determinants of aging-related diseases, F-59000 Lille, France.*
6. *Division of Neurogenetics and Molecular Psychiatry, Department of Psychiatry and Psychotherapy, University of Cologne, Medical Faculty, 50937 Cologne, Germany.*
7. *Department of Neurodegeneration and Geriatric Psychiatry, University of Bonn, 53127 Bonn, Germany.*
8. *Department of Complex Trait Genetics, Center for Neurogenomics and Cognitive Research, Amsterdam Neuroscience, Vrije Universiteit Amsterdam, Amsterdam UMC, Amsterdam, The Netherlands.*
9. *Department of Medical Epidemiology and Biostatistics, Karolinska Institutet, Stockholm, Sweden*
10. *Amsterdam UMC - Vrije Universiteit Amsterdam, Department of Epidemiology and Biostatistics, Amsterdam Public Health Research Institute, Amsterdam, the Netherlands.*
11. *Neuropsychiatric Epidemiology Unit, Department of Psychiatry and Neurochemistry, Institute of Neuroscience and Physiology, Sahlgrenska Academy, Centre for Ageing and Health (AgeCap) at the University of Gothenburg, Sweden.*
12. *Unidad de Demencias, Hospital Clínico Universitario Virgen de la Arrixaca, Murcia, Spain.*
13. *Alzheimer's disease and other cognitive disorders unit. Service of Neurology. Hospital Clínic of Barcelona. Institut d'Investigacions Biomèdiques August Pi i Sunyer, University of Barcelona, Barcelona, Spain.*
14. *Mathematics and Statistics, Murdoch University, WA, Australia.*
15. *Cardiovascular Health Research Unit, Department of Medicine, University of Washington, Seattle, WA, USA.*
16. *Division of Psychological Medicine and Clinical Neurosciences, MRC Centre for Neuropsychiatric Genetics and Genomics, Cardiff University, UK.*
17. *UK Dementia Research Institute at Cardiff, Cardiff University, Cardiff, UK.*
18. *Grupo de Medicina Xenómica, Centro Nacional de Genotipado (CEGEN-PRB3-ISCIII). Universidad de Santiago de Compostela, Santiago de Compostela, Spain.*
19. *CAEBI, Centro Andaluz de Estudios Bioinformáticos, Sevilla, Spain.*
20. *UFIEC, Instituto de Salud Carlos III.*
21. *CIEN Foundation/Queen Sofia Foundation Alzheimer Center.*
22. *Unidad de Demencias, Servicio de Neurología y Neurofisiología. Instituto de Biomedicina de Sevilla (IBiS), Hospital Universitario Virgen del Rocío/CSIC/Universidad de Sevilla, Seville, Spain.*
23. *Unidad Clínica de Enfermedades Infecciosas y Microbiología. Hospital Universitario de Valme, Sevilla, Spain.*
24. *Department of Neurology, II B Sant Pau, Hospital de la Santa Creu i Sant Pau, Universitat Autònoma de Barcelona, Barcelona, Spain.*
25. *Hospital Universitario Central de Asturias, Oviedo, Spain.*
26. *Instituto de Investigación Sanitaria del Principado de Asturias.*

NOTE: This preprint reports new research that has not been certified by peer review and should not be used to guide clinical practice.

27. *Hospital Universitario la Paz.*
28. *Instituto de Investigación Sanitaria 'Hospital la Paz' (IdIPaz), Madrid, Spain.*
29. *Universidad Autónoma de Madrid*
30. *Department of Surgery, Biochemistry and Molecular Biology, School of Medicine, University of Málaga, Málaga, Spain.*
31. *Department of Neurology. Hospital Universitario Donostia. San Sebastian, Spain.*
32. *Unitat Trastorns Cognitius, Hospital Universitari Santa Maria de Lleida, Lleida, Spain.*
33. *Institut de Recerca Biomèdica de Lleida (IRBLLeida), Lleida, Spain.*
34. *Servei de Neurologia, Hospital Universitari i Politècnic La Fe, Valencia, Spain.*
35. *Fundació Docència i Recerca MútuaTerrassa and Movement Disorders Unit, Department of Neurology, University Hospital Mútua Terrassa, Terrassa 08221, Barcelona, Spain.*
36. *Neurology Service, Marqués de Valdecilla University Hospital (University of Cantabria and IDIVAL), Santander, Spain.*
37. *Hospital Universitario Ramon y Cajal, IRYCIS, Madrid.*
38. *Unitat de Genètica Molecular, Institut de Biomedicina de València-CSIC, Valencia, Spain.*
39. *Department of Neurosciences. Faculty of Medicine and Nursery. University of the Basque Country, San Sebastián, Spain.*
40. *Alzheimer Research Center & Memory Clinic, Andalusian Institute for Neuroscience, Málaga, Spain.*
41. *Centro de Biología Molecular Severo Ochoa (UAM-CSIC)*
42. *Departamento de Especialidades Quirúrgicas, Bioquímica, Biología Molecular e Inmunología. Facultad de Medicina. Universidad de Málaga. Málaga (Spain).*
43. *Unidad de Trastornos del Movimiento, Servicio de Neurología y Neurofisiología. Instituto de Biomedicina de Sevilla (IBiS), Hospital Universitario Virgen del Rocío/CSIC/Universidad de Sevilla, Seville, Spain.*
44. *Fundación Pública Galega de Medicina Xenómica- CIBERER-IDIS, Santiago de Compostela, Spain.*
45. *Glenn Biggs Institute for Alzheimer's and Neurodegenerative Diseases, San Antonio, TX, USA.*
46. *Framingham Heart Study, Framingham, MA, USA.*
47. *Department of Neurology, Boston University School of Medicine, Boston, MA, USA.*
48. *Nuffield Department of Population Health Fellow of St Cross college.*
49. *Centre for Healthy Brain Ageing (CHeBA), School of Psychiatry, Faculty of Medicine, University of New South Wales, Sydney 2052, Australia.*
50. *Neuroscience Research Australia, Sydney, NSW, Australia.*
51. *Centro de Investigación Biomédica en Red de Diabetes y Enfermedades Metabólicas Asociadas, CIBERDEM, Spain, Hospital Clínico San Carlos, Madrid, Spain.*
52. *Clinical Neurochemistry Laboratory, Sahlgrenska University Hospital, Mölndal, Sweden.*
53. *Department of Psychiatry and Neurochemistry, Institute of Neuroscience and Physiology, Sahlgrenska Academy at the University of Gothenburg, Sweden.*
54. *Department of Sociology, VU University, Amsterdam, the Netherlands.*
55. *NORMENT, K.G. Jepsen Centre for Psychosis Research, Institute of Clinical Medicine, University of Oslo, Oslo, Norway.*
56. *Institute of Clinical Medicine, University of Oslo, Oslo, Norway.*
57. *University, Amsterdam, the Netherlands.*
58. *German Center for Neurodegenerative Diseases (DZNE), 53127 Bonn, Germany.*

* These authors contributed equally to this work.

+ These authors jointly supervised this work.

****Corresponding authors:**

Agustín Ruiz M.D. Ph.D.

Address: Research Center. Fundació ACE. Institut Català de Neurociències Aplicades.

C/ Marquès de Sentmenat, 57. 08029 Barcelona, Spain

Tel: +34 93.444.73.18

Fax: +34 93.410.17.01

Email id: aruiz@fundacioace.org

Sven J. van der Lee M.D. Ph.D.

Alzheimer Center Amsterdam, Department of Neurology, Amsterdam Neuroscience, Vrije Universiteit Amsterdam, Amsterdam UMC, Amsterdam, The Netherlands

Address: De Boelelaan 1117, 1081 HV, Amsterdam.

Tel: +31 624.432.956

Email id: s.j.vanderlee@amsterdamumc.nl

Conflict of Interest: None

ABSTRACT

BACKGROUND:

Disentangling the genetic constellation underlying Alzheimer's disease (AD) is important. Doing so allows us to identify biological pathways underlying AD, point towards novel drug targets and use the variants for individualised risk predictions in disease modifying or prevention trials. In the present work we report on the largest genome-wide association study (GWAS) for AD risk to date and show the combined utility of proven AD loci for precision medicine using polygenic risk scores (PRS).

METHODS:

Three sets of summary statistics were included in our meta-GWAS of AD: an Spanish case-control study (GR@ACE/DEGESCO study, $n = 12,386$), the case-control study of International Genomics of Alzheimer project (IGAP, $n = 82,771$) and the UK Biobank (UKB) AD-by-proxy case-control study ($n=314,278$). Using these resources, we performed a fixed-effects inverse-variance-weighted meta-analysis. Detected loci were confirmed in a replication study of 19,089 AD cases and 39,101 controls from 16 European-ancestry cohorts not previously used. We constructed a weighted PRS based on the 39 AD variants. PRS were generated by multiplying the genotype dosage of each risk allele for each variant by its respective weight, and then summing across all variants. We first validated it for AD in independent data (assessing effects of sub-threshold signal, diagnostic certainty, age at onset and sex) and tested its effect on risk (odds for disease) and age at onset in the GR@ACE/DEGESCO study.

FINDINGS:

Using our meta-GWAS approach and follow-up analysis, we identified novel genome-wide significant associations of six genetic variants with AD risk (rs72835061-*CHRNE*, rs2154481-*APP*, rs876461-*PRKD3/NDUF7*, rs3935877-*PLCG2* and two missense variants: rs34173062/rs34674752 in *SHARPIN* gene) and confirmed a stop codon mutation in the *IL34* gene increasing the risk of AD (*IL34-Tyr213Ter*), and two other variants in *PLCG2* and *HS3ST1* regions. This brings the total number of genetic variants associated with AD to 39 (excluding *APOE*). The PRS based on these variants was associated with AD in an independent clinical AD-case control dataset (OR=1.30, per 1-SD increase in the PRS, 95% CI 1.18-1.44, $p = 1.1 \times 10^{-7}$), a similar effect to that in the GR@ACE/DEGESCO (OR=1.27, 95% CI 1.23-1.32, $p = 7.4 \times 10^{-39}$). We then explored the combined effects of these 39 variants in a PRS for AD risk and age-at-onset stratification in GR@ACE/DEGESCO. Excluding *APOE*, we observed a gradual risk increase over the 2% tiles; when comparing the extremes, those with the 2% highest risk had a 2.98-fold (95% CI 2.12–4.18, $p = 3.2 \times 10^{-10}$) increased risk compared to those with the 2% lowest risk ($p = 5.9 \times 10^{-10}$). Using the PRS we identified *APOE* $\epsilon 33$ carriers with a similar risk as *APOE* $\epsilon 4$ heterozygotes carriers, as well as *APOE* $\epsilon 4$ heterozygote carriers with a similar risk as *APOE* $\epsilon 4$ homozygote. Considering age at onset; there was a 9-year difference between median onset of AD the lowest risk group and the highest risk group (82 vs 73 years; $p = 1.6 \times 10^{-6}$); a 4-year median onset difference (81 vs 77 years; $p = 6.9 \times 10^{-5}$) within *APOE* $\epsilon 4$ heterozygotes and a 5.5-year median onset difference (78.5 vs 73 years; $p = 4.6 \times 10^{-5}$) within *APOE* $\epsilon 4$ carriers.

INTERPRETATION:

We identified six novel genetic variants associated with AD-risk, among which one common *APP* variant. A PRS of all genetic loci reported to date could be a robust tool to predict the risk and age at onset of AD, beyond *APOE* alone. These properties make PRS instrumental in selecting individuals at risk in order to apply preventative strategies and might have potential use in diagnostic work-up.

Introduction

Alzheimer's disease (AD) is the most common neurodegenerative disorder affecting elderly populations worldwide¹. A small fraction of the occurrence of AD in patients can be explained by rare mutations which cause the autosomal dominant forms of AD (< 1%)². For non-familial cases, the genetic contribution to AD risk is estimated to be between 60–80%³ and likely consists of a combination of common and rare alleles, each with low to moderate effects on AD risk, gene–gene and gene–environmental interactions.

Thus far, multiple loci associated with AD have been described next to causal mutations in the *PSEN1*, *PSEN2* and *APP* genes. The most prominent locus, *APOE*, was detected almost 30 years ago using linkage techniques⁴. *APOE* allele $\epsilon 4$ has a strong effect, conferring a threefold increased risk for AD in heterozygous carriers of the $\epsilon 4$ allele and an 8-to-12-fold risk in the homozygous state⁵. After a long and unsuccessful search for additional AD loci, the development of single nucleotide polymorphism (SNP) arrays permitted the design of comprehensive genome-wide association studies (GWAS). Successive waves of analysis and meta-analysis with increasing sample sizes have been performed to disentangle the genetic background of AD. By combining the information from more than 80,000 participants, the International Genetics of Alzheimer's project (IGAP) recently released the largest meta-analysis of case-control studies reported to date⁶. In parallel with this case-control analysis, by-proxy AD case-control datasets of Alzheimer's disease have successfully been used to increase the statistical power of previous AD GWAS⁷. These approaches use the UK Biobank (UKB)⁸, a cohort study of over half a million individuals in the UK in which the history of dementia for the parents is used instead of traditional case-control studies⁹. The by-proxy strategy confirmed the loci identified by IGAP and identified additional candidate loci previously undetected by conventional case-control approaches^{9,10}. Overall, in addition to *APOE*, more than 30 loci have been identified to date that modify the risk of AD^{11–16}. These signals, combined with 'subthreshold' common variant associations, account for ~31% of the genetic variance of AD, leaving most of the genetic risk as yet uncharacterised¹⁷. A meta-study combining all these studies may lead to the identification of associations of genetic loci with AD and might help to confirm loci previously proposed by proxy-AD strategies but requiring additional validations. Larger GWASs are also important to identify the causative variants, pinpoint culprit genes in the AD-associated genomic regions and identify the biological pathways underlying AD.

In addition to the biological insights, disentangling the genetic constellation of common genetic variations underlying AD has clinical relevance. First, genetic associations can point towards novel drug targets. One example is the discovery of the *TREM2* gene, which has led to the development of *TREM2* modulators¹⁷. These drugs are now being evaluated in trials¹⁸ in hopes of benefiting patients in the near-distant future. Second, pre-symptomatic AD patients are increasingly included in treatment or prevention trials. To reduce the necessary duration of these costly studies, individuals at high genetic risk of developing the disease are included^{19,20} in clinical trials, such as patients carrying a mutation that causes familial AD and those carrying an *APOE* $\epsilon 4$ allele^{18,19}. Other common and rare AD loci are neglected, as the effect or frequency of the individual loci is often small. The combined effect of all these loci, however, could account for a

substantial proportion of variation in risk²¹. Indeed, combining the effects of all currently known variants results in a polygenic risk score (PRS) that is associated with conversion of mild cognitive impairment to AD^{22,23} the neuropathological hallmarks of AD, age at onset of disease^{24–26} and lifetime risk of AD²⁷. However, the discovery of more variants associated with AD warrant that PRS are updated and again validated. Further it is important to know how diagnostic certainty, age at onset and sex influence the effects of the PRS.

Here we aimed to comprehend and expand the knowledge of the genetic landscape underlying AD. We first performed a meta-GWAS integrating all currently published GWAS case-control data, by-proxy case-control data and the data from the Genome Research at Fundació ACE (GR@ACE) study²⁸. We confirm the novel observed associations in a large independent replication study. Then constructed an update of the PRS and test if the effects of the PRS are influenced by diagnostic certainty, sex and age at onset groups. Last, we test if the PRS can be used to identify individuals at highest risk.

Methods

Meta-GWAS of AD

This study utilizes the summary statistics from three AD GWAS: the summary statistics calculated from the GR@ACE²⁸ case-control study, the International Genomics of Alzheimer project (IGAP)²⁹ case-control study and UKB AD-by-proxy case-control study⁹ (Figure 1).

GR@ACE

The GR@ACE study²⁸ recruited AD patients from Fundació ACE, Institut Català de Neurociències Aplicades (Catalonia, Spain) and control individuals from three centres: Fundació ACE (Barcelona, Spain), Valme University Hospital (Seville, Spain) and the Spanish National DNA Bank Carlos III (University of Salamanca, Spain) (<http://www.bancoadn.org>). Additional cases and controls were obtained from dementia cohorts included in the Dementia Genetics Spanish Consortium (DEGESCO)³⁰. At all sites AD diagnosis was established by a multidisciplinary working group, including neurologists, neuropsychologists and social workers, according to the DSM-IV criteria for dementia and the National Institute on Aging and Alzheimer's Association's (NIA-AA) 2011 guidelines for diagnosing AD. In the present study we considered as AD cases any individuals with dementia diagnosed with probable or possible AD at any point in their clinical course. For further details on the contribution of the sites, see Supplementary Table 1. Written informed consent was obtained from all participants. The Ethics and Scientific Committees have approved this research protocol (Acta 25/2016, Ethics Committee. H., Clinic I Provincial, Barcelona, Spain).

Genotyping, quality control and imputation

DNA was extracted from peripheral blood. Genotyping was conducted using the Axiom 815K Spanish Biobank array (Thermo Fisher) at the Spanish National Centre for Genotyping (CeGEN, Santiago de Compostela, Spain) (Supplementary information, methods). We conducted previously described standard quality control prior to

imputation²⁸. In brief, individual quality control includes genotype call rates > 97%, sex checks and no excess heterozygosity; we removed population outliers as well (European cluster of 1000 Genomes). We included variants with a call rate > 95%, with minor allele frequency (MAF) > 0.01, in Hardy-Weinberg equilibrium ($p < 1 \times 10^{-4}$ in controls) and without differential missingness between cases and controls (Supplementary Table 2, Supplementary Figure 1). Imputation was carried out using the Haplotype reference consortium³¹ (HRC, full panel) and the 1000 Genomes reference panel³² (for indels only) on the Michigan Imputation server (<https://imputationserver.sph.umich.edu>). Rare variants (MAF < 0.001) and variants with low imputation quality ($R^2 < 0.30$) were excluded. Logistic regression models, adjusted for the first four ancestry principal components²⁸, were fitted using Plink (v2.00a). Population-based controls were used; therefore, age was not included as a covariate (Supplementary Table 3). After quality control steps, we included 6,331 AD cases and 6,055 control individuals and tested 14,542,816 genetic variants for association with AD.

IGAP summary statistics

GWAS summary results from the IGAP were downloaded from the National Institute on Aging Genetics of Alzheimer's Disease Data Storage Site (NIAGADS, <https://www.niagads.org/>)²⁹. Details on data generation and the analyses by IGAP have been previously described²⁹. In brief, IGAP is a large study based upon genome-wide association using individuals of European ancestry. Stage 1 of IGAP comprises 21,982 Alzheimer's disease cases and 41,944 cognitively normal controls from four consortia: the Alzheimer Disease Genetics Consortium (ADGC), the European Alzheimer's Disease Initiative (EADI), the Cohorts for Heart and Aging Research in Genomic Epidemiology Consortium (CHARGE) and the Genetic and Environmental Risk in AD Consortium Genetic and Environmental Risk in AD/Defining Genetic, Polygenic and Environmental Risk for Alzheimer's Disease Consortium (GERAD/PERADES). Summary statistics are available for 11,480,632 variants, both genotyped and imputed (1000 Genomes phase1v3). In Stage 2, 11,632 SNPs were genotyped in an independent set of 8,362 Alzheimer's disease cases and 10,483 controls.

UK Biobank summary statistics

UK Biobank data, including health, cognitive and genetic data, were collected on over 500,000 individuals aged 37–73 years from across Great Britain (England, Wales and Scotland) at the study baseline (2006–2010) (<http://www.ukbiobank.ac.uk>)³³. Several groups have demonstrated the utility of self-report of parental history of AD for case ascertainment in GWAS (Proxy-AD approach)^{7,9,10}. For this study we used the published summary statistics of Marioni et al.⁹. They included, after stringent quality control, 314,278 unrelated individuals for whom AD information was available on at least one parent in UK Biobank (<https://datashare.is.ed.ac.uk/handle/10283/3364>). In brief, the genetic data of 27,696 participants whose mother had dementia (maternal cases) were compared with the 260,980 participants whose mother did not have dementia. Likewise, the 14,338 participants whose father had dementia (paternal cases) were compared with the 245,941 participants whose father did not have dementia⁹. The phenotype of the parents is independent, and therefore the estimates could be meta-analysed. After analysis, the effect estimates were made comparable to a case-control setting. Further information on the transformation of the effect sizes can be found elsewhere^{9,34}. The data

available comprises summary statistics of 7,794,553 SNPs imputed to the HRC reference panel (full panel).

Data analysis

After study-specific variant filtering and quality-control procedures, we performed a fixed-effects inverse-variance-weighted meta-analysis³⁵ on the summary statistics mentioned above.

To determine the variants with the strongest association per genomic region, we performed clumping on SNPs with a genome-wide significant p -value ($p < 5 \times 10^{-8}$) (Plink v1.90, maximal linkage disequilibrium (LD) with $R^2 < 0.001$ and physical distance 1 Mb). In the *APOE* region, the significance level ($p \sim 0$ for multiple SNPs) interferes with clumping; therefore, only the variants determining the *APOE* $\epsilon 4$ and *APOE* $\epsilon 2$ alleles were kept in this region³⁶ (rs429358 and rs7412). LD information was calculated using the GR@ACE imputed genotypes as a reference. Chromosomal regions associated with AD in previous studies were excluded from follow-up (Lambert et al.¹², Kunkle et al.⁶, Jansen et al.¹⁰). We also performed a functional annotation using FUMA³⁷ (see ‘Supplementary Methods’).

Confirmation of loci containing novel associations with AD loci

We searched for independent evidence of association with AD for the variants with suggestive association ($p < 10^{-5}$) located in proximity (200 Kb) to nine loci selected for follow-up. This strategy was adopted in order to allow for potential refinement of the top associated variants during the replication effort. For this confirmatory experiment we studied 19,089 AD cases and 39,101 controls not used in the GRA@CE or IGAP studies from 16 additional cohorts many of them collected and analysed by the European Alzheimer Disease Biobank project (JPND-EADB). See Supplementary Table 3 for details of AD cases included in this study and their origin and Supplementary Information for descriptions of the replication cohorts). Logistic regression models were fitted with a minimum of four principal ancestry components to correct for the population substructure. Inverse variance weighted meta-analysis was performed on all datasets in both discovery and follow-up stages.

Conditional analyses were performed in regions where multiple variants were associated with AD using logistic regression models adjusting for the genetic variants in the region. In the chr17-*SCIMP* region we adjusted rs75511804 for rs72835017, and in the chr16-*PLCG2* region we adjusted rs12444183 for rs3935877 and rs72824905.

Polygenic Risk Scores

Validation of PRS in clinical and pathologically confirmed AD cases

We calculated a weighted individual PRS based on the 39 genetic variants that showed genome-wide significant evidence of association with AD in the present study (Figure 2, Supplementary Table 4). Selected variants were directly genotyped or imputed with high quality (median imputation score $R^2 = 0.93$). PRS were generated by multiplying the genotype dosage of each risk allele for each variant by its respective weight, and then

summing across all variants. We weighted by the effect size from previous IGAP studies (Kunkle⁶ (36 variants), Sims¹⁶ (2 variants), Jun³⁸ (*MAPT* locus), Supplementary Table 4).

We validate the PRS in a sample of 676 AD cases diagnosed based on clinical criteria and 332 pathologically confirmed AD cases from the European Alzheimer's Disease Biobank (EADB)–Fundació ACE/Barcelona Brain Bank dataset (EADB–F.ACE/BBB, Supplementary information). This dataset was not used in any genetic study. In this dataset all pathologically confirmed cases were scored for the presence or absence of concomitant pathologies. In all analyses we compared the AD patients to the same population-based control dataset (n = 1,386). We performed analyses to test the robustness of the PRS. We first tested the effect of adding additional variants below the genome-wide significance threshold using a pruning and thresholding approach. For this we used the summary statistics of IGAP²⁹ study and we selected independent variants using the *clump_data()* function from the TwoSampleMR package (version 0.4.25). We used standard settings for clumping ($R^2=0.001$ and window=1MB) and increasing p-value thresholds ($>1\times 10^{-7}$, $>1\times 10^{-6}$, $>1\times 10^{-5}$, $>1\times 10^{-4}$, $>1\times 10^{-3}$, $>1\times 10^{-2}$). We tested the association of the resulting with clinically diagnosed AD patients and pathologically confirmed AD patients. To evaluate the effect of diagnostic certainty we tested if the PRS was different between these two AD groups. For the PRS with 39 genome-wide significant variants we tested if there were sex-specific effects of the PRS, if the effect was different age-of-onset groups of AD and the effect of the PRS in the presence of concomitant brain pathologies.

Risk stratification of the validated PRSs

After validation of the PRS we searched for the groups at largest risk of AD in the large GR@ACE dataset (6,331 AD cases and 6,055 controls). We stratified the population into PRS (percent)tiles taking into account survival bias that is anticipated at old age²⁷. To eliminate selection bias calculated the boundaries of the percentiles in the control participants aged 55 years and younger (n = 3,546). Based on the boundaries from this population the rest of the controls and all AD cases were then assigned into their appropriate percentiles. We first explored risk stratification using only the PRSs. For this we split the PRSs into 50 groups (2-percentiles) and compared all groups of subjects with the group that had the lowest PRS. Secondly, we explored risk stratification considering both *APOE* genotypes and the PRSs. The *APOE* genotypes were pooled in analyses as *APOE* $\epsilon 22/\epsilon 23$ (n = 998, split into 7 PRS groups), *APOE* $\epsilon 33$ (n = 7,611, split into 25 PRS groups), *APOE* $\epsilon 24/\epsilon 34$ (n = 3,399, split into 15 PRS groups) and *APOE* $\epsilon 44$ (n = 382, split into 3 PRS groups). We studied the effect of PRS across groups of individuals stratified by *APOE* genotypes with the lowest PRS group (*APOE* as the reference group using logistic regression models adjusted for four population ancestry components). Finally, we compared the median age at onset using a Wilcoxon test. All analyses were done in R (version 3.4.2).

Results

Genome-wide association study

We performed a meta-analysis of the summary statistics of the GR@ACE study (6,331 AD cases and 6,055 controls), the IGAP consortium (up to 30,344 AD cases and 52,427 controls) and the UK Biobank AD-proxy study (27,696 cases of maternal AD with 260,980 controls and 14,338 cases of paternal AD with 245,941 controls (Figure 1, Supplementary Table 3). Although we observed inflation in the resulting summary statistics (λ median = 1.08; see Supplementary Figure 2), it was not driven by an unmodelled population structure (LD score regression intercept = 1.036). We compared the results obtained to a second meta-analysis using only the case-control datasets (IGAP Stage 1–2 and GR@ACE datasets as a sensitivity analysis to identify false negative results due to possible dilution by the by-proxy approach in the UK Biobank (Supplementary Table 5). We identified a genome-wide significant association ($p < 5 \times 10^{-8}$) for 36 independent genetic variants in 35 genomic regions and two additional suggestive associations. The *APOE* locus contained two independent signals corresponding to the $\epsilon 4$ and $\epsilon 2$ alleles, respectively. The meta-analysis, including the by-proxy summary statistics, identified 11 additional loci reaching genome-wide significance with respect to case-control-only results. The incorporation of by-proxy summary statistics did not show an association in two previously reported AD loci (rs7185636-*IQCK* and rs386572859-*MAPT*) by the IGAP consortium^{29,38} and replicated in the GR@ACE dataset (OR = 0.93 [0.90-0.95], $p = 4.5 \times 10^{-8}$ and OR = 0.81 [0.75-0.87], $p = 7.9 \times 10^{-9}$, respectively). We observed high correlation between the effect estimates from the case-control and by-proxy approach for the significant loci ($R^2 = 0.994$, $p = 8.1 \times 10^{-37}$; Supplementary Figure 3).

Among the 36 detected genome-wide significant (GWS) variants, 31 variants (86%) were reported in previously published studies or were in complete LD with known AD loci (Supplementary Table 5). We followed up the four novel genetic regions. We also followed up five genomic regions of interest, which were still awaiting replication (*PLCG2* and *IL-34*)⁹, in incomplete linkage disequilibrium with top SNPs previously reported loci^{10,39} (a locus near the *HS3ST1*²⁰ gene) or showed only suggestive level of association ($p < 1 \times 10^{-7}$; *ELK2AP* and *SPPL2A*). We tested all variants in these nine genomic loci reaching suggestive level of association ($p < 1 \times 10^{-5}$) in the replication cohorts using 16 independent European-based cohorts (n cases = 19,087 and n controls = 39,101). In these nine genomic regions we tested 384 variants in the follow-up (Supplementary Table 6).

In the follow-up data found association signal in the same direction as the discovery in seven out of the nine genomic regions (Table 1, Supplementary Table 6 and Supplementary Figures 4–12). We combined discovery and follow-up and found in these seven genomic regions, nine independent genetic variants that reached GWS significance for association with AD (Table 1). Four of the genomic regions were not previously associated with AD and those are marked in the Manhattan-plot (Figure 2). We briefly discuss the results below.

Two genomic regions contain strong candidate AD genes (*APP* and *SHARPIN*) but variants in the region had not reached genome-wide significance in earlier meta-

GWAS^{15,35}. In *APP* we identified a very common (MAF = 0.46) intronic variant that associated with a reduced risk of AD (rs2154481, OR = 0.95 [0.93–0.96], $p = 9.3 \times 10^{-10}$). In *SHARPIN* we found two missense mutations (p.Ser17Phe and p.Pro294Ser) that are in linkage equilibrium ($R^2 = 1.3 \times 10^{-6}$, $D' = 0.014$ and $p = 0.96$). The *SHARPIN* p.Ser17Phe (MAF = 0.085) was significant in the discovery as well as the follow-up. In all data combined we found the variant associated with a 1.14-fold increased risk of AD (rs34173062, 95%CI 1.10–1.18, $p = 9.6 \times 10^{-13}$). *SHARPIN* p.Pro294Ser (MAF = 0.052) was significant after meta-analysing all data (rs34674752, OR = 1.13 [1.09–1.18], $p = 1.0 \times 10^{-9}$). The fourth variant is in a genomic region at chromosome 2, close to the genes *PRKD3* and *NDUFAF7*. The variant rs876461 (MAF = 0.143) was borderline significant in discovery (OR = 1.07 [1.04–1.09], $p = 9.1 \times 10^{-7}$) but emerged as the most significant variant in the region after in the combined analysis (OR = 1.07 [1.05–1.09], $p = 1.3 \times 10^{-9}$). The fifth association was in the 3'-UTR region of *CHRNE* (Cholinergic Receptor Nicotinic Epsilon Subunit). rs72835061 (MAF = 0.085) associated with a 1.09-fold increased risk of AD (95%CI 1.06–1.11, $p = 1.5 \times 10^{-10}$). This variant is relatively close to the *SCIMP*¹⁰ locus (333 Kb) and was in weak LD ($R^2 = 0.139$, $D' = 0.446$ and $p < 0.0001$) with the *SCIMP* top variant (rs75511804-*SCIMP*). A conditional analysis, including GR@ACE and the independent follow-up (Supplementary Table 7), showed similar effect sizes for rs72835017 after adjustment for rs75511804-*SCIMP* (and vice versa), in line with two independent signals that are in weak LD.

We strengthened the evidence of association with AD for three genomic regions. First, rs4351014 with AD (combined-OR = 0.94 [0.92–0.95], $p = 9.2 \times 10^{-12}$). This variant is in a gene poor region but has previously been linked to *HS3ST1*. A stop codon mutation (rs4985556, Tyr213Ter, MAF = 0.111) in the interleukin 34 (*IL34*) gene was previously reported to be associated in a by-proxy approach⁹. We confirmed this associated with an increased AD risk in both discovery and follow-up (combined OR = 1.08 [1.06–1.11], $p = 3.9 \times 10^{-10}$). The genomic region that contains the *PLCG2* gene has been associated with AD twice (the rare missense variant p.P522R in the *PLCG2* gene¹⁶ and rs12444183 near the promotor region of *PLCG2*⁹). After combination of discovery and follow-up a third independent association signal emerged in the *PLCG2* region (rs3935877, effect allele frequency = 0.868, OR = 0.92 [0.90–0.95], $p = 6.9 \times 10^{-9}$). We also strengthen the association of *PLCG2*-rs12444183 with AD (MAF = 0.407, combined-OR = 0.95 [0.93–0.96], $p = 6.8 \times 10^{-12}$). Conditional analyses in the *PLCG2* region showed the association signal of all three variants (including the missense variant p.P522R in *PLCG2*¹⁶) in the *PLCG2* locus are independent (Supplementary Table 8).

The two loci reaching suggestive evidence of association (Table 1) in the discovery (rs7153315-*ELK2AP* and rs76523702-*SPPL2A*) did not replicate in the follow-up (rs76523702-*SPPL2A*, $p = 0.35$) or showed association in the opposite direction (rs7153315-*ELK2AP*, OR_{discovery} = 0.94 vs OR_{follow-up} = 1.16, Table 1).

To link the novel variants to specific genes and functional motifs in their genomic regions, we applied different strategies implemented on the FUMA platform (see ‘Supplementary Methods’). The selected candidate genes were implicated at least in three mapping strategies using this approach (*APP*, *IL34*, *CHRNE*, *PLCG2* and *SHARPIN*, Supplementary Tables 9–12, Supplementary Figure 13).

Validation of PRS for dementia

In total, after combined meta-analysis, 39 variants have been associated with AD at genome-wide significance (excluding the *APOE* region). We used these 39 variants and IGAP weighted effects to construct a PRS (Supplementary Table 4).

The PRS showed a stronger association with the pathologically confirmed AD cases (OR = 1.38, per 1-SD increase in the PRS, 95% CI [1.21–1.58]) than with clinical AD cases (OR = 1.30, 95% CI [1.18–1.44]) (Figure 3A). However, this difference was not statistically significant. We then investigated whether adding additional variants below the genome-wide significance threshold would lead to increased performance of the PRS. In both pathological and clinical AD cases, the association (as measured by the *p*-value of the effect estimate from logistic regression models) of the PRS decreased when adding to PRS variants below the conventional GWAS significance threshold (Figure 3A).

Concomitant brain pathologies were present in 84% of histopathological confirmed cases, and the PRS was associated AD cases with all tested concomitant pathologies. The strongest risk increase per 1-SD of the PRS was observed with concomitant hippocampal sclerosis (OR = 1.67, 95% CI [1.22–2.28]), Figure 3B). The smallest effect for the PRS was observed in the 16% of cases that had only AD pathology (OR = 1.22, 95% CI [0.92–1.61]). The AD patients in our series often had more than one concomitant pathology (48.8%), but there was no difference in the effect estimate of the PRS when more than one pathology was present (Figure 3B).

Finally, we investigated the differential effect of sex and age at onset on the effect estimate of the PRS (Figure 3C). The effect of the PRS was comparable in males (OR = 1.33 per 1-SD, $p = 5.8 \times 10^{-4}$) and females (OR = 1.32 per 1-SD, $p = 2.5 \times 10^{-7}$). Overall, there were significant effects of the PRS on AD risk in all five-year age-at-onset groups. The strongest effect was observed in the group with an age at onset of 70–75 (OR = 1.58, per 1 SD, $p = 4.1 \times 10^{-7}$).

Risk stratification using polygenic risk scores and APOE

In the independent AD cohort, the PRS of 39 variants showed the strongest association with AD (Figure 3). We therefore used this PRS in the large GR@ACE dataset (6,331 AD cases and 6,055 controls) to identify those at highest genetic risk of AD. Overall, the PRS was associated with a 1.27-fold (95% CI 1.23–1.32) increased risk for every standard deviation increase in the PRS ($p = 7.3 \times 10^{-39}$). When we stratified all individuals into 2% percentiles of the PRS, we observed a gradual risk increase over the 2% percentile groups (Figure 4A, Supplementary Table 13), and when comparing the extremes, those with the 2% highest risk had a 2.98-fold (95% CI 2.12–4.18) increased risk compared to those with the 2% lowest risk ($p = 3.2 \times 10^{-10}$).

We then studied the ability of the PRS to identify high individuals at risk of the subjects within and across *APOE* genotype groups. The *APOE* categories were split into PRS subgroups depending on number of subjects available: seven PRS groups for the *APOE* $\epsilon 22/\epsilon 23$ genotype, 25 for *APOE* $\epsilon 33$, 15 for *APOE* $\epsilon 24/\epsilon 34$ and three for *APOE* $\epsilon 44$. Within each *APOE* genotype category we found that the group of individuals with the highest PRS score had a higher risk compared to the lowest scored group (Figure 4B).

There was a 2.48-fold increased risk for *APOE* $\epsilon 22/\epsilon 23$ ($p = 3.4 \times 10^{-4}$), 2.67-fold for *APOE* $\epsilon 33$ ($p = 3.5 \times 10^{-9}$), 2.47-fold for *APOE* $\epsilon 24/\epsilon 34$ ($p = 6.8 \times 10^{-6}$) and 2.02-fold for *APOE* $\epsilon 44$ ($p = 3.4 \times 10^{-2}$). The PRS is able to modify the risk associated with *APOE* such that *APOE* $\epsilon 22/\epsilon 23$ carriers with the highest PRS has a significantly higher risk than *APOE* $\epsilon 33$ carriers in the lowest scored group ($p = 7.8 \times 10^{-4}$), *APOE* $\epsilon 33$ carriers in the highest PRS group has a risk comparable to *APOE* $\epsilon 4$ heterozygote carriers with the lowest PRS ($p = 0.40$), and *APOE* $\epsilon 4$ heterozygotes with the highest PRS was not significantly different from *APOE* $\epsilon 4$ homozygotes with the lowest PRS ($p = 0.68$). Finally, we compared the risk extremes and found a 16.2-fold (95% CI 8.84–29.5, $p = 1.5 \times 10^{-19}$) increased risk for the highest-PRS group compared to the lowest-PRS group (the highest PRS *APOE* $\epsilon 44$ group vs the lowest PRS *APOE* $\epsilon 22/\epsilon 23$ group) (Supplementary Table 14).

The stratification of individuals by PRS and *APOE* genotype also influences age at onset. We found a significant ($p_{Wilcoxon} = 1.7 \times 10^{-6}$) difference of 9 years in the median age at onset in individuals with the lowest PRS (the median onset is 82 years for *APOE* $\epsilon 22/\epsilon 23$ with the lowest PRS) compared with individuals with the highest risk (the median onset is 73 years for *APOE* $\epsilon 44$ with the highest PRS risk) (Figure 4C). The PRS did not determine age at onset in either *APOE* $\epsilon 22/\epsilon 23$ (lowest = 82 years, highest = 83 years, $p_{Wilcoxon} = 0.39$) or *APOE* $\epsilon 33$ (lowest = 82 years, highest = 81 years, $p = 0.16$). By contrast, in the *APOE* $\epsilon 4$ heterozygotes, the PRS determined a 4-year difference ($p_{Wilcoxon} = 6.9 \times 10^{-5}$) in median age at onset between the lowest-risk (81 years) and highest-risk (77 years) tiles. Moreover, although the PRS did not have a significant effect on risk within *APOE* $\epsilon 4$ homozygotes, it did determine a 5.5-year difference in median age at onset ($p_{Wilcoxon} = 4.6 \times 10^{-5}$) between the low-risk (median = 78.5 years) and high-risk (73 years) tiles.

Discussion

In the present work we report on the largest meta-GWAS for AD risk to date comprising genetic information of 467,623 individuals of European ancestry. Using our meta-GWAS approach and follow-up analysis, we identified four genomic regions that are significantly associated with the risk of AD for the first time (in *CHRNE*, *APP*, *SHARPIN* and near *PRKD3/NDUFAF7*). We also strengthen the association of the *PLCG2* region with AD by the identification of an additional association signal in the region. This brings the total of genetic variants associated with AD to 39 (excluding *APOE* variants and the very rare coding variants). We validated a PRS based on these variants and show that this PRS can identify individuals at highest genetic risk of AD independent of *APOE*. In fact, with this PRS we can identify *APOE* $\epsilon 3$ homozygote carriers who have comparable risk for AD as *APOE* $\epsilon 4$ heterozygote carriers, as well as *APOE* $\epsilon 4$ heterozygote carriers who have comparable risk for AD as *APOE* $\epsilon 4$ homozygotes carriers. We also demonstrate that the PRS determines a 4 to 5.5-year age-at-onset difference within *APOE* $\epsilon 4$ carriers. We conclude that the PRS of the currently known genetic risk of AD captures important differences in AD risk and age at onset. The effects of both risk stratification and age at onset are important for research studies and clinical trials.

The work presented builds on a long, ongoing global effort of genetic researchers to identify genetic loci associated with AD using family-based studies and genome-wide

association studies. We have summarised the landscape of AD genetics of the last 30 years in Figure 5. We can observe that with the increasing sample sizes across studies, more and more variants are found. After review of the literature, we estimate that the culprit variant is known in only 15 (40%) out of 39 loci (Table 2). Therefore, much is to be gained from candidate gene studies in these other loci. With the current work we have added six novel genetic variants in five genetic loci to the landscape; they are discussed below.

The most interesting finding of this work was the confirmation of a very common variant in the *APP* locus (rs2154481, MAF (C-allele) = 0.483). The C-allele of this SNP confers subtle protection against AD to the carriers (OR = 0.95 [0.94-0.96], $p = 1.39 \times 10^{-11}$). The genetic marker is in a DNase hypersensitive area of 295 bp (chr21:27473781-27474075) probably involved in the transcriptional regulation of the *APP* gene. Indeed, the variant is an eQTL for the *APP* mRNA and antisense transcript of the *APP* gene named AP001439.2 in public eQTL databases⁴⁰ (Supplementary Figure 14). Importantly in the dorsolateral prefrontal cortex of 726 individuals⁴¹, the protective variant increased expression of the *APP* transcript.

Additional functional evidence supporting the role of this region in the modulation of the *APP* transcript has been published recently⁴². Specifically, Craig et al. describe a block of 13 SNPs within the *APP* locus associated with intellectual abilities in children. This LD block, including our top hit for AD (rs2154481), was associated with intelligence (IQ) in children from the Avon Longitudinal Study of Parents and Children (ALSPAC, $n = 5,165$, $\beta = 1.36$, $p = 3.5 \times 10^{-5}$ for the rs2154481 C-allele). The authors suggest that this LD block within *APP* is involved in the control of gene expression in this locus. Using EMSA and luciferase reporter assays, they demonstrate that the C-allele of a linked SNP (rs2830077) increased the TF_{CP2} transcription factor avidity to its binding site and increased the enhancer activity of this specific intronic region⁴². Interestingly, the C-allele of the proposed marker (rs2830077) is in high LD with the C-allele of rs2154481 detected in our study (LDlink, $D' = 0.94$, $R^2 = 0.87$, $p < 0.0001$). The results support increased *APP* gene expression. It is not necessary to mention that the *APP* locus has been one of the major drivers of the classic amyloid hypothesis for AD^{43,44}. Now, our results reconcile autosomal dominant and complex Alzheimer disease genetic causality. The incontrovertible demonstration of the existence of the common variant within the *APP* associated with sporadic AD and full penetrance mutations affecting autosomal dominant AD strongly supports a common causal path. Hence, our results ultimately confirm the role of *APP* physiology in not only early-onset Alzheimer's disease but also late-onset AD, as recently proposed by the IGAP consortium²⁹. Nevertheless, the expression results linked to the rs2154481 might appear somehow counterintuitive because increased expression of the *APP* mRNA appeared to be related to disease protection. This could be due to potential *hormesis* or U-effect properties of this locus, where discrete increases of the wild-type (non-mutated) *APP* transcript could be protective and increased expression of the mutant gene might be harmful⁴⁵. The *hormesis* theory, if true, might help to explain the accelerated cognitive deterioration observed in AD patients treated to reduce beta-amyloid in their brain using beta-secretase inhibitors^{46,47}. An alternative hypothesis proposes that rs2154481 mechanisms could be related to the overexpression of protective fragments of the APP protein⁴⁸. Regardless, we feel that more basic research is needed to understand the observed association. We are confident that disentangling first the culprit variant and then the molecular mechanism associated with rs2154481 hit will help to refine the amyloid hypothesis.

We found two missense variants in *SHARPIN* associated with AD. Both variants have a relatively large effect (Figure 5), which strongly suggests that *SHARPIN* is the culprit gene in the locus. *SHARPIN* was proposed as a candidate gene for AD by prioritisation of GWAS signals using protein network analysis⁴⁹ and by genetic association in the Japanese population⁵⁰. In the Japanese study, a rare nonsynonymous variant, rs572750141 (NM_030974.3:p.Gly186Arg) was associated at suggestive significance with an increased risk of AD. The amino-acid change resulted in aberrant cellular localisation of the variant protein and attenuated the activation of NF- κ B, a central mediator of inflammatory and immune responses. Furthermore, spontaneous mutations in the mouse *SHARPIN* gene resulted in immune system dysregulation⁵¹, and rs34173062 was associated with changes in blood cell indices—specifically myeloid white cell and compound white cell⁵² changes. Our findings confirm *SHARPIN* as an important AD gene, and the effect of the missense mutations on immunity can be directly studied in cell models.

We also found a *PRKD3/NDUFAF7* signal in our meta-GWAS, but the top hit shifted during the overall meta-analysis. Still, the locus retained genome-wide significance, requiring future independent replication. It is important to emphasise that it is an excellent candidate for further follow-up. The protein kinase D (PKD) family of serine/threonine protein kinases occupy a unique position in signalling pathways initiated by diacylglycerol and protein kinase C. PKDs are involved in resistance to oxidative stress, cell survival, migration, differentiation and proliferation⁵³.

We confirmed an intronic variant in *CHRNE* gene (rs72835061). Functional analysis of the discovery dataset already supported *CHRNE* as the most likely culprit gene. In fact, the rs72835061 variant is a strong eQTL of *CHRNE* in which the allele A increases the expression in the brain and many other tissues according to GTEx (top differential expression in the frontal cortex, $p = 2.1 \times 10^{-13}$) (Supplementary Figure 15). The *CHRNE* locus encodes the *Homo sapiens* cholinergic receptor (AChR), nicotinic epsilon, which is expressed in muscles and associated with congenital myasthenic syndrome (fast-channel type)⁵⁴. Congenital myasthenic syndromes (CMSs) are a group of rare genetic disorders of the neurological junction that can result in structural or functional weakness. A change in the ϵ subunit leads to an increase or decrease in AChR protein signalling, which impairs cell-to-cell communication in the neuromuscular junction⁵⁵. The detection of a potential hypermorph allele linked to AD risk and affecting cholinergic function could re-introduce this neurotransmitter pathway into the search for preventative strategies. Further functional studies are needed to consolidate this hypothesis.

For the *PLCG2* locus we obtained independent replication for rs12444183 and new genome-wide significance for rs3935877. The rare protective missense mutation in *PLCG2*¹⁶ (p.Pro522Arg) and now two other different haplotypes around *PLCG2* associated with AD reinforce the role of this genomic region in AD susceptibility. The dissection of the molecular mechanism behind these potential regulatory variants might help to elucidate the gain or loss of the function mechanism of the *PLCG2* gene. This information could be critical for drug-targeting purposes⁵⁶.

So far not much attention has gone to a loss-of-function variant (p.Tyr213Ter) in interleukin *IL34*. In a previous AD-by-proxy study, Marioni et al.⁹ suggested *IL34*-rs4985556, but independent replication was pending. Interleukin-34 is a cytokine that

promotes the differentiation and viability of monocytes and macrophages through the colony stimulating factor 1 receptor (CSF-1R)⁵⁷. It promotes the release of proinflammatory chemokines and, thereby plays an important role in innate immunity and inflammatory processes⁵⁸. Furthermore, microglia treated with IL-34 attenuated the oligomeric amyloid- β neurotoxicity in primary neuron-microglia co-cultures⁵⁹. Intracerebroventricular administration of IL-34 ameliorated the impairment of associative learning and reduced oligomeric amyloid- β levels in an *APP/PS1* transgenic mouse model of AD. Therefore, this stop codon could increase the risk of AD by reducing the neuroprotective properties of *IL34* against the neurotoxicity of oligomeric amyloid- β or by modulating microglia reactivity in AD brains. The finding suggests that the generation of recombinant IL-34-based therapies could be a promising strategy for combating AD⁶⁰.

Finally, in this study, we explored the potential utility of the PRS using the extended panel of common genetic variants detected. We demonstrated how PRS modifies the risk and onset of AD within *APOE* genotypes. The carriers of high-risk individuals into clinical trials is relevant as *APOE* $\epsilon 4$. The risk modification by the joint effect of common variants was most pronounced in *APOE* $\epsilon 4$ carriers, in whom there was a difference of up to 4 years in onset age between the low- and high-risk tiles of the PRS in *APOE* $\epsilon 34$ and a 4.5-year difference in *APOE* $\epsilon 44$.

The added value of PRSs of common variants with small effects in terms of improved discrimination between AD cases and controls was reported previously as marginal^{22,26,61,62}. Our study and others recently published^{24,26,27} showed, however, that their effects are substantial for risk and age at onset. We show that the PRS could be instrumental in clinical diagnosis for AD, the effect of the PRS was similar in men and women, and there is risk differentiation at all ages of onset. This shows the wide applicability and robustness of PRS. We did not observe that adding a sub-threshold signal from GWAS improved the PRS, as had been previously suggested⁶². The identification of subgroups at high genetic risk of AD with an earlier disease onset in the general population has important implications for precision medicine. Pathological changes related to AD begin to develop up to decades before the earliest clinical symptoms⁶³. Therefore, preventive interventions are increasingly introduced in the subgroup of individuals with a high genetic risk at a younger age^{19,20} reducing the duration of the trials and thus giving them the opportunity to access the most promising treatments for high-risk individuals. In this context, *APOE* $\epsilon 4$ homozygotes carriers are considered high risk, but as shown here the subjects with the highest PRS values and carrying one copy of *APOE* $\epsilon 4$ have a similar risk (Figure 4B). This is relevant as this group represent ~1% of our control population, the same percentage as all *APOE* $\epsilon 4$ homozygotes. However, further validation on the effect of proposed PRS in longitudinal series of healthy and mild cognitive impairment (MCI) subjects, in context of other biomarkers (e.g. imaging) are mandatory to determine the predictive utility of this paradigm. With continued identification of culprit variants and additional risk loci, we anticipate that the precision of PRS will be further enhanced⁶⁴.

In sum, the current work reinforces the importance of increasing the sample size in future meta-analyses to identify novel genetic associations with AD and refine known loci to converge on the culprit variants. We described six novel associations with AD of common alleles in or near the genes: *APP*, *PLCG2*, *CHRNE*, *SHARPIN* and *PRKD3/NDUFAF7*. These signals reinforce that AD is complex disease in which amyloid processing and

immune response play key roles. We add to the growing body of evidence that polygenic scores of all genetic loci to date, in combination with *APOE* genotypes, are robust tools for predicting risk and age at onset of AD. These properties make PRS promising in selecting individuals at risk in order to apply preventative strategies.

Acknowledgments

We would like to thank patients and controls who participated in this project. The present work has been performed as part of the doctoral program of I. de Rojas at the Universitat de Barcelona (Barcelona, Spain). The Genome Research @ Fundació ACE project (GR@ACE) is supported by Grifols SA, Fundació bancaria ‘La Caixa’, Fundació ACE, and CIBERNED. A.R. and M.B. receive support from the European Union/EFPIA Innovative Medicines Initiative Joint undertaking ADAPTED and MOPEAD projects (grant numbers 115975 and 115985, respectively). M.B. and A.R. are also supported by national grants PI13/02434, PI16/01861, PI17/01474 and PI19/01240. Acción Estratégica en Salud is integrated into the Spanish National R + D + I Plan and funded by ISCIII (Instituto de Salud Carlos III)–Subdirección General de Evaluación and the Fondo Europeo de Desarrollo Regional (FEDER–‘Una manera de hacer Europa’). Some control samples and data from patients included in this study were provided in part by the National DNA Bank Carlos III (www.bancoadn.org, University of Salamanca, Spain) and Hospital Universitario Virgen de Valme (Sevilla, Spain); they were processed following standard operating procedures with the appropriate approval of the Ethical and Scientific Committee.

Amsterdam dementia Cohort (ADC): Research of the Alzheimer center Amsterdam is part of the neurodegeneration research program of Amsterdam Neuroscience. The Alzheimer Center Amsterdam is supported by Stichting Alzheimer Nederland and Stichting VUmc fonds. The clinical database structure was developed with funding from Stichting Dioraphte. Genotyping of the Dutch case-control samples was performed in the context of EADB (European Alzheimer DNA biobank) funded by the JPco-fuND FP-829-029 (ZonMW projectnumber 733051061). 100-Plus study: We are grateful for the collaborative efforts of all participating centenarians and their family members and/or relations. This work was supported by Stichting Alzheimer Nederland (WE09.2014-03), Stichting Dioraphte, horstingstuit foundation, Memorabel (ZonMW projectnumber 733050814) and Stichting VUmc Fonds. Genotyping of the 100-Plus Study was performed in the context of EADB (European Alzheimer DNA biobank) funded by the JPco-fuND FP-829-029 (ZonMW projectnumber 733051061). Longitudinal Aging Study Amsterdam (LASA) is largely supported by a grant from the Netherlands Ministry of Health, Welfare and Sports, Directorate of Long-Term Care. The authors are grateful to all LASA participants, the fieldwork team and all researchers for their ongoing commitment to the study.

This work was supported by a grant (European Alzheimer DNA BioBank, EADB) from the EU Joint Programme – Neurodegenerative Disease Research (JPND) and also funded by Inserm, Institut Pasteur de Lille, the Lille Métropole Communauté Urbaine, the French government’s LABEX DISTALZ program (development of innovative strategies for a transdisciplinary approach to Alzheimer’s disease). Full acknowledgments for the studies that contributed data can be found in the Supplementary Note. We thank the numerous participants, researchers, and staff from many studies who collected and contributed to the data.

We thank the International Genomics of Alzheimer's Project (IGAP) for providing summary results data for these analyses. The investigators within IGAP contributed to the design and implementation of IGAP and/or provided data but did not participate in analysis or writing of this report. IGAP was made possible by the generous participation of the control subjects, the patients, and their families. The i-Select chips was funded by the French National Foundation on

Alzheimer's disease and related disorders. EADI was supported by the LABEX (laboratory of excellence program investment for the future) DISTALZ grant, Inserm, Institut Pasteur de Lille, Université de Lille 2 and the Lille University Hospital. GERAD was supported by the Medical Research Council (Grant n° 503480), Alzheimer's Research UK (Grant n° 503176), the Wellcome Trust (Grant n° 082604/2/07/Z) and German Federal Ministry of Education and Research (BMBF): Competence Network Dementia (CND) grant n° 01GI0102, 01GI0711, 01GI0420. CHARGE was partly supported by the NIH/NIA grant R01 AG033193 and the NIA AG081220 and AGES contract N01-AG-12100, the NHLBI grant R01 HL105756, the Icelandic Heart Association, and the Erasmus Medical Center and Erasmus University. ADGC was supported by the NIH/NIA grants: U01 AG032984, U24 AG021886, U01 AG016976, and the Alzheimer's Association grant ADGC-10-196728.

This research has been conducted using the UK Biobank public resource obtained through the University of Edinburgh Data Share (<https://datashare.is.ed.ac.uk/handle/10283/3364>).

Bibliography

1. 2018 Alzheimer's disease facts and figures. *Alzheimer's Dement.* **14**, 367–429 (2018).
2. Champion, D. *et al.* Early-onset autosomal dominant Alzheimer disease: prevalence, genetic heterogeneity, and mutation spectrum. *Am. J. Hum. Genet.* **65**, 664–70 (1999).
3. Gatz, M. *et al.* Role of Genes and Environments for Explaining Alzheimer Disease. *Arch. Gen. Psychiatry* **63**, 168 (2006).
4. Pericak-Vance, M. A. *et al.* Linkage studies in familial Alzheimer disease: evidence for chromosome 19 linkage. *Am. J. Hum. Genet.* **48**, 1034–50 (1991).
5. Corder, E. & Saunders, A. Gene dose of apolipoprotein E type 4 allele and the risk of Alzheimer's disease in late onset families. *Science (80-.)*. **8**, 41–43 (1993).
6. Kunkle, B. W. *et al.* Genetic meta-analysis of diagnosed Alzheimer's disease identifies new risk loci and implicates A β , tau, immunity and lipid processing. *Nat. Genet.* **51**, 414–430 (2019).
7. Liu, J. Z., Erlich, Y. & Pickrell, J. K. Case-control association mapping by proxy using family history of disease. *Nat. Genet.* **49**, 325–331 (2017).
8. Ollier, W., Sprosen, T. & Peakman, T. UK Biobank: from concept to reality. *Pharmacogenomics* **6**, 639–646 (2005).
9. Marioni, R. E. *et al.* GWAS on family history of Alzheimer's disease. *Transl. Psychiatry* (2018). doi:10.1038/s41398-018-0150-6
10. Jansen, I. E. *et al.* Genome-wide meta-analysis identifies new loci and functional pathways influencing Alzheimer's disease risk. *Nat. Genet.* **51**, 404–413 (2019).
11. Seshadri, S. *et al.* Genome-wide analysis of genetic loci associated with Alzheimer disease. *JAMA - J. Am. Med. Assoc.* **303**, (2010).
12. Lambert, J. C. *et al.* Meta-analysis of 74,046 individuals identifies 11 new susceptibility loci for Alzheimer's disease. *Nat. Genet.* **45**, 1452–8 (2013).
13. Jonsson, T. *et al.* Variant of TREM2 associated with the risk of Alzheimer's disease. *N. Engl. J. Med.* **368**, 107–16 (2013).
14. Guerreiro, R. *et al.* TREM2 variants in Alzheimer's disease. *N. Engl. J. Med.* **368**, 117–27 (2013).
15. Jonsson, T. *et al.* A mutation in APP protects against Alzheimer's disease and age-related cognitive decline. *Nature* **488**, 96–9 (2012).
16. Sims, R. *et al.* Rare coding variants in PLCG2, ABI3, and TREM2 implicate microglial-mediated innate immunity in Alzheimer's disease. *Nat. Genet.* **49**, (2017).
17. Adams, P. M. *et al.* Assessment of the genetic variance of late-onset Alzheimer's disease. *Neurobiol. Aging* (2016). doi:10.1016/j.neurobiolaging.2016.02.024
18. Mullard, A. Microglia-targeted candidates push the Alzheimer drug envelope. *Nat. Rev. Drug Discov.* **17**, 303–305 (2018).
19. Moulder, K. L. *et al.* Dominantly Inherited Alzheimer Network: facilitating research and clinical trials. *Alzheimers. Res. Ther.* **5**, 48 (2013).
20. Reiman, E. M. *et al.* Alzheimer's Prevention Initiative: A Plan to Accelerate the Evaluation of Presymptomatic Treatments. *J. Alzheimer's Dis.* **26**, 321–329 (2011).

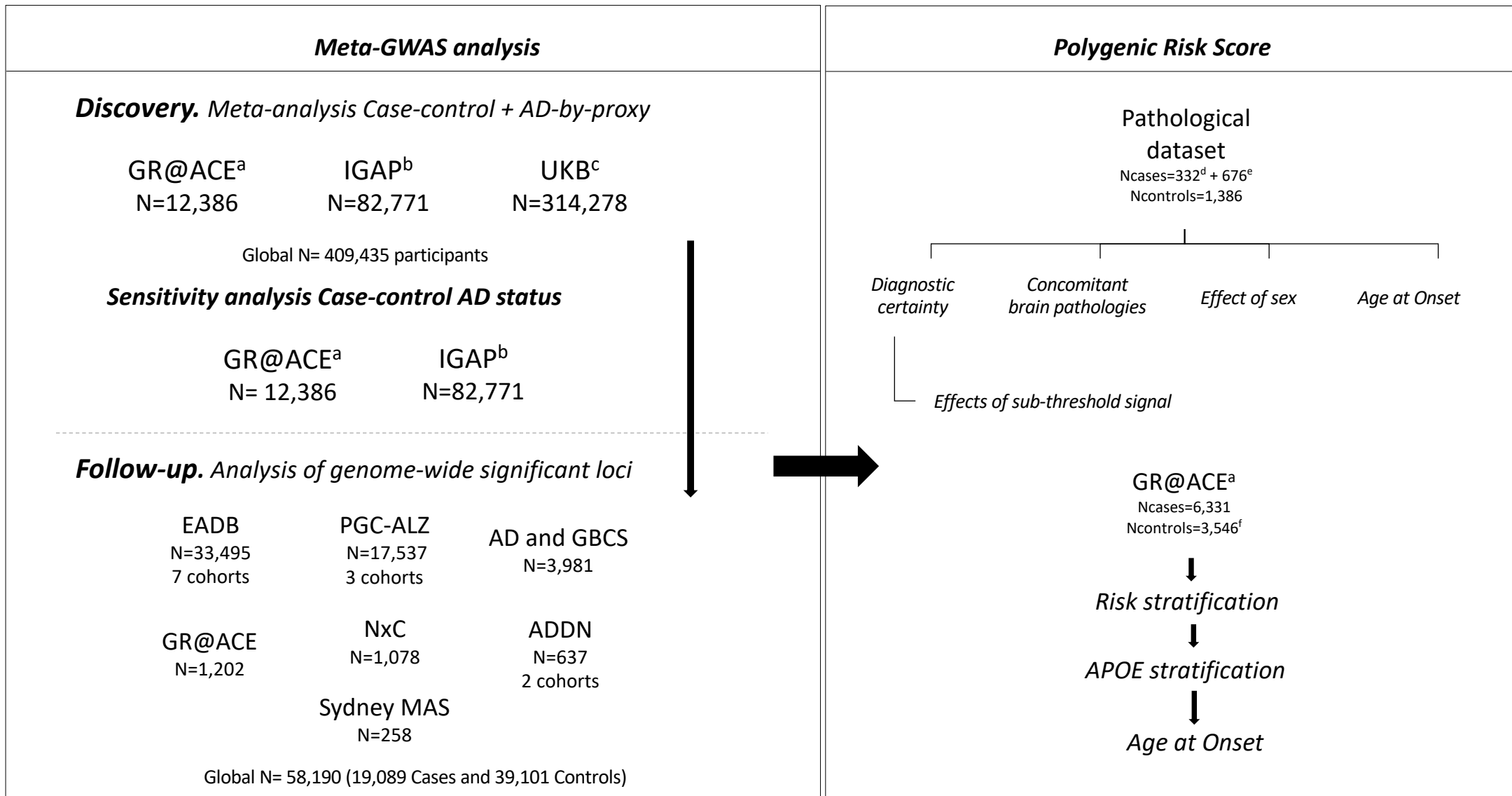
21. International Schizophrenia Consortium *et al.* Common polygenic variation contributes to risk of schizophrenia and bipolar disorder. *Nature* **460**, 748–52 (2009).
22. Rodríguez-Rodríguez, E. *et al.* Genetic risk score predicting accelerated progression from mild cognitive impairment to Alzheimer’s disease. *J. Neural Transm.* **120**, 807–812 (2013).
23. Adams, H. H. H. *et al.* Genetic risk of neurodegenerative diseases is associated with mild cognitive impairment and conversion to dementia. *Alzheimer’s Dement.* (2015). doi:10.1016/j.jalz.2014.12.008
24. Desikan, R. S. *et al.* Genetic assessment of age-associated Alzheimer disease risk: Development and validation of a polygenic hazard score. *PLoS Med.* (2017). doi:10.1371/journal.pmed.1002258
25. Lacour, A. *et al.* Genome-wide significant risk factors for Alzheimer’s disease: role in progression to dementia due to Alzheimer’s disease among subjects with mild cognitive impairment. *Mol. Psychiatry* **22**, 153–160 (2016).
26. Sleegers, K. *et al.* A 22-single nucleotide polymorphism Alzheimer’s disease risk score correlates with family history, onset age, and cerebrospinal fluid A β 42. *Alzheimer’s Dement.* **11**, 1452–1460 (2015).
27. van der Lee, S. J. *et al.* The effect of APOE and other common genetic variants on the onset of Alzheimer’s disease and dementia: a community-based cohort study. *Lancet Neurol.* (2018). doi:10.1016/S1474-4422(18)30053-X
28. Moreno-Grau, S. *et al.* Genome-wide association analysis of dementia and its clinical endophenotypes reveal novel loci associated with Alzheimer’s disease and three causality networks: The GR@ACE project. *Alzheimer’s Dement.* **0**, (2019).
29. Kunkle, B. W. *et al.* Genetic meta-analysis of diagnosed Alzheimer’s disease identifies new risk loci and implicates AmyloidBeta, tau, immunity and lipid processing. *Nat. Genet.* **51**, 414 (2019).
30. Ruiz, A. *et al.* Assessing the role of the TREM2 p.R47H variant as a risk factor for Alzheimer’s disease and frontotemporal dementia. *Neurobiol. Aging* **35**, 444.e1-444.e4 (2014).
31. McCarthy, S. *et al.* A reference panel of 64,976 haplotypes for genotype imputation. *Nat. Genet.* **48**, 1279–83 (2016).
32. 1000 Genomes Project Consortium *et al.* A global reference for human genetic variation. *Nature* **526**, 68–74 (2015).
33. Sudlow, C. *et al.* UK Biobank: An Open Access Resource for Identifying the Causes of a Wide Range of Complex Diseases of Middle and Old Age. *PLOS Med.* **12**, e1001779 (2015).
34. Lloyd-Jones, L. R., Robinson, M. R., Yang, J. & Visscher, P. M. Transformation of Summary Statistics from Linear Mixed Model Association on All-or-None Traits to Odds Ratio. *Genetics* **208**, 1397–1408 (2018).
35. Willer, C. J., Li, Y. & Abecasis, G. R. METAL: Fast and efficient meta-analysis of genomewide association scans. *Bioinformatics* (2010). doi:10.1093/bioinformatics/btq340
36. Jun, G. *et al.* Comprehensive search for Alzheimer disease susceptibility loci in the APOE region. *Arch. Neurol.* **69**, 1270–9 (2012).
37. Watanabe, K., Taskesen, E., van Bochoven, A. & Posthuma, D. Functional mapping and annotation of genetic associations with FUMA. *Nat. Commun.* (2017). doi:10.1038/s41467-017-01261-5
38. Jun, G. *et al.* A novel Alzheimer disease locus located near the gene encoding tau protein. *Mol. Psychiatry* **21**, 108–17 (2016).
39. Desikan, R. S. *et al.* Polygenic Overlap Between C-Reactive Protein, Plasma Lipids, and Alzheimer Disease. *Circulation* (2015). doi:10.1161/CIRCULATIONAHA.115.015489
40. Lonsdale, J. *et al.* The Genotype-Tissue Expression (GTEx) project. *Nat. Genet.* **45**, 580–585 (2013).
41. BrainSeq: A Human Brain Genomics Consortium. Electronic address: drweinberger@libd.org, C. R. *et al.* BrainSeq: Neurogenomics to Drive Novel Target Discovery for Neuropsychiatric Disorders. *Neuron* **88**, 1078–1083 (2015).
42. Myrum, C., Nikolaienko, O., Bramham, C. R., Haavik, J. & Zayats, T. Implication of the APP Gene in Intellectual Abilities. *J. Alzheimer’s Dis.* **59**, 723–735 (2017).
43. Hardy, J. A. & Higgins, G. A. Alzheimer’s disease: the amyloid cascade hypothesis. *Science* **256**, (1992).
44. Hardy, J. & Allsop, D. Amyloid deposition as the central event in the aetiology of Alzheimer’s disease. *Trends Pharmacol. Sci.* **12**, 383–8 (1991).
45. Cenini, G. *et al.* Wild type but not mutant APP is involved in protective adaptive responses against oxidants. *Amino Acids* **39**, 271–83 (2010).
46. Egan, M. F. *et al.* Randomized Trial of Verubecestat for Mild-to-Moderate Alzheimer’s Disease.

- N. Engl. J. Med.* **378**, 1691–1703 (2018).
47. Panza, F., Lozupone, M., Watling, M. & Imbimbo, B. Pietro. Do BACE inhibitor failures in Alzheimer patients challenge the amyloid hypothesis of the disease? *Expert Rev. Neurother.* **19**, 599–602 (2019).
 48. Hefter, D. & Draguhn, A. APP as a Protective Factor in Acute Neuronal Insults. *Front. Mol. Neurosci.* **10**, 22 (2017).
 49. Lancour, D. *et al.* One for all and all for One: Improving replication of genetic studies through network diffusion. *PLoS Genet.* **14**, e1007306 (2018).
 50. Asanomi, Y. *et al.* A rare functional variant of SHARPIN attenuates the inflammatory response and associates with increased risk of late-onset Alzheimer's disease. *Mol. Med.* **25**, 20 (2019).
 51. Seymour, R. E. *et al.* Spontaneous mutations in the mouse Sharpin gene result in multiorgan inflammation, immune system dysregulation and dermatitis. *Genes Immun.* **8**, 416–21 (2007).
 52. Astle, W. J. *et al.* The Allelic Landscape of Human Blood Cell Trait Variation and Links to Common Complex Disease. *Cell* **167**, 1415-1429.e19 (2016).
 53. Liu, Y. *et al.* Oncogenic Protein Kinase D3 Regulating Networks in Invasive Breast Cancer. *Int. J. Biol. Sci.* **13**, 748–758 (2017).
 54. Sieb, J. P., Kraner, S., Rauch, M. & Steinlein, O. K. Immature end-plates and utrophin deficiency in congenital myasthenic syndrome caused by epsilon-AChR subunit truncating mutations. *Hum. Genet.* **107**, 160–4 (2000).
 55. Nogajski, J. H., Kiernan, M. C., Ouvrier, R. A. & Andrews, P. I. Congenital myasthenic syndromes. *J. Clin. Neurosci.* **16**, 1–11 (2009).
 56. Magno, L. *et al.* Alzheimer's disease phospholipase C-gamma-2 (PLCG2) protective variant is a functional hypermorph. *Alzheimers. Res. Ther.* **11**, 16 (2019).
 57. Lin, H. *et al.* Discovery of a cytokine and its receptor by functional screening of the extracellular proteome. *Science* **320**, 807–11 (2008).
 58. Walker, D. G., Tang, T. M. & Lue, L.-F. Studies on Colony Stimulating Factor Receptor-1 and Ligands Colony Stimulating Factor-1 and Interleukin-34 in Alzheimer's Disease Brains and Human Microglia. *Front. Aging Neurosci.* **9**, 244 (2017).
 59. Mizuno, T. *et al.* Interleukin-34 selectively enhances the neuroprotective effects of microglia to attenuate oligomeric amyloid- β neurotoxicity. *Am. J. Pathol.* (2011). doi:10.1016/j.ajpath.2011.06.011
 60. Luo, J. *et al.* Colony-stimulating factor 1 receptor (CSF1R) signaling in injured neurons facilitates protection and survival. *J. Exp. Med.* **210**, 157–72 (2013).
 61. Chouraki, V. *et al.* Evaluation of a Genetic Risk Score to Improve Risk Prediction for Alzheimer's Disease. *J. Alzheimer's Dis.* **53**, 921–932 (2016).
 62. Escott-Price, V. *et al.* Common polygenic variation enhances risk prediction for Alzheimer's disease. *Brain* **138**, 3673–84 (2015).
 63. Jack, C. R. *et al.* Tracking pathophysiological processes in Alzheimer's disease: an updated hypothetical model of dynamic biomarkers. *Lancet. Neurol.* **12**, 207–16 (2013).
 64. Cuyvers, E. & Sleegers, K. Genetic variations underlying Alzheimer's disease: Evidence from genome-wide association studies and beyond. *The Lancet Neurology* (2016). doi:10.1016/S1474-4422(16)00127-7

Common variants in Alzheimer’s disease: Novel association of six genetic variants with AD and risk stratification by polygenic risk scores

Figures

<i>Figure 1.</i> Flow chart of analysis steps	2
<i>Figure 2.</i> Manhattan plot of overall meta-analysis for genome-wide association in Alzheimer’s disease .	3
<i>Figure 3.</i> Clinical impact of a Polygenic Risk Score for Alzheimer’s Disease.....	4
<i>Figure 4.</i> Risk of Alzheimer’s disease stratified by Polygenic Risk Score, <i>APOE</i> genotypes, and age at onset stratified by both	5
<i>Figure 5.</i> Landscape for Alzheimer's Disease over the last years	6



^a Extended dataset (S.Moreno-Grau et al. 2019)

^b Stages 1 + 2 (Kunkle et al. 2019)

^c By proxy AD: Meta-analysis of maternal and paternal history of dementia (Marioni et al. 2018)

^d Pathologically confirmed AD cases

^e AD cases diagnosed based on clinical criteria

^f Controls participants aged 55 years and younger

Figure 1: Flow chart of analysis steps. Discovery meta-analysis in GR@ACE, IGAP stage 1+2 and UKBiobank followed by a replication in 16 independent cohorts. The genome-wide significant signals found in meta-GWAS were used to perform a Polygenic Risk Score in a clinical and pathological AD dataset. N = total of individuals within specified data set.

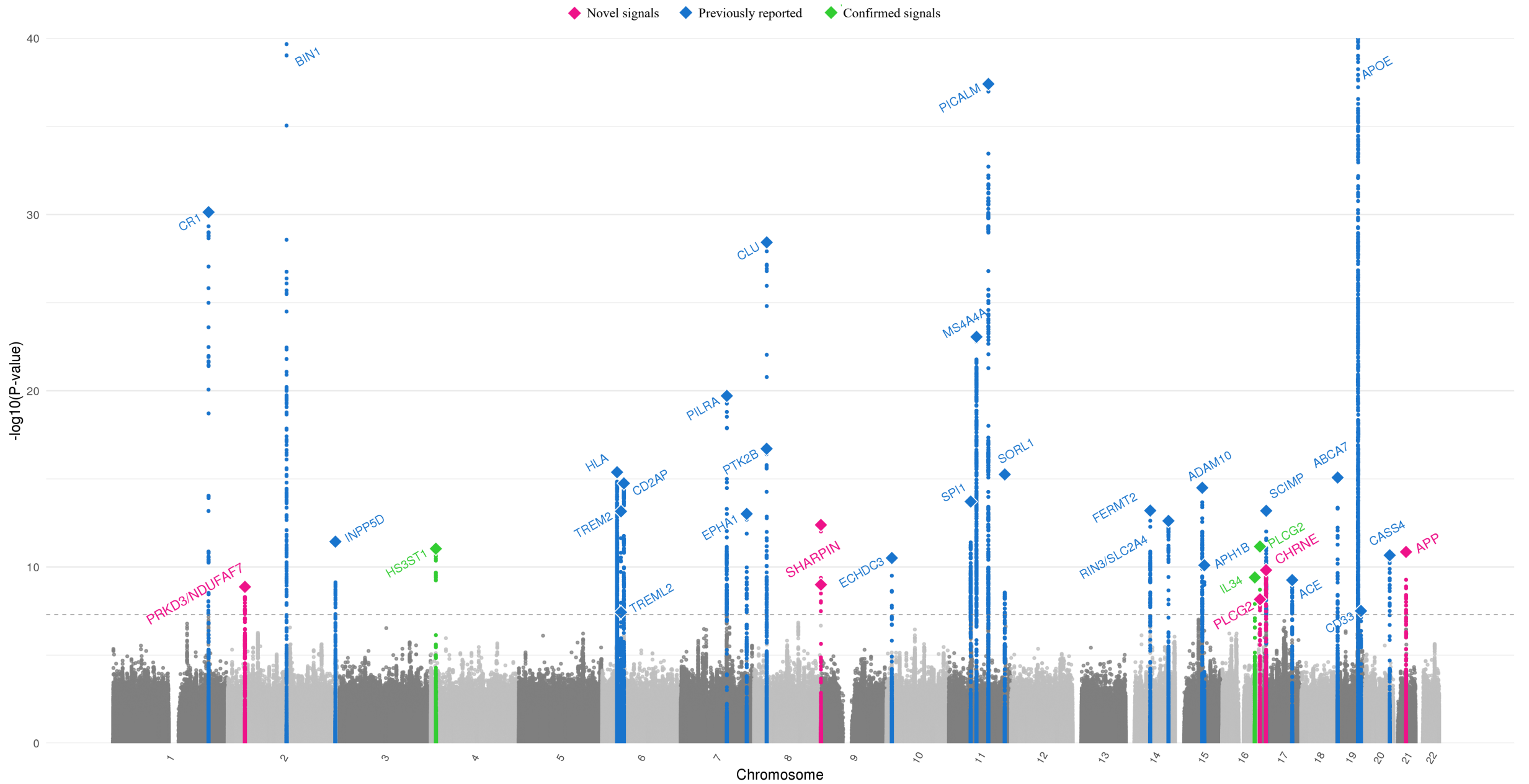


Figure 2: Manhattan plot of overall meta-analysis for genome-wide association in Alzheimer's disease.

medRxiv preprint doi: <https://doi.org/10.1101/19012021>; this version posted January 17, 2020. The copyright holder for this preprint (which was not certified by peer review) is the author/funder, who has granted medRxiv a license to display the preprint in perpetuity. It is made available under a [CC-BY-NC-ND 4.0 International license](https://creativecommons.org/licenses/by-nc-nd/4.0/).

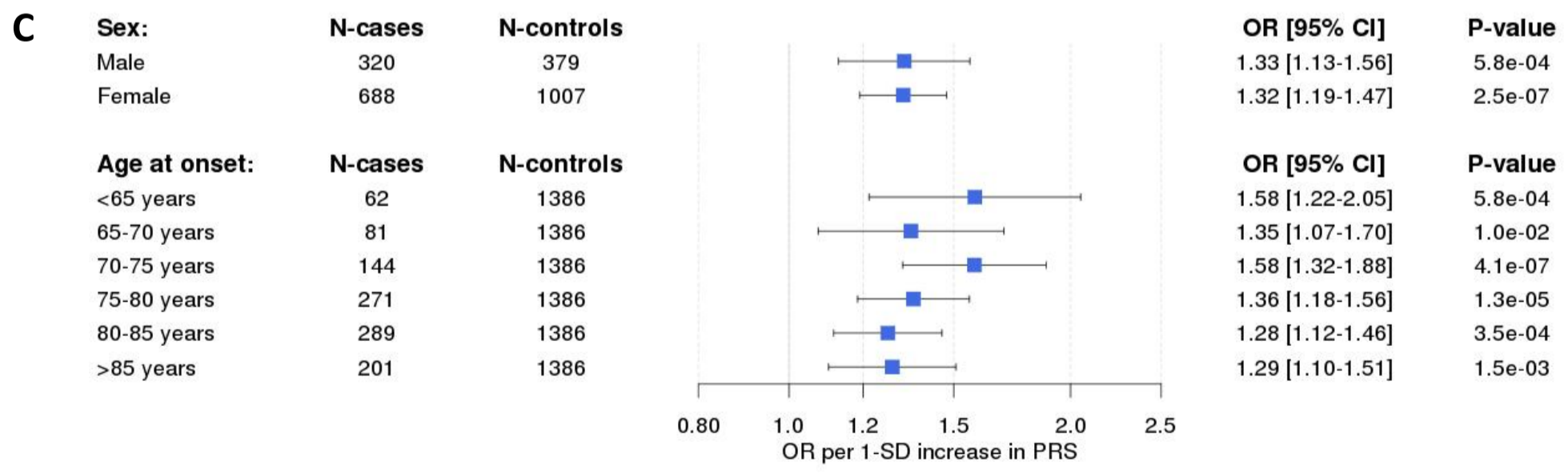
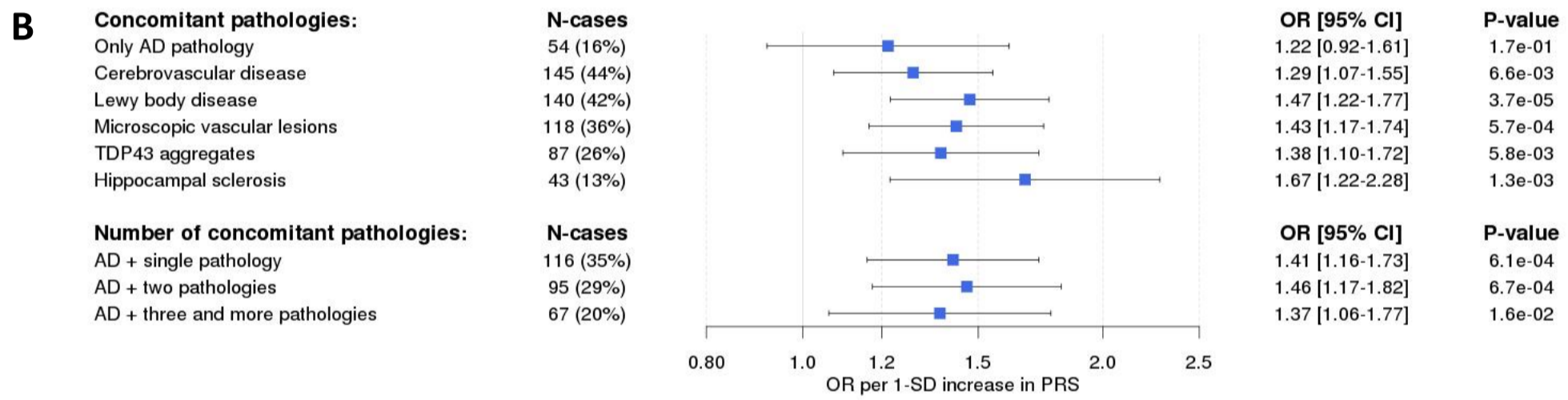
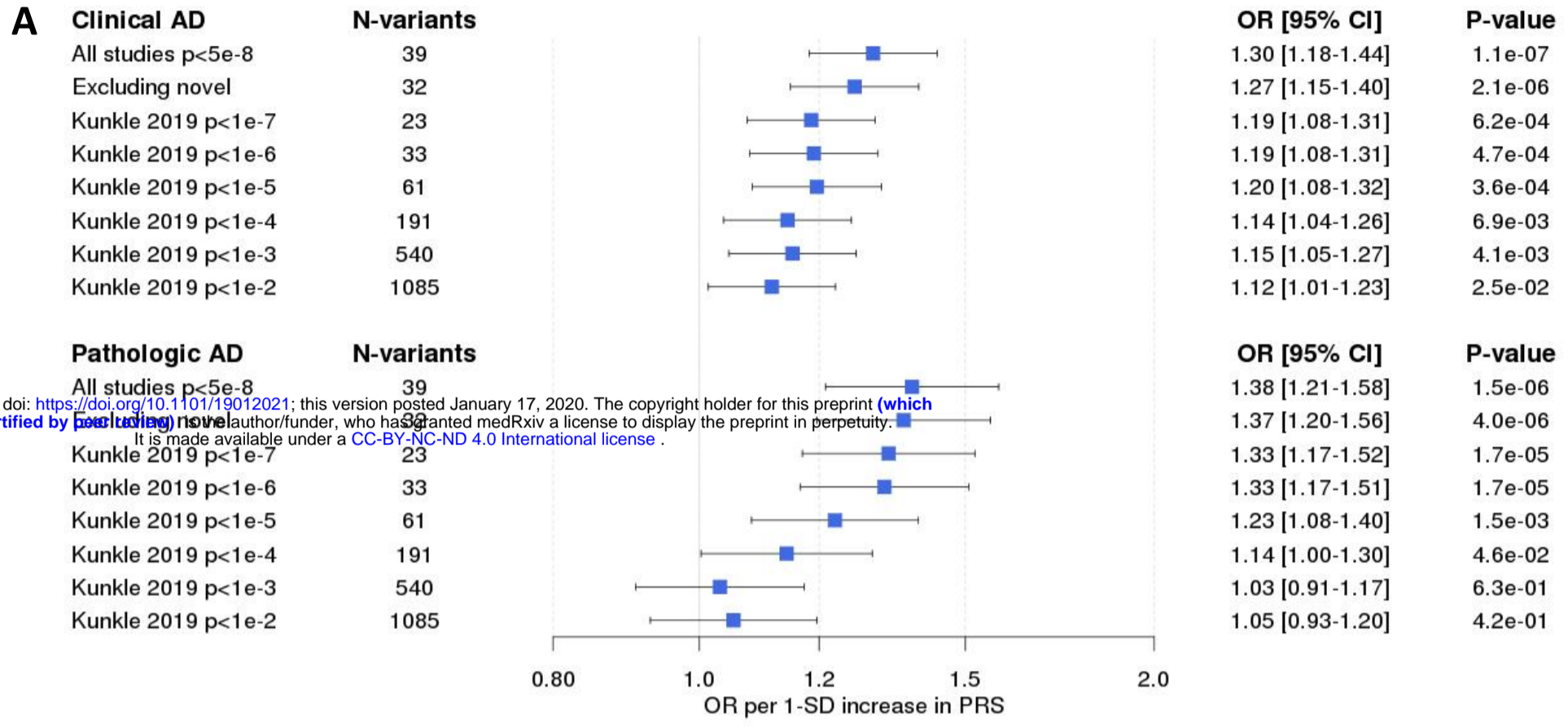
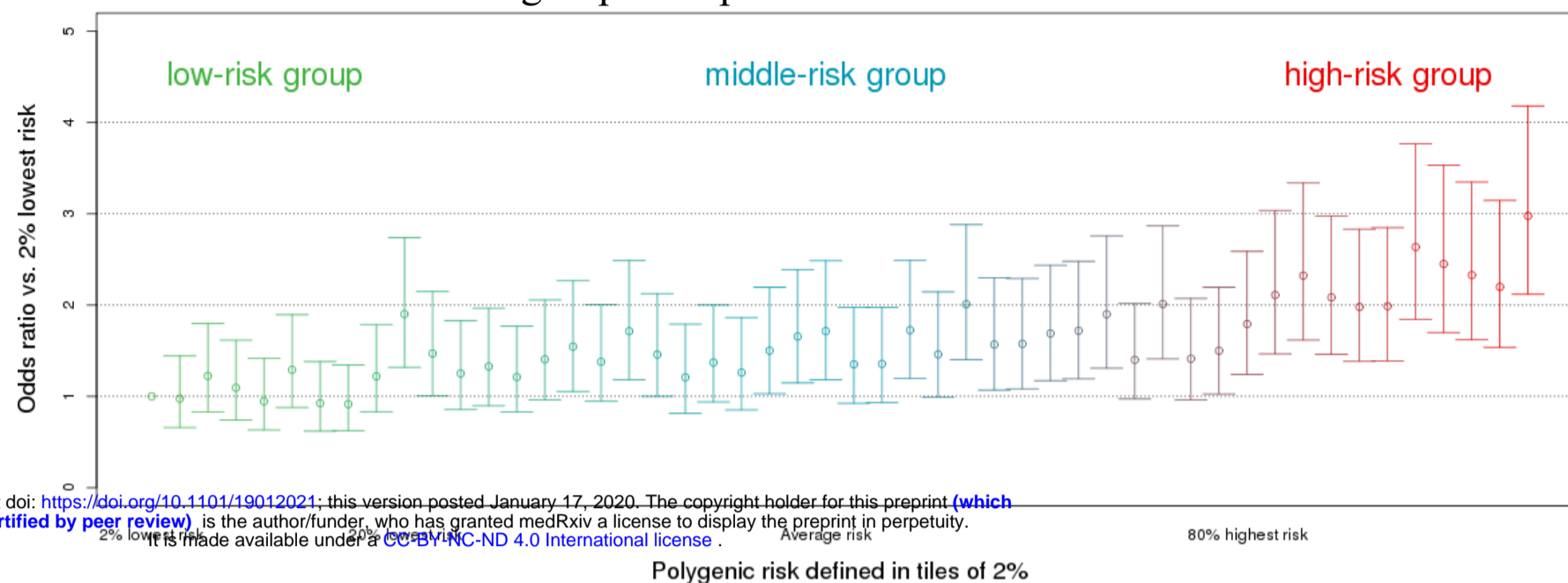


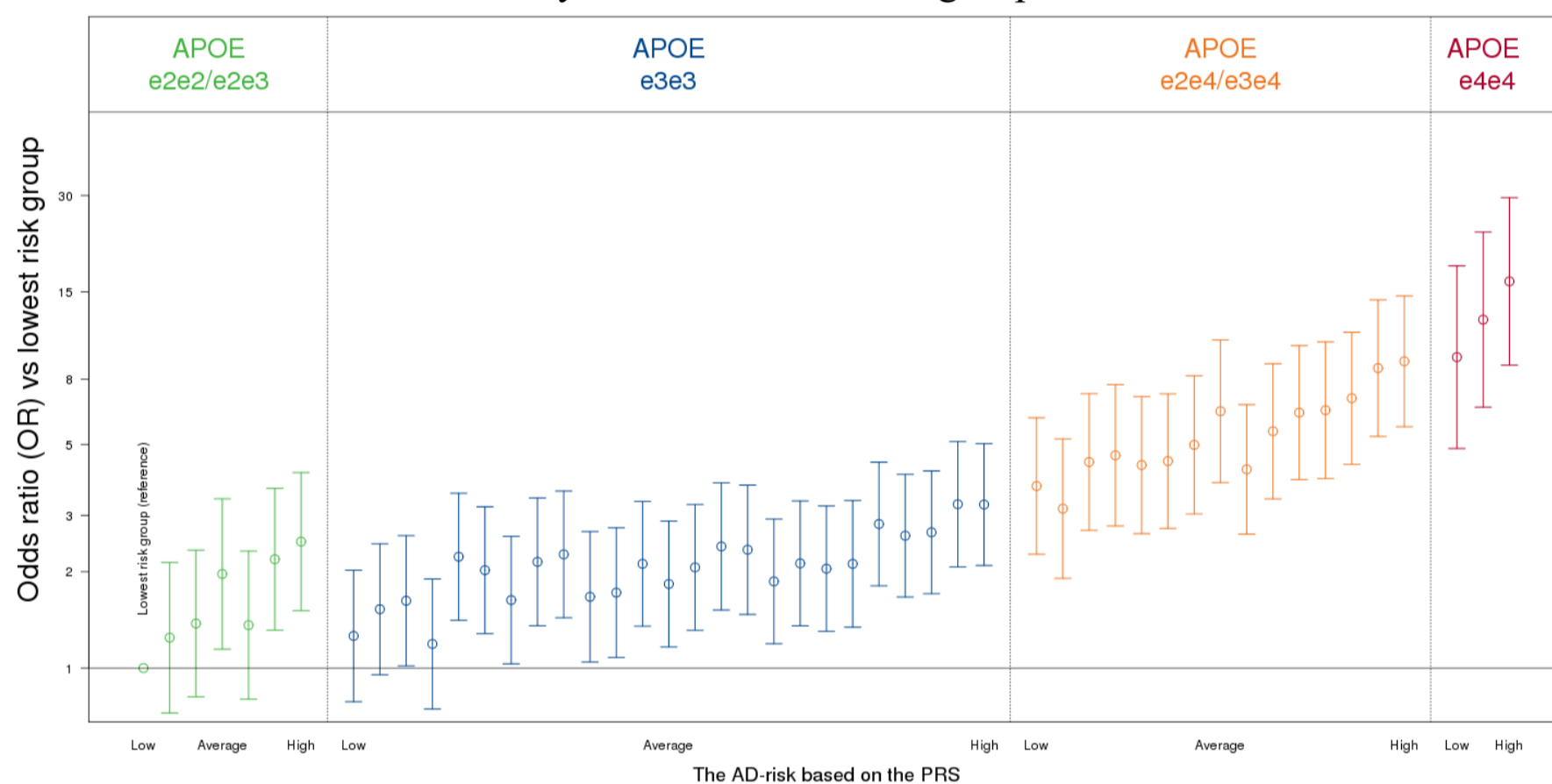
Figure 3: Clinical impact of a Polygenic Risk Score for Alzheimer's Disease

A. The AD risk of PRS groups compared to those with the 2% lowest risk



medRxiv preprint doi: <https://doi.org/10.1101/19012021>; this version posted January 17, 2020. The copyright holder for this preprint (which was not certified by peer review) is the author/funder, who has granted medRxiv a license to display the preprint in perpetuity. It is made available under aCC-BY-NC-ND 4.0 International license.

B. The AD risk stratified by PRS and *APOE* risk groups



C. The age at onset of AD stratified by PRS and *APOE* risk groups

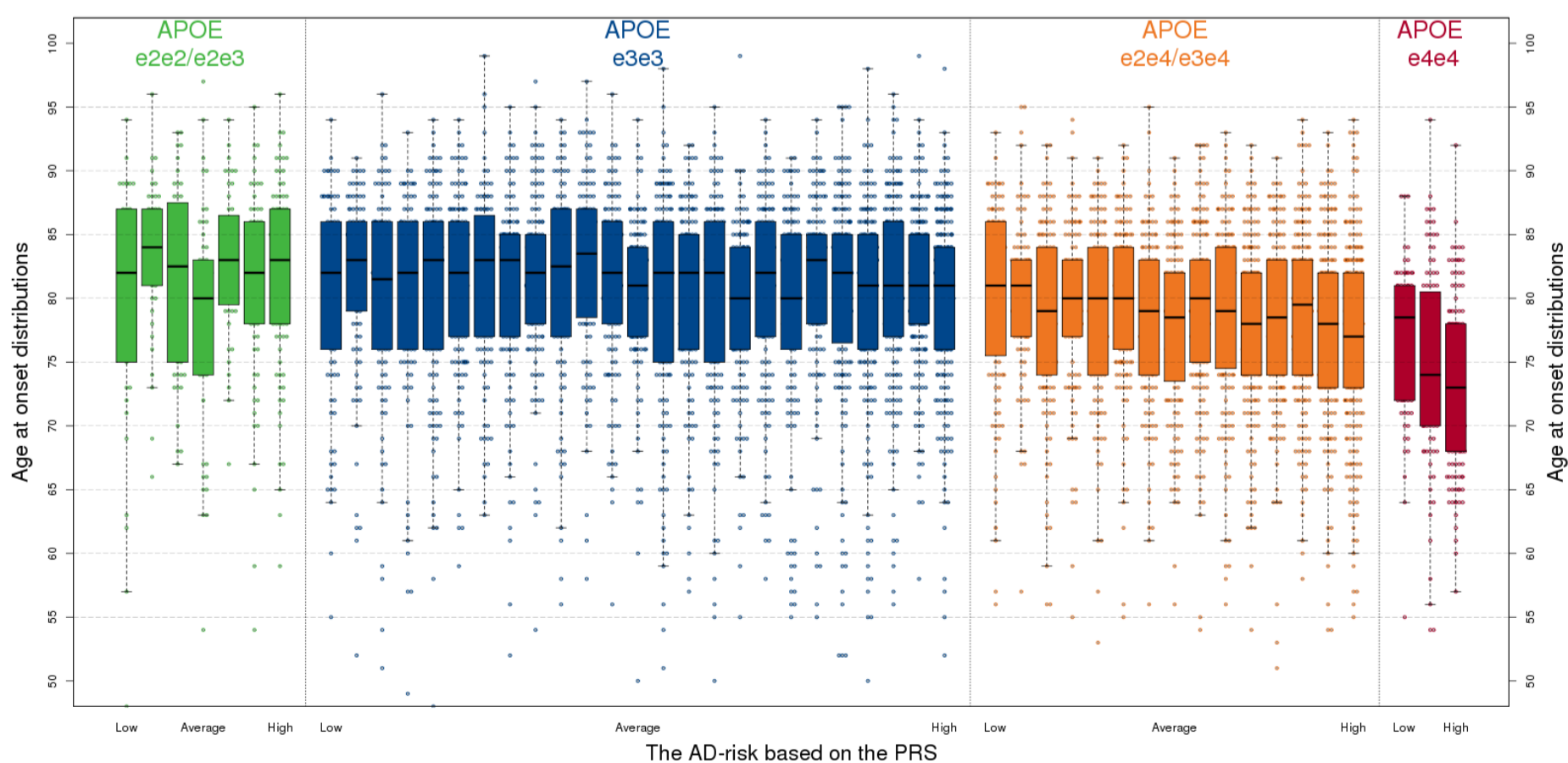


Figure 4: Risk of Alzheimer's disease stratified by Polygenic Risk Score, *APOE* genotypes, and age at onset stratified by both.

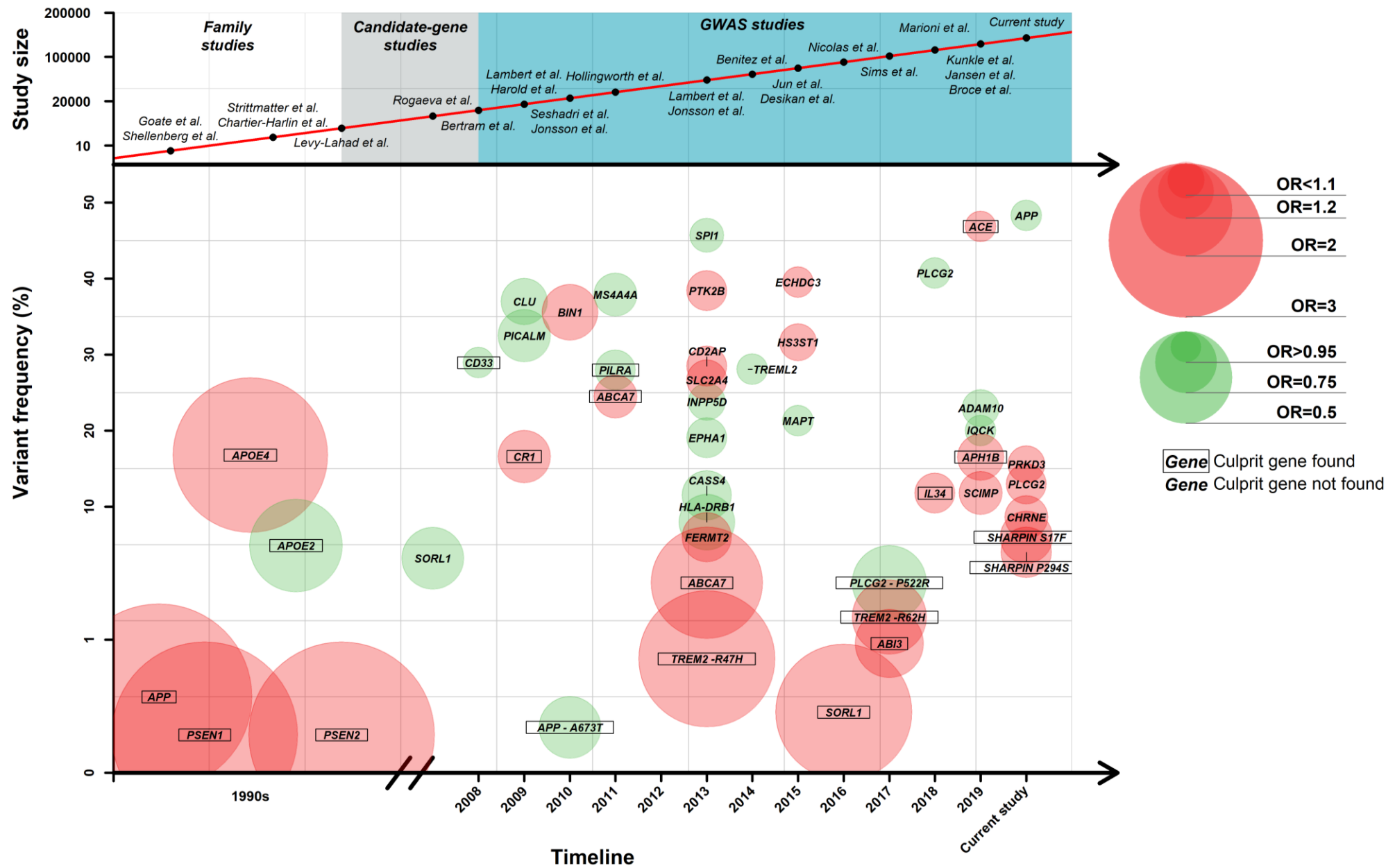


Figure 5. Landscape for Alzheimer's Disease over the last years. GWAS= Genome-Wide Association Study; OR=Odds Ratio

Table 1. Results for the AD loci selected for follow-up

Note: *FreqA1* is from GR@ACE discovery dataset. *P*-value for significance < 5×10^{-8} . Effect allele: Allele 1.

Chr	Closest gene	SNP	BP	Discovery meta-analysis					Follow-up datasets		Overall	
				Allele 1	Allele 2	FreqA1	OR[CI95%]	P	OR[CI95%]	P	OR[CI95%]	P
Variants showing novel genome-wide significant association with AD												
2	<i>PRKD3/NDUFAF7</i>	rs876461	37515958	A	G	0.143	1.07[1.04-1.09]	9.14E-07	1.08[1.04-1.13]	3.07E-04	1.07[1.05-1.09]	1.34E-09
8	<i>SHARPIN</i>	rs34674752	145154222	A	G	0.052	1.11[1.06-1.16]	4.02E-06	1.20[1.10-1.31]	1.65E-05	1.13[1.09-1.18]	1.00E-09
8	<i>SHARPIN</i>	rs34173062	145158607	A	G	0.085	1.16[1.11-1.21]	1.33E-11	1.09[1.02-1.17]	7.35E-03	1.14[1.10-1.18]	9.62E-13
16	<i>PLCG2</i>	rs3935877	81900853	C	T	0.868	0.92[0.90-0.95]	1.12E-07	0.92[0.85-0.99]	1.96E-02	0.92[0.90-0.95]	6.85E-09
17	<i>CHRNE</i>	rs72835061	4805437	A	C	0.085	1.09[1.06-1.12]	3.92E-09	1.07[1.02-1.12]	7.83E-03	1.09[1.06-1.11]	1.51E-10
21	<i>APP</i>	rs2154481	27473875	C	T	0.483	0.95[0.93-0.96]	9.26E-10	0.96[0.93-0.99]	3.31E-03	0.95[0.94-0.96]	1.39E-11
Previously reported genome-wide significant hits replicating in the follow-up												
4	<i>HS3ST1</i>	rs4351014	11027619	C	T	0.684	0.94[0.92-0.96]	5.37E-10	0.93[0.88-0.98]	4.54E-03	0.94[0.92-0.95]	9.16E-12
16	<i>IL34</i>	rs4985556	70694000	A	C	0.111	1.08[1.05-1.11]	2.28E-08	1.09[1.03-1.16]	4.59E-03	1.08[1.06-1.11]	3.91E-10
16	<i>PLCG2</i>	rs12444183	81773209	A	G	0.407	0.95[0.93-0.97]	1.48E-08	0.92[0.88-0.96]	3.23E-05	0.95[0.93-0.96]	6.81E-12
Suggestive signals (not replicating)												
14	<i>ELK2AP</i>	rs7153315	106195719	C	G	0.750	0.94[0.92-0.96]	9.80E-08	1.16[1.01-1.33]	0.0412	0.94[0.92-0.97]	9.04E-07
15	<i>SPPL2A</i>	rs76523702	51002342	C	T	0.802	1.06[1.04-1.08]	6.86E-08	1.02[0.97-1.07]	0.3501	1.05[1.03-1.08]	1.08E-07

Table 2. The genetic landscape of late-onset Alzheimer's Disease

Note: Association results of overall meta-GWAS cohorts. OR: effect allele A1. Allelic Freq. is from A1 in GR@ACE discovery dataset. LOF: Loss-of-function.

RS	Chr	BP	A1/A2	Minor allele	MAF	Effect (Minor Allele)	OR[C195%]	P-value	Top SNP found in	Locus priority	Region included in validation	Closet Gene	Culprit variant identified	Culprit Gene	Other Mutations observed	Certainty culprit gene	Hit pleiotropy
rs4844610	1	207802552	A/C	A	0.166	Risk	1.14[1.11-1.16]	7.30E-31	Kunkle et al. 2019	Lambert et al. 2009	No	CR1	CNV(linked to hit)	CR1	no	clear	no
rs876461	2	37515958	A/G	A	0.143	Risk	1.07[1.05-1.09]	1.34E-09	Present work	Present work	Yes	PRKD3/NDUFAF7	no	PRKD3/NDUFAF7	no	possible	no
rs6733839	2	127892810	C/T	T	0.356	Risk	0.84[0.83-0.86]	6.43E-77	Lambert et al. 2013	Seshadri et al. 2010	No	BIN1	no	BIN1	missense variant	clear	no
rs10933431	2	233981912	C/G	G	0.238	Protective	1.08[1.06-1.10]	3.64E-12	Kunkle et al. 2019	Lambert et al. 2013	No	INPP5D	no	INPP5D	no	likely	no
rs4351014	4	11027619	C/T	T	0.316	Risk	0.94[0.92-0.95]	9.16E-12	Present work	Desikan et al. 2015	Yes	HS3ST1	no	HS3ST1	no	possible	no
rs9275152	6	32652196	C/T	C	0.068	Protective	0.88[0.85-0.91]	4.17E-16	Present work	Lambert et al. 2013	No	HLA	no	HLA-DRB1	no	unclear	no
rs143332484	6	41129207	C/T	T	0.016	Risk	0.93[0.74-1.16]	5.19E-01	Sims et al. 2017	Sims et al. 2017	No	TREM2	Missense Arg62His	TREM2	missense, nonsense variants	clear	no
rs75932628	6	41129252	C/T	T	0.003	Risk	0.50[0.41-0.60]	6.95E-14	Jonson et al. 2013	Jonson et al. 2013	No	TREM2	Missense Arg47His	TREM2	missense, nonsense variants	clear	no
rs9381040	6	41154650	C/T	T	0.281	Protective	1.05[1.03-1.07]	3.72E-08	Present work	Benitez et al. 2014	No	TREML2	no	TREML2	no	likely	no
rs9381564	6	47443806	A/G	G	0.278	Risk	0.93[0.91-0.94]	1.79E-15	Present work	Lambert et al. 2013	No	CD2AP	no	CD2AP	missense variant	likely	no
rs1859788	7	99971834	A/G	A	0.277	Protective	0.92[0.90-0.93]	1.94E-20	Rathore et al. 2018	Hollinworth et al. 2011	No	PILRA	Missense Gly78Arg	PILRA	no	clear	no
rs56402156	7	143103481	A/G	A	0.191	Protective	0.92[0.90-0.94]	9.63E-14	Marioni et al. 2018	Lambert et al. 2013	No	EPHA1	no	EPHA1	missense variant	likely	no
rs73223431	8	27219987	C/T	T	0.384	Risk	0.93[0.91-0.94]	1.94E-17	Kunkle et al. 2019	Lambert et al. 2013	No	PTK2B	no	PTK2B	no	likely	no
rs9331896	8	27467686	C/T	C	0.365	Protective	0.90[0.89-0.92]	3.77E-29	Lambert et al. 2013	Harold et al. 2009	No	CLU	no	CLU	no	likely	no
rs34674752	8	145154222	A/G	A	0.052	Risk	1.13[1.09-1.18]	1.00E-09	Present work	Lancour et al. 2018	yes	SHARPIN	Missense Pro294Ser	SHARPIN	missense variant	clear	Blood cell counts
rs34173062	8	145158607	A/G	A	0.085	Risk	1.14[1.10-1.18]	9.62E-13	Present work	Lancour et al. 2018	Yes	SHARPIN	Missense Ser17Phe	SHARPIN	missense variant	clear	Blood cell counts
rs7920721	10	11720308	A/G	G	0.396	Risk	0.94[0.93-0.96]	3.09E-11	Desikan et al. 2015	Desikan et al. 2015	No	ECHDC3	no	ECHDC3	no	unclear	C-reactive protein
rs3740688	11	47380340	T/G	G	0.457	Protective	1.07[1.05-1.09]	1.93E-14	Marioni et al. 2018	Huang et al. 2015	No	SPI1	no	SPI1	no	clear	no
rs1582763	11	60021948	A/G	A	0.379	Protective	0.91[0.90-0.93]	8.69E-24	Jun et al. 2015	Hollinworth et al. 2011	No	MS4A4A	no	MS4A4A	no	likely	C-reactive protein, TREM2 expression
rs3851179	11	85868640	C/T	T	0.332	Protective	1.12[1.10-1.14]	3.87E-38	Harold et al. 2009	Harold et al. 2009	No	PICALM	no	PICALM	no	clear	no
rs11218343	11	121435587	C/T	C	0.033	Protective	0.83[0.79-0.87]	5.59E-16	Miyashita et al. 2013	Rogaeva et al. 2007	No	SORL1	no	SORL1	missense variant (incomplete penetrance), LOF variants	clear	Triglycerides levels
rs17125924	14	53391680	A/G	G	0.063	Risk	0.89[0.87-0.92]	6.30E-14	Marioni et al. 2018	Lambert et al. 2013	No	FERMT2	no	FERMT2	no	likely	no
rs11623019	14	92936971	C/T	T	0.267	Risk	0.93[0.91-0.94]	2.41E-13	Present work	Lambert et al. 2013	No	RIN3/SLC24A4	no	RIN3/SLC24A4	no	unclear	no
rs593742	15	59045774	A/G	G	0.228	Protective	1.08[1.06-1.10]	3.20E-15	Marioni et al. 2018	Kim et al. 2009	No	ADAM10	no	ADAM10	missense variant (incomplete penetrance)	likely	no
rs117618017	15	63569902	C/T	T	0.165	Risk	0.91[0.89-0.94]	7.98E-11	Jansen et al. 2019	Poli et al. 2008	No	APH1B	Missense Thr27Ile	APH1B	no	likely	no
rs7185636	16	19808163	C/T	C	0.202	Protective	0.95[0.93-0.97]	2.30E-05	Kunkle et al. 2019	Kunkle et al. 2019	No	IQCK	no	IQCK, KNOP1	yes	likely	no
rs4985556	16	70694000	A/C	A	0.111	Risk	1.08[1.06-1.11]	3.91E-10	Marioni et al. 2018	Marioni et al. 2018	Yes	IL34	Stop Gained Tyr213Ter	IL34	no	clear	no
rs12444183	16	81773209	A/G	A	0.407	Protective	0.95[0.93-0.96]	6.87E-12	Marioni et al. 2018	Sims et al. 2017	Yes	PLCG2	no	PLCG2	rare variant Pro522Leu	likely	no
rs3935877	16	81900853	C/T	T	0.132	Risk	0.92[0.90-0.95]	6.85E-09	Present work	Sims et al. 2017	yes	PLCG2	no	PLCG2	rare variant Pro522Leu	likely	no
rs72824905	16	81942028	C/G	G	0.005	Protective	1.38[1.16-1.65]	3.48E-04	Sims et al. 2017	Sims et al. 2017	yes	PLCG2	Missense Pro522Leu	PLCG2	no	clear	no
rs75511804	17	5138904	C/T	T	0.118	Risk	0.92[0.90-0.94]	6.46E-14	Present work	Jansen et al. 2019	No	SCIMP	no	SCIMP	no	possible	no
rs2732703	17	46290850	T/G	G	0.236	Protective	1.05[1.03-1.08]	1.08E-04	Present work	Jun et al. 2015	No	MAPT/KANSL1	no	KANSL1, MAPT	no	likely	APOE e4 negative and APOE e4 positive specific risks
rs4311	17	61560763	C/T	C	0.469	Risk	1.06[1.04-1.08]	5.51E-10	Marioni et al. 2018	Alvarez et al. 1999	No	ACE	Intornic ALLU insertion	ACE	no	clear	Intracerebral hemorrhage occurrence in CAA
rs72835061	17	4805437	A/C	A	0.085	Risk	1.09[1.06-1.11]	1.51E-10	Present work	Present work	yes	CHRNE/C17orf107	no	CHRNE	no	possible	no
rs616338	17	47297297	C/T	T	0.008	Risk	0.79[0.70-0.88]	3.22E-05	Sims et al. 2017	Sims et al. 2017	no	ABI3	Missense Ser209Phe	ABI3	no	clear	no
rs3752231	19	1043638	C/T	T	0.260	Risk	0.92[0.90-0.94]	8.42E-16	Marioni et al. 2018	Hollinworth et al. 2011	No	ABCA7	Intronic VNTR	ABCA7	rare variants (incomplete penetrance), LOF variants	likely	no
rs429358	19	45411941	C/T	C	0.168	Risk	3.00[2.93-3.07]	0.00E+00	Strittmatter et al. 1993	Strittmatter et al. 1993	No	APOE4	Arg112-Arg158 diplotype	APOE	no	clear	c-reactive protein, lipids, plateletcrit, blood proteins levels...
rs7412	19	45412079	C/T	T	0.049	Protective	1.58[1.52-1.65]	3.20E-123	Chartier-Harlin et al. 1994	Chartier-Harlin et al. 1994	No	APOE2	Cys112-Cys158 diplotype	APOE	no	clear	Lipid levels, Blood pressure, Blood protein levels.
rs12459419	19	51728477	C/T	T	0.290	Protective	1.06[1.04-1.08]	3.11E-08	Mailik et al. 2013	Bertram et al. 2008	No	CD33	Exon 2 splicing modulator	CD33	no	clear	Blood protein levels, plateletcrit
rs6024870	20	54997568	A/G	A	0.103	Protective	0.90[0.87-0.93]	2.16E-11	Present work	Lambert et al. 2013	No	CASS4	no	CASS4/CSFT1	no	unclear	no
rs2154481	21	27473875	C/T	C	0.483	Protective	0.95[0.94-0.96]	1.39E-11	Present work	Goate et al. 1991	Yes	APP	no	APP	EQAD full penetrance mutations	likely	no