

1                   Efficient Prediction of Vitamin B Deficiencies via  
2    Machine-learning Using Routine Blood Test Results in Patients  
3                   With Intense Psychiatric Episode

4  
5   Hidetaka Tamune<sup>1)2)3)5)\*</sup>, Jumpei Ukita<sup>3)4)5)</sup>, Yu Hamamoto<sup>1)2)</sup>, Hiroko Tanaka<sup>1)2)</sup>, Kenji  
6   Narushima<sup>1)</sup>, Naoki Yamamoto<sup>1)</sup>

7   1) Department of Neuropsychiatry, Tokyo Metropolitan Tama Medical Center, Tokyo,  
8   Japan

9   2) Department of Neuropsychiatry, Graduate School of Medicine, The University of  
10   Tokyo, Tokyo, Japan

11   3) Mental Health Research Course, Faculty of Medicine, The University of Tokyo,  
12   Tokyo, Japan

13   4) Department of Physiology, Graduate School of Medicine, The University of Tokyo,  
14   Tokyo, Japan

15   5) H. Tamune and JU contributed equally to this work

16

17   \* Correspondence:

18   Dr. Hidetaka Tamune, tamune-ky@umin.ac.jp

19

20   Abstract: 339 words (within 350 words)

21   Main text: 2660 words + 4 Tables + 5 Figures + 27 references

22   Keywords: Machine Learning; Random Forest Classifier; Vitamin B Deficiency; Folic  
23   Acid; Early Diagnosis; Decision support techniques or decision making.

24

25 **Abstract**

26 **Background:** Vitamin B deficiency is common worldwide and may lead to psychiatric  
27 symptoms; however, vitamin B deficiency epidemiology in patients with intense  
28 psychiatric episode has rarely been examined. Moreover, vitamin deficiency testing is  
29 costly and time-consuming, which has hampered effectively ruling out vitamin  
30 deficiency-induced intense psychiatric symptoms. In this study, we aimed to clarify the  
31 epidemiology of these deficiencies and efficiently predict them using machine-learning  
32 models from patient characteristics and routine blood test results that can be obtained  
33 within one hour.

34 **Methods:** We reviewed 497 consecutive patients deemed to be at imminent risk of  
35 seriously harming themselves or others over 2 years in a single psychiatric tertiary-care  
36 center. Machine-learning models (k-nearest neighbors, logistic regression, support  
37 vector machine, and random forest) were trained to predict each deficiency from age,  
38 sex, and 29 routine blood test results gathered in the period from September 2015 to  
39 December 2016. The models were validated using a dataset collected from January  
40 2017 through August 2017.

41 **Results:** We found that 112 (22.5%), 80 (16.1%), and 72 (14.5%) patients had vitamin  
42 B<sub>1</sub>, vitamin B<sub>12</sub>, and folate (vitamin B<sub>9</sub>) deficiency, respectively. Further, the  
43 machine-learning models were well generalized to predict deficiency in the future  
44 unseen data, especially using random forest; areas under the receiver operating  
45 characteristic curves for the validation dataset (i.e. the dataset not used for training the  
46 models) were 0.716, 0.599, and 0.796, respectively. The Gini importance of these  
47 vitamins provided further evidence of a relationship between these vitamins and the  
48 complete blood count, while also indicating a hitherto rarely considered, potential  
49 association between these vitamins and alkaline phosphatase (ALP) or thyroid  
50 stimulating hormone (TSH).

51 **Discussion:** This study demonstrates that machine-learning can efficiently predict some  
52 vitamin deficiencies in patients with active psychiatric symptoms, based on the largest  
53 cohort to date with intense psychiatric episode. The prediction method may expedite  
54 risk stratification and clinical decision-making regarding whether replacement therapy  
55 should be prescribed. Further research includes validating its external generalizability in  
56 other clinical situations and clarify whether interventions based on this method could  
57 improve patient care and cost-effectiveness.  
58

## 59 **1. Introduction**

60 Vitamin B deficiency is common worldwide and may lead to psychiatric  
61 symptoms<sup>1-4</sup>. For example, meta-analyses have shown that patients with schizophrenia  
62 or first-episode psychosis have lower folate (vitamin B<sub>9</sub>) levels than their healthy  
63 counterparts<sup>4,5</sup>. Moreover, vitamin therapy can effectively alleviate symptoms in a  
64 subgroup of patients with schizophrenia<sup>3,6-8</sup>. However, the epidemiology of vitamin B  
65 deficiency in patients with active mental symptoms requiring immediate hospitalization  
66 has rarely been examined.

67 In a psychiatric emergency, psychiatrists should promptly distinguish treatable  
68 patients with altered mental status due to a physical disease from patients with an  
69 authentic mental disorder (international statistical classification of diseases and related  
70 health problems-10, ICD-10 code: F2-9). However, vitamin deficiency testing is very  
71 costly (around 60 dollars for each measurement of vitamin B<sub>1</sub> (vitB<sub>1</sub>), vitamin B<sub>12</sub>  
72 (vitB<sub>12</sub>), or folate in the U.S.; 15–25 dollars for each test in Japan) and usually requires  
73 at least two days. Therefore, an efficient, cost-effective method of predicting vitamin B  
74 deficiency is needed.

75 Although several studies have applied machine-learning to the prediction of  
76 diagnosis or treatment outcomes<sup>9-11</sup>, no study using machine-learning has focused on  
77 vitamin B deficiencies. We herein explore whether vitB<sub>1</sub>, vitB<sub>12</sub>, and folate deficiencies  
78 can be predicted using a machine-learning classifier from patient characteristics and  
79 routine blood test results obtained within one hour based on a large cohort of patients  
80 requiring urgent psychiatric hospitalization.

81

## 82 **2. Methods**

### 83 **2.1. Medical chart review**

84 We reviewed consecutive patients admitted to the Department of  
85 Neuropsychiatry at Tokyo Metropolitan Tama Medical Center, one of the biggest  
86 psychiatric tertiary-care centers in Japan, between September 2015 and August 2017  
87 under the urgent involuntary hospitalization law, which requires the immediate  
88 psychiatric hospitalization of patients at imminent risk of seriously harming themselves  
89 or others. The necessity of hospitalization was judged by designated mental health  
90 specialists. There were no exclusion criteria. The patient characteristics, ICD-10 codes,  
91 and laboratory data were gathered retrospectively.

92 Since the reference ranges for vitB<sub>1</sub>, vitB<sub>12</sub>, and folate are 70–180 nmol/L  
93 (30–77 ng/mL), 180–914 ng/L, and > 4.0 µg/L, respectively<sup>12</sup>, a deficiency of the  
94 nutrients was defined as < 30 ng/mL, < 180 ng/L, and < 4.0 µg/L, respectively, unless  
95 otherwise stated. The odds ratios of each deficiency in each ICD-10 code were  
96 calculated assuming binomial distribution.

97

### 98 **2.2. Classifiers and statistics**

99 We compared four types of standard machine-learning classifiers; k-nearest  
100 neighbors, logistic regression, support vector machine, and random forest. Each type of  
101 classifier was trained to predict the deficiency of each substance from age, sex, and 29  
102 routine blood variables (described in the Result section with values). For developing the  
103 models, any missing values were replaced using the mean. The classifiers were trained  
104 using the dataset populated in the period from September 2015 to December 2016 (the  
105 “Training set”). First, except for logistic regression, we optimized the hyperparameters  
106 of the classifier by selecting the best combination of hyperparameters that maximized  
107 the “5-fold cross validation” accuracy, among many combinations within appropriate  
108 ranges. The cross-validation accuracy was computed as follows; in one session, the

109 classifiers were trained using 80% of the training set and evaluated on the withheld 20%  
110 of the training set. This session was performed five times so that every data would be  
111 withheld once. The accuracies were finally averaged across sessions to yield the  
112 cross-validation accuracy. By incorporating this process, the classifiers were  
113 generalized to unseen data (Graphical method is shown in **Figure 1**).

114 Using the optimized hyperparameters, the classifiers were then validated using  
115 data collected from January 2017 through August 2017 (the “Validation set”). We  
116 report the classification performance on the validation set in the results section unless  
117 otherwise stated.

118 We quantified the sensitivity, specificity, and accuracy (defined as the average  
119 of the sensitivity and the specificity on the optimal operating point) using receiver  
120 operating characteristic curves (ROCs). We also quantified the 95% confidence interval  
121 of the area under the ROCs (AUCs) and accuracy using 1000-times bootstrapping.

122 When investigating the Gini importance and the partial dependency<sup>13</sup>, we  
123 retrained the classifiers using all datasets. All data analyses were performed using  
124 Python (2.7.10) with the Scikit-learn package (0.19.0) and R (3.4.2) with the edarf  
125 package (1.1.1) and pROC package (1.15.3).

126

### 127 **2.3. Robustness verification**

128 We verified the robustness of the prediction performances by three independent  
129 approaches. First, we compared the following two prediction performances; random  
130 forest classifiers trained and validated using the dataset from the F2 population, and  
131 random forest classifiers trained and validated using the dataset from the non-F2  
132 population.

133 Second, we compared the prediction performances of several random forest  
134 classifiers trained and validated using the dataset where different cut-off values were  
135 used to define the vitamin deficiency. We chose other two cut-off values for each

136 vitamin based on previous reports<sup>14-16</sup>, as well as pre-defined cut-off values (see also  
137 2.1.).

138 Third, we trained and validated other random forest classifiers where the  
139 dataset was split in a different way. Here, the training set consisted of data between the  
140 31<sup>st</sup> of January, 2016 and August 2017 and the validation set consisted of data between  
141 September 2015 and the 31<sup>st</sup> of January, 2016 so that the sample sizes of the training  
142 and validation sets were equal to those in the original split.

143

#### 144 **2.4. Subsampling analysis**

145 We also examined the relationship between the dataset size and the  
146 generalization performance<sup>17</sup>. In this analysis, we trained the random forest classifiers  
147 using X% of the training set (X = 30, 35, 40, ..., 95, and 100), and validated them using  
148 the validation set. The hyperparameters were identical to those used in the previous  
149 section. To remove sampling bias, this procedure was repeated 100 times for each value  
150 of X, where the training dataset was sampled randomly for each repetition. This results  
151 in obtaining 100 AUC scores for each X and for each vitamin. We plotted the AUC  
152 scores (averaged across the 100 repetition) versus X for each vitamin. Then the curve  
153 was fit with the following saturating function using Levenberg-Marquardt algorithm  
154 implemented as “curve\_fit” function in the Scipy package (0.19.0).

$$Y = \frac{a * X}{X + b} + 0.5 \#(1)$$

155 where Y is the AUC score, and a and b are the parameters to fit. Note that  
156  $Y \rightarrow a + 0.5$  as  $X \rightarrow \infty$ , and  $Y = 0.5$  as  $X = 0$ .

157

#### 158 **2.5. Ethical considerations**

159 Informed consent was obtained from participants using an opt-out form on the  
160 website. The study protocol was approved by the Research Ethics Committee, Tokyo

161 Metropolitan Tama Medical Center (Approval number: 28-8). The study complied with  
162 the Declaration of Helsinki and the STROBE statement.  
163



## 164 **3. Results**

### 165 **3.1. Eligible patients**

166 During the 2-year study period, 497 consecutive patients (496 were Asian)  
167 were enrolled. The mean age (standard deviation, SD) was 42.3 ( $\pm$ 15.4) years, and 228  
168 patients (45.9%) were women. F2 (Schizophrenia, schizotypal, delusional, and other  
169 non-mood psychotic disorders) was diagnosed in over 60% of the patients. The ICD-10  
170 codes of the patients and the number of deficiencies at several cut-off values for vitB<sub>1</sub>,  
171 vitB<sub>12</sub>, and folate are shown in **Table 1**. According to the predefined cut-off values<sup>12</sup>,  
172 112 (22.5%), 80 (16.1%), and 72 (14.5%) patients exhibited a deficiency of vitB<sub>1</sub> (<30  
173 ng/mL), vitB<sub>12</sub> (<180 ng/L), and folate (<4.0  $\mu$ g/L), respectively. Vitamin B deficiencies  
174 in sub-groups are shown in **Table 2**. A summary of the full dataset is shown in **Table 3**.  
175 Detailed information (sub-datasets) is shown in **Supplementary Table 1, 2, and 3**  
176 online. Histograms of vitB<sub>1</sub>, vitB<sub>12</sub>, and folate values are shown in **Figure 2 A-C**.

177

### 178 **3.2. Prediction via machine-learning using routine blood test results**

179 Machine-learning classifiers were trained to predict the deficiency of each  
180 substance from patient characteristics and routine blood test results. The classifiers were  
181 trained using the dataset gathered in the period from September 2015 to December 2016  
182 (the “Training set”, n = 373), which was then validated from January 2017 through  
183 August 2017 (the “Validation set”, n = 124). By splitting the whole dataset in this way,  
184 the ratio of the training and validation sample size was 3:1, a commonly used ratio in  
185 machine-learning analyses.

186 AUCs for the validation set for each classifier are summarized in **Table 4**.  
187 Although the performance of the classifiers was similar except for the k-nearest  
188 neighbors, random forest yielded the highest AUC on average. Therefore, we focused  
189 on random forest in the following analysis.

190 The AUCs of the random forest classifiers were 0.716, 0.599, and 0.796, for  
191 vitB<sub>1</sub>, vitB<sub>12</sub>, and folate, respectively (**Figure 2 D-F** and **Table 4**). With some operative  
192 points on the ROC, the sensitivity, specificity, and accuracy for the validation set were  
193 calculated (**Table 4**. See also **Supplementary Table 4** for training set and  
194 **Supplementary Table 5** for different operating points). The 95% confidence interval  
195 (CI) of the AUC and accuracy was quantified using 1000-times bootstrapping. For  
196 random forest classifiers, the 95% CI of each value did not include 0.5, except for the  
197 AUC of vitB<sub>12</sub>.

198 **Figure 3** shows the Gini importance (a–c) and partial dependency plots (d–f)  
199 for the eight most important variables for each substance. The results provided further  
200 evidence of a relationship between the vitamin B levels and complete blood count while  
201 also indicating the hitherto rarely considered, potential association between these  
202 vitamins and alkaline phosphatase (ALP) or thyroid stimulating hormone (TSH).

203

### 204 **3.3. Robustness verification**

205 We verified the robustness of the results by three independent means. First, we  
206 asked if the prediction performance was influenced by the ICD-10 categories. When the  
207 prediction performances were compared between the random forest classifiers trained  
208 using the dataset from the F2 population and the classifiers trained using the dataset  
209 from the other population, the AUC was not statistically different (DeLong's test),  
210 except in the case of vitB<sub>1</sub> (see **Supplementary Table 6**).

211 Second, we used different cut-off values to define the deficiency<sup>14–16</sup>. Although  
212 the AUC for the validation set, shown in **Supplementary Table 7**, tended to be higher  
213 when strict cut-off values were used, the obtained AUCs were not statistically  
214 significant ( $p > 0.05$ , DeLong's test with Bonferroni correction).

215 Third, we investigated if the prediction performance was influenced by the way  
216 the dataset was split into the training and validation set. Here, we trained and evaluated

217 random forest classifiers using a dataset split in a reversed way (see Methods for  
218 details); The AUCs for the validation set were 0.771, 0.621, and 0.745 for vitB<sub>1</sub>, vitB<sub>12</sub>,  
219 and folate, respectively; none were statistically different from the AUC trained using the  
220 original setting (DeLong's test), further demonstrating the robustness of the  
221 performance.

222

### 223 **3.4. Subsampling analysis**

224 To estimate the number needed to saturate the performance, we examined the  
225 relationship between the generalizability and the sample size<sup>17</sup>. We randomly sampled  
226 X% of the training set, trained random forest classifiers using the dataset, and evaluated  
227 the generalization performance by AUCs using the validation set (X = 30, 35, 40, ..., 95,  
228 and 100; see Methods for details). As shown in **Figure 4**, the relationships between  
229 AUC and the training size for vitB<sub>1</sub> and vitB<sub>12</sub> were almost saturated, whereas that for  
230 folate is not saturated. To quantitatively understand this, we fitted each curve using a  
231 saturating function formulated in equation (1) (see Methods for details). The fitted  
232 parameters of equation (1) were as follows; for vitB<sub>1</sub>, a = 0.186 and b = 0.074; for  
233 vitB<sub>12</sub>, a = 0.099 and b = 0.156; and for folate, a = 0.291 and b = 0.123. By using these  
234 parameter values and extrapolating the curve, we then computed how many additional  
235 samples are necessary to reach almost maximum performances. To reach 99% of the  
236 maximum performance (i.e.  $Y = (a + 0.5) \times 0.99$  in equation (1)), the training dataset to  
237 be collected was 92.5%, 143%, and 341% of the training size in this study for vitB<sub>1</sub>,  
238 vitB<sub>12</sub>, and folate, respectively. These quantitative analyses revealed that collecting  
239 further similar datasets up to 1,000 patients (e.g. four years × hospitals with similar  
240 scale as Tokyo Metropolitan Tama Medical Center) may increase and reproduce the  
241 generalizability for folate, while the effect of collecting further dataset is expected to be  
242 small for vitB<sub>1</sub> and vitB<sub>12</sub>.

243

## 244 **4. Discussion**

### 245 **4.1. Relevance of the present study**

246           Based on the largest cohort to date of patients at imminent risk of seriously  
247 harming themselves or others, this study indicated that deficiency of certain vitamins  
248 can be predicted in an efficient manner via machine-learning using routine blood test  
249 results. The 29 routine blood variables are available at almost all hospitals/clinics and  
250 are necessary to rule out other comorbid physical problems. Given the large number of  
251 patients with vitamin B deficiencies, empirical therapy might be acceptable; however,  
252 risk stratification is preferred for personalized medicine and shared decision-making.  
253 The prediction method presented here may expedite clinical decision-making as to  
254 whether vitamins should be prescribed to a patient (Graphical abstract is shown in  
255 **Figure 5**).

256           Remarkably, the AUC of folate deficiency was 0.796. The robustness of folate  
257 prediction was also suggested by various independent methods and statistics. Folate has  
258 a potential to maintain neuronal integrity and is one of the homocysteine-reducing  
259 B-vitamins<sup>5</sup>. Homocysteine may be linked to the etiology of schizophrenia<sup>18</sup>, and  
260 vitamin B supplements have been reported to reduce psychiatric symptoms significantly  
261 in patients with schizophrenia<sup>7</sup>. A recent meta-review has pointed out that the  
262 bioactivity of the supplement should be considered (e.g. methylfolate, which  
263 successfully crosses the blood-brain barrier, has been reported effective, whereas the  
264 effect of other forms of folate is equivocal)<sup>19</sup>. As our study does not present longitudinal  
265 clinical courses, an intervention effect of folate supplementation to the cohort based on  
266 our method remains to be clarified.

267

### 268 **4.2. Biological mechanism prediction**

269           To connect with biological knowledge, we compared four models with high  
270 interpretability in this study. Using the random forest classifiers, as shown in **Figure 3**,

271 we identified several items related to complete blood count as top hits. Notably, our  
272 classifier was blind to any biological knowledge, including the well-established  
273 association between anemia and vitamin B deficiency, including folate<sup>20</sup>. The results  
274 provide further evidence of a relationship between vitamin B levels and the complete  
275 blood count and support the use of machine-learning to investigate novel, underlying  
276 biological mechanisms<sup>21</sup>.

277 ALP and its metabolites indicate the vitamin B<sub>6</sub> status<sup>22</sup>; low vitB<sub>12</sub> is  
278 potentially associated with low ALP<sup>23</sup>. More generally, ALP may have a close and  
279 complicated relationship with the overall vitamin B group. Autoimmune disorders,  
280 especially thyroid disease, are commonly associated with pernicious anaemia<sup>24</sup>, but  
281 there has been no established hypothesis regarding the causal relationships between  
282 thyroid disease and vitamin B deficiencies. The potential association between the levels  
283 of these vitamins and ALP or TSH awaits further study, both via investigations of  
284 populations and basic research<sup>25</sup>.

285

### 286 **4.3. Limitations**

287 This study is subject to several limitations. First, the findings of this  
288 single-center retrospective study may have limited external generalizability, though  
289 internal generalizability was considered to the maximum extent. Second, the patients'  
290 basic characteristics and long-term prognosis were not fully investigated due to  
291 administrative restrictions. Though there is similar involuntary treatment/admission in  
292 psychiatry worldwide, there is a gap between legislation and practice<sup>26</sup>. Therefore, the  
293 extent to which this method can expedite clinical decision-making is unclear.

294 Further, we did not investigate the relationship between serological values and  
295 the need for intervention. The lack of data for vitamin B deficiency in the Japanese  
296 general population hampered the comparison between the experimental cohort and their  
297 counterparts who lacked psychiatric symptoms. Establishing appropriate reference

298 values and an assessment method requires further investigation. Finally, we did not  
299 assess the predictive value of other nutritional impairments, including vitamin B<sub>6</sub> and  
300 homocysteine deficiency, which were previously shown to have a close link with  
301 psychiatric symptoms<sup>3,5</sup>; however, our study provides fundamental data on nutritional  
302 impairment based on the largest cohort of patients with intense psychiatric episode ever  
303 assembled for this purpose and presents a potential framework for predicting nutritional  
304 impairment using machine-learning.

305

#### 306 **4.4. Conclusion**

307         The present report is, to the best of our knowledge, the first to demonstrate that  
308 machine-learning can efficiently predict nutritional impairment. This study also  
309 provided the possible application of machine-learning to investigate novel, underlying  
310 biological mechanisms. Further research is needed to validate the external  
311 generalizability of the findings in other clinical situations and clarify whether  
312 interventions based on this method can improve patient care and cost-effectiveness.  
313

314 **5. Contribution to the Field Statement**

315 Vitamin B deficiency is common worldwide and may lead to psychiatric  
316 symptoms; however, vitamin B deficiency epidemiology in patients with intense  
317 psychiatric symptoms has rarely been examined. Moreover, vitamin deficiency testing  
318 is costly and time-consuming. Based on the largest cohort to date of patients at  
319 imminent risk of seriously harming themselves or others, this study demonstrated that  
320 the deficiency of certain vitamins can be predicted in an efficient manner via  
321 machine-learning models from patient characteristics and routine blood test results  
322 obtained within one hour.

323 In detail, among the 497 patients investigated (over 60% was diagnosed with  
324 schizophrenia or related psychotic disorders), 22.5%, 16.1%, and 14.5% patients had a  
325 deficiency of vitamin B<sub>1</sub>, B<sub>12</sub>, and folate, respectively, by direct measurement. Further,  
326 the machine-learning models well generalized to predict the deficiency in unseen  
327 datasets; areas under the receiver operating characteristic curves (AUCs) for the  
328 validation dataset were 0.716, 0.599, and 0.796, respectively. The prediction method  
329 presented in this study may expedite risk stratification and clinical decision-making  
330 regarding whether replacement therapy should be prescribed. The results also provided  
331 further evidence for well-known relationships between these vitamins and the complete  
332 blood count and supported the application of machine-learning to investigate novel,  
333 underlying biological mechanisms.  
334

335 **6. Acknowledgements**

336 We thank Mr. James Robert Valera for his assistance in editing this manuscript  
337 and all the staff for their care of the patients and their contributions to this study. This  
338 manuscript has been previously published as a preprint<sup>27</sup> in medRxiv  
339 (<https://doi.org/10.1101/19004317>).

340

341 **7. Author Contributions Statement**

342 H. Tamune has full access to all data and takes responsibility for the integrity  
343 of the data. H. Tamune, JU, KN, and NY conceived the study. H. Tamune, YH, and H.  
344 Tanaka collected the data. JU performed the statistical analyses. H. Tamune and JU  
345 drafted the first version of the manuscript. All authors critically revised the manuscript  
346 for intellectual content and approved the final version.

347

348 **8. Data Availability Statements**

349 The source code will be available on  
350 <https://github.com/ukky17/vitaminPrediction> after acceptance. The datasets utilized in  
351 the current study are available from the corresponding author upon reasonable request.

352

353 **9. Conflict of Interest Statement**

354 The authors declare no conflict of interest, except for a scholarship grant  
355 awarded to JU from Takeda Science Foundation and Masayoshi Son Foundation.

356



357 **References**

- 358 1. Harper C. Thiamine (vitamin B1) deficiency and associated brain damage is still  
359 common throughout the world and prevention is simple and safe! *Eur J Neurol.* (2006)  
360 13: 1078–1082.
- 361 2. Reynolds E. Vitamin B12, folic acid, and the nervous system. *Lancet Neurol.* (2006)  
362 5: 949–960.
- 363 3. Arai M, Yuzawa H, Nohara I, Ohnishi T, Obata N, Iwayama Y *et al.* Enhanced  
364 carbonyl stress in a subpopulation of schizophrenia. *Arch Gen Psychiatry* (2010) 67:  
365 589–597.
- 366 4. Cao B, Wang DF, Xu MY, Liu YQ, Yan LL, Wang JY *et al.* Lower folate levels in  
367 schizophrenia: A meta-analysis. *Psychiatry Res.* (2016) 245: 1–7.
- 368 5. Firth J, Carney R, Stubbs B, Teasdale SB, Vancampfort D, Ward PB, *et al.*  
369 Nutritional deficiencies and clinical correlates in first-episode psychosis: A systematic  
370 review and meta-analysis. *Schizophr Bull.* (2018) 44: 1275–1292.
- 371 6. Levine J, Stahl Z, Sela BA, Ruderman V, Shumaico O, Babushkin I *et al.*  
372 Homocysteine-reducing strategies improve symptoms in chronic schizophrenic patients  
373 with hyperhomocysteinemia. *Biol Psychiatry* (2006) 60: 265–269.
- 374 7. Firth J, Stubbs B, Sarris J, Rosenbaum S, Teasdale S, Berk M *et al.* The effects of  
375 vitamin and mineral supplementation on symptoms of schizophrenia: A systematic  
376 review and meta-analysis. *Psychol Med.* (2017) 47: 1515–1527.
- 377 8. Itokawa M, Miyashita M, Arai M, Dan T, Takahashi K, Tokunaga T *et al.*  
378 Pyridoxamine: A novel treatment for schizophrenia with enhanced carbonyl stress.  
379 *Psychiatry Clin Neurosci.* (2018) 72: 35–44.
- 380 9. Koutsouleris N, Kahn RS, Chekroud AM, Leucht S, Falkai P, Wobrock T *et al.*  
381 Multisite prediction of 4-week and 52-week treatment outcomes in patients with  
382 first-episode psychosis: A machine learning approach. *Lancet Psychiatry* (2016) 3:  
383 935–946.

- 384 10. Mechelli A, Lin A, Wood S, McGorry P, Amminger P, Tognin S *et al.* Using  
385 clinical information to make individualized prognostic predictions in people at  
386 ultra-high risk for psychosis. *Schizophr Res.* (2017) 184: 32-38.
- 387 11. Vieira S, Pinaya WH, Mechelli A. Using deep learning to investigate the  
388 neuroimaging correlates of psychiatric and neurological disorders: Methods and  
389 applications. *Neurosci Biobehav Rev.* (2017) 74: 58–75.
- 390 12. Mayo Foundation for Medical Education and Research, Rochester Test Catalog.  
391 <https://www.mayomedicallaboratories.com/test-catalog/> (2018).
- 392 13. Friedman, JH. Greedy function approximation: A gradient boosting machine. *Ann.*  
393 *Stat.* (2001) 29: 1189–1232.
- 394 14. Sasaki T, Yukizane T, Atsuta H, Ishikawa H, Yoshiike T, Takeuchi T *et al.* A case  
395 of thiamine deficiency with psychotic symptoms: Blood concentration of thiamine and  
396 response to therapy. *Seishin Shinkeigaku Zasshi* (2010) 112: 97–110.
- 397 15. Clarke R, Refsum H, Birks J, Evans JG, Johnston C, Sherliker P *et al.* Screening for  
398 vitamin B-12 and folate deficiency in older persons. *Am J Clin Nutr.* (2003) **77**:  
399 1241–1247.
- 400 16. Goff DC, Bottiglieri T, Arning E, Shih V, Freudenreich O, Evins AE *et al.* Folate,  
401 homocysteine, and negative symptoms in schizophrenia. *Am J Psychiatry* (2004) 161:  
402 1705–1708.
- 403 17. Gulshan V, Peng L, Coram M, Stumpe MC, Wu D, Narayanaswamy A *et al.*  
404 Development and Validation of a Deep Learning Algorithm for Detection of Diabetic  
405 Retinopathy in Retinal Fundus Photographs. *JAMA* (2016) 316:2402-2410.
- 406 18. Muntjewerff JW, Kahn RS, Blom HJ, den Heijer M. Homocysteine,  
407 methylenetetrahydrofolate reductase and risk of schizophrenia: A meta-analysis. *Mol*  
408 *Psychiatry* (2006) 11: 143–149.

- 409 19. Firth J, Teasdale SB, Allott K, Siskind D, Marx W, Cotter J *et al.* The efficacy and  
410 safety of nutrient supplements in the treatment of mental disorders: a meta-review of  
411 meta-analyses of randomized controlled trials. *World Psychiatry* (2019) 18:308-324.
- 412 20. Evans TC, Jehle D. The red blood cell distribution width. *J Emerg Med.* (1991) 9:  
413 71–74.
- 414 21. So HC, Chau CK, Chiu WT, Ho KS, Lo CP, Yim SH *et al.* Analysis of  
415 genome-wide association data highlights candidates for drug repositioning in psychiatry.  
416 *Nat Neurosci.* (2017) 20: 1342–1349.
- 417 22. Ueland PM, Ulvik A, Rios-Avila L, Midttun Ø, Gregory JF. Direct and functional  
418 biomarkers of vitamin B6 status. *Annu Rev Nutr.* (2015) 35: 33–70.
- 419 23. Carmel R, Lau KH, Baylink DJ, Saxena S, Singer FR. Cobalamin and  
420 osteoblast-specific proteins. *N Engl J Med.* (1977) 319: 70–75.
- 421 24. Stabler SP. Vitamin B12 deficiency. *N Engl J Med.* (2013) 368: 149–160.
- 422 25. Zheng Y, Cantley LC. Toward a better understanding of folate metabolism in health  
423 and disease. *J Exp Med.* (2018) 216: 253–266.
- 424 26. Saya A, Brugnoli C, Piazzini G, Liberato D, Di Ciaccia G, Niolu C *et al.* Criteria,  
425 Procedures, and Future Prospects of Involuntary Treatment in Psychiatry Around the  
426 World: A Narrative Review. *Front Psychiatry* (2019) 10: 271.
- 427 27. Tamune H, Ukita J, Hamamoto Y, Tanaka H, Narushima K, Yamamoto N. Efficient  
428 prediction of vitamin B deficiencies via machine-learning using routine blood test  
429 results in patients with intense psychiatric episode. *medRxiv.* (2019) doi:  
430 10.1101/19004317  
431

432 **Supporting Material List**

433 Supplementary Table 1 (related to Table 1). Divided patient distribution data (n = 497)

434 Supplementary Table 2 (related to Table 2). Divided data of vitamin B deficiencies in

435 sub-groups

436 Supplementary Table 3 (related to Table 3). Divided dataset of age, sex, and 29

437 parameters

438 Supplementary Table 4 (related to Table 4). Summary of sensitivity, specificity, and

439 accuracy for the training set

440 Supplementary Table 5 (related to Table 4). Sensitivities and specificities at other

441 operating points

442 Supplementary Table 6. Subgroup analyses

443 Supplementary Table 7. AUC with different cut-off values

444

445 **Legends**

446 **Figure 1: Graphical illustration of method of machine-learning**

447

448 **Figure 2: Histogram and ROC curves of each vitamin B value**

449 (A-C) The histograms for vitamin B<sub>1</sub>, vitamin B<sub>12</sub>, and folate (vitamin B<sub>9</sub>).

450 Their medians (1<sup>st</sup>–3<sup>rd</sup> quartile) are 35 (30–42) ng/mL, 285 (206–431) ng/L, and 7.2

451 (4.9–10.8) µg/L, respectively.

452 (D-F) ROC curves for vitamin B<sub>1</sub>, vitamin B<sub>12</sub>, and folate. Operating points

453 used in **Table 4** and **Supplementary Table 5** are depicted in blue.

454 Abbreviations: Vit B<sub>1</sub>, vitamin B<sub>1</sub>; Vit B<sub>12</sub>, vitamin B<sub>12</sub>.

455

456 **Figure 3: Gini importance and partial dependence plots of vitamin B deficiencies**

457 The Gini importance (A-C) and partial dependency plots of the probability of

458 deficiency (D-F) are shown for the eight most important variables for vitamin B<sub>1</sub>,

459 vitamin B<sub>12</sub>, and folate (vitamin B<sub>9</sub>). Combined with these, this machine-learning

460 classifier without hypothesis also provided further evidence of a relationship between

461 vitamin B levels and the complete blood count while also indicating a potential

462 association between these vitamins and alkaline phosphatase (ALP) or

463 thyroid-stimulating hormone (TSH).

464 Abbreviations: Vit B<sub>1</sub>, vitamin B<sub>1</sub>; Vit B<sub>12</sub>, vitamin B<sub>12</sub>; Hb, hemoglobin; Hct,

465 hematocrit; WBC, white blood cell count; CK, creatine kinase; RDW.CV, red blood cell

466 distribution width-coefficient variation; Plt, platelet; ALT, alanine transaminase; Lym,

467 lymphocyte fraction; Cre, creatinine; Neu, neutrocyte fraction; γGTP,

468 γ-glutamyltransferase; MCV, mean corpuscular volume; glu, plasma glucose.

469

470 **Figure 4: Subsampling analysis**

471 The AUC performances as a function of the dataset size is shown for each

472 vitamin (mean ± SEM across 100 repetitions; see Methods for details).

473

474 **Figure 5: Graphical abstract**

475

476 **Table 1. Patient distribution data (n = 497)**

477

Age	Sex	Race
42.3 (15.4) years	Woman 228 (45.9%)	Asian 496
	Man 269 (54.1%)	Others 1

478

	ICD-10 code										VitB <sub>1</sub> [ng/mL]			VitB <sub>12</sub> [ng/L]			Folate [µg/L]		
	F0	F1	F2	F3	F4	F5	F6	F7	F8	F9	<20	<28	<30*	<150	<180*	<200	<3.0	<4.0*	<5.0
N	28	21	300	58	16	0	29	20	24	1	15	81	112	37	80	107	29	72	134
%	5.6	4.2	60.4	11.7	3.2	0.0	5.8	4.0	4.8	0.2	3.0	16.3	22.5	7.4	16.1	21.5	5.8	14.5	27.0

479

480 Age is shown as mean (SD). Asterisks show the predefined cut-off values for vitamin  
 481 B<sub>1</sub>, vitamin B<sub>12</sub>, and folate (vitamin B<sub>9</sub>) based on a reference<sup>12</sup>; different cut-off values  
 482 based on previous reports<sup>14-16</sup> are also presented for further investigation.

483

484 ICD-10 codes. F0, Mental disorders due to known physiological conditions; F1, Mental  
 485 and behavioral disorders due to psychoactive substance use; F2, Schizophrenia,  
 486 schizotypal, delusional, and other non-mood psychotic disorders; F3, Mood disorders;  
 487 F4, Anxiety, dissociative, stress-related, somatoform, and other non-psychotic mental  
 488 disorders; F5, Behavioral syndromes associated with physiological disturbances and  
 489 physical factors; F6, Disorders of adult personality and behavior; F7, Intellectual  
 490 disabilities; F8, Pervasive and specific developmental disorders; F9, Behavioral and  
 491 emotional disorders with onset usually occurring in childhood and adolescence.

492

493 **Table 2. Vitamin B deficiencies in sub-groups**

494

	F0	F1	F2	F3	F4	F6	F7	F8	F9
vitB <sub>1</sub> < 30	9	4	70	11	3	7	5	3	0
[ng/mL]	(32%)	(19%)	(23%)	(19%)	(19%)	(24%)	(25%)	(13%)	
vitB <sub>12</sub> < 180	5	4	53	7	3	1 (3%)	4	3	0
[ng/L]	(18%)	(19%)	(18%)	(12%)	(19%)		(20%)	(13%)	
Folate < 4.0	5	7	38	6	5	3	4	4	0
[μg/L]	(18%)	(33%)	(13%)	(10%)	(31%)	(10%)	(20%)	(17%)	

495

Odds ratio	F0	F1	F2	F3	F4	F6	F7	F8	F9
vitB <sub>1</sub> < 30	1.68	0.80	1.12	0.78	0.79	1.10	1.15	0.48	0
[ng/mL]	[0.74- 3.83]	[0.26- 2.43]	[0.73- 1.73]	[0.39- 1.57]	[0.22- 2.81]	[0.46- 2.65]	[0.41- 3.24]	[0.14- 1.63]	
vitB <sub>12</sub> < 180	1.14	1.24	1.35	0.69	1.21	0.18	1.32	0.73	0
[ng/L]	[0.42- 3.10]	[0.41- 2.43]	[0.82- 2.23]	[0.30- 1.58]	[0.34- 4.35]	[0.02- 1.31]	[0.43- 4.05]	[0.21- 2.52]	
Folate < 4.0	1.30	3.16	0.70	0.65	2.81	0.59	1.32	1.04	0
[μg/L]	[0.48- 3.55]	[1.23- 8.13]	[0.42- 1.15]	[0.27- 1.58]	[0.95- 8.34]	[0.17- 1.98]	[0.43- 4.05]	[0.35- 3.14]	

496

497 Square brackets indicate the 95% confidence interval.

498 Abbreviations; see **Table 1**.

499

500



501 **Table 3. Summary of full dataset of age, sex, and 29 parameters for**  
 502 **machine-learning**

503

Parameters	Units	Mean	SD	UN	mg/dL	12.9	6.7
Age	years	42.3	15.4	Cre	mg/dL	0.7	0.2
Sex	Woman	n = 228		T.bil	mg/dL	0.7	0.4
WBC	$\times 10^3/\mu\text{L}$	8.2	2.8	Na	mmol/L	139	3
Hb	g/dL	13.7	1.7	Cl	mmol/L	105	4
Hct	%	40.3	4.5	K	mmol/L	3.7	0.4
MCV	fL	89	6.6	cor.Ca	mg/dL	9.1	0.5
Plt	$\times 10^4/\mu\text{L}$	24.9	6.3	CK	IU/L	514	1230
RDW.CV	%	13.5	1.3	AST	IU/L	31	34
Neu	%	70	11	ALT	IU/L	27	24
Lym	%	23	10	LDH	IU/L	239	91
Mono	%	6	2	ALP	IU/L	224	81
Eo	%	1	2	$\gamma\text{GTP}$	IU/L	37	63
Baso	%	0	0	Glu	mg/dL	112	40
TP	g/dL	7.2	0.6	CRP	mg/dL	0.4	0.9
Alb	g/dL	4.4	0.4	TSH	$\mu\text{IU/mL}$	1.7	2.4

504

505 Two patients lacked age data (no photo ID was available), and one patient lacked  
 506 biochemistry data (inappropriate sample processing). For machine-learning, the missing  
 507 values were replaced using the mean.

508

509 Abbreviations: WBC, white blood cell count; Hb, hemoglobin; Hct, hematocrit; MCV,  
 510 mean corpuscular volume; RDW.CV, red blood cell distribution width-coefficient  
 511 variation; Plt, platelet; Neu, neutrocyte fraction; Lym, lymphocyte fraction; Mono,  
 512 monocyte fraction; Eo, eosinocyte fraction; Baso, basocyte fraction; TP, total protein;  
 513 Alb, albumin; UN, urea nitrogen; Cre, creatinine; T.bil, total bilirubin; Na, sodium; Cl,

514 chloride; K, potassium; cor.Ca, corrected calcium; CK, creatine kinase; AST, aspartate  
515 transaminase; ALT, alanine transaminase; LDH, lactate dehydrogenase; ALP, alkaline  
516 phosphatase;  $\gamma$ GTP,  $\gamma$ -glutamyltransferase; Glu, plasma glucose; CRP, C-reactive  
517 protein; TSH, thyroid-stimulating hormone.  
518

519 **Table 4. Summary of AUC, sensitivity, specificity, and accuracy for the validation**  
 520 **set**

521 AUC

Classifier	vitB <sub>1</sub>	vitB <sub>12</sub>	Folate	Average
k-nearest neighbors	0.596 [0.483–0.702]	0.542 [0.394–0.705]	0.514 [0.383–0.651]	0.551
Logistic regression	0.715 [0.602–0.815]	0.602 [0.454–0.745]	0.754 [0.610–0.877]	0.690
Support vector machine	0.715 [0.613–0.814]	0.620 [0.472–0.763]	0.699 [0.536–0.842]	0.678
Random forest	0.716 [0.610–0.825]	0.599 [0.426–0.755]	0.796 [0.656–0.911]	0.704

522

523 Sensitivity, specificity, and accuracy for random forest

	vitB <sub>1</sub>	vitB <sub>12</sub>	Folate
Sensitivity	0.594	0.316	0.667
Specificity	0.783	0.943	0.917
Accuracy	0.688 [0.597–0.787]	0.629 [0.523–0.746]	0.792 [0.665–0.909]

524

525 Generalization performance of the classifiers was evaluated using AUC of the  
 526 validation set for each type of classifiers. For random forest classifiers, sensitivity,  
 527 specificity, and accuracy of the classification at the optimal operating points that  
 528 maximized accuracy on the receiver operating characteristic curve of the validation set  
 529 are also shown (see also **Figure 2 D-F**). Accuracy was defined as the average of the  
 530 sensitivity and specificity. Square brackets indicate the 95% confidence interval. For  
 531 further information, see **Figure 2** and **Supplementary Table 5**.

532

533 Abbreviations: AUC, area under the receiver operating characteristic curve.

534

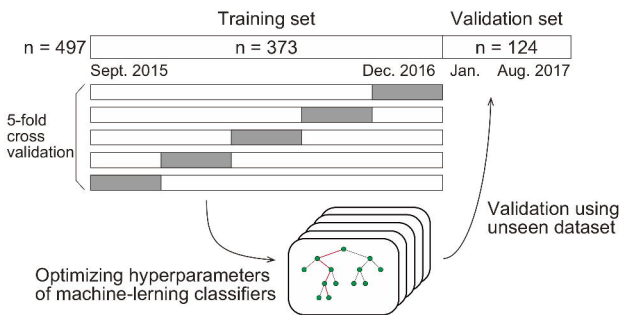
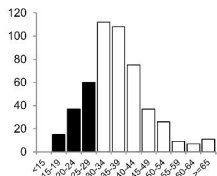
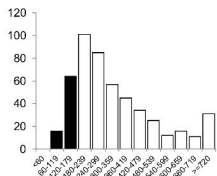


Figure 1

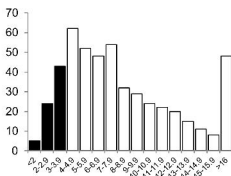
(A) Vit B<sub>1</sub>



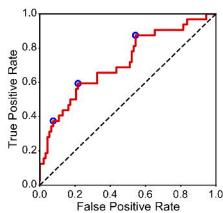
(B) Vit B<sub>12</sub>



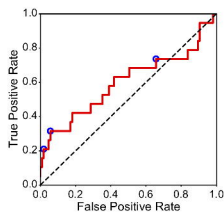
(C) Folate



(D) Vit B<sub>1</sub>



(E) Vit B<sub>12</sub>



(F) Folate

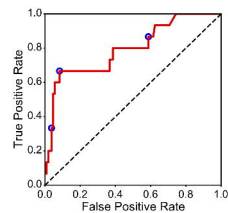
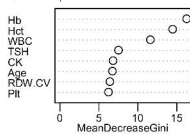
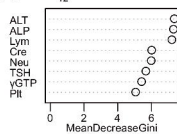


Figure 2

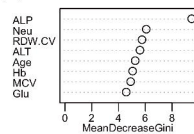
(A) Vit B<sub>1</sub>



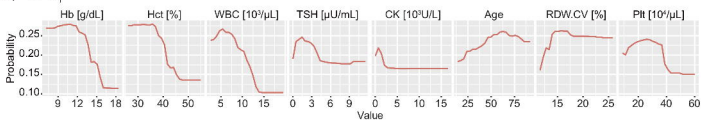
(B) Vit B<sub>12</sub>



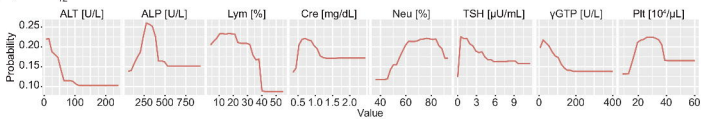
(C) Folate



(D) Vit B<sub>1</sub>



(E) Vit B<sub>12</sub>



(F) Folate

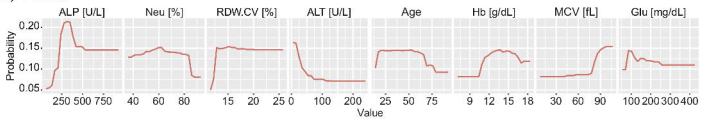


Figure 3

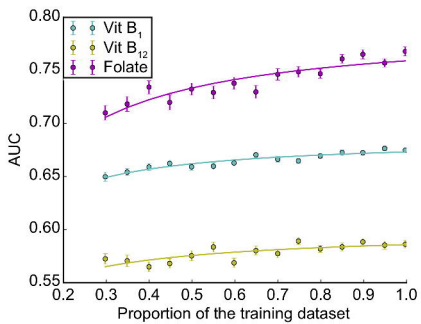


Figure 4



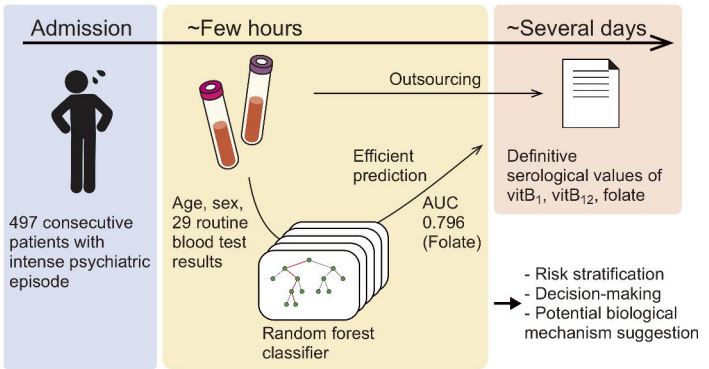


Figure 5