

1 Original Article

2

3 **Long-term Air Pollution Exposure are Associated with Higher Incidence of ST-**
4 **elevation Myocardial Infarction and In-hospital Cardiogenic Shock**

5

6 Jinah Cha, BS^{1,3*}, Se Yeon Choi, PhD^{2*}, Seung-Woon Rha, MD, PhD^{1,3}, Byoung Geol Choi,
7 PhD², Jae Kyeong Byun, PhD², Sujin Hyun, BS⁴, Min Woo Lee, PhD⁵, Jaeho Kang, MD³,
8 Wonsang Chu, MD³, Soohyung Park, MD³, Eun Jin Park, MD, PhD³, Dong Oh Kang, MD,
9 PhD³, Cheol Ung Choi, MD, PhD³, Suhng Wook Kim, PhD⁶, Myung ho Jeong, MD, PhD⁷

10 | and the other Korea Acute Myocardial Infarction Registry (KAMIR) investigators

11

12 ¹BK21 Graduate Program, Department of Biomedical Sciences, Korea University College of
13 Medicine, Seoul, Republic of Korea;

14 ²Cardiovascular Research Institution, Korea University College of Medicine, Seoul, Republic
15 of Korea;

16 ³ Department of Cardiology, Cardiovascular Center, Guro Hospital, Korea University College
17 of Medicine, Seoul, Republic of Korea;

18 ⁴Transdisciplinary Major in Learning Health Systems, Department of Healthcare Sciences,
19 Graduate School, Korea University;

20 ⁵Research Institute of Health Science, Korea University, Seoul, Korea;

21 ⁶School of Health and Environmental Science, College of Health Sciences, Korea University,
22 Seoul, Korea;

23 ⁷Department of Cardiology, Cardiovascular Center, Chonnam National University Hospital,
24 Gwangju, Republic of Korea.

25

26 * The first two authors (J Cha and SY Choi) contributed equally to this article.

27 Short title: Impact of Long-term Air Pollution Exposure on AMI

28 Correspondence to: Seung-Woon Rha, MD, Ph.D.;

29 Cardiovascular Center,

30 Korea University Guro Hospital,

31 148, Gurodong-ro, Guro-gu, Seoul 08308, Korea;

32 Tel.: +82-2-2626-3020;

33 Fax: +82-2-864-3062;

34 E-mail: swrha617@yahoo.co.kr

35 Total word count: 5,687

36 **Abstract**

37 **Background:** Previous studies have reported the association between myocardial infarction
38 (MI) and air pollution (AP). However, limited information is available regarding the long-
39 term effects of AP on the relative incidence rates of ST-elevation MI (STEMI) and Non-ST-
40 elevation MI (NSTEMI).

41 **Methods:** Study subjects were enrolled from the Korea Acute MI registry (KAMIR) and
42 KAMIR-National Institutes of Health (NIH). A total of 45,619 eligible patients with AMI
43 were enrolled between January 2006 and December 2015. We investigated the association
44 between long-term exposure to AP and compared the incidence of STEMI with those of
45 NSTEMI. Mixed-effect regression models were used to examine the association between the
46 annual average ambient AP before MI onset and the incidence of STEMI compared with that
47 of NSTEMI, and to evaluate the association of AP with the incidence of in-hospital
48 cardiogenic shock.

49 **Results:** After mixed-effect regression model analysis, each 1 $\mu\text{g}/\text{m}^3$ increase in particulate
50 matter (PM) 10 μm or less in diameter (PM_{10}) was associated with increased incidence of
51 STEMI compared with NSTEMI (odds ratio [OR]:1.009, 95% Confidence Interval [CI]:
52 1.002–1.016; $p = 0.012$). For in-hospital cardiogenic shock complication, each 1 $\mu\text{g}/\text{m}^3$
53 increase in PM_{10} and 1 part per billion increase in SO_2 were associated with increased risk,
54 PM_{10} (OR:1.033, 95% CI, 1.018–1.050; $p < 0.001$), SO_2 (OR:1.104, 95% CI, 1.006–1.212; p
55 = 0.037), respectively.

56 **Conclusion:** A high concentration of air pollutants, particularly PM_{10} , was an environmental
57 risk factor for an increase incidence of development of STEMI. PM_{10} and SO_2 were found to
58 be risk factors for in-hospital cardiogenic shock complications. Policy-level strategies and
59 clinical efforts to reduce AP exposure are necessary to prevent the incidence of STEMI and
60 severe cardiovascular complications.

61 **Key Words:** Air pollution, Particulate matter, Myocardial infarction, Cardiogenic Shock

62

63 **Clinical Perspective**

64 **What is new?**

- 65 - This study determined the long-term association between air pollutants and the
- 66 relative incidence of STEMI and NSTEMI using a large patient registry dataset.
- 67 - Air pollution, particularly involving PM₁₀, was associated with an increased risk of
- 68 STEMI compared with NSTEMI.
- 69 - In patients with Acute Myocardial Infarction (AMI), PM₁₀ and SO₂ were found to be
- 70 risk factors for the development of in-hospital cardiogenic shock complications.

71

72 **What are the clinical implications?**

- 73 - The findings of this study should be considered a milestone in developing a policy to
- 74 reduce AP exposure and prevent STEMI incidence in high-risk MI patients.
- 75 - Clinical efforts are necessary to reduce the incidence rates of adverse cardiovascular
- 76 complications such as cardiogenic shock.
- 77 - Mixed-effect regression model analysis for AP exposure is useful in providing
- 78 information that can enable early identification of STEMI patients and those with
- 79 severe complication cardiogenic shock risks.

80

81 **Non-standard Abbreviations and Acronyms**

ACS	acute coronary syndrome
AMI	acute myocardial infarction
AP	air pollution
BMI	body mass index
CAD	coronary artery disease
CI	confidence intervals
CO	carbon monoxide
CVA	cerebrovascular disease
DL	dyslipidemia
DM	diabetes mellitus
HF	heart failure
HTN	hypertension
IHD	Ischemic heart diseases
LVEF	left ventricular ejection fraction
MI	myocardial infarction
MVD	multivessel coronary artery disease
NO ₂	nitric dioxide
NSTEMI	Non-ST-elevation myocardial infarction
O ₃	ozone
OR	odds ratios
PCI	percutaneous coronary intervention
PM ₁₀	particulate matter 10 µm or less in diameter
PM _{2.5}	particulate matter 2.5 µm or less in diameter
ppm	part per million
SO ₂	sulfur dioxide
STEMI	ST-elevation myocardial infarction

82

83

84

85

86

87

88

89

90 **Introduction**

91 Ischemic heart diseases (IHD) including acute myocardial infarction (AMI) are a
92 public health burden and are a leading cause of mortality and morbidity worldwide. AMI is a
93 major cause of mortality in the Asia-Pacific region.¹⁻⁴ In particular, in patients with coronary
94 artery disease (CAD), air pollution (AP) is related to complications such as increased
95 hospitalization, re-admission, and early mortality.⁵⁻⁷ Exposure to highly polluted air is one of
96 the environmental factors that triggers AMI.⁸ There is a relationship between short and long-
97 term effects of exposure to AP; however, long-term exposure effects outnumber the sum of
98 all short-term effects.⁹ Most of the studies have focused on the association between the
99 effects of short-term exposure to AP and AMI.^{8,10,11} Our previous studies demonstrated that
100 AP exposure was associated with overall adverse clinical outcomes, including mortality, in
101 AMI patients based on short and long-term exposure and follow-up periods.^{12,13} However,
102 only few studies have reported on long-term AP exposure along with comparison between the
103 relative incidence of ST-elevation myocardial infarction(MI, STEMI) and that of Non-ST-
104 elevation myocardial infarction (Non-STEMI) and associated adverse effects related to
105 mortality.

106 This study is an extension of our previous study and aimed to clarify the association
107 between the long-term average concentration of AP and the relative risk of developing a
108 STEMI compared to a NSTEMI, as well as the relationship between the annual average
109 concentration of AP and cardiogenic shock, which was observed to be high in STEMI
110 patients.

111

112 **Methods**

113 **Study Protocols and Population**

114 The study subjects were enrolled in the Korea AMI registry (KAMIR) and KAMIR-
115 National Institutes of Health (NIH). The KAMIR study protocol has been introduced
116 previously.¹⁴ KAMIR and KAMIR-NIH are nationwide prospective multicenter registration
117 study series that aim to establish treatment guidelines and derive risk factors through the
118 analysis of various clinical characteristics and follow-up of Korean AMI patients since
119 October 2005 onwards. A flowchart of the study is shown in Figure 1. A total of 50,130
120 patients with AMI were enrolled in the KAMIR and KAMIR-NIH between January 2006 and
121 December 2015. The exclusion criteria were as follows: (1) date of symptom onset before
122 2006, (2) missing date of symptom onset, (3) age < 18 years, and (4) no final diagnosis of MI
123 at discharge.

124 **Ethics approval**

125 This study was approved by the Institutional Review Board (IRB) of Korea
126 University Guro Hospital (KUGH, #2016GR0740) and was conducted in accordance with the
127 principles of the Declaration of Helsinki.

128 **AP measurement**

129 Hourly AP concentrations were provided by the Korean Ministry of Environment
130 (<http://www.airkorea.or.kr>). In 2001, 329 monitoring stations nationwide began measuring
131 the concentration of air pollutants. Measurement of air pollutants involved the β -ray
132 absorption method for particulate matter (PM) 10 μm or less in diameter (PM_{10}), the non-
133 dispersive infrared method for carbon monoxide (CO), the pulse ultraviolet fluorescence
134 method for sulfur dioxide (SO_2), the chemiluminescence method for nitric dioxide (NO_2), and
135 the ultraviolet photometric method for ozone (O_3). The concentration measurement of PM 2.5
136 μm or less in diameter ($\text{PM}_{2.5}$) began in January 2015; therefore, annual average

137 concentration values were not available during the patient enrollment period (2006–2015)
138 and was excluded.

139 We transformed collected data into the daily average value, and then, the annual
140 average value of air pollutants before the symptom day was calculated the way previous
141 research was performed.¹³ Each monitoring station was matched by the closest distance in a
142 straight line to 68 hospitals registered in KAMIR to measure individual exposure
143 concentration of air pollutants. Monitoring stations were selected based on hospital admission
144 addresses for the following reasons: (1) Patient addresses were not included in the
145 multicenter registry data. (2) As AMI is an emergency, it is assumed that the patient was
146 admitted to an emergency room close to the workplace and residence at the time of symptom
147 onset. If a pollutant measurement was missed due to a connection error with a monitoring
148 station, the measurement of the next-nearest monitoring station was assigned. Symptom date
149 was defined as the first occurrence of MI-related symptoms such as chest pain or dyspnea.

150 **Study Definitions**

151 The diagnosis of AMI was defined as an elevation in cardiac biomarkers (creatinine
152 kinase-MB, and troponin I, or T) with typical changes on 12 leads electrocardiogram (ECG)
153 or clinical symptoms. STEMI was diagnosed as a new ST-elevation segment measuring ≥ 1
154 mm from ≥ 2 contiguous leads on ECG. Patients with positive cardiac biomarkers but without
155 ECG findings of STEMI were defined as NSTEMI. Cardiogenic shock was defined as a
156 systolic blood pressure < 90 mmHg for > 30 min, the need for supportive management to
157 maintain systolic blood pressure > 90 mmHg, and clinical signs of pulmonary congestion.

158 Individual cardiovascular risk factors, including hypertension (HTN), dyslipidemia
159 (DL), diabetes mellitus (DM), prior cardiovascular disease, heart failure (HF), prior
160 cerebrovascular disease (CVA), and smoking history, were based on self reports by the
161 patient.

162 **Statistical Analysis**

163 All statistical analyses were performed using R version 4.1.2. (R Core Team, 2021; R:
164 Language and Environment for Statistical Computing; R Foundation for Statistical
165 Computing, Vienna, Austria, URL: <https://www.R-project.org/>).

166 We compared the clinical and angiographic characteristics using a X^2 test or Fisher's
167 exact test for categorical variables and Student's t-test or Mann-Whitney rank test for
168 continuous variables. Categorical data were expressed as percentages, and continuous
169 variables were described as mean \pm standard deviation.

170 We used generalized logistic mixed effect models with a random effect term for
171 hospitals to examine the associations of each air pollutant with the incidence rate of STEMI
172 and cardiogenic shock complication rates, and to account for hospital and regional effects
173 such as accessibility and treatment plans. Using a multivariable model, we adjusted for
174 potential confounding factors including: age, sex, body mass index (BMI), smoking status,
175 HTN, DM, DL, stroke, HF, previous IHD, and symptom date. STEMI status, percutaneous
176 coronary intervention (PCI), and left ventricular ejection fraction (LVEF), were used to
177 analyze the incidence of cardiogenic shock complications.

178 In the subgroup analysis, several stratified analyses were performed to test the
179 potential effect modifications of the following factors, by including an interaction term: for
180 the STEMI group analysis, the following terms were used: age, sex, HTN, DM, DL, CVA,
181 HF, prior IHD, smoking, family history of CAD. In the cardiogenic shock group, STEMI
182 status, PCI, and LVEF were added. The results were presented as adjusted odds ratios (OR)
183 for logistic regression with corresponding 95% confidence intervals (CI). Statistical
184 significance was defined as a p-value < 0.05 .

185

186 **Results**

187 A total of 45,619 patients with AMI were enrolled in our study. Of these, 20,526
188 were patients with NSTEMI and 25,093 were patients with STEMI. In our study population,
189 compared with patients with NSTEMI, patients with STEMI were younger, male, had a
190 higher smoking status, and had fewer underlying chronic diseases, such as DM, HTN, and
191 DL. Moreover, patients with STEMI had more Killip class IV and a low LVEF and those
192 were less likely to have a history of cardiovascular diseases, such as HF, CVA, and previous
193 IHD. Among the angiographic parameters, the STEMI group had more PCI as the initial
194 treatment for MI, lower multivessel coronary artery disease (MVD), and the left main artery
195 as the culprit lesion. The cardiogenic shock complication rate during the index hospitalization
196 was significantly higher in the STEMI group (Table 1). Therefore, we analyzed the link
197 between cardiogenic shock events, which are severe cardiovascular complications, and
198 annual AP exposure (Table 4).

199 In Table 2, we observed the median value of annual average concentrations was
200 0.049 part per million (ppm) for SO₂, 0.6088 ppm for CO, 0.0211 ppm for O₃, 0.0259 ppm
201 for NO₂, and 50.53 µg/m³ for PM₁₀.

202 In the Spearman rank correlation analysis using the average annual concentrations
203 after the symptom date, most air pollutants showed a positive correlation ($r = 0.178-0.467$);
204 however, O₃, and other air pollutants, showed a negative correlation ($r = -0.265-0.609$;
205 Figure 2).

206 After mixed-effect regression model analysis, no difference was observed for most
207 air pollutants except PM₁₀, which was associated with increased incidence of STEMI
208 compared with NSTEMI for each 1 µg/m³ increase (odds ratio [OR]:1.009, 95% Confidence
209 Interval [CI]: 1.002–1.016; $p=0.012$; Table 3). For in-hospital cardiogenic shock
210 complication, each 1 µg/m³ increase of PM₁₀ and each 1 part per billion (ppb) increase of
211 SO₂ were associated with increased risk: PM₁₀ (OR:1.033, 95% CI: 1.018–1.050; $p<0.001$),

212 SO₂ (OR:1.104, 95% CI: 1.006–1.212; p=0.037), respectively. In contrast, for each 1 ppb
213 increase in O₃ was negatively correlated with cardiogenic shock (OR, 0.891; 95% CI:0.857–
214 0.928; p<0.001; Table 4).

215 When STEMI and each air pollutant were analyzed in subgroups, the results showed
216 there was a significant association with a decrease in STEMI incidence for every 1 ppb
217 increase of NO₂ in CVA patients. In the absence of HTN, there was an increase in STEMI
218 incidence for every 1 µg/m³ increase PM₁₀ (Figure S1–5). In subgroup analyses used to
219 evaluate the risk of cardiogenic shock with AP exposure, it is shown that there was a
220 significant association between increasing cardiogenic shock complication rate and for each 1
221 ppb increase of NO₂ in patients with no history of PCI, for each 1 µg/m³ increase of PM₁₀ in
222 patients with prior IHD or without PCI treatment, and for each 1 ppb increase in SO₂ with HF
223 patients or prior IHD (Figure S6–10).

224 **Discussion**

225 We performed a large registry-based analysis to evaluate the association between
226 long-term exposure to AP. In this study, using a nationwide prospective clinical registry, we
227 found that increased concentrations of AP increased the risk of STEMI compared with that of
228 NSTEMI and increased the risk of cardiogenic shock complication, which is related to overall
229 mortality. The results of this study showed that long-term exposure to high levels of PM₁₀ is
230 associated with an increased risk of STEMI. Moreover, this study demonstrates that PM₁₀ and
231 SO₂ may impact on the development of cardiogenic shock complication in patients with AMI.

232 Air pollutants comprise complex mixtures that are compounded with gases, including
233 SO₂, NO₂, CO, O₃, and PM, including PM₁₀ and PM_{2.5}.¹⁵ Although it may intuitively seem
234 that AP poses a health risk mostly in the form of respiratory disease, many epidemiological
235 and clinical studies have suggested that the majority of the adverse effects of AP are

236 associated with the cardiovascular system.¹⁶⁻¹⁸ Previous studies demonstrated that AP exposure
237 is associated with endothelial injury and inflammation, indicating that it can trigger
238 cardiovascular events.¹⁹⁻²¹

239 Regarding the association between AP and CVD, many studies have demonstrated
240 that short-term exposure to AP increases the incidence of an acute coronary syndrome
241 (ACS).²²⁻²⁴ In contrast, the present study investigated the effects of long-term exposure to AP,
242 which was the major novelty of our research. The number of studies on the long-term effects
243 of AP exposure are increasing. The ESCAPE (European Study of Cohorts for Air Pollution
244 Effects) study, the increase in PM₁₀ and PM_{2.5} during the long-term follow-up period
245 increases the risk of ACS.²⁵ However, these studies mainly focus on mortality or overall
246 clinical outcome.^{17, 25-27} Researchers have rarely compared the risk of developing STEMI
247 with that of NSTEMI. To the best of our knowledge, this is the first study to demonstrate a
248 long-term association between AP exposure and the relative incidence of STEMI compared
249 with that of NSTEMI in the Asia-Pacific region.

250 Our present study was shown that the risk of developing STEMI increased compared to
251 NSTEMI according to the 1-year average PM₁₀ concentration before symptom onset. These
252 results indicate that STEMI contributes more than NSTEMI to an increased risk of MI
253 according to the AP concentration. Studies on short-term exposure have reported that
254 elevated AP exposure highly triggers the development of STEMI compared with that of
255 NSTEMI.^{28,29} However, some studies have also reported greater incidence of NSTEMI than
256 that of STEMI due to AP exposure³⁰. The inconsistent results can be attributed to differences
257 in exposure periods, geographic location, pollutant concentration level, study population, and
258 statistical methods used for analysis.^{8, 10}

259 In addition, this study is meaningful in that we clarified the effect of AP exposure on the
260 risk of severe complications of cardiogenic shock. Our main findings showed that an

261 increased AP concentration was associated with an increase incidence of cardiogenic shock
262 complication. Cardiogenic shock occurs in approximately 5–13% of AMI patients.³¹
263 Moreover, AMI itself was an important etiology contributing to 80% incidences of
264 cardiogenic shock.³² Cardiogenic shock is associated with poor prognosis for high rate of
265 adverse events even with appropriate treatment, with an in-hospital mortality of 20–40% and
266 a 1-year mortality rate of up to 50%.³¹

267 Although the pathophysiology of cardiogenic shock is not fully understood, it is known
268 that the systemic inflammatory response, release of inflammatory cytokines, and increase in
269 the concentration of nitric oxide (NO) are involved in inappropriate vasodilation after
270 peripheral vascular constriction to compensate for the reduction in myocardial contractility.³³
271 ³⁴ Exposure to AP is related to oxidative stress and systemic inflammation^{14, 16-18} and it
272 adversely affects vascular homeostasis through the production of superoxide and the
273 uncoupling of NO synthase.³⁵ These results add evidence for the development of cardiogenic
274 shock and its subsequent poor prognosis.

275 In our previously published study, the 1-year average AP concentration before the
276 onset of symptoms was associated with an increase in 30-day short-term mortality.¹³ Studies
277 using the same registry reported that in the STEMI group, there was a higher incidence of
278 short-term mortality and cardiogenic shock compared with the incidence found in the
279 NSTEMI group, which is highly correlated with an increase in the risk of cardiac death.^{31, 36}
280 This study strongly suggests that reducing exposure to high concentrations of AP, not only in
281 the high-risk group but also in the low-risk group of AMI, is necessary to reduce the
282 occurrence of potential MI and mortality, even if STEMI appears to be relatively safe
283 because of its younger age and lower co-morbidity rates than NSTEMI. These efforts should
284 be accompanied by policy strategies and clinical practice .

285 This study has several limitations. First, because of the limited sampling data
286 available for PM_{2.5}, the associations with clinical events may have been relatively low.
287 Exposure data for PM_{2.5}, were available for only one year, 2015, the last year of this research
288 period. Evidence suggests that PM size is related to cardiovascular morbidity and mortality.²⁷,
289 ³⁷ Further studies with new data are needed to evaluate the impact of PM_{2.5} in AMI patients in
290 the future with our KAMIR data with later than 2015 registry database. Second, because the
291 patients' addresses were not available, the direct exposure level determined for the patients
292 could be incorrect. It was assumed that patients were admitted to a nearby emergency room at
293 the time of symptom onset. However, some patients who visited other local hospitals or were
294 transferred may have been misclassified, requiring careful interpretation of the results. Third,
295 because of the limitations of the study design, although confounding factors were adjusted for,
296 the results for residential addresses and socioeconomic variables should be carefully
297 considered. We aimed to assess adjusted adequate variables which could be potentially
298 relevant factors using a multivariable model. Finally, although data used in this research were
299 collected by the attending hospitals well-trained, multicenter registry is need to interpret with
300 consideration for several characteristics such as a gap among each hospitals and data such as
301 input errors and misclassification.

302 In conclusion, we observed that high concentration of air pollutants, particularly of
303 PM₁₀, which is an environmental risk factor was associated with an increased incidence of
304 STEMI. Moreover, PM₁₀ and SO₂ levels were risk factors for in-hospital cardiogenic shock
305 complication after MI. This study emphasizes on the need of developing a policy-level
306 strategy and clinical efforts to reduce AP exposure and prevent the incidence of STEMI and
307 severe cardiovascular complications.

308

309 **Reference**

- 310 1. Diseases GBD, Injuries C. Global burden of 369 diseases and injuries in 204 countries
311 and territories, 1990-2019: A systematic analysis for the global burden of disease
312 study 2019. *Lancet*. 2020;396:1204-1222
- 313 2. Roth GA, Mensah GA, Johnson CO, Addolorato G, Ammirati E, Baddour LM, et al.
314 Global burden of cardiovascular diseases and risk factors, 1990-2019: Update from
315 the gbd 2019 study. *J Am Coll Cardiol*. 2020;76:2982-3021
- 316 3. Zhao D. Epidemiological features of cardiovascular disease in asia. *JACC Asia*.
317 2021;1:1-13
- 318 4. World Health Organization. Regional Office for the Western P. *Health at a glance :*
319 *Asia/pacific 2014 : Measuring progress towards universal health coverage*. Paris:
320 OECD Publishing; 2014.
- 321 5. von Klot S, Peters A, Aalto P, Bellander T, Berglind N, D'Ippoliti D, et al. Ambient
322 air pollution is associated with increased risk of hospital cardiac readmissions of
323 myocardial infarction survivors in five european cities. *Circulation*. 2005;112:3073-
324 3079
- 325 6. Warburton DER, Bredin SSD, Shellington EM, Cole C, de Faye A, Harris J, et al. A
326 systematic review of the short-term health effects of air pollution in persons living
327 with coronary heart disease. *Journal of Clinical Medicine*. 2019;8:274
- 328 7. Shah AS, Langrish JP, Nair H, McAllister DA, Hunter AL, Donaldson K, et al.
329 Global association of air pollution and heart failure: A systematic review and meta-
330 analysis. *Lancet*. 2013;382:1039-1048
- 331 8. Peters A, Dockery DW, Muller JE, Mittleman MA. Increased particulate air pollution
332 and the triggering of myocardial infarction. *Circulation*. 2001;103:2810-2815
- 333 9. Europe WHOROf. *Review of evidence on health aspects of air pollution – revihaap*
334 *project: Technical report*. Copenhagen: WHO Regional Office for Europe
335 © World Health Organization 2013.; 2013.
- 336 10. Pope CA, 3rd, Muhlestein JB, May HT, Renlund DG, Anderson JL, Horne BD.
337 Ischemic heart disease events triggered by short-term exposure to fine particulate air
338 pollution. *Circulation*. 2006;114:2443-2448
- 339 11. Chen R, Jiang Y, Hu J, Chen H, Li H, Meng X, et al. Hourly air pollutants and acute
340 coronary syndrome onset in 1.29 million patients. *Circulation*. 2022;145:1749-1760
- 341 12. Lee MW, Choi BG, Kim SW, Rha SW, Shim MS, Kim DJ, et al. Air pollution and
342 short-term clinical outcomes of patients with acute myocardial infarction. *Clin Exp*
343 *Pharmacol Physiol*. 2017;44:631-638
- 344 13. Choi SY, Rha SW, Cha J, Byun JK, Choi BG, Jeong MH. Association of air pollution
345 and 1-year clinical outcomes of patients with acute myocardial infarction. *PLoS One*.
346 2022;17:e0272328
- 347 14. Kim JH, Chae SC, Oh DJ, Kim HS, Kim YJ, Ahn Y, et al. Multicenter cohort study of
348 acute myocardial infarction in korea - interim analysis of the korea acute myocardial
349 infarction registry-national institutes of health registry. *Circ J*. 2016;80:1427-1436
- 350 15. Pope Iii CA, Dockery DW. Health effects of fine particulate air pollution: Lines that
351 connect. *Journal of the Air & Waste Management Association (Air & Waste*
352 *Management Association)*. 2006;56:709-742
- 353 16. Brook RD, Rajagopalan S, Pope CA, 3rd, Brook JR, Bhatnagar A, Diez-Roux AV, et
354 al. Particulate matter air pollution and cardiovascular disease: An update to the
355 scientific statement from the american heart association. *Circulation*. 2010;121:2331-
356 2378

- 357 17. Pope CA, 3rd, Burnett RT, Thurston GD, Thun MJ, Calle EE, Krewski D, et al.
358 Cardiovascular mortality and long-term exposure to particulate air pollution:
359 Epidemiological evidence of general pathophysiological pathways of disease.
360 *Circulation*. 2004;109:71-77
- 361 18. Kampa M, Castanas E. Human health effects of air pollution. *Environ Pollut*.
362 2008;151:362-367
- 363 19. Krishnan RM, Adar SD, Szpiro AA, Jorgensen NW, Van Hee VC, Barr RG, et al.
364 Vascular responses to long- and short-term exposure to fine particulate matter: Mesa
365 air (multi-ethnic study of atherosclerosis and air pollution). *J Am Coll Cardiol*.
366 2012;60:2158-2166
- 367 20. Bind MA, Baccarelli A, Zanobetti A, Tarantini L, Suh H, Vokonas P, et al. Air
368 pollution and markers of coagulation, inflammation, and endothelial function:
369 Associations and epigene-environment interactions in an elderly cohort. *Epidemiology*.
370 2012;23:332-340
- 371 21. Pope CA, 3rd, Bhatnagar A, McCracken JP, Abplanalp W, Conklin DJ, O'Toole T.
372 Exposure to fine particulate air pollution is associated with endothelial injury and
373 systemic inflammation. *Circ Res*. 2016;119:1204-1214
- 374 22. Akbarzadeh MA, Khareshi I, Sharifi A, Yousefi N, Naderian M, Namazi MH, et al.
375 The association between exposure to air pollutants including pm(10), pm(2.5), ozone,
376 carbon monoxide, sulfur dioxide, and nitrogen dioxide concentration and the relative
377 risk of developing stemi: A case-crossover design. *Environ Res*. 2018;161:299-303
- 378 23. Mustafic H, Jabre P, Caussin C, Murad MH, Escolano S, Tafflet M, et al. Main air
379 pollutants and myocardial infarction: A systematic review and meta-analysis. *Jama*.
380 2012;307:713-721
- 381 24. Nuvolone D, Balzi D, Chini M, Scala D, Giovannini F, Barchielli A. Short-term
382 association between ambient air pollution and risk of hospitalization for acute
383 myocardial infarction: Results of the cardiovascular risk and air pollution in tuscany
384 (riscat) study. *Am J Epidemiol*. 2011;174:63-71
- 385 25. Cesaroni G, Forastiere F, Stafoggia M, Andersen ZJ, Badaloni C, Beelen R, et al.
386 Long term exposure to ambient air pollution and incidence of acute coronary events:
387 Prospective cohort study and meta-analysis in 11 european cohorts from the escape
388 project. *BMJ*. 2014;348:f7412
- 389 26. Tonne C, Wilkinson P. Long-term exposure to air pollution is associated with survival
390 following acute coronary syndrome. *Eur Heart J*. 2013;34:1306-1311
- 391 27. Miller KA, Siscovick DS, Sheppard L, Shepherd K, Sullivan JH, Anderson GL, et al.
392 Long-term exposure to air pollution and incidence of cardiovascular events in women.
393 *N Engl J Med*. 2007;356:447-458
- 394 28. Pope CA, Muhlestein JB, Anderson JL, Cannon JB, Hales NM, Meredith KG, et al.
395 Short-term exposure to fine particulate matter air pollution is preferentially associated
396 with the risk of st-segment elevation acute coronary events. *J Am Heart Assoc*. 2015;4
- 397 29. Gardner B, Ling F, Hopke PK, Frampton MW, Utell MJ, Zareba W, et al. Ambient
398 fine particulate air pollution triggers st-elevation myocardial infarction, but not non-st
399 elevation myocardial infarction: A case-crossover study. *Part Fibre Toxicol*.
400 2014;11:1
- 401 30. Ho AFW, Zheng H, Earnest A, Cheong KH, Pek PP, Seok JY, et al. Time-stratified
402 case crossover study of the association of outdoor ambient air pollution with the risk
403 of acute myocardial infarction in the context of seasonal exposure to the southeast
404 asian haze problem. *J Am Heart Assoc*. 2019;8:e011272

- 405 31. Backhaus T, Fach A, Schmucker J, Fiehn E, Garstka D, Stehmeier J, et al.
406 Management and predictors of outcome in unselected patients with cardiogenic shock
407 complicating acute st-segment elevation myocardial infarction: Results from the
408 bremen stemi registry. *Clin Res Cardiol.* 2018;107:371-379
- 409 32. Harjola VP, Lassus J, Sionis A, Køber L, Tarvasmäki T, Spinar J, et al. Clinical
410 picture and risk prediction of short-term mortality in cardiogenic shock. *Eur J Heart*
411 *Fail.* 2015;17:501-509
- 412 33. Vahdatpour C, Collins D, Goldberg S. Cardiogenic shock. *Journal of the American*
413 *Heart Association.* 2019;8:e011991
- 414 34. Diepen Sv, Katz JN, Albert NM, Henry TD, Jacobs AK, Kapur NK, et al.
415 Contemporary management of cardiogenic shock: A scientific statement from the
416 american heart association. *Circulation.* 2017;136:e232-e268
- 417 35. Cherng TW, Paffett ML, Jackson-Weaver O, Campen MJ, Walker BR, Kanagy NL.
418 Mechanisms of diesel-induced endothelial nitric oxide synthase dysfunction in
419 coronary arterioles. *Environmental Health Perspectives.* 2011;119:98-103
- 420 36. Park HW, Yoon CH, Kang SH, Choi DJ, Kim HS, Cho MC, et al. Early- and late-
421 term clinical outcome and their predictors in patients with st-segment elevation
422 myocardial infarction and non-st-segment elevation myocardial infarction. *Int J*
423 *Cardiol.* 2013;169:254-261
- 424 37. Crouse DL, Peters PA, van Donkelaar A, Goldberg MS, Villeneuve PJ, Brion O, et al.
425 Risk of nonaccidental and cardiovascular mortality in relation to long-term exposure
426 to low concentrations of fine particulate matter: A canadian national-level cohort
427 study. *Environ Health Perspect.* 2012;120:708-714
428

429 **Acknowledgements**

430 This study was done with the support of Korean Circulation Society (KCS) to commemorate
431 the 50th Anniversary of KCS. The KAMIR study group of the KSC was as follows: Korea
432 University Guro Hospital, Seoul, Korea (Seung-Woon Rha), Gachon University Gil Medical
433 Center, Incheon, Korea (Tae Hoon Ahn), Wonju Severance Christian Hospital, Wonju, Korea
434 (Junghan Yoon), Seoul National University Hospital, Seoul, Korea (Hyo-Soo Kim), Seoul St.
435 Mary's Hospital, Seoul, Korea (Ki-Bae Seung), Samsung Medical Center, Seoul, Korea
436 (Hyeon-Cheol Gwon), Kyungpook National University Hospital, Daegu, Korea (Shung Chull
437 Chae), Kyung Hee University Hospital at Gangdong, Seoul, Korea (Chong-Jin Kim), Pusan
438 National University Hospital, Busan, Korea (Kwang Soo Cha), Yeungnam University
439 Medical Center, Daegu, Korea (Jung-Hee Lee), Jeonbuk National University Hospital, Jeonju,
440 Korea (Jei Keon Chae), Jeju National University Hospital, Jeju, Korea (Seung-Jae Joo), Seoul
441 National University Bundang Hospital, Seongnam, Korea (Chang-Hwan Yoon), Keimyung
442 University Dongsan Medical Center, Daegu, Korea (Seung-Ho Hur), Chungnam National
443 University Hospital, Daejeon, Korea (In-Whan Seong), Chungbuk National University
444 Hospital, Cheongju, Korea (Kyung-Kuk Hwang), Inje University Haeundae Paik Hospital,
445 Busan, Korea (Doo-Il Kim), Wonkwang University Hospital, Iksan, Korea (Seok Kyu Oh),
446 Gyeongsang National University Hospital, Jinju, Korea (Jin-Yong Hwang), and Chonnam
447 National University Hospital, Gwangju, Korea (Myung Ho Jeong).

448 **Sources of Funding**

449 This research was supported by grants (2020ER630800 and 2022ER090900) from the Korea
450 Centers for Disease Control and Prevention. (<https://www.kdca.go.kr/>). The funding
451 organization had no role in the design and administration of the study; the collection,

452 management, analysis, and interpretation of the data; the preparation, review, or approval of
453 the manuscript; nor the decision to submit the manuscript for publication.

454 **Disclosures**

455 None.

456 **Supplemental Material**

457 Figures S1–S10

458

459 **Tables**

460 **Table 1.** Baseline characteristics

Variables	Total	NSTEMI (n=20,526)	STEMI (n=25,093)	P value
Age (year)	63.82 ± 12.77	65.10 ± 12.40	62.77 ± 12.97	<0.001
Sex (male)	32,921 (72.2)	14,042 (68.4)	18,879 (75.2)	<0.001
Body Mass Index (kg/m ²)	23.98 ± 3.25	23.94 ± 3.27	24.01 ± 3.23	0.036
Systolic Blood Pressure (mmHg)	129.69 ± 28.25	133.71 ± 27.38	126.37 ± 28.53	<0.001
Diastolic Blood Pressure (mmHg)	78.89 ± 16.66	80.18 ± 15.87	77.82 ± 17.22	<0.001
Heart Rate (bpm)	78.19 ± 19.90	79.70 ± 19.36	76.96 ± 20.25	<0.001
Left Ventricular Ejection Fraction (%)	51.96 ± 11.86	53.51 ± 12.20	50.66 ± 11.41	<0.001
Killip Class 4	2,389 (5.2)	552 (2.7)	1,837 (7.3)	<0.001
Hypertension	22,776 (49.9)	11,203 (54.6)	11,573 (46.1)	<0.001
Diabetes Mellitus	12,596 (27.6)	6,418 (31.3)	6,178 (24.6)	<0.001
Dyslipidemia	5,082 (11.1)	2,571 (12.5)	2,511 (10.0)	<0.001
Cerebrovascular Disease	3,030 (6.6)	1,659 (8.1)	1,371 (5.5)	<0.001
Heart Failure	842 (1.8)	582 (2.8)	260 (1.0)	<0.001
Smoking History	26,337 (57.7)	11,077 (54.0)	15,260 (60.8)	<0.001
Current Smoker	18,853 (41.3)	7,276 (35.4)	11,577 (46.1)	<0.001
Family History of Heart Disease	3,285 (7.2)	1,501 (7.3)	1,784 (7.1)	0.404
Previous Ischemic Heart Disease	7,027 (15.4)	4,150 (20.2)	2,877 (11.5)	<0.001
Previous PCI	3,346 (7.3)	1,968 (9.6)	1,378 (5.5)	<0.001
Previous MI	2,164 (4.7)	1,265 (6.2)	899 (3.6)	<0.001
Previous CABG	371 (0.8)	268 (1.3)	103 (0.4)	<0.001
Previous Angina	2,793 (6.1)	1,733 (8.4)	1,060 (4.2)	<0.001
Initial treatment of MI				
Thrombolysis	990 (2.2)	0 (0.0)	990 (3.9)	<0.001
CABG	933 (2.0)	556 (2.7)	377 (1.5)	<0.001
PCI	39,847 (87.3)	16,329 (79.6)	23,518 (93.7)	<0.001
Multi-Vessel Disease	21,542 (47.2)	9,942 (48.4)	11,600 (46.2)	<0.001
Left Main Disease	1,661 (3.6)	957 (4.7)	704 (2.8)	<0.001
Infarct-related artery				
Left Main	886 (1.9)	522 (2.5)	364 (1.5)	<0.001
Left Anterior Descending Artery	18,963 (41.6)	6,987 (34.0)	11,976 (47.7)	<0.001
Left Circumflex Artery	6,849 (15.0)	4,596 (22.4)	2,253 (9.0)	<0.001
Right Coronary Artery	13,489 (29.6)	4,719 (23.0)	8,770 (34.9)	<0.001
Cardiogenic Shock Complications	2,317 (5.1)	554 (2.7)	1,763 (7.0)	<0.001

461 Data is expressed as number (percentage), mean ± standard deviation.

462 CABG, coronary artery bypass grafting; NSTEMI, non-ST-elevation myocardial infarction;

463 PCI, percutaneous coronary intervention; MI, myocardial infarction; STEMI, ST-elevation

464 myocardial infarction

465

466 **Table 2.** Distribution for annual average air pollution concentration before symptom date.

	SO ₂ (ppm)	CO (ppm)	O ₃ (ppm)	NO ₂ (ppm)	PM ₁₀ (µg/m ³)
Min.	0.0014	0.2028	0.0037	0.0070	18.25
Q1	0.0041	0.5312	0.0176	0.0218	44.65
Median	0.0049	0.6088	0.0211	0.0259	50.53
Q3	0.0061	0.7211	0.0244	0.0342	58.67
Max.	0.0136	1.4976	0.0437	0.0812	99.14
IQR	0.0020	0.1899	0.0068	0.0124	14.02
Mean	0.0053	0.6276	0.0210	0.0284	52.57

467 CO, carbon monoxide; IQR, interquartile range; NO₂, nitric dioxide; O₃, ozone; PM₁₀,
 468 particulate matter 10 µm or less in diameter; ppm, part per million; Q1, 1st quintile; Q3, 3rd
 469 quintile. SO₂, sulfur dioxide.

470 **Table 3.** Univariate and multivariate regression analysis of the incidence of STEMI
 471 compared with NSTEMI regarding annual average concentration of each air pollutant before
 472 symptom date.
 473

	Univariate		Multivariate	
	OR (95% CI)	<i>P</i> value	OR (95% CI)	<i>P</i> value
SO ₂ (ppb)	1.044 (0.998 - 1.093)	0.060	1.041 (0.995 - 1.089)	0.084
CO (ppm)	1.037 (0.978 - 1.100)	0.225	1.036 (0.977 - 1.099)	0.236
O ₃ (ppb)	0.990 (0.972 - 1.009)	0.293	0.989 (0.971 - 1.007)	0.239
NO ₂ (ppb)	1.000 (0.987 - 1.012)	0.943	0.999 (0.987 - 1.012)	0.914
PM ₁₀ (μg/m ³)	1.008 (1.001 - 1.014)	0.027	1.009 (1.002 - 1.016)	0.012

474 Adjusted for Age, body mass index, diabetes mellitus, dyslipidemia, heart failure,
 475 hypertension, previous ischemic heart disease, sex, smoking status, stroke, symptom onset.
 476 CI, confidence interval; CO, carbon monoxide; NO₂, nitric dioxide; O₃, ozone; OR, odds ratio;
 477 PM₁₀, particulate matter 10 μm or less in diameters; ppb, part per billion; ppm, part per
 478 million; SO₂, sulfur dioxide.
 479

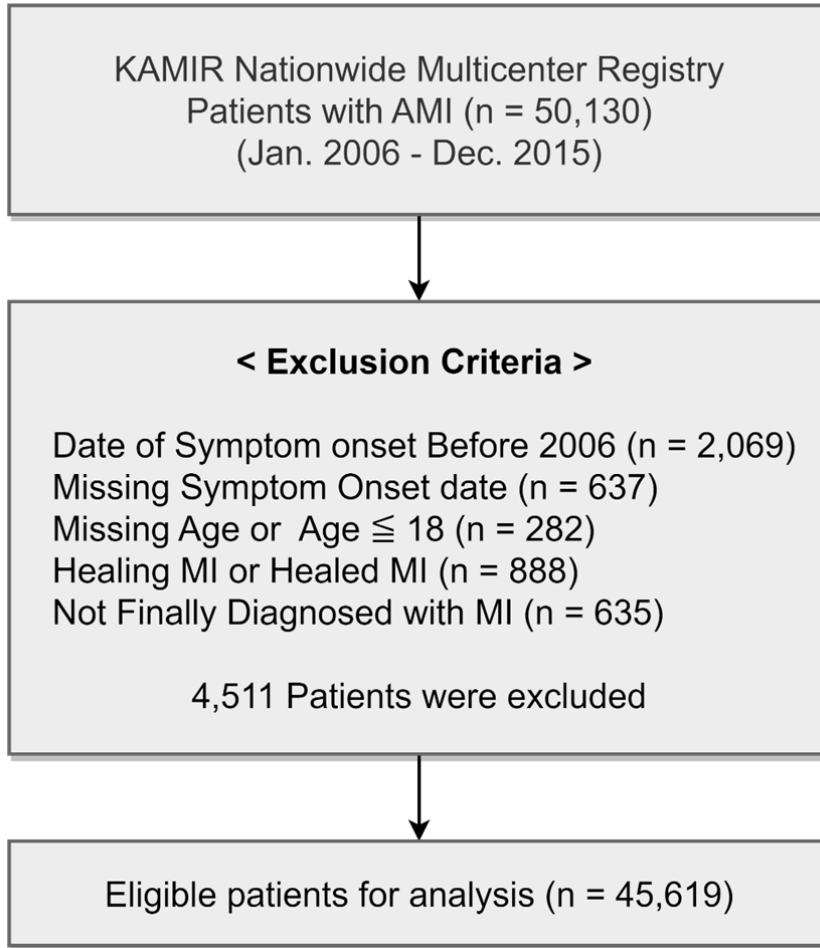
480 **Table 4.** Univariate and multivariate regression analysis between the incidence of
 481 cardiogenic shock events and the annual average concentration of each air pollutant before
 482 the symptom date of myocardial infarction.
 483

	Univariate		Multivariate	
	OR (95% CI)	<i>P</i> value	OR (95% CI)	<i>P</i> value
SO ₂ (ppb)	1.122 (1.021 - 1.234)	0.017	1.104 (1.006 - 1.212)	0.037
CO (ppm)	1.090 (0.960 - 1.238)	0.182	1.076 (0.949 - 1.219)	0.254
O ₃ (ppb)	0.889 (0.853 - 0.926)	<0.001	0.891 (0.857 - 0.928)	<0.001
NO ₂ (ppb)	1.013 (0.985 - 1.041)	0.365	1.015 (0.988 - 1.042)	0.269
PM ₁₀ (μg/m ³)	1.036 (1.019 - 1.053)	<0.001	1.033 (1.018 - 1.050)	<0.001

484 Adjusted for age, body mass index, diabetes mellitus, dyslipidemia, heart failure,
 485 hypertension, left ventricular ejection fraction, percutaneous coronary intervention, previous
 486 ischemic heart disease, sex, smoking status, STEMI status, stroke, and symptom date. CI,
 487 confidence interval; CO, carbon monoxide; NO₂, nitric dioxide; O₃, ozone; OR, odds ratio;
 488 PM₁₀, particulate matter 10 μm or less in diameter; ppb, part per billion; ppm, part per million;
 489 SO₂, sulfur dioxide.
 490

491 **Figures and Figure Legends**

492



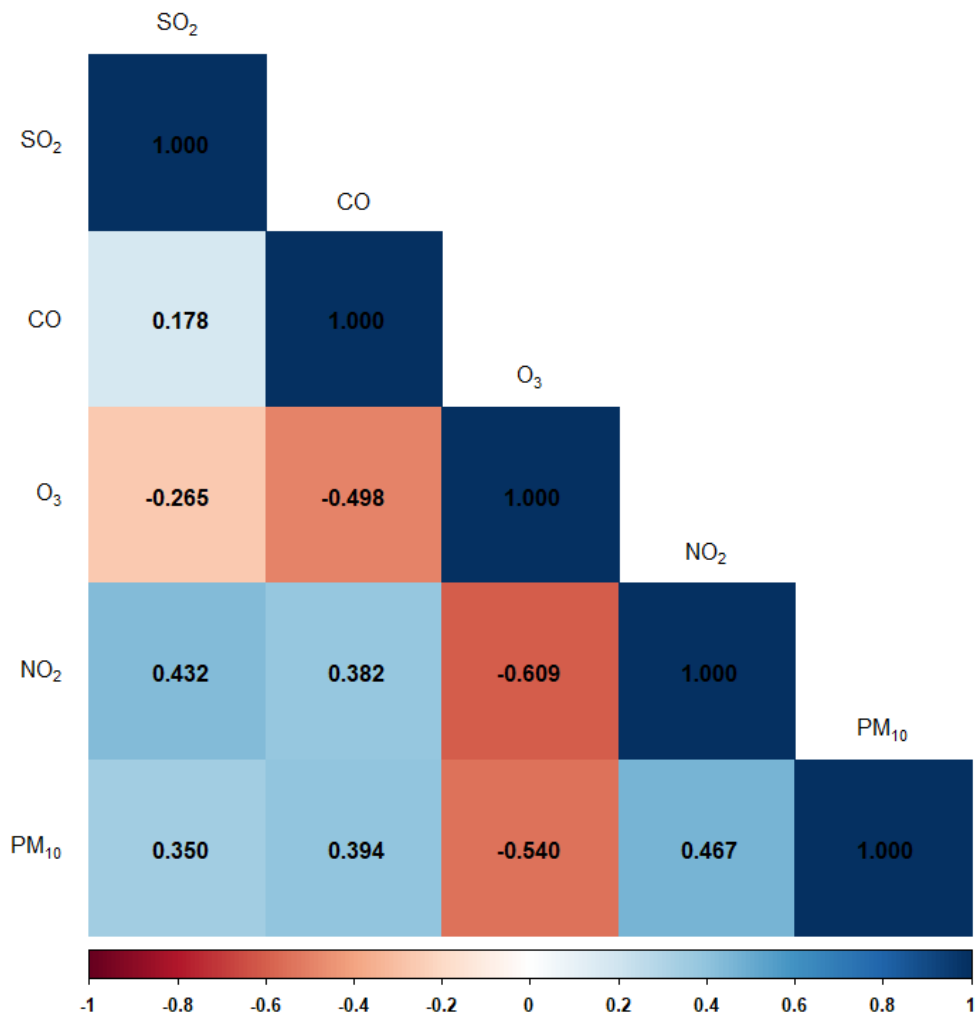
493

494

495

496

Figure 1. Study flow chart of patient enrollment. AMI, acute myocardial infarction; KAMIR, Korea Acute Myocardial Infarction Registry; MI, myocardial infarction

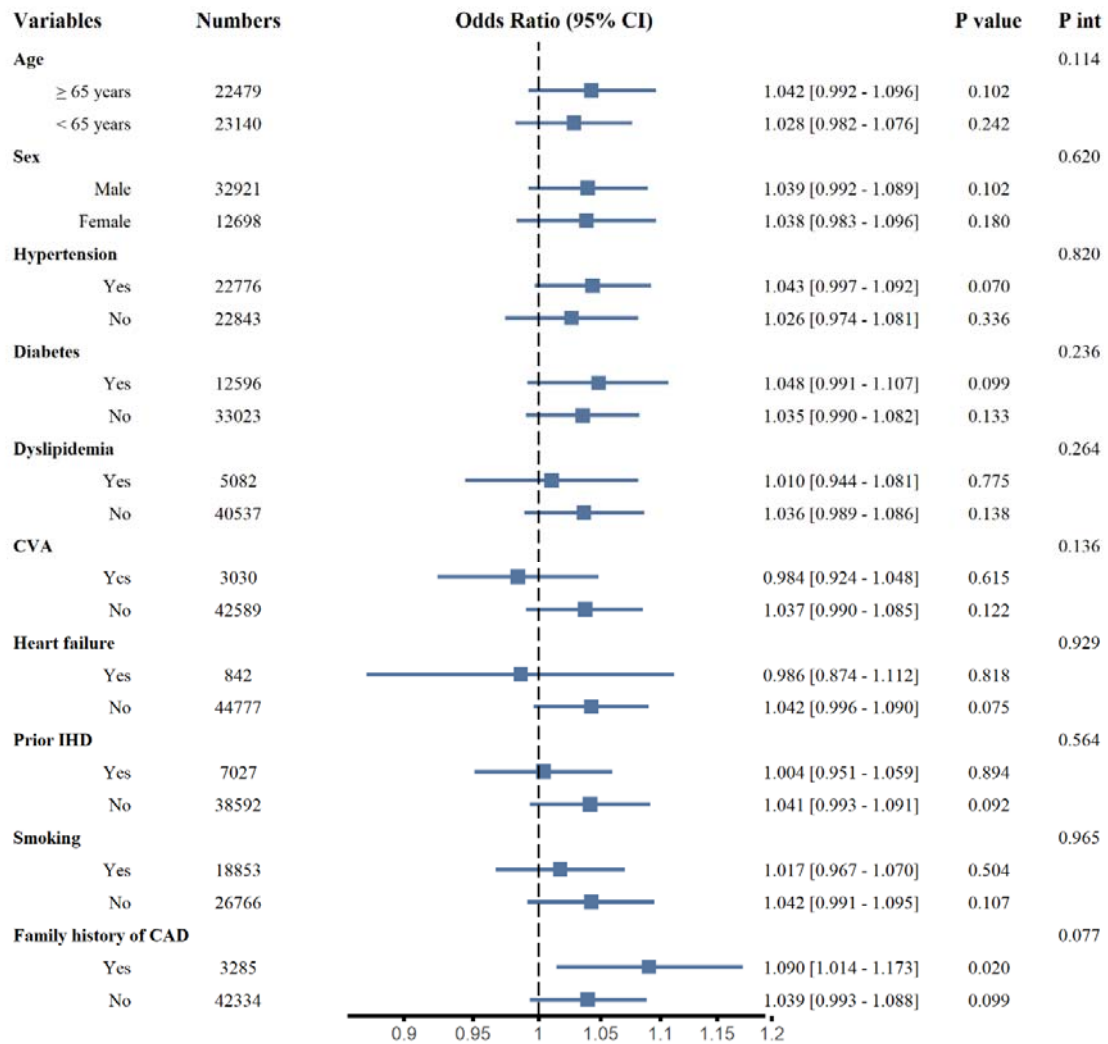


497

498 **Figure 2.** Spearman correlation coefficients for annual average concentrations of air
 499 pollutants. CO, carbon monoxide; NO₂, nitric dioxide; PM₁₀, particulate matter 10 μm or
 500 less in diameter.
 501

502 **Supplemental data**

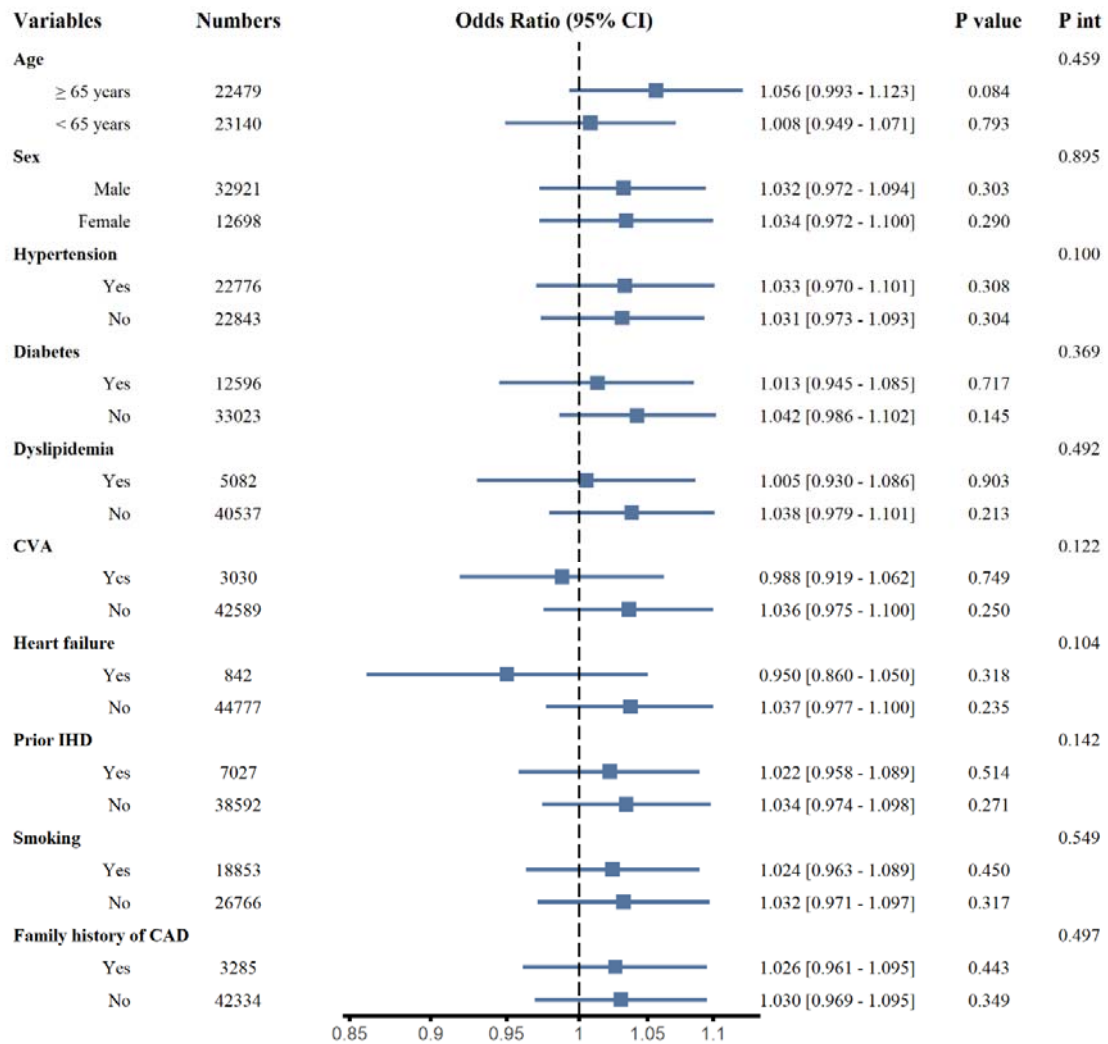
503 **Figure S1.** Subgroup analysis for the adjusted odds ratio and 95% confidence interval of the
 504 incidence of STEMI compared with NSTEMI according to an increase of 1 part per billion
 505 SO₂ before the onset of symptoms.



506

507

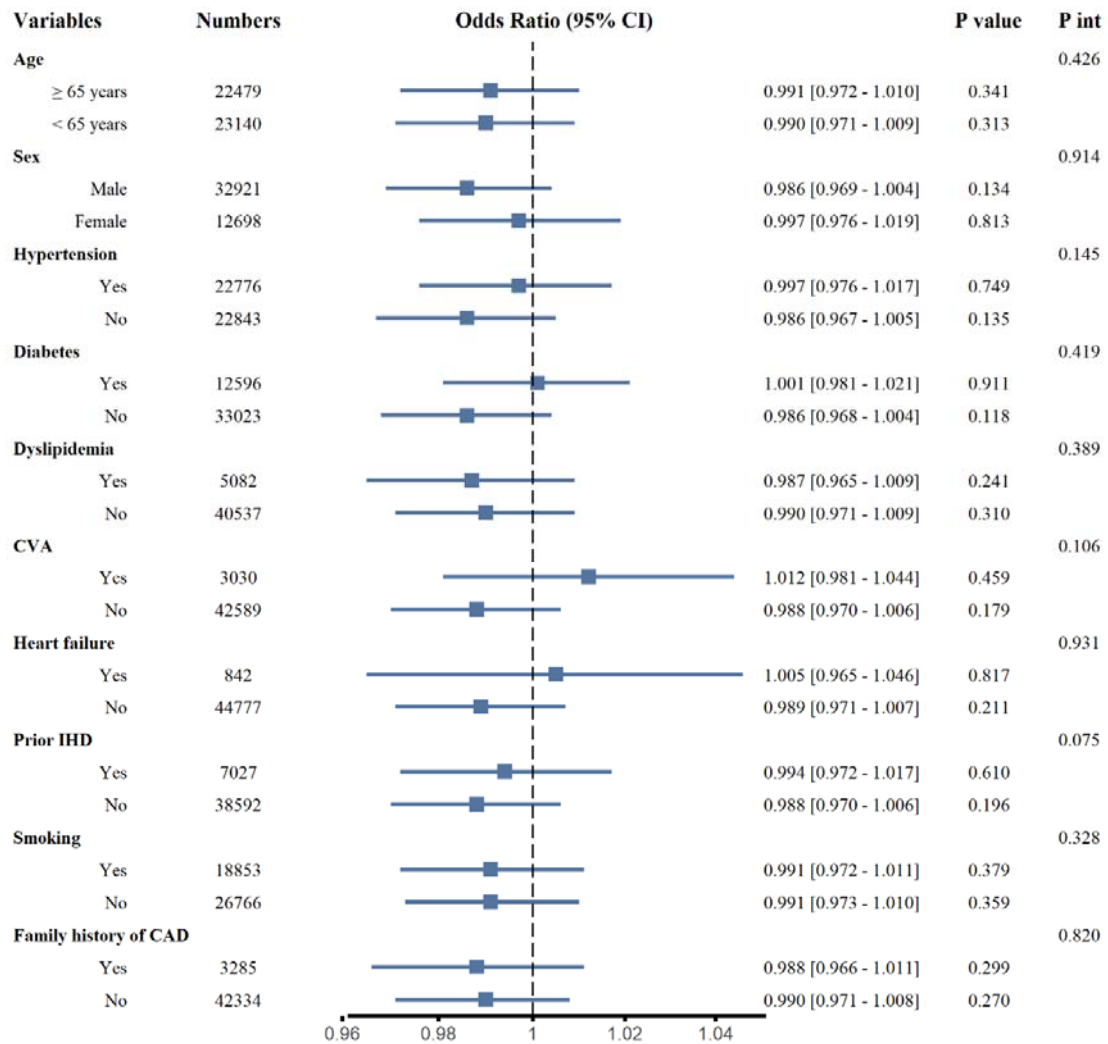
508 **Figure S2.** Subgroup analysis for adjusted odds ratio and 95% confidence interval of the
 509 incidence of STEMI compared with NSTEMI according to an increase of 0.1 part per million
 510 CO



511

512

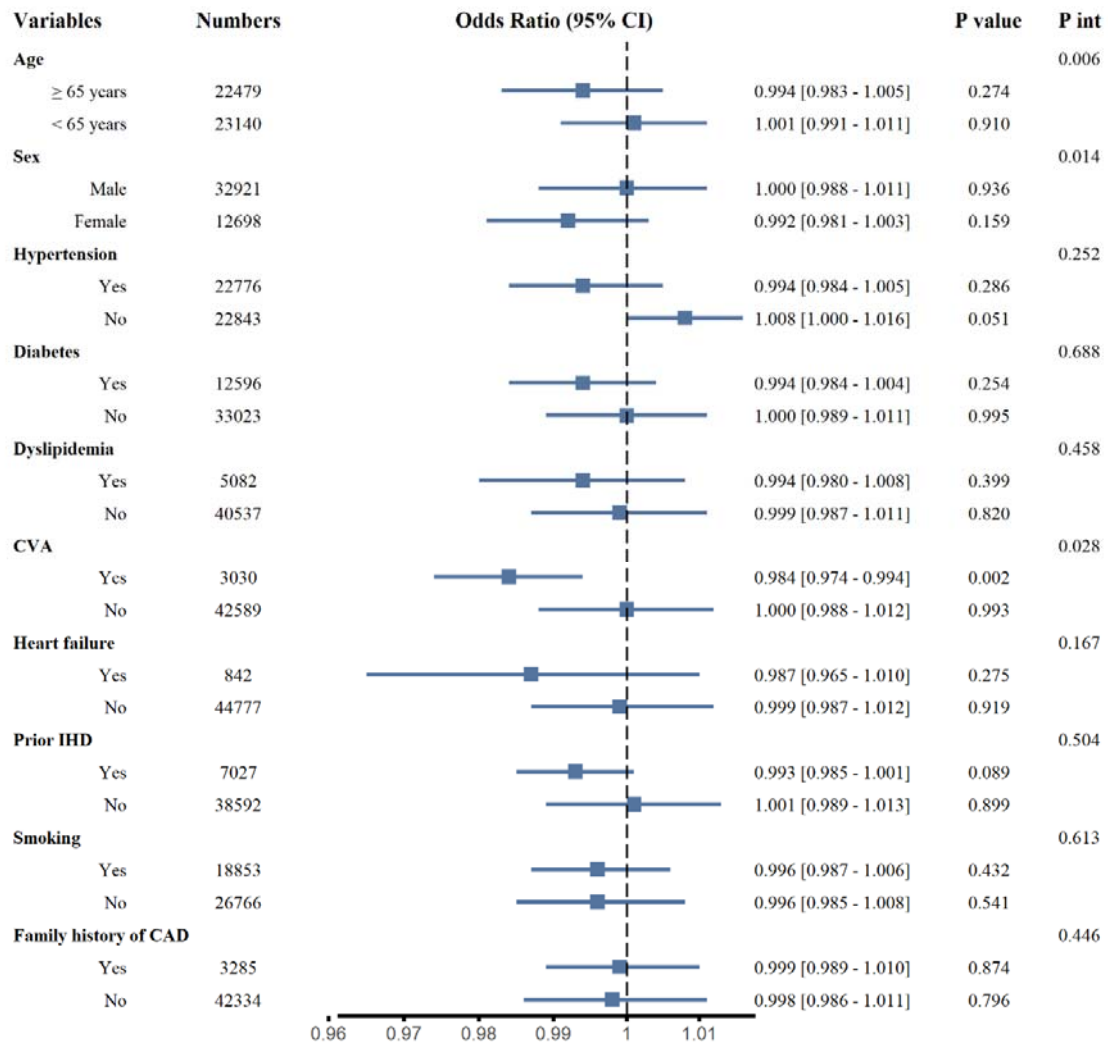
513 **Figure S3.** Subgroup analysis for the adjusted odds ratio and 95% confidence interval of the
 514 incidence of STEMI compared with NSTEMI according to an increase of 1 part per billion
 515 O₃ before the onset of symptoms.



516

517

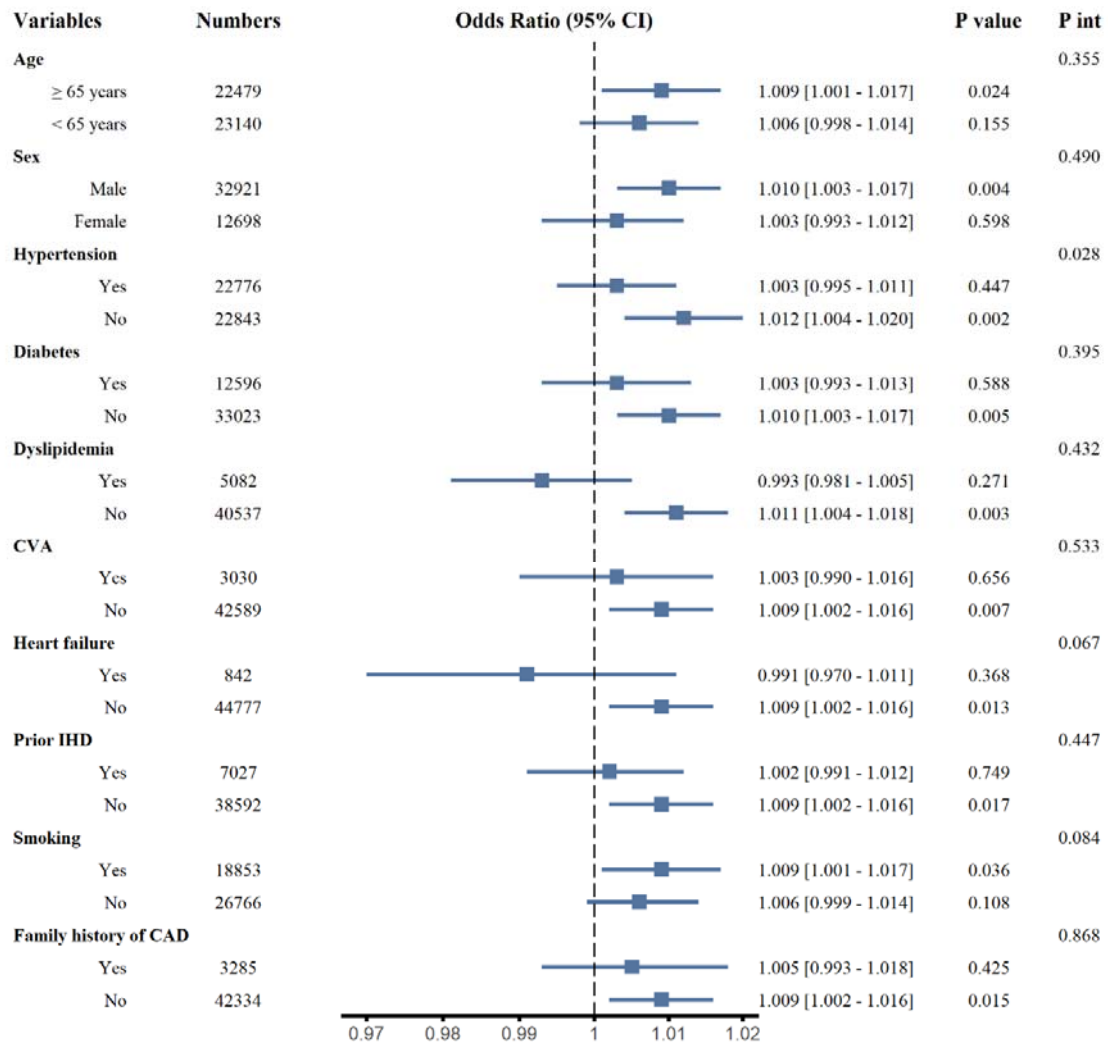
518 **Figure S4.** Subgroup analysis for the adjusted odds ratio and 95% confidence interval of the
 519 incidence of STEMI compared with NSTEMI according to an increase of 1 part per billion
 520 NO₂ before the onset of symptoms.



521

522

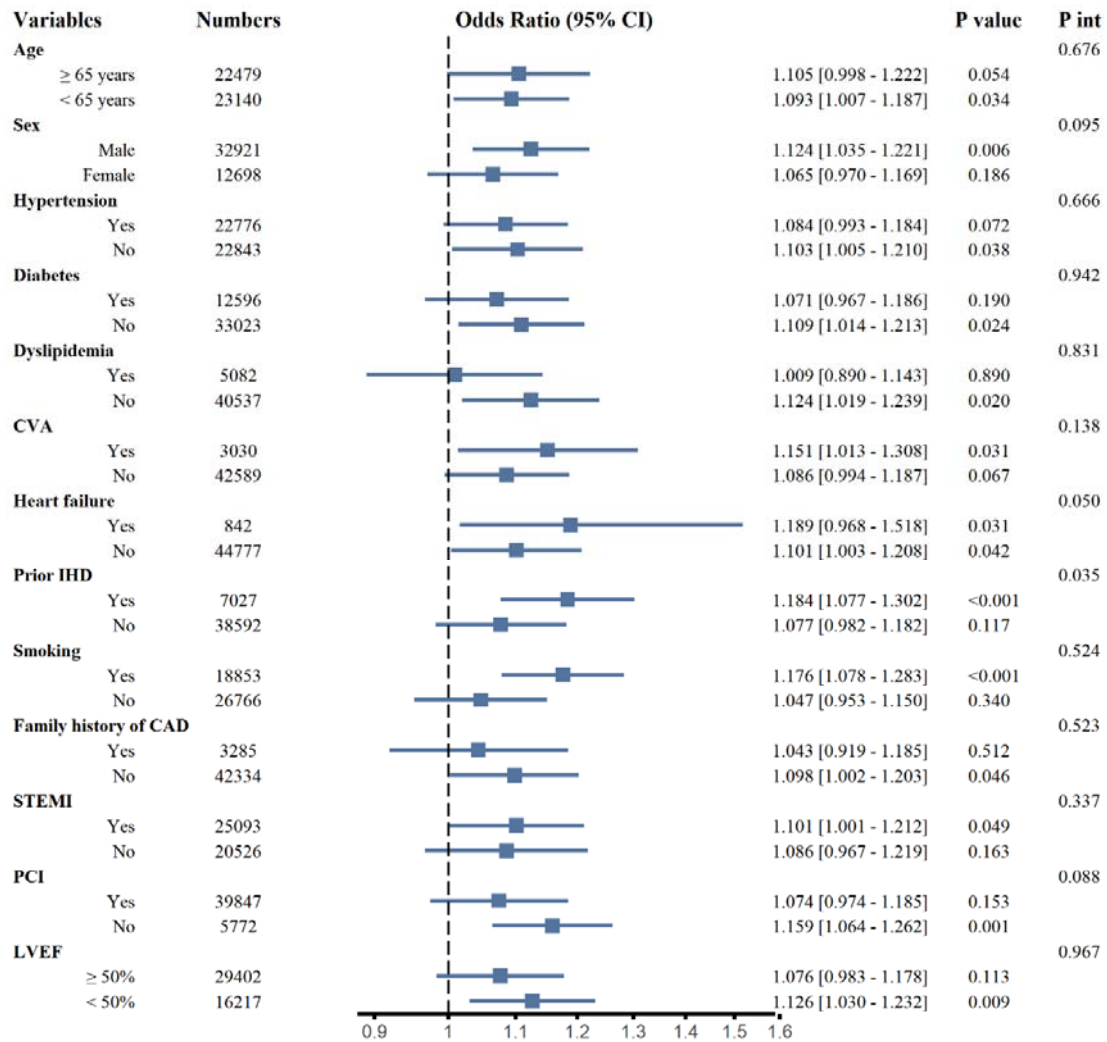
523 **Figure S5.** Subgroup analysis for the adjusted odds ratio and 95% confidence interval of the
 524 incidence of STEMI compared with NSTEMI according to an increase of 1 $\mu\text{g}/\text{m}^3$ PM_{10}
 525 before the the symptom date.



526

527

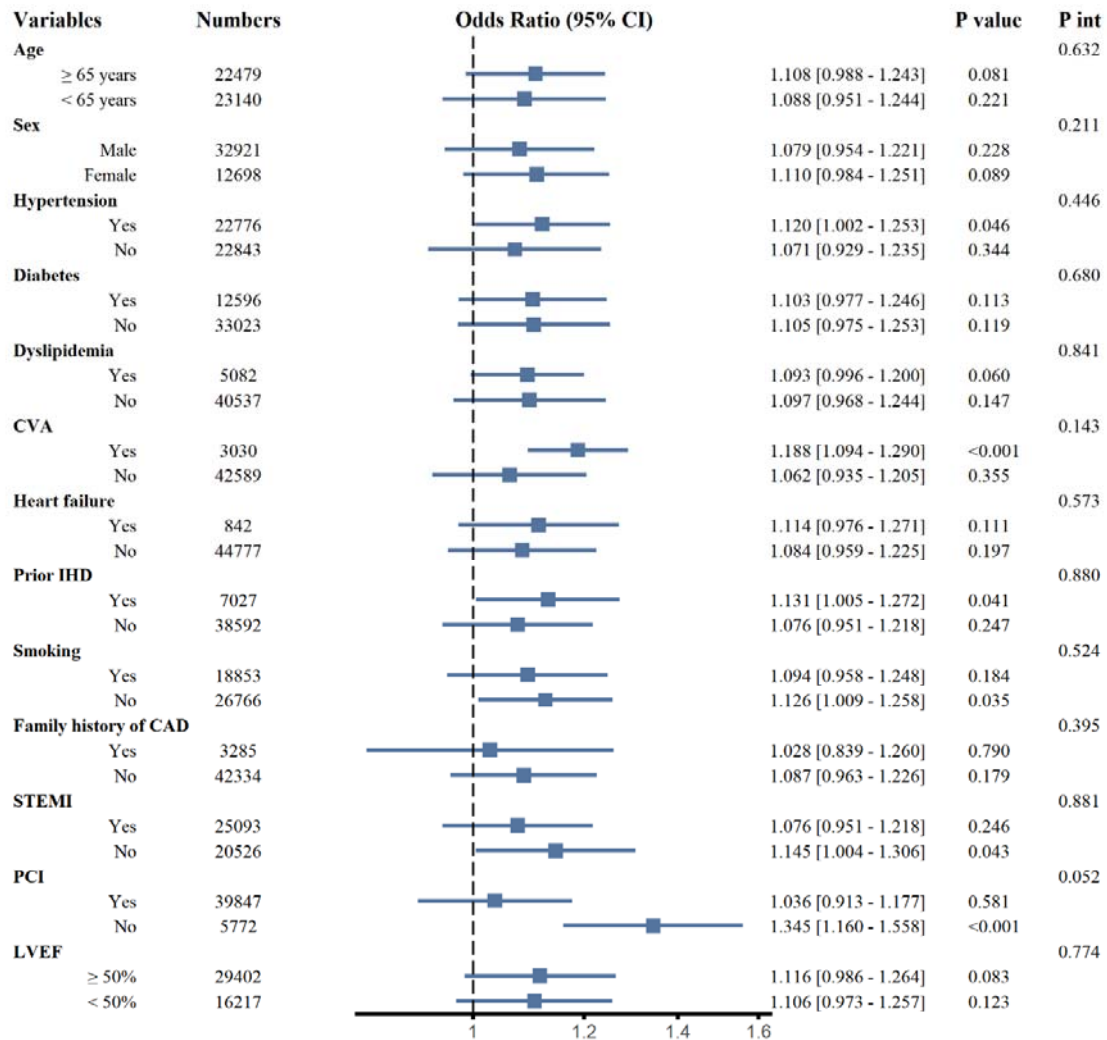
528 **Figure S6.** Subgroup analysis for the adjusted odds ratio and 95% confidence interval of the
 529 incidence of in-hospital cardiogenic shock according to an increase of 1 part per billion SO₂
 530 before symptom onset.



531

532

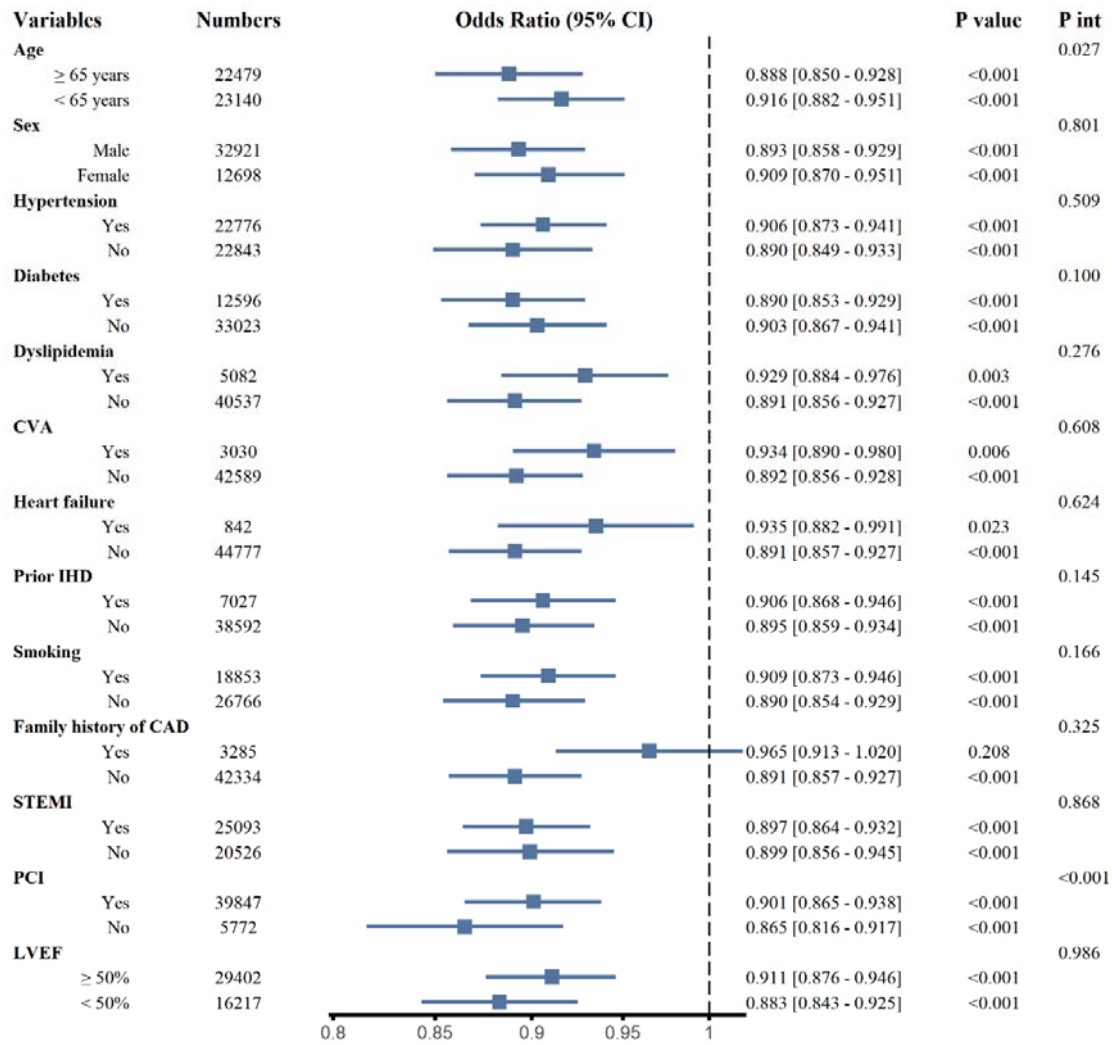
533 **Figure S7.** Subgroup Analysis for adjusted odds ratio and 95% confidence interval of the
 534 incidence of in-hospital cardiogenic shock according to an increase of 0.1 part per million CO
 535 before symptom date.



536

537

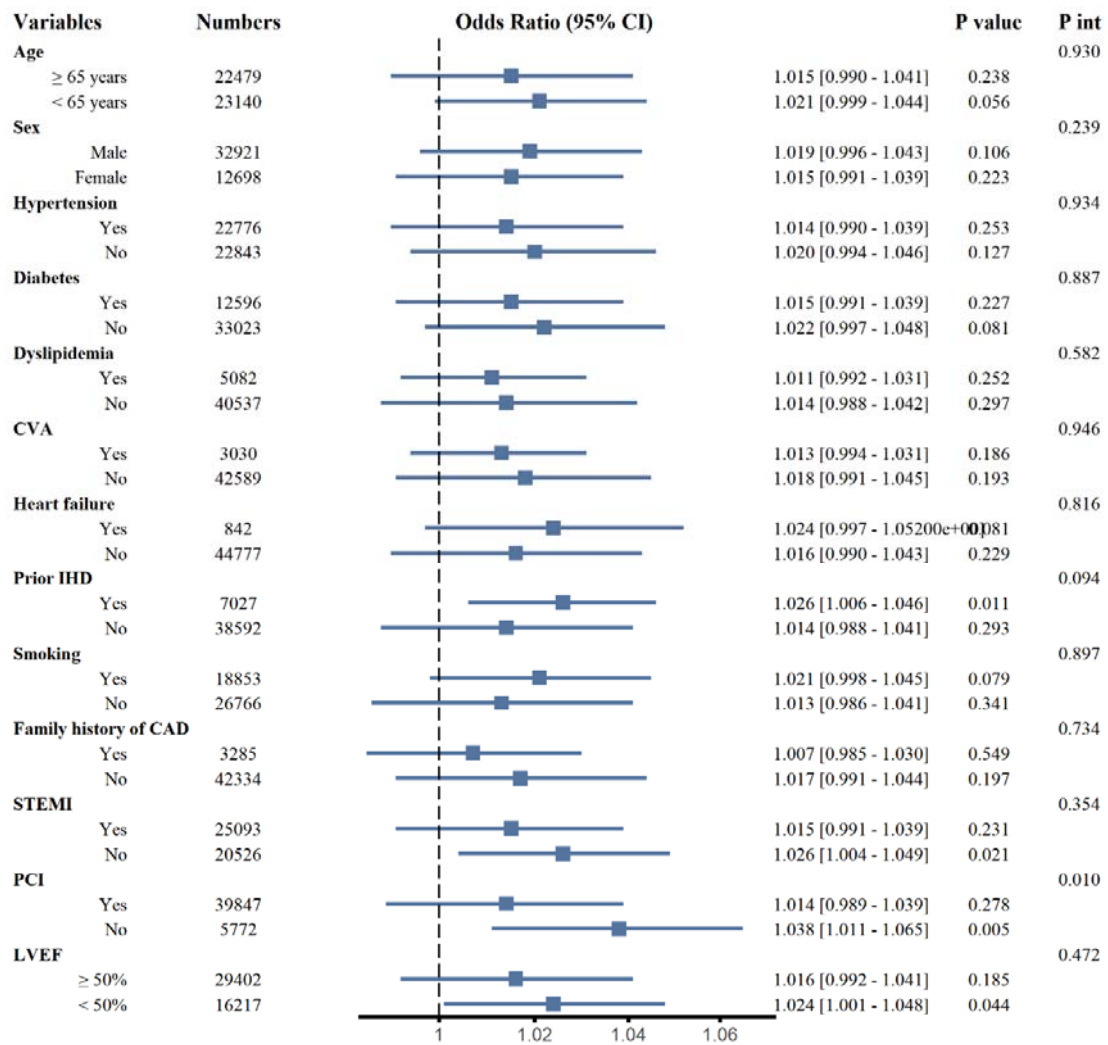
538 **Figure S8.** Subgroup analysis for the adjusted odds ratio and 95% confidence interval of the
 539 incidence of in-hospital cardiogenic shock according to an increase of 1 part per billion O₃.



540

541

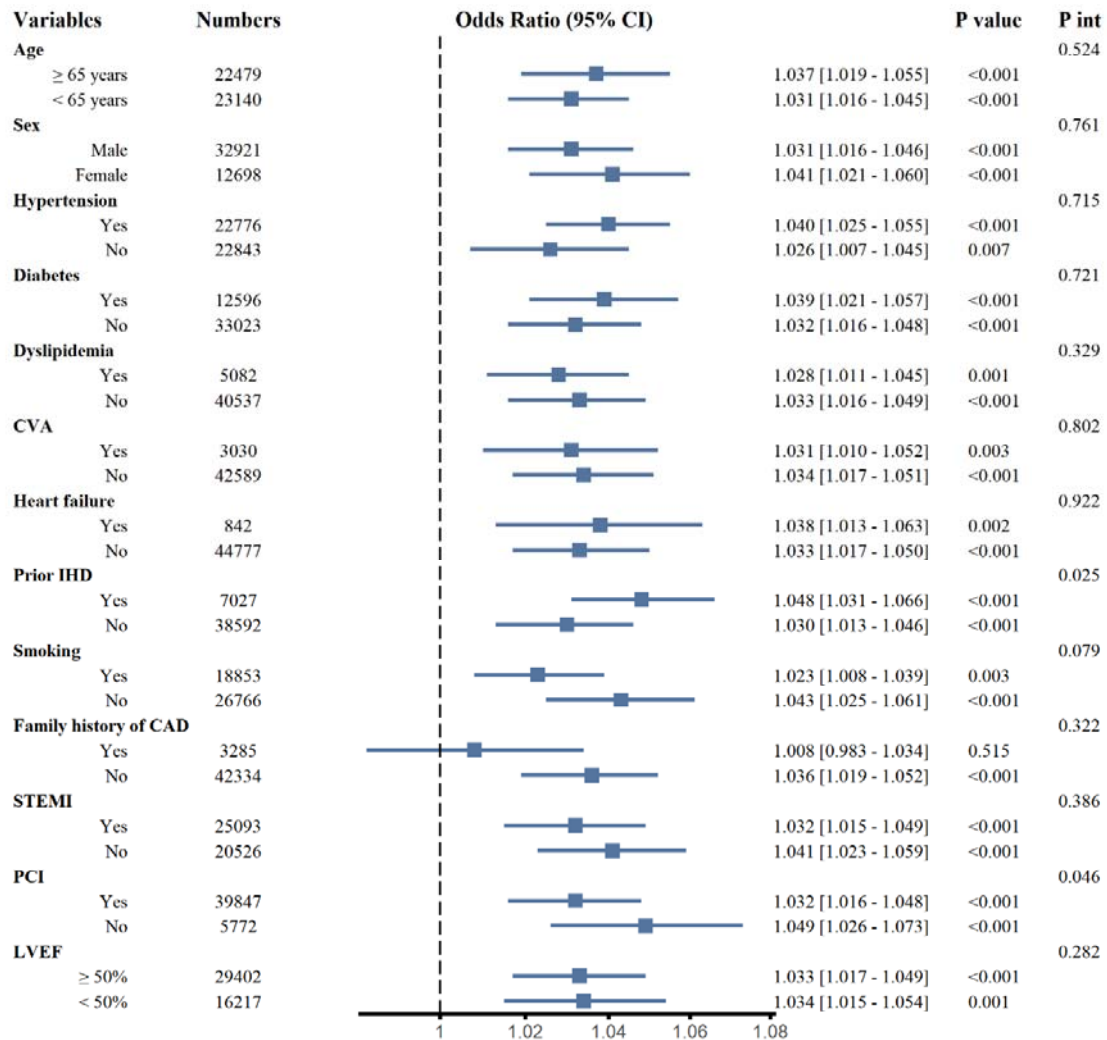
542 **Figure S9.** Subgroup analysis for the adjusted odds ratio and 95% confidence interval of the
 543 incidence of in-hospital cardiogenic shock according to an increase of 1 part per billion NO₂.



544

545

546 **Figure S10.** Subgroup analysis for the adjusted odds ratio and 95% confidence interval of
 547 the incidence of in-hospital cardiogenic shock according to the increase $1 \mu\text{g}/\text{m}^3 \text{PM}_{10}$ before
 548 the symptom date.



549