

Supplemental Files

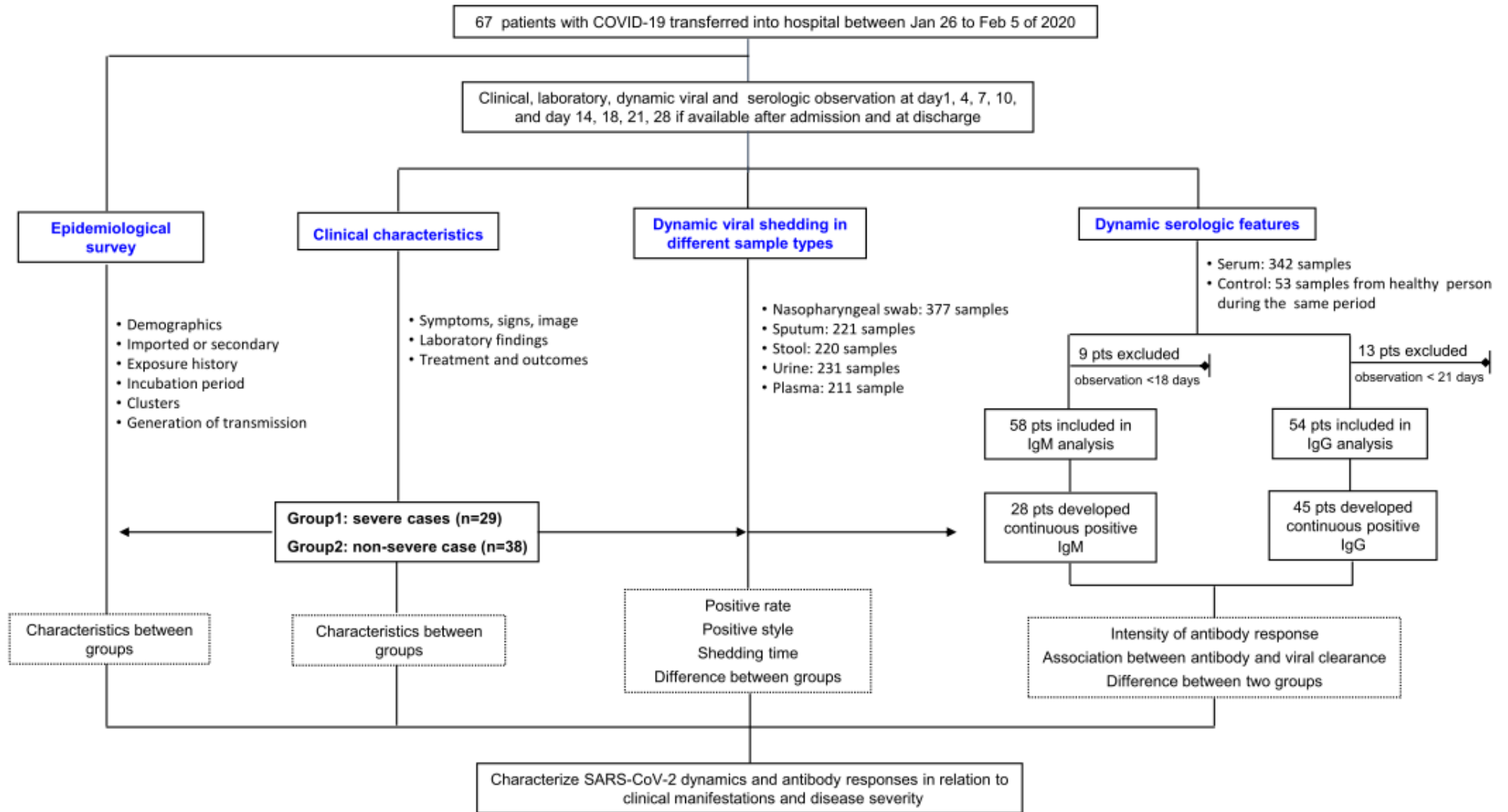
This file has been provided by the authors to give readers additional information about their work.

Supplement to: Tan WT, Lu Y, Zhang J, et al. Viral Kinetics and Antibody Responses in Patients with COVID-19. Manuscript submitted to *the BMJ*.

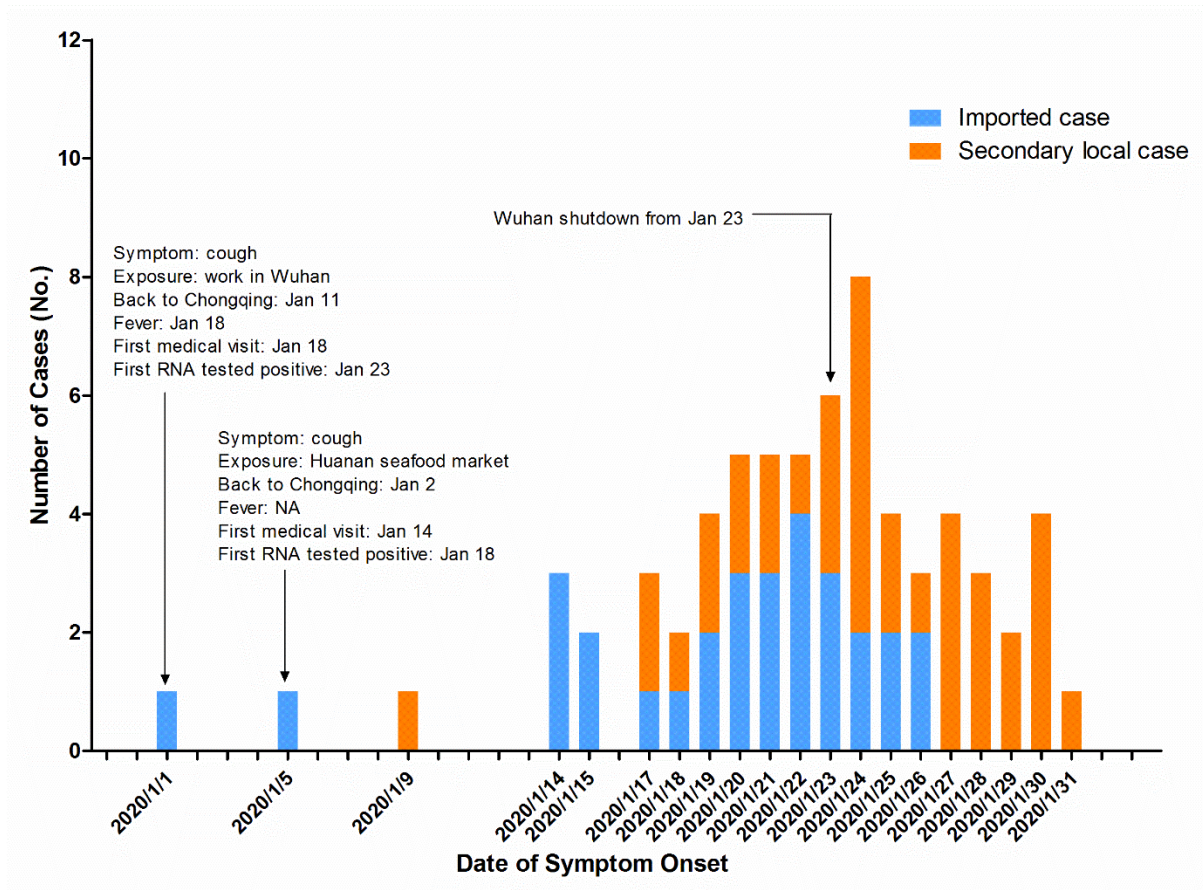
Supplementary Files: Table of Contents

1. Supplementary Figures		
Supplementary Figure 1	Study design and the analysis flow diagram	page 3
Supplementary Figure 2	Date of symptoms onset in our cohort of 67 patients with SARS-CoV-2 infected	page 4
Supplementary Figure 3	Incubation period in different gender and age group	page 5
Supplementary Figure 4	Distribution of the key time-to-event relating to epidemic identification and disease process	page 6
Supplementary Figure 5	Standard curve of relationship between viral loads and Ct value	page 7
Supplementary Figure 6	Comparison of SARS-CoV-2 shedding in nasopharyngeal swab and sputum	page 8
Supplementary Figure 7	Comparison of viral shedding time in severe and non-severe COVID-19 patients	page 9
Supplementary Figure 8	SARS-CoV-2 detection in urine and blood, and the details of patients who were confirmed by other type of specimens rather than nasopharyngeal swab	page 10
2. Supplementary Tables		
Supplementary Table 1	Key time-to-events distribution in patients with COVID-19	page 11
Supplementary Table 2	Clinical and radiographic characteristics of the study patients	page 12
Supplementary Table 3	Laboratory findings	page 13
Supplementary Table 4	Complications, Treatments, and Clinical Outcomes	page 14

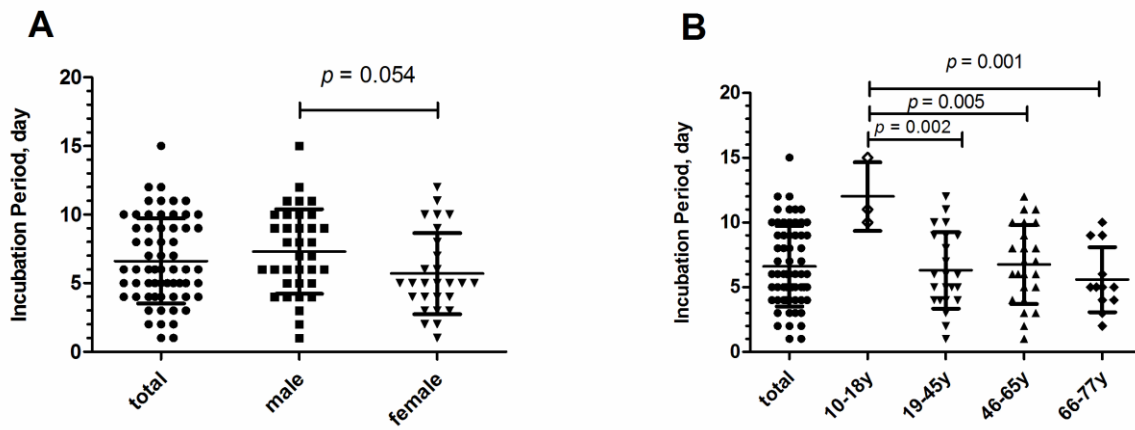
Supplementary Figure 1. Study design and the analysis flow diagram.



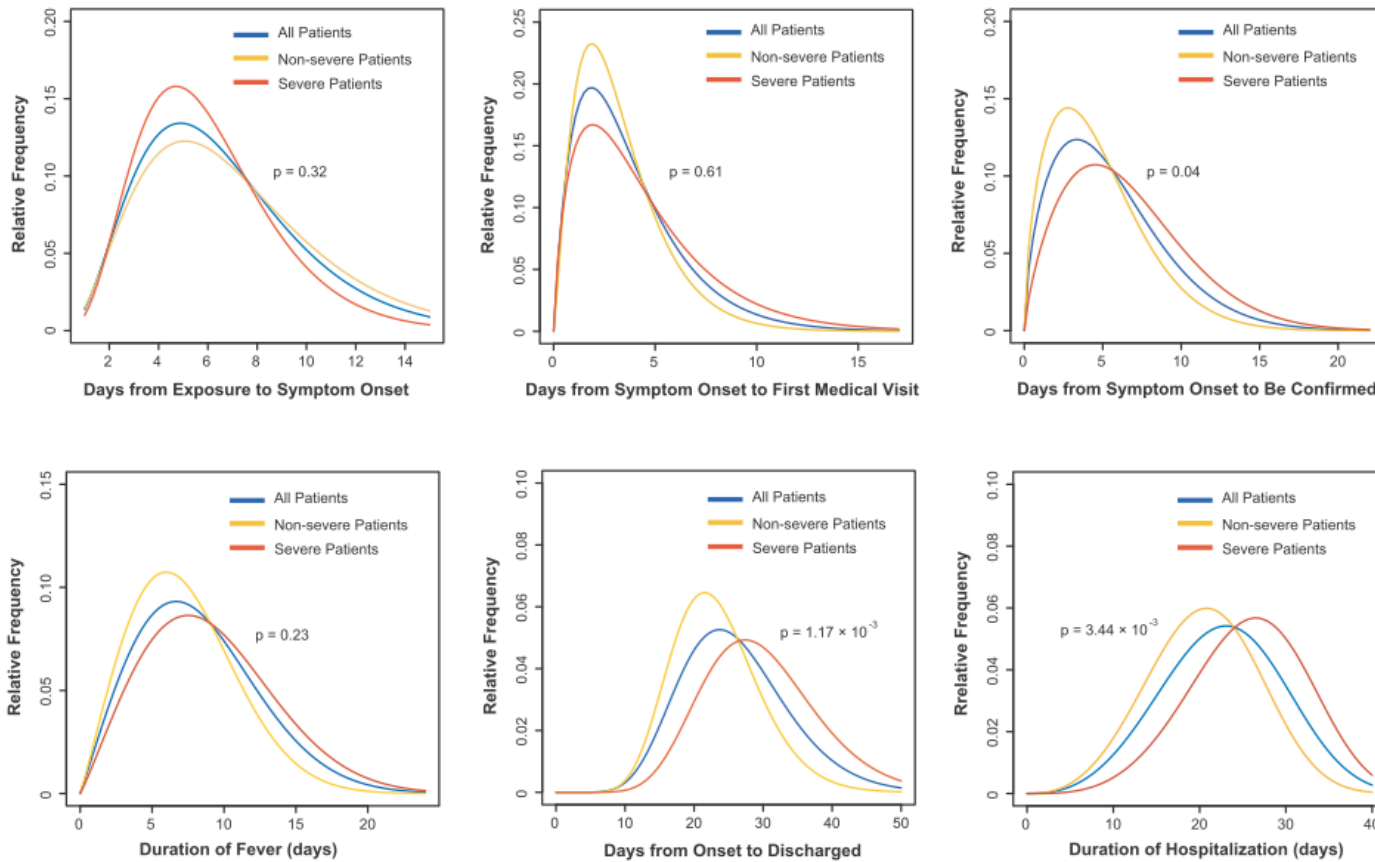
Supplementary Figure 2. Date of symptoms onset in our cohort of 67 patients with SARS-CoV-2 infected from Chongqing, China.



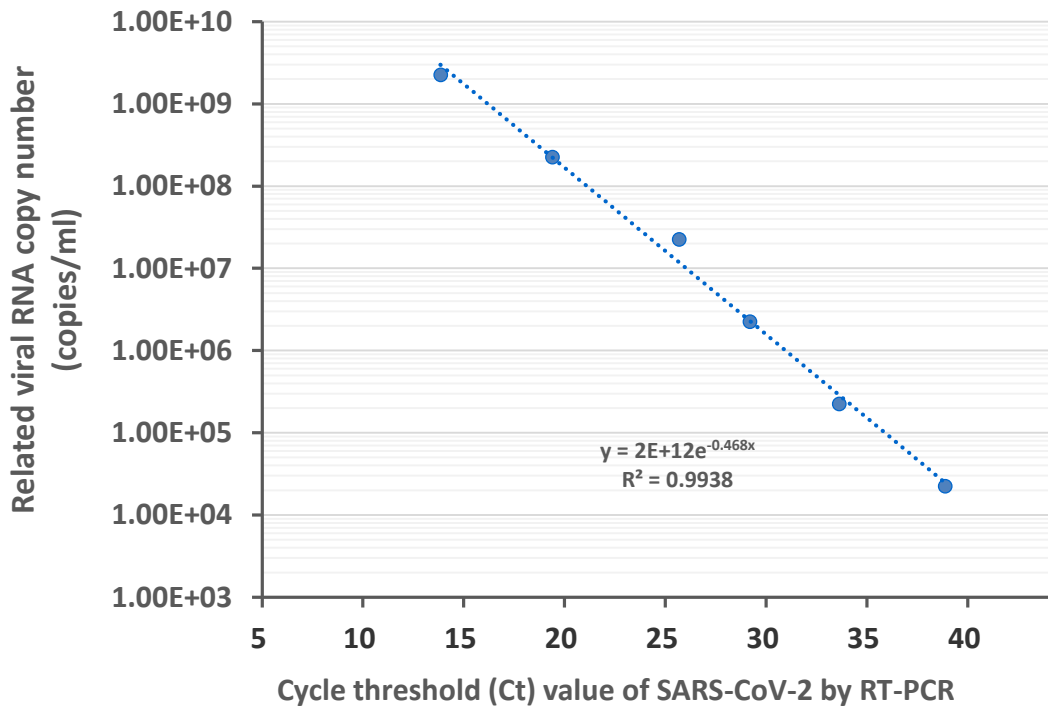
Supplementary Figure 3. Incubation period in different gender and age group. (A) The mean incubation duration for male was 7.3 ± 3.1 days, and that was 5.7 ± 3.0 for female ($p = 0.054$). (B) The mean incubation duration for 10-18yr, 19-45yrs, 46-65yrs and 66-77yrs group were 12.0 ± 2.7 , 6.3 ± 3.0 , 6.8 ± 3.0 and 5.6 ± 2.5 days, respectively. Children have a prolonged incubation period compared with other three age group ($p < 0.01$).



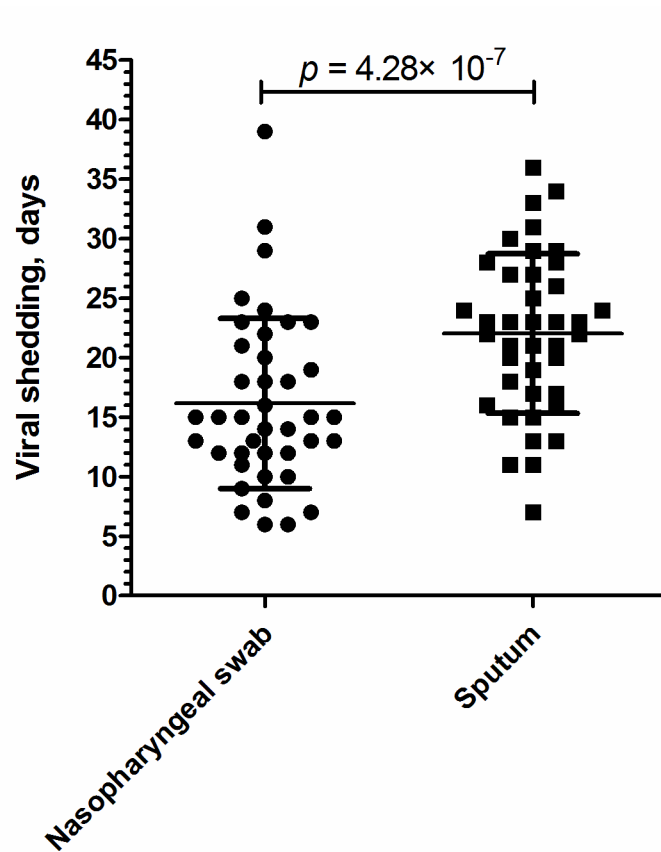
Supplementary Figure 4. Distribution of the key time-to-event relating to epidemic identification and disease process. The key time-to-events distribution were estimated by one-sample Kolmogorov-Smirnov test on a given day for each category shown. The incubation period, interval days from symptom onset to first medical visit, and the duration of disease course (i.e. days from onset to be discharged) were estimated by fitting a Gamma-distribution. The days from symptom onset to be conformed, fever Period, and hospitalization days fit a Weibull-distribution. The distribution of the duration of disease course, conformation, and hospitalization were significantly longer in severe patients than that in non-severe patients ($p < 0.05$).



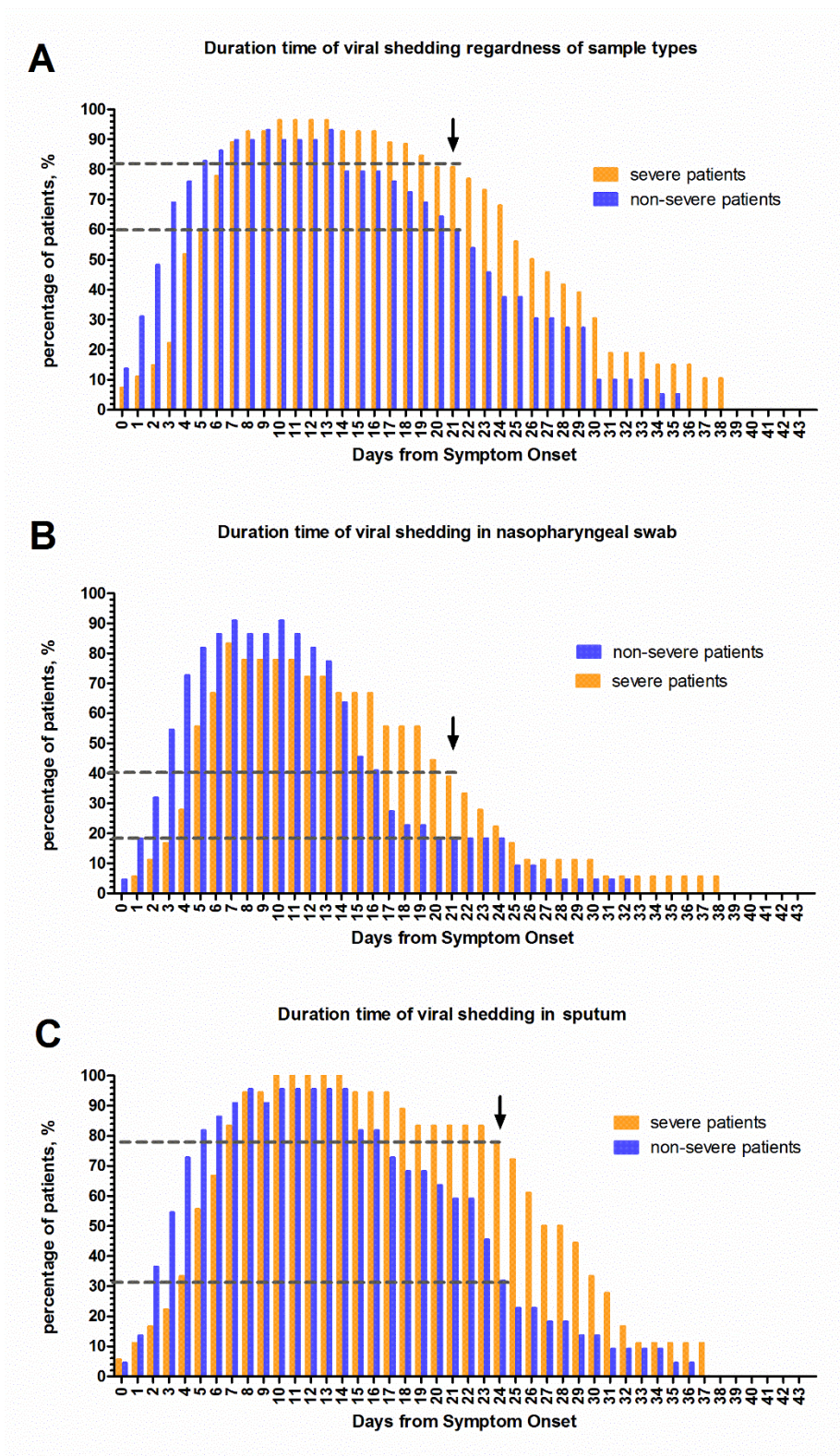
Supplementary Figure 5. Standard curve of relationship between viral loads and C_t value. The viral RNA copy numbers are inversely related to C_t values with C_t values of 13.85, 19.39, 25.68, 29.20, 33.61, and 38.87 and corresponding to 2.25×10^9 , 2.25×10^8 , 2.25×10^7 , 2.25×10^6 , 2.25×10^5 , and 1.5×10^4 copies per milliliter.



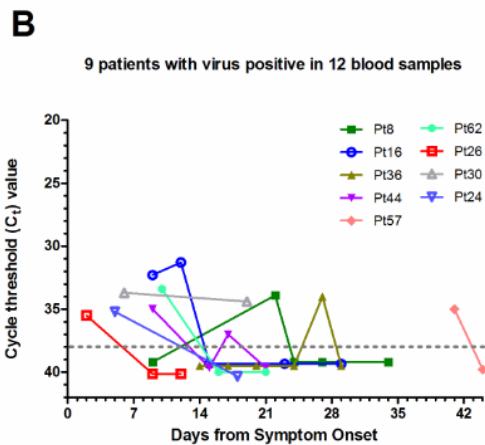
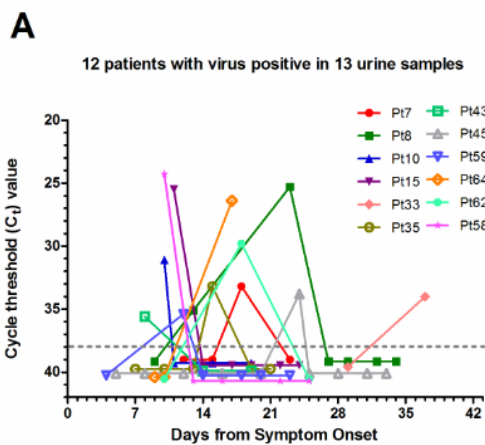
Supplementary Figure 6. Comparison of SARS-CoV-2 shedding in nasopharyngeal swab and sputum. Sputum have a longer shedding (mean 22.0 ± 6.7 days) compared with that in nasopharyngeal swabs in 40 patients from the cohort with continuous samples both for sputum and nasopharyngeal swabs (mean 16.2 ± 7.2 days, $p = 4.28 \times 10^{-7}$). The symbol with error bar denoted the mean and its standard deviation of viral shedding time.



Supplementary Figure 7. Comparison of viral shedding time in severe and non-severe COVID-19 patients. The dashed lines together with the arrows indicate an example at day 21 from illness onset.



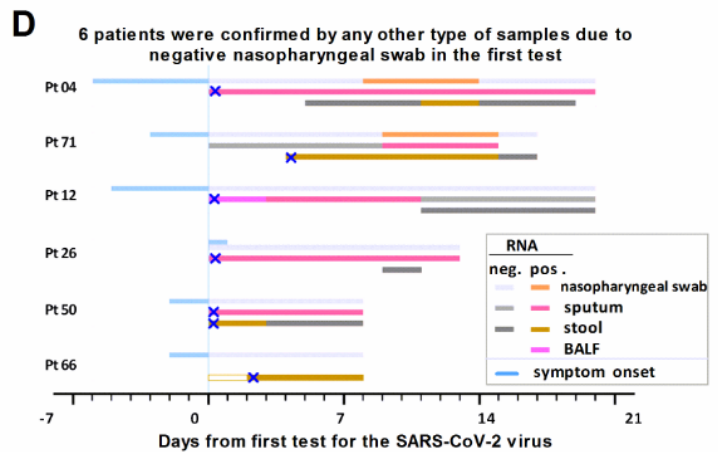
Supplementary Figure 8. SARS-CoV-2 detection in urine and blood, and the details of patients who were confirmed by other type of specimens rather than nasopharyngeal swab (NS). 13 urines from 12 patients (Panel A) and 12 plasmas from 9 patients (Panel B) were positive for SARS-CoV-2 RNA. Panel C shows the comparison of kidney functions at the urine viral positive and negative time-points. Only one patient was positive both in urine and plasma (Patient 62). Panel D shows six patients who were confirmed as COVID-19 via viral positive in sputum (patient 4, 26, 50), BALF (Patient 12), and/or stools (patient 71, 50, and 66), while their NS were negative for SARS-CoV-2 RNA at the confirmative time-points. Two of them developed NS-positive during the course (Patient 4 and 71), and the other four were still negative in NS in the next continuously dynamic RNA test. X shape symbol indicate the confirmation test.



C

Renal function at the time point that virus positive in urine

Renal function test	positive point (n=13)	negative point (n=195)
Fasting blood-glucose — mmol/L	6.0 ± 2.3	5.9 ± 1.4
Serum uric acid — μmol/L	312.6 ± 115.6	338.9 ± 382.0
Serum urea nitrogen — mmol/L	4.8 ± 1.5	4.3 ± 2.3
Serum creatinine — μmol/L	74.2 ± 19.5	70.2 ± 25.6
Estimated glomerular filtration rate (eGFR)	91.5 ± 20.5	100.2 ± 22.5



Supplementary Table 1. Key time-to-events distribution in patients with COVID-19.

Key time to events	All patients (n=67)		Severe patients (n=29)		non-Severe patients (n=38)		p-value
	N	Median (range)	n	Median (range)	n	Median (range)	
Days from explore to symptom onset	62	6 (1-15)	26	5.5 (1-11)	36	7 (1-15)	0.279
Days from onset to first medical visit	67	2 (0-17)	29	3 (1-17)	38	2 (1-11)	0.266
Days from onset to be conformed	67	4 (0-22)	29	5 (0-22)	38	3 (1-15)	0.01
Interval of first visit to confirmation, days	67	1.0 (0-9)	29	2 (0-9)	38	0 (0-8)	0.049
Days from explore to fever onset *	46	7 (0-17)	25	5 (2-17)	21	7 (0-12)	0.287
Fever period, days #	49	8 (2-24)	27	8 (3-24)	22	6 (2-16)	0.143
Days from onset to hospitalized	67	3 (0-17)	29	3 (0-17)	38	2 (0-13)	0.06
Days from onset to discharged	67	25 (12-44)	29	30 (12-44)	38	22 (12-38)	0.0008
Duration of hospitalization, days	67	22 (9-38)	29	27 (11-38)	38	20 (9-33)	0.003

*For patients with fever before admission; # include 3 more patients developed fever after admission.

Supplementary Table 2. Clinical and radiographic characteristics of the study patients.

	All patients (n=67)	Severe patients (n=29)	non-Severe patients (n=38)	p-value
Signs				
Highest respiratory rate , bpm	21.5 ±2.4	23.0 ±2.9	20.4 ±1.1	4.21×10 ⁻⁵
Respiratory rate >24 bpm	10/67 (14.9)	9/29 (31.0)	1/38 (2.6)	0.002
Lowest oxygenation index (PaO ₂ /FiO ₂)	307.7 ±115.5	204.93 ±50.5	410.5 ±52.1	1.32×10 ⁻²¹
Heart rate, pulse per min	91.3 ±12.2	90.6 ±12.1	91.9 ±12.4	0.689
Systolic blood pressure, mmHg	127.4 ±18.1	130.4 ±19.1	125.0 ±17.2	0.24
Diastolic blood pressure, mmHg	78.1 ±11.3	77.6 ±11.9	78.5 ±11.1	0.774
Fever#	49/67 (73.1)	27/29 (93.1)	22/38 (57.9)	0.002
Highest temperature, °C				0.006
<37.3	18/66 (27.3)	2/28 (7.1)	16/38 (42.1)	
37.3-38.0	22/66 (33.3)	10/28 (35.7)	12/38 (31.6)	
38.1-39.0	23/66 (34.8)	15/28 (53.6)	8/38 (21.1)	
>39.0	3/66 (4.5)	1/28 (3.6)	2/38 (5.3)	
Abnormal breath sounds	12/67 (17.9)	8/29 (27.6)	4/38 (10.5)	0.071
Symptoms during the course #				
Fatigue	22/67 (32.8)	12/29 (41.4)	10/38 (26.3)	0.193
Anorexia	7/67 (10.4)	3/29 (10.3)	4/38 (10.5)	0.981
Cough	65/67 (97.0)	29/29 (100.0)	36/38 (94.7)	0.21
Hemoptysis	2/67 (3.0)	2/67 (3.0)	0	0.184
Chest tightness	9/67 (13.4)	7/29 (24.1)	2/38 (5.3)	0.034
Polypnea	33/67 (49.3)	23/29 (79.3)	10/38 (26.3)	1.72×10 ⁻⁵
Pharyngalgia	8/67 (11.9)	4/29 (13.8)	4/38 (10.5)	0.683
Headache	7/67 (10.4)	3/29 (10.3)	4/38 (10.5)	1
Muscle Soreness	6/67 (9.0)	2/29 (6.9)	4/38 (10.5)	0.606
Vomit	3/67 (4.5)	0	3/35 (8.6)	0.252
Diarrhea	15/67 (22.4)	6/29 (20.7)	9/38 (23.7)	0.771
Chest CT scans				
Present abnormalities of lung	64/67 (95.5)	29/29 (100.0)	35/38 (92.1)	0.252
Location of lesion				0.013
Both lungs	43/64 (67.2)	25/29 (86.2)	18/35 (51.4)	0.003
Partial lobe of both side	6/64 (9.4)	2/29 (6.9)	4/35 (11.4)	0.536
Partial lobe of right lung	10/64 (15.6)	1/29 (3.4)	9/35 (25.7)	0.017
Partial lobe of left lung	4/64 (6.3)	0	4/35 (11.4)	0.12
Subpleural	1/64 (1.6)	1/29 (3.4)	0	0.453

include 3 patients developed fever newly, 2 fatigue, 17 cough, and 13 vomit or diarrhea after admission. bpm: breaths per min.

Supplementary Table 3. Laboratory findings.

Variable	All patients (n=67)	Severe patients (n=29)	non-Severe patients (n=38)	p-value
White blood cell count, $\times 10^9/L$	5.7 \pm 2.7	6.5 \pm 3.5	5.1 \pm 1.8	0.061
White blood cell count, $\times 10^9/L$				0.056
<4.0	17/67 (25.4)	6/29 (20.7)	11/38 (28.9)	0.442
4.0-10.0	46/67 (68.7)	19/29 (65.5)	27/38 (71.1)	0.628
>10.0	4/67 (6.0)	4/29 (13.8)	0	0.031
Neutrophil count, $\times 10^9/L$	3.9 \pm 2.6	4.9 \pm 3.3	3.1 \pm 1.5	0.007
Neutrophil rate > 70%	25/67 (37.3)	18/29 (62.1)	7/38 (18.4)	0.0003
Lymphocyte count, $\times 10^9/L$	1.4 \pm 0.6	1.1 \pm 0.5	1.6 \pm 0.7	0.0007
Lymphocyte rate < 20%	21/67 (31.3)	16/29 (55.2)	5/38 (13.2)	0.0002
Lymphocyte rate > 40%	11/67 (16.4)	2/29 (6.9)	9/38 (23.7)	0.097
Monocyte count, $\times 10^9/L$	0.4 \pm 0.2	0.4 \pm 0.2	0.4 \pm 0.1	0.943
Monocyte rate > 8%	31/67 (46.3)	9/29 (31.0)	22/38 (57.9)	0.029
Red blood cell count, $\times 10^{12}/L$	4.3 \pm 0.5	4.2 \pm 0.5	4.4 \pm 0.5	0.052
Haemoglobin, g/L	135.4 \pm 43.2	141.3 \pm 59.7	130.9 \pm 24.1	0.330
Platelet count, $\times 10^9/L$	198.4 \pm 100.4	208.4 \pm 127.7	190.8 \pm 74.1	0.510
Platelet count <100 $\times 10^9/L$	4/67 (6.0)	3/29 (10.3)	1/38 (2.6)	0.308
Alanine transaminase (ALT), U/L	49.5 \pm 101.1	67 \pm 145.2	36.1 \pm 42.8	0.218
ALT > 50 U/L	17/67 (25.4)	10/29 (34.5)	7/38 (18.4)	0.134
Aspartate transaminase, U/L	35.5 \pm 27	39.6 \pm 24.6	32.3 \pm 28.5	0.276
Total bilirubin (TBil), $\mu\text{mol}/L$	14.9 \pm 6.3	15.8 \pm 6.9	14.3 \pm 5.8	0.329
TBil > 17.1 $\mu\text{mol}/L$	19/67 (28.4)	9/29 (31.0)	10/38 (26.3)	0.671
Albumin (Alb), g/L	40.2 \pm 4.7	37.9 \pm 5.2	42 \pm 3.5	0.0006
Alb < 35 g/L	9/67 (13.4)	8/29 (27.6)	1/38 (2.6)	0.008
Sodium, mmol/L	137.9 \pm 3.4	137.1 \pm 4.1	138.5 \pm 2.7	0.122
Potassium, mmol/L	3.9 \pm 0.5	3.8 \pm 0.5	4.1 \pm 0.5	0.007
Fasting blood glucose, mmol/L	6.5 \pm 1.6	7.2 \pm 2.1	6 \pm 1	0.014
Creatinine, $\mu\text{mol}/L$	72.3 \pm 31.7	71 \pm 19.2	73.3 \pm 38.8	0.767
Creatine kinase (CK), U/L	142.9 \pm 218.7	183.8 \pm 312.8	111 \pm 90.8	0.242
CK > 170 U/L	14/65 (21.5)	8/28 (28.6)	6/36 (16.7)	0.253
Lactate dehydrogenase (LDH), U/L	266.2 \pm 124.5	334.3 \pm 144.4	214.2 \pm 73.9	0.0002
LDH > 245 U/L	29/67 (43.3)	23/29 (79.3)	6/36 (15.8)	2.0 $\times 10^{-7}$
Prothrombin time, sec.	12.1 \pm 1	12.1 \pm 1.3	12 \pm 0.8	0.652
D-dimer, mg/L	1.2 \pm 6.9	2.4 \pm 10.3	0.2 \pm 0.2	0.269
D-dimer > 0.5 mg/L	13/67 (19.4)	9/29 (31.0)	4/38 (10.5)	0.035
International normalized rate	1.0 \pm 0.1	1.0 \pm 0.1	1.0 \pm 0.1	0.698
C-reactive protein (CRP), mg/L	29.5 \pm 40.1	45.2 \pm 47	17.5 \pm 29.2	0.008
CRP > 10 mg/L	36/67 (53.7)	22/29 (75.9)	14/38 (36.8)	0.002
Procalcitonin, ng/mL	0.13 \pm 0.53	0.23 \pm 0.79	0.06 \pm 0.11	0.272
Erythrocyte sedimentation rate (ESR), mm/h	42.8 \pm 26.5	54.8 \pm 24.4	33.2 \pm 24.4	0.002
ESR > 20 mm/h	43/67 (64.2)	24/29 (82.8)	19/38 (50.0)	0.006

Data are mean (standard deviation) or n/N (%), where N is the total number of patients with available data.

Supplementary Table 4. Complications, Treatments, and Clinical Outcomes.

	All patients (n=67)	Severe patients (n=29)	non-Severe patients (n=38)	p-value
Complications				
Acute respiratory distress syndrome	7/67 (10.4)	7/29 (24.1)	0	0.002
Septic shock	3/67 (4.5)	3/29 (10.3)	0	0.076
Acid base disturbance	3/67 (4.5)	2/29 (6.9)	1/38 (2.6)	0.574
Electrolyte disorder	7/67 (10.4)	7/29 (24.1)	0	0.002
Respiratory failure	14/67 (20.9)	14/29 (48.3)	0	1.47×10 ⁻⁶
Bacterial infection	15/67 (22.4)	13/29 (44.8)	2/38 (5.3)	1.18×10 ⁻⁴
multiple organ dysfunction syndrome	3/67 (4.5)	3/29 (10.3)	0	0.076
Liver injury*	19/67 (28.4)	11/29 (37.9)	8/38 (21.1)	0.129
Kidney injury	2/67 (3.0)	2/29 (6.9)	0	0.184
Secondary immunodeficiency	6/67 (9.0)	6/29 (20.7)	0	0.005
Treatment				
Antiviral therapy	67/67 (100)	29/29 (100)	38/38 (100)	1.000
IFN-α 1b	2/67 (3.0)	0	2/38 (5.3)	-
IFN-α 1b + ribavirin	1/67 (1.5)	1/29 (3.4)	0	-
IFN-α 1b + lopinavir/ritonavir	51/67 (76.1)	24/29 (82.8)	27/38 (71.1)	-
IFN-α 1b + lopinavir/ritonavir + ribavirin	11/67 (16.4)	4/29 (13.8)	7/38 (18.4)	-
IFN-α 1b + lopinavir/ritonavir + darunavir/cobistatit	1/67 (1.5)	0	1/38 (2.6)	-
IFN-α 1b + lopinavir/ritonavir + darunavir/cobistatit + arbidol	1/67 (1.5)	0	1/38 (2.6)	-
Oxygen support	45/67 (67.2)	29/29 (100)	16/38 (42.1)	5.74×10 ⁻⁷
Nasal cannula	31/45 (68.9)	15/29 (51.7)	16/16 (100)	-
Mask oxygen inhalation	3/45 (6.7)	3/29 (10.3)	0	-
Non-invasive ventilation	6/45 (13.3)	6/29 (20.7)	0	-
Invasive ventilation	5/45 (11.1)	5/29 (17.2)	0	-
Antibiotic therapy	19/67 (28.4)	15/29 (51.7)	4/38 (10.5)	2.10×10 ⁻⁴
Use of corticosteroid	9/67 (13.4)	9/29 (31.0)	0	2.34×10 ⁻⁴
Prognosis at data cutoff				0.009
Hospitalisation	21/67 (31.3)	14/29 (48.3)	7/31 (22.6)	-
Discharge	46/67 (68.7)	15/29 (51.7)	31/38 (81.6)	-

IFN: Interferon. *Liver injury refers to those with alanine transaminase >2 times and/or total bilirubin >2 times of upper limit of normal. Data are n/N (%), where N is the total number of patients with available data.