

1 **Title:** Association Between Birth Region and Time to Tuberculosis Diagnosis After US Entry  
2 Among Non-US-Born Persons

3 **Authors:** Amish Talwar, Rongxia Li, Adam J. Langer

4 **Author affiliations:** Centers for Disease Control and Prevention, Atlanta, Georgia, USA (A.  
5 Talwar, R. Li, A.J. Langer)

6

7 **Abstract – 143 words**

8 Approximately 90% of US tuberculosis (TB) cases among non-US-born persons are attributable  
9 to progression of latent TB infection to TB disease. Using survival analysis, we investigated if  
10 birthplace is associated with time of progression to TB disease among non-US-born persons. We  
11 derived a Cox regression model comparing differences in time to TB diagnosis after US entry  
12 among 19 global birth regions, adjusting for sex, birth year, and age at diagnosis. Compared with  
13 persons from Western Europe, the adjusted hazard rate of developing TB was significantly  
14 higher ( $p \leq 0.05$ ) for persons from all other regions, except North America and Northern Europe,  
15 and highest among persons from Middle Africa (adjusted hazard ratio = 7.0; 95% confidence  
16 interval: 6.5–7.4). Time to TB diagnosis among non-US-born persons therefore varied by birth  
17 region, which represents an important prognostic indicator for progression to TB disease.

18 **Text – 3,452 words**

19 Introduction

20 The majority of incident tuberculosis (TB) cases in the United States occurs among non–  
21 US-born persons. During 2018, 70.2% of TB disease cases occurred among non–US-born  
22 persons, and 46.6% of those cases were diagnosed  $\geq 10$  years after arrival to the United States  
23 (1). Although TB disease can result from recent person-to-person transmission, it is more  
24 commonly the result of progression of latent TB infection (LTBI) to TB disease. LTBI is a form  
25 of TB in which a person is infected with *Mycobacterium tuberculosis*, the causative agent of TB,  
26 but remains asymptomatic and noncontagious (2); if left untreated, LTBI can progress to TB  
27 disease among  $\leq 10\%$  of persons with LTBI within their lifetime (2). Because  $>85\%$  of TB  
28 disease cases among non–US-born persons residing in the United States are attributed to  
29 progression of LTBI to TB disease (3,4), a substantial proportion of TB cases among non–US-  
30 born persons is likely the result of progression of LTBI acquired before US arrival.  
31 Consequently, the Centers for Disease Control and Prevention (CDC) recommend that efforts to  
32 eliminate TB in the United States, in part, focus on LTBI detection and treatment among non–  
33 US-born persons (5).

34 Understanding the factors associated with LTBI progression can help guide these efforts  
35 by identifying persons with LTBI who are at greatest risk of developing TB disease, allowing TB  
36 prevention resources to be concentrated on the populations at highest risk. Although persons  
37 recently infected with TB and persons with weakened immune systems are at higher risk for  
38 progressing to TB disease (6), the factors affecting the time required to develop TB disease  
39 remain unclear, particularly for non–US-born persons. Knowing such information can help

40 public health officials target interventions for LTBI testing and treatment for these persons  
41 before LTBI progresses to TB disease. One study found the risk of developing TB disease among  
42 non-US-born persons decreased with increasing time since US entry (7). However, non-US-  
43 born persons are a heterogenous population who differ in health status based on country of origin  
44 (8), and the effect of birth country on progression from LTBI to TB disease remains unclear. To  
45 answer this question, we compared the time necessary for non-US-born persons to develop TB  
46 disease after arrival in the United States according to birthplace.

#### 47 Methods

48 Using US national TB surveillance data for 2011–2018, we assessed time to TB disease  
49 diagnosis among non-US-born persons after US entry according to geographical birth region  
50 (see “Research Design and Variables”); we categorized birth countries into regions because of  
51 the high number of countries represented among non-US-born persons with TB disease. We  
52 assessed time to TB disease diagnosis as time from US entry to the time the TB case was  
53 reported to a local or state health department, and we excluded persons with TB disease  
54 attributed to recent transmission (3) to focus on persons whose TB disease was most likely  
55 caused by progression of LTBI acquired in their birth countries. We compared these times by  
56 using bivariate and multivariate survival analysis, and we adjusted for age at TB disease  
57 diagnosis, sex, and birth year.

#### 58 Study Population

59 We derived the study population for this analysis from CDC’s National Tuberculosis  
60 Surveillance System (NTSS), which has been collecting information on TB disease cases in the  
61 United States since 1953 (9). Case reports include demographic, clinical, and risk factor data.

62 NTSS's most recent TB surveillance case definition as of 2009 is available in the 2018 US TB  
63 surveillance report (1). For this study, we examined cases reported to NTSS from January 2011  
64 through December 2018 among non-US-born persons (i.e., persons born outside the United  
65 States or its territories for whom neither parent was a US citizen) (birth countries and territories  
66 are listed in Appendix A). We excluded cases reported from the US territories or states freely  
67 associated with the United States (Figure 1).

68 We also excluded cases attributed to recent TB transmission in the United States by using  
69 a previously published method that uses NTSS and genotypic data to determine likelihood of  
70 recent transmission. This plausible-source case method attributes cases to recent transmission if  
71 at least one plausible source case for the case of interest is identified in NTSS (3). With this  
72 method, cases are either attributed to recent transmission, not attributed to recent transmission, or  
73 receive neither designation if they lack the necessary information to assess for recent  
74 transmission (e.g., missing genotype data). By excluding cases attributed to recent transmission,  
75 we were able to analyze cases that were more likely the result of LTBI progression. We further  
76 excluded cases not attributed to recent transmission among persons for whom time from arrival  
77 to TB disease diagnosis was  $\leq 3$  months because TB disease among such persons can represent  
78 disease that was present at time of US entry rather than LTBI reactivation after US arrival;  
79 excluding these cases also helps account for variability in TB disease screening overseas before  
80 US entry.

81 Finally, we excluded cases with missing data and observations with nonsensical values  
82 for a category (i.e., months to TB disease diagnosis  $< 0$ , non-US-born persons with "United  
83 States" listed as birth country, or age less than number of months to TB disease diagnosis).

## 84 Research Design and Variables

85           We performed a bivariate analysis and a multivariate analysis examining the association  
86 between birth country and time from initial US arrival to TB disease diagnosis, which was our  
87 main outcome variable. In addition to birth country, we examined the following NTSS case  
88 demographic variables as additional covariates for our analyses: age at TB disease diagnosis,  
89 sex, and birth year. We performed the bivariate analysis to assess the association between time to  
90 TB disease diagnosis and those variables individually, and we performed the multivariate  
91 analysis to account for the effects of the additional demographic variables on the association  
92 between birth country and time to TB disease diagnosis. For our analyses, time to TB disease  
93 diagnosis was the number of months spent in the United States before TB disease diagnosis,  
94 which we derived by subtracting the date of initial US entry from the date that the TB disease  
95 case was reported. We used the case report date because information regarding actual disease  
96 diagnosis date was unavailable through NTSS; the report date represents the earliest notification  
97 to a local public health agency that the patient might have TB disease. Because >200 non-US  
98 countries and territories of birth were reported to NTSS during the study timeframe, we used the  
99 United Nations M49 standard, which categorizes countries and territories according to  
100 geographic location and level of development, to divide these countries into 19 regions for ease  
101 of statistical analysis (10,11) (see “Birth Country Categorization” in Appendix B). For our  
102 bivariate analysis, we categorized age into 6 categories, but we kept age as a continuous variable  
103 for our multivariate analysis. We derived birth year by subtracting age from the year the case  
104 was reported, and we categorized birth year into 6 categories; we included birth year in our  
105 analysis to adjust for a previously observed birth year cohort effect among non-US-born persons  
106 with TB disease reported to NTSS (12). Finally, we excluded race/ethnicity as a covariate

107 because of multicollinearity with birth region (see “Exclusion of race/ethnicity variable” in  
108 Appendix B).

### 109 Statistical Analysis

110 We began by determining the number of patients who had TB disease not attributed to  
111 recent transmission in each demographic category and determined the median number of months  
112 (with interquartile range [IQR]) that these patients spent in the United States before receiving a  
113 TB disease diagnosis. We also determined the median number of months according to birth  
114 region and median age. We constructed a crude bivariate Kaplan-Meier survival curve to visually  
115 demonstrate the overall distribution of time to TB diagnosis since US entry. We then constructed  
116 bivariate Kaplan-Meier curves stratified by each demographic covariate. We tested for  
117 statistically significant differences between curves at  $p \leq 0.05$  by using the log rank test and  
118 reported global p values.

119 We then used Cox regression to examine the association of time to TB disease diagnosis  
120 and birth region, adjusting for the effects of age at diagnosis, sex, and birth year. We tested the  
121 proportional hazards assumption (see “Cox regression assumptions” in Appendix B), and  
122 because our data are likely double-truncated, we applied a correction for double-truncation to our  
123 sample set (13) (see “Double-truncation” in Appendix B). We reported adjusted hazard ratios  
124 (aHRs) with associated 95% confidence intervals (CIs) and p values from our Cox regression  
125 analysis.

126 Because the time after US entry at which persons who enter the United States with TB  
127 disease typically receive a diagnosis is unclear, previous studies have used a range of post-entry  
128 times to define cases as disease missed on entry as opposed to LTBI reactivation (14–16).

129 Therefore, we performed a sensitivity analysis to assess the effect of extending the exclusion  
130 window from 3 months to 6 months for TB disease missed at time of entry for our Cox  
131 regression analysis. Additionally, because TB in a child can be considered a sentinel event that  
132 indicates recent transmission (17), we performed a sensitivity analysis to assess the effect of  
133 excluding children aged <5 years on the basis of previous research demonstrating that recent  
134 transmission is most commonly observed among children in that age group (3,4).

135 We performed all statistical analyses using R version 3.6.1, and we used the R code  
136 developed by Rennert and Xie to correct for double truncation (13). All data were collected as  
137 part of routine disease surveillance and were not part of human subjects research requiring  
138 institutional review board approval.

## 139 Results

140 During 2011–2018, 79,159 TB cases were reported to NTSS (Figure 1). Of those cases,  
141 28,745 cases were among US-born persons, were not reported from one of the 50 states or the  
142 District of Columbia, or did not have a known origin of birth. We also excluded 15,655 cases  
143 that were either attributed to recent transmission or had no information regarding recent  
144 transmission available; we excluded 2,906 cases for which the time to TB diagnosis was  $\leq 3$   
145 months. Finally, we excluded 3,403 cases with missing information for  $\geq 1$  of the variables  
146 considered; because only approximately 10% of the included cases had missing data for  $\geq 1$   
147 variable, we performed listwise deletion of those cases for our analyses. As a result, we included  
148 28,450 cases for our analyses.

149 The median number of months that a non-US-born person spent in the United States  
150 before receiving a diagnosis of TB disease not attributed to recent transmission was 144 months

151 (IQR: 52–294 months). Persons from Middle Africa had the lowest median number of months  
152 until TB diagnosis (26 months), and persons from Western Europe had the highest median  
153 number of months (541 months) (Table 1). The median patient age was 48 years (IQR: 32–65  
154 years). The highest proportion of non–US-born persons who developed TB disease not attributed  
155 to recent transmission after arrival to the United States emigrated from Asia (Table 2); the  
156 subregion or intermediary region with the highest proportion of non–US-born persons who  
157 received a TB diagnosis in the United States not attributed to recent transmission was South-  
158 eastern Asia.

159         Figures 2 and 3 display the Kaplan-Meier estimates for time to TB diagnosis, both crude  
160 and stratified by birth region; Kaplan-Meier estimates for the other covariates are located in  
161 Appendix C (Figures C1–C3). For all 4 variables, we identified statistically significant  
162 differences in the survival curves ( $p < 0.01$  for each). Table 2 and Figure 4 display the results of  
163 the Cox regression analysis: persons from Middle Africa had the highest hazard rate for  
164 developing TB disease, compared with persons from Western Europe, after adjusting for age at  
165 TB disease diagnosis, sex, and birth year (aHR = 7.02; 95% CI: 6.53–7.56); in other words, the  
166 chance of TB disease diagnosis is 7 times higher for non–US-born persons from Middle Africa  
167 than from Western Europe at any point during the study period, given that they did not  
168 previously have TB disease. Persons from all other regions had significantly higher adjusted  
169 hazard rates than persons from Western Europe at  $p \leq 0.05$ , except for persons from Northern  
170 America (i.e., Canada). The complete results of the Cox regression analysis, including aHRs for  
171 age at TB disease diagnosis, sex, and birth year, are available in Table C1 (Appendix C). Finally,  
172 after performing our sensitivity analyses, we observed that increasing the exclusion window



173 from  $\leq 3$  months to  $\leq 6$  months and excluding children aged  $< 5$  years changed the aHRs for all  
174 persons by  $< 10\%$ , regardless of birth region (Table C2, Appendix C).

## 175 Discussion

176 On the basis of our analysis of NTSS data, the length of time for non-US-born persons to  
177 receive a TB diagnosis varied according to birth region. The highest aHRs for TB disease  
178 diagnosis were concentrated among persons originating from Africa. In 2018, 5 of the 10 birth  
179 countries associated with the highest TB disease rates in the United States were African, and  
180 Africa had the highest TB disease rate globally (1,18). It is unclear if an actual causal association  
181 exists between higher overall TB disease rate in one's birthplace and one's likelihood of  
182 developing TB disease earlier. However, the World Health Organization's African Region had  
183 the highest proportion of LTBI attributable to recent infection in 2014 (19), and persons are most  
184 likely to develop TB disease soon after TB infection (5). Therefore, shorter time to TB disease  
185 diagnosis might be associated with higher annual risk of TB infection. Another possibility is that  
186 US health care providers might have a higher suspicion for TB disease among certain  
187 populations, particularly persons from countries with high TB rates, a known risk factor for  
188 development of TB disease because of the higher risk for TB infection in those countries (5).  
189 One other possibility is that these differences might reflect genetic differences between persons  
190 originating from different regions; certain host genetic factors have been associated with LTBI  
191 progression to TB disease (20). Although these potential etiologies are compelling, the  
192 differences observed in this study may likely be the consequence of overall poorer health status  
193 among persons from different regions, given lower levels of economic development and health  
194 care access; 33 of the 47 least-developed countries in the world are located in Africa (21), and  
195 Africa has the lowest overall healthy life expectancy (i.e., the number of years that a newborn is

196 expected to live in good health) (22). Importantly, persons with poorer health status, particularly  
197 malnutrition (23), might be more susceptible to developing TB disease, compared with healthier  
198 persons.

199         The association between birth region and time to TB diagnosis may also be a  
200 consequence of differences in risk factors for progression to TB disease among different regions.  
201 Both HIV infection and diabetes mellitus are key risk factors for LTBI reactivation, with HIV  
202 infection representing the greatest risk factor for LTBI reactivation (24); worldwide, 9% of  
203 incident TB cases in 2018 were among persons living with HIV, and 15% of TB cases might be  
204 linked to diabetes mellitus (18,25). Additionally, the majority of high TB and HIV burden  
205 countries are in Africa (16), and the HIV diagnosis rates for African-born persons living in the  
206 United States are 6 times higher than the rate for the general US population (26). Given the  
207 possibility of TB and HIV coinfection or TB and diabetes mellitus comorbidity as plausible  
208 etiologies for the association between birth region and time to TB disease diagnosis, including  
209 HIV status or diabetes mellitus diagnosis as variables in our analysis might appear reasonable.  
210 However, even though NTSS offers information on HIV status and diabetes mellitus diagnosis, it  
211 does not offer information on the date of testing or diagnosis. Therefore, to use these data, we  
212 would have to unjustifiably assume that a person's HIV status or presence of diabetes mellitus  
213 were constant throughout the time from US entry to TB disease diagnosis date. This assumption  
214 would also be invalid because global HIV incidence was likely low before the 1980s (27), and  
215 before 2010, HIV infection could prevent non-U.S. citizens from entering the United States (28).  
216 In addition, including history of diabetes mellitus as a variable in this study would have resulted  
217 in an immortal time bias (29). For example, persons who received a diagnosis of diabetes  
218 mellitus during the study period (i.e., before receiving a diagnosis of TB disease) must have

219 persisted long enough without a TB disease diagnosis to be diagnosed with diabetes mellitus; the  
220 period of time from the start of the study period to diagnosis of diabetes mellitus for these  
221 persons is known as *immortal time* because these persons might not have developed TB disease  
222 during that time interval. However, persons who have never received a diagnosis of diabetes  
223 mellitus might have received their TB diagnosis during this immortal time, resulting in a  
224 disadvantaged survival time despite not having a diabetes mellitus diagnosis. Therefore, we  
225 excluded HIV status and diabetes mellitus diagnosis as variables from this study.

226 Finally, all refugees entering the United States should undergo a domestic medical  
227 examination upon US entry. Given that Africa and Asia together account for the highest  
228 proportion of refugees coming to the United States since 2010 (30), their comparatively high  
229 aHRs in this study might be a consequence of TB disease diagnosis at the time of their domestic  
230 medical evaluation, especially since TB screening is a recommended component of that  
231 examination (31). However, the domestic medical examination is typically conducted 1–3  
232 months after US entry (32), which is within our exclusion window for cases attributable to  
233 imported TB disease. In addition, all refugees are screened for TB before US entry, making it  
234 less likely that newly diagnosed TB would be detected following US entry.

### 235 Limitations

236 Our study had several limitations. First, the characteristics of persons who immigrate to  
237 the United States may not represent persons who remain in their birth country. One study  
238 reported that birth country TB incidence was 5.4 times higher than the US TB incidence for  
239 persons born in those countries who immigrated to the United States (33); another study found  
240 that the prevalence by birth country of isoniazid resistance and multidrug-resistant TB in the

241 United States better correlated with the prevalence by birth country seen in NTSS data than with  
242 the prevalence seen in the birth countries themselves (34). This suggests that non-US-born  
243 persons are not representative of the overall birth country population in terms of TB risk.  
244 Additionally, NTSS does not report country of immediate origin, which can differ from birth  
245 country, nor does NTSS account for interceding travel outside the United States after initial US  
246 entry during which TB might have been transmitted. Finally, the health status of immigrants to  
247 the United States may be influenced by long-term US residence, causing it to diverge from  
248 expected health status on the basis of birth country.

249         Additionally, our study does not account for the number of non-US-born persons  
250 emigrating from a particular region nor how those numbers change over time. It also does not  
251 account for reason for immigration, such as refugee status, which may affect risk for TB  
252 infection. Likewise, it does not account for age at arrival or arrival year because adjusting for  
253 these variables with age at diagnosis would indirectly adjust for the outcome variable and cause  
254 the aHRs to converge to unity; adjusting for either of these variables would potentially account  
255 for time exposed to TB in a birth region, which may affect overall TB infection risk.

256         Furthermore, by using regions to categorize countries in this study, we lose the ability to  
257 detect differences among those countries. Also, although the plausible-source-case method  
258 employed by NTSS has high accuracy compared with field-based assessments of recent  
259 transmission that use epidemiologic investigation methods, it is not completely accurate and  
260 might misclassify certain cases (3). Finally, we were unable to assess the effect of HIV status and  
261 diabetes mellitus on time to TB disease diagnosis.

262 Conclusion

263 Time to TB disease diagnosis among non–US-born persons varies by birth region, which  
264 represents an important prognostic indicator for LTBI progressing to TB disease. Targeted LTBI  
265 testing and treatment for persons entering the United States who were born in regions with high  
266 aHRs might advance progress toward TB elimination in the United States. Additional studies  
267 using data sources that include information on risk factors like HIV infection and diabetes  
268 mellitus would be helpful in determining the potential influence of these comorbid conditions on  
269 time to LTBI reactivation; such studies would also benefit from accounting for age at arrival and  
270 TB rates in birth countries where feasible. Similar studies in countries with health care systems  
271 comparable to the United States and diverse immigrant populations would also help determine if  
272 these results are reproducible and could shed light on the etiology underlying regional  
273 differences in time to TB disease diagnosis.

#### 274 **Acknowledgments**

275 Andrew Hill; Carla A. Winston; Thomas R. Navin; Jonathan Wortham; Kristine M.  
276 Schmit; Sandy P. Althomsons; Noah Schwartz; Rebekah Stewart; Peter Cegielski; Andrew  
277 Vernon; National Center for HIV/AIDS, Viral Hepatitis, STD, and TB Prevention, CDC.

#### 278 **Author Bio**

279 Amish Talwar is an Epidemic Intelligence Service Officer in the Division of Tuberculosis  
280 Elimination at the Centers for Disease Control and Prevention in Atlanta. His primary research  
281 interests include infectious disease prevention and global health.

#### 282 **Disclosure of Funding Sources**

283 Neither the authors nor their institutions at any time received payment or services from a third  
284 party for any aspect of the submitted work.

## 285 **References**

286 1. Centers for Disease Control and Prevention (CDC)/Division of Tuberculosis Elimination.  
287 Reported tuberculosis in the United States, 2018 [Internet]. Atlanta, GA: US Department  
288 of Health and Human Services, CDC; 2019 [cited 2020 February 21].

289 <https://www.cdc.gov/tb/statistics/reports/2018/default.htm>

290 2. Centers for Disease Control and Prevention (CDC)/Division of Tuberculosis Elimination.  
291 Latent tuberculosis infection: a guide for primary health care providers [Internet].  
292 Atlanta, GA: US Department of Health and Human Services, CDC; 2013 [cited 2020  
293 February 21]. <https://www.cdc.gov/tb/publications/ltbi/pdf/targetedltbi.pdf>

294 3. France AM, Grant J, Kammerer JS, Navin TR. A field-validated approach using  
295 surveillance and genotyping data to estimate tuberculosis attributable to recent  
296 transmission in the United States. *Am J Epidemiol.* 2015;182:799–807.  
297 doi:10.1093/aje/kwv121

298 4. Yuen CM, Kammerer JS, Marks K, Navin TR, France AM. Recent transmission of  
299 tuberculosis—United States, 2011–2014. *PLoS One.* 2016;11:e0153728.  
300 doi:10.1371/journal.pone.0153728

301 5. Talwar A, Tsang CA, Price SF, Pratt RH, Walker WL, Schmit KM, et al. Tuberculosis—  
302 United States, 2018. *MMWR Morb Mortal Wkly Rep.* 2019;68:257–62.

- 303 6. Centers for Disease Control and Prevention (CDC)/Division of Tuberculosis Elimination.  
304 TB risk factors [Internet]. Atlanta, GA: US Department of Health and Human Services,  
305 CDC; 2016 [cited 2020 February 21]. <https://www.cdc.gov/tb/topic/basics/risk.htm>
- 306 7. Menzies NA, Hill AN, Cohen T, and Salomon JA. The impact of migration on  
307 tuberculosis in the United States. *Int J Tuberc Lung Dis*. 2018;22:1392–403.  
308 doi:10.5588/ijtld.17.0185
- 309 8. Argeseanu Cunningham S, Ruben JD, Narayan KM. Health of foreign-born people in the  
310 United States: a review. *Health Place*. 2008;14:623–35.  
311 doi:10.1016/j.healthplace.2007.12.002
- 312 9. Yelk Woodruff RS, Pratt RH, Armstrong LR. The US National Tuberculosis Surveillance  
313 System: a descriptive assessment of the completeness and consistency of data reported  
314 from 2008 to 2012. *JMIR Public Health Surveill*. 2015;1:e15.  
315 doi:10.2196/publichealth.4991
- 316 10. United Nations Statistics Division. Standard country or area codes for statistical use  
317 (M49) [Internet]. New York: United Nations; [cited 2020 March 2].  
318 <https://unstats.un.org/unsd/methodology/m49/>
- 319 11. Committee for the Coordination of Statistical Activities. Note on definition of regions for  
320 statistical analysis [Internet]. New York: United Nations Statistics Division; 2006 [cited  
321 2020 February 26]. [https://unstats.un.org/unsd/acsub/2006docs-8th/SA-2006-15-](https://unstats.un.org/unsd/acsub/2006docs-8th/SA-2006-15-Grouping-UNSD.pdf)  
322 [Grouping-UNSD.pdf](https://unstats.un.org/unsd/acsub/2006docs-8th/SA-2006-15-Grouping-UNSD.pdf)
- 323 12. Iqbal SA, Winston CA, Bardenheier BH, Armstrong LR, Navin TR. Age-period-cohort  
324 analyses of tuberculosis incidence rates by nativity, United States, 1996–2016. *Am J*  
325 *Public Health*. 2018;108(Suppl4):S315–20. doi:10.2105/AJPH.2018.304687

- 326 13. Rennert L, Xie SX. Cox regression model with doubly truncated data. *Biometrics*.  
327 2018;74:725–33. doi:10.1111/biom.12809
- 328 14. Walter ND, Painter J, Parker M, Lowenthal P, Flood J, Fu Y, et al; Tuberculosis  
329 Epidemiologic Studies Consortium. Persistent latent tuberculosis reactivation risk in  
330 United States immigrants. *Am J Respir Crit Care Med*. 2014;189:88–95. doi:  
331 10.1164/rccm.201308-1480OC
- 332 15. Menzies HJ, Winston CA, Holtz TH, Cain KP, Mac Kenzie WR. Epidemiology of  
333 tuberculosis among US- and foreign-born children and adolescents in the United States,  
334 1994–2007. *Am J Public Health*. 2010;100:1724–9. doi:10.2105/AJPH.2009.181289
- 335 16. Cain KP, Benoit SR, Winston CA, Mac Kenzie WR. Tuberculosis among foreign-born  
336 persons in the United States. *JAMA*. 2008;300:405–12. doi:10.1001/jama.300.4.405
- 337 17. Holmberg PJ, Temesgen Z, Banerjee R. Tuberculosis in children. *Pediatr Rev*.  
338 2019;40:168–78. Erratum in: *Pediatr Rev*. 2019;40:318. doi:10.1542/pir.2018-0093
- 339 18. World Health Organization. Global tuberculosis report 2019 [Internet]. Geneva: World  
340 Health Organization; 2019 [cited 2020 February 26].  
341 <https://apps.who.int/iris/bitstream/handle/10665/329368/9789241565714-eng.pdf?ua=1>
- 342 19. Houben RM, Dodd PJ. The global burden of latent tuberculosis infection: a re-estimation  
343 using mathematical modelling. *PLoS Med*. 2016;13(10):e1002152.  
344 doi:10.1371/journal.pmed.1002152
- 345 20. Abel L, Fellay J, Haas DW, Schurr E, Srikrishna G, Urbanowski M, et al. Genetics of  
346 human susceptibility to active and latent tuberculosis: present knowledge and future  
347 perspectives. *Lancet Infect Dis*. 2018;18:e64–75. doi:10.1016/S1473-3099(17)30623-0



- 348 21. United Nations Conference on Trade and Development. Least developed countries  
349 (LDCs) [Internet]. Geneva: United Nations Conference on Trade and Development;  
350 [cited 2020 February 26].  
351 <https://unctad.org/en/Pages/ALDC/Least%20Developed%20Countries/LDCs.aspx>
- 352 22. World Health Organization. World health statistics 2019: monitoring health for the SDGs  
353 [Internet]. Geneva: World Health Organization; 2019 [cited 2020 February 26].  
354 <https://apps.who.int/iris/bitstream/handle/10665/324835/9789241565707-eng.pdf?ua=1>
- 355 23. Cegielski JP, McMurray DN. The relationship between malnutrition and tuberculosis:  
356 evidence from studies in humans and experimental animals. *Int J Tuberc Lung Dis*.  
357 2004;8(3):286–298.
- 358 24. Centers for Disease Control and Prevention (CDC)/Division of Tuberculosis Elimination.  
359 Transmission and Pathogenesis of Tuberculosis [Chapter 2]. In: Core curriculum on  
360 tuberculosis: what the clinician should know. 6th ed. Atlanta: US Department of Health  
361 and Human Services, CDC; 2013: 19–44.
- 362 25. World Health Organization. Tuberculosis & diabetes [Internet]. Geneva: World Health  
363 Organization; 2019 [cited 2020 February 26].  
364 [https://www.who.int/tb/publications/diabetes\\_tb.pdf](https://www.who.int/tb/publications/diabetes_tb.pdf)
- 365 26. Blanas DA, Nichols K, Bekele M, Lugg A, Kerani RP, Horowitz CR. HIV/AIDS among  
366 African-born residents in the United States. *J Immigr Minor Health*. 2013;15:718–24.  
367 doi:10.1007/s10903-012-9691-6
- 368 27. GBD 2015 HIV Collaborators. Estimates of global, regional, and national incidence,  
369 prevalence, and mortality of HIV, 1980-2015: the Global Burden of Disease Study 2015.  
370 *Lancet HIV*. 2016;3(8):e361–e387. doi:10.1016/S2352-3018(16)30087-X

- 371 28. Centers for Disease Control and Prevention (CDC). Final rule removing HIV infection  
372 from U.S. immigration screening [Internet]. Atlanta, GA: US Department of Health and  
373 Human Services, CDC; 2011 [cited 2020 April 20].  
374 [https://www.cdc.gov/immigrantrefugeehealth/laws-regs/hiv-ban-removal/final-rule-](https://www.cdc.gov/immigrantrefugeehealth/laws-regs/hiv-ban-removal/final-rule-technical-qa.html)  
375 [technical-qa.html](https://www.cdc.gov/immigrantrefugeehealth/laws-regs/hiv-ban-removal/final-rule-technical-qa.html)
- 376 29. Shariff SZ, Cuerden MS, Jain AK, Garg AX. The secret of immortal time bias in  
377 epidemiologic studies. *J Am Soc Nephrol.* 2008;19:841–3.  
378 doi:10.1681/ASN.2007121354
- 379 30. Department of Homeland Security (US). Refugee arrivals by region and country of  
380 nationality: fiscal years 2009 to 2018 [Internet]. Washington: US Department of  
381 Homeland Security; [updated 2020 January 9, cited 2020 February 26].  
382 [https://www.dhs.gov/sites/default/files/publications/immigration-](https://www.dhs.gov/sites/default/files/publications/immigration-statistics/yearbook/2018/yrbk_2018_rfa_excel_final.zip)  
383 [statistics/yearbook/2018/yrbk\\_2018\\_rfa\\_excel\\_final.zip](https://www.dhs.gov/sites/default/files/publications/immigration-statistics/yearbook/2018/yrbk_2018_rfa_excel_final.zip)
- 384 31. Centers for Disease Control and Prevention (CDC)/Division of Tuberculosis Elimination.  
385 Guidelines for screening for tuberculosis infection and disease during the domestic  
386 medical examination for newly arrived refugees [Internet]. Atlanta: US Department of  
387 Health and Human Services, CDC; 2019 [cited 2020 February 26].  
388 [https://www.cdc.gov/immigrantrefugeehealth/guidelines/domestic/tuberculosis-](https://www.cdc.gov/immigrantrefugeehealth/guidelines/domestic/tuberculosis-guidelines.html)  
389 [guidelines.html](https://www.cdc.gov/immigrantrefugeehealth/guidelines/domestic/tuberculosis-guidelines.html)
- 390 32. Mitchell T, Weinberg M, Posey DL, Cetron M. Immigrant and refugee health: a Centers  
391 for Disease Control and Prevention perspective on protecting the health and health  
392 security of individuals and communities during planned migrations. *Pediatr Clin North*  
393 *Am.* 2019;66:549–60. doi:10.1016/j.pcl.2019.02.004

394 33. Tsang CA, Langer AJ, Kammerer JS, Navin TR. US Tuberculosis Rates among Persons  
395 Born Outside the United States Compared with Rates in Their Countries of Birth, 2012-  
396 2016<sup>1</sup>. *Emerg Infect Dis.* 2020;26(3):533–540. doi:10.3201/eid2603.190974

397 34. Taylor AB, Kurbatova EV, Cegielski JP. Prevalence of anti-tuberculosis drug resistance  
398 in foreign-born tuberculosis cases in the U.S. and in their countries of origin. *PLoS One.*  
399 2012;7(11):e49355. doi:10.1371/journal.pone.0049355

400

401 Address for correspondence: Amish Talwar, Centers for Disease Control and Prevention,  
402 1600 Clifton Rd NE, Mailstop US12-4, Atlanta, GA, 30329, USA; phone number: +1-404-  
403 718-7207; e-mail: [atalwar@cdc.gov](mailto:atalwar@cdc.gov)

404

405 **Table 1.** Median time to diagnosis of tuberculosis disease not attributed to recent transmission  
406 for non-US-born persons by region — United States, 2011–2018  
407

<b>Region</b>	<b>Median time to tuberculosis disease diagnosis (months)</b>
<i>Africa</i>	53
Eastern Africa	62
Middle Africa	26
Northern Africa	64
Southern Africa	77
Western Africa	46
<i>Americas</i>	162
Caribbean	127
Central America	175
Northern America*	353
South America	142
<i>Asia</i>	157
Central Asia	60
Eastern Asia	211
South-eastern Asia	190
Southern Asia	76
Western Asia	83
<i>Europe</i>	214
Eastern Europe	178
Northern Europe	455
Southern Europe	223
Western Europe	541
<i>Oceania</i>	67

408 \* Excludes the United States of America.  
409

410 **Table 2.** Adjusted hazard ratio (aHR) estimates of tuberculosis disease diagnosis for non-U.S-  
 411 born persons with tuberculosis disease not attributed to recent transmission, adjusting for age at  
 412 diagnosis, sex, and birth year (n = 28,450) — United States, 2011–2018  
 413

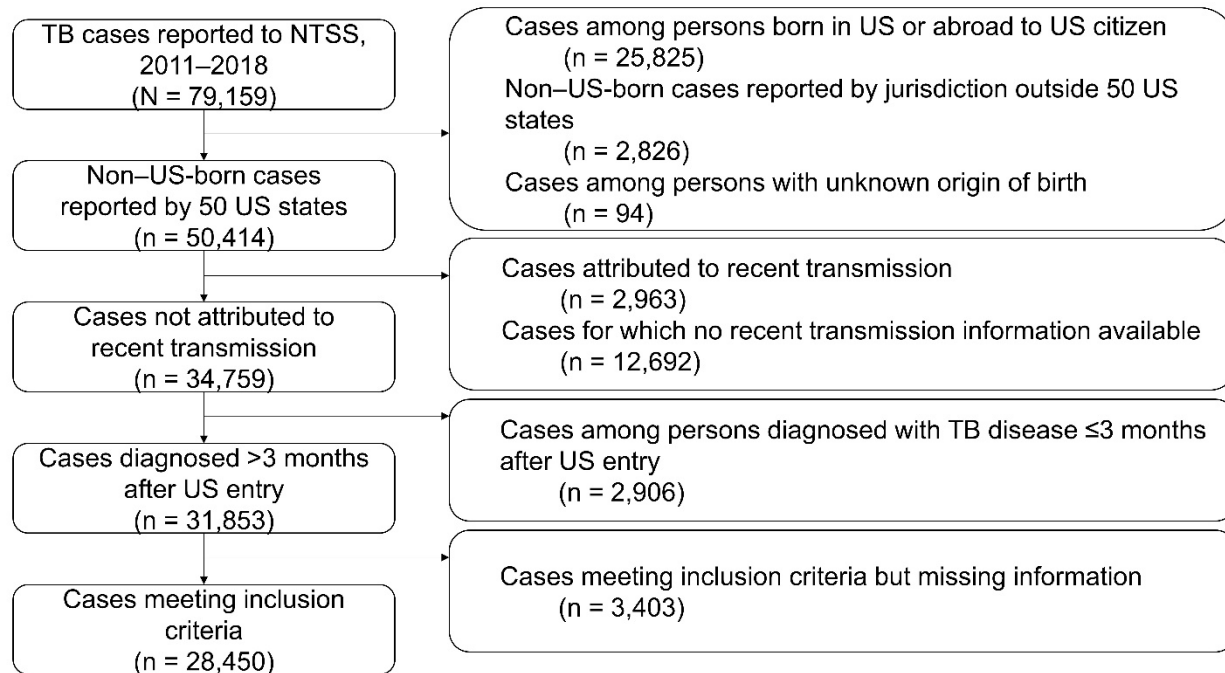
Region	No. (%)	aHR	95% CI	p value
<i>Africa</i>	2,910 (10.2)			
Eastern Africa	1,627 (5.7)	3.91	(3.67–4.17)	<0.01
Middle Africa	286 (1.0)	7.02	(6.53–7.56)	<0.01
Northern Africa	126 (0.4)	3.43	(3.15–3.75)	<0.01
Southern Africa	56 (0.2)	4.19	(3.74–4.70)	<0.01
Western Africa	815 (2.9)	4.84	(4.54–5.17)	<0.01
<i>Americas</i>	9,719 (34.2)			
Caribbean	1,241 (4.4)	2.82	(2.65–3.01)	<0.01
Central America	7,114 (25.0)	2.03	(1.91–2.15)	<0.01
Northern America*	20 (0.1)	1.13	(0.99–1.29)	0.07
South America	1,344 (4.7)	2.85	(2.68–3.03)	<0.01
<i>Asia</i>	14,999 (52.7)			
Central Asia	45 (0.2)	4.71	(4.17–5.32)	<0.01
Eastern Asia	2,924 (10.3)	2.88	(2.71–3.07)	<0.01
South-eastern Asia	7,812 (27.5)	3.06	(2.89–3.26)	<0.01
Southern Asia	4,026 (14.2)	4.29	(4.04–4.57)	<0.01
Western Asia	192 (0.7)	3.34	(3.09–3.62)	<0.01
<i>Europe</i>	669 (2.4)			
Eastern Europe	328 (1.2)	2.77	(2.58–2.98)	<0.01
Northern Europe	47 (0.2)	1.12	(1.01–1.23)	0.03
Southern Europe	226 (0.8)	1.25	(1.17–1.35)	<0.01
Western Europe†	68 (0.2)	NA	NA	NA
<i>Oceania</i>	153 (0.5)	2.78	(2.56–3.02)	<0.01
Australia and New Zealand	1 (0.004)	NA	NA	NA
Melanesia	10 (0.04)	NA	NA	NA
Micronesia	113 (0.4)	NA	NA	NA
Polynesia	29 (0.1)	NA	NA	NA

414 Abbreviations: CI: confidence interval; NA: not available.

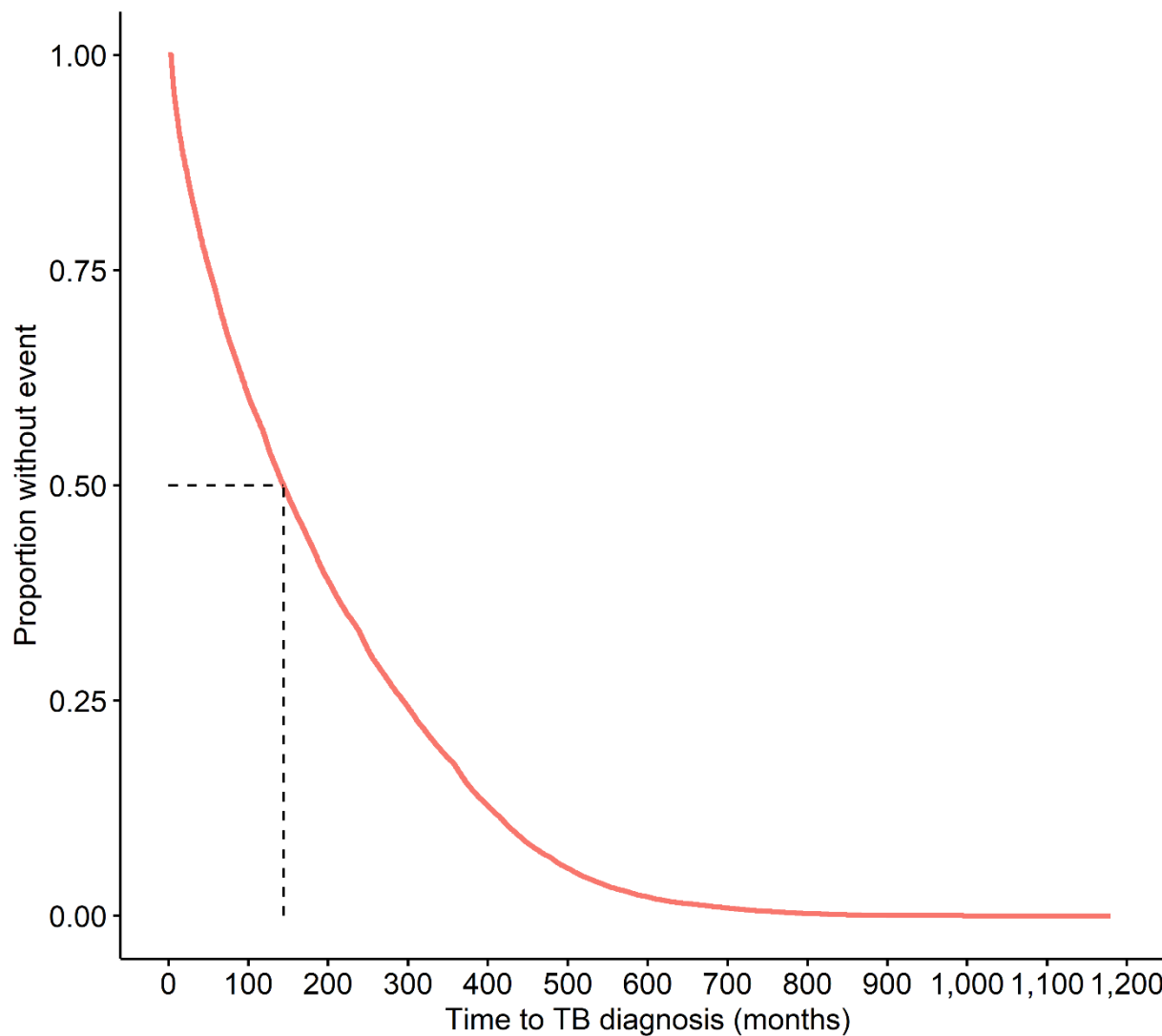
415 \* Excludes the United States of America.

416 † Indicates reference value.

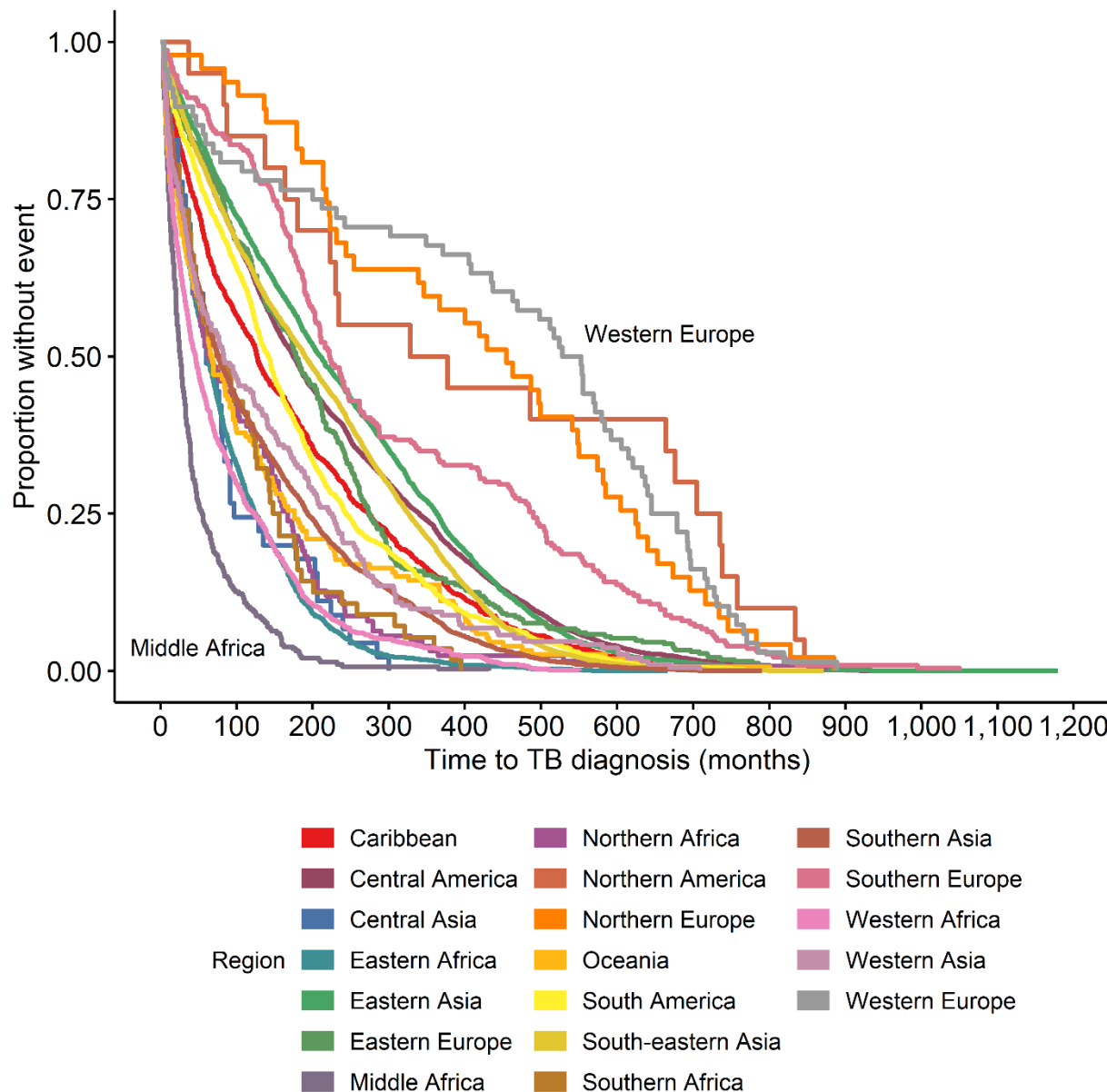
417



418  
419 **Figure 1.** Flow chart of analysis cohort selection process.  
420



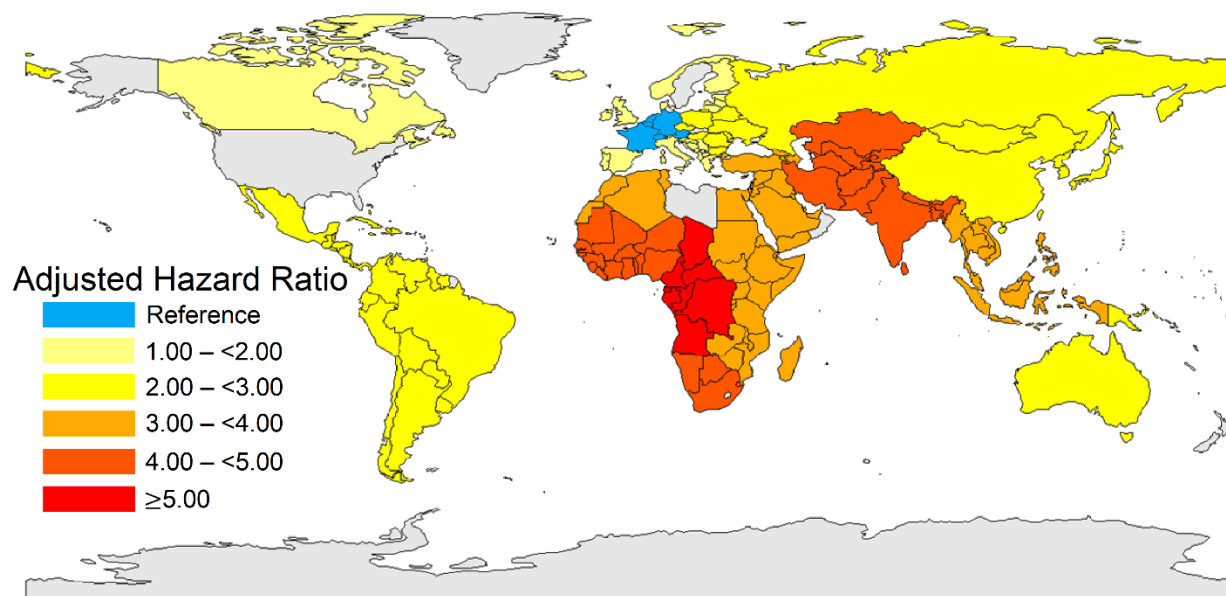
421  
422 **Figure 2.** Kaplan-Meier estimates for time to tuberculosis (TB) disease diagnosis not attributed  
423 to recent transmission for non-US-born persons — United States, 2011–2018.  
424



425  
 426 **Figure 3.** Kaplan-Meier estimates for time to tuberculosis (TB) disease diagnosis not attributed  
 427 to recent transmission for non-U.S.-born persons stratified by region of birth (see Appendix A  
 428 for list of countries) — United States, 2011–2018.  
 429



430



431

432

433

434

**Figure 4.** Map of adjusted hazard ratios for time to tuberculosis (TB) disease diagnosis not attributed to recent transmission for non-US-born persons according to region of birth (see Appendix A for list of countries) — United States, 2011–2018.